

## List of pages in this Trip Kit

Trip Kit Index

Airport Information For ZSAM

Terminal Charts For ZSAM

Revision Letter For Cycle 07-2023

Change Notices

Notebook

## General Information

Location: XIAMEN CHN  
ICAO/IATA: ZSAM / XMN  
Lat/Long: N24° 32.70', E118° 07.60'  
Elevation: 59 ft

Airport Use: Public  
Daylight Savings: Not Observed  
UTC Conversion: -8:00 = UTC  
Magnetic Variation: 2.0° W

Fuel Types: Jet  
Repair Types: Minor Airframe, Major Engine  
Customs: Yes  
Airport Type: IFR  
Landing Fee: Yes  
Control Tower: Yes  
Jet Start Unit: No  
LLWS Alert: No  
Beacon: No

Sunrise: 2146 Z  
Sunset: 1030 Z

## Runway Information

Runway: 05  
Length x Width: 11155 ft x 148 ft  
Surface Type: asphalt  
TDZ-Elev: 59 ft  
Lighting: Edge, ALS, Centerline  
Displaced Threshold: 492 ft

Runway: 23  
Length x Width: 11155 ft x 148 ft  
Surface Type: asphalt  
TDZ-Elev: 43 ft  
Lighting: Edge, ALS, Centerline  
Displaced Threshold: 656 ft

## Communication Information

ATIS: 131.450  
ATIS: 126.250

Xiamen Tower: 118.250  
Xiamen Tower: 130.000 Secondary  
Xiamen Ground: 121.700  
Xiamen Ramp/Taxi: 121.600  
Xiamen Ramp/Taxi: 121.800  
Xiamen Clearance Delivery: 121.950  
Xiamen Approach: 119.850 Secondary  
Xiamen Approach: 121.350  
Xiamen Approach: 120.200  
Xiamen Approach: 125.025  
Xiamen Approach: 123.825  
Xiamen Approach: 119.050 Secondary

ZSAM/XMN

+ JEPPESEN

XIAMEN, PR OF CHINA

GAOQI

29 JUL 22

10-1P

.Eff.10.Aug.1600Z.

.AIRPORT.BRIEFING.

---

## 1. GENERAL

---

### 1.1. ATIS

D-ATIS 126.25

### 1.2. RWY OPERATIONS

During changing the direction of RWY in use, if downwind speed is more than 3m/s (6 KT) and not exceeding 5m/s (10 KT), ATC may instruct ACFT downwind take-off or downwind landing for short time. Pilot shall inform controller if he decides not to take off or land on downwind RWY allocated according to ACFT performance or operation handbook.

### 1.3. TAXI PROCEDURES

Turns with more than 90° on RWYs and asphalt TWYs are prohibited.

TWYs T3, T5, T6 and T14 (North of stand 203) restricted to MAX wingspan of 213' /65m.

TWY T4 restricted to MAX wingspan of 200' /61m.

TWY T14 (South of stand 203) restricted to MAX wingspan of 157' /48m.

TWYs T2 and T7 restricted to MAX wingspan of 125' /38m.

TWYs T8 thru T10, T12, T13 and T15 thru T18 restricted to MAX wingspan of 118' /36m.

TWYs T5 and T6 are available for B747-8 after obtaining APN clearance.

Do not taxi on TWYs T7, T8, T9 or T10 when ACFT parking on apron 3, 4, 5 resp. 7.

When ACFT parking on stand 86, ACFT parking on stands 101 thru 103 shall push-back from T5 to taxi.

MAX ACFT taxi via TWY B to TWY T10 is CAT C.

ACFT shall set transponder on ground mode while taxiing.

### 1.4. PARKING INFORMATION

Stands 65 and 67 available for fuselage cleaning.

Stands 1 thru 3L, 5 thru 24, 62 thru 69, 81 thru 86, 101 thru 109, 201 thru 215, 227 thru 232, push-back required.

ACFT taxi into/out of special parking areas 1L, 2L and 3L by Follow-me vehicle.

ACFT taxi into special parking area 5L by Follow-me vehicle.

Visual Docking Guidance System available for stands 1 thru 3, 5 thru 12, 15 thru 17, 82 thru 84, 201 thru 203, 205 thru 212, 215.

### 1.5. OTHER INFORMATION

Birds.

When landing on RWY 05, do not mistake lights at the sides of APT road for PAPI.

RWY 23 right-hand circuit.

Without permission, deviating to the coast is prohibited.

ZSAM/XMN

+ JEPPESEN

XIAMEN, PR OF CHINA

GAOQI

29 JUL 22

10-1P1

.Eff.10.Aug.1600Z.

.AIRPORT.BRIEFING.

---

## 2. ARRIVAL

---

### 2.1. COMMUNICATION FAILURE PROCEDURES

Proceed to XLN, according to the last assigned altitude (climb to 2960'-900m if not reached), if the altitude over XLN is more than 4930'-1500m join the holding procedure, descend to the initial approach altitude (4930'-1500m) and land according to RWY 05/RWY 23 instrument approach procedure.

If altitude at XLN is less than 4930'-1500m, approach and land according to RWY 05/RWY 23 instrument approach procedure directly.

### 2.2. RWY OPERATIONS

Landing ACFT shall fully vacate the RWY within 50 seconds after touchdown (except for wet or contaminated RWY). If unable, inform APP before establishing final approach course.

### 2.3. OTHER INFORMATION

Pilot shall keep ACFT on flight track strictly when landing on RWY 05. It is forbidden to deviate to Southeast.

---

## 3. DEPARTURE

---

### 3.1. CLEARANCE DELIVERY/DATALINK DEPARTURE CLEARANCE SERVICE (DCL)

#### 3.1.1. CLEARANCE DELIVERY

Departing ACFT shall contact Delivery for delivery clearance within 10 minutes prior to the cabin door closed.

Flight crew shall stand by Delivery Control frequency after getting delivery clearance. Contact GND before approaching TWY A and TWR before approaching RWY holding positions.

#### 3.1.2. DEPARTURE CLEARANCE VIA DATA LINK (DCL)

Within 10 to 30 minutes prior to Estimated Off-Block Time (EOBT) pilot preferably shall use Departure Clearance (DCL) via data link to receive ATC delivery clearance. Upon completion of DCL service, pilot shall repeat RWY in use, initial climb course and initial climb altitude to ATC.

During DCL message 'NEXT FREQ' means TWR frequency and 'DEP FREQ' means APP frequency.

If DCL is not available, pilot shall contact ATC for verbal ATC clearance.

### 3.2. START-UP AND PUSH-BACK PROCEDURES

Engine run-ups shall be permitted by APN and carried out at designated location. Fast engine run-ups near boarding bridges are strictly prohibited.

Push-back of ACFT on own power is strictly forbidden without APN clearance.

### 3.3. NOISE ABATEMENT PROCEDURES

Upon condition of complying with the requirements of obstacle clearance and climb gradient required by flight procedure, the following noise abatement climb procedures shall be implemented:

- At 450m (1500') - Adjust and keep engine climbing power and thrust;
  - Maintain climbing speed at  $V_2 + 30\text{km/h}$  (15 KT) with flaps/slats in take-off configuration.
- At 910m (3000') - Maintain a positive rate of climb, accelerate to normal en-route climb speed and retract flaps and slats.

ZSAM/XMN

+ JEPPESEN

XIAMEN, PR OF CHINA

GAOQI

29 JUL 22

10-1P2

.Eff.10.Aug.1600Z.

.AIRPORT.BRIEFING.

---

### 3. DEPARTURE

---

The derated take-off is strongly recommended, if take-off performance of ACFT permits.

If the procedure cannot be implemented due to any reason other than ATC, controller shall be informed by the pilot.

LEFT turn departure via RWY 05 should not operate according to noise abatement procedure.

#### 3.4. RWY OPERATIONS

Departing ACFT shall finish RWY alignment within 60 seconds after receiving ATC clearance for entering RWY (except for wet or contaminated RWY). If unable, inform TWR before reaching RWY holding position.

#### 3.5. OTHER INFORMATION

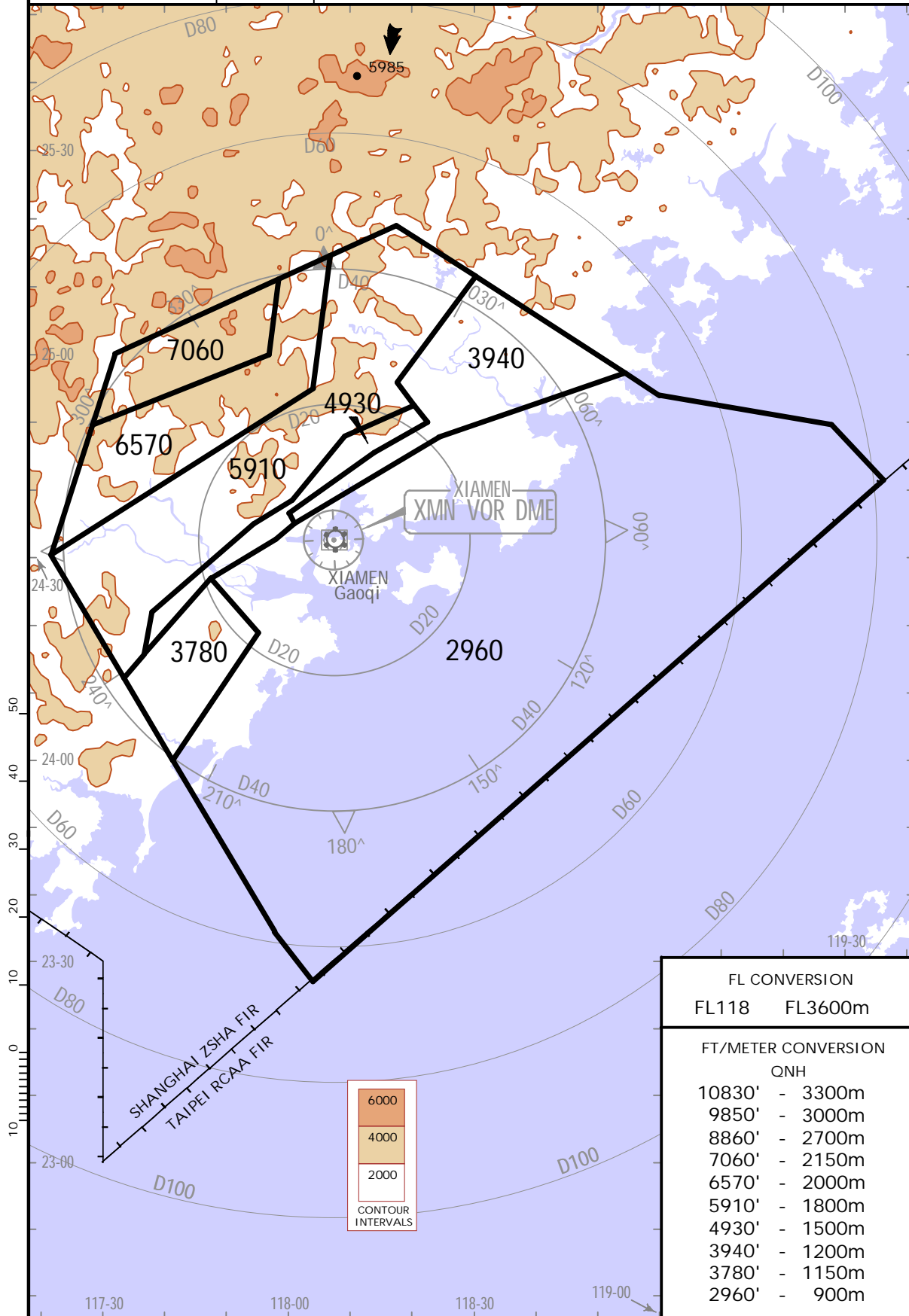
Flight crew shall release TWR frequency without RTF instruction from controller as soon as airborne and contact the next frequency assigned by TWR.

ZSAM/XMN  
GAOQI

31 JUL 20  
.Eff. 12.Aug.1600Z. (10-1R)

XIAMEN, PR OF CHINA  
.RADAR.MINIMUM.ALTITUDES..

XIAMEN Approach (R) APP01    APP02 121.35   120.2	Apt Elev 59	Alt Set: hPa Tran level: FL118 Trans alt: 9850 10830 1031 hPa or above 8860 979 hPa or below Chart only to be used for cross-checking of altitudes assigned while under RADAR control.
---	----------------	---



FL CONVERSION	
FL118	FL3600m
FT/METER CONVERSION	
QNH	
10830'	- 3300m
9850'	- 3000m
8860'	- 2700m
7060'	- 2150m
6570'	- 2000m
5910'	- 1800m
4930'	- 1500m
3940'	- 1200m
3780'	- 1150m
2960'	- 900m

ZSAM/XMN  
GAOQI

JEPPESSEN

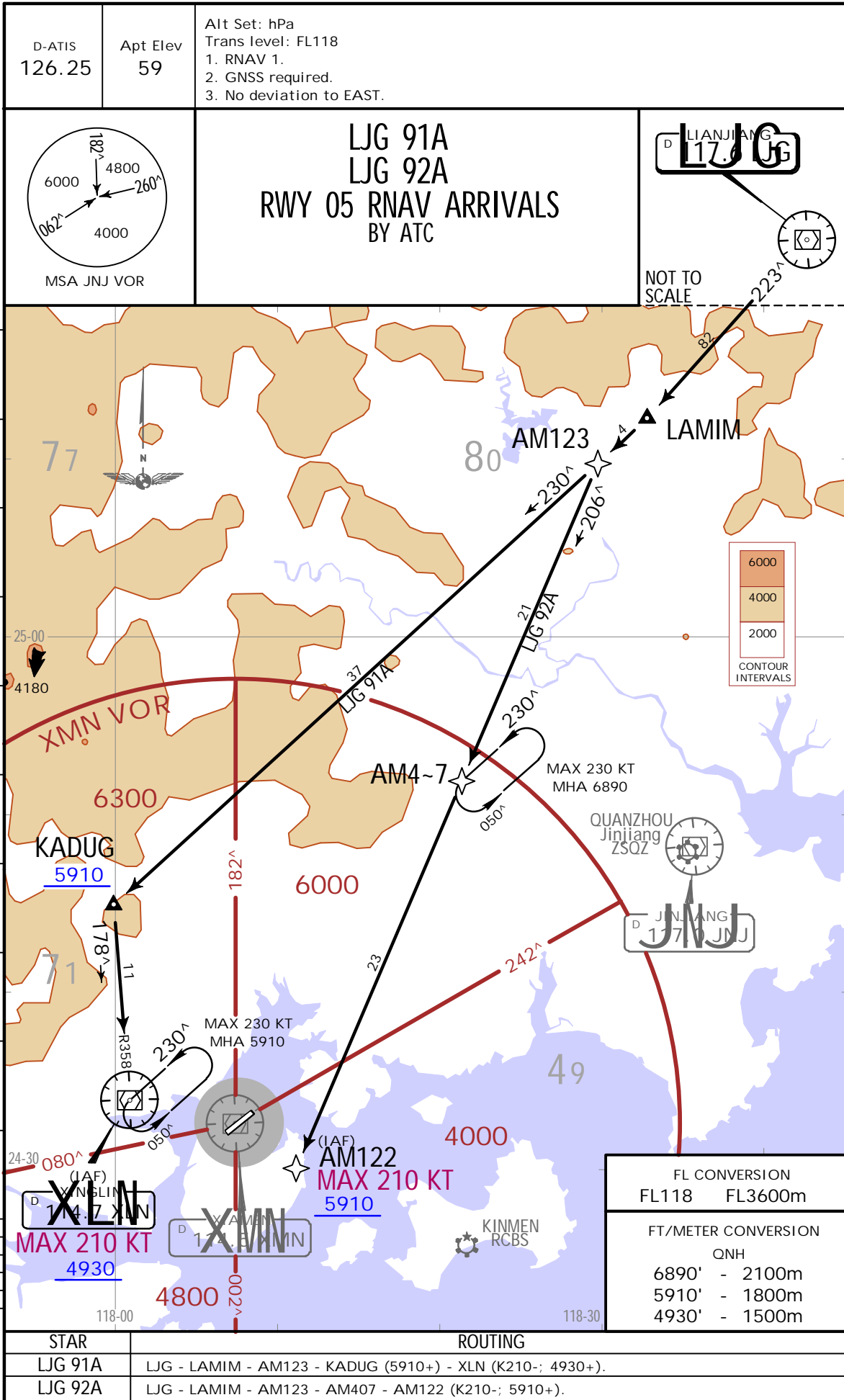
XIAMEN, PR OF CHINA

27 DEC 19

10-2

.Eff. 1 Jan. 1600Z.

.RNAV.STAR.





ZSAM/XMN  
GAOQI



XIAMEN, PR OF CHINA

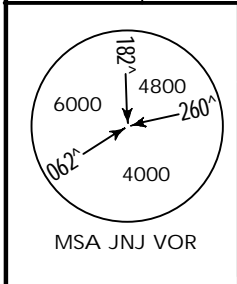
27 DEC 19

10-2A

.Eff.1.Jan.1600Z.

.RNAV.STAR.

D-ATIS 126.25	Apt Elev 59	Alt Set: hPa 1. RNAV 1. 2. GNSS required. 3. No deviation to EAST.	Trans level: FL118
------------------	----------------	---	--------------------



FL CONVERSION	
FL118	FL3600m
FT/METER CONVERSION	
QNH	
6890'	- 2100m
5910'	- 1800m
4930'	- 1500m
3940'	- 1200m

FOG 81A  
FOG 82A  
RWY 23 RNAV ARRIVALS



STAR	ROUTING
FOG 81A	FOG - ATSAB - AM407 (4930+) - AM211 (K210-; 4930+).
FOG 82A By ATC	FOG - ATSAB - AM222 (6890+) - AM221 (K210-; 3940+).

# XIAMEN, PR OF CHINA .RNAV.STAR

ZSAM/XMN  
GAOO1  
27 DEC 19 (10-2B) Eff. 1 Jan. 1600Z.  
JEPPESEN

D-ATIS 126.25

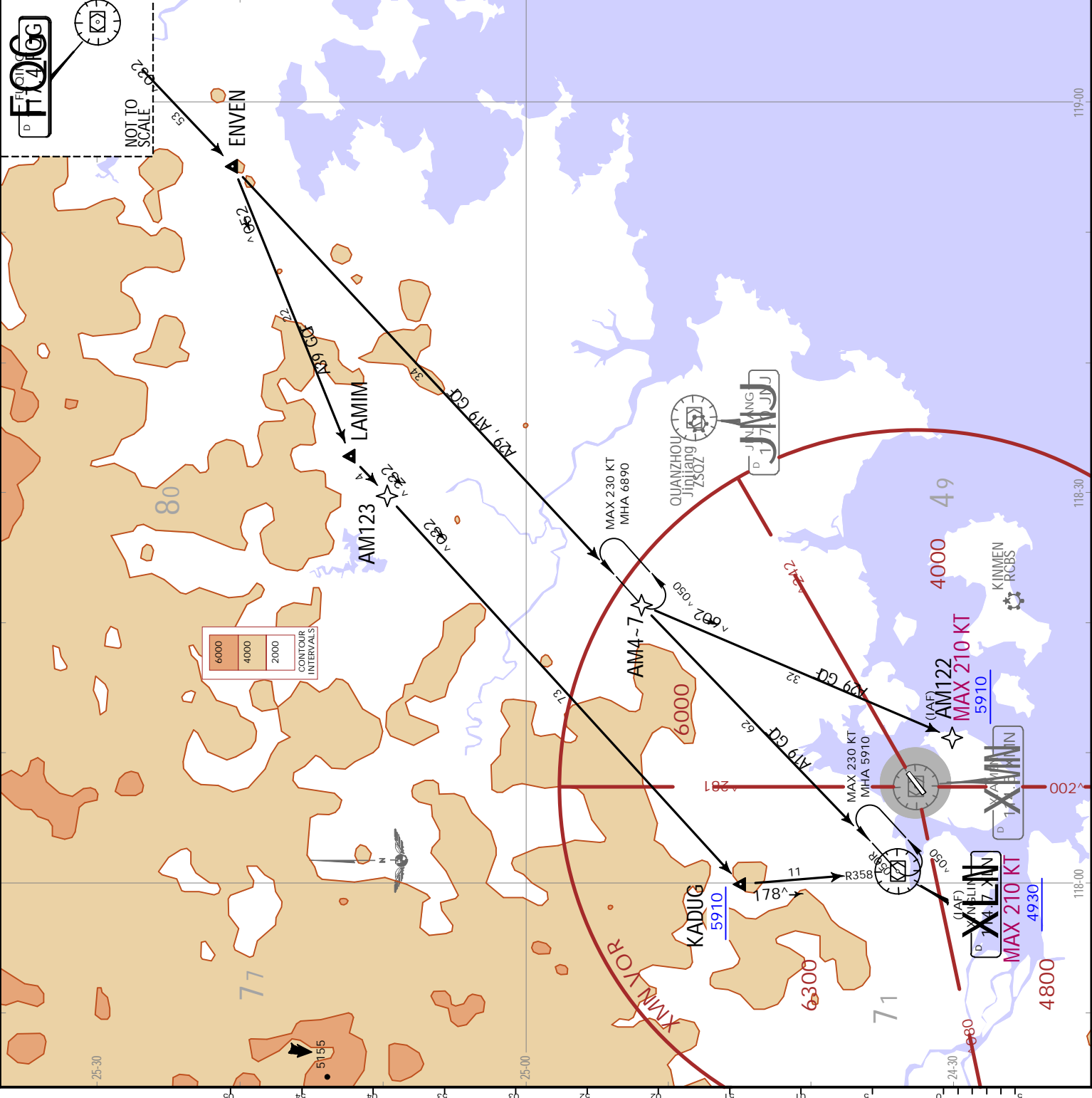
Apt Elev 59

Alt Set: hPa  
Trans level: FL118  
1. RNAV 1.  
2. GNSS required.  
3. No deviation to EAST.

**FOG 91A, FOG 92A  
FOG 93A  
RWY 05 RNAV ARRIVALS**

FL CONVERSION  
FL118 FL3600m  
FT/METER CONVERSION  
QNH  
6890' - 2100m  
5910' - 1800m  
4930' - 1500m

MSA JNJ VOR



STAR	ROUTING
FOG 91A	FOG - ENVEN - AM407 - XLN (K210-; 4930+).
FOG 92A By ATC	FOG - ENVEN - AM407 - AM122 (K210-; 5910+).
FOG 93A By ATC	FOG - ENVEN - LAMIM - AM123 - KADUG (5910+ - XLN (K210-; 4930+).

ZSAM/XMN  
GAOQI

**JEPPESEN**

XIAMEN, PR OF CHINA

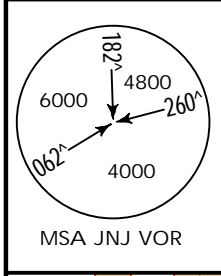
27 DEC 19

10-2C

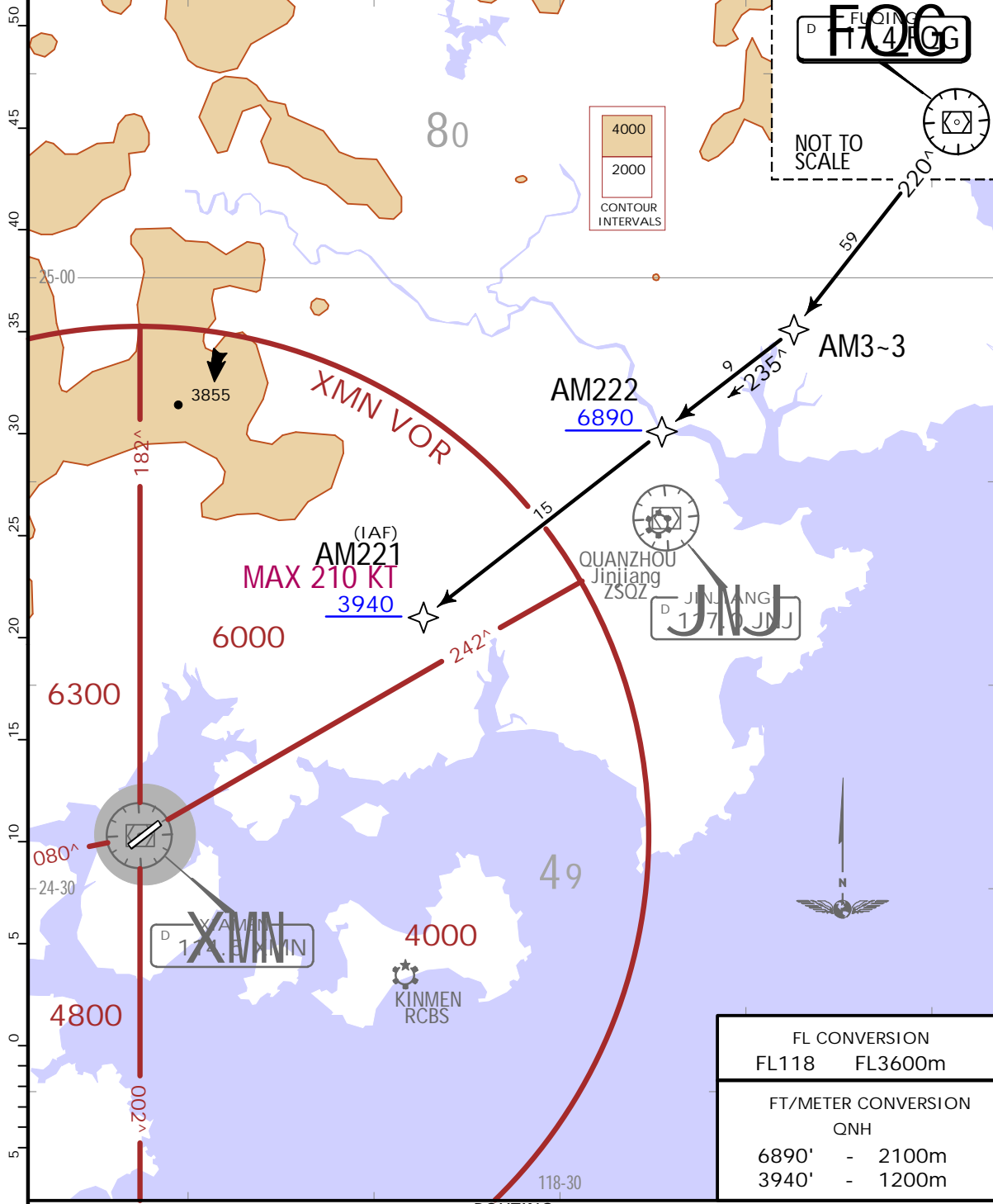
.Eff. 1. Jan. 1600Z.

.RNAV.STAR.

D-ATIS 126.25	Apt Elev 59	Alt Set: hPa Trans level: FL118 1. RNAV 1. 2. GNSS required. 3. No deviation to EAST.
------------------	----------------	---



**FGQ 83A**  
**RWY 23 RNAV ARRIVAL**  
BY ATC



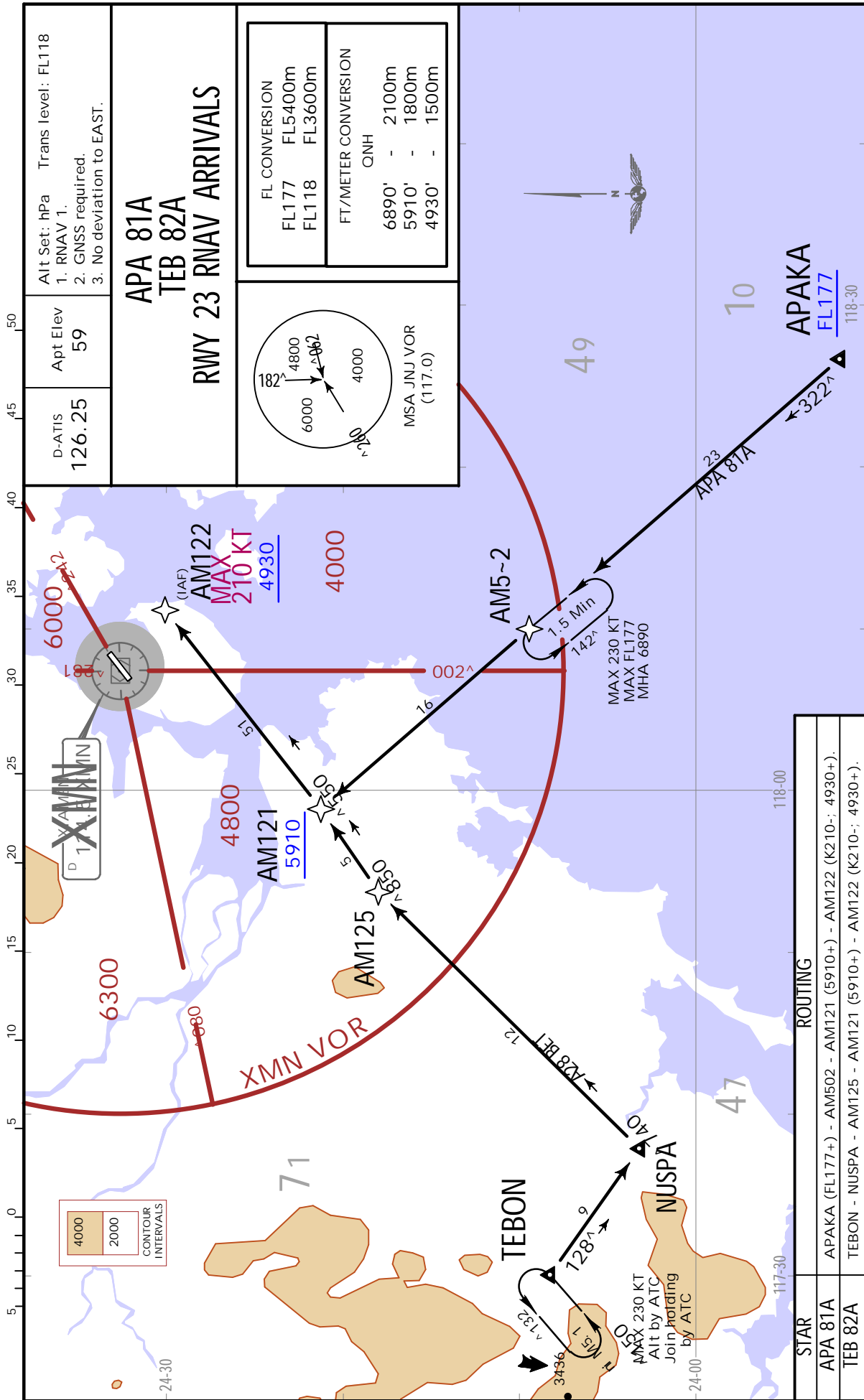
ROUTING  
FGQ - AM303 - AM222 (6890+) - AM221 (K210-; 3940+).



ZSAM/XMN  
GAOQI

27 DEC 19 10-2E .Eff.1.Jan.1600Z.

JIAPESSEN XIAMEN, PR OF CHINA  
.RNAV.STAR.



CHANGES: RNAV STARS redesigned & revised; new format.

JEPPESSEN, 2019. ALL RIGHTS RESERVED.

ZSAM/XMN  
GAOQI



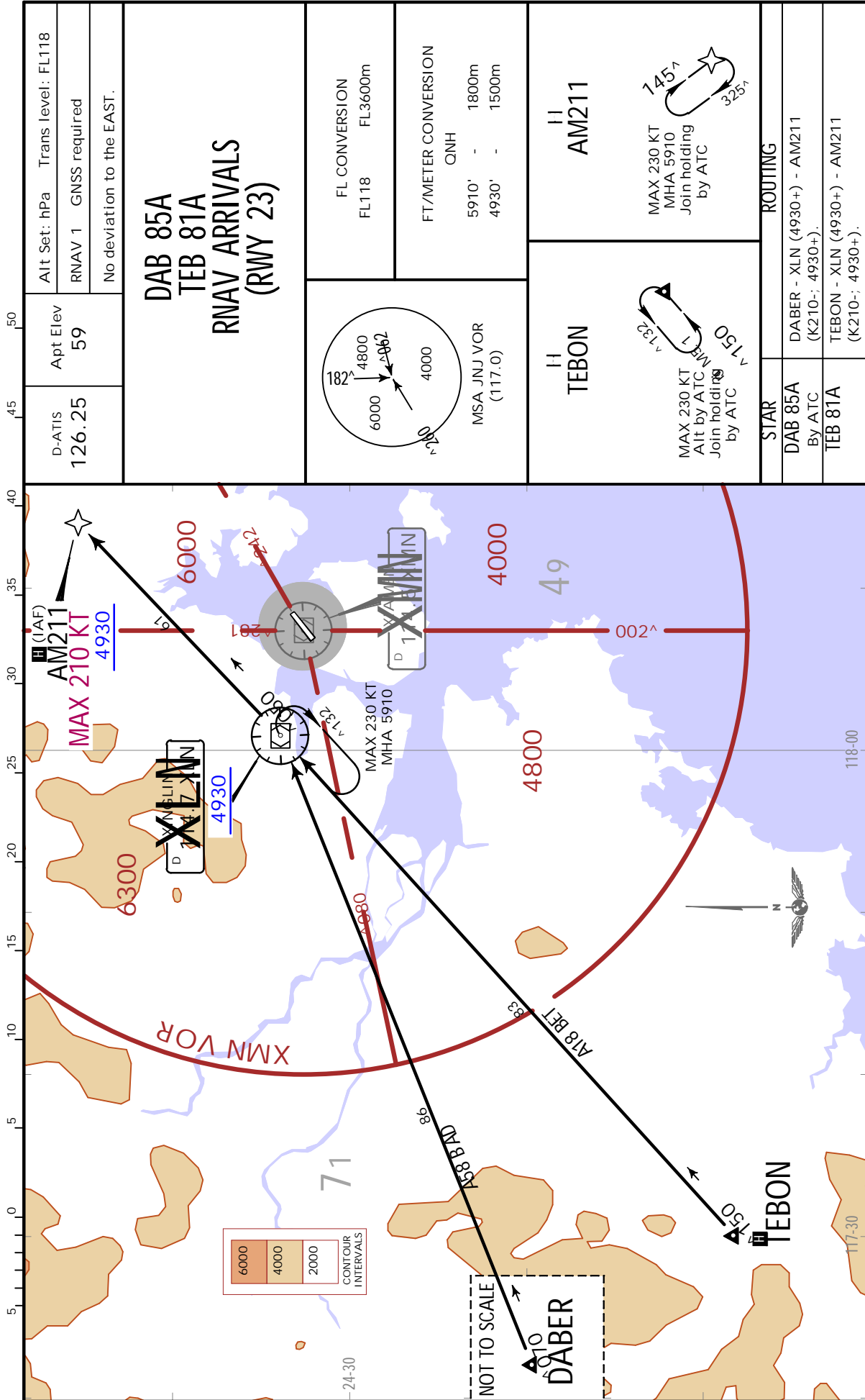
XIAMEN, PR OF CHINA

24 DEC 21

10-2F

Eff. 29. Dec. 1600Z.

.RNAV. STAR.



ZSAM/XMN  
GAOQI

JEPPESSEN 24 DEC 21 (10-2G) .Eff.29.Dec.1600Z.

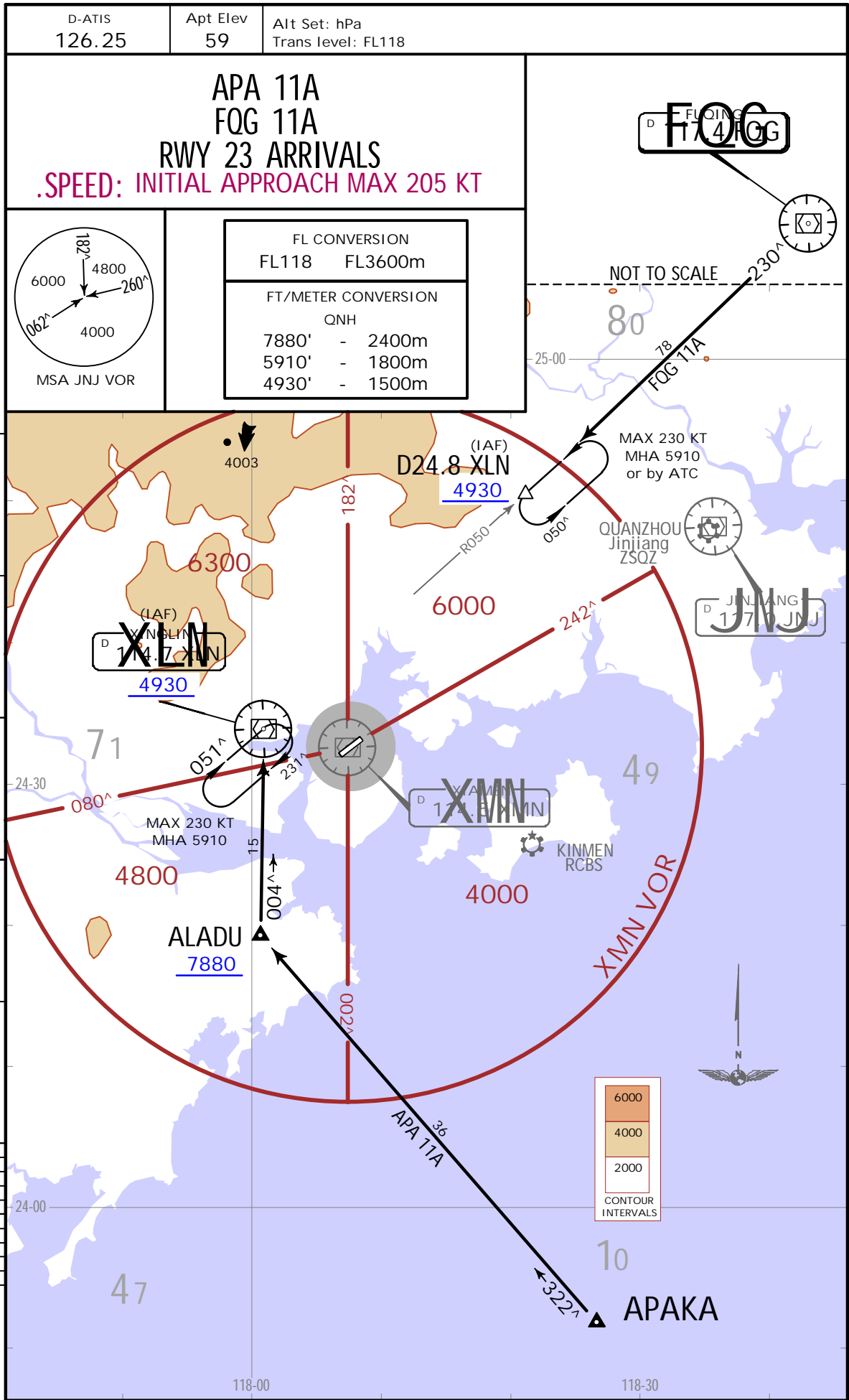
XIAMEN, PR OF CHINA  
.STAR.



ZSAM/XMN  
GAOQI

JEPPESEN  
27 DEC 19 (10-2H) .Eff.1.Jan.1600Z.

XIAMEN, PR OF CHINA  
.STAR.



CHANGES: STARs redesignated; new format.



ZSAM/XMN  
GAOQI

JEPPESSEN

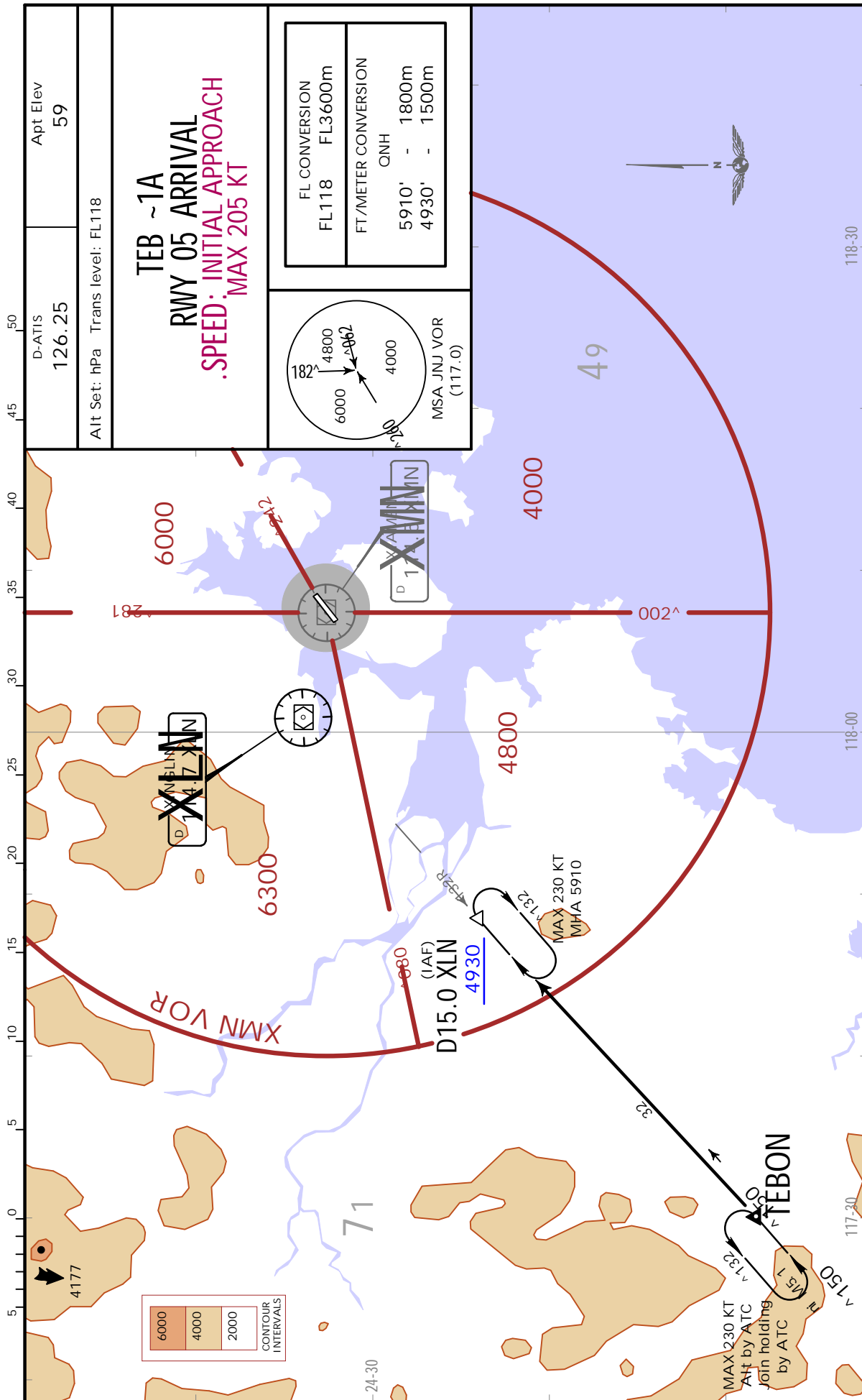
XIAMEN, PR OF CHINA

27 DEC 19

10-2J

.Eff.1.Jan.1600Z.

.STAR.







**JEPPESEN**  
 24 JAN 20 10-3A .Eff. 29 Jan. 1600Z.  
**ZSAM/XMN**  
 GAOOI

**XIAMEN, PR OF CHINA**  
 .RNAV.SID.

Apt Elev  
 59

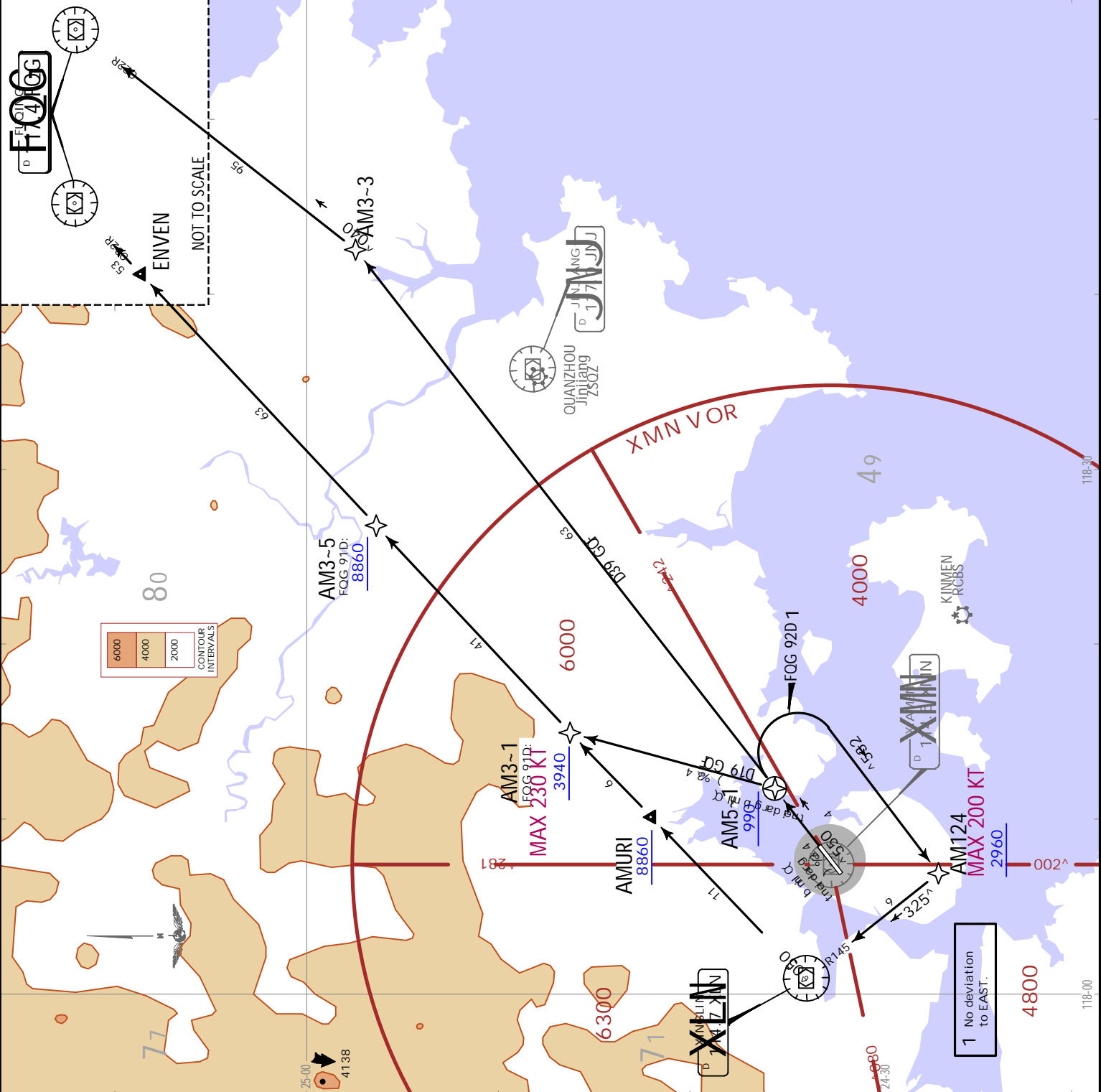
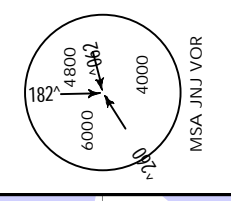
Trans alt: 9850  
 10830 - 103.1 hPa or above  
 8860 - 979 hPa or below

1. RNAV 1.  
 2. GNSS required.

**FOG 91D, FOG 92D**  
**FOG 93D**  
**RWY 05 RNAV DEPARTURES**

FT./METER CONVERSION  
 QNH

990'	-	300m
2960'	-	900m
3940'	-	1200m
8860'	-	2700m
9850'	-	3000m
10830'	-	3300m



Grnd speed-KT	75	100	150	200	250	300
4.3% V/V (fpm)	327	435	653	871	1089	1306

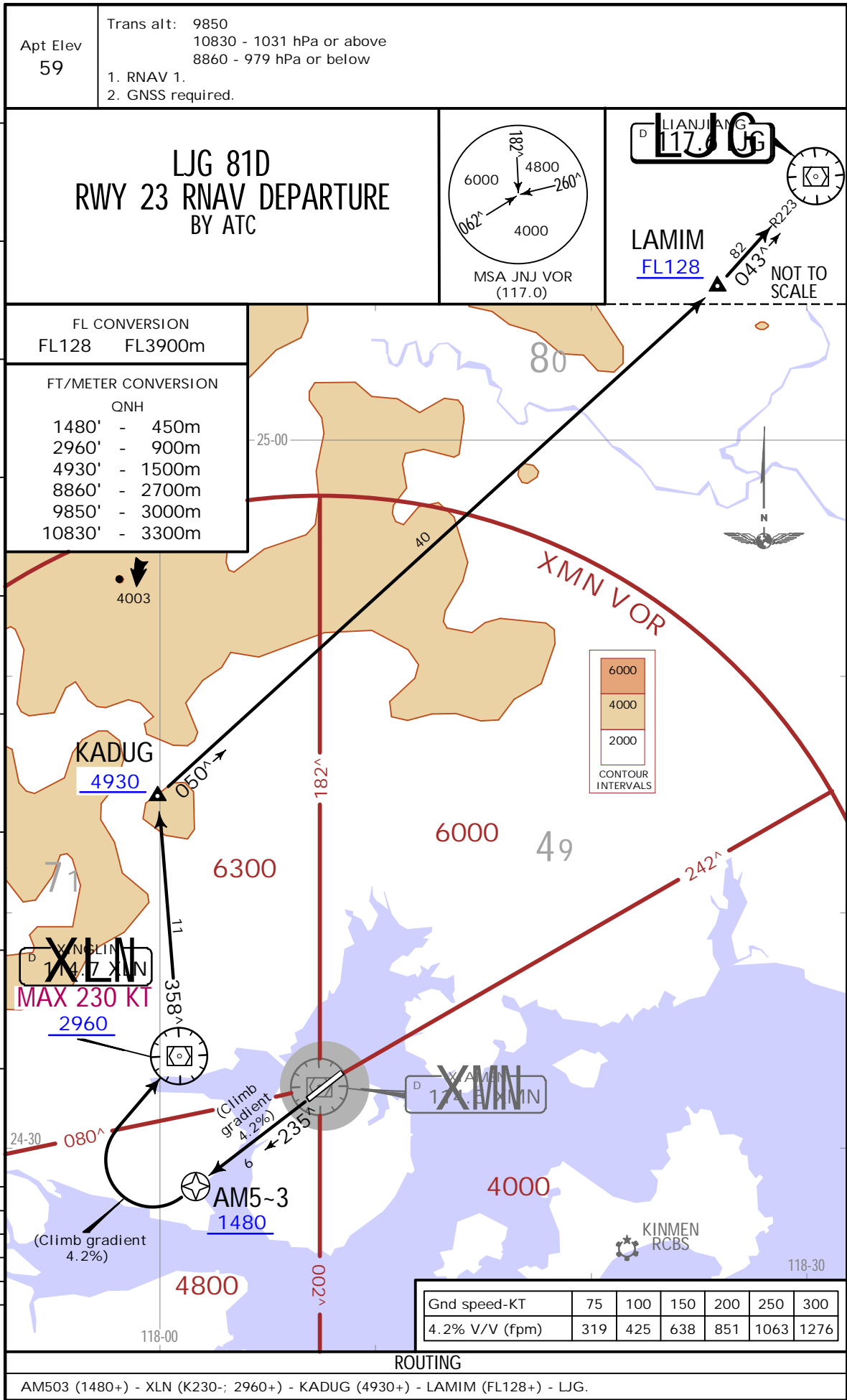
SID	ROUTING
FOG 91D	AM501 (990+) - AM301 (K230-; 3940+) - AM305 (8860+) - ENVEN - FOG.
FOG 92D	AM501 (990+) - AM124 (K200-; 2960+) - XLN - AMURI (8860+) - AM301 - AM305 - ENVEN - FOG.
FOG 93D By ATC	AM501 (990+) - AM303 - FOG.

**ZSAM/XMN**  
 GAOOI

ZSAM/XMN  
GAOQI

JEPPESSEN  
27 DEC 19 (10-3B) .Eff.1.Jan.1600Z.

XIAMEN, PR OF CHINA  
.RNAV.SID.



ZSAM/XMN  
GAOQI

JEPPESSEN

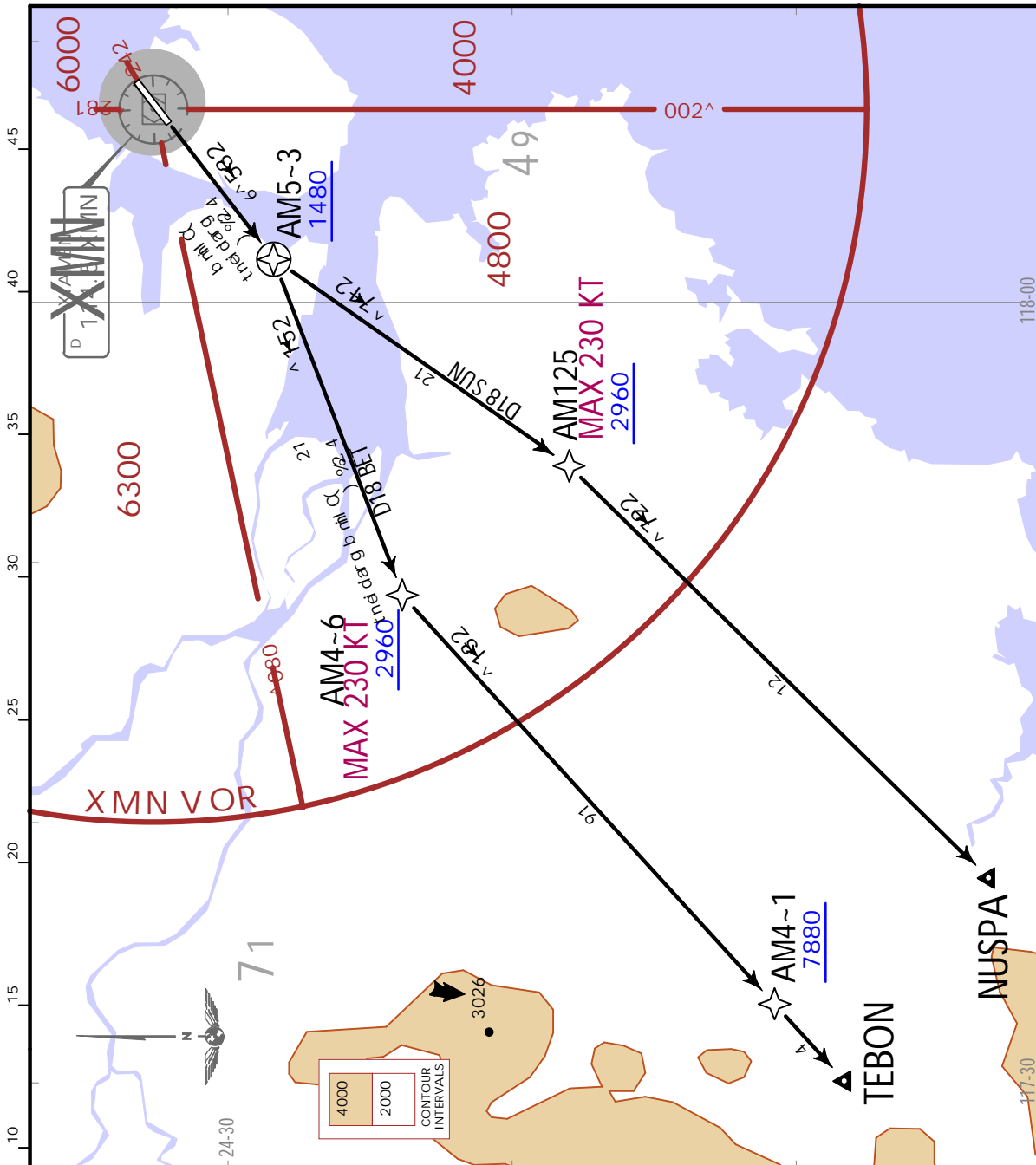
XIAMEN, PR OF CHINA

27 DEC 19

10-3C

.Eff.1.Jan.1600Z.

.RNAV.SID.



Trans alt: 9850  
10830 - 1031 hPa or above  
8860 - 979 hPa or below  
1. RNAV 1.  
2. GNSS required.

**NUS 81D**  
**TEB 81D**  
**RWY 23 RNAV DEPARTURES**

FT/METER CONVERSION

ONH	1480'	450m
2960'	900m	
7880'	2400m	
8860'	2700m	
9850'	3000m	
10830'	3300m	

MSA JNU VOR (117.0)

Grnd speed-KT	75	100	150	200	250	300
4.2% V/V (fpm)	319	425	638	851	1063	1276

SID	ROUTING
NUS 81D	AM503 (1480+) - AM125 (K230+); 2960+ - NUSPA.
TEB 81D	AM503 (1480+) - AM406 (K230+); 2960+ - AM401 (7880+) - TEBON.

**XIAMEN, PR OF CHINA**  
**.RNAV.SID.**

**ZSAM/XMN**  
 27 DEC 19  
 10-3D  
 Eff. 1 Jan. 1600Z.

Apt Elev  
 59

Trans alt: 9850  
 10830 - 1031 hPa or above  
 8860 - 979 hPa or below

1. RNAV 1.  
 2. GNSS required.

**NUS 91D, NUS 92D  
 TEB 91D**

**RWY 05 RNAV DEPARTURES**

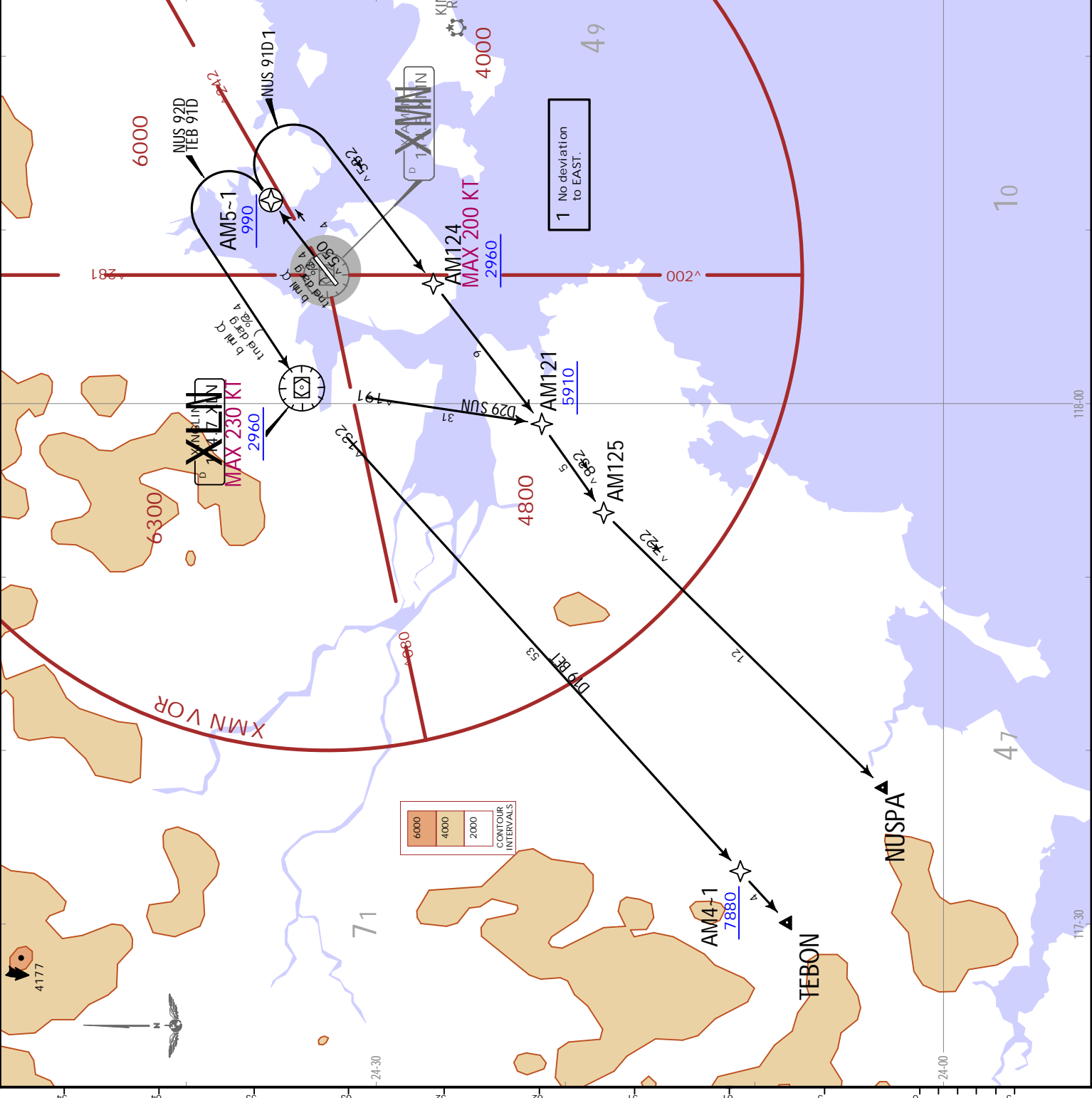
FT./METER CONVERSION

990'	-	300m
2960'	-	900m
5910'	-	1800m
7880'	-	2400m
8860'	-	2700m
9850'	-	3000m
10830'	-	3300m

QNH

MSA JNU VOR  
 (117.0)

SID		ROUTING					
NUS 91D	AM501 (990+) - AM124 (K200-; 2960+) - AM121 (5910+) - AM125 - NUSPA.	75	100	150	200	250	300
NUS 92D	AM501 (990+) - XLN (K230-; 2960+) - AM121 (5910+) - AM125 - NUSPA.	327	435	653	871	1089	1306
TEB 91D	AM501 (990+) - XLN (K230-; 2960+) - AM401 (7880+) - TEBON.						



ZSAM/XMN  
GAOQI

JEPPESSEN 27 DEC 19 10-3F .Eff.1.Jan.1600Z.

XIAMEN, PR OF CHINA  
.SID.

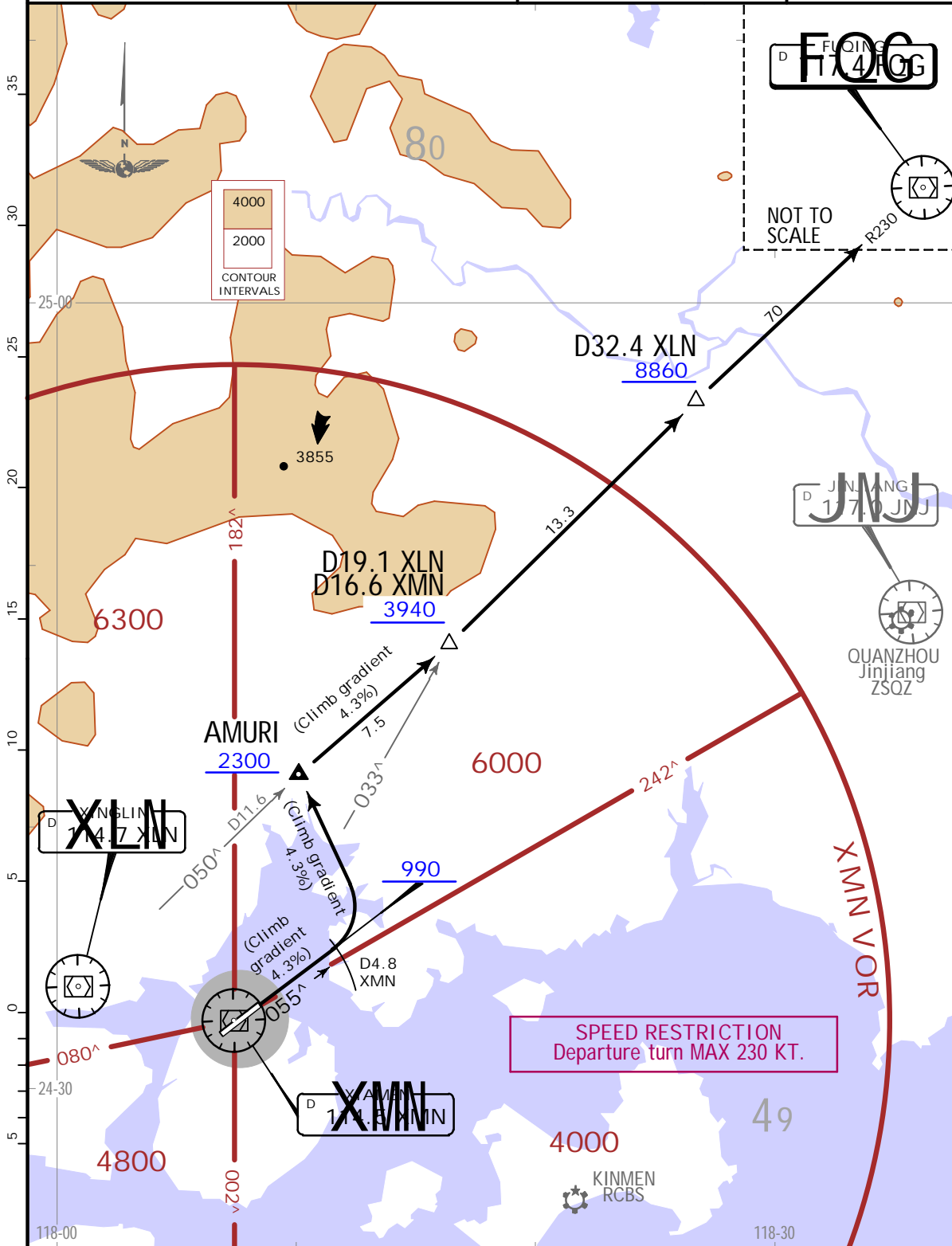
Apt Elev 59	Trans alt: 9850 10830 - 1031 hPa or above 8860 - 979 hPa or below
----------------	---

FOG ~1D RWY 05 DEPARTURE						
Gnd speed-KT	75	100	150	200	250	300
4.3% V/V (fpm)	327	435	653	871	1089	1306

FT/METER CONVERSION	
QNH	
990'	- 300m
2300'	- 700m
3940'	- 1200m
8860'	- 2700m
9850'	- 3000m
10830'	- 3300m

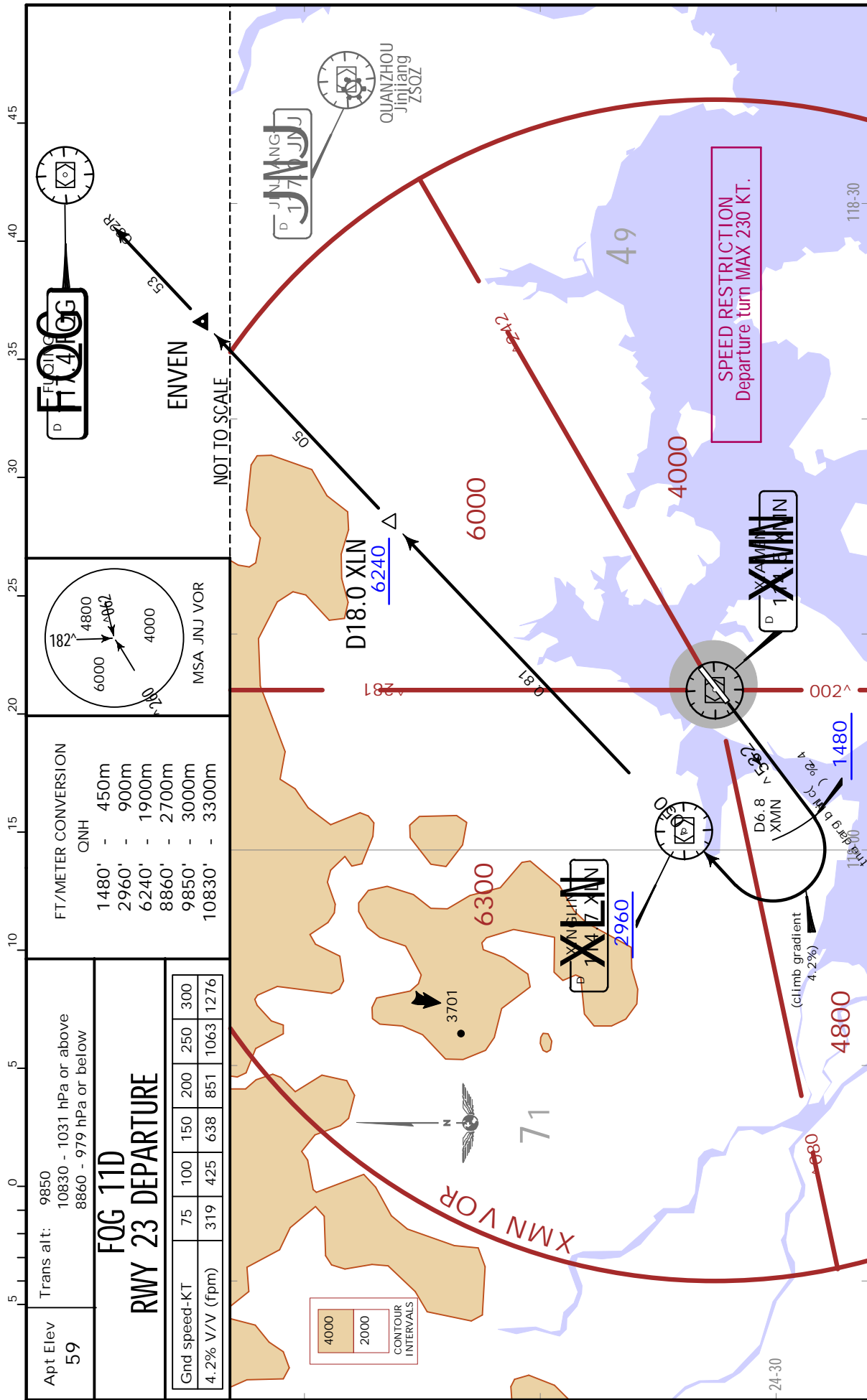
CHANGES: SID redesignated & revised; new format.



ZSAM/XMN  
GAOQI

JEPPesen 27 DEC 19 10-3G Eff. 1 Jan. 1600Z.

XIAMEN, PR OF CHINA  
.SID.



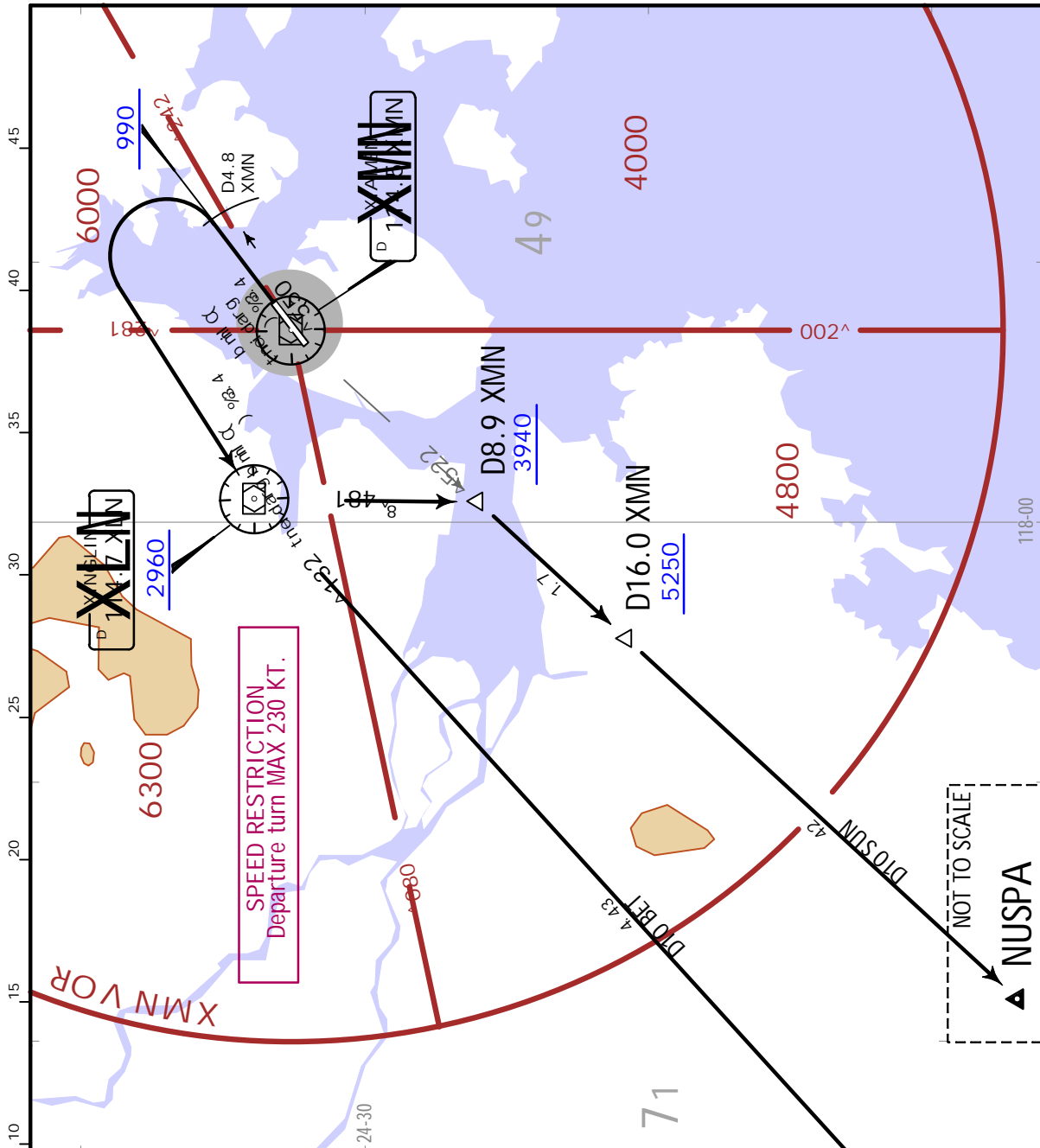
ZSAM/XMN  
GAOQI

JEPPESSEN

XIAMEN, PR OF CHINA

27 DEC 19 (10-3H) Eff. 1 Jan. 1600Z.

.SID.



Apt Elev  
59

Trans alt: 9850  
10830 - 1031 hPa or above  
8860 - 979 hPa or below

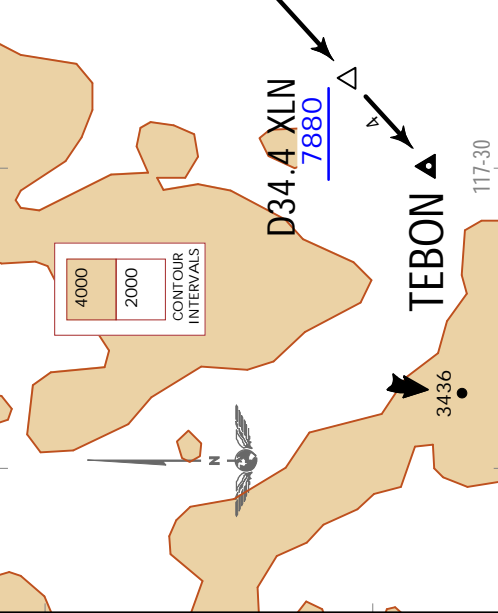
**NUS ~1D**  
**TEB ~1D**  
**RWY 05 DEPARTURE**

Gnd speed-KT	75	100	150	200	250	300
4.3% V/V (fpm)	327	435	653	871	1089	1306

FT./METER CONVERSION

QNH	990' - 300m
	2960' - 900m
	3940' - 1200m
	5250' - 1600m
	7880' - 2400m
	8860' - 2700m
	9850' - 3000m
	10830' - 3300m

MSA JNJ VOR (117.0)





ZSAM/XMN

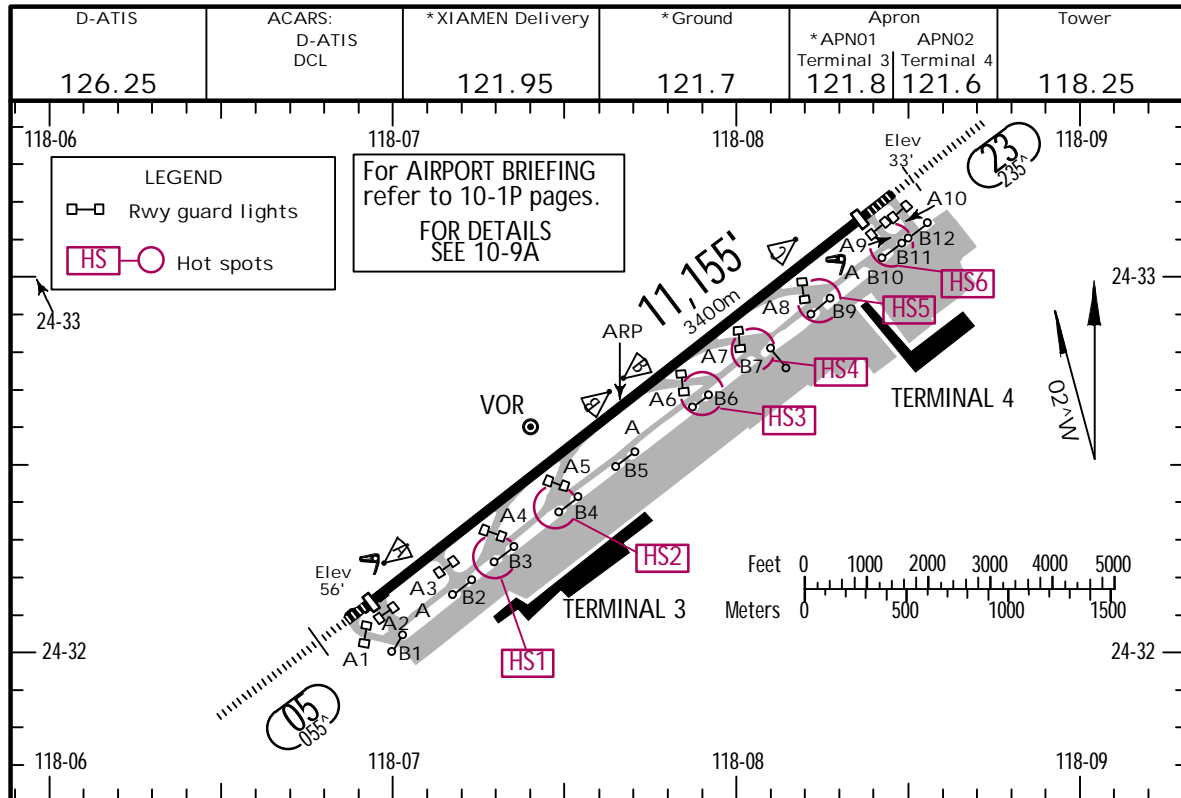
JEPPESEN

XIAMEN, PR OF CHINA

Apt Elev 59  
N24 32.7 E118 07.6

29 JUL 22 (10-9).Eff.10.Aug.1600Z.

GAOQI



ADDITIONAL RUNWAY INFORMATION

RWY	HIRL(60m) CL(30m) HIALS SFL PAPI-L (3.0^)	1 RVR	USABLE LENGTHS		TAKE-OFF	WIDTH
			Threshold	Glide Slope		
05			10,663' 3250m	9662' 2945m	3	148' 45m
23			10,007' 3050m	9039' 2755m		

- 1 HSTIL-A6, A7 & A8
- 2 HSTIL-A4 & A5
- 3 TAKE-OFF RUN AVAILABLE

RWY 05:

From runway head 11,155' (3400m)  
twy A2 int 10,564' (3220m)  
twy A3 int 9,350' (2850m)

RWY 23:

From runway head 10,663' (3250m)  
twy A9 int 10,171' (3100m)

.Standard.

TAKE-OFF

		RL		NIL (DAY only)	
		RVR	VIS	RVR	VIS
2 TURB Eng or 3 & 4 Eng	A	RVR 400m VIS 800m		RVR 500m VIS 800m	
	B				
	C				
	D				
Other 1 & 2 Eng		Minimums not established by CAAC			

# ZSAM/XMN



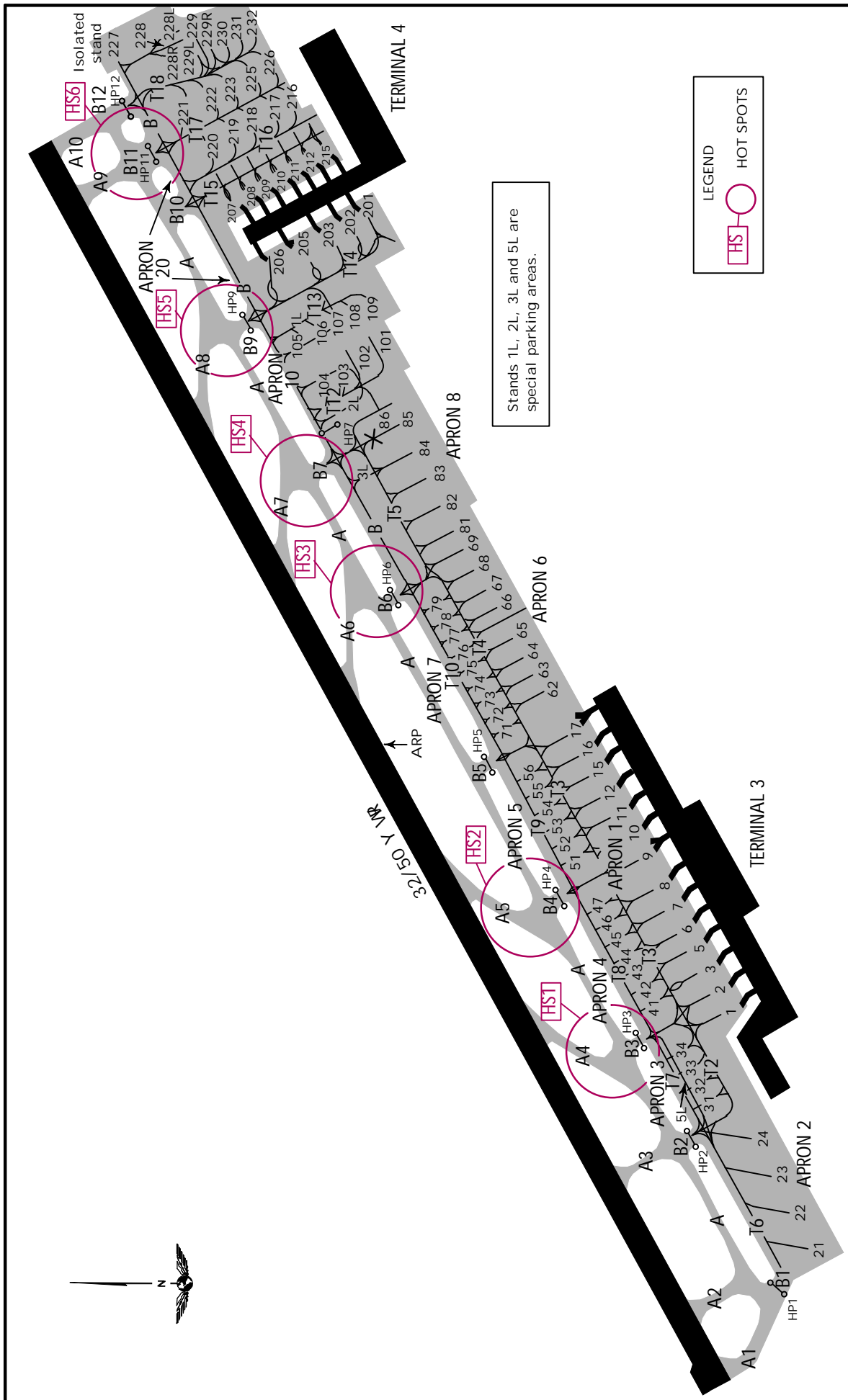
# XIAMEN, PR OF CHINA

29 JUL 22

10-9A

.Eff.10.Aug.1600Z.

GAOQI

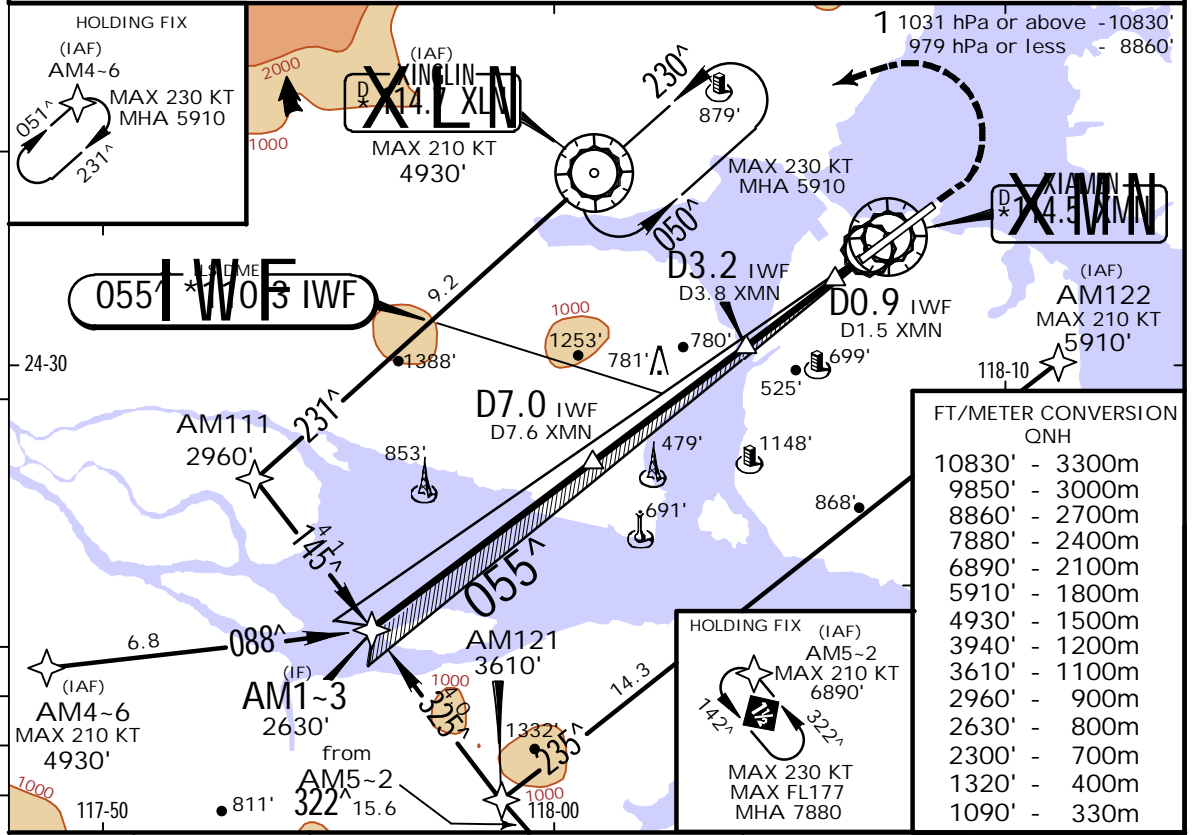
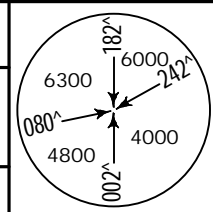


ZSAM/XMN  
GAOQI

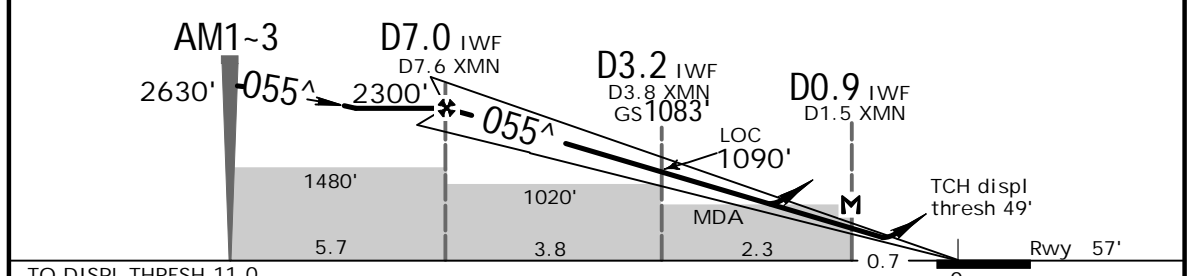
JEPPESEN  
1 JAN 21 (11-1)

XIAMEN, PR OF CHINA  
RNAV ILS DME Z Rwy 05

D-ATIS 126.25	APP01 121.35	XIAMEN Approach (R) APPO2 120.2	*APP03 123.825	*APP04 125.025	XIAMEN Tower 118.25	*Ground 121.7
LOC IWF *110.3	Final Apch Crs 055^	D3.2 IWF 1083' (1026')		ILS DA(H) Refer to Minimums	Apt Elev 59' Rwy 57'	
MISSED APCH: Climb STRAIGHT AHEAD to 1320', then turn LEFT (MAX 200 KT) to reach XLN VOR at 3940', join holding, then by ATC.						MSA XMN VOR
Alt Set: hPa		Rwy Elev: 2 hPa		Trans level: FL 118		Trans alt: 9850' 1
Do not mistake fluorescent lights at the sides of airport road for PAPI lights.						



LOC (GS out)	IWF DME	6.0	5.0	4.0	3.0
	ALTITUDE	1970'	1650'	1330'	1020'



TO DISPL THRESH 11.0						Gnd speed-Kts	70	90	100	120	140	160	HIALS	1320'	200 KT	3940'	XLN	114.7
						ILS GS or	3.00^	372	478	531	637	743	849	PAPI				
						LOC Descent Angle												
						MAP at D0.9 IWF/D1.5 XMN												

PANS OPS	Standard				STRAIGHT-IN LANDING RWY 05				CIRCLE-TO-LAND					
	MACG MIN 3.0%				MACG 2.5%				Not authorized East of rwy					
	DA(H) 257' (200')		A: 287' (230')		B: 303' (246')		CDFA 730' (673')		Max Kts		MDA(H)		VIS	
	FULL		ALS out		FULL		ALS out							
A				RVR 550m 1	1200m			3000m	100	1020' (961')	4400m			
B	RVR 550m 1			1200m					135					
C				800m	1300m			3200m	180	1220' (1161')	4800m			
D								3400m	205	1740' (1681')	5000m			

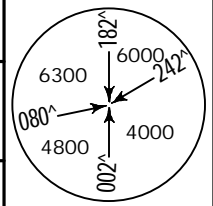
1 RVR 750m when a Flight Director or Autopilot or HUD to DA is not used. CHANGES: APP03 and APP04 frequencies established. JEPPESEN, 2012, 2021. ALL RIGHTS RESERVED.

ZSAM/XMN  
GAOQI

JEPPESEN  
1 JAN 21 (11-2)

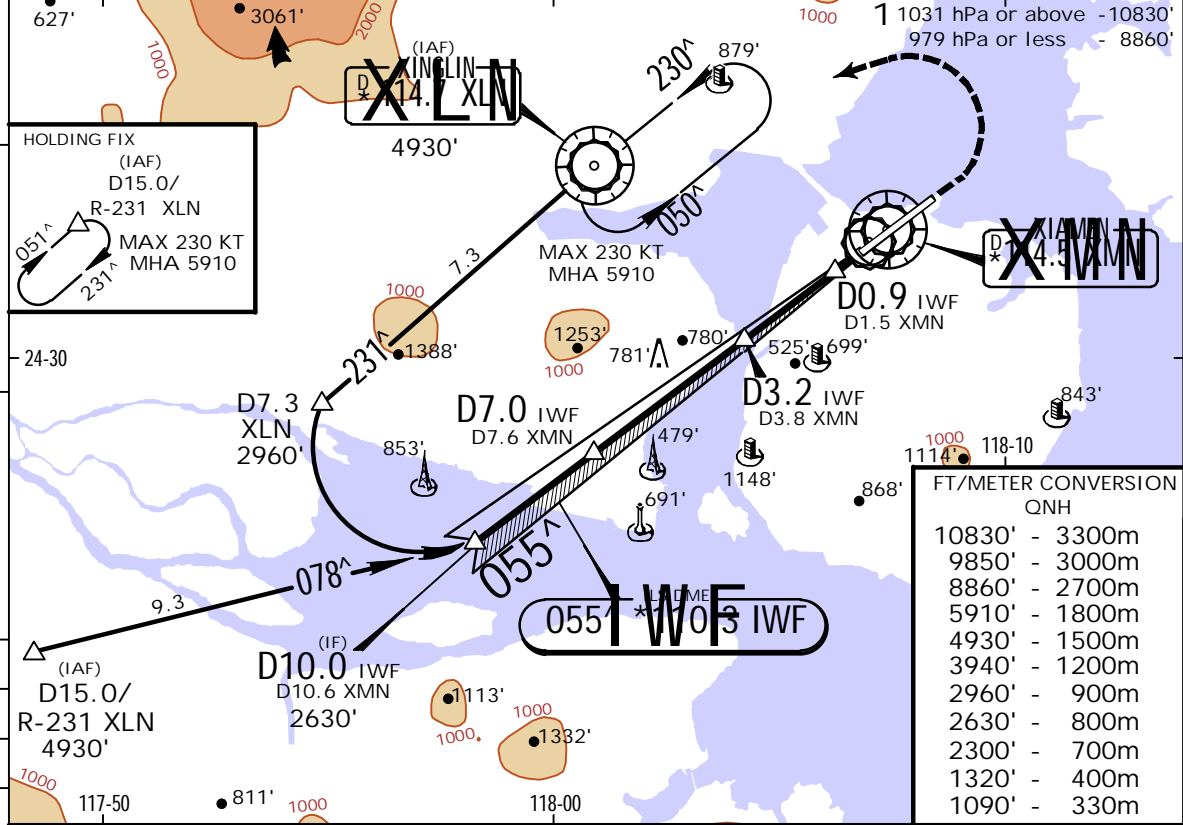
XIAMEN, PR OF CHINA  
ILS DME Y Rwy 05

D-ATIS 126.25	APP01 121.35	XIAMEN Approach (R) APPO2 120.2	*APP03 123.825	*APP04 125.025	XIAMEN Tower 118.25	*Ground 121.7
LOC IWF *110.3	Final Apch Crs 055 <sup>^</sup>	D3.2 IWF 1083' (1026')		ILS DA(H) Refer to Minimums	Apt Elev 59'	Rwy 57'



MISSED APCH: Climb STRAIGHT AHEAD to 1320', then turn LEFT (MAX 200 KT) to reach XLN VOR at 3940', join holding, then by ATC.  
MSA XMN VOR

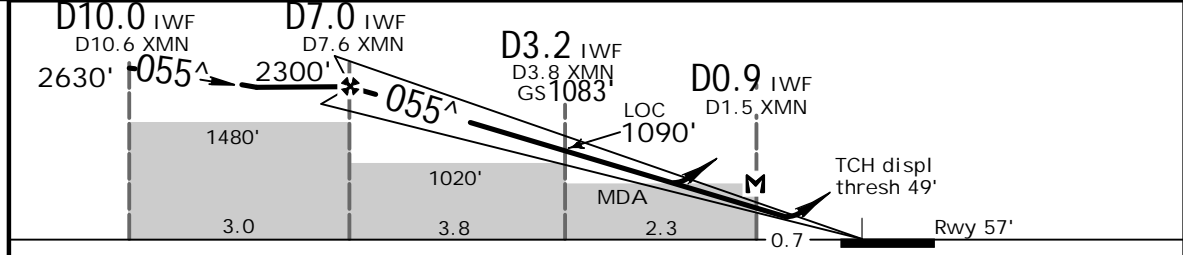
Alt Set: hPa Rwy Elev: 2 hPa Trans level: FL 118 Trans alt: 9850' 1  
1. Initial apch MAX 205 KT. 2. Do not mistake fluorescent lights at the sides of airport road for PAPI lights.



FT/METER CONVERSION  
QNH

10830'	-	3300m
9850'	-	3000m
8860'	-	2700m
5910'	-	1800m
4930'	-	1500m
3940'	-	1200m
2960'	-	900m
2630'	-	800m
2300'	-	700m
1320'	-	400m
1090'	-	330m

LOC (GS out)	IWF DME	6.0	5.0	4.0	3.0
ALTITUDE		1970'	1650'	1330'	1020'



Gnd speed-Kts	70	90	100	120	140	160	HIALS	1320'	200 KT	3940'	XLN
ILS GS or LOC Descent Angle	3.00 <sup>^</sup>	372	478	531	637	743	849	PAPI	↑	↑	114.7

PANS OPS	Standard ILS STRAIGHT-IN LANDING RWY 05				CIRCLE-TO-LAND			
	MACG MIN 3.0%		MACG 2.5%		LOC (GS out)		Not authorized East of rwy	
	DA(H) 257' (200')	DA(H) A: 287' (230')	B: 303' (246')	CD: 319' (262')	MDA(H) 730' (673')			
	FULL	ALS out	FULL	ALS out	ALS out	Max Kts	MDA(H)	VIS
A		RVR 550m 1 vis 800m	1200m		100	1020' (961')	4400m	
B	RVR 550m 1 vis 800m	1200m			135			
C		800m	1300m		180	1220' (1161')	4800m	
D					205	1740' (1681')	5000m	

1 RVR 750m when a Flight Director or Autopilot or HUD to DA is not used.  
CHANGES: APP03 and APP04 frequencies established. | JEPPESEN, 2000, 2021. ALL RIGHTS RESERVED.

ZSAM/XMN  
GAOQI

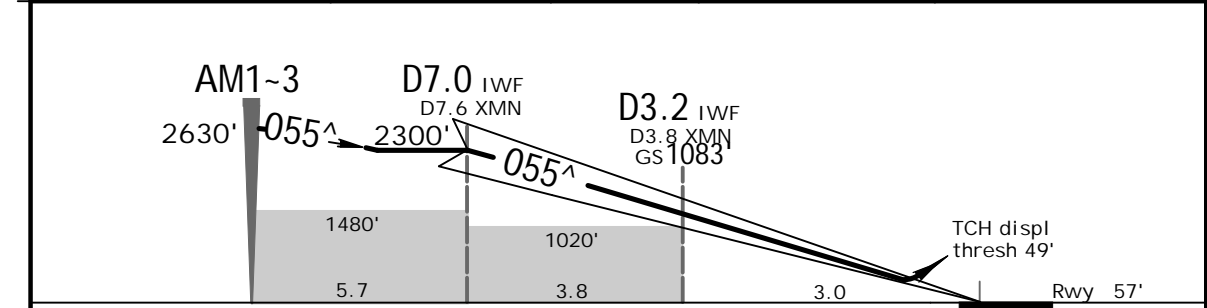
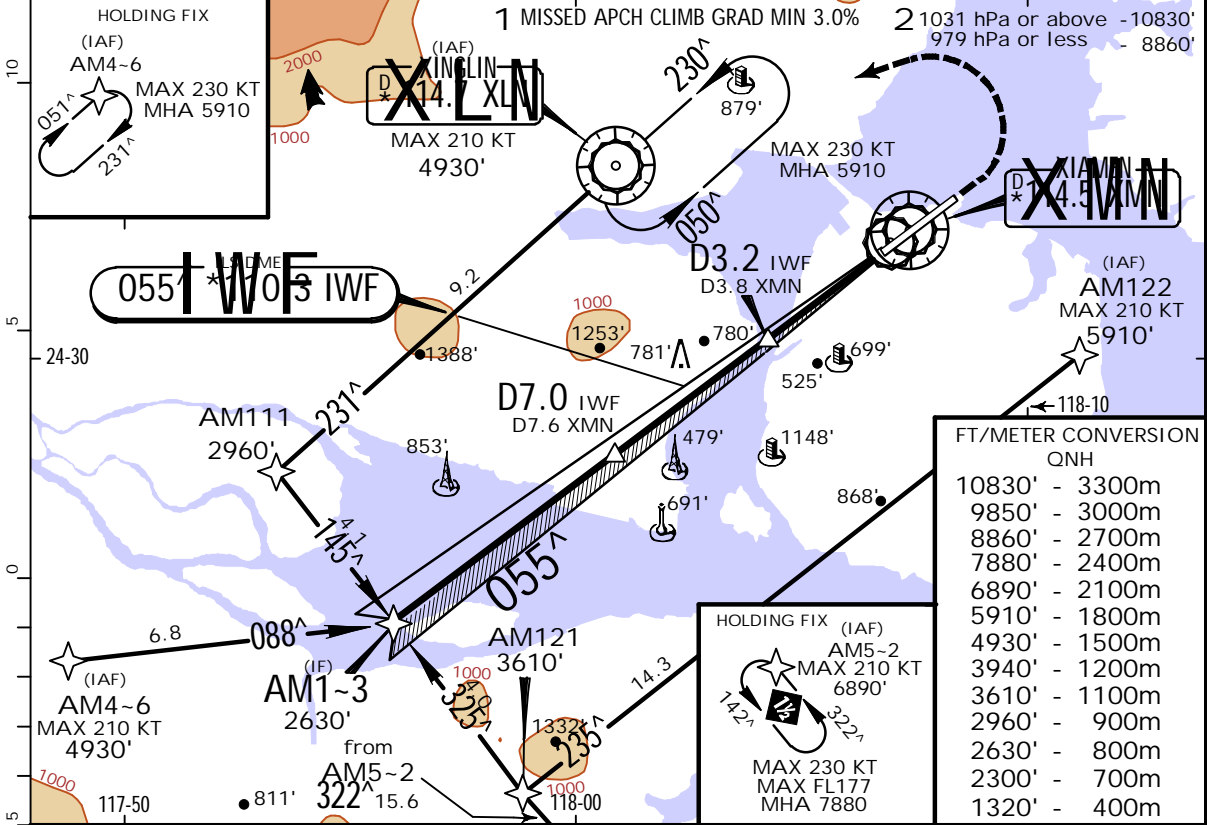
1 JAN 21

11-2A

JEPPESEN

XIAMEN, PR OF CHINA  
1 SA CAT I RNAV ILS DME Z Rwy 05

BRIEFING STRIP	D-ATIS 126.25	XIAMEN Approach (R) APP01 121.35 APP02 120.2 *APP03 123.825 *APP04 125.025			XIAMEN Tower 118.25	*Ground 121.7	
	LOC IWF *110.3	Final Apch Crs 055^	D3.2 IWF 1083' (1026')	SA CAT I ILS RA 180' DA(H) 207' (150')	Apt Elev 59'	Rwy 57'	
	MISSED APCH: Climb STRAIGHT AHEAD to 1320', then turn LEFT (MAX 200 KT) to reach XLN VOR at 3940', join holding, then by ATC.						
Alt Set: hPa		Rwy Elev: 2 hPa		Trans level: FL 118		Trans alt: 9850' 2	
1. Special Aircrew & Acft Certification required. 2. Do not mistake fluorescent lights at the sides of airport road for PAPI lights.							



TO DISPL THRESH 11.0								
Gnd speed-Kts	70	90	100	120	140			
GS	3.00^	372	478	531	637	743	849	

.Standard.  
STRAIGHT-IN LANDING RWY 05  
SA CAT I ILS 1  
Missed Apch climb gradient MIN 3.0%  
RA 180'  
DA(H) 207' (150')

RVR 450m  
1 HUD required.

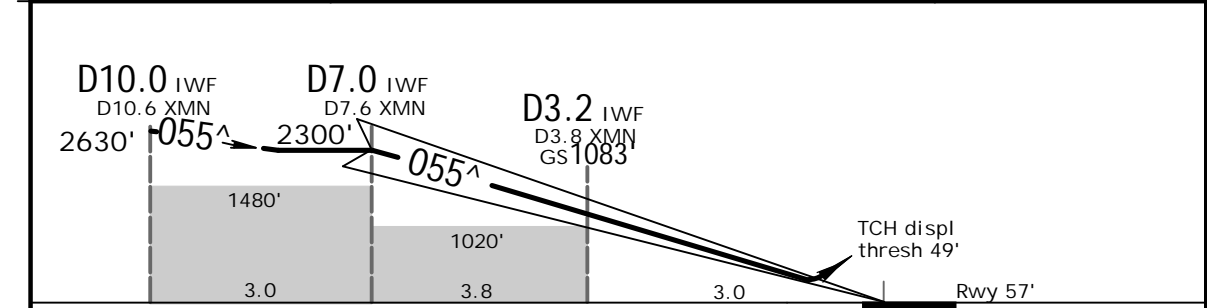
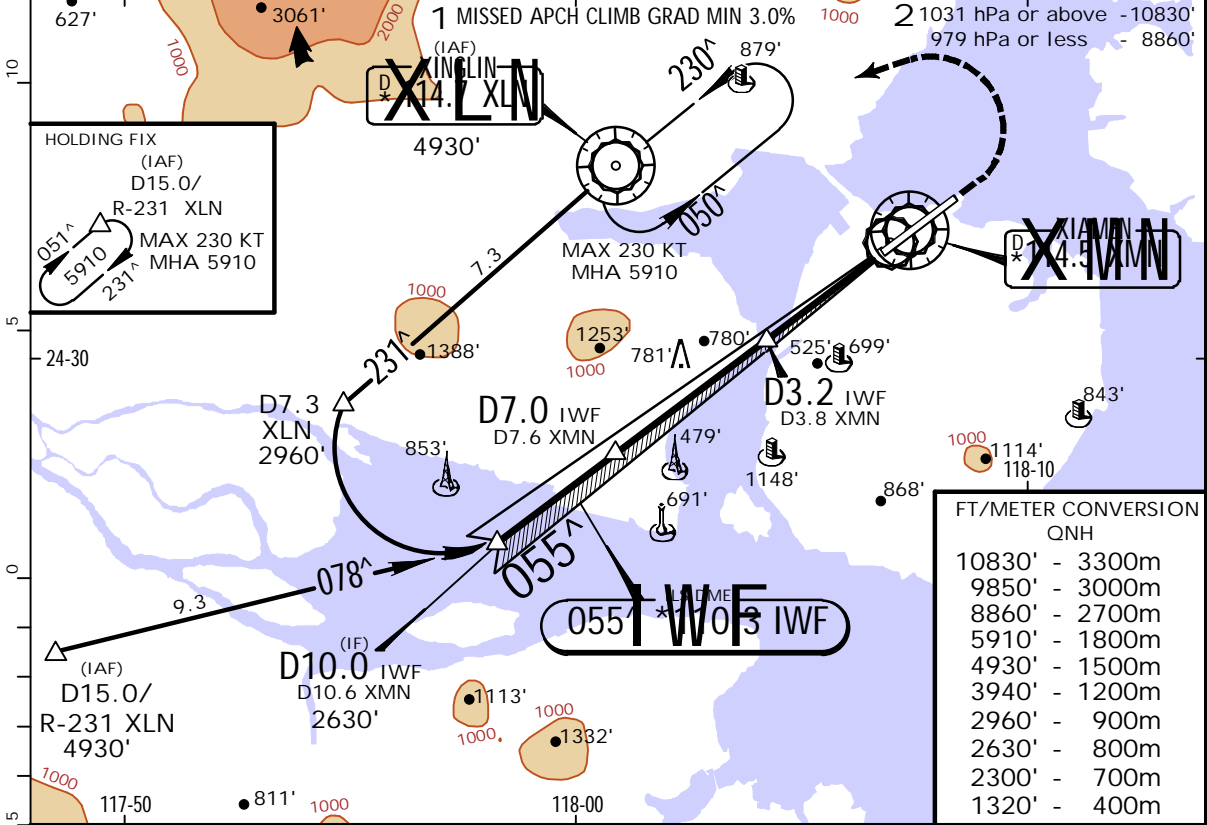


ZSAM/XMN  
GAOQI

JEPPESEN XIAMEN, PR OF CHINA  
1 JAN 21 (11-2B) 1 SA CAT I ILS DME Y Rwy 05

D-ATIS 126.25	APP01 121.35	XIAMEN Approach (R) APPO2 120.2	*APP03 123.825	*APP04 125.025	XIAMEN Tower 118.25	*Ground 121.7
LOC IWF *110.3	Final Apch Crs 055 <sup>^</sup>	D3.2 IWF 1083' (1026')	SA CAT I ILS RA 180' DA(H) 207' (150')	Apt Elev 59' Rwy 57'		

MISSED APCH: Climb STRAIGHT AHEAD to 1320', then turn LEFT (MAX 200 KT) to reach XLN VOR at 3940', join holding, then by ATC.  
 Alt Set: hPa Rwy Elev: 2 hPa Trans level: FL 118 Trans alt: 9850' 2  
 1. Special Aircrew & Aclft Certification required. 2. Initial apch MAX 205 KT. 3. Do not mistake fluorescent lights at the sides of airport road for PAPI lights.



Gnd speed-Kts	70	90	100	120	140	160		1320'	200 KT	3940'	XLN 114.7
GS	3.00 <sup>^</sup>	372	478	531	637	849		↑	MAX LT	↑	

.Standard. STRAIGHT-IN LANDING RWY 05  
 SA CAT I ILS 1  
 Missed Apch climb gradient MIN 3.0%  
 RA 180'  
 DA(H) 207' (150')

RVR 450m  
 1 HUD required.

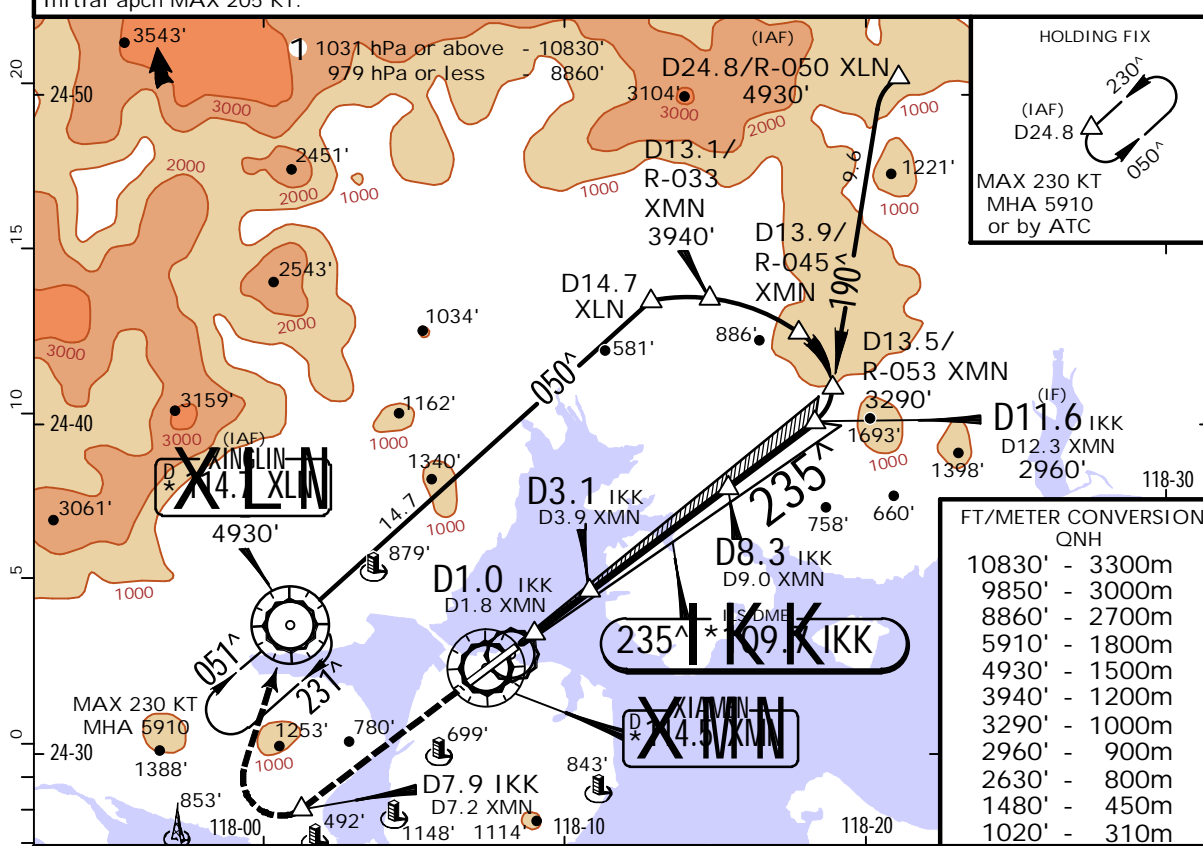


ZSAM/XMN  
GAOQI

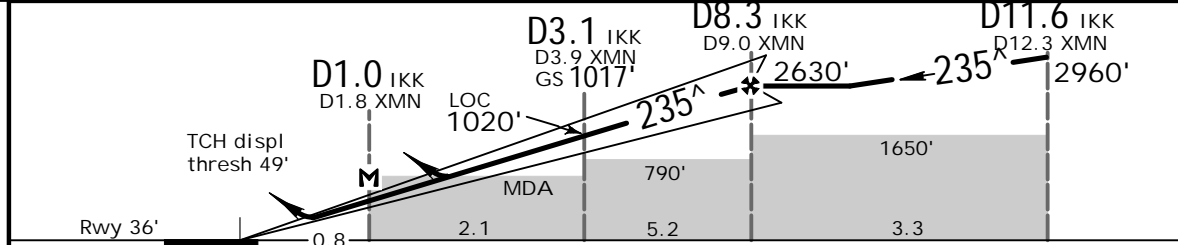
JEPPESEN  
1 JAN 21 (11-4)

XIAMEN, PR OF CHINA  
ILS DME Y Rwy 23

BRIEFING STRIP	D-ATIS	XIAMEN Approach (R)				XIAMEN Tower	*Ground
	126.25	APP01 121.35	APP02 120.2	*APP03 123.825	*APP04 125.025	118.25	121.7
	LOC IKK *109.7	Final Apch Crs 235 <sup>^</sup>	D3.1 IKK 1017' (981')		ILS DA(H) Refer to Minimums	Apt Elev 59' Rwy 36'	
MISSED APCH: Climb STRAIGHT AHEAD to 1480' or above at D7.9 IKK (D7.2 XMN), then turn RIGHT (MAX 200 KT) to reach XLN VOR at 2960', join holding, then by ATC.							<p>MSA XMN VOR</p>
Alt Set: hPa		Rwy Elev: 1 hPa		Trans level: FL 118		Trans alt: 9850' 1	
Initial apch MAX 205 KT.							



LOC (GS out)	IKK DME	2.0	3.0	4.0	5.0	6.0	7.0	8.0
	ALTITUDE	670'	1000'	1310'	1630'	1950'	2270'	2590'



Gnd speed-Kts	70	90	100	120	140	160		1480' or above at D7.9 IKK
ILS GS or LOC Descent Angle	3.00 <sup>^</sup>	372	478	531	637	849		
MAP at D1.0 IKK/D1.8 XMN								

PANS OPS	Standard				LOC (GS out) CDFA		CIRCLE-TO-LAND Not authorized East of rwy	
	MIN 3.0% Missed Apch climb grad 2.5%		DA(H) 236' (200')		DA(H) 430' (394')		MDA(H) 560' (524')	
	FULL		ALS out		FULL		ALS out	
	A	RVR 550m 1	1200m	1600m	2400m	1020' (961')	4400m	
B								
C	VIS 800m		1800m	2600m	1220' (1161')	4800m		
D				2800m	1740' (1681')	5000m		
1 RVR 750m when a Flight Director or Autopilot or HUD to DA is not used.								

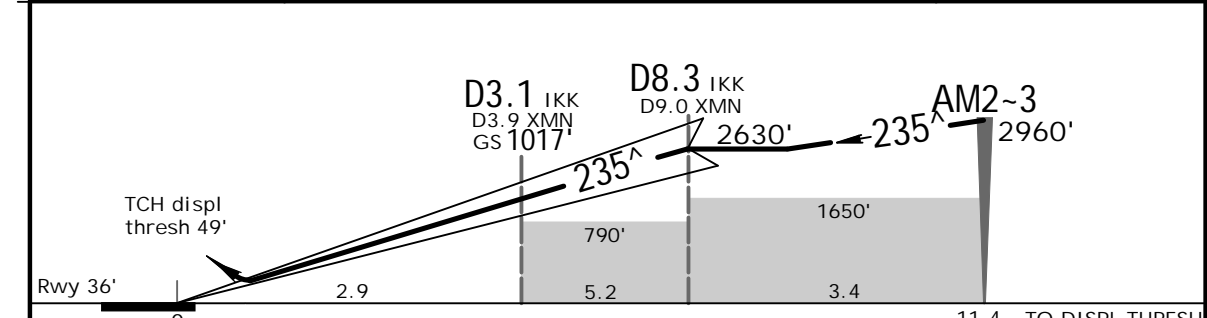
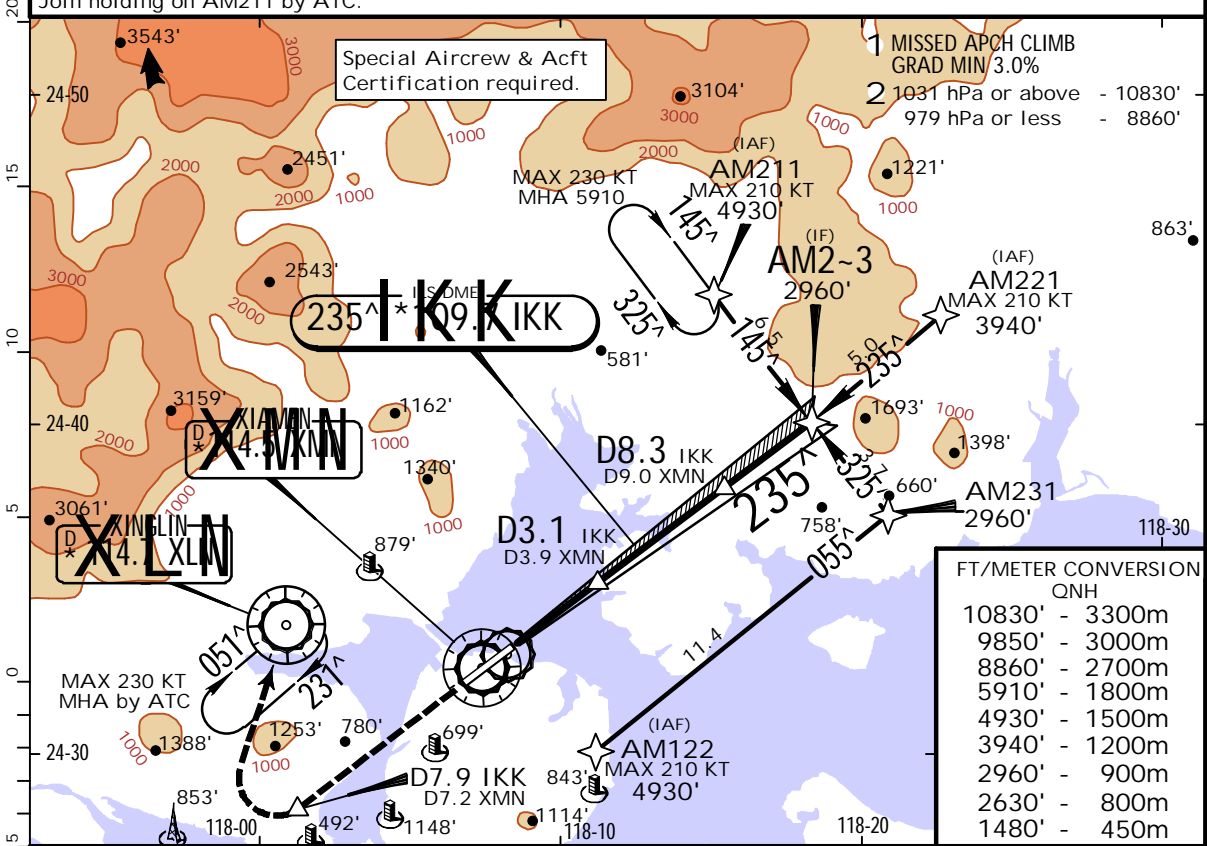
ZSAM/XMN  
GAOQI

1 JAN 21 **11-4A** 1 SA CAT I RNAV ILS DME Z Rwy 23



XIAMEN, PR OF CHINA

BRIEFING STRIP	D-ATIS	XIAMEN Approach (R)				XIAMEN Tower	*Ground
	126.25	APP01 121.35	APP02 120.2	*APP03 123.825	*APP04 125.025	118.25	121.7
LOC IKK *109.7	Final Apch Crs 235 <sup>^</sup>	D3.1 IKK 1017' (981')		SA CAT I ILS RA 164' DA(H) 186' (150')	Apt Elev 59' Rwy 36'		<p>MSA XMN VOR</p>
MISSED APCH: Climb STRAIGHT AHEAD to 1480' or above at D7.9 IKK (D7.2 XMN), then turn RIGHT (MAX 200 KT) to reach XLN VOR at 2960', join holding, then by ATC.							
Alt Set: hPa		Rwy Elev: 1 hPa		Trans level: FL 118		Trans alt: 9850' <b>2</b>	



Gnd speed-Kts	70	90	100	120	140	160	HIALS PAPI 
GS	3.00 <sup>^</sup>	372	478	531	637	849	

.Standard. STRAIGHT-IN LANDING RWY 23  
SA CAT I ILS 1  
Missed Apch climb gradient MIN 3.0%

RA 164'  
DA(H) 186' (150')

RVR 450m

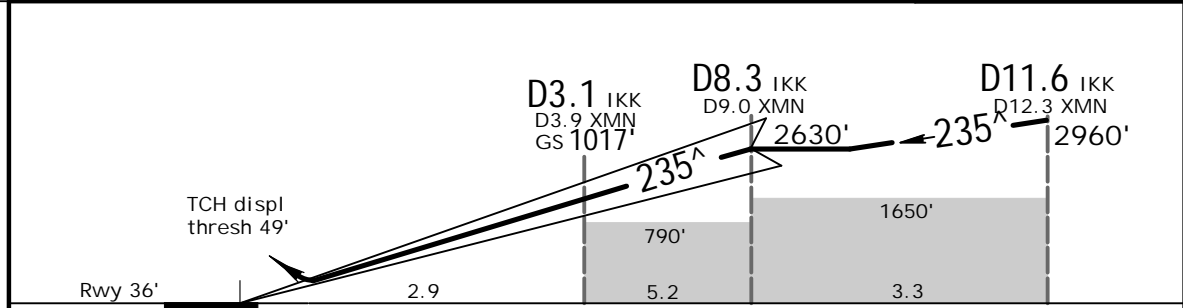
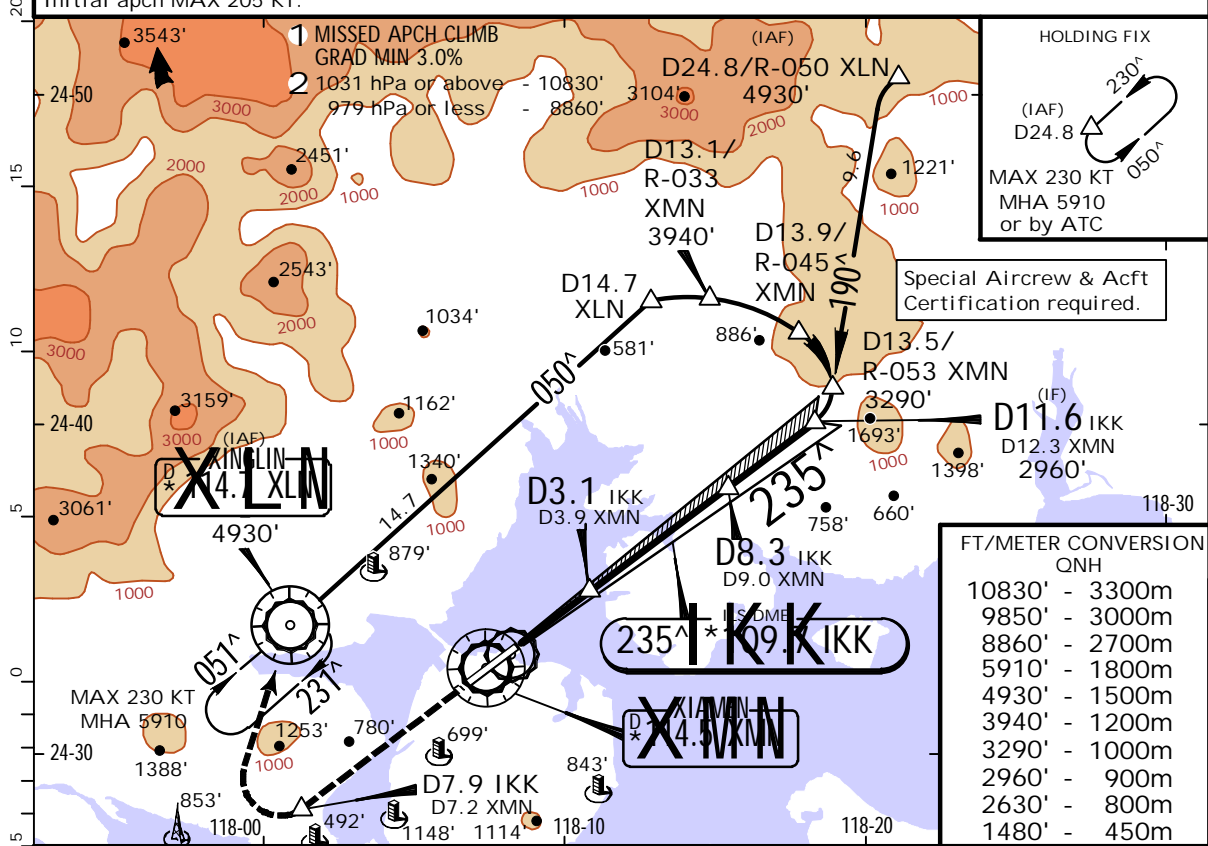
1 HUD required.

PANS OPS

ZSAM/XMN  
GAOQI

JEPPESEN XIAMEN, PR OF CHINA  
1 JAN 21 (11-4B) 1 SA CAT I ILS DME Y Rwy 23

BRIEFING STRIP™	D-ATIS	XIAMEN Approach (R)				XIAMEN Tower	*Ground
	126.25	APP01 121.35	APP02 120.2	*APP03 123.825	*APP04 125.025	118.25	121.7
LOC IKK *109.7	Final Apch Crs 235 <sup>^</sup>	D3.1 IKK 1017' (981')		SA CAT I ILS RA 164' DA(H) 186 (150')		Apt Elev 59' Rwy 36'	
MISSED APCH: Climb STRAIGHT AHEAD to 1480' or above at D7.9 IKK (D7.2 XMN), then turn RIGHT (MAX 200 KT) to reach XLN VOR at 2960', join holding, then by ATC.							<p>MSA XMN VOR</p>
Alt Set: hPa		Rwy Elev: 1 hPa		Trans level: FL 118		Trans alt: 9850' 2	
Initial apch MAX 205 KT.							



Gnd speed-Kts	70	90	100	120	140	160	
GS	3.00 <sup>^</sup>	372	478	531	637	849	

.Standard. STRAIGHT-IN LANDING RWY 23  
 SA CAT I ILS 1  
 Missed Apch climb gradient MIN 3.0%

RA 164'  
 DA(H) 186 (150')

RVR 450m

1 HUD required.

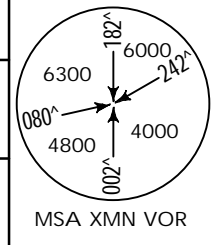


ZSAM/XMN  
GAOQI

JEPPESEN  
1 JAN 21 (13-2)

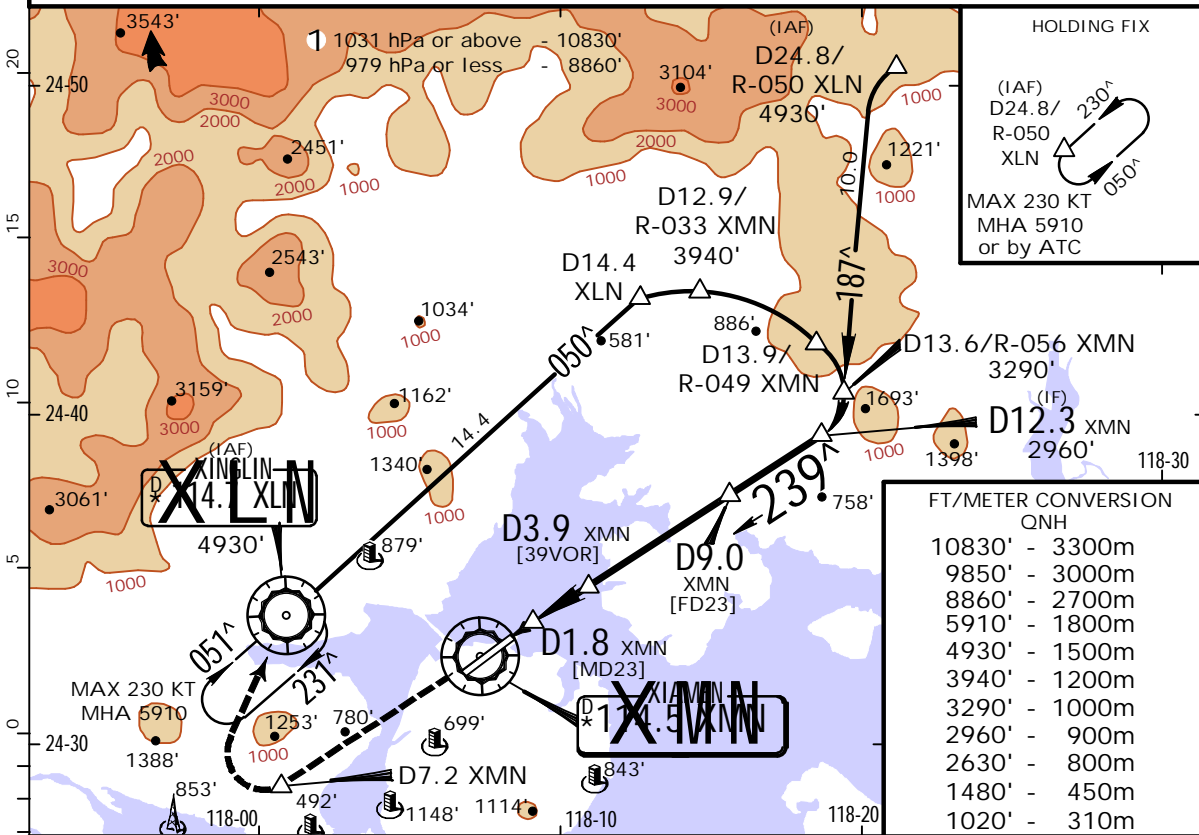
XIAMEN, PR OF CHINA  
VOR DME Rwy 23

BRIEFING STRIP	D-ATIS	XIAMEN Approach (R)				XIAMEN Tower	*Ground
	126.25	APP01 121.35	APP02 120.2	*APP03 123.825	*APP04 125.025	118.25	121.7
	VOR XMN *114.5	Final Apch Crs 239 <sup>^</sup>	D9.0 XMN 2630' (2594')	MDA(H) 760' (724')	Apt Elev 59'	Rwy 36'	



Alt Set: hPa Rwy Elev: 1 hPa Trans level: FL 118 Trans alt: 9850' 1

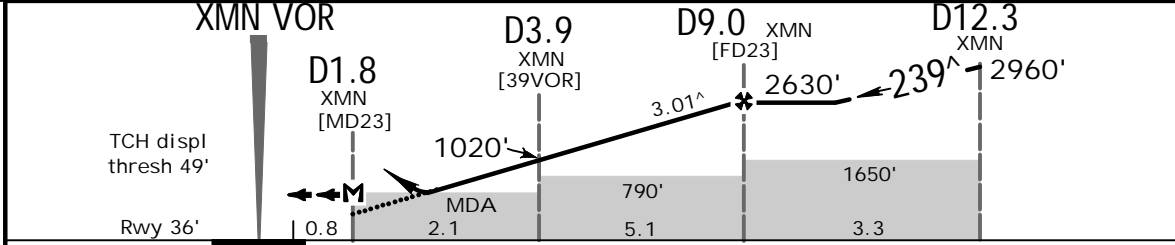
1. Initial apch MAX 205 KT. 2. Final approach track offset 4<sup>^</sup> from rwy centerline.



FT/METER CONVERSION  
QNH

10830'	-	3300m
9850'	-	3000m
8860'	-	2700m
5910'	-	1800m
4930'	-	1500m
3940'	-	1200m
3290'	-	1000m
2960'	-	900m
2630'	-	800m
1480'	-	450m
1020'	-	310m

XMN DME	3.0	4.0	5.0	6.0	7.0	8.0	9.0
ALTITUDE	740'	1050'	1370'	1680'	2000'	2320'	2630'



Gnd speed-Kts	70	90	100	120	140	160		
Descent Angle	3.01 <sup>^</sup>	373	479	532	639	745	852	

PANS OPS	.Standard.				STRAIGHT-IN LANDING RWY 23				CIRCLE-TO-LAND				
					CDFA				Not authorized East of rwy				
					MDA(H) 760' (724')								
					ALS out								
	A									Max Kts	MDA(H)		VIS
B									100	1020' (961')		4400m	
C					3600m				135	1220' (1161')		4800m	
D					3800m				205	1740' (1681')		5000m	

## Chart changes since cycle 06-2023

ADD = added chart, REV = revised chart, DEL = deleted chart.

ACT    PROCEDURE IDENT

INDEX

REV DATE

EFF DATE

**XIAMEN, (GAOQI - ZSAM)**



## TERMINAL CHART CHANGE NOTICES

### No Chart Change Notices for Airport ZSAM

### Chart Change Notices for Country CHN

**Type:** Gen Tmnl

**Effectivity:** Temporary

**Begin Date:** 20210716

**End Date:** Until Further Notice

ZSPD: For Wake Turbulence Re-Categorization (RECAT-CN) Separation Standards see ATC pages.