

## List of pages in this Trip Kit

Trip Kit Index

Airport Information For ZKPY

Terminal Charts For ZKPY

Revision Letter For Cycle 07-2023

Change Notices

Notebook

## General Information

Location: PYONGYANG PRK  
ICAO/IATA: ZKPY / FNJ  
Lat/Long: N39° 12.34', E125° 40.21'  
Elevation: 89 ft

Airport Use: Public  
Daylight Savings: Not Observed  
UTC Conversion: -9:00 = UTC  
Magnetic Variation: 8.0° W

Fuel Types: Jet A-1  
Repair Types: Minor Engine  
Customs: Yes  
Airport Type: IFR  
Landing Fee: Yes  
Control Tower: Yes  
Jet Start Unit: No  
LLWS Alert: No  
Beacon: No

Sunrise: 2102 Z  
Sunset: 1014 Z

## Runway Information

Runway: 17  
Length x Width: 11237 ft x 197 ft  
Surface Type: concrete  
TDZ-Elev: 89 ft  
Lighting: Edge, ALS, Centerline

Runway: 35  
Length x Width: 11237 ft x 197 ft  
Surface Type: concrete  
TDZ-Elev: 79 ft  
Lighting: Edge, ALS, Centerline

## Communication Information

Pyongyang Tower: 118.300  
Pyongyang Approach: 133.900

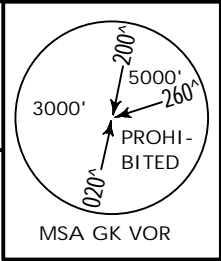
ZKPY/FNJ  
SUNAN

14 AUG 15 **10-2** .Eff.20.Aug.

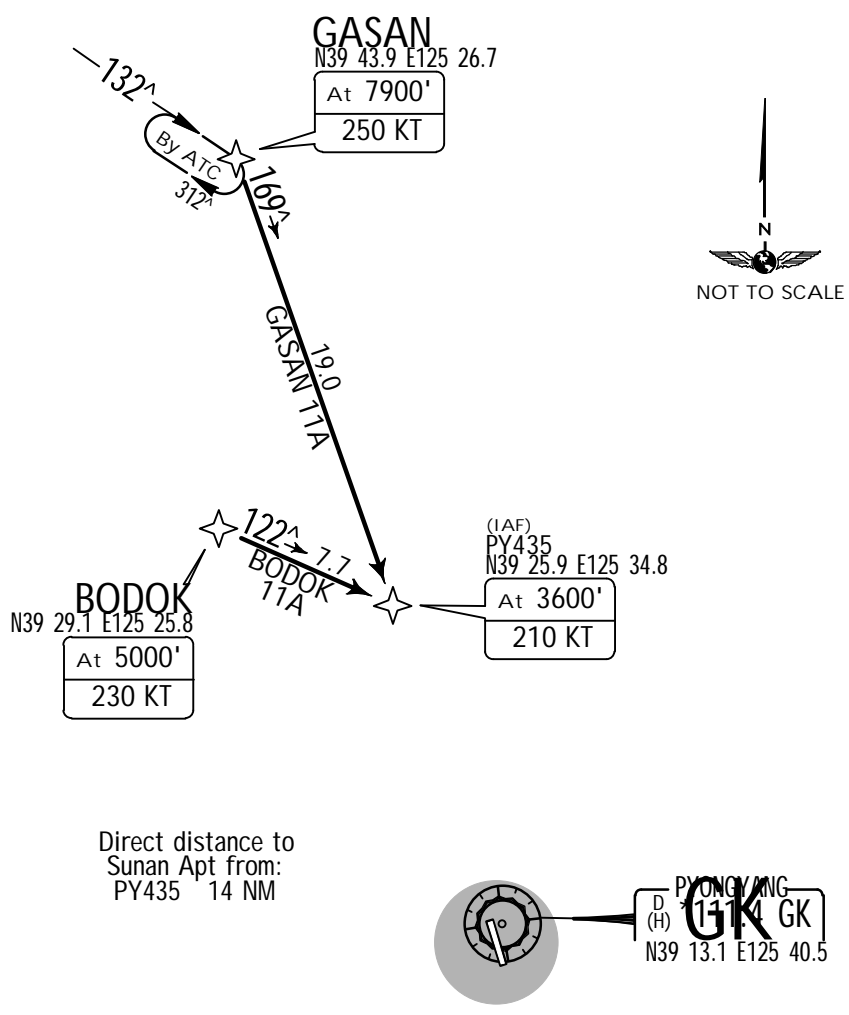
**JEPESEN** PYONGYANG, DPR OF KOREA  
.RNAV.STAR.

Apt Elev  
89'

Alt Set: hPa  
Trans level: FL130 Trans alt: 12000'  
Pilots must obtain approval for RNAV STAR on first contact with ATC and carriage of certified GNSS receiver is mandatory.  
1. RNAV (GNSS). 2. RNP 1.0.



**BODOK 11A [BOD11A]  
GASAN 11A [GAS11A]  
RWY 17 RNAV ARRIVALS**



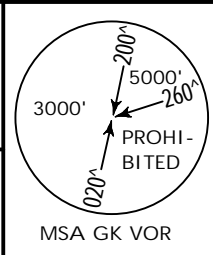
STAR	ROUTING
BODOK 11A	BODOK (5000'; K230) - PY435 (3600'; K210).
GASAN 11A	GASAN (7900'; K250) - PY435 (3600'; K210).

ZKPY/FNJ  
SUNAN

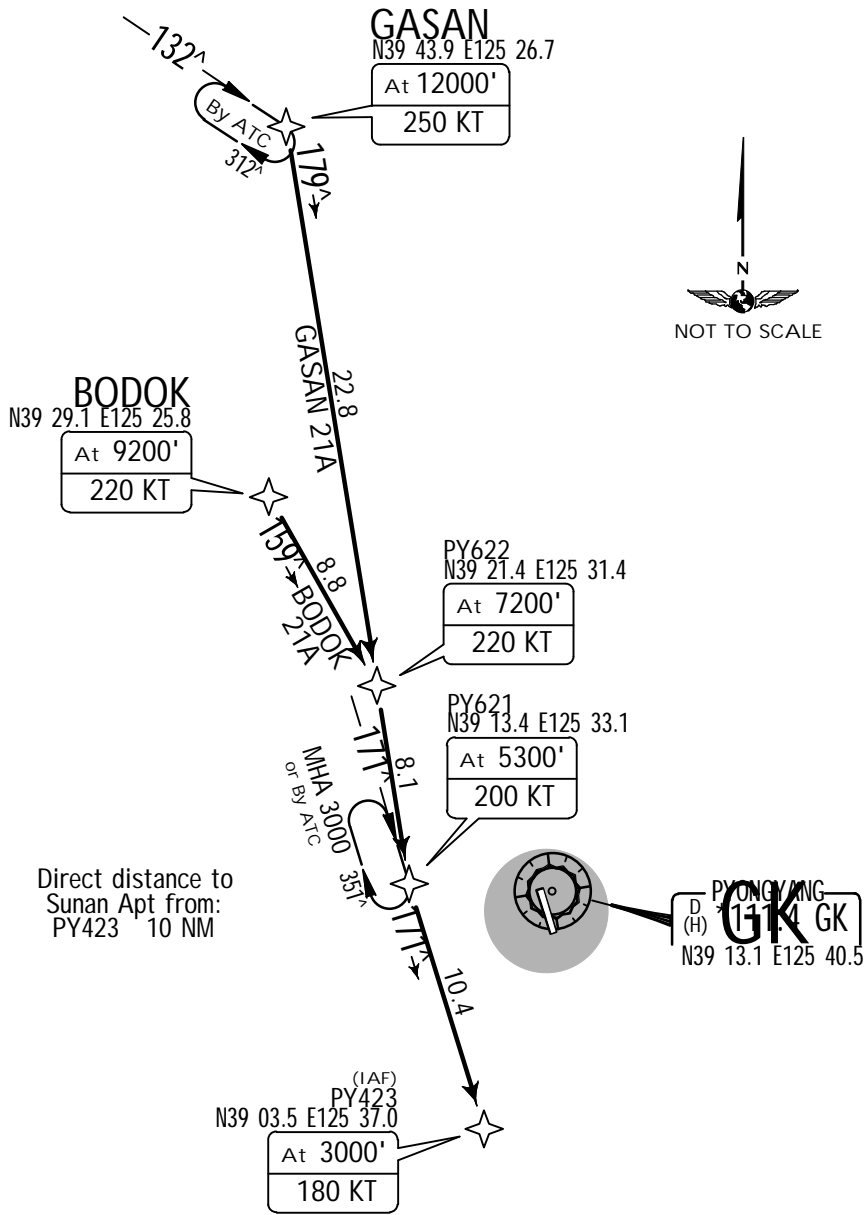
14 AUG 15 (10-2A) .Eff.20.Aug.

JEPESEN PYONGYANG, DPR OF KOREA  
.RNAV.STAR.

Apt Elev 89'  
Alt Set: hPa  
Trans level: FL130 Trans alt: 12000'  
Pilots must obtain approval for RNAV STAR on first contact with ATC and carriage of certified GNSS receiver is mandatory.  
1. RNAV (GNSS). 2. RNP 1.0.



**BODOK 21A [BOD21A]  
GASAN 21A [GAS21A]  
RWY 35 RNAV ARRIVALS**



STAR	ROUTING
BODOK 21A	BODOK (9200'; K220) - PY622 (7200'; K220) - PY621 (5300'; K200) - PY423 (3000'; K180).
GASAN 21A	GASAN (12000'; K250) - PY622 (7200'; K220) - PY621 (5300'; K200) - PY423 (3000'; K180).

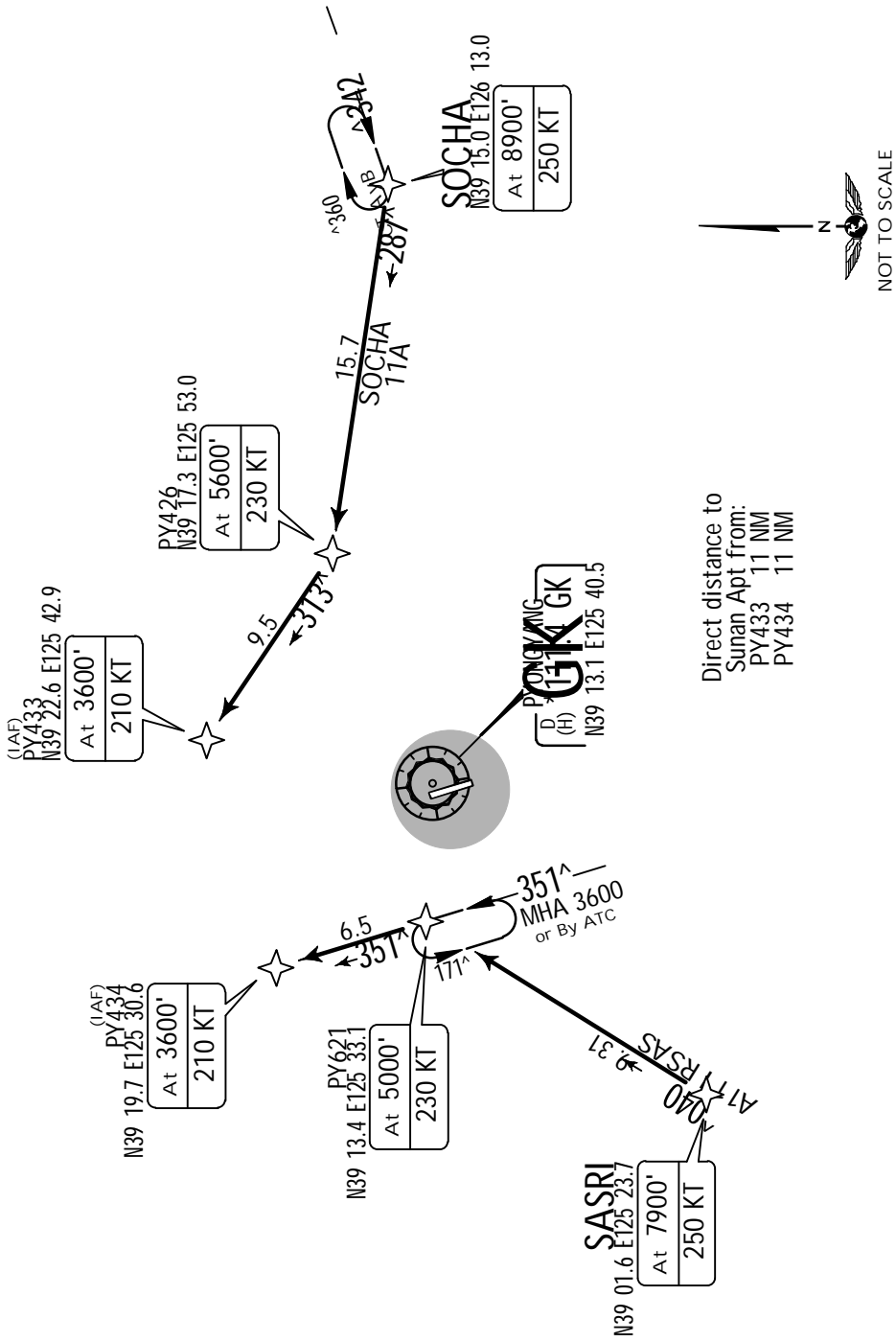
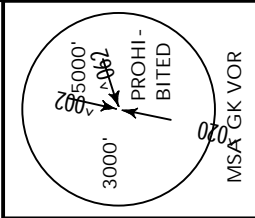
ZKPY/FNJ  
SUNAN

14 AUG 15 (10-2B) .Eff.20.Aug.

JEPPESEN PYONGYANG, DPR OF KOREA  
.RNAV.STAR.

Alt Set: hPa  
Apt Elev 89'  
Trans level: FL130 Trans alt: 12000'  
Pilots must obtain approval for RNAV STAR on first contact with ATC and carriage of certified GNSS receiver is mandatory.  
1. RNAV (GNSS). 2. RNP 1.0.

SASRI 11A [SAS11A]  
SOCHA 11A [SOC11A]  
RWY 17 RNAV ARRIVALS



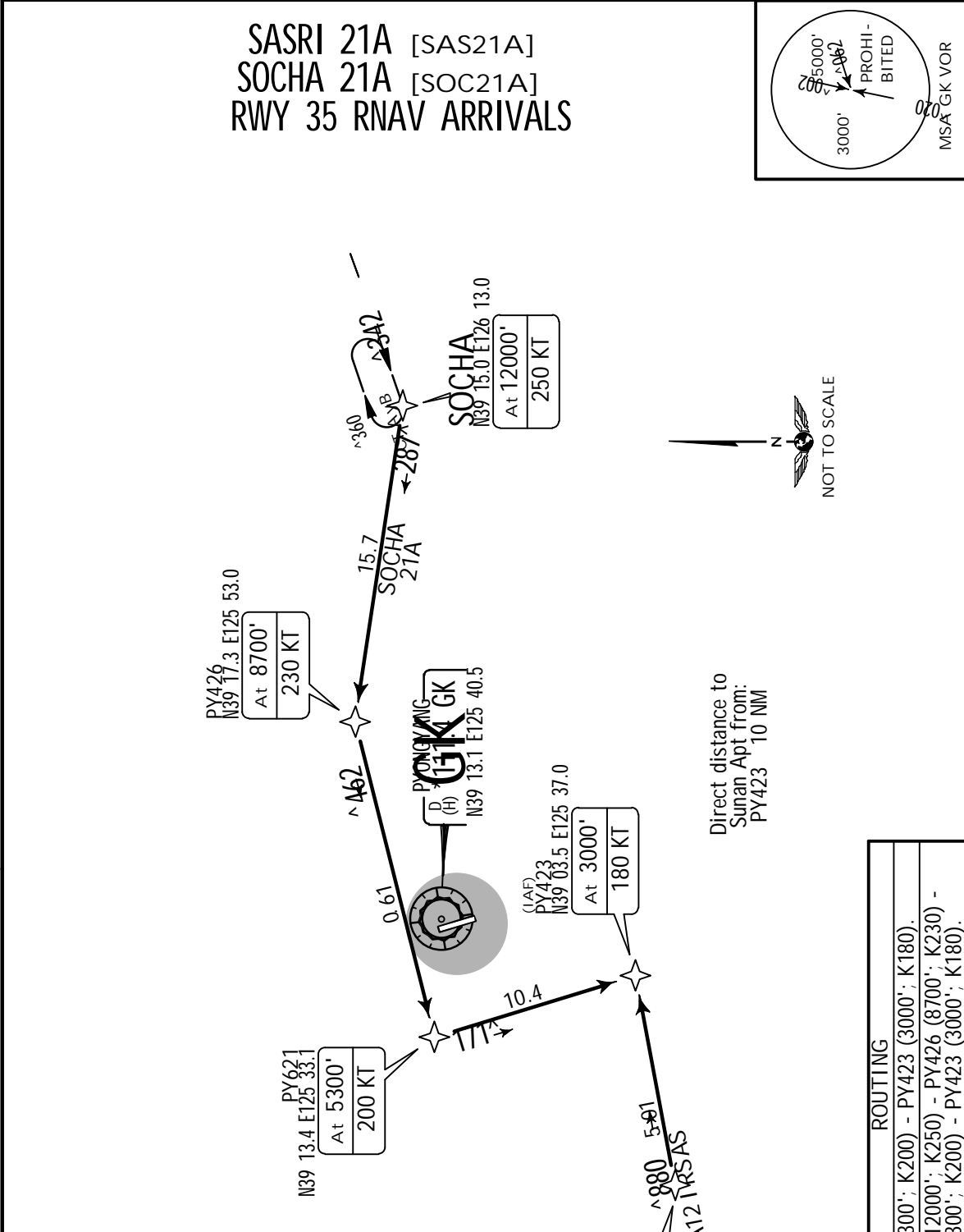
STAR	ROUTING
SASRI 11A	SASRI (7900'; K250) - PY621 (5000'; K230) - PY434 (3600'; K210).
SOCHA 11A	SOCHA (8900'; K250) - PY426 (5600'; K230) - PY433 (3600'; K210).

**ZKPY/FNJ**  
SUNAN



**JEPPESEN PYONGYANG, DPR OF KOREA**  
14 AUG 15 (10-2C) .Eff.20.Aug. .RNAV.STAR.

Alt Set: hPa  
Trans level: FL130 Trans alt: 12000'  
Pilots must obtain approval for RNAV STAR on first contact with ATC and carriage of certified GNSS receiver is mandatory.  
1. RNAV (GNSS). 2. RNP 1.0.



**HOLDING OVER PY621**  
-171°  
MHA 3000  
or By ATC  
351°

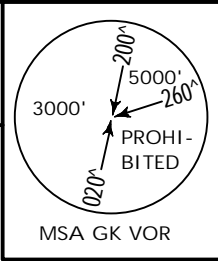
STAR	ROUTING
SASRI 21A	SASRI (5300'; K200) - PY423 (3000'; K180).
SOCHA 21A	SOCHA (12000'; K250) - PY426 (8700'; K230) - PY621 (5300'; K200) - PY423 (3000'; K180).

ZKPY/FNJ  
SUNAN

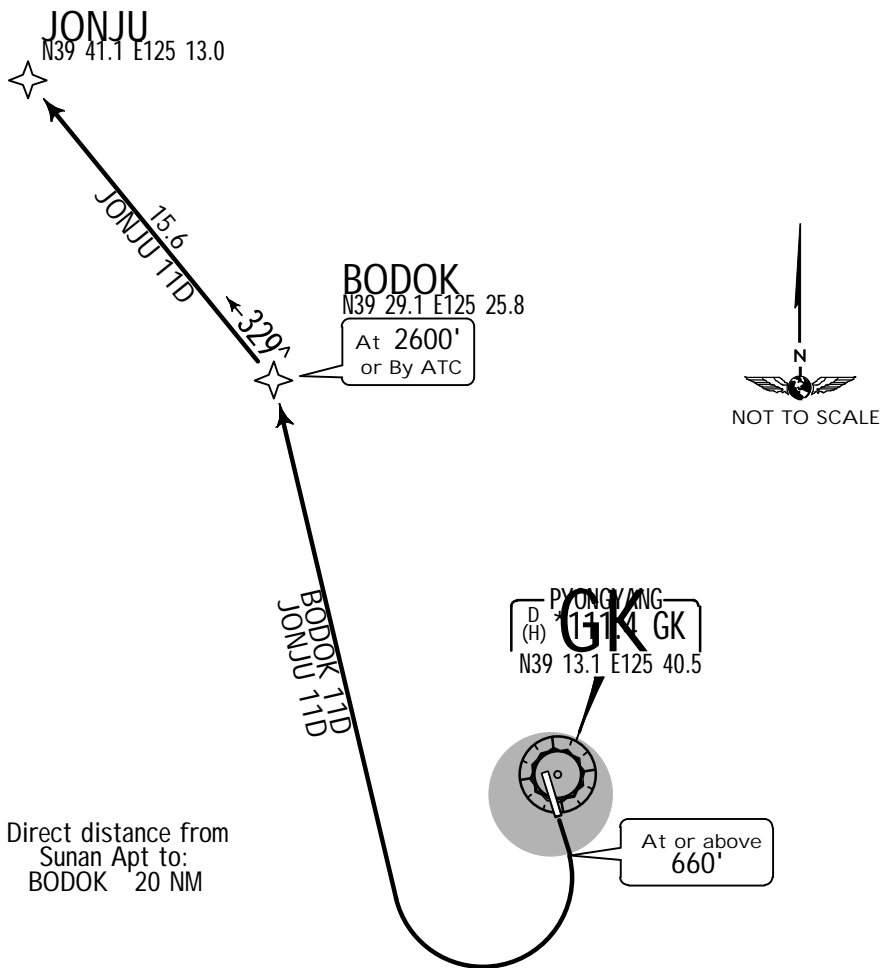
14 AUG 15 **10-3** .Eff.20.Aug.

**JEPESEN** PYONGYANG, DPR OF KOREA  
.RNAV.SID.

Apt Elev 89'  
Trans level: FL130 Trans alt: 12000'  
Pilots must obtain approval for RNAV SID on first contact with ATC and carriage of certified GNSS receiver is mandatory.  
1. RNAV (GNSS). 2. RNP 1.0.



**BODOK 11D [BOD11D]**  
**JONJU 11D [JON11D]**  
**RWY 17 RNAV DEPARTURES**



Direct distance from Sunan Apt to: BODOK 20 NM

These SIDs require a minimum climb gradient of 3.7% up to 960'.

Gnd speed-KT	75	100	150	200	250	300
3.7% V/V (fpm)	281	375	562	749	937	1124

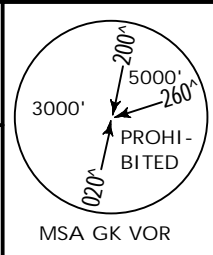
SID	ROUTING
BODOK 11D	Climb straight ahead, at or above 660' turn RIGHT direct to BODOK, or as instructed by ATC.
JONJU 11D	Climb straight ahead, at or above 660' turn RIGHT direct to BODOK, then to JONJU, or as instructed by ATC.

ZKPY/FNJ  
SUNAN

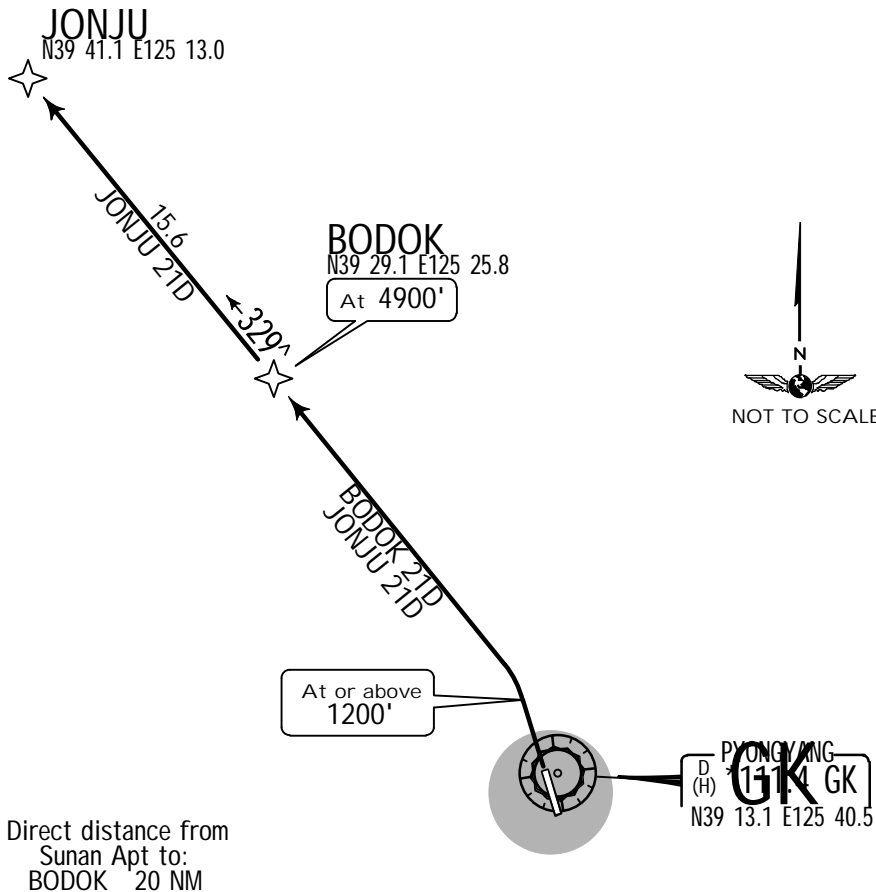
14 AUG 15 (10-3A) .Eff.20.Aug.

JEPESEN PYONGYANG, DPR OF KOREA  
.RNAV.SID.

Apt Elev 89'  
Trans level: FL130 Trans alt: 12000'  
Pilots must obtain approval for RNAV SID on first contact with ATC and carriage of certified GNSS receiver is mandatory.  
1. RNAV (GNSS). 2. RNP 1.0.



**BODOK 21D [BOD21D]**  
**JONJU 21D [JON21D]**  
**RWY 35 RNAV DEPARTURES**



Direct distance from Sunan Apt to: BODOK 20 NM

These SIDs require a minimum climb gradient of 5.5% up to 1330'.

Gnd speed-KT	75	100	150	200	250	300
5.5% V/V (fpm)	418	557	835	1114	1392	1671

SID	ROUTING
BODOK 21D	Climb straight ahead, at or above 1200' turn LEFT direct to BODOK, or as instructed by ATC.
JONJU 21D	Climb straight ahead, at or above 1200' turn LEFT direct to BODOK, then to JONJU, or as instructed by ATC.

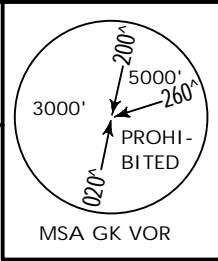


ZKPY/FNJ  
SUNAN

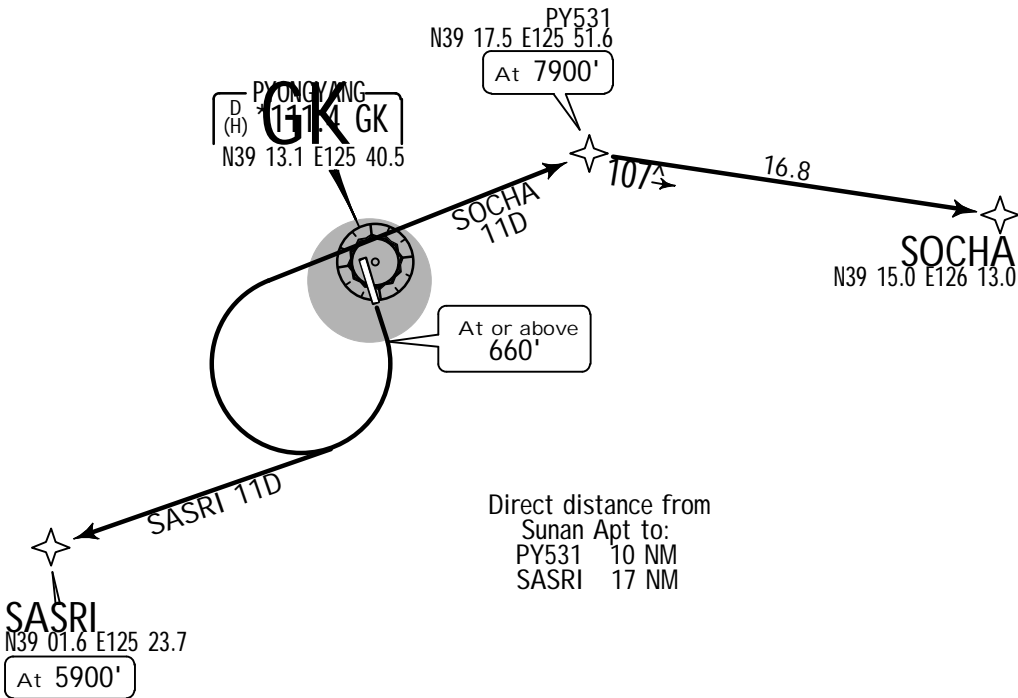
14 AUG 15 (10-3B) .Eff.20.Aug.

JEPPESEN PYONGYANG, DPR OF KOREA  
.RNAV.SID.

Apt Elev 89'  
Trans level: FL130 Trans alt: 12000'  
Pilots must obtain approval for RNAV SID on first contact with ATC and carriage of certified GNSS receiver is mandatory.  
1. RNAV (GNSS). 2. RNP 1.0.



SASRI 11D [SAS11D]  
SOCHA 11D [SOC11D]  
RWY 17 RNAV DEPARTURES



These SIDs require a minimum climb gradient of 3.7% up to 960'.

Gnd speed-KT	75	100	150	200	250	300
3.7% V/V (fpm)	281	375	562	749	937	1124



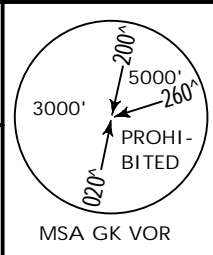
SID	ROUTING
SASRI 11D	Climb straight ahead, at or above 660' turn RIGHT direct to SASRI, or as instructed by ATC.
SOCHA 11D	Climb straight ahead, at or above 660' turn RIGHT direct to PY531, then to SOCHA, or as instructed by ATC.

ZKPY/FNJ  
SUNAN

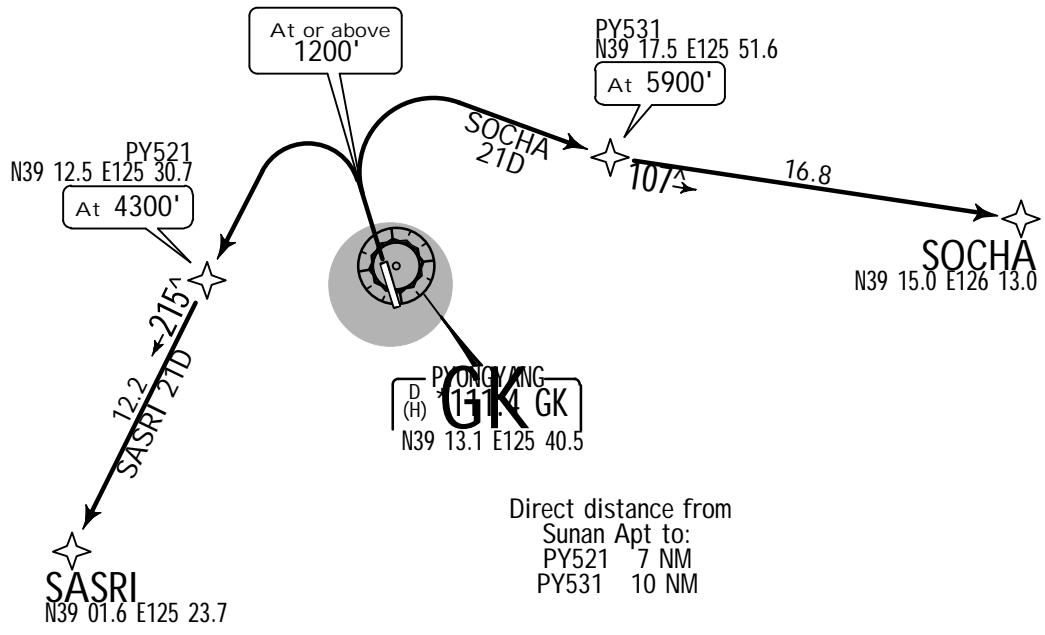
14 AUG 15 (10-3C) .Eff.20.Aug.

JEPPESEN PYONGYANG, DPR OF KOREA  
.RNAV.SID.

Apt Elev 89'  
Trans level: FL130 Trans alt: 12000'  
Pilots must obtain approval for RNAV SID on first contact with ATC and carriage of certified GNSS receiver is mandatory.  
1. RNAV (GNSS). 2. RNP 1.0.



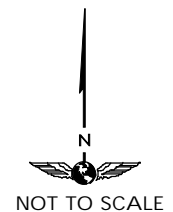
SASRI 21D [SAS21D]  
SOCHA 21D [SOC21D]  
RWY 35 RNAV DEPARTURES



Direct distance from Sunan Apt to:  
PY521 7 NM  
PY531 10 NM

These SIDs require a minimum climb gradient of 5.5% up to 1330'.

Gnd speed-KT	75	100	150	200	250	300
5.5% V/V (fpm)	418	557	835	1114	1392	1671



SID	ROUTING
SASRI 21D	Climb straight ahead, at or above 1200' turn LEFT direct to PY521, then to SASRI, or as instructed by ATC.
SOCHA 21D	Climb straight ahead, at or above 1200' turn RIGHT direct to PY531, then to SOCHA, or as instructed by ATC.

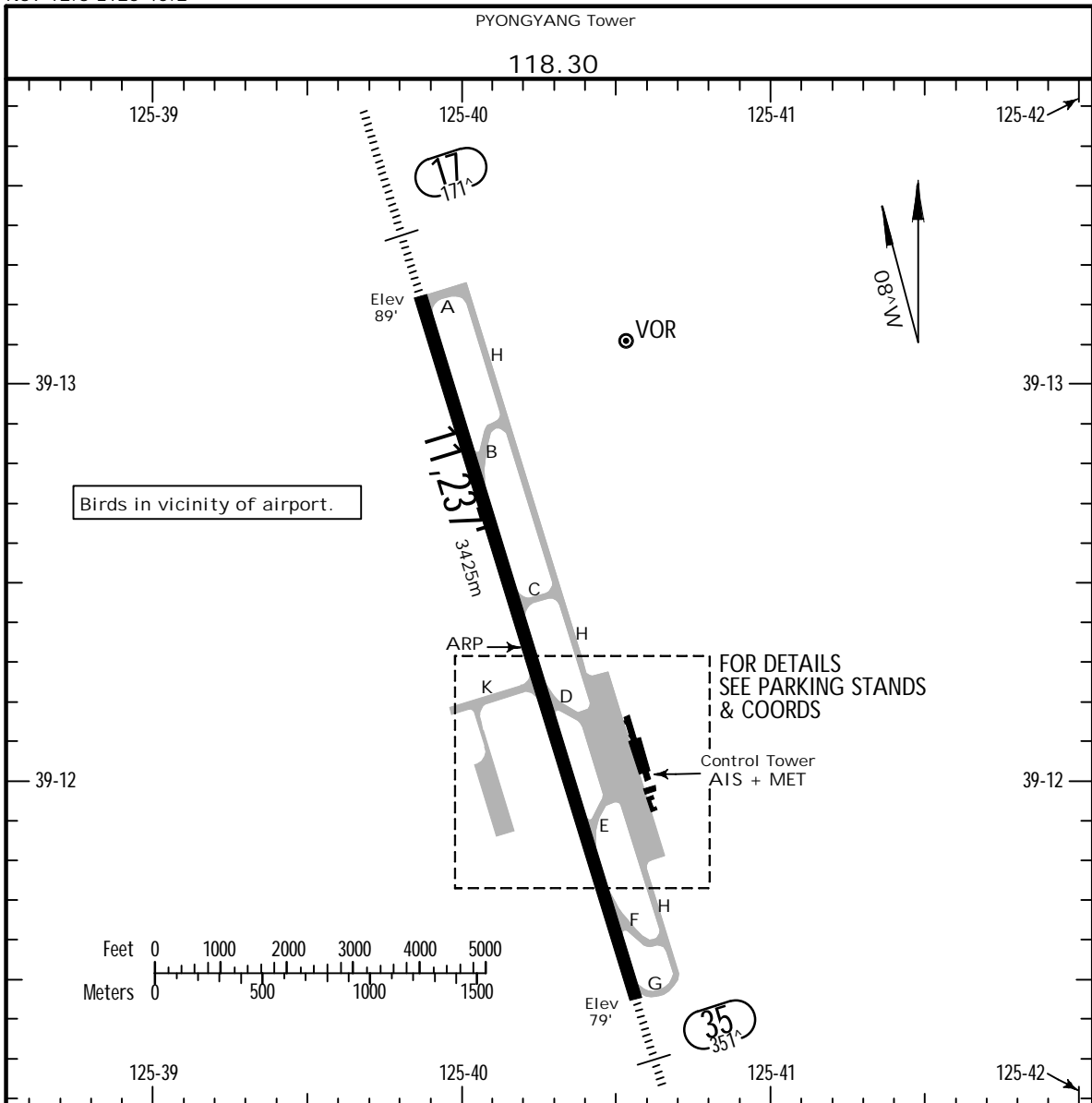
ZKPY/FNJ

Apt Elev 89  
N39 12.3 E125 40.2

JEPPESEN PYONGYANG, DPR OF KOREA

27 JAN 23 (10-9)

SUNAN



ADDITIONAL RUNWAY INFORMATION

RWY	HIRL (60m)	1	HIALS	SFL	PAPI-L(3.0^)	HST-D&F	USABLE LENGTHS			WIDTH
							Threshold	Glide Slope	TAKE-OFF	
17								10,122' 3085m		197'
35								9961' 3036m		60m

1 CL (30m spacing)

NOISE ABATEMENT PROCEDURES

Rwy 17 is used for preferential Rwy for noise abatement for take-off and Rwy 35 for landing.  
 RUN-UP TESTS: Ground running of acft engines for test or maintenance is subject to ATC approval.

TAKE-OFF

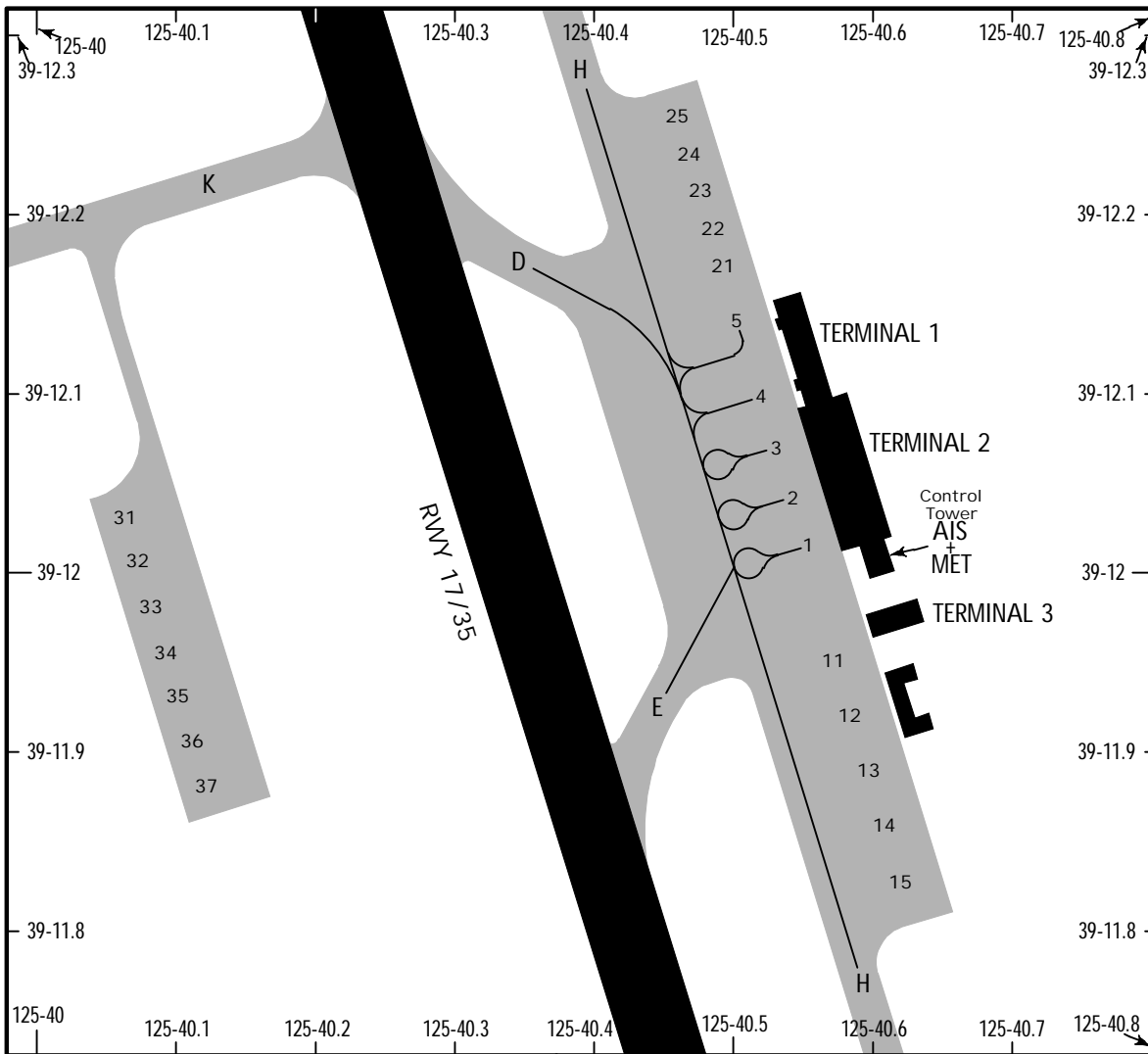
	AIR CARRIER (JAA) All Rwys		
	LVP must be in force		
	RL & CL	RCLM (DAY only) or RL	RCLM (DAY only) or RL
A			
B	200m	250m	400m
C			
D	250m	300m	

ZKPY/FNJ

**JEPPESEN** PYONGYANG, DPR OF KOREA

27 JAN 23 (10-9A)

SUNAN



**INS COORDINATES**

STAND No.	COORDINATES
1	N39 12.0 E125 40.6
2	N39 12.0 E125 40.5
3 thru 5	N39 12.1 E125 40.5
11 thru 13	N39 11.9 E125 40.6
14, 15	N39 11.8 E125 40.6
21 thru 25	N39 12.2 E125 40.5
31 thru 33	N39 12.0 E125 40.1
34 thru 37	N39 11.9 E125 40.1

ZKPY/FNJ

23 AUG 19



PYONGYANG, DPR OF KOREA

Standard  
SUNAN

STRAIGHT-IN RWY		A	B	C	D
17	ILS FULL ALS out	289' (200') R550m 1 R1200m	289' (200') R550m 1 R1200m	289' (200') R550m 1 R1200m	289' (200') R550m 1 R1200m
	LOC 2 ALS out	690' (601') R1500m	690' (601') R1500m	690' (601') R2100m R2400m	690' (601') R2100m R2400m
	RNP (LNAV/VNAV) ALS out	640' (551') R1500m	640' (551') R1500m	640' (551') R1800m R2400m	640' (551') R1800m R2400m
	RNP (LNAV) 2 ALS out	690' (601') R1500m	690' (601') R1500m	690' (601') R2100m R2400m	690' (601') R2100m R2400m
	35	ILS FULL ALS out	299' (220') R800m R1200m	309' (230') R800m R1200m	319' (240') R800m R1200m
35	LOC 2 ALS out	610' (531') R1500m	610' (531') R1500m	610' (531') R2000m R2400m	610' (531') R2000m R2400m
	RNP (LNAV/VNAV) ALS out	580' (501') R1500m	580' (501') R1500m	580' (501') R1900m R2400m	580' (501') R1900m R2400m
	RNP (LNAV) 2 ALS out	640' (561') R1500m	640' (561') R1500m	640' (561') R2200m R2400m	640' (561') R2200m R2400m

- 1 RVR 750m when a Flight Director or Autopilot or HUD to DA is not used.
- 2 Continuous Descent Final Approach.

CIRCLE-TO-LAND 3	100 KT	135 KT	180 KT	205 KT
After ILS & LOC	1380' (1291')	1380' (1291')	1380' (1291')	1380' (1291')
After RNP	970' (881') V1500m	970' (881') V1600m	970' (881') V2400m	970' (881') V3600m

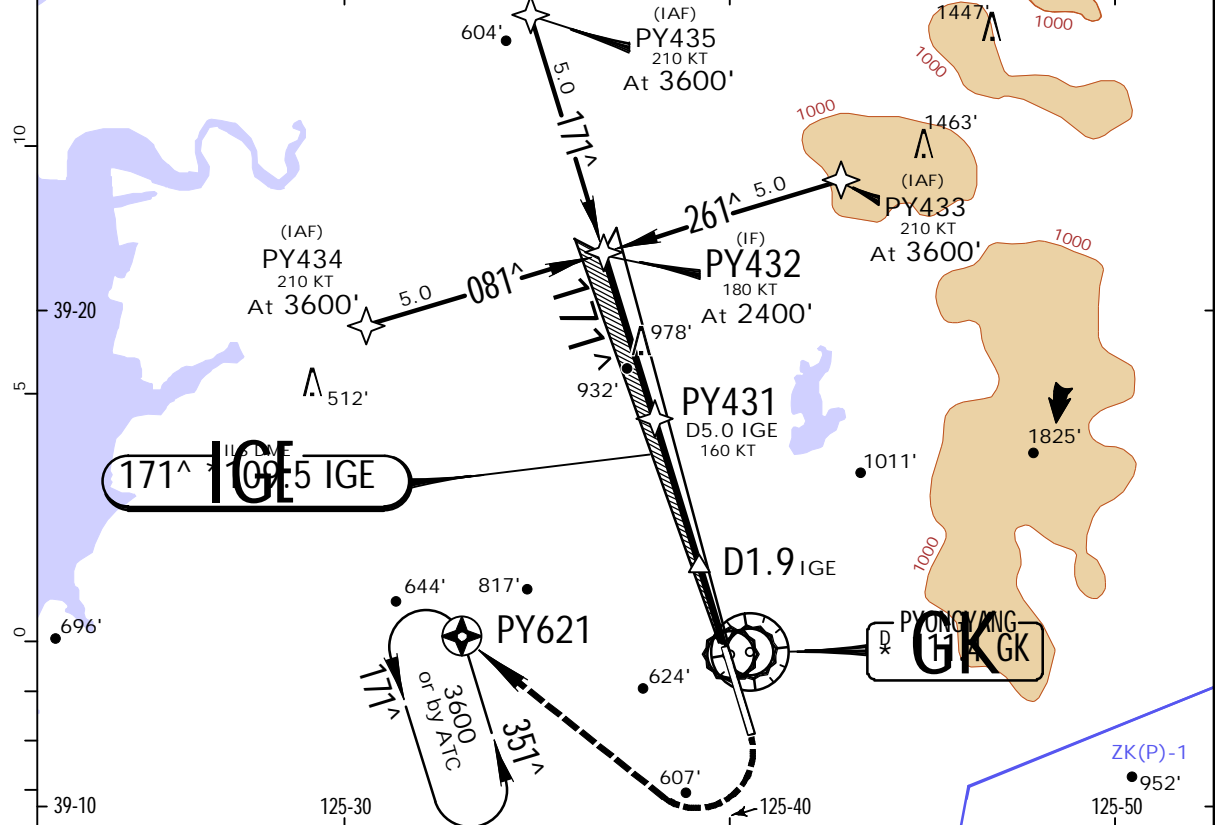
3 Not authorised East of rwy.

TAKE-OFF					
Low Visibility Take-off					
	RL, CL & relevant RVR	RL & CL	Day: RL & RCLM Night: RL or CL	Day: RL or RCLM Night: RL or CL	Adequate vis ref (Day only)
A					
B	TDZ, MID, RO				
C	R150m	R200m	R300m	400m	500m
D					

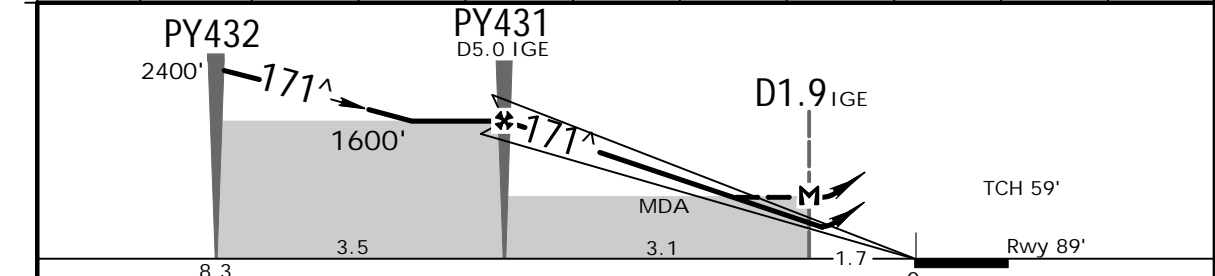
ZKPY/FNJ  
SUNAN

JEPPESEN PYONGYANG, DPR OF KOREA  
14 AUG 15 (11-1) .Eff.20.Aug.  
ILS DME Rwy 17

PYONGYANG Approach 133.90		PYONGYANG Tower 118.30			<p>3000' 200' 500' 260' PROHIBITED</p>
LOC IGE *109.5	Final Apch Crs 171^	GS PY431 1600' (1511')	ILS DA(H) 289' (200')	Apt Elev 89' Rwy 89'	
MISSED APCH: Climb on 171^ to 770', then turn RIGHT direct to PY621, climbing to 3600', or as directed.					MSA GK VOR
Alt Set: hPa		Rwy Elev: 3 hPa		Trans level: FL 130	
				Trans alt: 12000'	



LOC (GS out)	IGE DME	8.0	7.0	6.0	5.0	4.0	3.0	2.0	1.0	0.0
	ALTITUDE	2640'	2320'	2000'	1690'	1370'	1050'	730'	410'	150'



Gnd speed-Kts	70	90	100	120	140	160	HIALS PAPI	770'	PY621 at 3600'
ILS GS or LOC Descent Angle	372	478	531	637	743	849		↑	RT
MAP at D1.9 IGE									

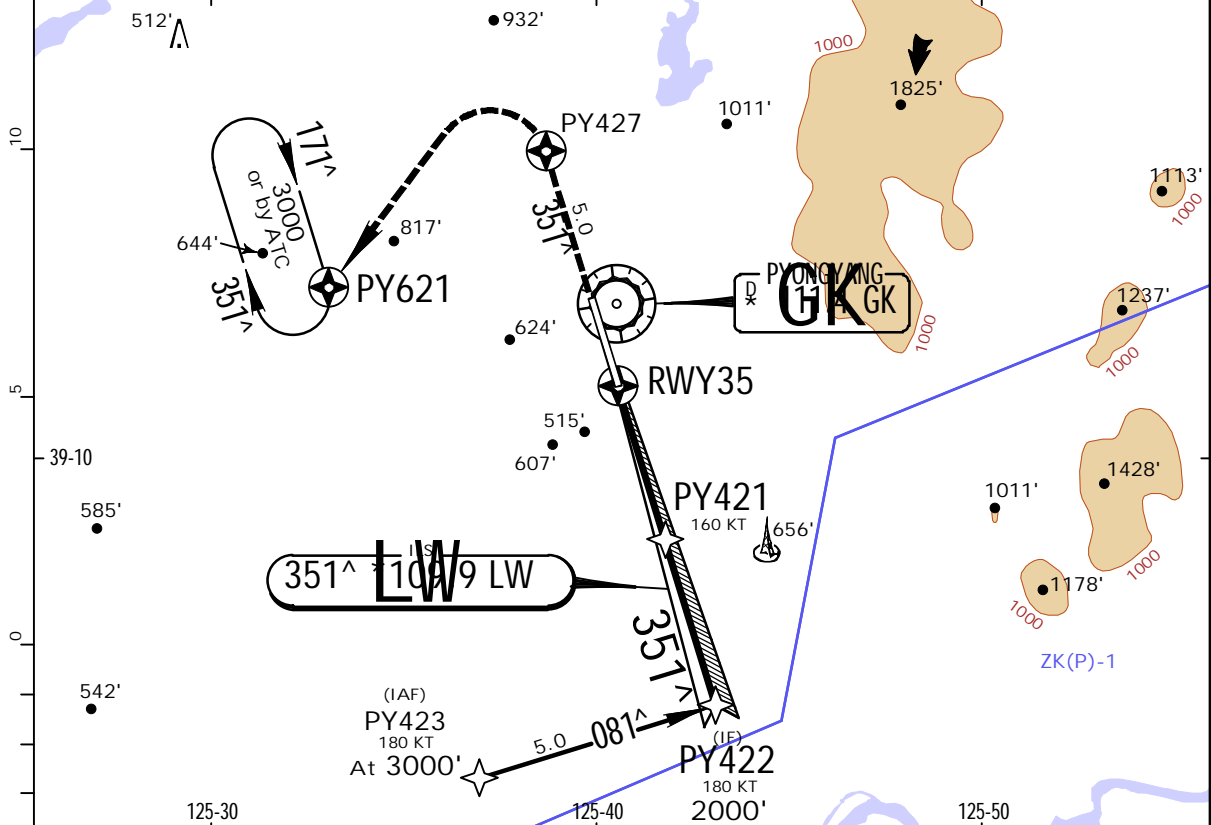
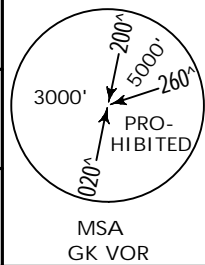
STRAIGHT-IN LANDING RWY 17				CIRCLE-TO-LAND Not authorised East of rwy	
ILS DA(H) 289' (200')		LOC (GS out) MDA(H) 690' (601')		Max Kts	
FULL	ALS out	FULL	ALS out	100	1380' (1291') 2000m 1
A	800m	1200m	2300m	3100m	135
					1380' (1291') 2400m 1
B	800m	1200m	2300m	3100m	180
1380' (1291') 4800m					
C	800m	1200m	2300m	3100m	205
1380' (1291') 4800m					
D	800m	1200m	2300m	3100m	205
1380' (1291') 4800m					

1 After LOC (GS out) apch: VIS 3100m.  
 CHANGES: Arrival. Missed apch. JEPPESEN, 2015. ALL RIGHTS RESERVED.

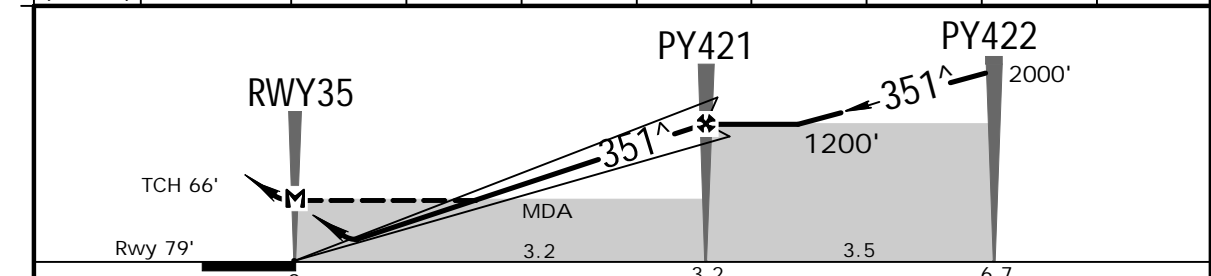
ZKPY/FNJ  
SUNAN

JEPPESEN PYONGYANG, DPR OF KOREA  
14 AUG 15 (11-2) .Eff.20.Aug.  
ILS Rwy 35

PYONGYANG Approach		PYONGYANG Tower		
133.90		118.30		
LOC LW <b>*109.9</b>	Final Apch Crs <b>351<sup>^</sup></b>	GS PY421 <b>1200'</b> (1121')	ILS DA(H) Refer to Minimums	Apt Elev 89' Rwy 79'
MISSED APCH: Climb to PY427, then turn LEFT direct to PY621 at 3000', or as directed.				
Alt Set: hPa		Rwy Elev: 3 hPa		Trans level: FL 130
				Trans alt: 12000'



LOC (GS out)	DIST to RWY35	0.0	1.0	2.0	3.0	4.0	5.0	6.0	7.0
	ALTITUDE	150'	470'	790'	1110'	1430'	1740'	2060'	2380'



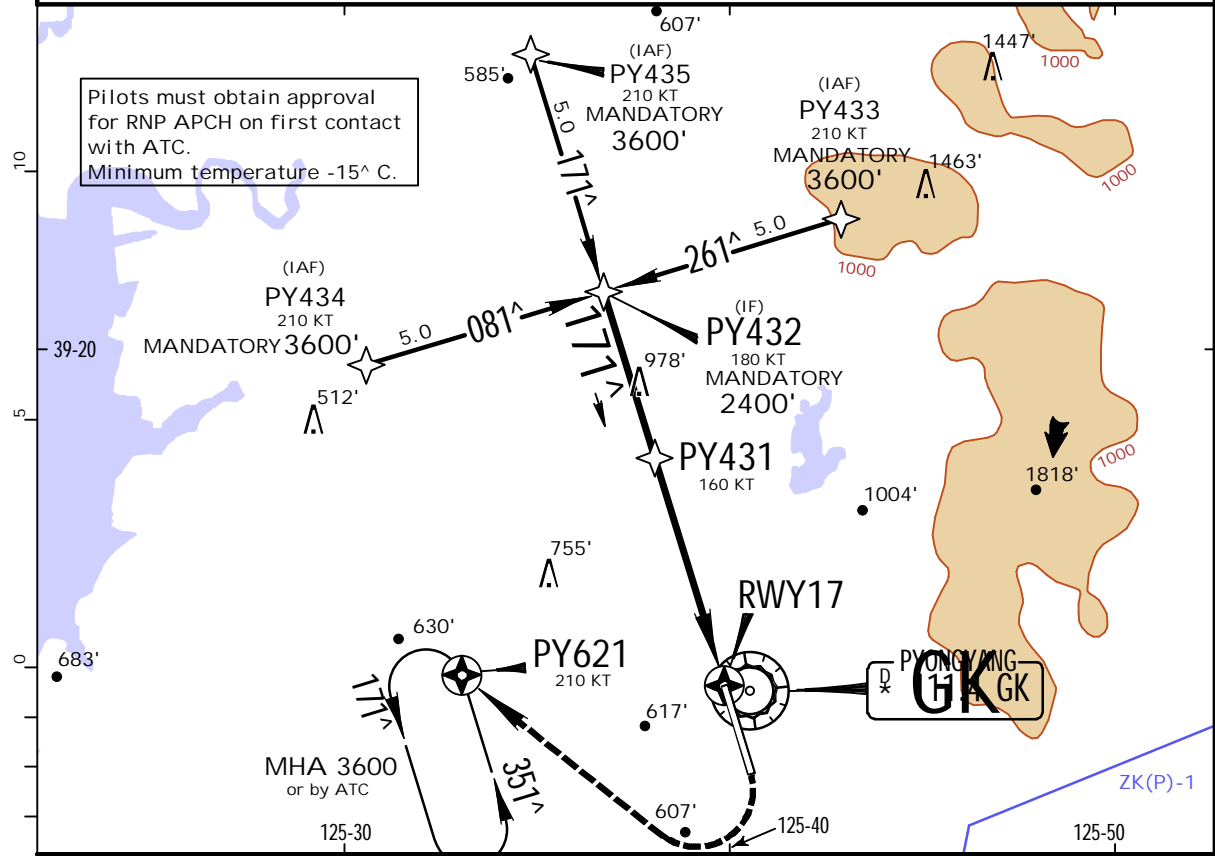
Gnd speed-Kts	70	90	100	120	140	160			
ILS GS or	372	478	531	637	743	849			
LOC Descent Angle	3.00 <sup>^</sup>								
MAP at RWY35									

ILS STRAIGHT-IN LANDING RWY 35				CIRCLE-TO-LAND Not authorised East of rwy		
DA(H)	A: 299' (220')	C: 319' (240')	LOC (GS out)	MDA(H)	610' (531')	
	B: 309' (230')	D: 329' (250')				
	FULL		ALS out		ALS out	
A	1200m				Max Kts	
B			1200m	1600m	100	1380' (1291') 2000m
C					135	1380' (1291') 2400m
D					180	1380' (1291') 4800m
					205	

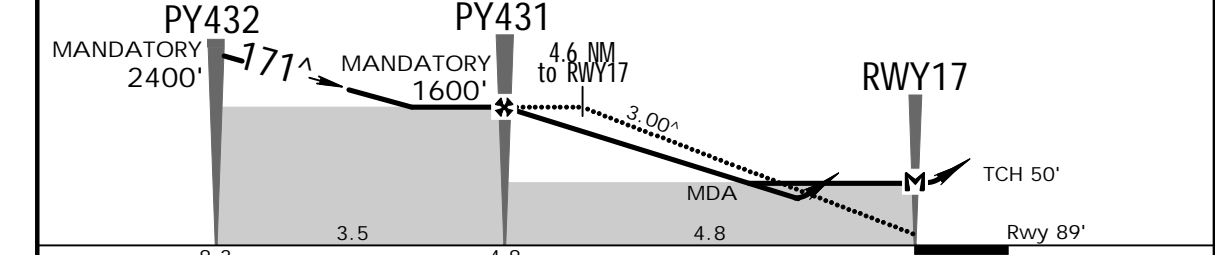
ZKPY/FNJ  
SUNAN

**JEPPESEN** PYONGYANG, DPR OF KOREA  
RNP Rwy 17  
23 AUG 19 (12-1)

PYONGYANG Approach		PYONGYANG Tower			
133.90		118.30			
RNAV	Final Apch Crs 171 <sup>^</sup>	Mandatory Alt PY431 1600' (1511')	LNAV/VNAV DA(H) 640' (551')	Apt Elev 89' Rwy 89'	
MISSED APCH: Turn RIGHT direct to PY621 climbing to 3600', or as directed. MAX 185 KT.					MSA GK VOR
Alt Set: hPa		Rwy Elev: 3 hPa	Trans level: FL 130		Trans alt: 12000'



DIST to RWY17	8.0	7.0	6.0	5.0	4.0	3.0	2.0	1.0	0.0
ALTITUDE	2690'	2370'	2050'	1730'	1420'	1100'	780'	460'	140'



Gnd speed-Kts	70	90	100	120	140	160	HIALS PAPI 185 KT MAX PY621 at 3600' RT
Descent Angle	3.00 <sup>^</sup>	372	478	531	637	849	
MAP at RWY17							

STRAIGHT-IN LANDING RWY 17				CIRCLE-TO-LAND Not authorised East of rwy	
LNAV/VNAV DA(H) 640' (551')		LNAV MDA(H) 690' (601')		Max Kts	MDA(H)
	ALS out		ALS out	100	970' (881') 2000m
A	800m	1600m	800m	135	970' (881') 4400m
B	1600m	2400m	2000m	180	970' (881') 4800m
C	2000m	2800m	2400m	205	
D					

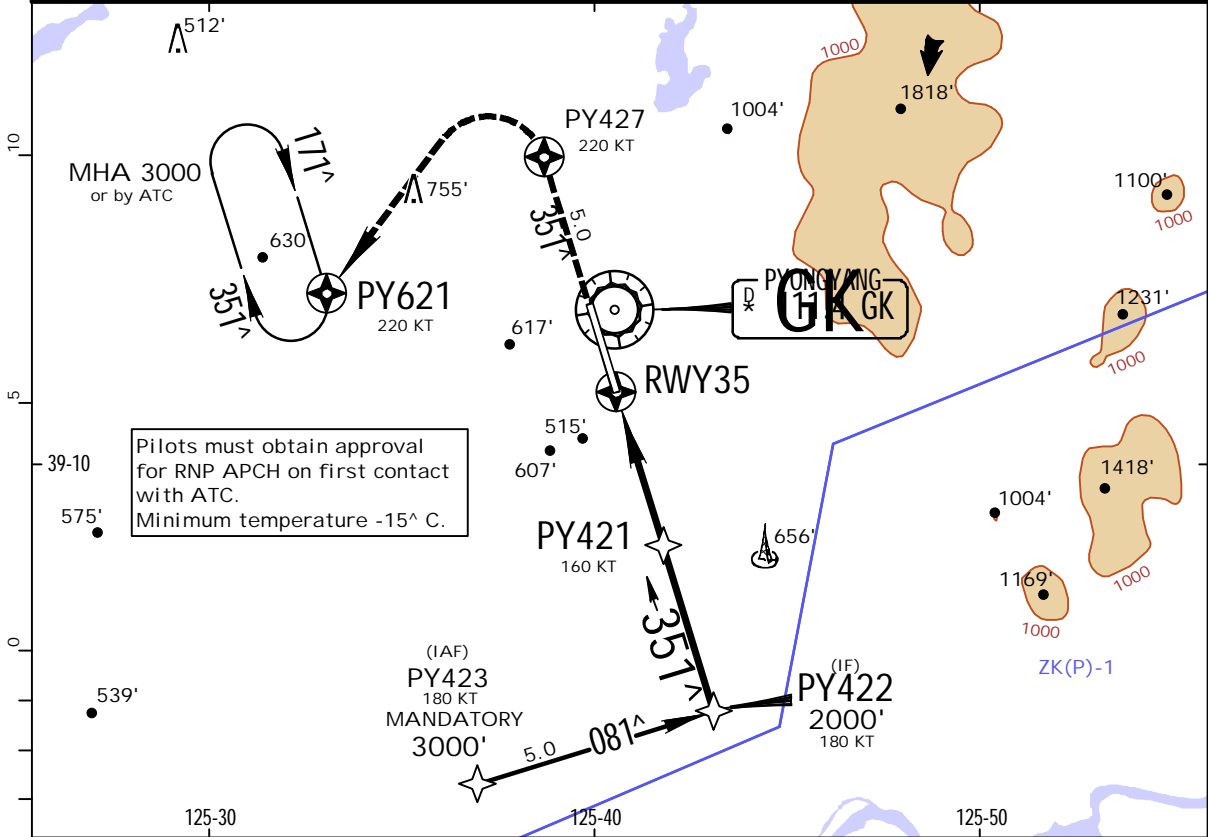


ZKPY/FNJ  
SUNAN

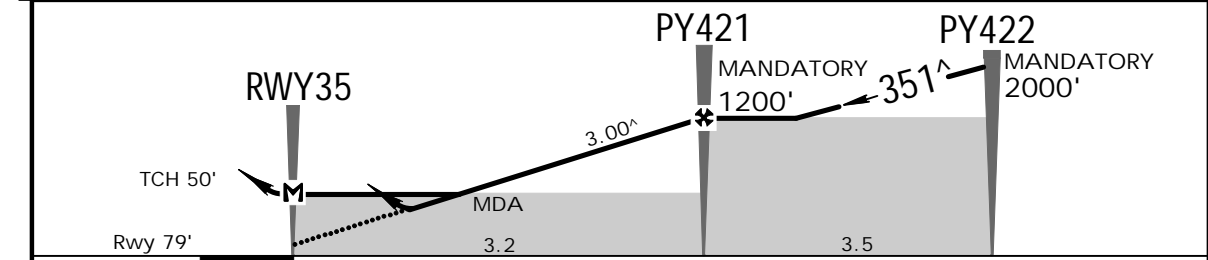
JEPPESEN PYONGYANG, DPR OF KOREA  
RNP Rwy 35

23 AUG 19 (12-2)

PYONGYANG Approach 133.90			PYONGYANG Tower 118.30		
RNAV	Final Apch Crs 351 <sup>^</sup>	Mandatory Alt PY421 1200' (1121')	LNAV/VNAV DA(H) 580' (501')	Apt Elev 89' Rwy 79'	
MISSED APCH: Climb to PY427, then turn LEFT direct to PY621 at 3000', or as directed. MAX 185 KT.					
Alt Set: hPa		Rwy Elev: 3 hPa	Trans level: FL 130		Trans alt: 12000'



DIST to RWY35	0.0	1.0	2.0	3.0	4.0	5.0	6.0	7.0
ALTITUDE	130'	450'	770'	1090'	1410'	1720'	2040'	2360'



Gnd speed-Kts	70	90	100	120	140	160	HIALS PAPI 185 KT MAX	PY427 ↑	PY621 ← at 3000'
Descent Angle	3.00 <sup>^</sup>	372	478	531	637	849			
MAP at RWY35									

STRAIGHT-IN LANDING RWY 35				CIRCLE-TO-LAND Not authorised East of rwy	
LNAV/VNAV DA(H) 580' (501')		LNAV MDA(H) 640' (561')		MDA(H)	
ALS out		ALS out		Max Kts	
A	1200m	1600m	1200m	100	970' (881') 2000m
B				135	
C	2400m		2400m	180	970' (881') 4400m
D	2400m		2800m	205	970' (881') 4800m

## Chart changes since cycle 06-2023

ADD = added chart, REV = revised chart, DEL = deleted chart.

ACT    PROCEDURE IDENT

INDEX

REV DATE

EFF DATE

**PYONGYANG, (SUNAN - ZKPY)**

## TERMINAL CHART CHANGE NOTICES

No Chart Change Notices for Airport ZKPY