

List of pages in this Trip Kit

Trip Kit Index

Airport Information For ZJSY

Terminal Charts For ZJSY

Revision Letter For Cycle 07-2023

Change Notices

Notebook

General Information

Location: SANYA CHN
ICAO/IATA: ZJSY / SYX
Lat/Long: N18° 18.10', E109° 24.80'
Elevation: 94 ft

Airport Use: Public
Daylight Savings: Not Observed
UTC Conversion: -8:00 = UTC
Magnetic Variation: 1.0° W

Fuel Types: Jet A-1
Repair Types: Minor Airframe, Minor Engine
Customs: Yes
Airport Type: IFR
Landing Fee: Yes
Control Tower: Yes
Jet Start Unit: No
LLWS Alert: No
Beacon: No

Sunrise: 2226 Z
Sunset: 1059 Z

Runway Information

Runway: 08
Length x Width: 11155 ft x 148 ft
Surface Type: concrete
TDZ-Elev: 61 ft
Lighting: Edge, ALS, Centerline
Stopway: 197 ft

Runway: 26
Length x Width: 11155 ft x 148 ft
Surface Type: concrete
TDZ-Elev: 94 ft
Lighting: Edge, ALS, Centerline
Stopway: 197 ft

Communication Information

ATIS: 126.450
ATIS: 131.450

Fenghuang Tower: 118.150

Fenghuang Tower: 118.850 Secondary

Fenghuang Ground: 121.700

Fenghuang Apron Ramp/Taxi: 121.600

Sanya Approach: 127.925

Sanya Approach: 125.550

Sanya Approach: 119.250 Secondary

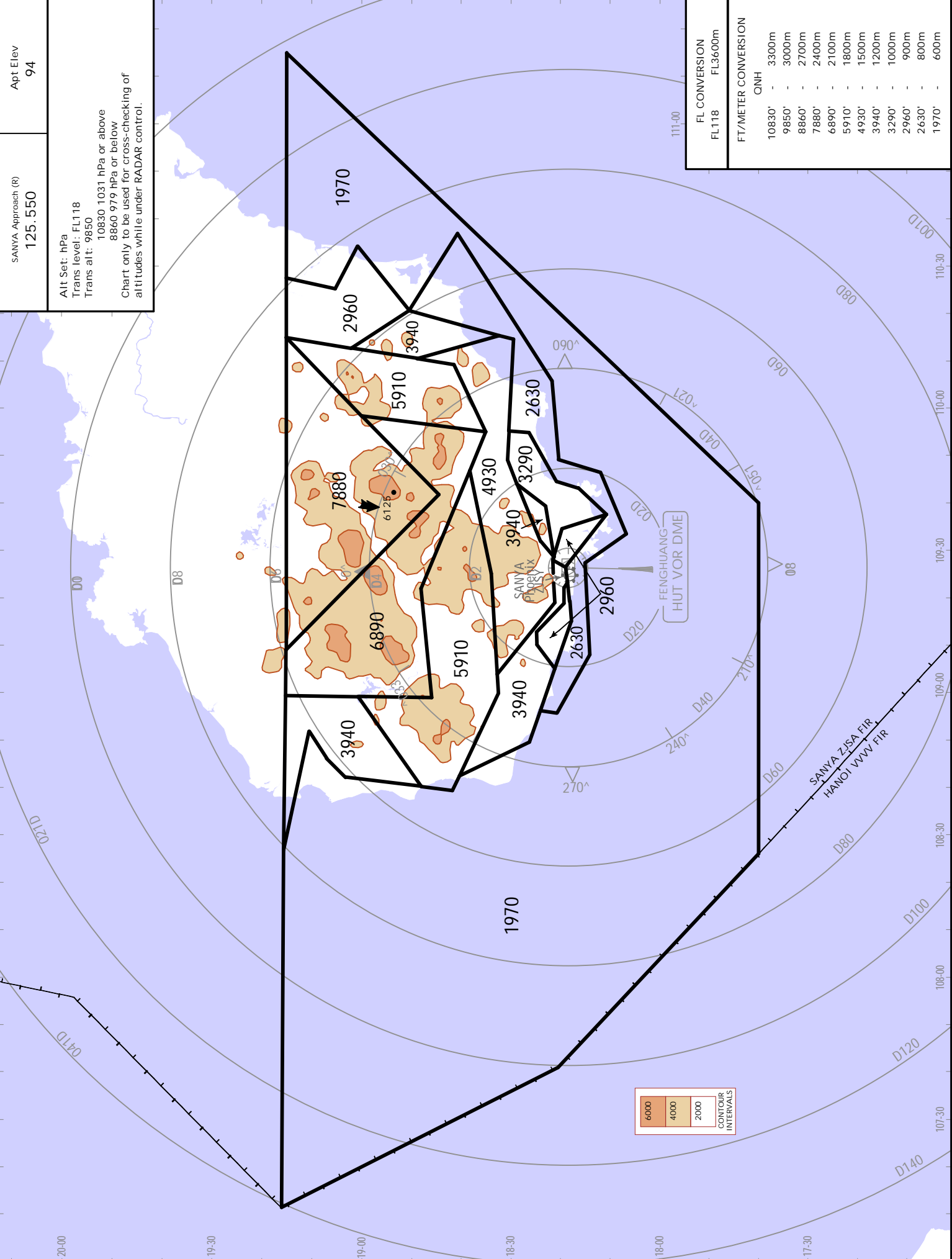
SANYA, PR OF CHINA
.RADAR.MINIMUM.ALTITUDES.

SANYA Approach (R)
125.550
 Apt Elev
94

Alt Set: hPa
 Trans level: FL118
 Trans alt: 9850
 10830 1031 hPa or above
 8860 979 hPa or below
 Chart only to be used for cross-checking of altitudes while under RADAR control.

FL CONVERSION	
FL118	FL3600m
10830'	3300m
9850'	3000m
8860'	2700m
7880'	2400m
6890'	2100m
5910'	1800m
4930'	1500m
3940'	1200m
3290'	1000m
2960'	900m
2630'	800m
1970'	600m

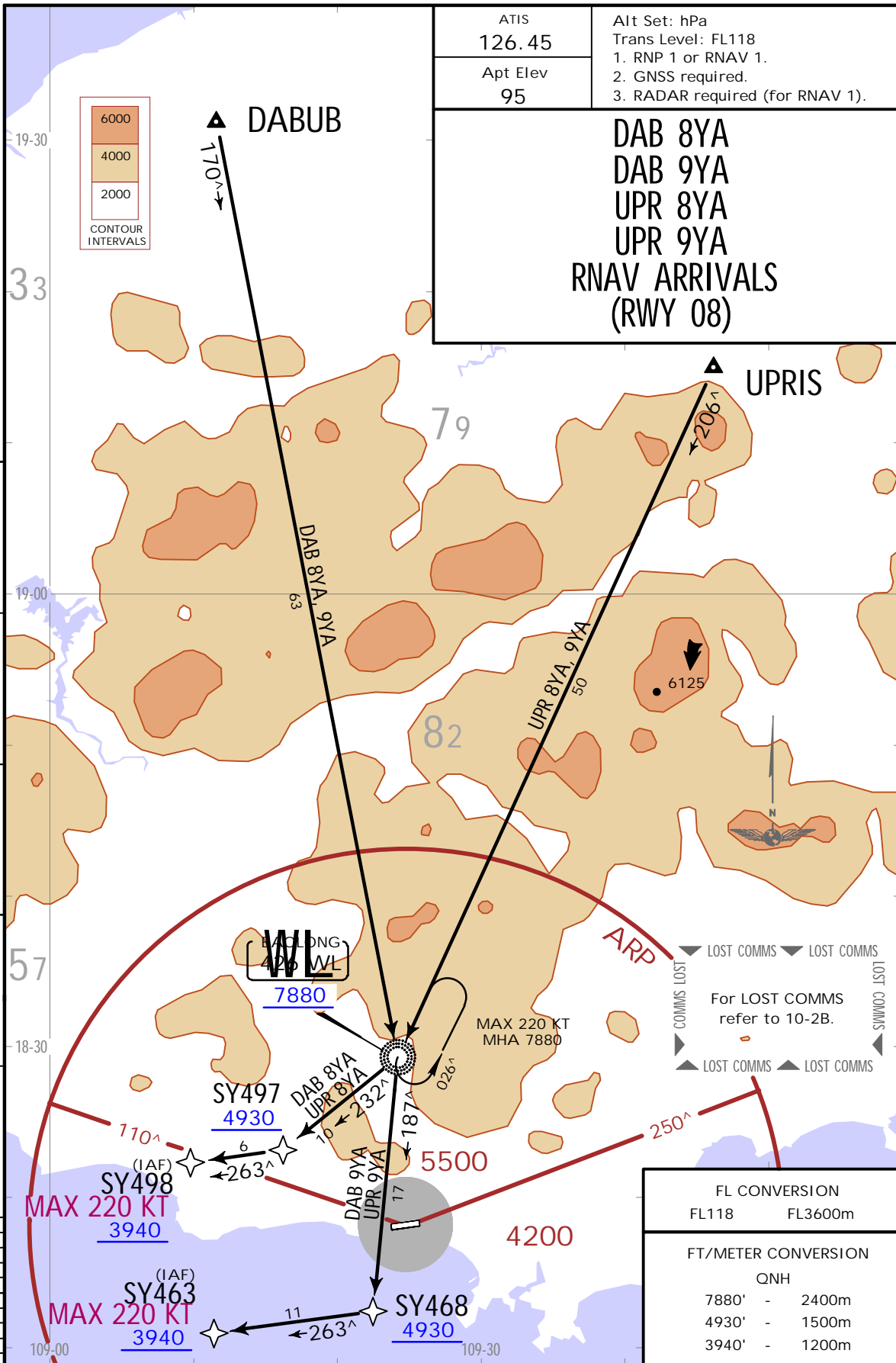
FT/METER CONVERSION	
QNH	
10830'	3300m
9850'	3000m
8860'	2700m
7880'	2400m
6890'	2100m
5910'	1800m
4930'	1500m
3940'	1200m
3290'	1000m
2960'	900m
2630'	800m
1970'	600m



ZJSY/SYX
PHOENIX

JEPPESEN
22 JAN 21 (10-2) .Eff.27.Jan.1600Z.

SANYA, PR OF CHINA
.RNAV.STAR.



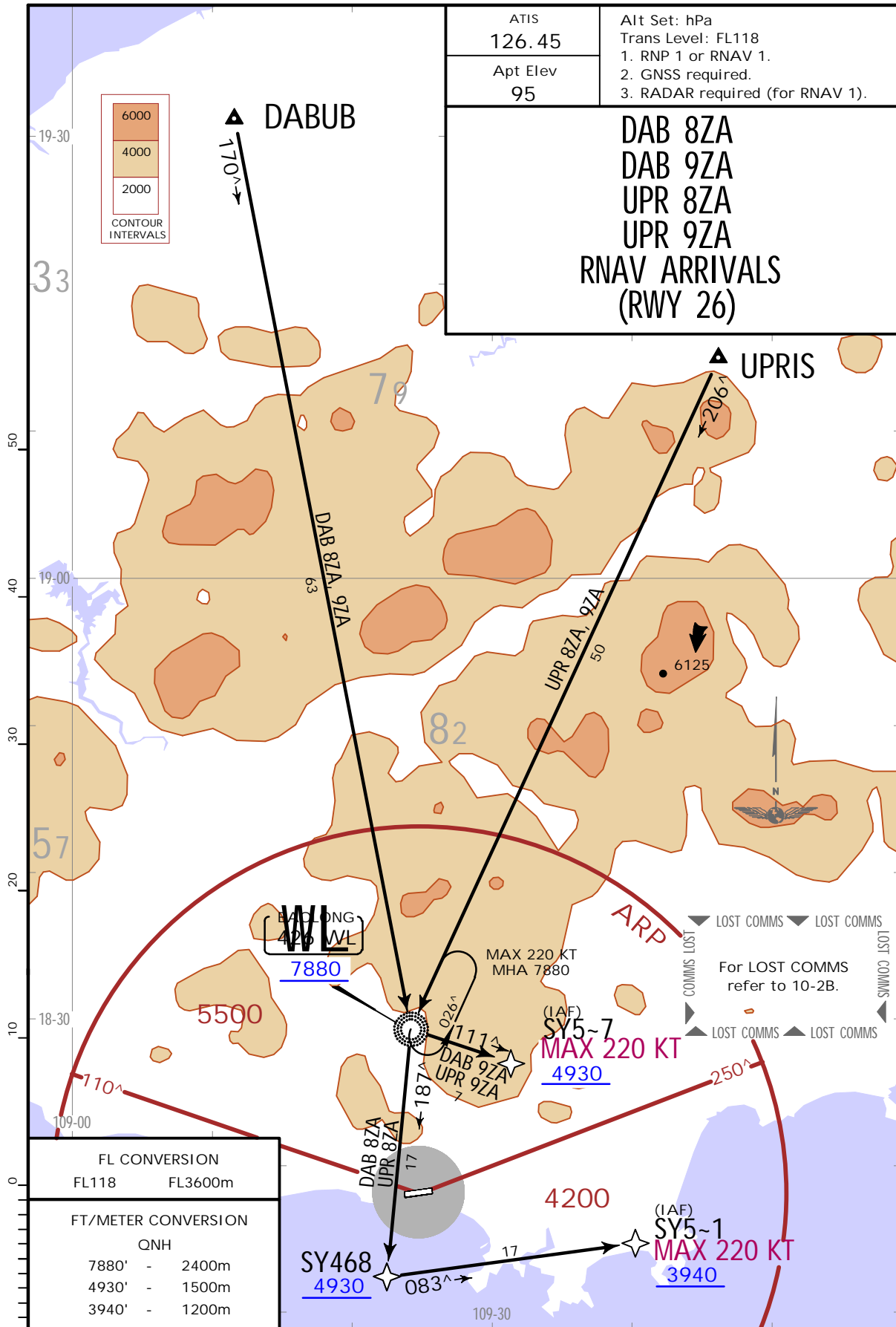
ZJSY/SYX
PHOENIX

JEPPESEN
22 JAN 21 (10-2A)

SANYA, PR OF CHINA
.RNAV.STAR.

ATIS 126.45	Alt Set: hPa Trans Level: FL118 1. RNP 1 or RNAV 1. 2. GNSS required. 3. RADAR required (for RNAV 1).
Apt Elev 95	

DAB 8ZA
DAB 9ZA
UPR 8ZA
UPR 9ZA
RNAV ARRIVALS
(RWY 26)



FL CONVERSION	
FL118	FL3600m
FT/METER CONVERSION	
QNH	
7880'	2400m
4930'	1500m
3940'	1200m

STAR	ROUTING
DAB 8ZA By ATC	DABUB - WL (7880+) - SY468 (4930+) - SY5-1 (K220-; 3940+).
DAB 9ZA By ATC	DABUB - WL (7880+) - SY5-7 (K220-; 4930+).
UPR 8ZA By ATC	UPRIS - WL (7880+) - SY468 (4930+) - SY5-1 (K220-; 3940+).
UPR 9ZA	UPRIS - WL (7880+) - SY5-7 (K220-; 4930+).

ZJSY/SYX
PHOENIX

JEPPESEN

SANYA, PR OF CHINA
.RNAV.STAR.

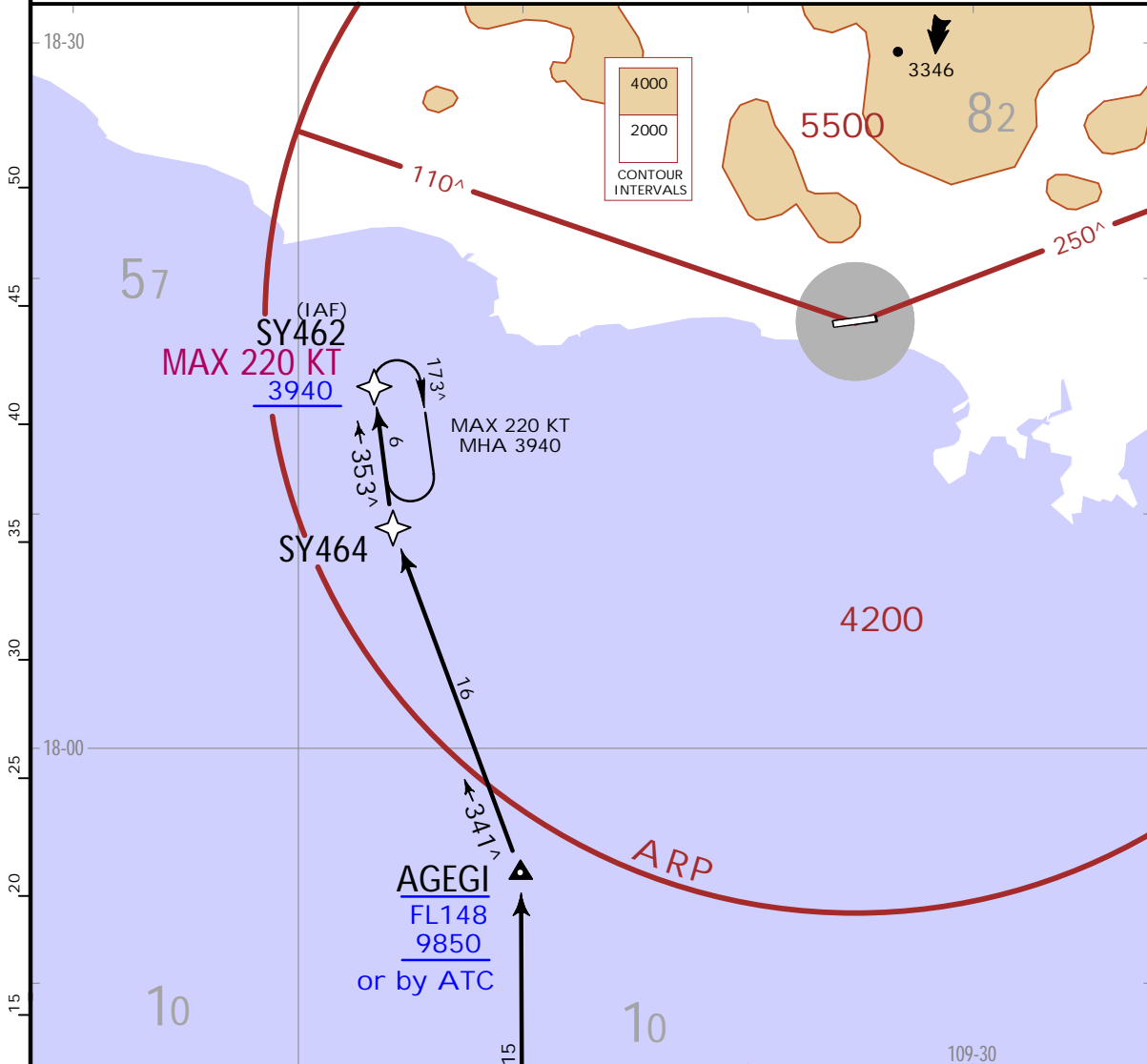
22 JAN 21

(10-2B)

.Eff.27.Jan.1600Z.

ATIS 126.45	Apt Elev 95	Alt Set: hPa Trans Level: FL118 1. RNP 1 or RNAV 1. 2. GNSS required. 3. RADAR required (for RNAV 1).
----------------	----------------	---

KAG 9YA
RNAV ARRIVAL
(RWY 08)



FL CONVERSION	
FL148	FL4500m
FL118	FL3600m
FT/METER CONVERSION	
QNH	
9850'	- 3000m
3940'	- 1200m

- LOST COMMS ▼ LOST COMMS ▼ LOST COMMS ▼ LOST COMMS
- 1. Aircraft Communication Failure:**
Continue to land with following specific approach procedure as soon as possible, if condition of airport is not suitable for landing, the flight crew should decide to return or alternate by themselves.
 - 2. Landing to EAST (RWY 08):**
Fly to SYX according last cleared altitude, join holding, descend, land according IAPs ILS DME Y RWY 08 or VOR DME RWY 08.
 - 3. Landing to WEST (RWY 26):**
Fly to HUT according last cleared altitude, join holding, descend, land according IAPs ILS DME Y RWY 26 or VOR DME RWY 26.
- COMMS ▲ LOST COMMS ▲ LOST COMMS ▲ LOST COMMS ▲

ROUTING
KAGUK - AGEGI (FL148-; 9850+ or by ATC) - SY464 - SY462 (K220-; 3940+).

ZJSY/SYX
PHOENIX

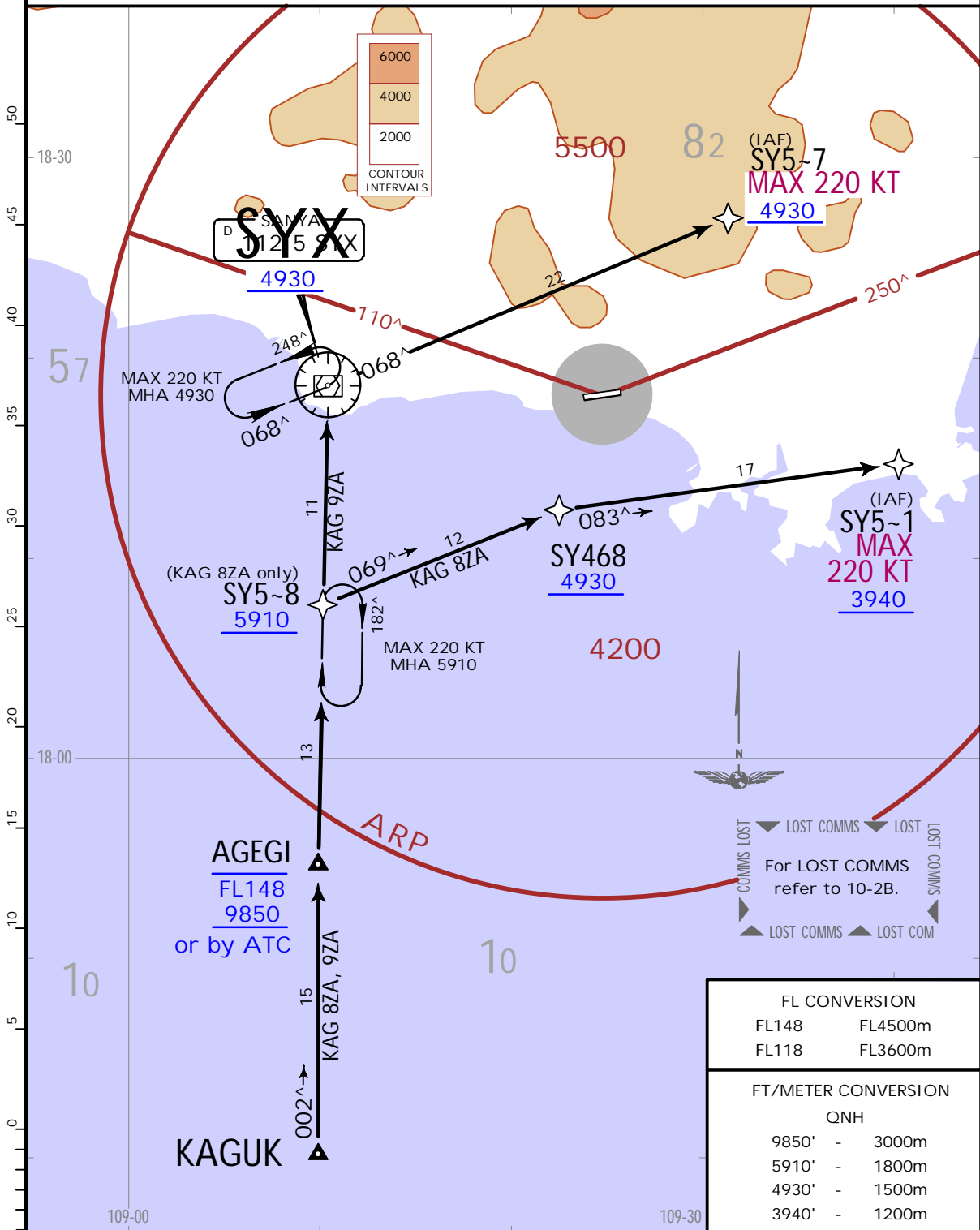
JEPPESEN

SANYA, PR OF CHINA
.RNAV.STAR.

22 JAN 21 (10-2C) .Eff.27.Jan.1600Z.

ATIS 126.45	Apt Elev 95	Alt Set: hPa Trans Level: FL118 1. RNP 1 or RNAV 1. 2. GNSS required. 3. RADAR required (for RNAV 1).
----------------	----------------	---

KAG 8ZA
KAG 9ZA
RNAV ARRIVALS
(RWY 26)



STAR	ROUTING
KAG 8ZA By ATC	KAGUK - AGEGI (FL148-; 9850+ or by ATC) - SY5-8 (5910+) - SY468 (4930+) - SY5-1 (K220-; 3940+).
KAG 9ZA	KAGUK - AGEGI (FL148-; 9850+ or by ATC) - SYX (4930+) - SY5-7 (K220-; 4930+).

ZJSY/SYX
PHOENIX

JEPPESEN
22 JAN 21 (10-2E) .Eff.27.Jan.1600Z.

SANYA, PR OF CHINA
.STAR.

FL CONVERSION FL118 FL3600m	ATIS 126.45	Apt Elev 95	Alt Set: hPa Trans Level: FL118
-------------------------------------	----------------	----------------	------------------------------------

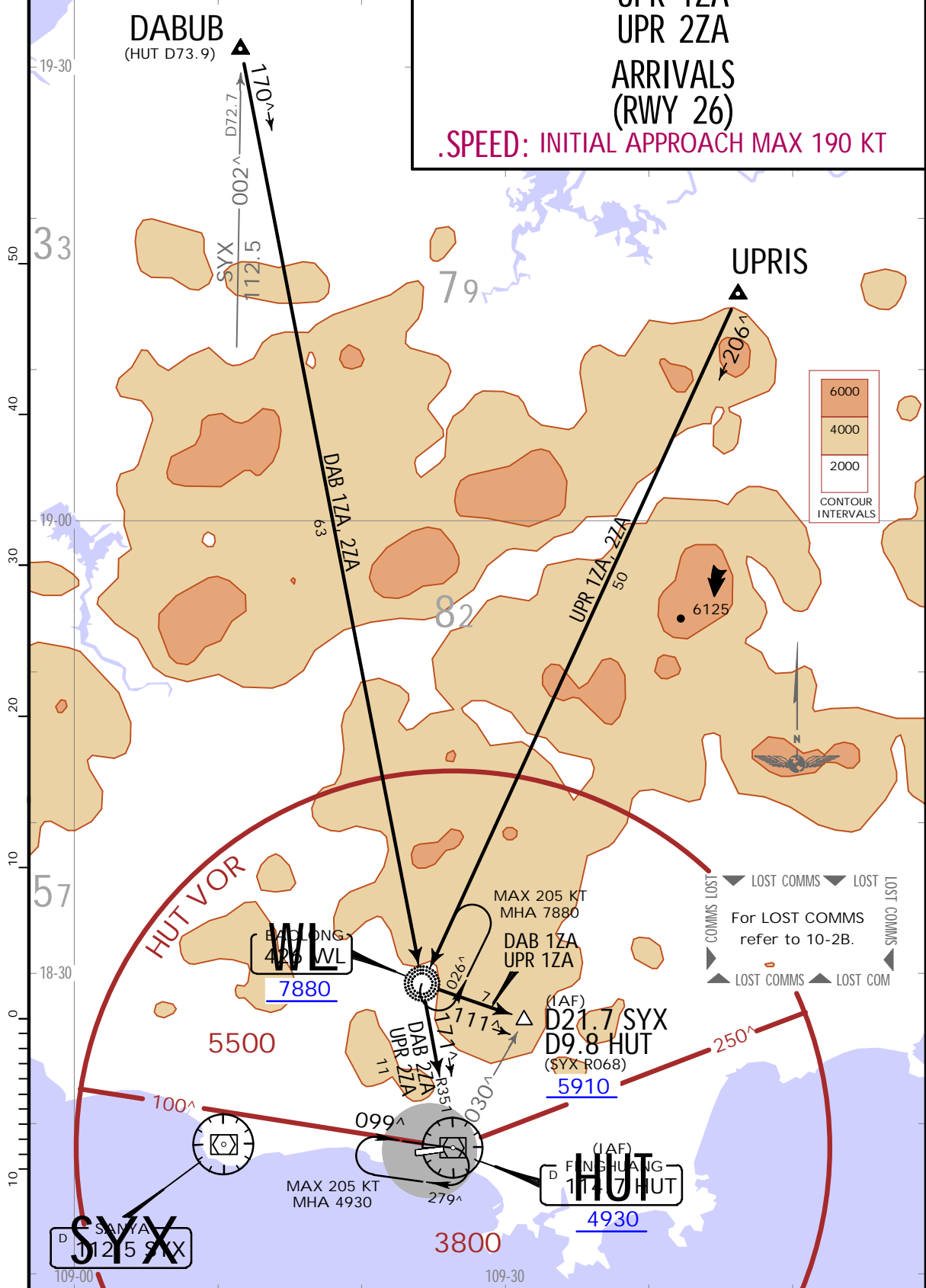
FT/METER CONVERSION	
QNH	
7880'	- 2400m
5910'	- 1800m
4930'	- 1500m

DAB 1ZA
DAB 2ZA
BY ATC

UPR 1ZA
UPR 2ZA

ARRIVALS
(RWY 26)

.SPEED: INITIAL APPROACH MAX 190 KT



ZJSY/SYX
PHOENIX

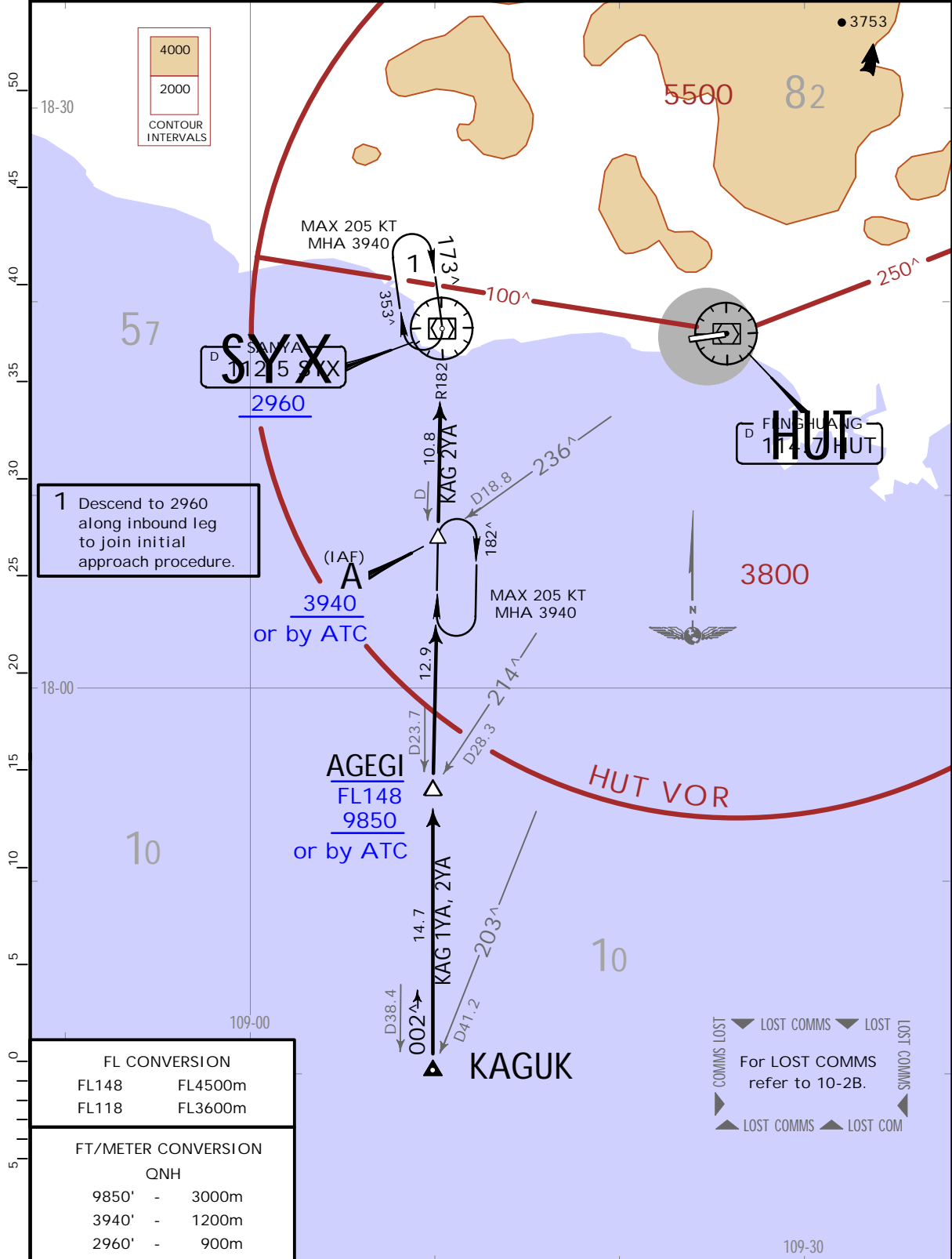
JEPPESEN
22 JAN 21 (10-2F) .Eff.27.Jan.1600Z.

SANYA, PR OF CHINA
.STAR.

ATIS 126.45	Apt Elev 95	Alt Set: hPa Trans Level: FL118
----------------	----------------	------------------------------------

KAG 1YA
KAG 2YA
ARRIVALS
(RWY 08)

.SPEED: INITIAL APPROACH MAX 190 KT



1 Descend to 2960 along inbound leg to join initial approach procedure.

FL CONVERSION	
FL148	FL4500m
FL118	FL3600m
FT/METER CONVERSION	
QNH	
9850'	- 3000m
3940'	- 1200m
2960'	- 900m

COMMS LOST
For LOST COMMS refer to 10-2B.
LOST COMMS

ZJSY/SYX
PHOENIX

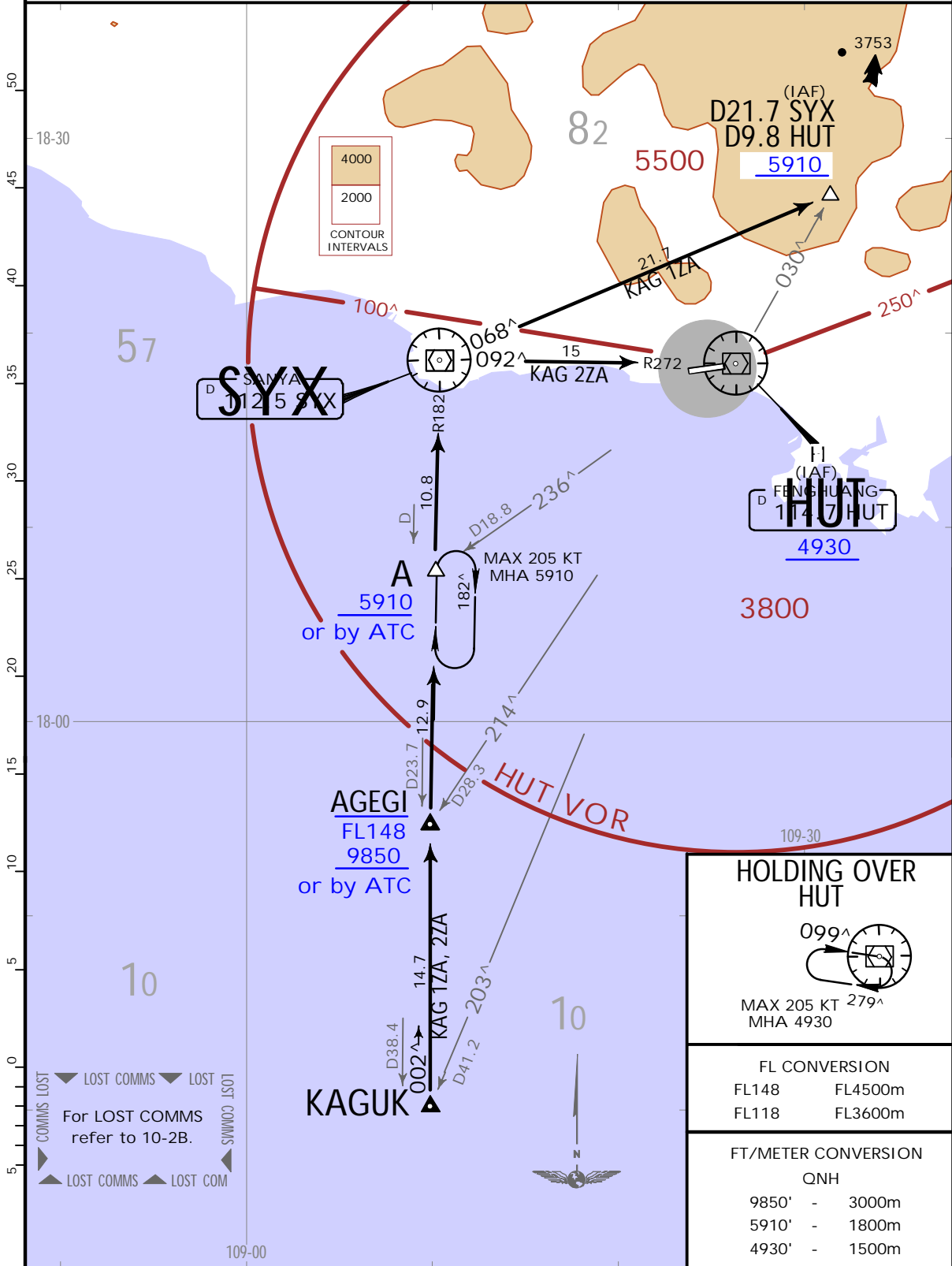
JEPPESSEN
22 JAN 21 **10-2G** .Eff.27.Jan.1600Z.

SANYA, PR OF CHINA
.STAR.

ATIS 126.45	Apt Elev 95	Alt Set: hPa Trans Level: FL118
----------------	----------------	------------------------------------

**KAG 1ZA
KAG 2ZA
ARRIVALS
(RWY 26)**

.SPEED: INITIAL APPROACH MAX 190 KT



CHANGES: LOST COMM reference.

JEPPESSEN, 2020, 2021. ALL RIGHTS RESERVED.

ZJSY/SYX
PHOENIX

JEPPESEN

SANYA, PR OF CHINA

22 JAN 21

10-3

.Eff.27.Jan.1600Z.

.RNAV.SID.

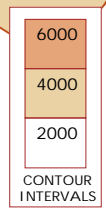
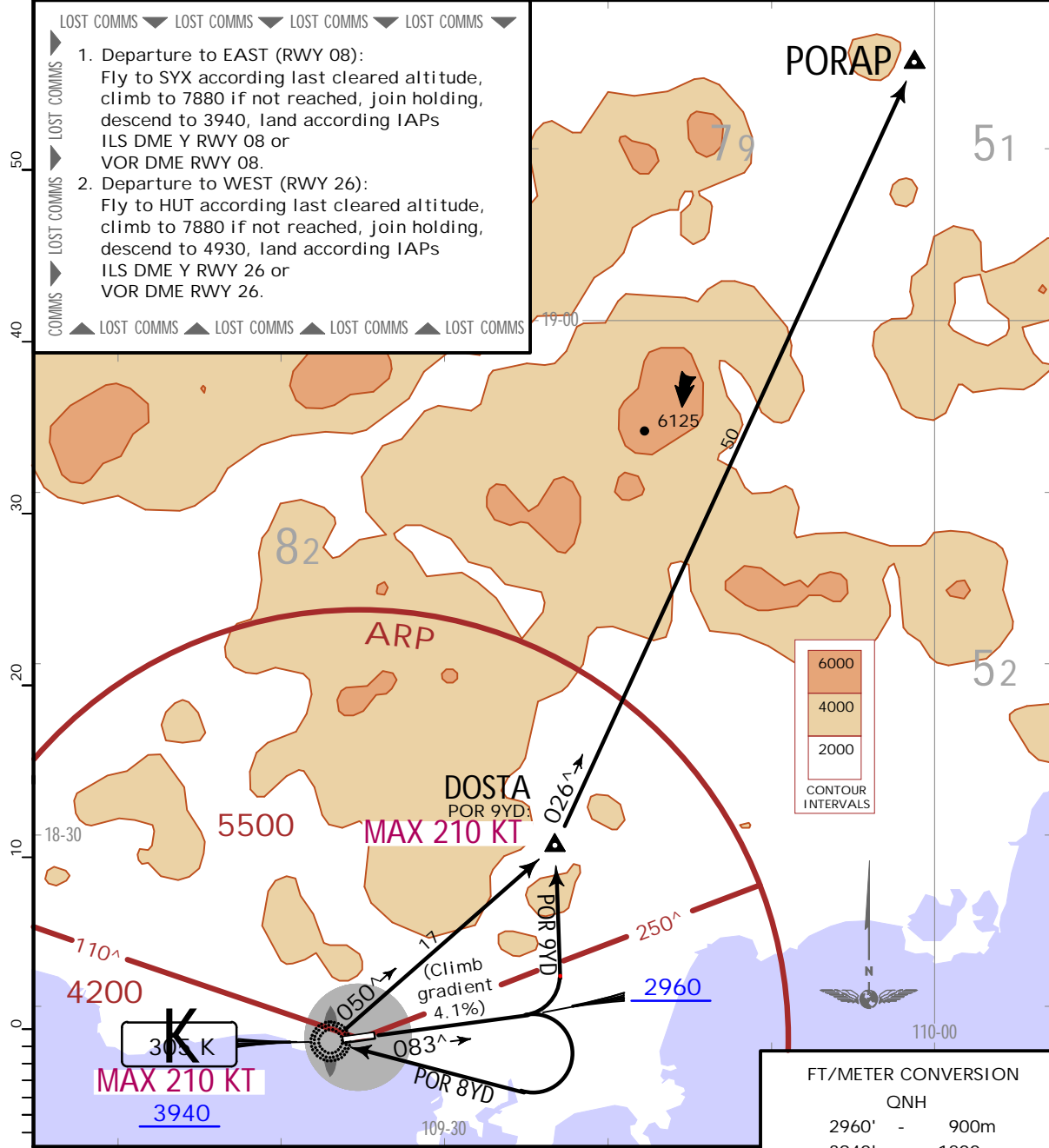
Apt Elev 95	Trans Alt: 9850 10830 1031 hPa or above 8860 979 hPa or below 1. RNP 1 or RNAV 1. 2. GNSS required. 3. RADAR required (for RNAV 1). 4. Apply noise abatement procedures during climb.
----------------	---

**POR 8YD
POR 9YD
RNAV DEPARTURES
(RWY 08)**

LOST COMMS ▼ LOST COMMS ▼ LOST COMMS ▼ LOST COMMS ▼

LOST COMMS ▲ LOST COMMS ▲ LOST COMMS ▲ LOST COMMS ▲

1. Departure to EAST (RWY 08):
Fly to SYX according last cleared altitude, climb to 7880 if not reached, join holding, descend to 3940, land according IAPs
ILS DME Y RWY 08 or
VOR DME RWY 08.
2. Departure to WEST (RWY 26):
Fly to HUT according last cleared altitude, climb to 7880 if not reached, join holding, descend to 4930, land according IAPs
ILS DME Y RWY 26 or
VOR DME RWY 26.



FT/METER CONVERSION

QNH

2960'	-	900m
3940'	-	1200m
8860'	-	2700m
9850'	-	3000m
10830'	-	3300m

Gnd speed-KT	75	100	150	200	250	300
4.1% V/V (fpm)	311	415	623	830	1038	1246

SID	ROUTING
POR 8YD	(2960+) - K (K210-) - 3940+ - DOSTA - PORAP.
POR 9YD	(2960+) - DOSTA (K210-) - PORAP.

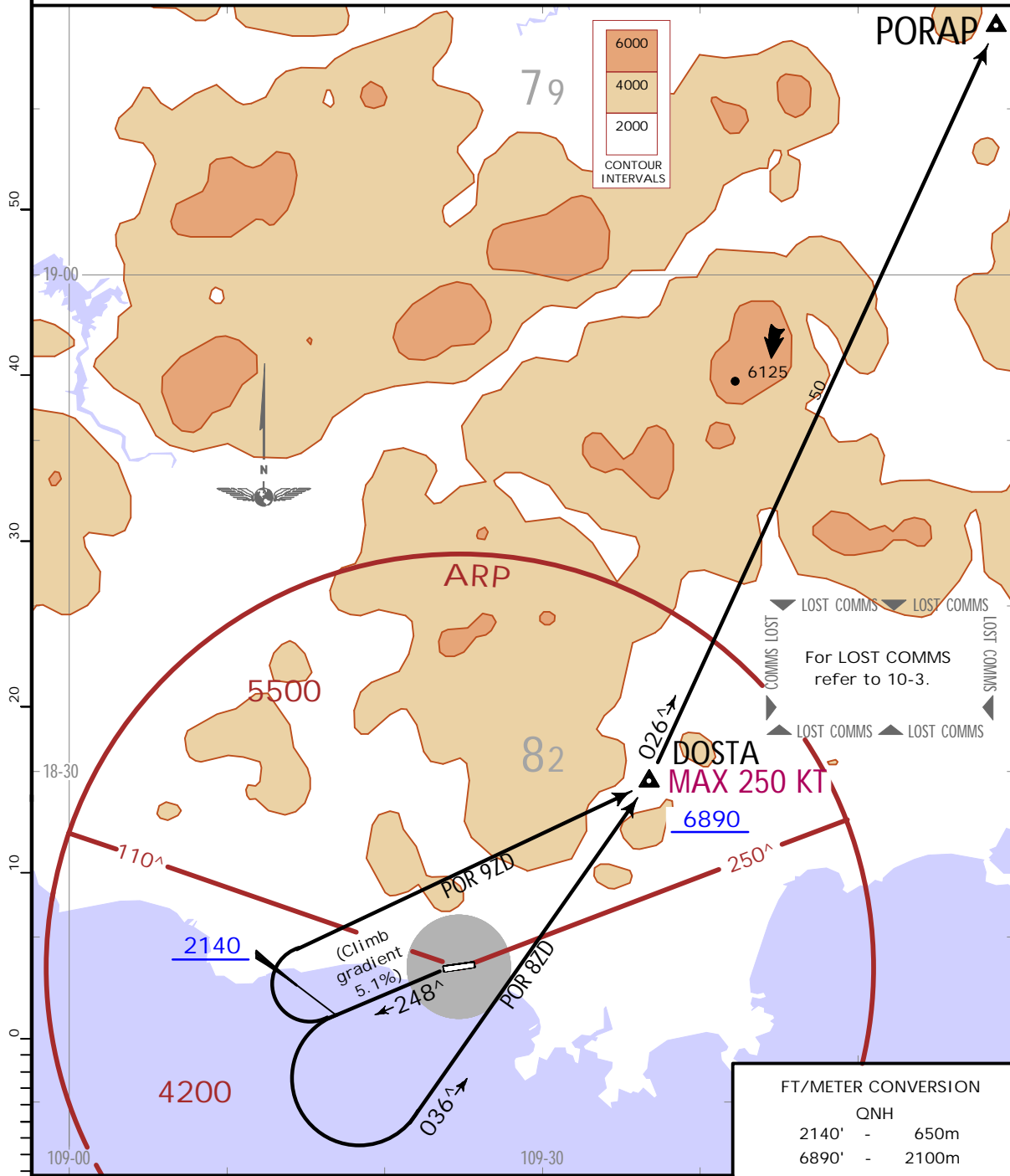
ZJSY/SYX
PHOENIX

JEPPESEN
22 JAN 21 **(10-3A)** .Eff.27.Jan.1600Z.

SANYA, PR OF CHINA
.RNAV.SID.

Apt Elev 95	Trans Alt: 9850
	10830 1031 hPa or above 8860 979 hPa or below
1. RNP 1 or RNAV 1. 2. GNSS required. 3. RADAR required (for RNAV 1). 4. Apply noise abatement procedures during climb.	

**POR 8ZD, POR 9ZD
RNAV DEPARTURES
(RWY 26)**



FT/METER CONVERSION	
QNH	
2140'	- 650m
6890'	- 2100m
8860'	- 2700m
9850'	- 3000m
10830'	- 3300m

Gnd speed-KT	75	100	150	200	250	300
5.1% V/V (fpm)	387	516	775	1033	1291	1549

SID	ROUTING
POR 8ZD	(2140+) - DOSTA (K250-; 6890+) - PORAP.
POR 9ZD	

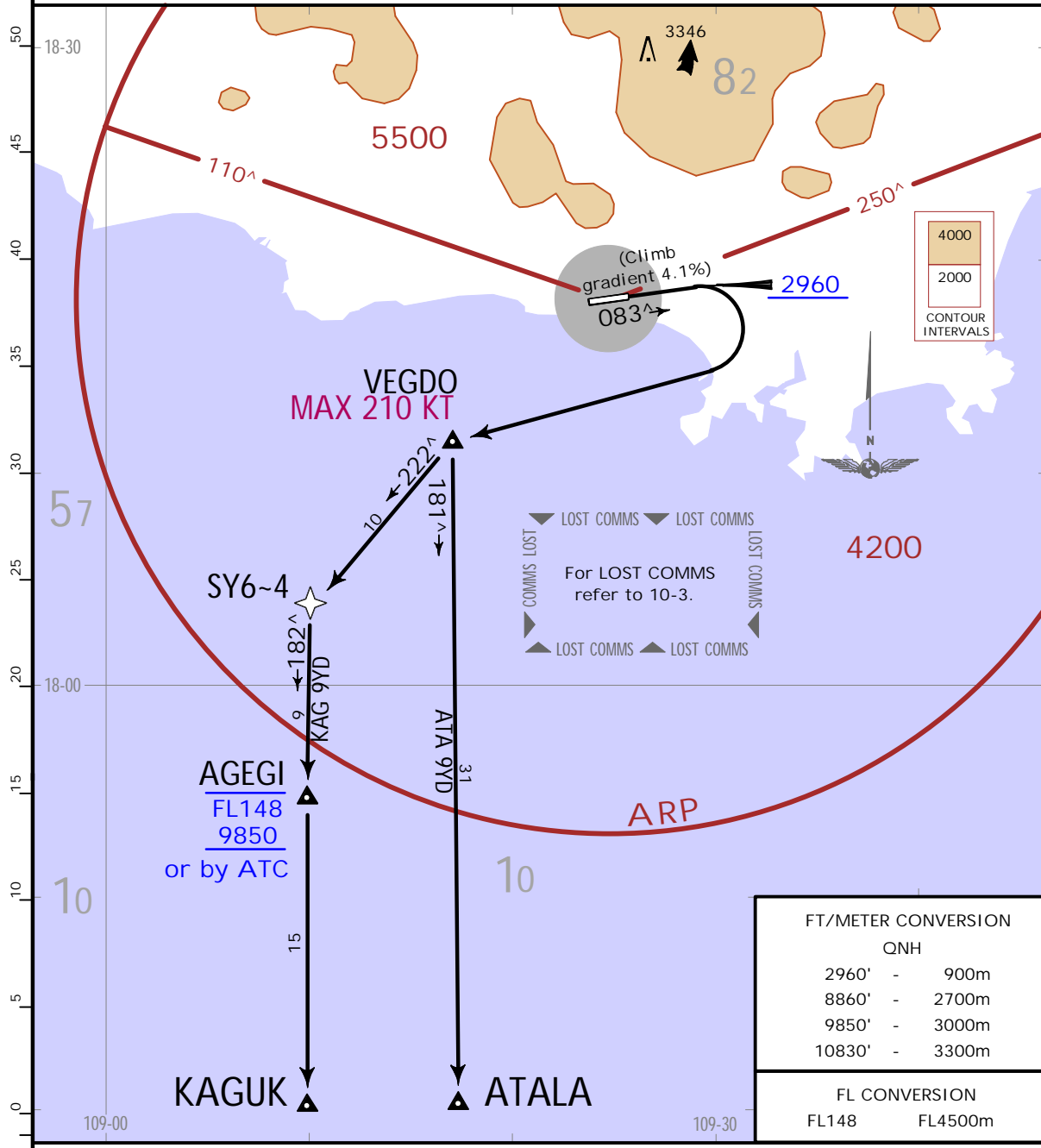
ZJSY/SYX
PHOENIX

JEPPESSEN
22 JAN 21 (10-3B) .Eff.27.Jan.1600Z.

SANYA, PR OF CHINA
.RNAV.SID.

Apt Elev 95	Trans Alt: 9850
	10830 1031 hPa or above 8860 979 hPa or below
	1. RNP 1 or RNAV 1. 2. GNSS required. 3. RADAR required (for RNAV 1). 4. Apply noise abatement procedures during climb.

**ATA 9YD
KAG 9YD
RNAV DEPARTURES
(RWY 08)**



Gnd speed-KT	75	100	150	200	250	300
4.1% V/V (fpm)	311	415	623	830	1038	1246

SID	ROUTING
ATA 9YD	(2960+) - VEGDO (K210-) - ATALA.
KAG 9YD	(2960+) - VEGDO (K210-) - SY6-4 - AGEGI (FL148-; 9850+ or by ATC) - KAGUK.

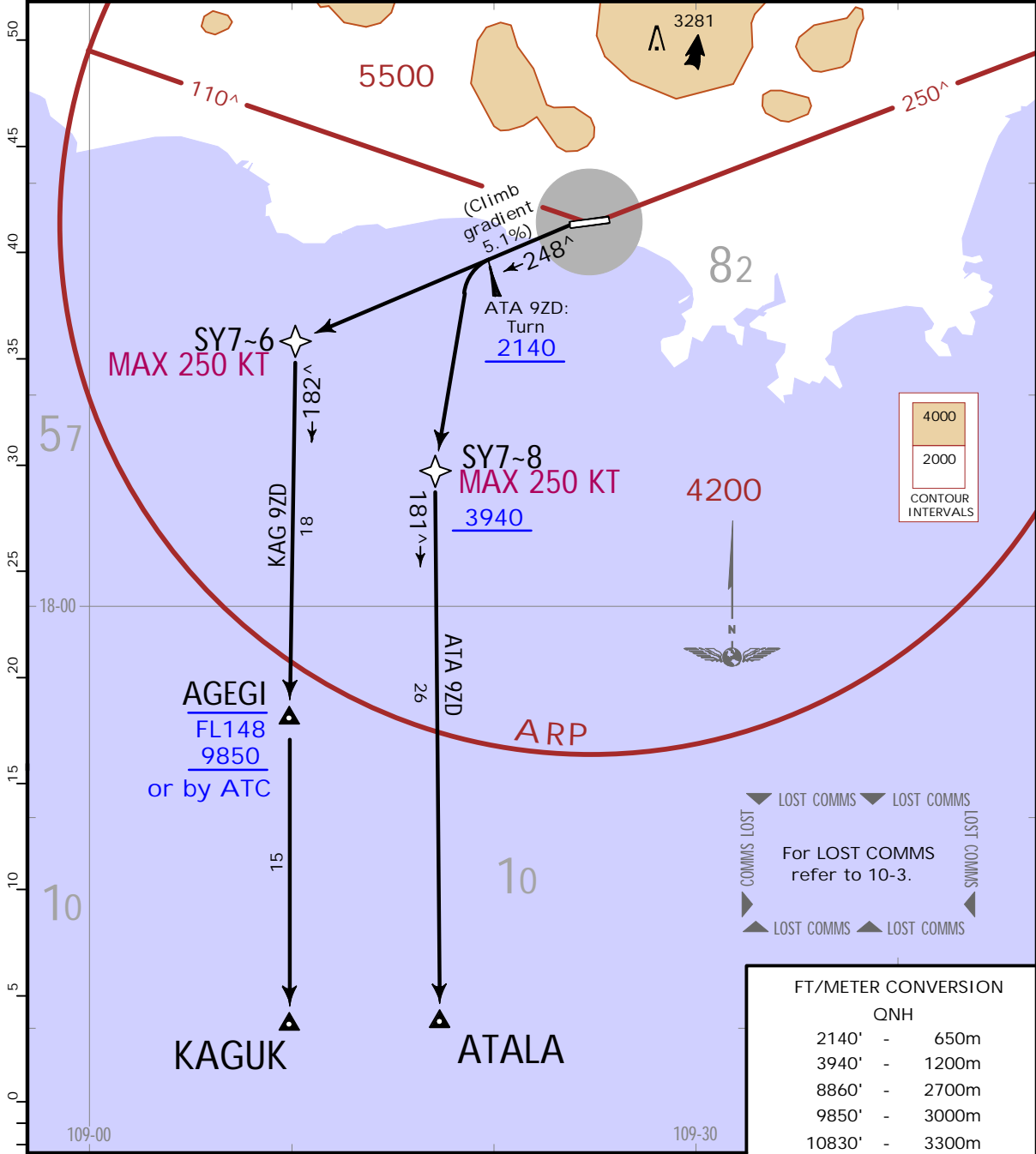
ZJSY/SYX
PHOENIX

JEPPesen
22 JAN 21 **(10-3C)** .Eff.27.Jan.1600Z.

SANYA, PR OF CHINA
.RNAV.SID.

Apt Elev 95	Trans Alt: 9850 10830 1031 hPa or above 8860 979 hPa or below 1. RNP 1 or RNAV 1. 2. GNSS required. 3. RADAR required (for RNAV 1). 4. Apply noise abatement procedures during climb.
----------------	---

**ATA 9ZD
KAG 9ZD
RNAV DEPARTURES
(RWY 26)**



FT/METER CONVERSION	
QNH	
2140'	650m
3940'	1200m
8860'	2700m
9850'	3000m
10830'	3300m

Gnd speed-KT	75	100	150	200	250	300
5.1% V/V (fpm)	387	516	775	1033	1291	1549

FL CONVERSION	
FL148	FL4500m

SID	ROUTING
ATA 9ZD	(2140+) - SY7-8 (K250-; 3940+) - ATALA.
KAG 9ZD	(2140+) - SY7-6 (K250-) - AGEGI (FL148-; 9850+ or by ATC) - KAGUK.

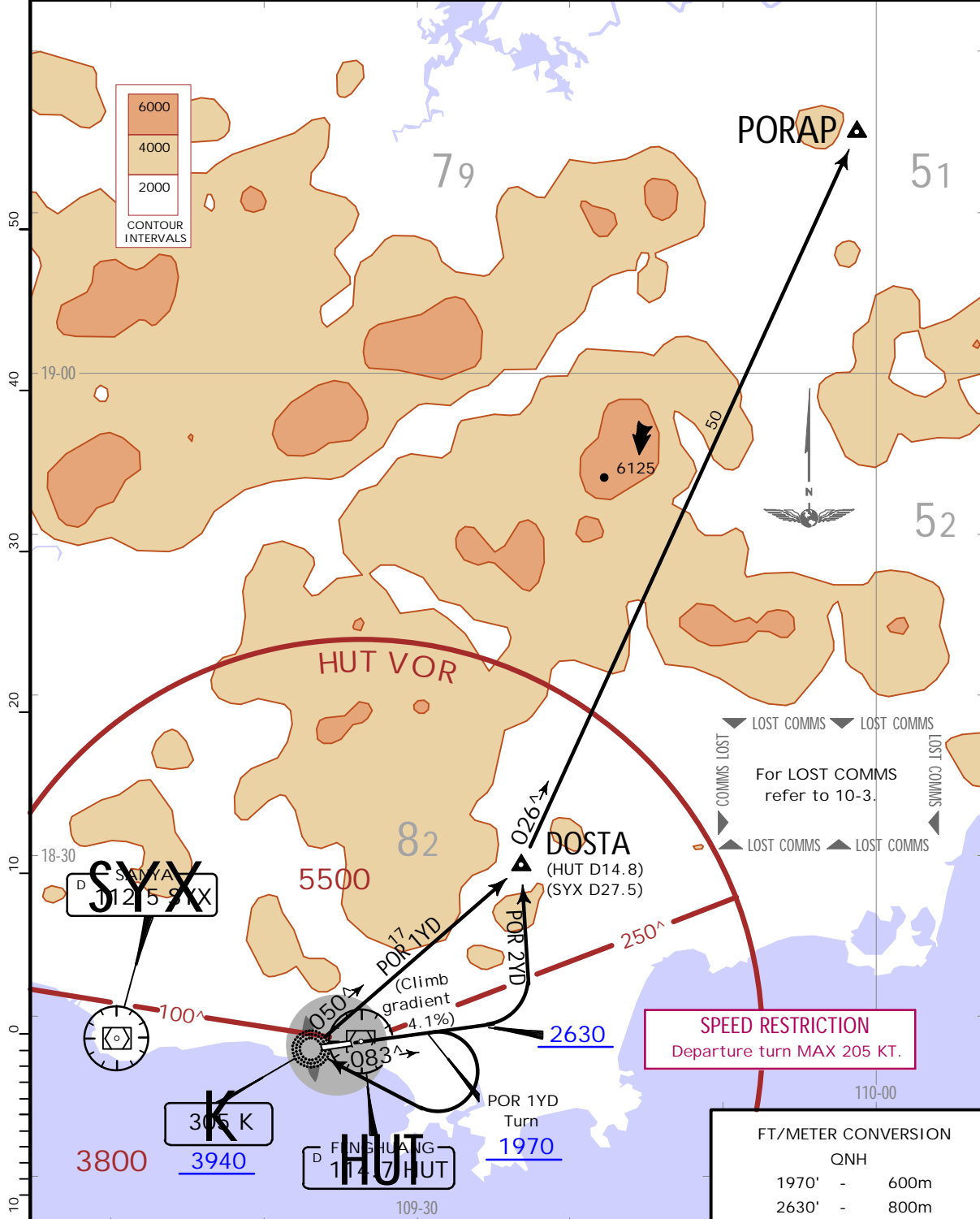
ZJSY/SYX
PHOENIX

JEPPESEN
22 JAN 21 (10-3D) .Eff.27.Jan.1600Z.

SANYA, PR OF CHINA
.SID.

Apt Elev 95	Trans Alt: 9850 10830 1031 hPa or above 8860 979 hPa or below Apply noise abatement procedures during climb.
----------------	---

POR 1YD
POR 2YD
DEPARTURES
(RWY 08)



Gnd speed-KT	75	100	150	200	250	300
4.1% V/V (fpm)	311	415	623	830	1038	1246

FT/METER CONVERSION	
QNH	
1970'	- 600m
2630'	- 800m
3940'	- 1200m
8860'	- 2700m
9850'	- 3000m
10830'	- 3300m

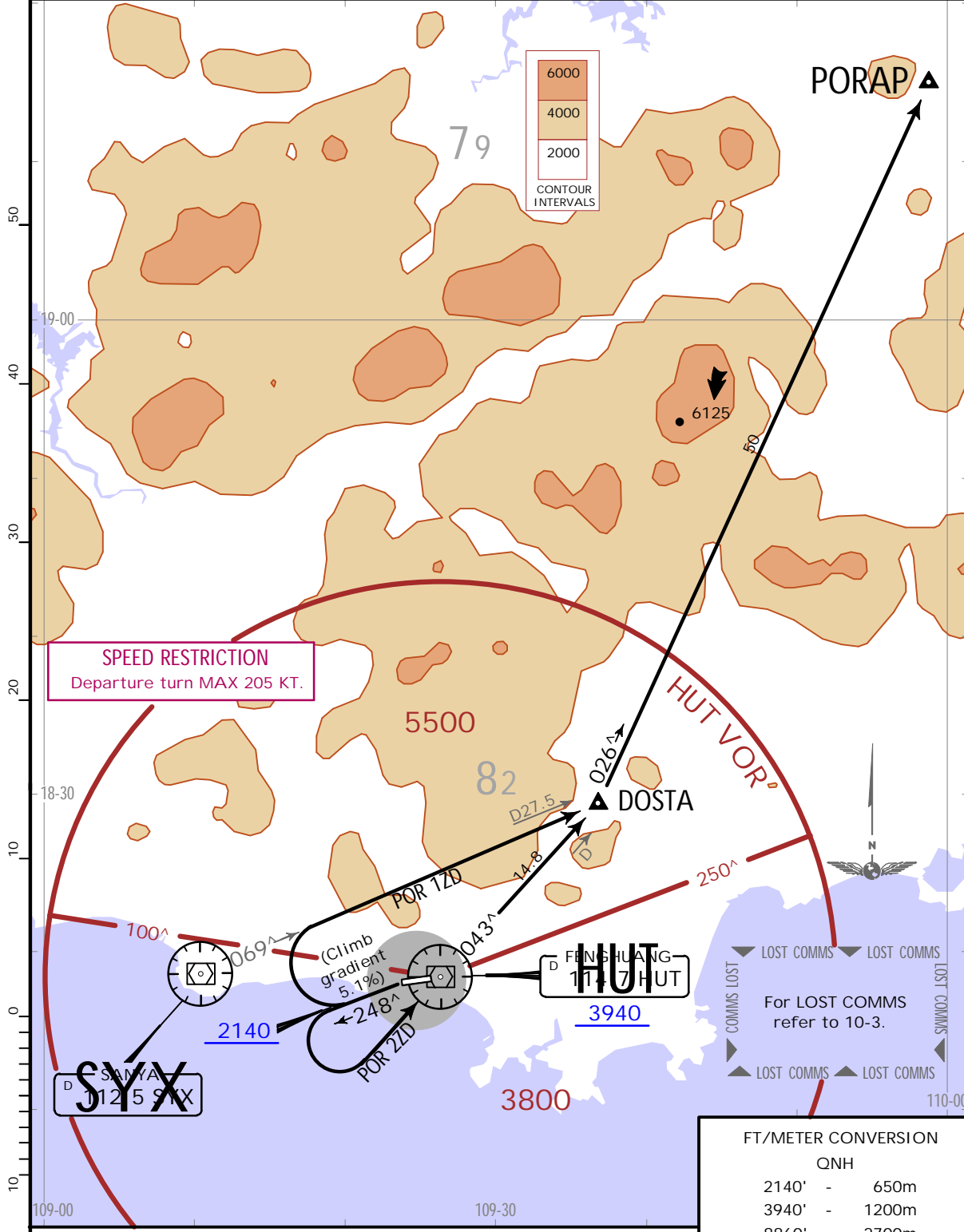
ZJSY/SYX
PHOENIX

JEPPESEN
22 JAN 21 (10-3E) .Eff.27.Jan.1600Z.

SANYA, PR OF CHINA
.SID.

Apt Elev 95	Trans Alt: 9850 10830 1031 hPa or above 8860 979 hPa or below Apply noise abatement procedures during climb.
----------------	---

**POR 1ZD
POR 2ZD
DEPARTURES
(RWY 26)**



SPEED RESTRICTION
Departure turn MAX 205 KT.

FT/METER CONVERSION

QNH

2140'	-	650m
3940'	-	1200m
8860'	-	2700m
9850'	-	3000m
10830'	-	3300m

Gnd speed-KT	75	100	150	200	250	300
5.1% V/V (fpm)	387	516	775	1033	1291	1549

CHANGES: LOST COMM reference.

JEPPESEN, 2020, 2021. ALL RIGHTS RESERVED.

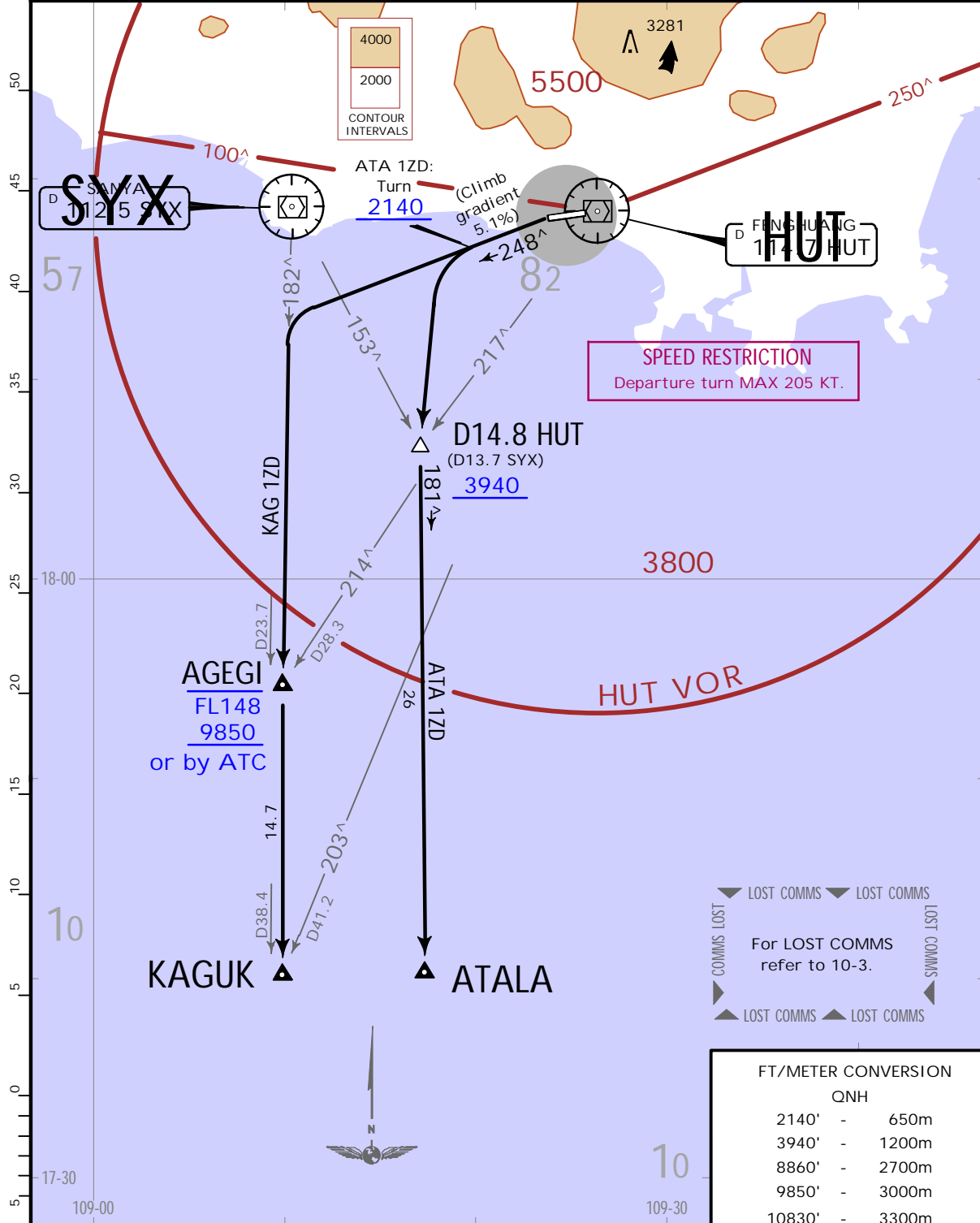
ZJSY/SYX
PHOENIX

JEPPESEN
22 JAN 21 **(10-3G)** .Eff.27.Jan.1600Z.

SANYA, PR OF CHINA
.SID.

Apt Elev 95	Trans Alt: 9850 10830 1031 hPa or above 8860 979 hPa or below Apply noise abatement procedures during climb.
----------------	---

**ATA 1ZD
KAG 1ZD
DEPARTURES
(RWY 26)**



Gnd speed-KT	75	100	150	200	250	300
5.1% V/V (fpm)	387	516	775	1033	1291	1549

FT/METER CONVERSION

QNH

2140'	-	650m
3940'	-	1200m
8860'	-	2700m
9850'	-	3000m
10830'	-	3300m

FL CONVERSION

FL148	FL4500m
-------	---------

CHANGES: LOST COMM reference.

JEPPESEN, 2020, 2021. ALL RIGHTS RESERVED.

JZSY/SYX



SANYA, PR OF CHINA

24 MAR 23 (10-9A)

PHOENIX

RWY	ADDITIONAL RUNWAY INFORMATION						USABLE LENGTHS		WIDTH	
							LANDING	BEYOND		
							Threshold	Glide Slope	TAKE-OFF	
08	HIRL (60m)	CL(30m)	HIALS	SFL	PAPI-L(3.0°)	1 RVR		10,200'	3109m	
26	HIRL (60m)	CL(30m)	HIALS	SFL	PAPI-L(3.0°)	2 RVR		10,204'	3110m	148' 45m

- 1 HST-A5 & A6.
- 2 HST-A2.

HOT SPOT PROCEDURES

(For information only, not to be construed as ATC instructions.)

For the purpose of reducing errors that lead to ground conflicts and runway incursions, ACFT operating within the maneuvering area must follow the requirement below:

- HS1** Intersections between TWY A, TWY B and TWY A1:
When RWY 08 is in operation, ACFT taxiing out of this area will have conflict with ACFT taxiing in. If ACFT are approaching each other, the ACFT only can be towed by towing vehicle. Flight crew shall observe in advance before taxiing into TWY B2. If have any conflict, stop immediately and inform ATC.
- HS2** Intersections between TWY C, TWY B and TWY B5:
This is an intersection of multi-taxiways, flight crew shall observe in advance when taxiing into this area. If have any conflicts, report to ATC immediately.
- HS3** Intersections between TWY B6, TWY A and TWY B:
When RWY 08 is in operation, ACFT taxiing out of this area will have conflict with ACFT taxiing in. Flight crew shall observe in advance before taxiing into TWY B7. If have any conflict, stop immediately and inform ATC.
- HS4** Intersections between TWY A3, TWY A and TWY B:
This is an intersection of multi-taxiways, and any RWY to be used will have taxiing conflict. When ACFT is approaching intersection through TWY A3, A and B, advanced observation is required to avoid conflicts. Due to TWY A and B are close to each other, flight crew shall pay more attention to the taxi routes in these areas. If any doubt or confused, report to ATC immediately.
- HS5** Intersections between TWY A and TWY A4:
When RWY 26 is in operation, if ACFT taxiing out of stand 101 thru 118 and 507 thru 513 is approaching this intersection area, flight crew shall observe in advance before taxiing into TWY A, in order to avoid any conflict with ACFT on TWY A.

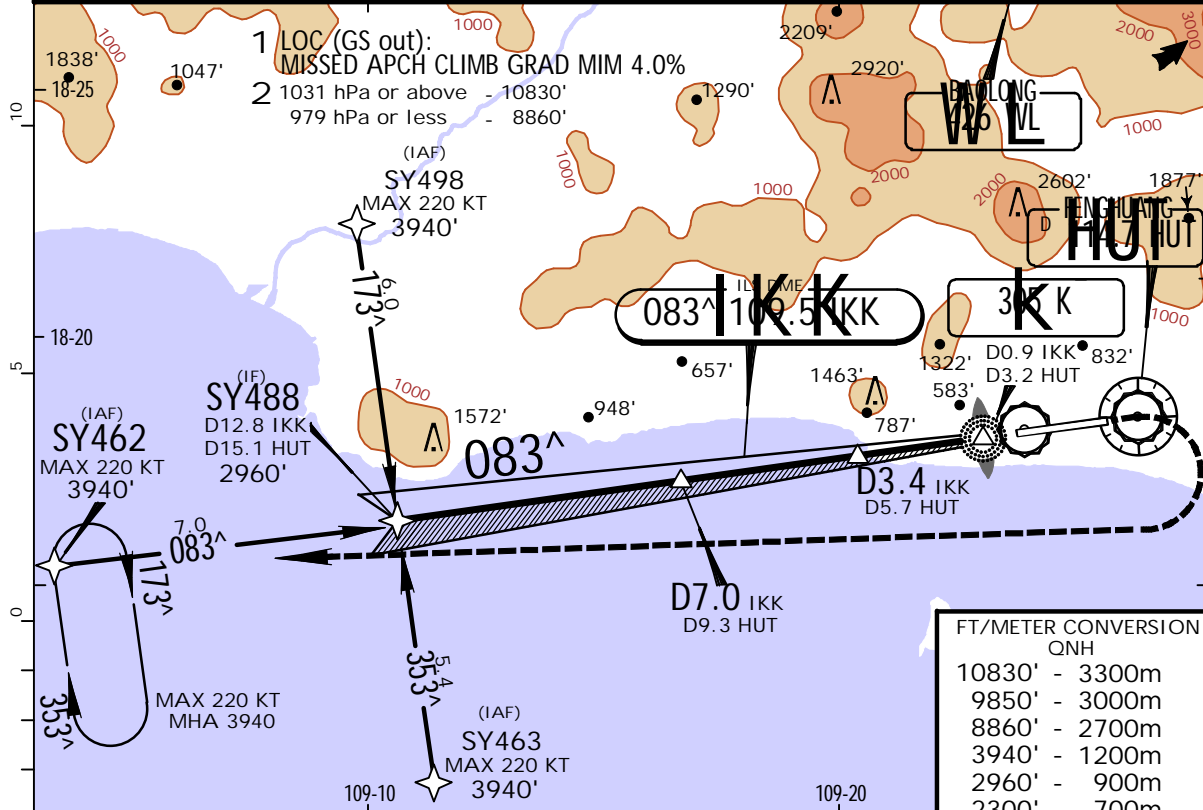
Standard.		TAKE-OFF			
		RWY 08		RWY 26	
		RL	NIL (DAY only)	RL	NIL (DAY only)
2 TURB Eng or 3 & 4 Eng	A	RVR 400m VIS 800m	RVR 500m VIS 800m	ceiI 300m - VIS 5000m	
	B				
	C				
	D				
Other 1&2 Eng		VIS 1600m		Minimums not established by CAAC	

ZJSY/SYX
PHOENIX

JEPPESSEN
1 JAN 21 **11-1**

SANYA, PR OF CHINA
1 RNAV ILS DME Z Rwy 08

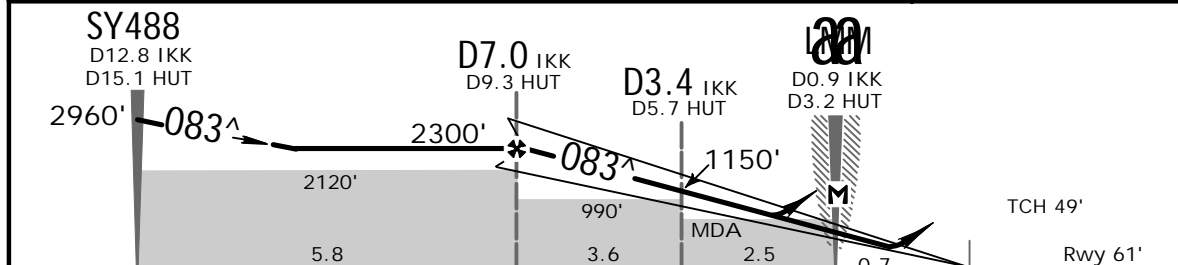
ATIS 126.450		SANYA Approach(R) *APP01 127.925 APP02 125.550		FENGHUANG Tower 118.150	*Ground 121.7
LOC IKK 109.5	Final Apch Crs 083[^]	GS D7.0 IKK (2239')	ILS DA(H) Refer to Minimums	Apt Elev 94' Rwy 61'	
MISSED APCH: Climb STRAIGHT AHEAD to 1970', then turn RIGHT (MAX 220 KT) to SY462 at 3940' and join holding or as directed.					
Alt Set: hPa		Rwy Elev: 2 hPa	Trans level: FL 118	Trans alt: 9850' 2	



FT/METER CONVERSION QNH

10830'	-	3300m
9850'	-	3000m
8860'	-	2700m
3940'	-	1200m
2960'	-	900m
2300'	-	700m
1970'	-	600m
1150'	-	350m

LOC (GS out)	IKK DME	6.0	5.0	4.0	3.0
	ALTITUDE	1970'	1660'	1340'	1020'



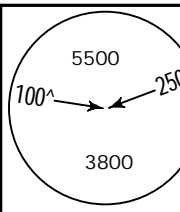
Gnd speed-Kts	70	90	100	120	140	160		HIALS 1970'	220 KT MAX RT
ILS GS or LOC Descent Angle	3.00 [^]	372	478	531	637	743			

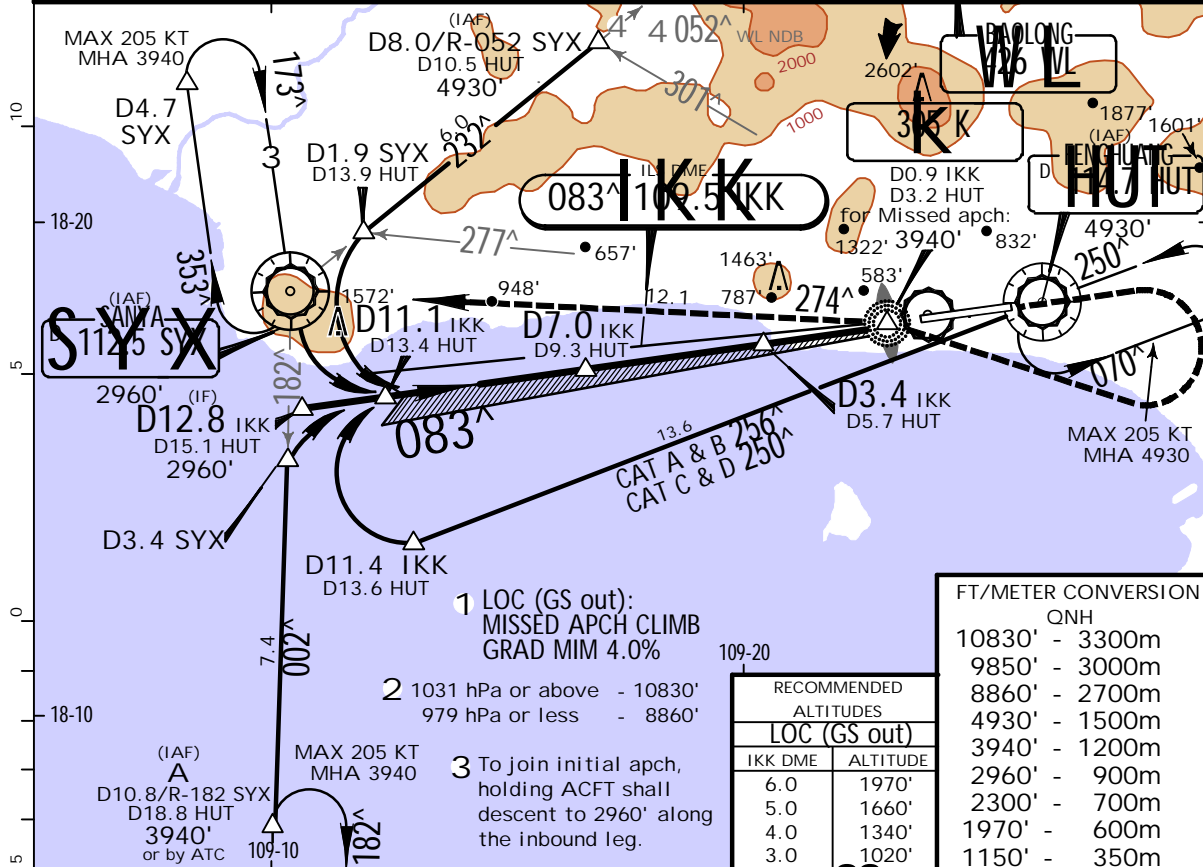
.Standard.				STRAIGHT-IN LANDING RWY 08		LOC (GS out)		CIRCLE-TO-LAND	
Missed apch climb grad mim 4.0%		ILS Missed apch climb grad mim 2.5%		LOC (GS out) Missed apch climb grad mim 4.0%		Not authorized North of runway			
DA(H) 261' (200')		DA(H) AB: 406' (345') CD: 422' (361')		CDFA 760' (699')					
FULL ALS out		FULL ALS out		ALS out					
A									
B	RVR 550m 1	1200m	1200m	1500m	3200m	100	135	1630'(1536')	5000m
C	vis 800m			1700m		180			
D						205			

ZJSY/SYX
PHOENIX

JEPPESSEN
1 JAN 21 **11-2**

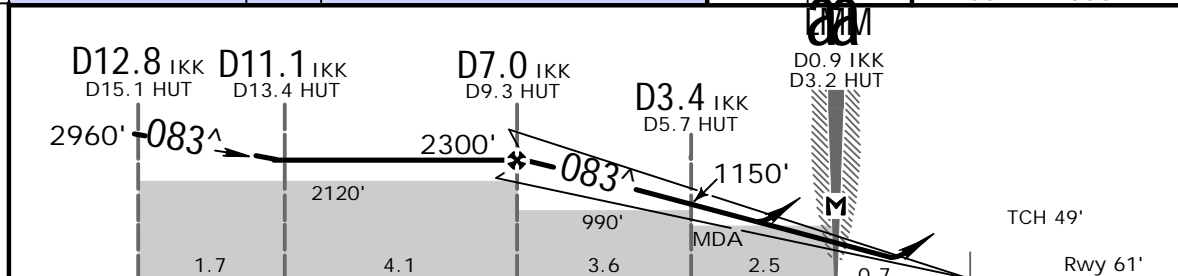
SANYA, PR OF CHINA
1 ILS DME Y Rwy 08

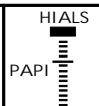
ATIS 126.450		SANYA Approach(R) *APP01 127.925 APP02 125.550		FENGHUANG Tower 118.150	*Ground 121.7
LOC IKK 109.5	Final Apch Crs 083[^]	D7.0 IKK 2300' (2239')	ILS DA(H) Refer to Minimums	Apt Elev 94' Rwy 61'	
MISSED APCH: Climb STRAIGHT AHEAD to 1970', then turn RIGHT to K NDB at 3940', then inbound to SYX VOR on track 274', or as directed. MAX 190 KT.					MSA HUT VOR
Alt Set: hPa		Rwy Elev: 2 hPa	Trans level: FL 118	Trans alt: 9850' 2	
Initial apch MAX 190 KT.					



RECOMMENDED ALTITUDES	
LOC (GS out)	
IKK DME	ALTITUDE
6.0	1970'
5.0	1660'
4.0	1340'
3.0	1020'

FT/METER CONVERSION	
FT	METER
10830'	3300m
9850'	3000m
8860'	2700m
4930'	1500m
3940'	1200m
2960'	900m
2300'	700m
1970'	600m
1150'	350m



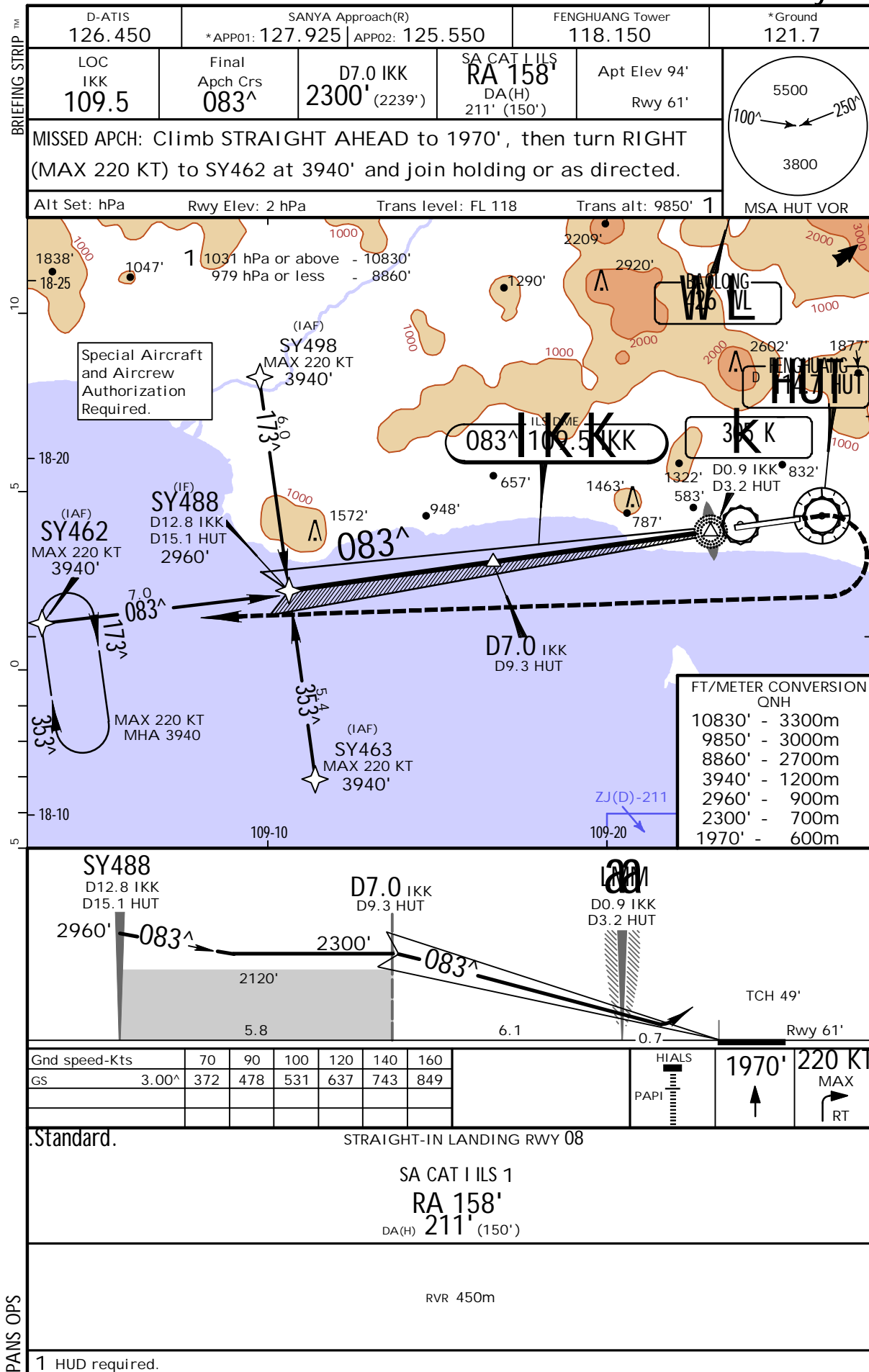
Gnd speed-Kts	70	90	100	120	140	160		190 KT	1970'
ILS GS or LOC Descent Angle	3.00 [^]	372	478	531	637	743		849	MAX

PANS OPS	STRAIGHT-IN LANDING RWY 08				LOC (GS out) Missed apch climb grad mim 4.0%	CIRCLE-TO-LAND Not authorized North of runway
	Standard		ILS			
	Missed apch climb grad mim 4.0%		Missed apch climb grad mim 2.5%		CDFA 760' (699')	Max Kts MDA(H) _____ VIS _____
	DA(H) 261' (200')		DA(H) AB: 406' (345') CD: 422' (361')			
A		FULL	FULL	FULL	3200m	1630'(1536') 5000m
B	RVR 550m 1	ALS out	ALS out	ALS out		
C	vis 800m					
D						

ZJSY/SYX
PHOENIX

JEPPESSEN
1 JUL 22 (11-2A)

SANYA, PR OF CHINA
SA CAT I RNAV
ILS DME Z Rwy 08

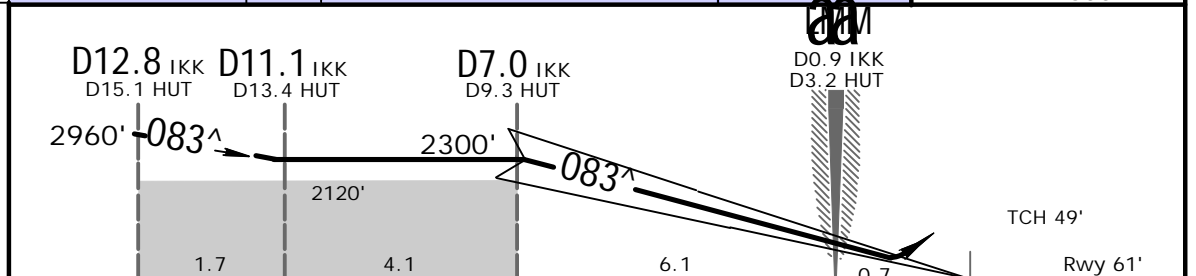
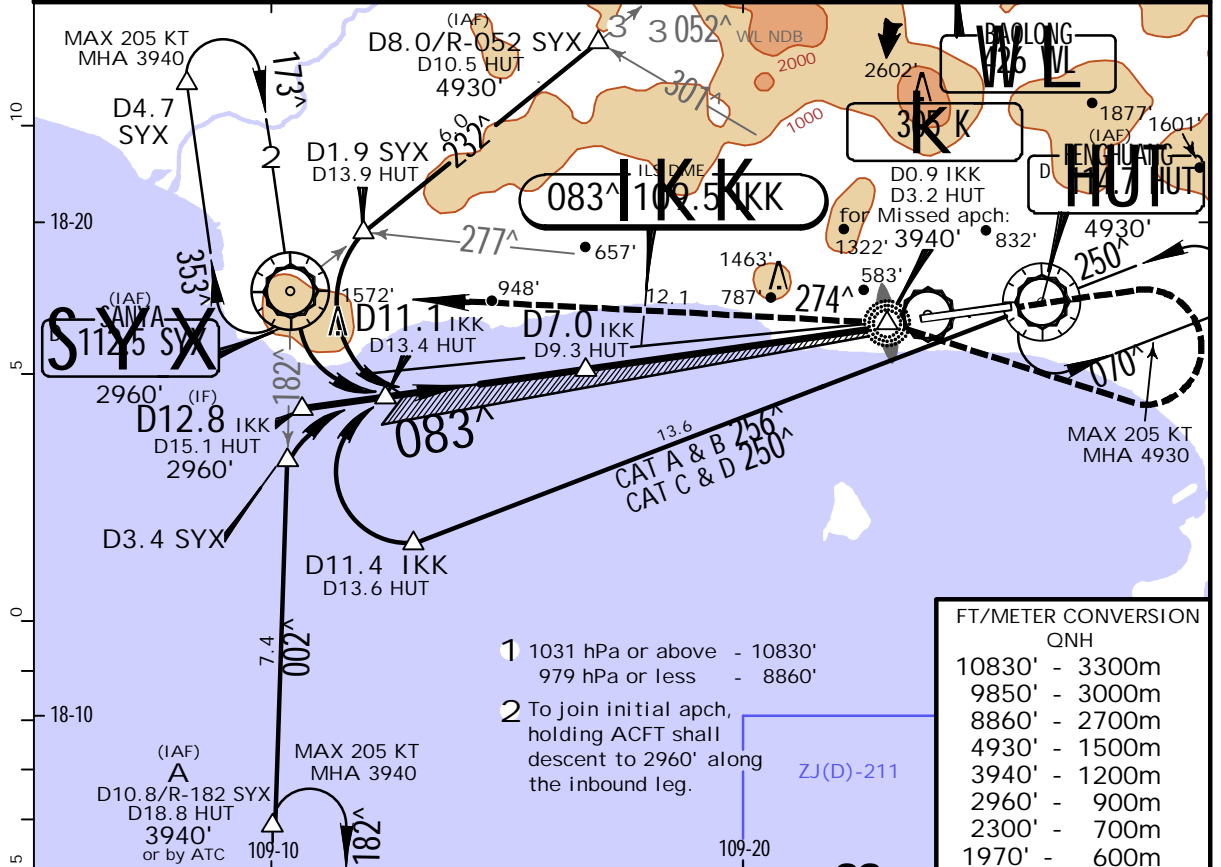


ZJSY/SYX
PHOENIX

JEPPESEN
1 JUL 22 (11-2B)

SANYA, PR OF CHINA
SA CAT I ILS DME Y Rwy 08

D-ATIS 126.450		SANYA Approach(R) *APP01 127.925 APP02 125.550		FENGHUANG Tower 118.150	*Ground 121.7
LOC IKK 109.5	Final Apch Crs 083 [^]	D7.0 IKK 2300' (2239')	SA CAT I ILS RA 158' DA(H) 211' (150')	Apt Elev 94' Rwy 61'	5500' 100° → 250° 3800'
MISSED APCH: Climb STRAIGHT AHEAD to 1970', then turn RIGHT to K NDB at 3940', then inbound to SYX VOR on track 274 [^] , or as directed. MAX 190 KT.					MSA HUT VOR
Alt Set: hPa		Rwy Elev: 2 hPa	Trans level: FL 118	Trans alt: 9850' 1	
1. Special Aircraft and Aircrew Authorization required. 2. Initial apch MAX 190 KT.					



Gnd speed-Kts	70	90	100	120	140	160	HIALS PAPI	190 KT MAX	1970' ↑
GS	3.00 [^]	372	478	531	637	743			

.Standard. STRAIGHT-IN LANDING RWY 08
SA CAT I ILS 1
RA 158'
DA(H) 211' (150')

RVR 450m
1 HUD required.

PANS OPS

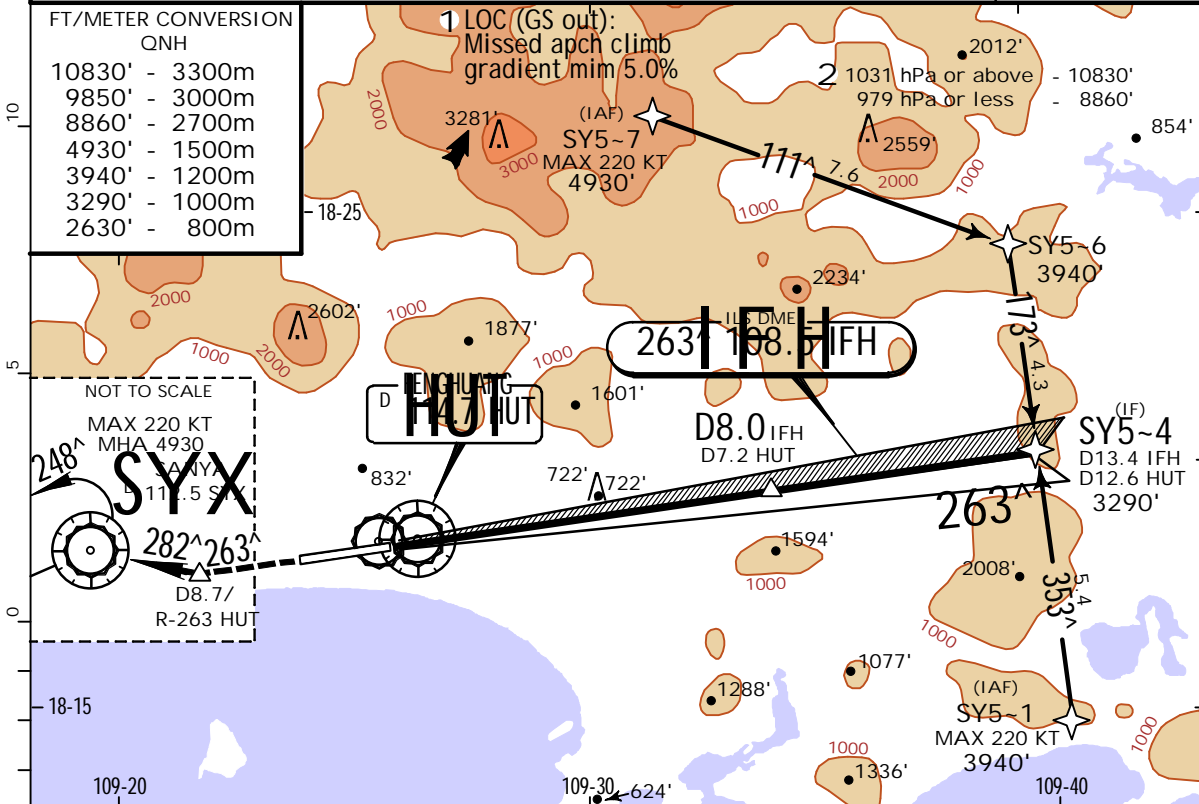
ZJSY/SYX
PHOENIX

JEPPESSEN

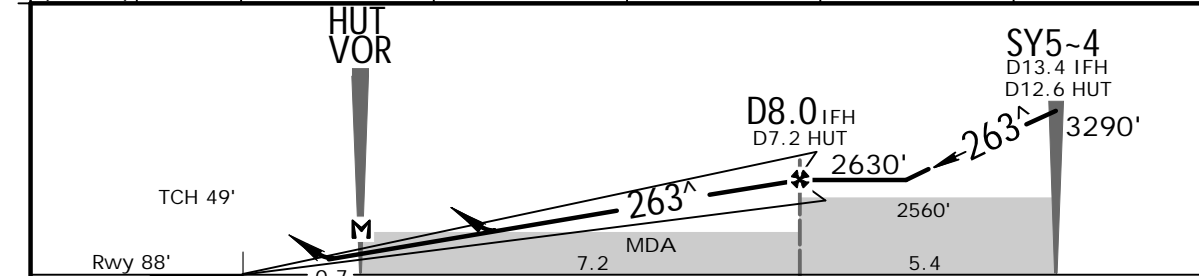
SANYA, PR OF CHINA
1 RNAV ILS DME Z Rwy 26

1 JAN 21 (11-3)

ATIS 126.450		SANYA Approach(R) * APP01 127.925 APP02 125.550		FENGHUANG Tower 118.150	*Ground 121.7
LOC IFH 108.5	Final Apch Crs 263[^]	GS D8.0 IFH 2630' (2542')	ILS DA(H) Refer to Minimums	Apt Elev 94' Rwy 88'	
MISSED APCH: Climb STRAIGHT AHEAD to D8.7/R-263 HUT, then turn RIGHT inbound to SYX VOR at 4930' or above, then join holding or by ATC. MAX 220 KT.					
Alt Set: hPa		Rwy Elev: 3 hPa	Trans level: FL 118		Trans alt: 9850' 2



LOC (GS out)	IFH DME	3.0	4.0	5.0	6.0	7.0
	ALTITUDE	1050'	1360'	1680'	2000'	2320'



Gnd speed-Kts	70	90	100	120	140	160	HI ALS PAPI 220 KT MAX D8.7/R-263 HUT SYX 112.5 RT
ILS GS or LOC Descent Angle	3.00 [^]	372	478	531	637	743	
MAP at VOR							

Standard		STRAIGHT-IN LANDING RWY 26				LOC (GS out)	CIRCLE-TO-LAND
Missed apch climb grad mim 5.0%		Missed apch climb grad mim 2.5%		Missed apch climb grad mim 5.0%		Not authorized North of runway	
DA(H) 288' (200')		A: 711' (623')		B: 728' (640')		CD: 744' (656')	
FULL	ALS out	FULL	ALS out	MDA(H) 1020' (932')	ALS out		

PANS OPS	A		2800m	4600m	100	1630'(1536') 5000m
	B	RVR550m 1 VIS 800m	1200m		135	
	C				180	
	D		3000m		205	

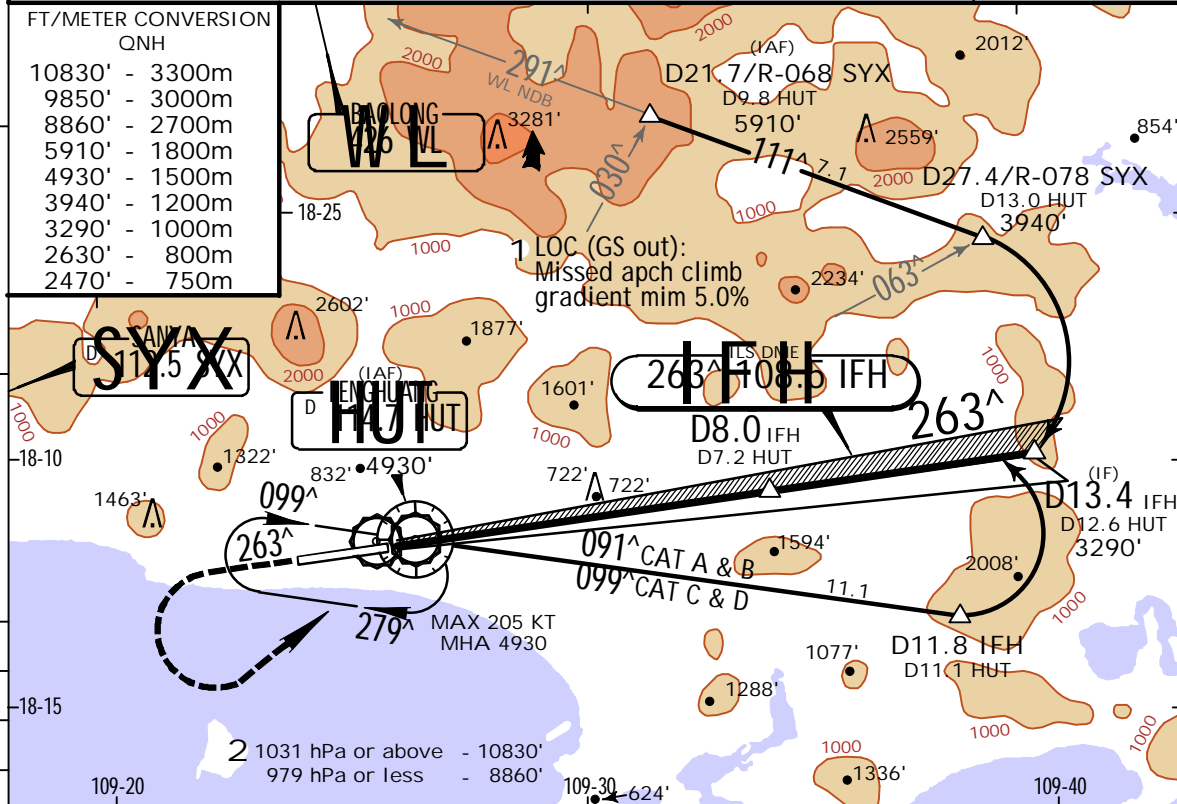
1 RVR 750m when a Flight Director or Autopilot or HUD to DA is not used.
CHANGES: Communication. | JEPPESSEN, 2015, 2021. ALL RIGHTS RESERVED.

ZJSY/SYX
PHOENIX

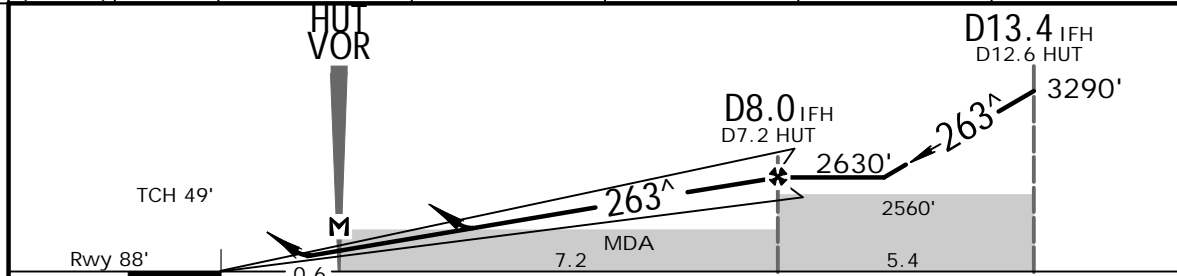
JEPPESSEN
1 JAN 21 (11-4)

SANYA, PR OF CHINA
1 ILS DME Y Rwy 26

ATIS 126.450		SANYA Approach(R) * APP01 127.925 APP02 125.550		FENGHUANG Tower 118.150	*Ground 121.7
LOC IFH 108.5	Final Apch Crs 263 [^]	GS D8.0 IFH 2630' (2542')	ILS DA(H) Refer to Minimums	Apt Elev 94' Rwy 88'	
MISSED APCH: Climb STRAIGHT AHEAD to 2470', then turn LEFT and climb to HUT VOR at 4930' or as directed. MAX 205 KT.					
Alt Set: hPa		Rwy Elev: 3 hPa	Trans level: FL 118	Trans alt: 9850' 2	MSA HUT VOR
Initial apch MAX 190 KT.					



LOC (GS out)	IFH DME	3.0	4.0	5.0	6.0	7.0
	ALTITUDE	1050'	1360'	1680'	2000'	2320'



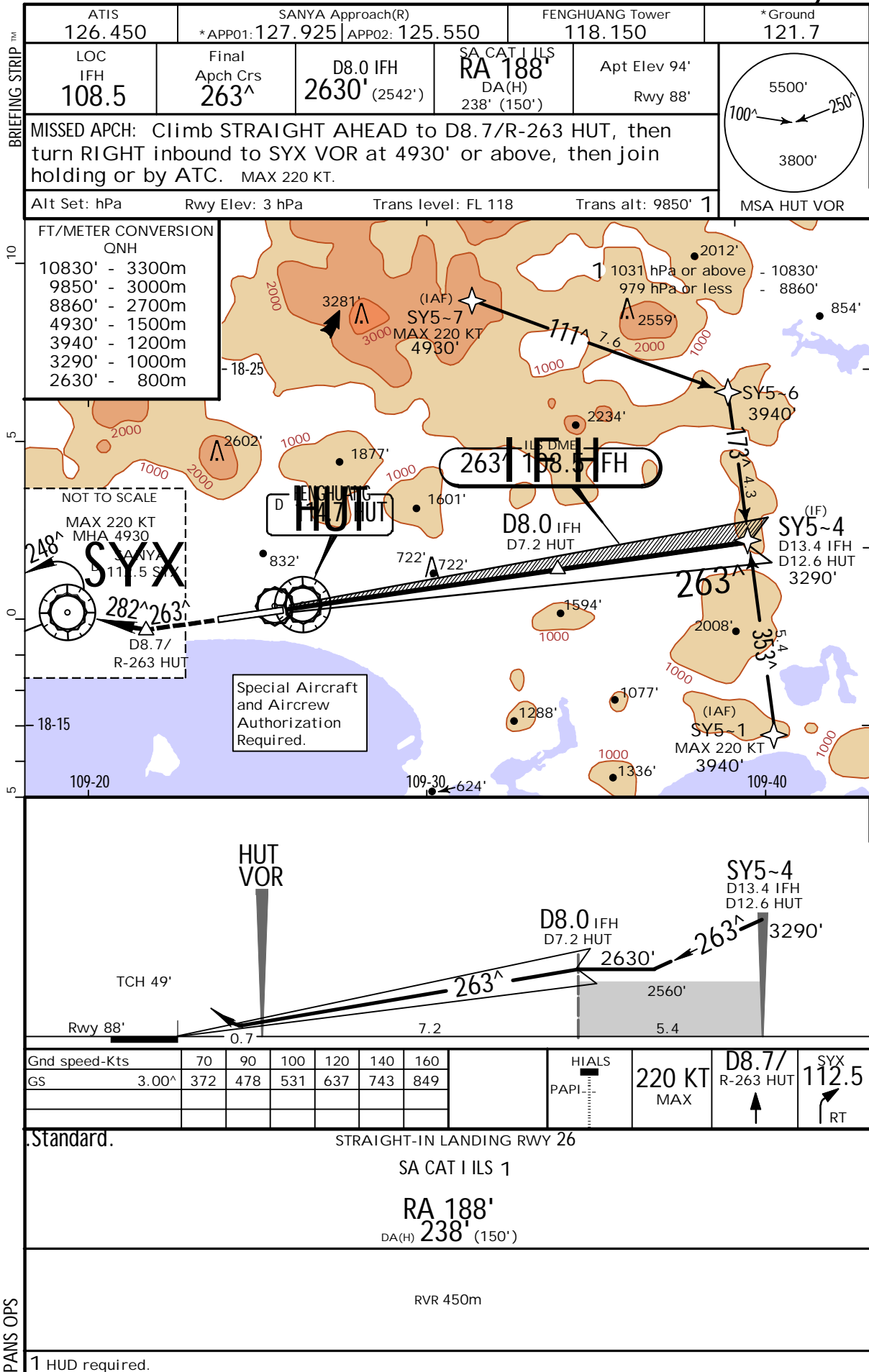
Gnd speed-Kts	70	90	100	120	140	160	HIALS PAPI 205 KT MAX 2470'
ILS GS or LOC Descent Angle	3.00 [^]	372	478	531	637	743	

Standard		STRAIGHT-IN LANDING RWY 26		LOC (GS out)	CIRCLE-TO-LAND
Missed apch climb grad mim 5.0%		Missed apch climb grad mim 2.5%		Missed apch climb grad mim 5.0%	Not authorized North of runway
DA(H) 288' (200')		A: 711' (623') B: 728' (640')		MDA(H) 1020' (932')	
FULL	ALS out	FULL	ALS out	ALS out	
A		2800m		4600m	1630'(1536') 5000m
B	RVR550m 1	2900m			
C	VIS 800m	3000m			
D					
1 RVR 750m when a Flight Director or Autopilot or HUD to DA is not used.					

ZJSY/SYX
PHOENIX

JEPPESSEN
1 JAN 21 (11-4A)

SANYA, PR OF CHINA
SA CAT I RNAV
ILS DME Z Rwy 26



PANS OPS

ZJSY/SYX
PHOENIX

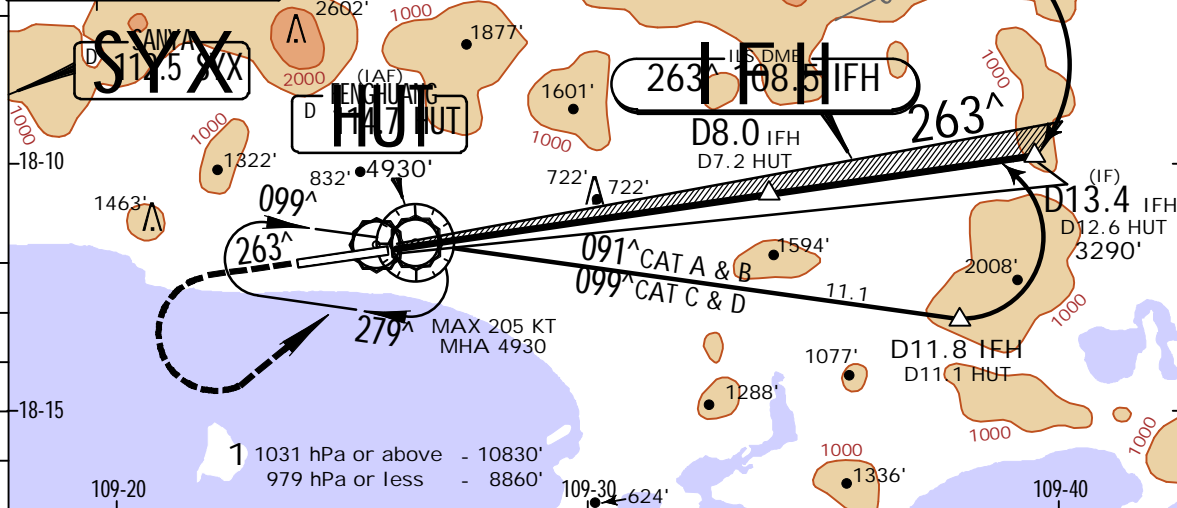
JEPPESEN
1 JAN 21 (11-4B)

SANYA, PR OF CHINA
SA CAT I ILS DME Y Rwy 26

ATIS 126.450		SANYA Approach(R) * APP01 127.925 APP02 125.550		FENGHUANG Tower 118.150	* Ground 121.7
LOC IFH 108.5	Final Apch Crs 263 [^]	D8.0 IFH 2630' (2542')	SA CAT I ILS RA 188' DA(H) 238' (150')	Apt Elev 94' Rwy 88'	
MISSED APCH: Climb STRAIGHT AHEAD to 2470', then turn LEFT and climb to HUT VOR at 4930' or as directed. MAX 205 KT.					MSA HUT VOR
Alt Set: hPa	Rwy Elev: 3 hPa	Trans level: FL 118	Trans alt: 9850' 1		
1. Special Aircraft and Aircrew Authorization required. 2. Initial apch MAX 190 KT.					

FT/METER CONVERSION QNH

10830'	-	3300m
9850'	-	3000m
8860'	-	2700m
5910'	-	1800m
4930'	-	1500m
3940'	-	1200m
3290'	-	1000m
2630'	-	800m
2470'	-	750m

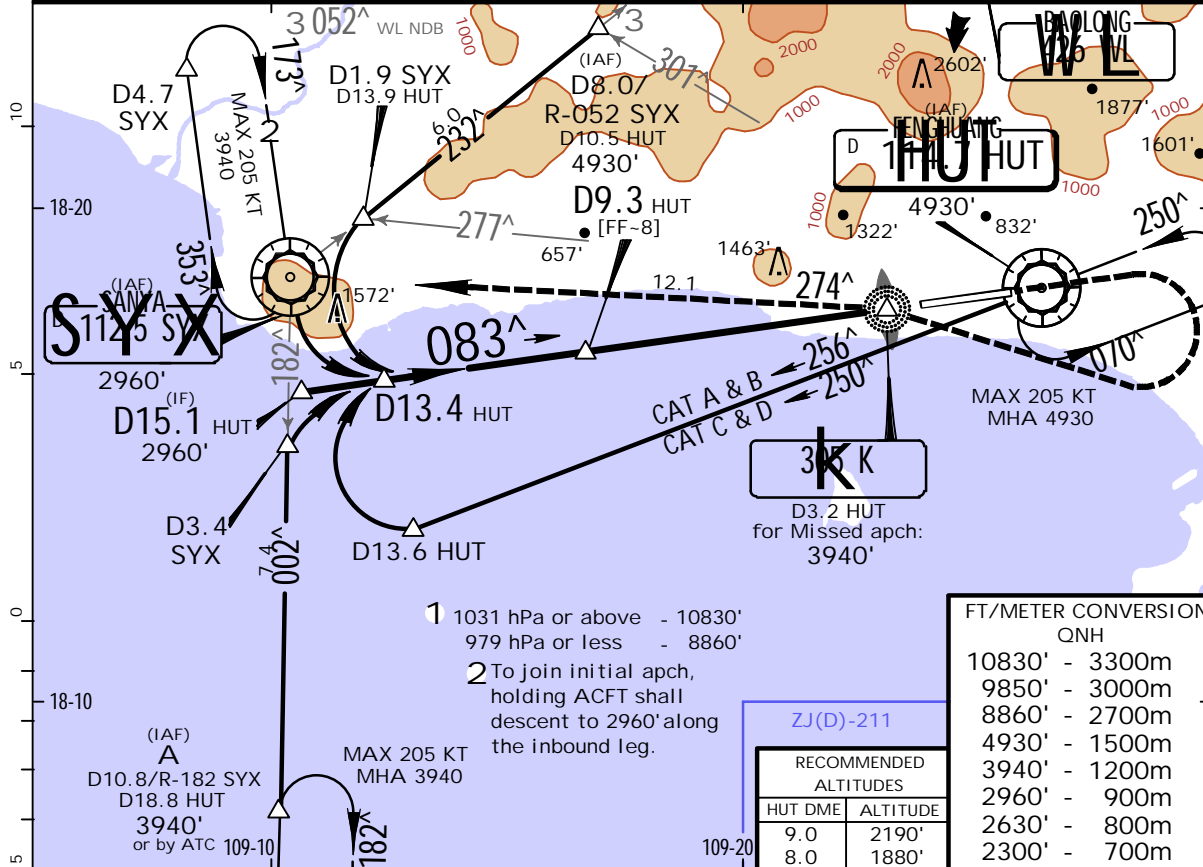


ZJSY/SYX
PHOENIX

JEPPESSEN
1 JUL 22 (13-1)

SANYA, PR OF CHINA
VOR DME Rwy 08

D-ATIS 126.450		SANYA Approach(R) *APP01 127.925 APP02 125.550		FENGHUANG Tower 118.150	*Ground 121.7
VOR HUT 114.7	Final Apch Crs 083 [^]	Procedure Alt D9.3 HUT 2300' (2239')	MDA(H) 1630' (1569')	Apt Elev 94' Rwy 61'	
MISSED APCH: Climb STRAIGHT AHEAD to 2630', then turn RIGHT to K NDB at 3940', then inbound to SYX VOR on 274 [^] , or as directed. MAX 190 KT.					
Alt Set: hPa Initial apch MAX 190 KT.		Rwy Elev: 2 hPa	Trans level: FL 118	Trans alt: 9850' 1	MSA HUT VOR

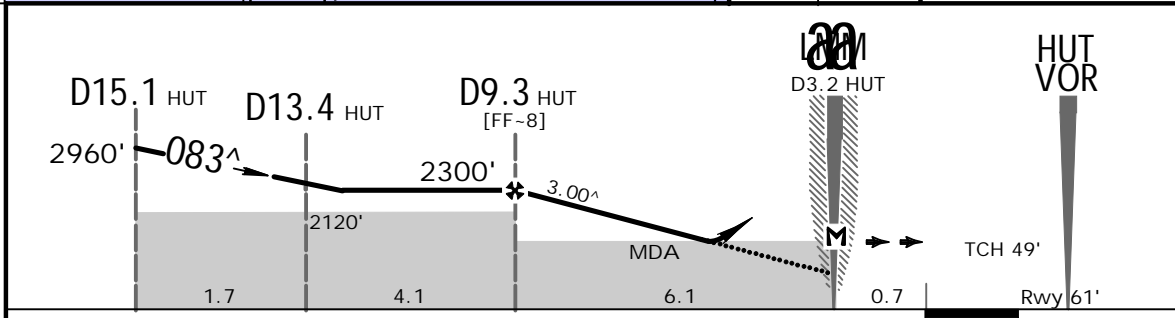


FT/METER CONVERSION QNH

10830'	-	3300m
9850'	-	3000m
8860'	-	2700m
4930'	-	1500m
3940'	-	1200m
2960'	-	900m
2630'	-	800m
2300'	-	700m

RECOMMENDED ALTITUDES

HUT DME	ALTITUDE
9.0	2190'
8.0	1880'



Gnd speed-Kts	70	90	100	120	140	160	HIALS PAPI 190 KT MAX 2630'
Descent Angle	3.00 [^]	372	478	531	637	849	

MAP at LMM/D3.2 HUT Standard.		STRAIGHT-IN LANDING RWY 08		CIRCLE-TO-LAND		
CDFA MDA(H) 1630' (1569')		ALS out		Not authorized North of runway		
PANS OPS	A	5000m	Max Kts	100	MDA(H) 1670' (1576')	VIS 5000m
	B			135		
	C			180		
	D			205		

ZJSY/SYX
PHOENIX

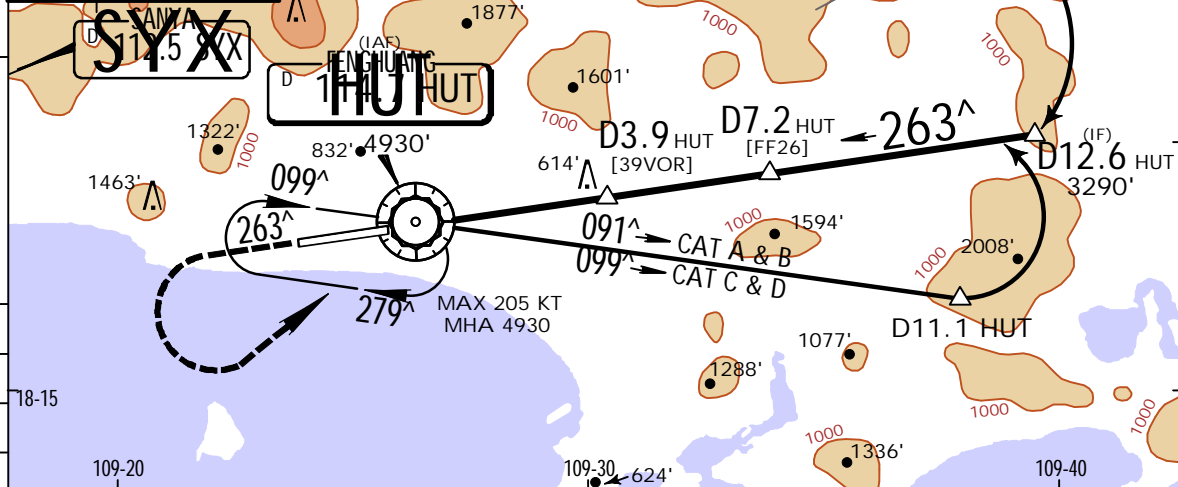
JEPPESSEN
1 JUL 22 (13-2)

SANYA, PR OF CHINA
VOR DME Rwy 26

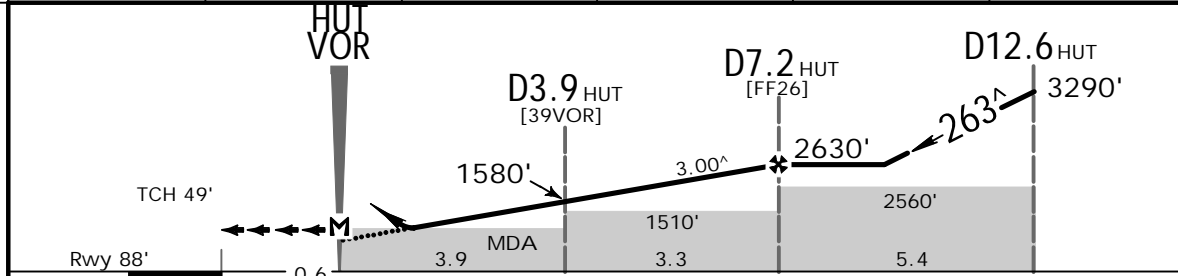
D-ATIS 126.450		SANYA Approach(R) * APP01 127.925 APP02 125.550		FENGHUANG Tower 118.150	*Ground 121.7
VOR HUT 114.7	Final Apch Crs 263 [^]	Procedure Alt D7.2 HUT 2630' (2542')	MDA(H) 1020' (932')	Apt Elev 94' Rwy 88'	
MISSED APCH: Climb STRAIGHT AHEAD to 2470', then turn LEFT and climb to HUT VOR at 4930' or as directed. MAX 205 KT.					
Alt Set: hPa		Rwy Elev: 3 hPa		Trans level: FL 118	
Initial apch MAX 190 KT.		Trans alt: 9850' 1			

FT/METER CONVERSION QNH

10830'	-	3300m
9850'	-	3000m
8860'	-	2700m
5910'	-	1800m
4930'	-	1500m
3940'	-	1200m
3290'	-	1000m
2630'	-	800m
2470'	-	750m
1580'	-	480m



HUT DME	3.0	4.0	5.0	6.0	7.0
ALTITUDE	1300'	1620'	1930'	2250'	2570'



Gnd speed-Kts	70	90	100	120	140	160	HIALS PAPI 205 KT MAX 2470'
Descent Angle 3.00 [^]	372	478	531	637	743	849	

MAP at VOR Standard.		STRAIGHT-IN LANDING RWY 26		CIRCLE-TO-LAND				
CDFA MDA(H) 1020' (932')		ALS out		Not authorized North of runway				
A	4600m	Max Kts	100	MDA(H)	VIS			
B								
C						135	1630' (1536')	5000m
D						180		
		205						

Chart changes since cycle 06-2023

ADD = added chart, REV = revised chart, DEL = deleted chart.

ACT	PROCEDURE IDENT	INDEX	REV DATE	EFF DATE
SANYA, (PHOENIX - ZJSY)				
REV	AIRPORT	10-9	24 Mar 2023	
REV	AIRPORT INFO, HOT SPOTS, ...	10-9A	24 Mar 2023	

TERMINAL CHART CHANGE NOTICES

No Chart Change Notices for Airport ZJSY

Chart Change Notices for Country CHN

Type: Gen Tmnl

Effectivity: Temporary

Begin Date: 20210716

End Date: Until Further Notice

ZSPD: For Wake Turbulence Re-Categorization (RECAT-CN) Separation Standards see ATC pages.