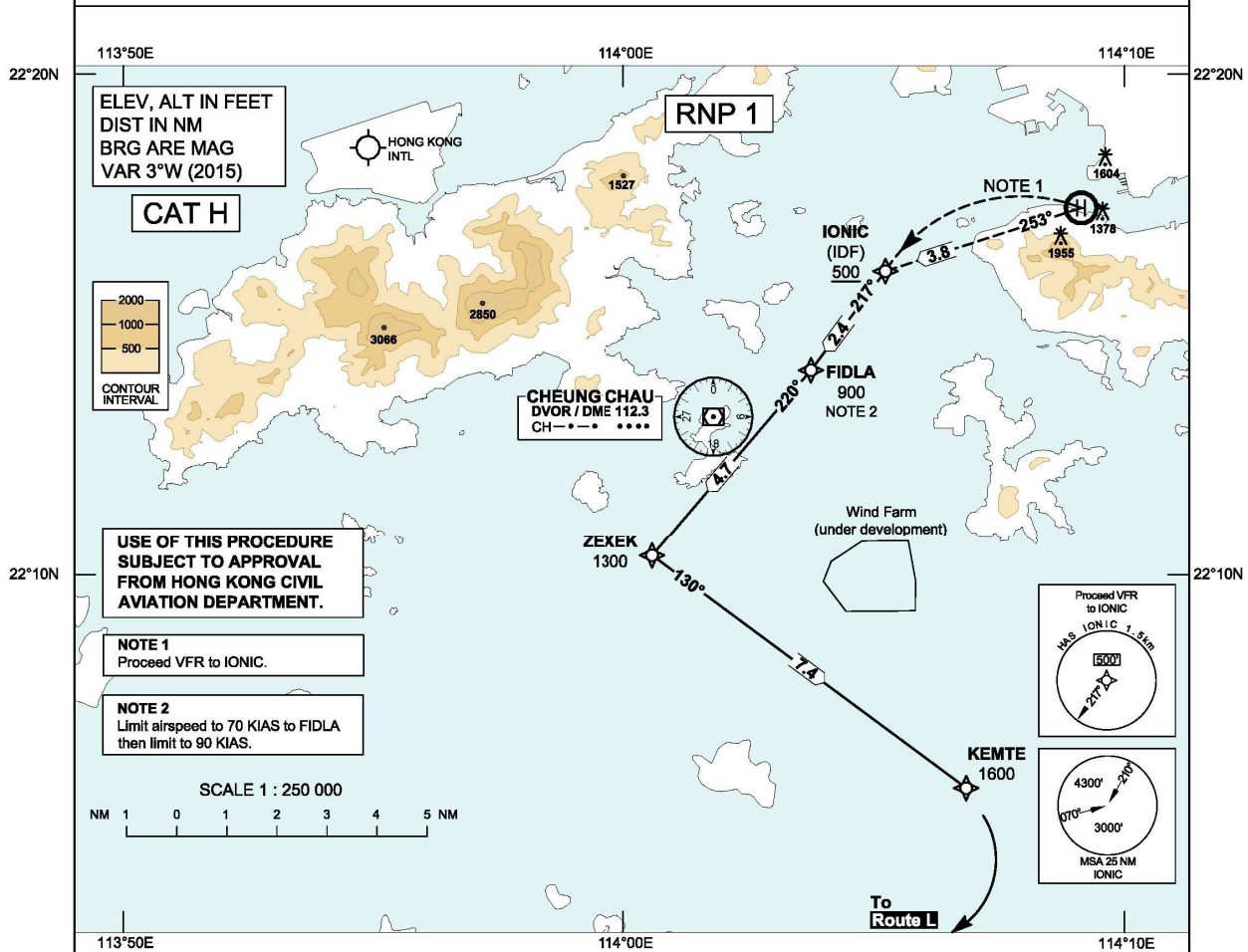


STANDARD DEPARTURE CHART - INSTRUMENT (SID) - ICAO **HELIPORT ELEV 124 FT**
 HEIGHTS RELATED TO HRP ELEV

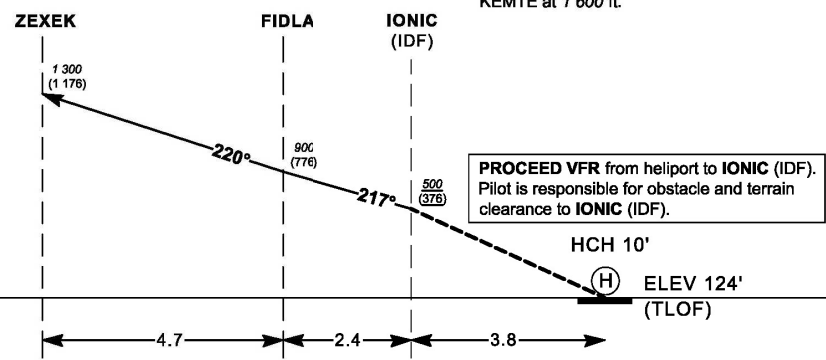
HONG KONG TOWER SOUTH 118.4
 HONG KONG ZONE 120.6
 HONG KONG APPROACH 119.1

SKY SHUTTLE HELIPORT (VHSS) RNAV KEMTE DEPARTURE



AD3-XX_V02_170531zk

AFTER TAKEOFF:
 Climb in VMC and accelerate to V_{mini} to cross IONIC at or above 500 ft prior to entering Instrument Meteorological Conditions. Continue climbing to cross FIDLA at 900 ft. Continue climbing to cross ZEZEK at 1 300 ft. From ZEZEK continue climbing to cross KEMTE at 1 600 ft.



CHANGE: Magnetic Variation.

Climb required	Climb (ft / NM)	Recommended Climb (ft / min at GS)				
		50	60	70	80	90
VFR -> IONIC	99	82	99	115	NOTE 2	
IONIC -> FIDLA	167	139	167	194		
FIDLA -> ZEZEK	85	71	85	99	113	128

SKY SHUTTLE HELIPORT (VHSS)
RNAV KEMTE DEPARTURE

Tabular Description (RNAV KEMTE DEPARTURE)

<i>Serial Number</i>	<i>Path Descriptor</i>	<i>Waypoint Identifier</i>	<i>Fly-over</i>	<i>Course/Track °M(°T)</i>	<i>Magnetic Variation</i>	<i>Distance (NM)</i>	<i>Turn Direction</i>	<i>Altitude (ft)</i>	<i>Speed (kts)</i>	<i>Navigation Specification</i>
01	IF	IONIC	-	-	+3.0	-	-	+500	-	RNP 1
02	TF	FIDLA	-	217 (214)	+3.0	2.4	-	900	-70	RNP 1
03	TF	ZEXEK	-	220 (217)	+3.0	4.7	L	1 300	-90	RNP 1
04	TF	KEMTE	-	130 (127)	+3.0	7.4	-	1 600	-	RNP 1

Waypoint List

Waypoint Identifier	Coordinates	
Sky Shuttle Heliport - VHSS	22°17'19.70"N	114°09'08.40"E
IONIC (IDF)	22°16'04.50"N	114°05'13.93"E
FIDLA	22°14'06.03"N	114°03'44.89"E
ZEXEK	22°10'23.10"N	114°00'34.90"E
KEMTE	22°05'44.56"N	114°06'50.54"E