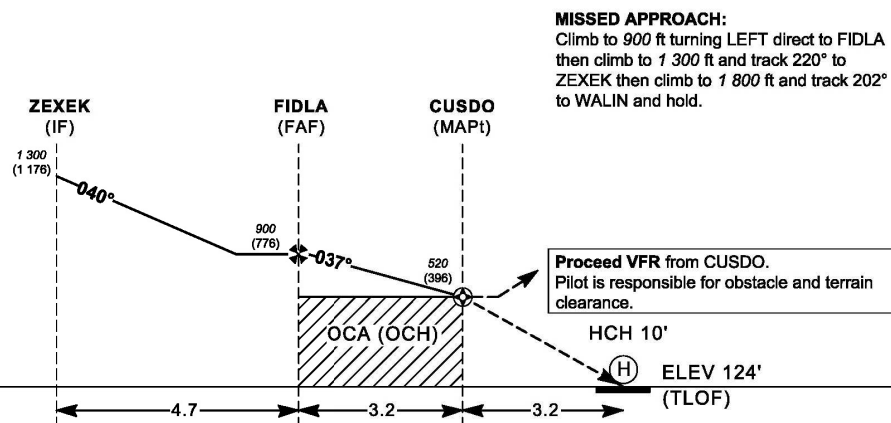


AD3-YY_V02_170612zk



CHANGE: Magnetic Variation.

OCA / OCH	CAT H
LNAV	520 (396)

ADVISORY INFORMATION ONLY				
Ground speed	kt	60	70	80
Rate of descent	ft/min	94	109	125

NOTE:
Local Altimeter setting not available, use Hong Kong International Airport Altimeter setting.

SKY SHUTTLE HELIPORT (VHSS)
RNAV (GNSS) 037

Tabular Description

<i>Serial Number</i>	<i>Path Descriptor</i>	<i>Waypoint Identifier</i>	<i>Fly-over</i>	<i>Course/Track °M(°T)</i>	<i>Magnetic Variation</i>	<i>Distance (NM)</i>	<i>Turn Direction</i>	<i>Altitude (ft)</i>	<i>Speed (kts)</i>	<i>Navigation Specification</i>
01	IF	WALIN	-	-	+3.0	-	-	1 800	-90	RNP APCH
02	TF	ZEXEK	-	022 (019)	+3.0	5.0	-	1 300	-90	RNP APCH
03	TF	FIDLA	-	040 (037)	+3.0	4.7	-	900	-70	RNP APCH
04	TF	CUSDO	Y	037 (034)	+3.0	3.2	L	520	-	RNP APCH
05	CA	-	-	037 (034)	+3.0	1.0	-	+520	-	RNP APCH
06	DF	FIDLA	-	-	+3.0	-	-	900	-	RNP APCH
07	TF	ZEXEK	-	220 (217)	+3.0	4.7	-	1 300	-	RNP APCH
08	TF	WALIN	Y	202 (199)	+3.0	5.0	-	1 800	-70	RNP APCH
09	HM	WALIN	-	022 (019)	+3.0	-	L	-	-90	RNP APCH

Waypoint List

Waypoint Identifier	Coordinates	
WALIN (IAF/MAHF)	22°05'40.10"N	113°58'43.20"E
ZEXEK (IF)	22°10'23.10"N	114°00'34.90"E
FIDLA (FAF)	22°14'06.03"N	114°03'44.89"E
CUSDO (MAPt)	22°16'43.86"N	114°05'43.60"E
Sky Shuttle Heliport - VHSS	22°17'19.70"N	114°09'08.40"E