

List of pages in this Trip Kit

Trip Kit Index

Airport Information For SVMl

Terminal Charts For SVMl

Revision Letter For Cycle 07-2023

Change Notices

Notebook

General Information

Location: MAIQUETIA VEN
ICAO/IATA: SVMl / CCS
Lat/Long: N10° 36.07', W066° 59.47'
Elevation: 234 ft

Airport Use: Public
Daylight Savings: Not Observed
UTC Conversion: +4:00 = UTC
Magnetic Variation: 13.0° W

Fuel Types: 100-130 Octane, Jet A-1
Repair Types: Major Airframe, Major Engine
Customs: Yes
Airport Type: IFR
Landing Fee: No
Control Tower: Yes
Jet Start Unit: No
LLWS Alert: No
Beacon: Yes

Sunrise: 1017 Z
Sunset: 2239 Z

Runway Information

Runway: 09
Length x Width: 9465 ft x 148 ft
Surface Type: concrete
TDZ-Elev: 223 ft
Lighting: Edge

Runway: 10L
Length x Width: 11483 ft x 148 ft
Surface Type: concrete
TDZ-Elev: 234 ft
Lighting: Edge, ALS

Runway: 10R
Length x Width: 8825 ft x 148 ft
Surface Type: asphalt
TDZ-Elev: 220 ft
Lighting: Edge
Displaced Threshold: 623 ft

Runway: 27
Length x Width: 9465 ft x 148 ft
Surface Type: concrete
TDZ-Elev: 105 ft
Lighting: Edge

Runway: 28L
Length x Width: 8825 ft x 148 ft
Surface Type: asphalt
TDZ-Elev: 174 ft
Lighting: Edge

Runway: 28R
Length x Width: 11483 ft x 148 ft
Surface Type: concrete
TDZ-Elev: 157 ft
Lighting: Edge

Communication Information

ATIS: 114.800
ATIS: 132.950
Maiquetia Tower: 118.400
Maiquetia Tower: 118.100
Maiquetia Ground: 121.700
Maiquetia Ground: 121.900
Maiquetia Clearance Delivery: 119.500
Maiquetia Approach: 120.400
Maiquetia Approach: 120.100
Maiquetia Information: 126.900 Flight Info Service

SVM/CCS

JEPPESSEN

MAIQUETIA, VENEZUELA

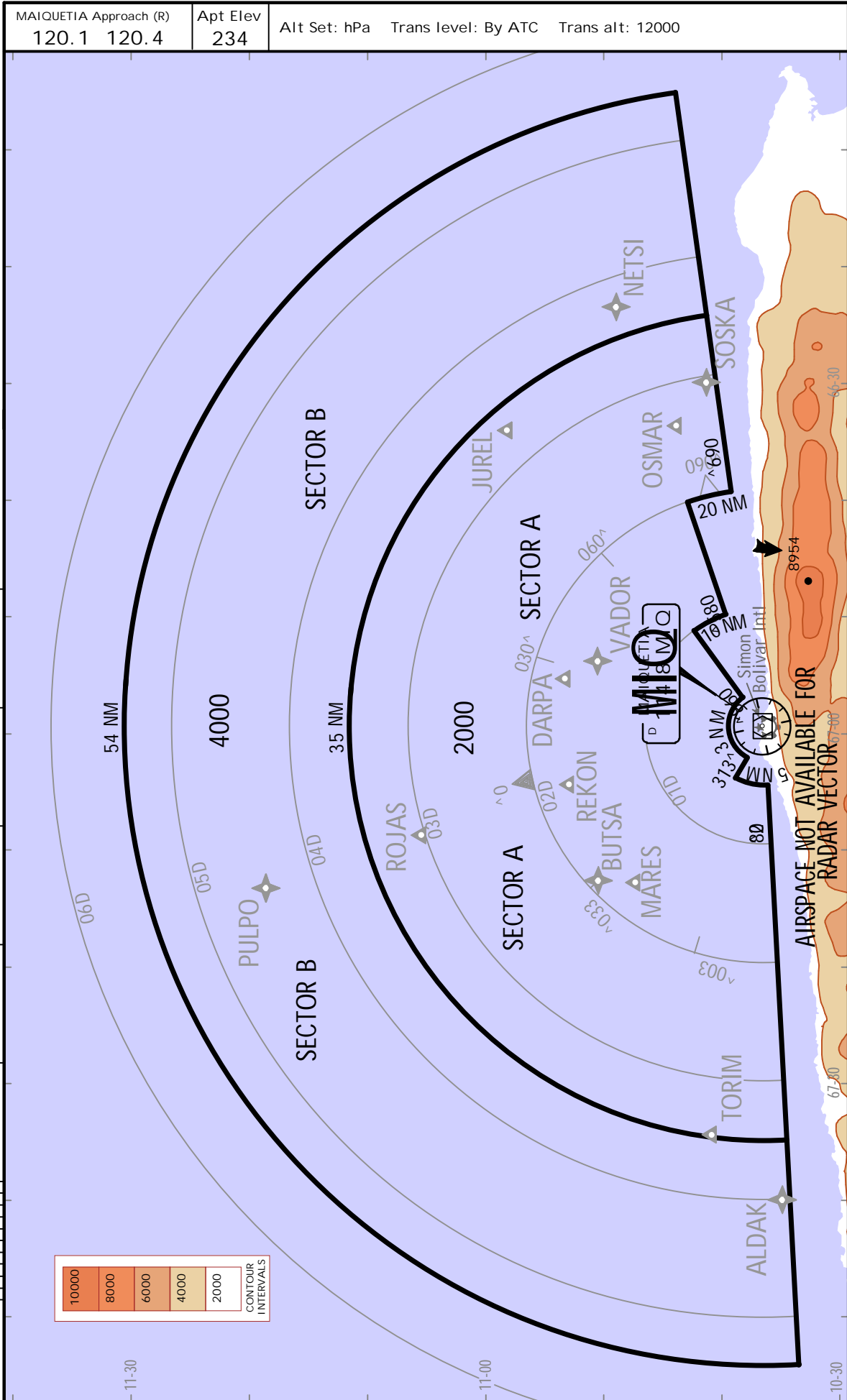
SIMON BOLIVAR INTL

8 JUL 22

10-1R

.Eff.14.Jul.

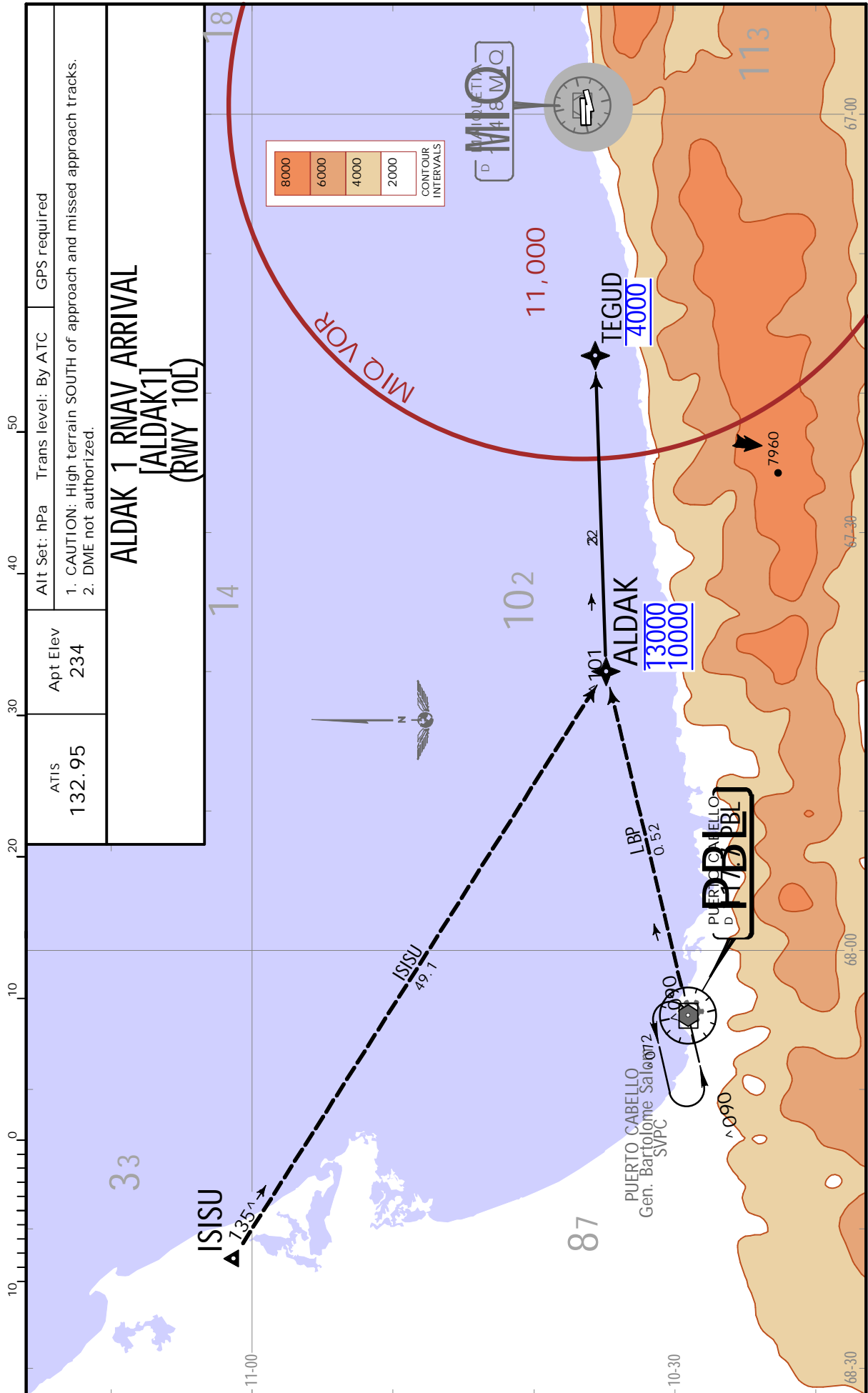
.RADAR.MINIMUM.ALTITUDES.



SVMI/CCS
SIMON BOLIVAR INTL

JEPPesen MAIQUETIA, VENEZUELA
8 JUL 22 (10-2).Eff.14.Jul.

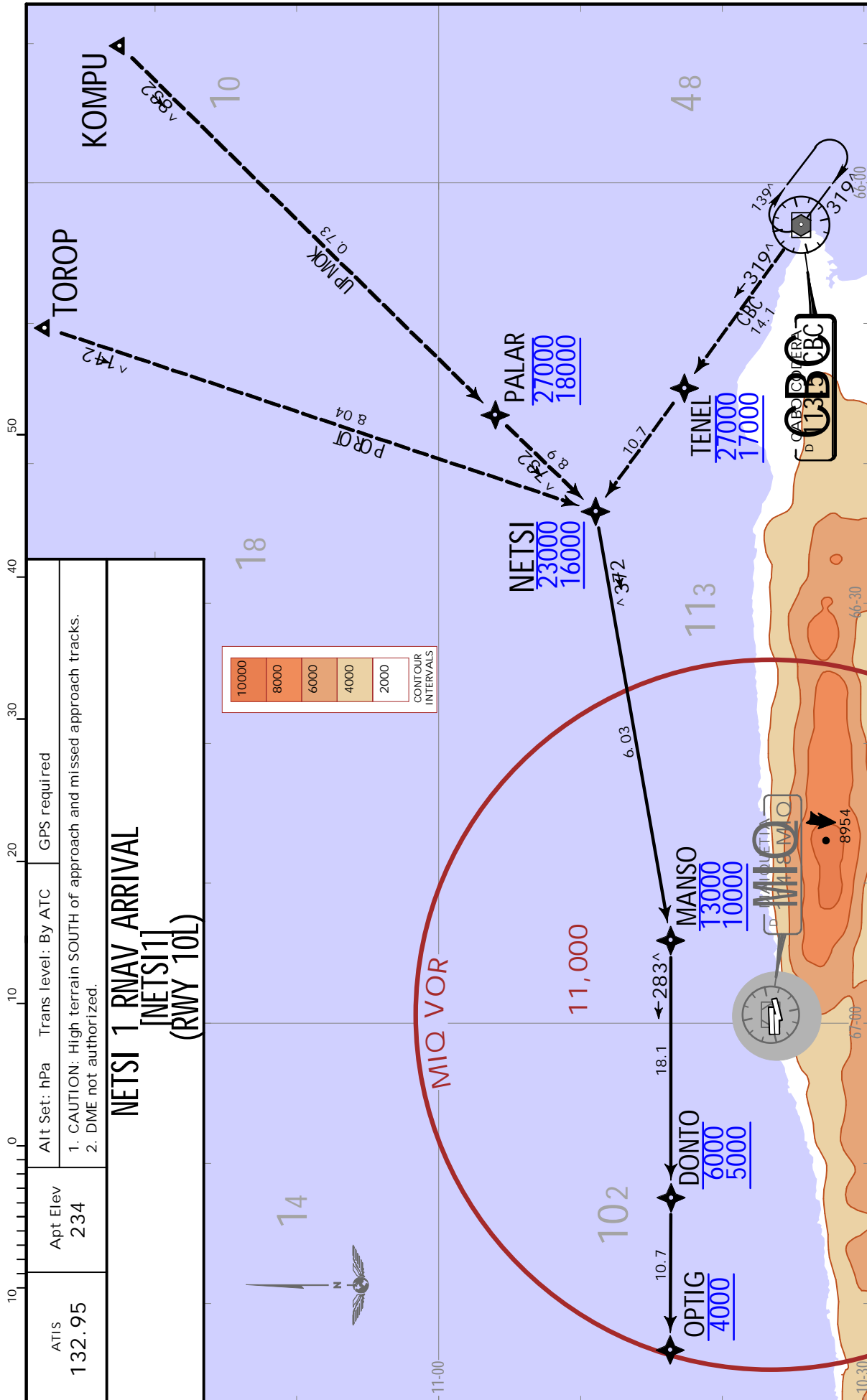
MAIQUETIA, VENEZUELA
.RNAV.STAR.



SVM/CCS
SIMON BOLIVAR INTL

JEPPESEN 8 JUL 22 **10-2A** .Eff.14.Jul.

MAIQUETIA, VENEZUELA
.RNAV.STAR.



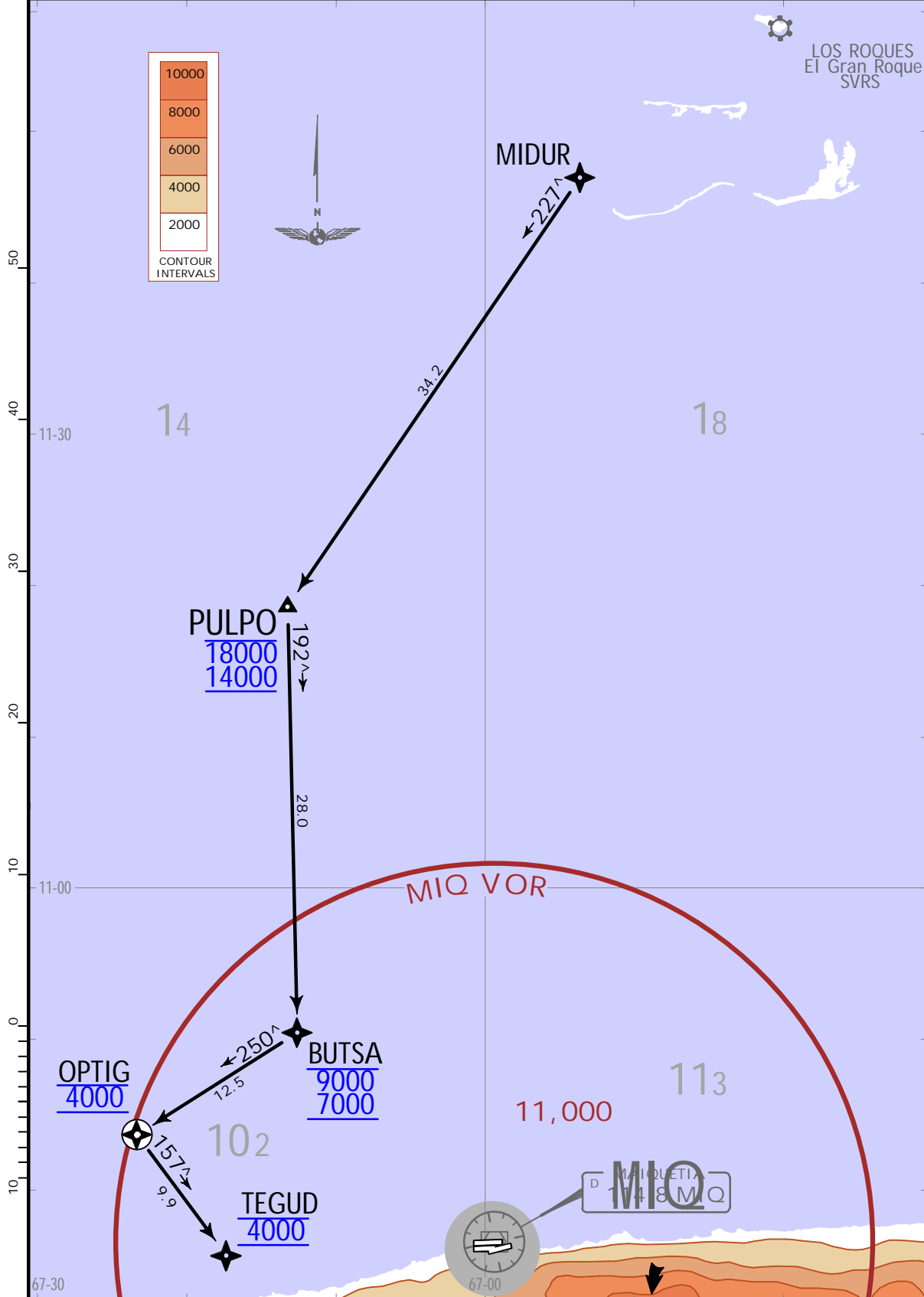
SVMI/CCS
SIMON BOLIVAR INTL

JEPPESEN 8 JUL 22 (10-2B) .Eff.14.Jul.

MAIQUETIA, VENEZUELA
.RNAV.STAR.

ATIS 132.95	Apt Elev 234	Alt Set: hPa Trans level: By ATC GPS required
1. CAUTION: High terrain SOUTH of approach and missed approach tracks. 2. DME not authorized.		

PULPO 1 RNAV ARRIVAL [PULPO1] (RWY 10L)

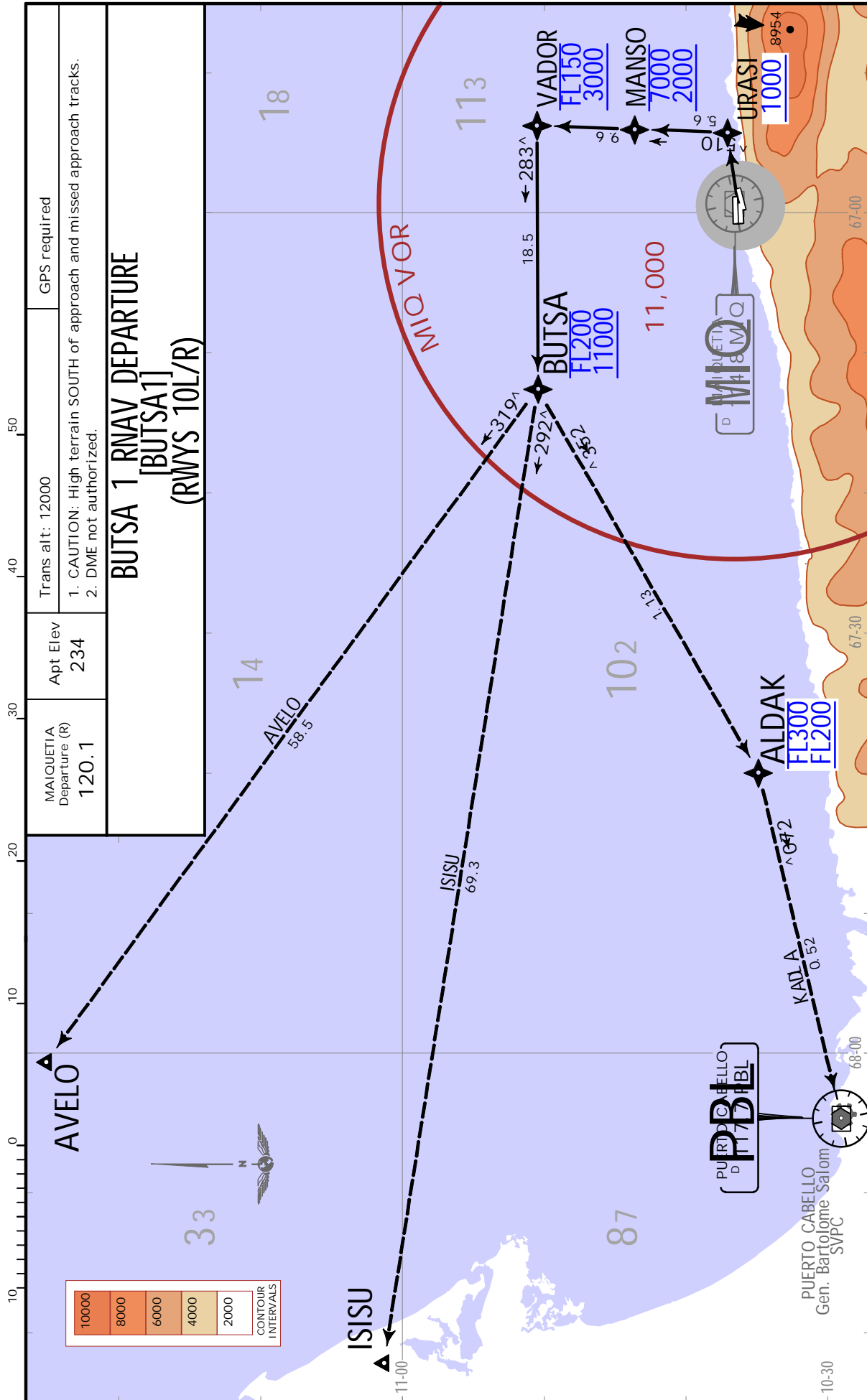


CHANGES: Bearings, wpt OPTIG revised, RWY established.

SVM/CCS
SIMON BOLIVAR INTL

JEPPESEN MAIQUETIA, VENEZUELA
8 JUL 22 (10-3) .Eff.14.Jul.

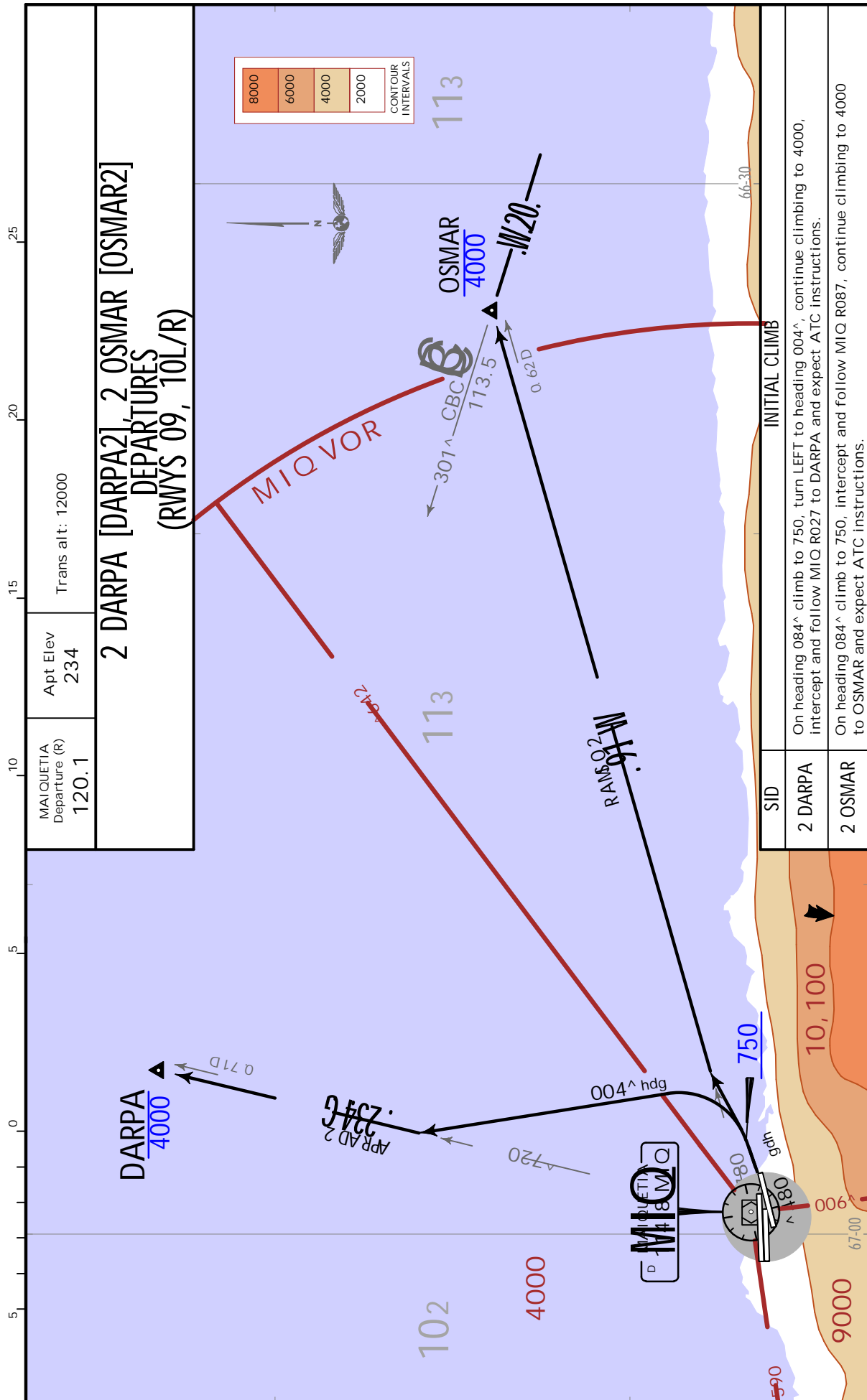
.RNAV.SID.



SVMI/CCS
SIMON BOLIVAR INTL

JEPPESSEN MAIQUETIA, VENEZUELA
8 JUL 22 (10-3A) .Eff.14.Jul.

.SID.



SVM/CCS

SIMON BOLIVAR INTL

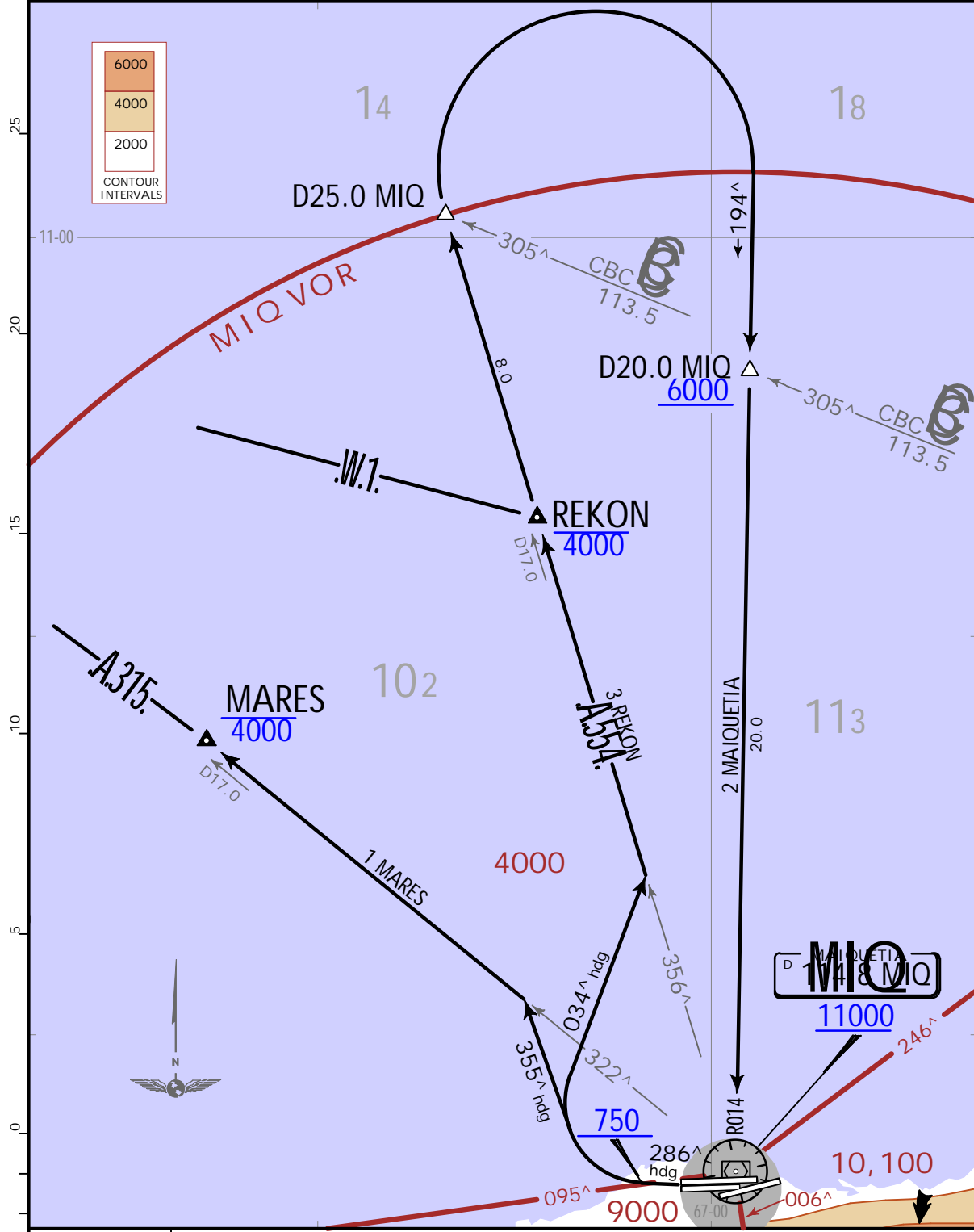
JEPPESEN MAIQUETIA, VENEZUELA

8 JUL 22 (10-3C) .Eff.14.Jul.

.SID.

MAIQUETIA Departure (R) 120.1	Apt Elev 234	Trans alt: 12000
----------------------------------	-----------------	------------------

2 MAIQUETIA [MIQ2], 1 MARES [MARES1], 3 REKON [REKON3] DEPARTURE (RWYS 28L/R)



SID	INITIAL CLIMB
2 MAIQUETIA	On heading 286° climb to 750, turn RIGHT heading 034° to intercept MIQ R356, climb until 4000, at D25.0 MIQ (CBC R305) turn RIGHT intercept MIQ R014 inbound, cross D20.0 MIQ (CBC R305) at or above 6000, cross MIQ VOR at or above 11000 and expect ATC instructions.
1 MARES	On heading 286° climb to 750, turn RIGHT to heading 355°, continue climbing to 4000, intercept and follow MIQ R322 to MARES and expect ATC instructions.
3 REKON	On heading 286° climb to 750, turn RIGHT to heading 034°, continue climbing to 4000, intercept and follow MIQ R356 to REKON and expect ATC instructions.

SVM/CCS

SIMON BOLIVAR INTL

JEPPESEN MAIQUETIA, VENEZUELA

8 JUL 22

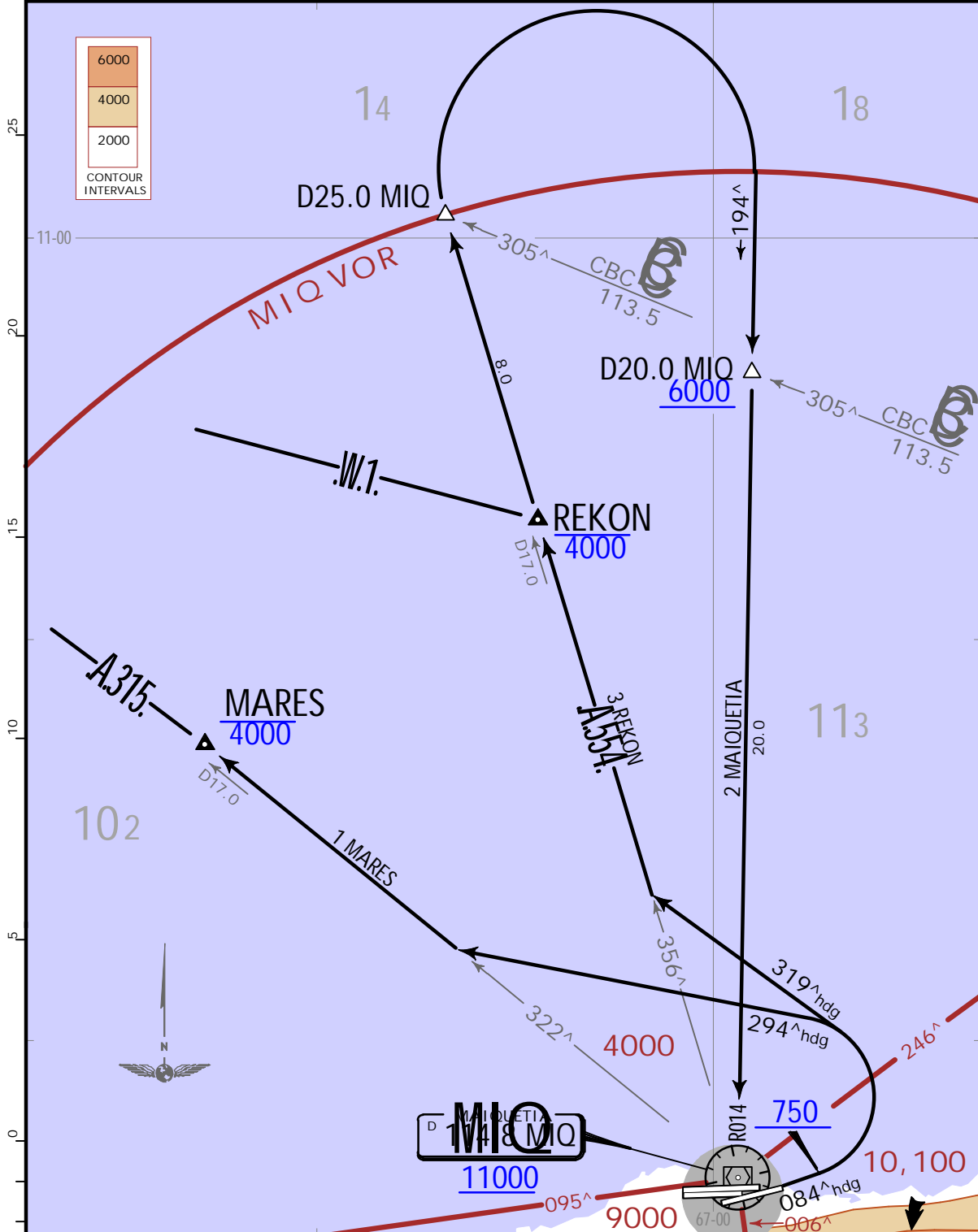
10-3D

.Eff.14.Jul.

.SID.

MAIQUETIA Departure (R) 120.1	Apt Elev 234	Trans alt: 12000
----------------------------------	-----------------	------------------

2 MAIQUETIA [MIQ2], 1 MARES [MARES1], 3 REKON [REKON3] DEPARTURES (RWYS 09, 10L/R)



SID	INITIAL CLIMB
2 MAIQUETIA	On heading 084° climb to 750, turn LEFT heading 319° to intercept MIQ R356, climb until 4000, at D25.0 MIQ (CBC R305) turn RIGHT intercept MIQ R014 inbound, cross D20.0 MIQ (CBC R305) at or above 6000, cross MIQ VOR at or above 11000 and expect ATC instructions.
1 MARES	On heading 084° climb to 750, turn LEFT to heading 294°, continue climbing to 4000, intercept and follow MIQ R322 to MARES and expect ATC instructions.
3 REKON	On heading 084° climb to 750, turn LEFT to heading 319°, continue climbing to 4000, intercept and follow MIQ R356 to REKON and expect ATC instructions.

CHANGES: Bearings, RWY established, MSA revised.

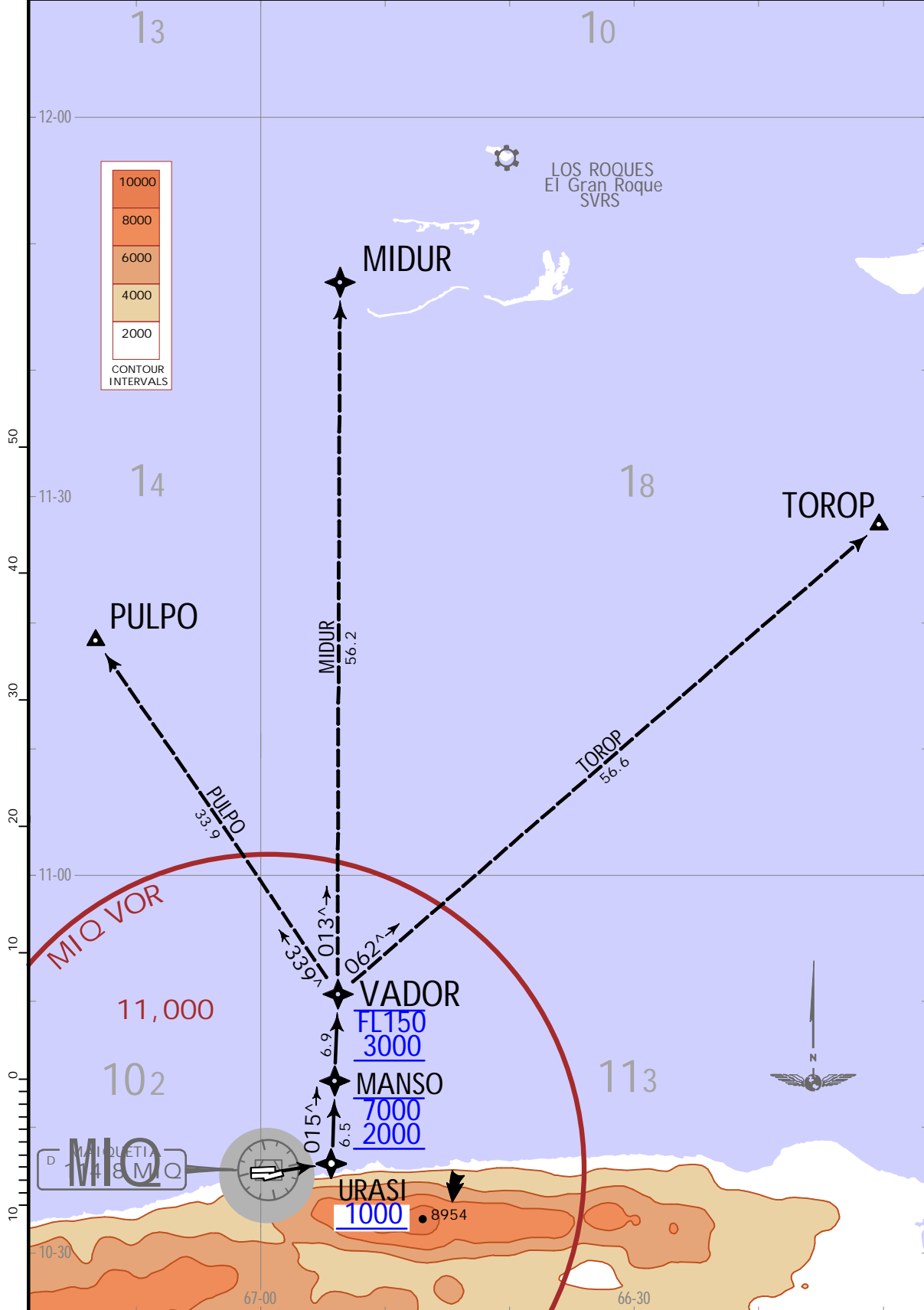
SVMI/CCS
SIMON BOLIVAR INTL

JEPPESEN 8 JUL 22 **10-3F** .Eff.14.Jul.

MAIQUETIA, VENEZUELA
.RNAV.SID.

MAIQUETIA Departure (R) 120.1	Apt Elev 234	Trans alt: 12000	GPS required
		DME not authorized.	

VADOR 1 [VADOR1] RNAV DEPARTURE (RWYS 10L/R)



CHANGES: Bearings, RWY established, waypoint URASI flyby.

SVM/CCS

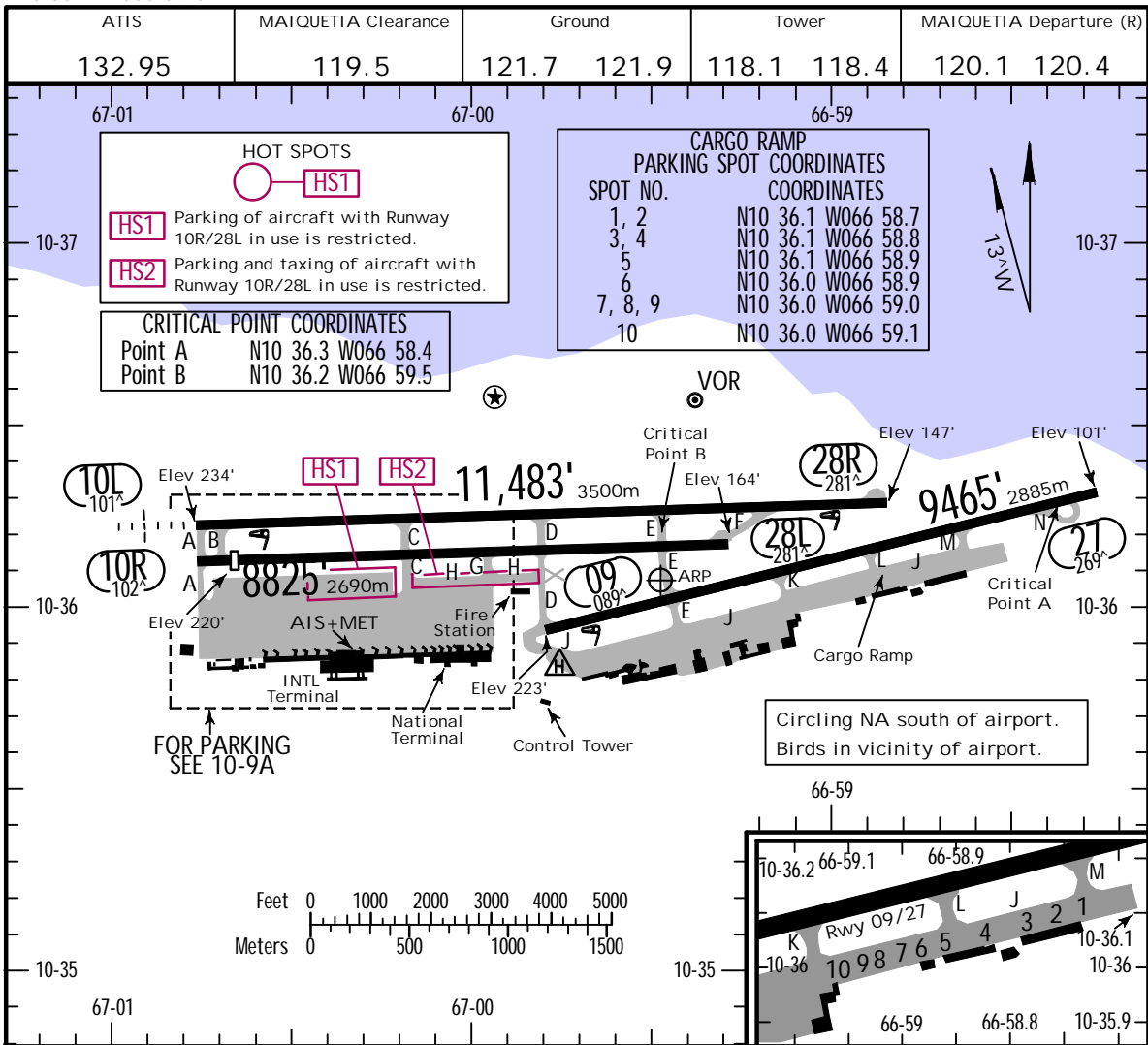
Apt Elev **234**
N10 36.1 W066 59.5

JEPPESSEN

MAIQUETIA, VENEZUELA

22 JUL 22 **(10-9)**

SIMON BOLIVAR INTL



ADDITIONAL RUNWAY INFORMATION

RWY		USABLE LENGTHS			WIDTH
		Threshold	Landing Beyond Glide Slope	TAKE-OFF	
09 27	MIRL	NA		NA	148' 45m
10L 28R	MIRL ALS PAPI-L (angle 3.0°)		10,444' 3183m		148' 45m
10R 28L	MIRL PAPI-L (angle 3.0°)	8202' 2500m			148' 45m
		1			

1 LDA: 8202' 2500m.

.Std.

TAKE-OFF

RL & RCLM	RL	RL or RCLM	Adequate Vis Ref	
DAY	NIGHT	DAY	DAY	NIGHT
R300m		R400m	R/V500m	NA

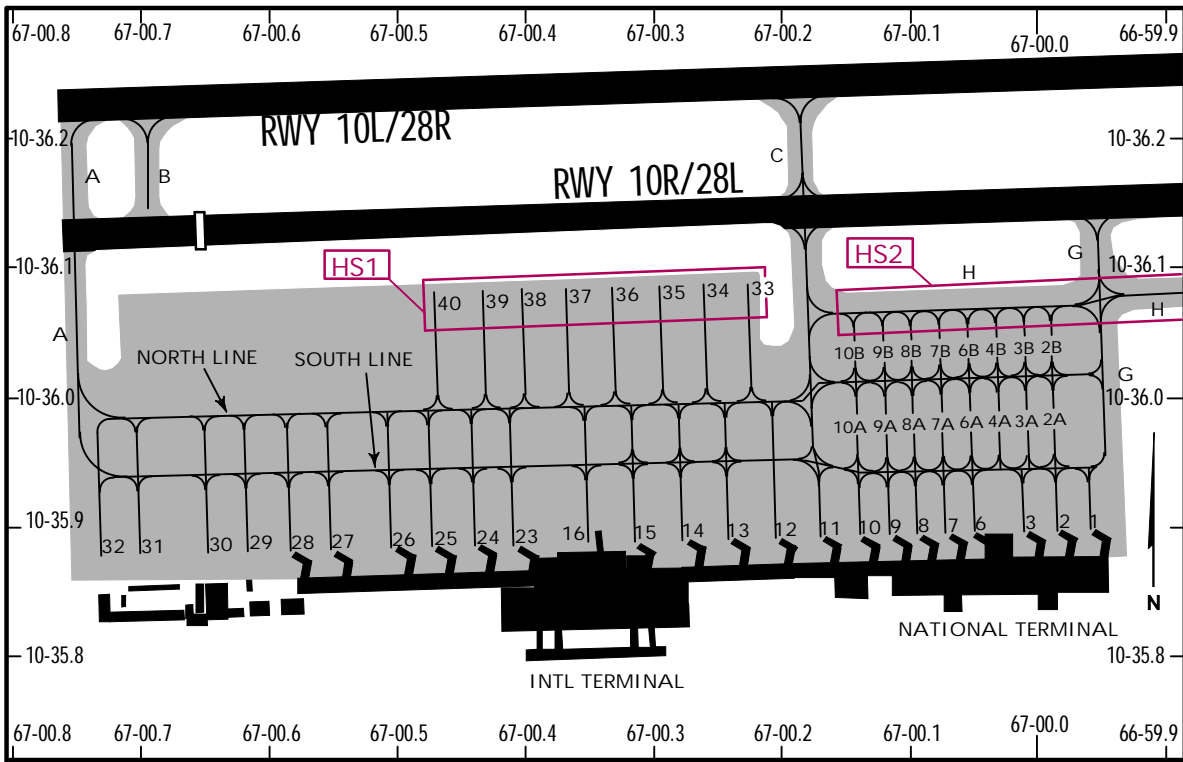
SVM/CCS

JEPPESEN

MAIQUETIA, VENEZUELA

22 JUL 22 (10-9A)

SIMON BOLIVAR INTL



INTERNATIONAL PARKING STAND COORDINATES

STAND No.	COORDINATES
1 thru 3	N 10 35.9 W 67 00.0
6 thru 10	N 10 35.9 W 67 00.1
11 thru 13	N 10 35.9 W 67 00.2
14, 15	N 10 35.9 W 67 00.3
16, 23, 24	N 10 35.9 W 67 00.4
25, 26	N 10 35.9 W 67 00.5
27 thru 30	N 10 35.9 W 67 00.6
31, 32	N 10 35.9 W 67 00.7
33 thru 35	N 10 36.1 W 67 00.2
36	N 10 36.1 W 67 00.3
37 thru 39	N 10 36.1 W 67 00.4
40	N 10 36.1 W 67 00.5
2A thru 4A	N 10 36.0 W 67 00.0
2B thru 4B	N 10 36.0 W 67 00.0
6A thru 10A	N 10 36.0 W 67 00.1
6B thru 10B	N 10 36.0 W 67 00.1

Notes

Aircraft parking in INTL Apron remote north, position nose of aircraft facing north.

HOT SPOTS



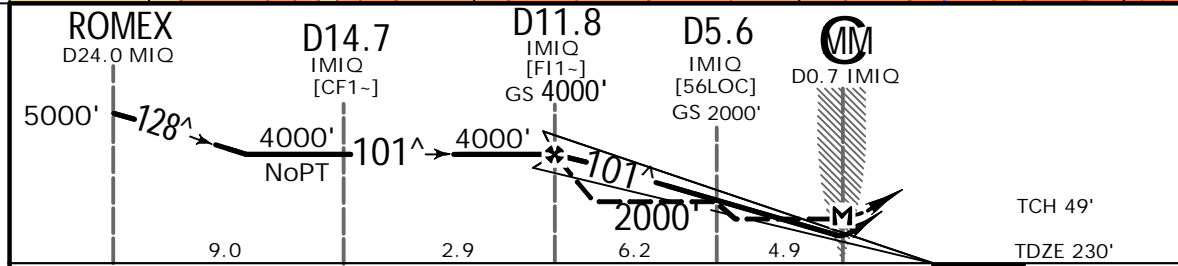
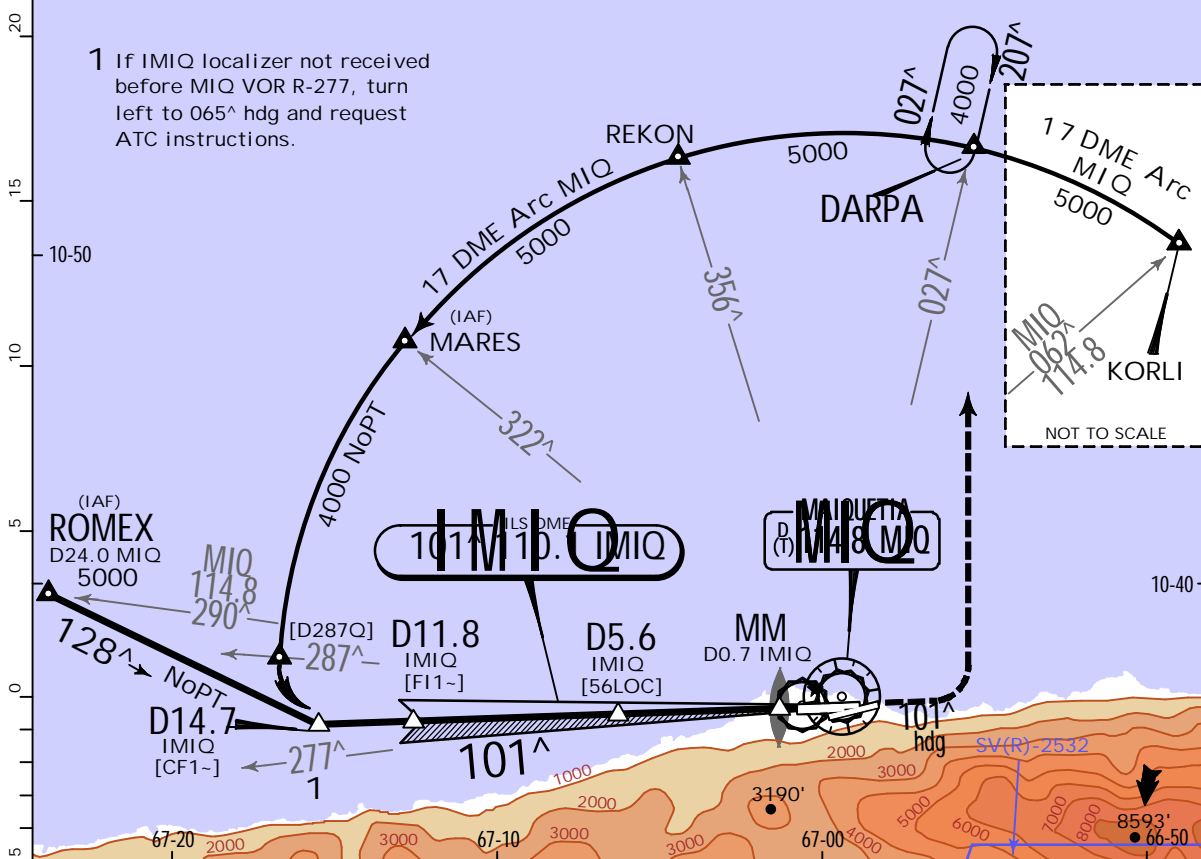
- HS1** Parking of aircraft with Runway 10R/28L in use is restricted.
- HS2** Parking and taxing of aircraft with Runway 10R/28L in use is restricted.

SVM/CCS
SIMON BOLIVAR INTL

JEPPesen 8 JUL 22 (11-1).Eff.14.Jul.

MAIQUETIA, VENEZUELA
ILS DME Rwy 10L

ATIS 132.95		MAIQUETIA Approach (R) 120.1 120.4		MAIQUETIA Tower 118.1 118.4		Ground 121.7 121.9	
LOC IMIQ 110.1	Final Apch Crs 101^	D11.8 IMIQ 4000' (3770')	ILS DA(H) 464' (234')	Apt Elev 234' TDZE 230'			
MISSED APCH: Climb to 800' on 101^ heading, then turn LEFT climbing to 4000' direct to DARPA and hold or as directed by ATC.						MSA MIQ VOR	
Alt Set: hPa		TDZ Elev: 8 hPa		Trans level: By ATC		Trans alt: 12000'	
1. DME required. 2. Dual VOR receivers required.							



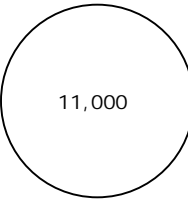
Gnd speed-Kts	70	90	100	120	140	160		800' on 101^ hdg then 4000' LT	
GS	3.00^	372	478	531	637	849			
MAP at D0.7 IMIQ									
FAF to MAP	4.9	4:12	3:16	2:56	2:27	1:50			

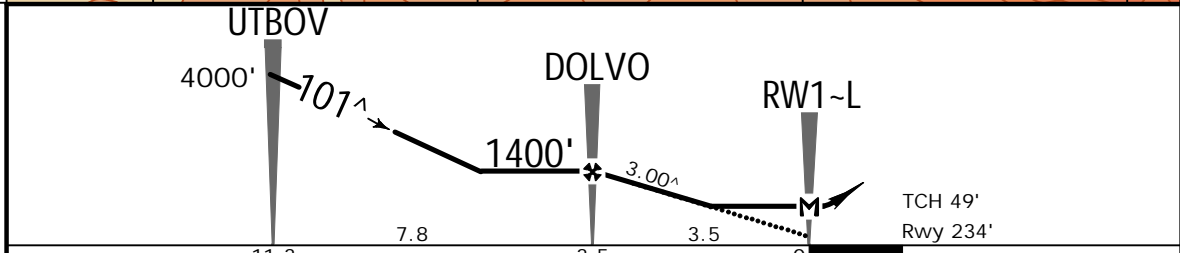
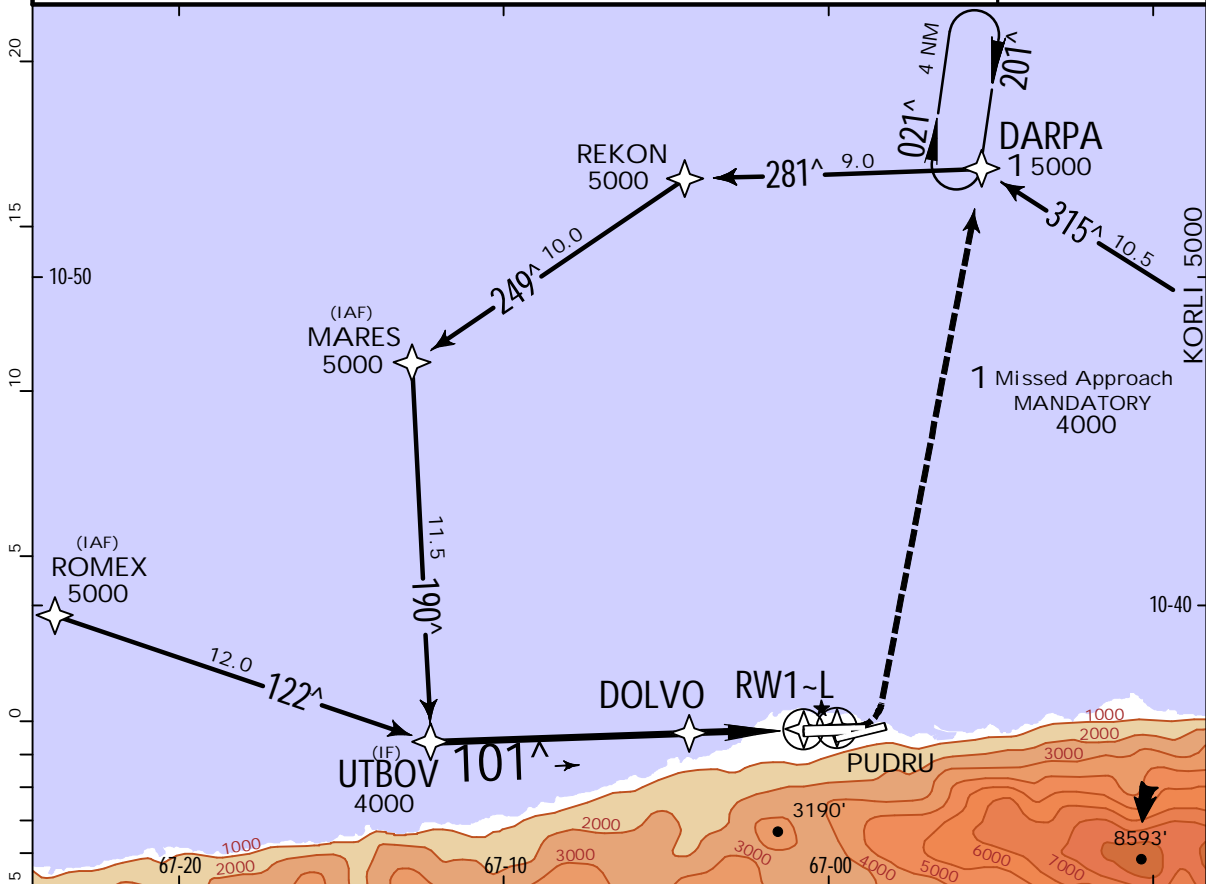
.State.		STRAIGHT-IN LANDING		CIRCLE-TO-LAND Not Authorized South of Rwy 10L-28R Not Authorized Landing Rwy 09	
ILS DA(H) 464' (234')		LOC (GS out) MDA(H) 770' (536')		Max Kts. _____	
FULL	ALS out	V1.6 km	V2.4 km	800' (566') V1.6 km	
A				100	
B				135	
C	V800m	V1200m	V2.4 km	180	800' (566') V2.4 km
D			V2.8 km	205	800' (566') V3.6 km

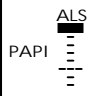
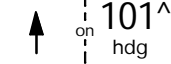
SVM/CCS MISSED APCH CLIMB
GRADIENT MIN 460'/NM
SIMON BOLIVAR INTL

JEPPESEN MAIQUETIA, VENEZUELA
8 JUL 22 (12-1) .Eff.14.Jul.

RNP Y Rwy 10L

ATIS 132.95		MAIQUETIA Approach (R) 120.1 120.4		MAIQUETIA Tower 118.1 118.4		Ground 121.7 121.9		
RNAV	Final Apch Crs 101[^]	DOLVO 1400' (1166')	LNAV MDA(H) 870' (636')	Apt Elev 234' Rwy 234'		 11,000 MSA APT		
MISSED APCH: Climb on heading 101 [^] direct to PUDRU, then turn LEFT direct to DARPA at 4000' and hold. CAUTION: Missed approach requires a minimum climb of 460'/NM to 2240'.								
Alt Set: hPa		Rwy Elev: 9 hPa	Trans level: By ATC		Trans alt: 12000'			
1. GPS required. 2. CAUTION: High terrain south of approach and missed approach tracks. 3. When local altimeter setting not received, procedure not applicable. 4. DME/DME not authorized.								

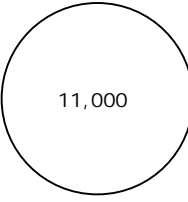


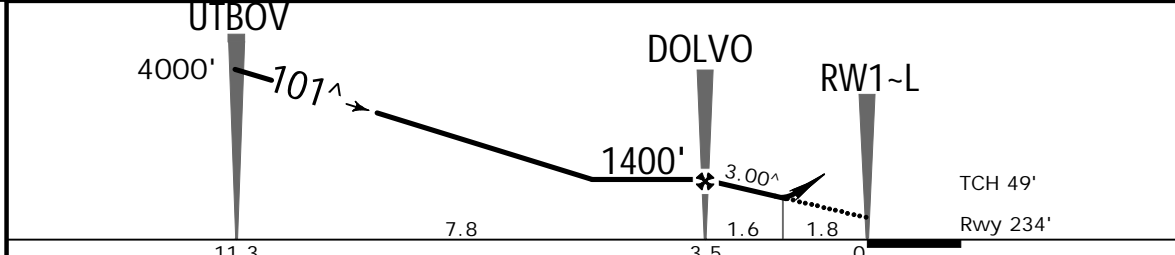
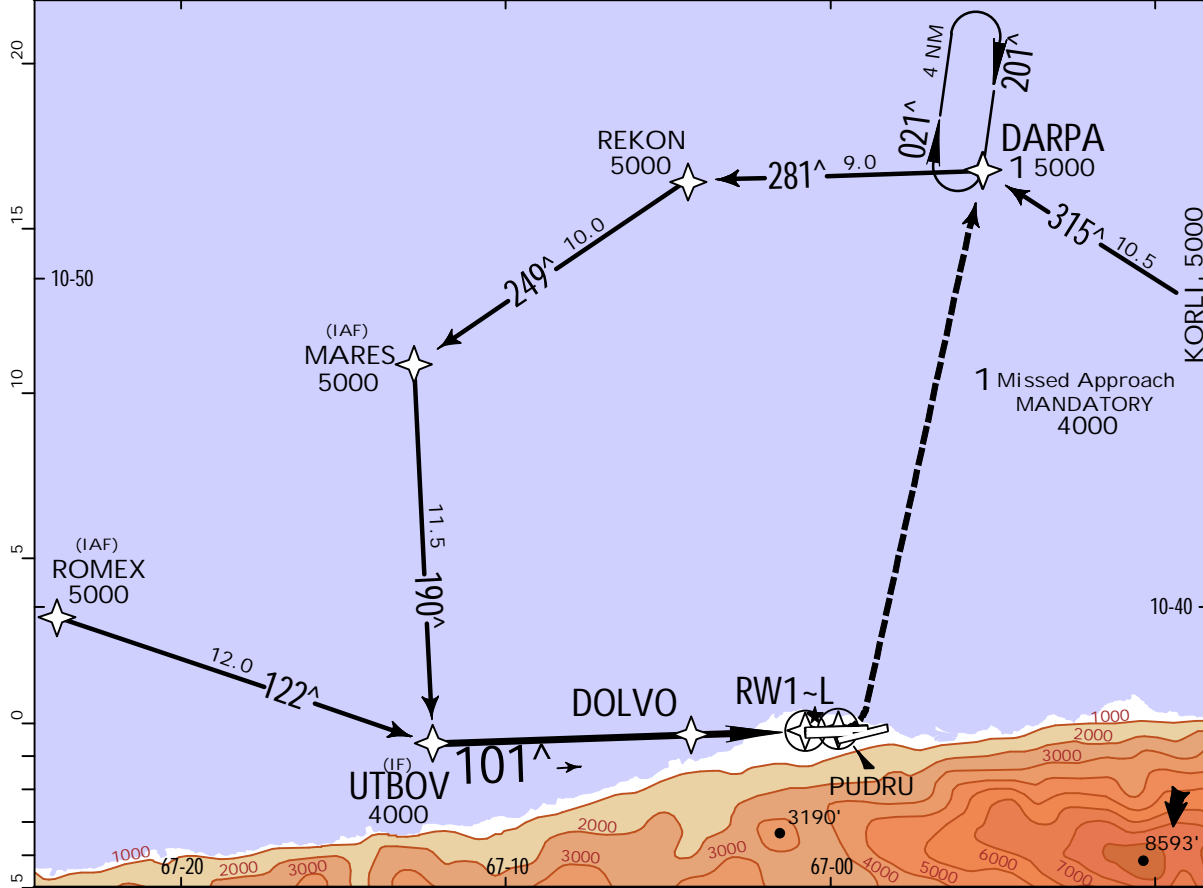
Gnd speed-Kts	70	90	100	120	140	160	 ALS PAPI	 on 101 [^] hdg
Descent Angle	3.00 [^]	372	478	531	637	743		
MAP at RW1-L								



.State. STRAIGHT-IN LANDING
LNAV
MDA(H) **870'** (636')

A		ALS out
B		
C	V2.2km	V2.8km
D		

SVM/CCS MISSED APCH CLIMB GRADIENT MIN 460'/NM **JEPPESEN** MAIQUETIA, VENEZUELA
 SIMON BOLIVAR INTL (12-2) 8 JUL 22 Eff. 14 Jul. RNP Z Rwy 10L (LNAV/VNAV)

ATIS 132.95		MAIQUETIA Approach (R) 120.1 120.4		MAIQUETIA Tower 118.1 118.4		Ground 121.7 121.9		
RNAV	Final Apch Crs 101[^]	DOLVO 1400' (1166')	LNAV/VNAV DA(H) 870' (636')	Apt Elev 234' Rwy 234'		 11,000 MSA APT		
MISSED APCH: Climb on heading 101 [^] direct to PUDRU, then turn LEFT direct to DARPA at 4000' and hold. CAUTION: Missed approach requires a minimum climb of 460' /NM to 2240'.								
Alt Set: hPa Rwy Elev: 9 hPa Trans level: By ATC Trans alt: 12000' 1. GPS required. 2. CAUTION: High terrain south of approach and missed approach tracks. 3. When local altimeter setting not received, procedure not applicable. 4. DME/DME not authorized.								



Gnd speed-Kts	70	90	100	120	140	160	ALS  PAPI	 on 101[^] hdg
Glide Path Angle	3.00 [^]	372	478	531	637	743		

.State. STRAIGHT-IN LANDING LNAV/VNAV DA(H) **870'** (636') ALS out

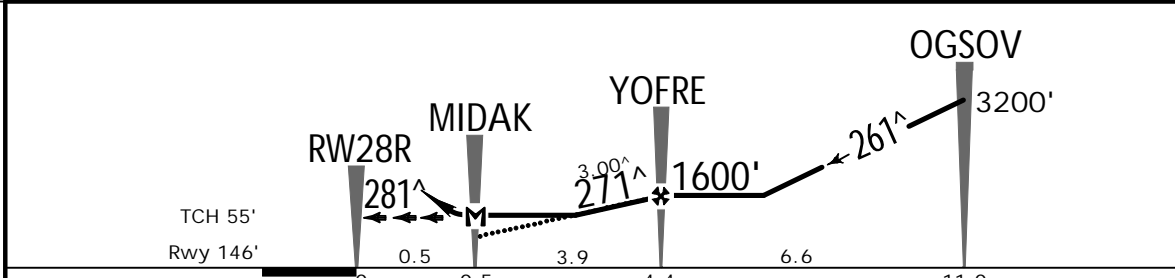
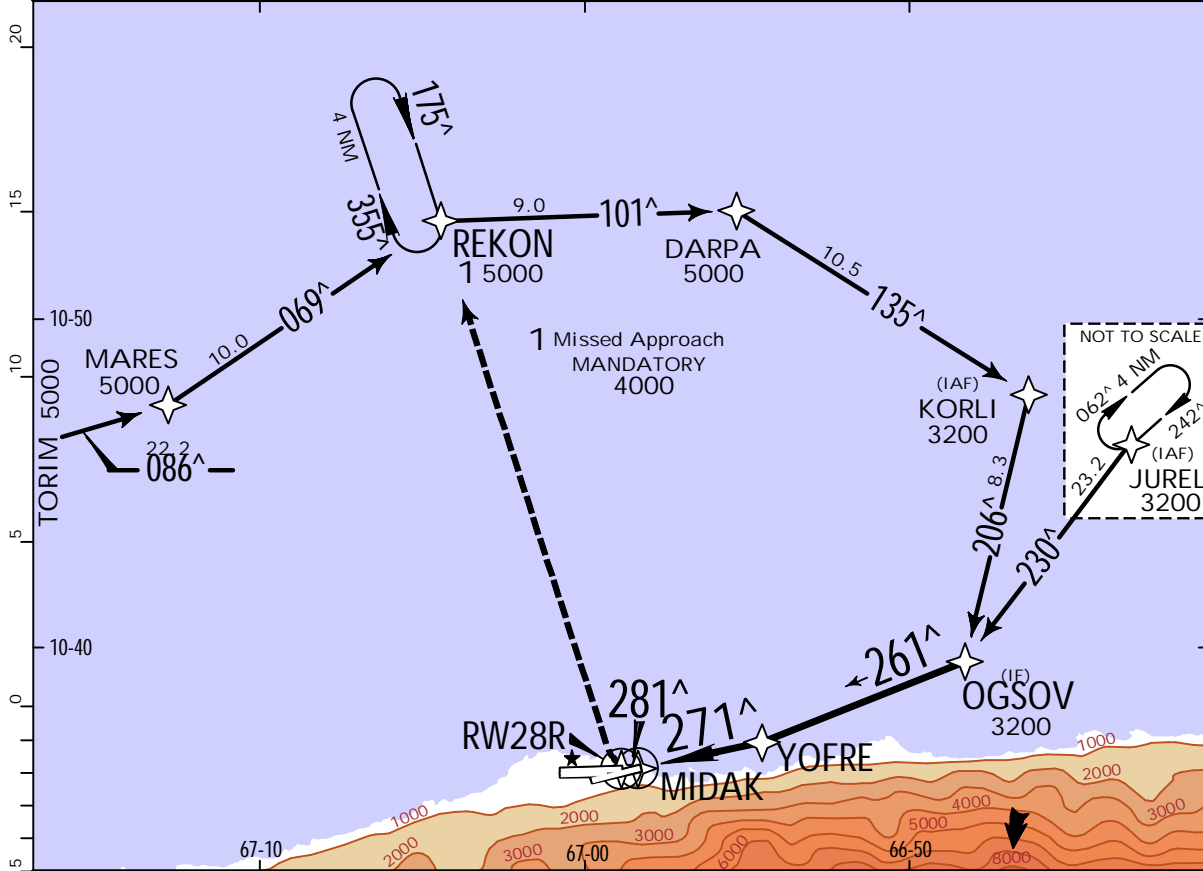
A	V2.2km	V2.8km
B		
C		
D		

SVMI/CCS
SIMON BOLIVAR INTL

JEPPESEN
8 JUL 22 (12-3) .Eff.14.Jul.

MAIQUETIA, VENEZUELA
RNP Y Rwy 28R

ATIS 132.95		MAIQUETIA Approach (R) 120.1 120.4		MAIQUETIA Tower 118.1 118.4		Ground 121.7 121.9		
RNAV	Final Apch Crs 271 [^]	YOFRE 1600' (1454')	LNNAV MDA(H) 1110' (964')	Apt Elev 234' Rwy 146'		11,000 MSA APT		
MISSED APCH: Turn RIGHT direct REKON at 4000' and hold.								
Alt Set: hPa Rwy Elev: 5 hPa Trans level: By ATC Trans alt: 12000' 1. GPS required. 2. When local altimeter setting not received, procedure not applicable. 3. DME/DME not authorized. 4. High terrain south of approach course, remain at or above the depicted VPA during the approach due to terrain in this area.								



Gnd speed-Kts	70	90	100	120	140	160	PAPI-L	RT	D	REKON
Descent Angle	3.00 [^]	372	478	531	637	849				
MAP at MIDAK										

State. STRAIGHT-IN LANDING
LNNAV
MDA(H) 1110' (964')

A	V3.8km
B	
C	
D	

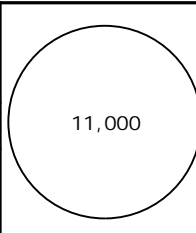
SVMI/CCS

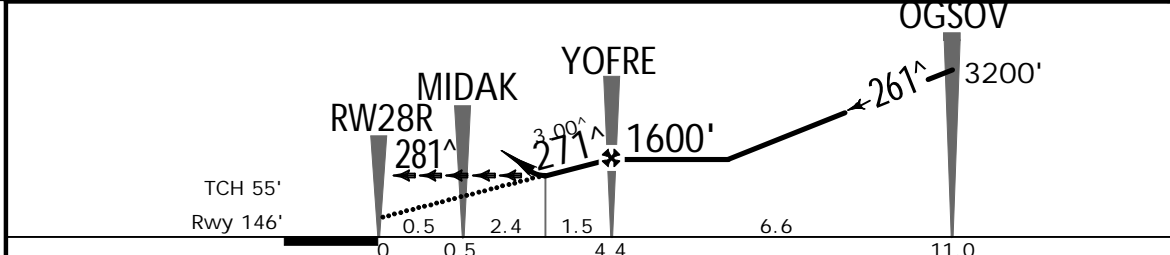
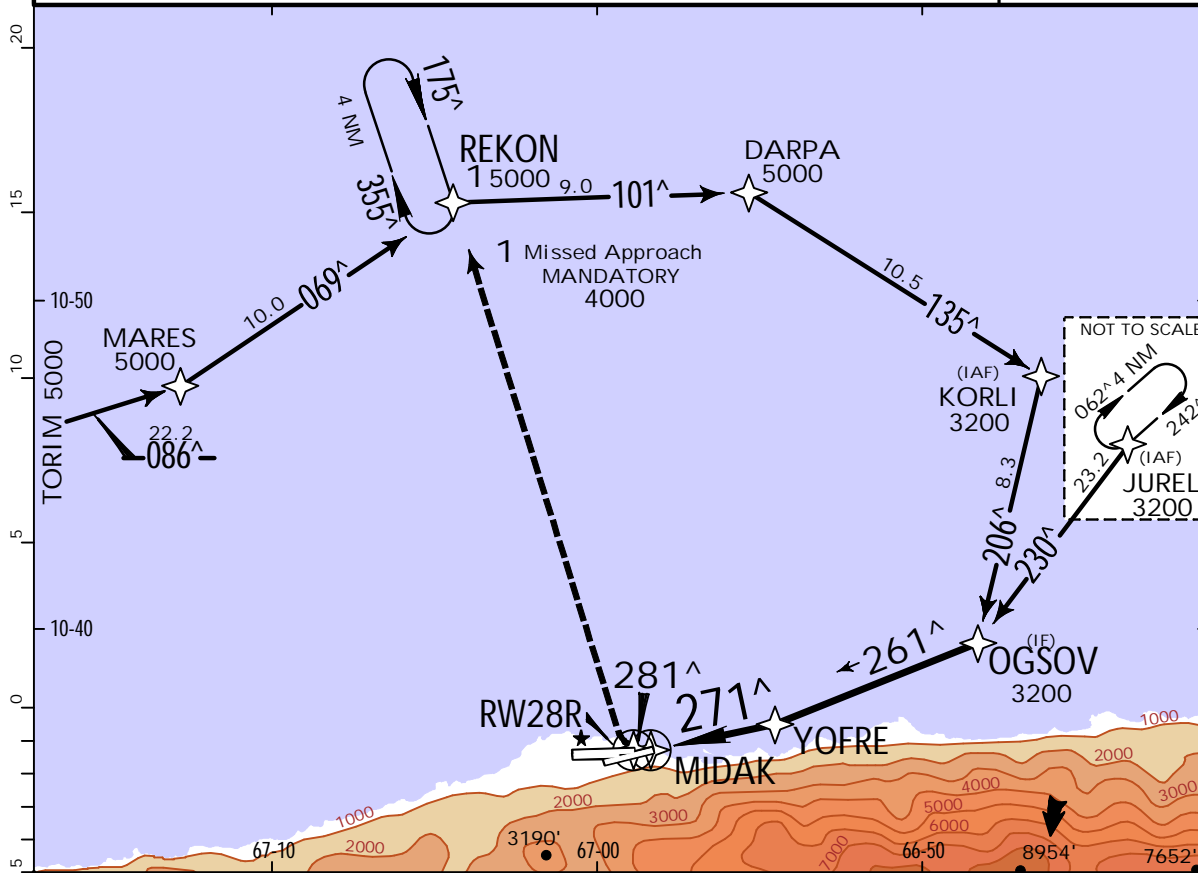
SIMON BOLIVAR INTL


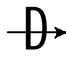
JEPPESEN

8 JUL 22
Eff. 14 Jul. (12-4)

MAIQUETIA, VENEZUELA
RNP Z Rwy 28R (LNAV/VNAV)

ATIS 132.95		MAIQUETIA Approach (R) 120.1 120.4		MAIQUETIA Tower 118.1 118.4		Ground 121.7 121.9		
RNAV	Final Apch Crs 271 [^]	YOFRE 1600' (1454')	LNAV/VNAV DA(H) 1108' (962')	Apt Elev 234' Rwy 146'				
MISSED APCH: Turn RIGHT direct REKON at 4000' and hold.								
Alt Set: hPa Rwy Elev: 5 hPa Trans level: By ATC Trans alt: 12000'								
1. GPS required. 2. When local altimeter setting not received, procedure not applicable. 3. DME/DME not authorized. 4. High terrain south of approach course remain at or above the depicted VPA during the approach due to terrain in this area.							MSA APT	



Gnd speed-Kts	70	90	100	120	140	160	PAPI-L	 	REKON
Glide Path Angle	3.00 [^]	372	478	531	637	743			

.State. STRAIGHT-IN LANDING
LNAV/VNAV
DA(H) 1108' (962')

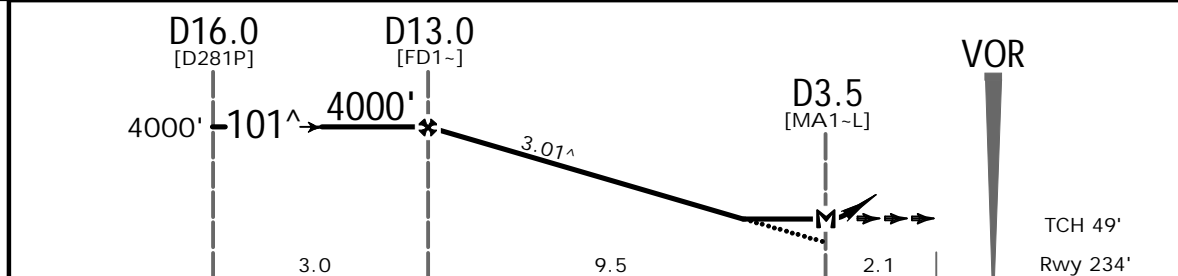
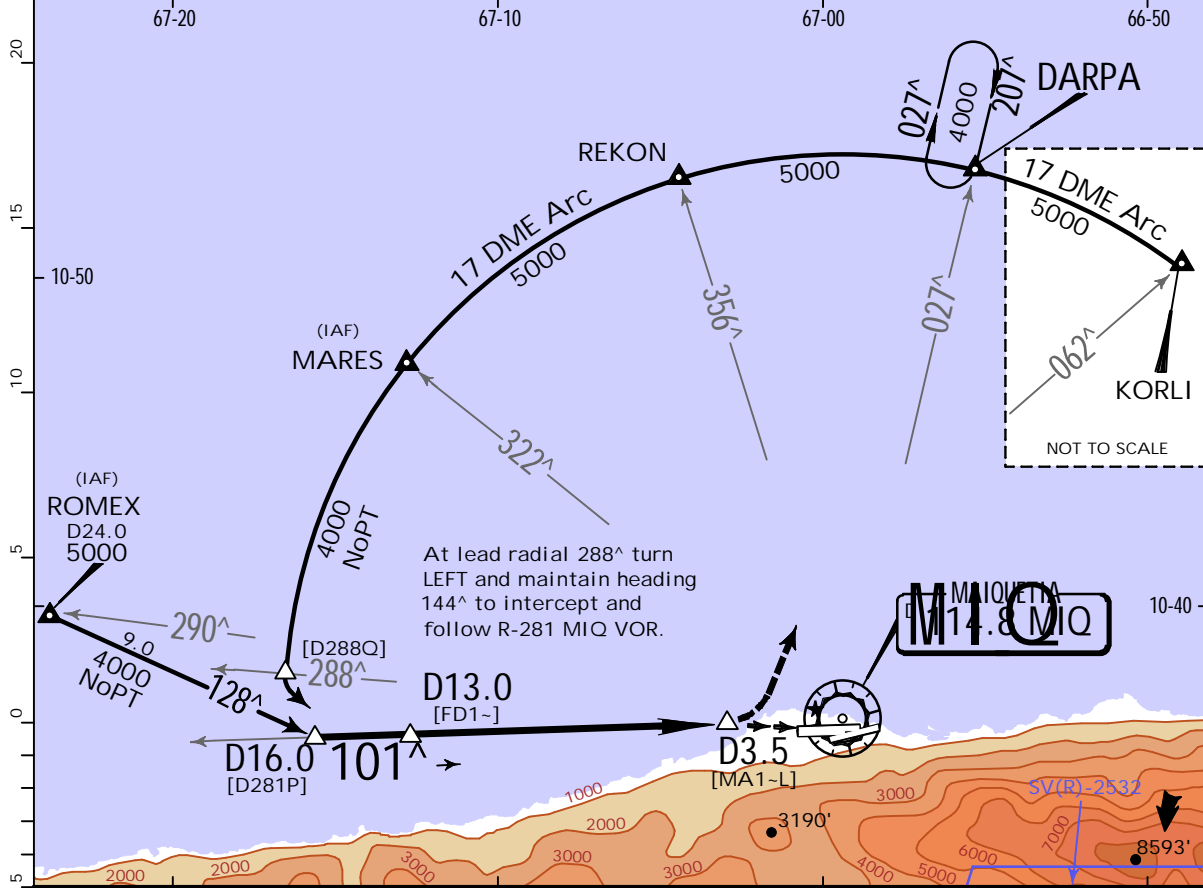
A	V3.8km
B	
C	
D	

SVM/CCS
SIMON BOLIVAR INTL

JEPPESEN
17 FEB 23 (13-1) .Eff.23.Feb.

MAIQUETIA, VENEZUELA
VOR DME Rwy 10L

ATIS 132.95		MAIQUETIA Approach (R) 120.1 120.4		MAIQUETIA Tower 118.1 118.4		Ground 121.7 121.9	
VOR MIQ 114.8	Final Apch Crs 101[^]	D13.0 4000' (3766')	MDA(H) 910' (676')	Apt Elev 234' Rwy 234'			
MISSED APCH: Turn LEFT direct to DARPA climbing to 4000' and hold or as directed by ATC.							
Alt Set: hPa	Rwy Elev: 9 hPa	Trans level: By ATC		Trans alt: 12000'		MSA MIQ VOR	



Gnd speed-Kts	70	90	100	120	140	160	ALS PAPI	4000' LT	DARPA
Descent Angle	3.01 [^]	373	479	532	639	852			
MAP at D3.5									
D13.0 to MAP	9.5	8:09	6:20	5:42	4:45	4:04			

.State.		STRAIGHT-IN LANDING		CIRCLE-TO-LAND Not Authorized South of Rwy 10L-28R Not Authorized Landing Rwy 09	
		MDA(H) 910' (676')		Max Kts. MDA(H)	
A	V1.6km	ALS out V3.1km		100	910' (676') V1.6km
B	V2.4km			135	910' (676') V2.4km
C	V2.8km			180	910' (676') V2.8km
D	V2.8km			205	910' (676') V3.6km

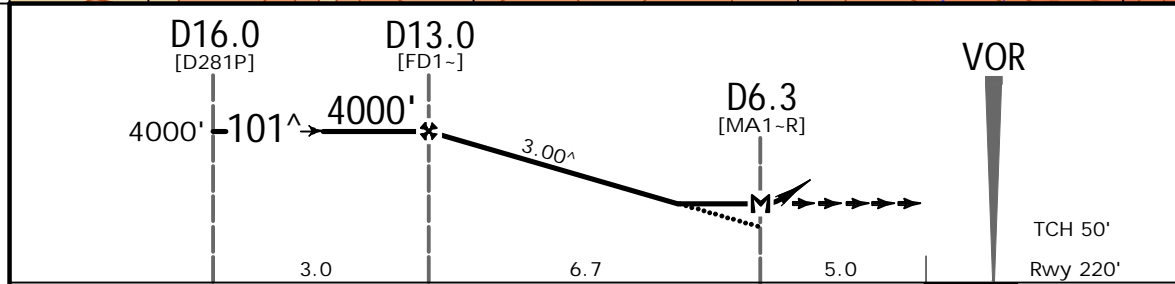
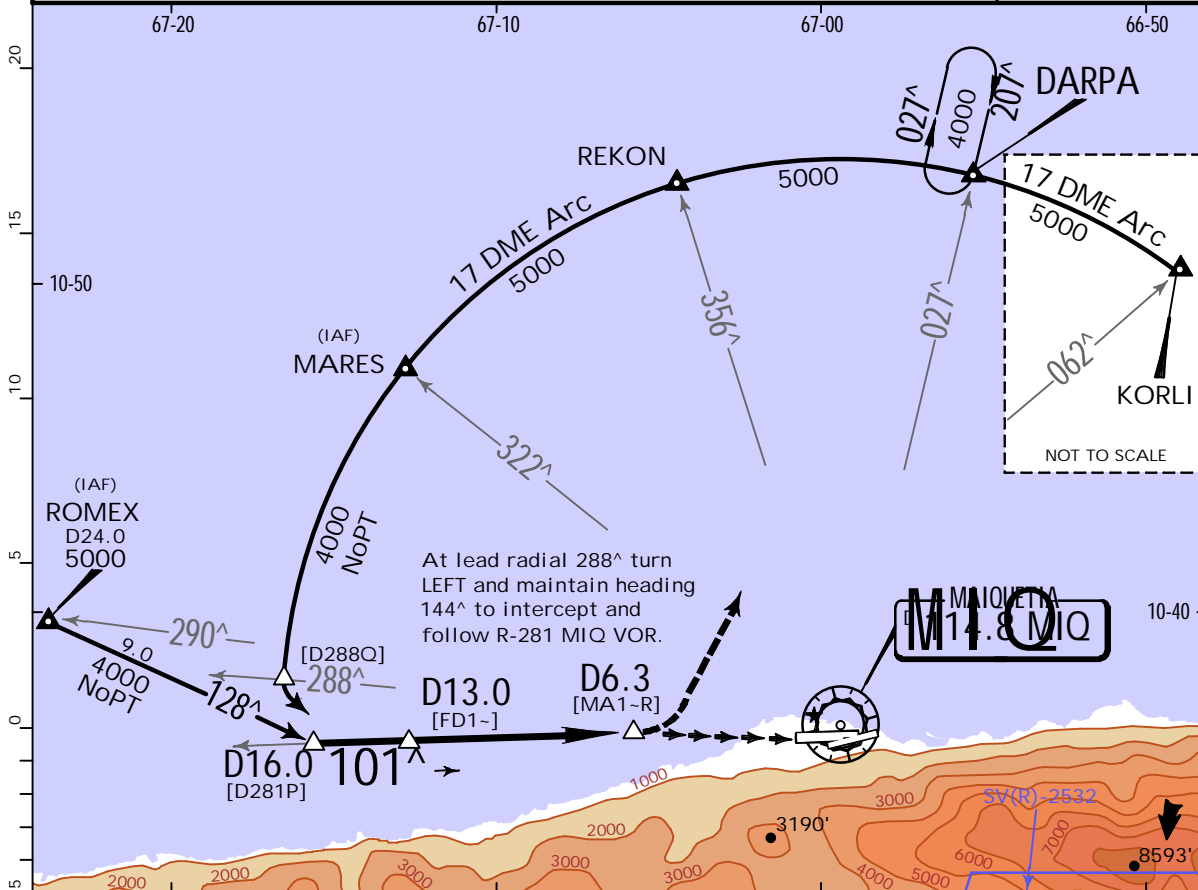
SVM/CCS
SIMON BOLIVAR INTL

JEPPESEN
17 FEB 23
Eff. 23 Feb. (13-2)

CAT A & B

MAIQUETIA, VENEZUELA
VOR DME Rwy 10R

ATIS 132.95		MAIQUETIA Approach (R) 120.1 120.4		MAIQUETIA Tower 118.1 118.4		Ground 121.7 121.9	
VOR MIQ 114.8	Final Apch Crs 101 [^]	D13.0 4000' (3780')	MDA(H) 1000' (780')	Apt Elev 234' Rwy 220'			
MISSED APCH: Turn LEFT direct to DARPA climbing to 4000' and hold or as directed by ATC.							
Alt Set: hPa		Rwy Elev: 8 hPa		Trans level: by ATC		Trans alt: 12000'	
MSA MIQ VOR							



Gnd speed-Kts	70	90	100	120	140	160	PAPI-L	4000'	DARPA
Descent Angle	3.00 [^]	372	478	531	637	849			
MAP at D6.3									
D13.0 to MAP	6.7	5:45	4:28	4:01	3:21	2:52			

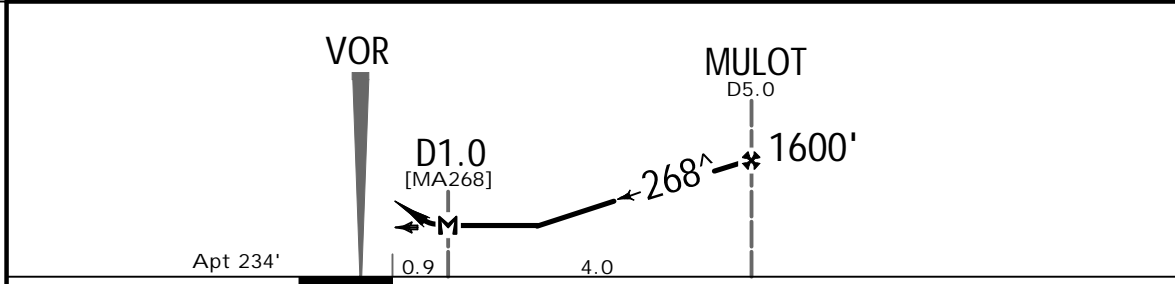
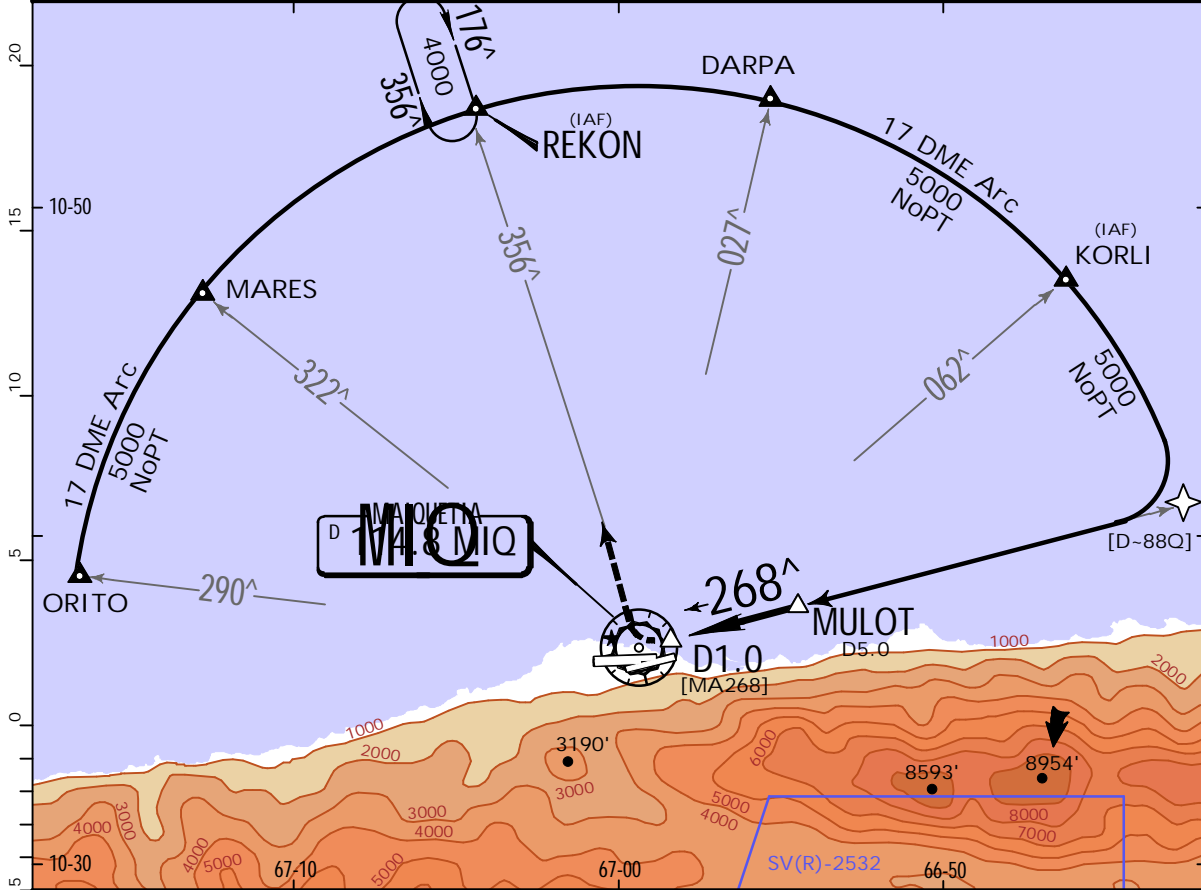
.State.		STRAIGHT-IN LANDING		CIRCLE-TO-LAND Not Authorized South of Rwy 28L-28R Not Authorized Landing Rwy 09	
MDA(H) 1000' (780')				MDA(H)	
A	V1.6km		Max Kts	1000' (766') V1.6km	
B				135	
C	NOT APPLICABLE		C	NOT APPLICABLE	
D			D		

SVM/CCS
SIMON BOLIVAR INTL

JEPPESSEN
17 FEB 23 **13-3** .Eff.23.Feb.

MAIQUETIA, VENEZUELA
VOR DME B

ATIS 132.95		MAIQUETIA Approach (R) 120.1 120.4		MAIQUETIA Tower 118.1 118.4		Ground 121.7 121.9	
VOR MIQ 114.8	Final Apch Crs 268[^]	MULOT 1600' (1366')	MDA(H) Refer to Minimums	Apt Elev 234'			
MISSED APCH: Turn RIGHT climbing to 4000' outbound via MIQ VOR R-356 to REKON and hold or as directed by ATC.							
Alt Set: hPa		Apt Elev: 9 hPa		Trans level: By ATC		Trans alt: 12000'	
RADAR vectors on request.							MSA MIQ VOR



MAP at D1.0						Lighting - Refer to Airport Chart	4000'	MIQ	REKON
							via	114.8	
							RT	R-356	

.State.		CIRCLE-TO-LAND	
Not Authorized		South of Rwy 10L-28R	
MDA(H)		800' (566') V1.6km	
800' (566') V2.4km			
	Max Kts.		
A	100		
B	135		
C	180		
D	205		

Chart changes since cycle 06-2023

ADD = added chart, REV = revised chart, DEL = deleted chart.

ACT PROCEDURE IDENT

INDEX

REV DATE

EFF DATE

MAIQUETIA, (SIMON BOLIVAR INTL - SVMI)

TERMINAL CHART CHANGE NOTICES

No Chart Change Notices for Airport SVMJ