

List of pages in this Trip Kit

Trip Kit Index

Airport Information For SCRM

Terminal Charts For SCRM

Revision Letter For Cycle 07-2023

Change Notices

Notebook

General Information

Location: ANTARTICA CHILENA CHL
ICAO/IATA: SCRM / TNM
Lat/Long: S62° 11.45', W058° 59.20'
Elevation: 147 ft

Airport Use: Public
Daylight Savings: Observed
UTC Conversion: +4:00 = UTC
Magnetic Variation: 10.6° E

Customs: No
Airport Type: IFR
Landing Fee: No
Control Tower: Yes
Jet Start Unit: No
LLWS Alert: No
Beacon: Yes

Sunrise: 1107 Z
Sunset: 2045 Z

Runway Information

Runway: 11
Length x Width: 4239 ft x 128 ft
Surface Type: gravel
TDZ-Elev: 142 ft
Lighting: Edge, REIL

Runway: 29
Length x Width: 4239 ft x 128 ft
Surface Type: gravel
TDZ-Elev: 127 ft
Lighting: Edge, REIL

Communication Information

Marsh Tower: 118.100
Marsh Approach: 119.700

SCRM/TNM

JEPPESEN

ANTARTICA CHILENA, CHILE

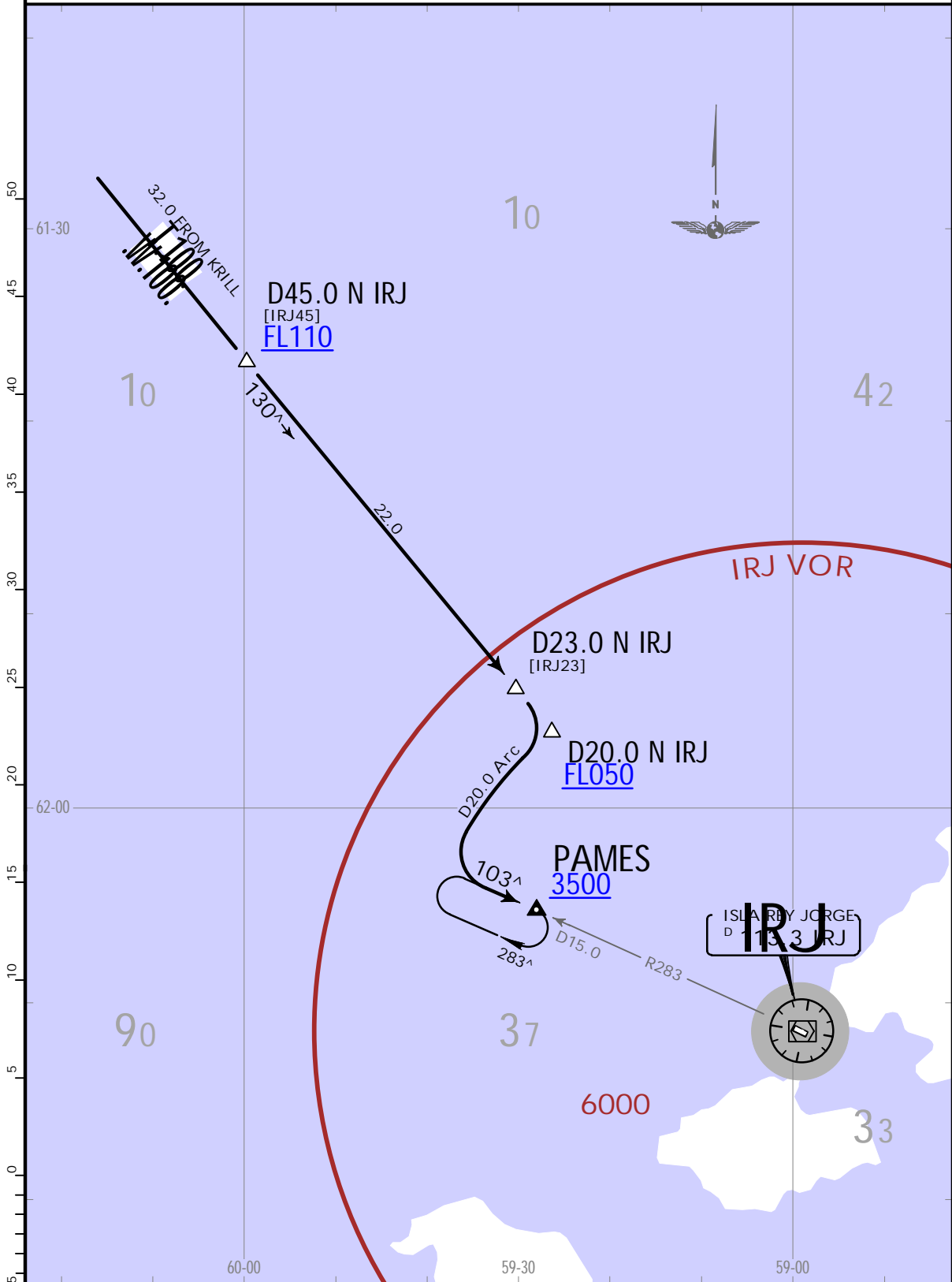
TENIENTE R MARSH MARTIN

12 NOV 21 10-2

.STAR.

Apt Elev 147	Alt Set: hPa Trans level: By ATC
-----------------	----------------------------------

PAMES 1 ARRIVAL [PAMES1]



ROUTING

On airway T-100/W-100, cross D45.0 N IRJ at or above FL110, at D23.0 N IRJ turn RIGHT to join D20.0 Arc IRJ at or above FL050 and intercept IRJ R283 (track 103[^]) direct to PAMES, then continue descent to 3500 or according to ATC clearance.

SCRM/TNM

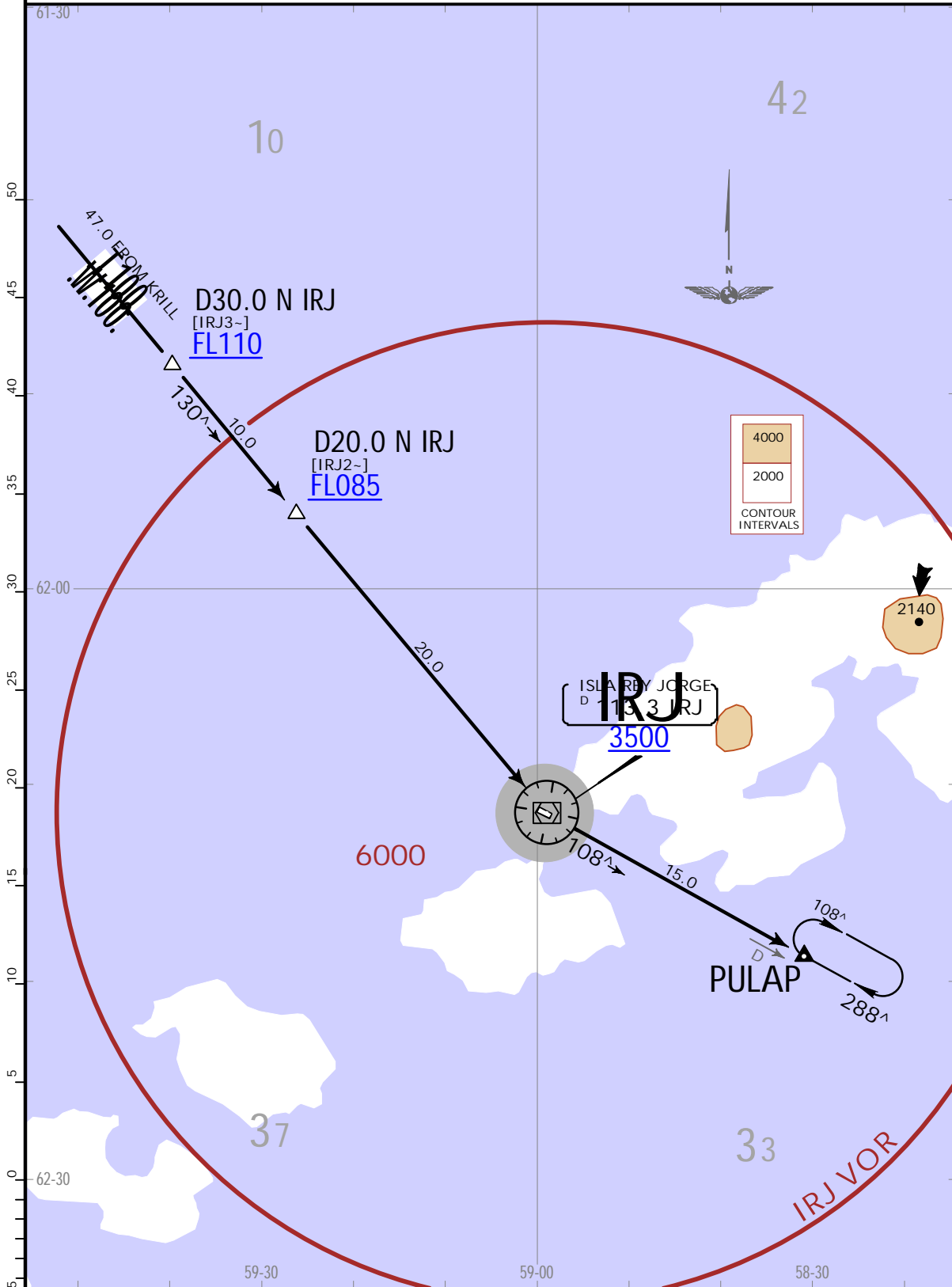
JEPPESEN 12 NOV 21 (10-2A)

ANTARTICA CHILENA, CHILE .STAR.

TENIENTE R MARSH MARTIN

Apt Elev 147	Alt Set: hPa Trans level: By ATC
-----------------	----------------------------------

PULAP 1 ARRIVAL [PULAP1]



ROUTING

On airway T-100/W-100, cross D30.0 N IRJ at or above FL110, cross D20.0 N IRJ at or above FL085, continue descent to IRJ VOR at or above 3500, then direct to PULAP, enter holding or according to ATC clearance.

SCRM/TNM



JEPPESEN

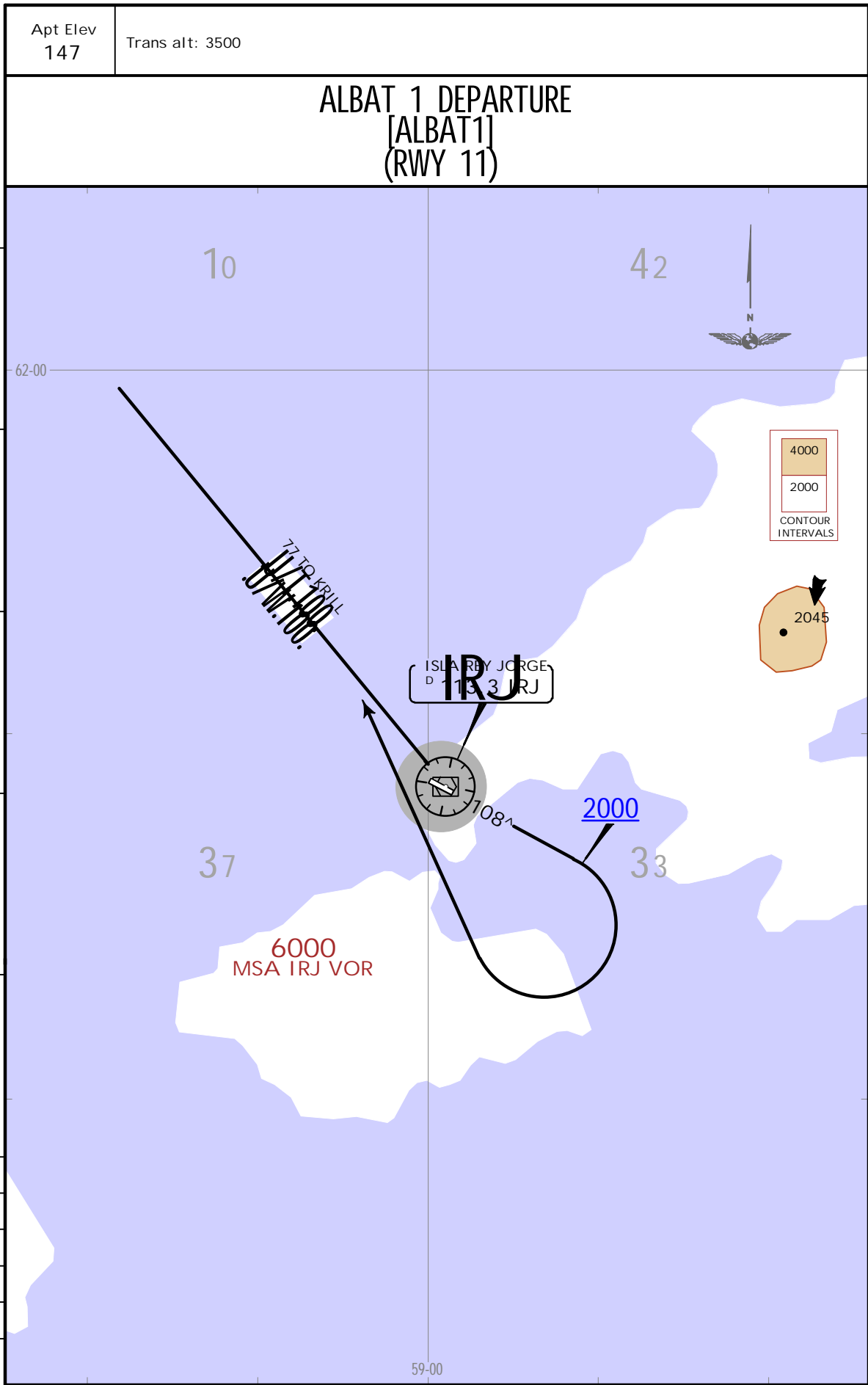
ANTARTICA CHILENA, CHILE

TENIENTE R MARSH MARTIN

12 NOV 21

10-3

.SID.



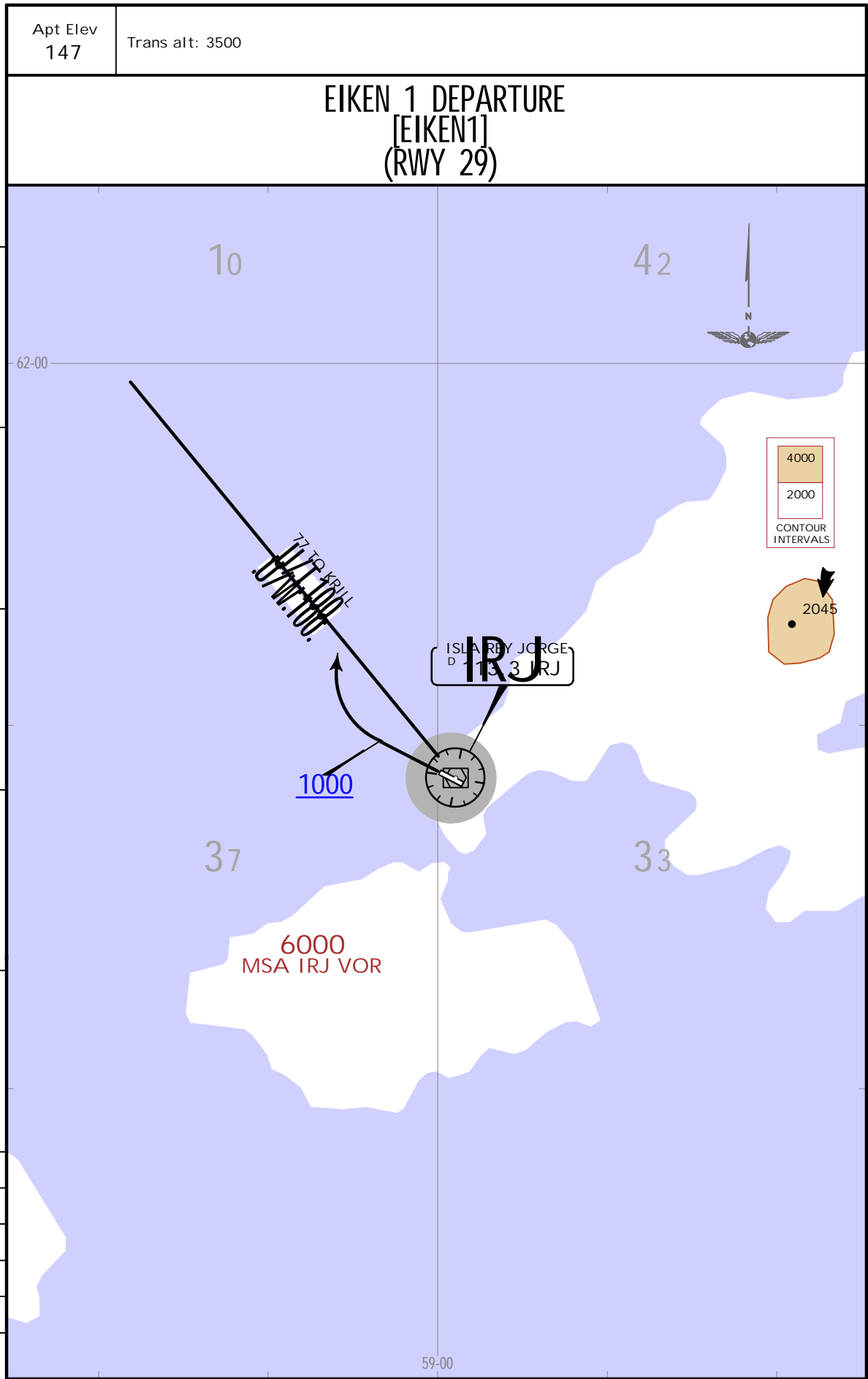
SCRM/TNM

JEPPESEN

ANTARTICA CHILENA, CHILE

TENIENTE R MARSH MARTIN 12 NOV 21 (10-3A)

.SID.



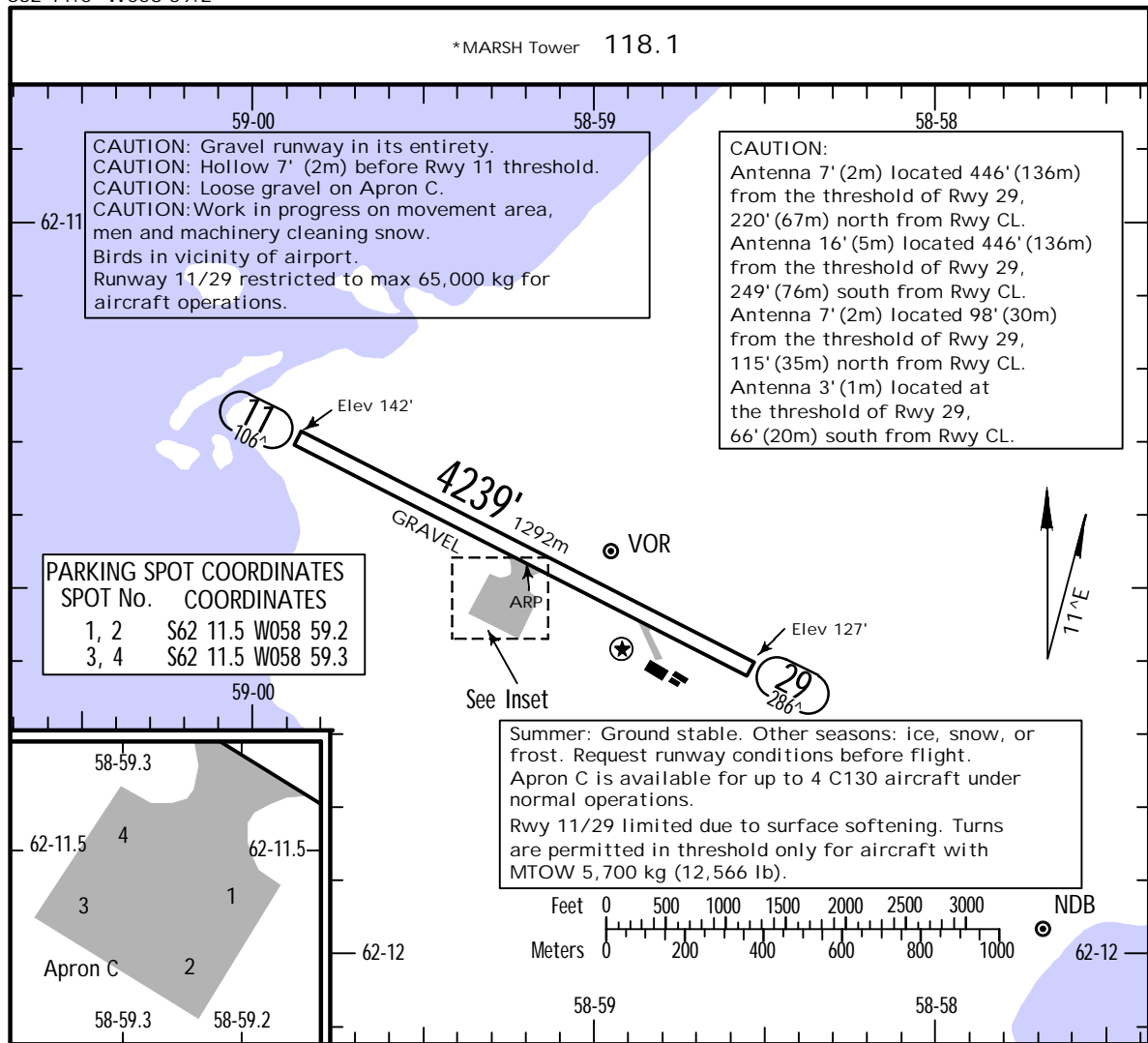
INITIAL CLIMB

Climb on runway heading to 1000, then turn RIGHT to intercept airway U/T-100, U/W-100.

SCRM/TNM

Apt Elev 147'
S62 11.5 W058 59.2

JEPPESEN ANTARTICA CHILENA, CHILE
27 MAY 22 (10-9) TENIENTE R MARSH MARTIN



ADDITIONAL RUNWAY INFORMATION

RWY	USABLE LENGTHS	WIDTH	
			LANDING BEYOND
	Threshold	Glide Slope	
11 29	HIRL REIL PAPI-L (angle 3.0°)		

TAKE-OFF		FOR FILING AS ALTERNATE	
All Rwys		Based on expected IAP's to be used at Alternate Airport for ETA	
1 & 2 Eng	Available Landing Minimums	CEILING	(Highest DH/MDH from available IAP's) DH/MDH + 200'
3 & 4 Eng		VISIBILITY	(Highest applicable VIS from available IAP's) APCH VIS + 800m

SCRM/TNM

TENIENTE R MARSH MARTIN

JEPPESEN

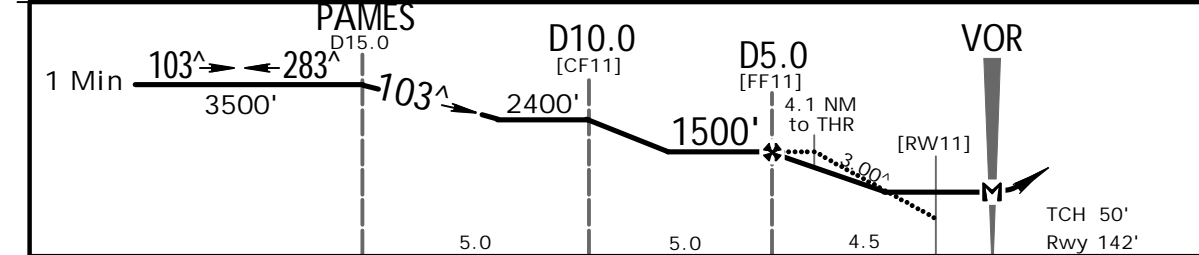
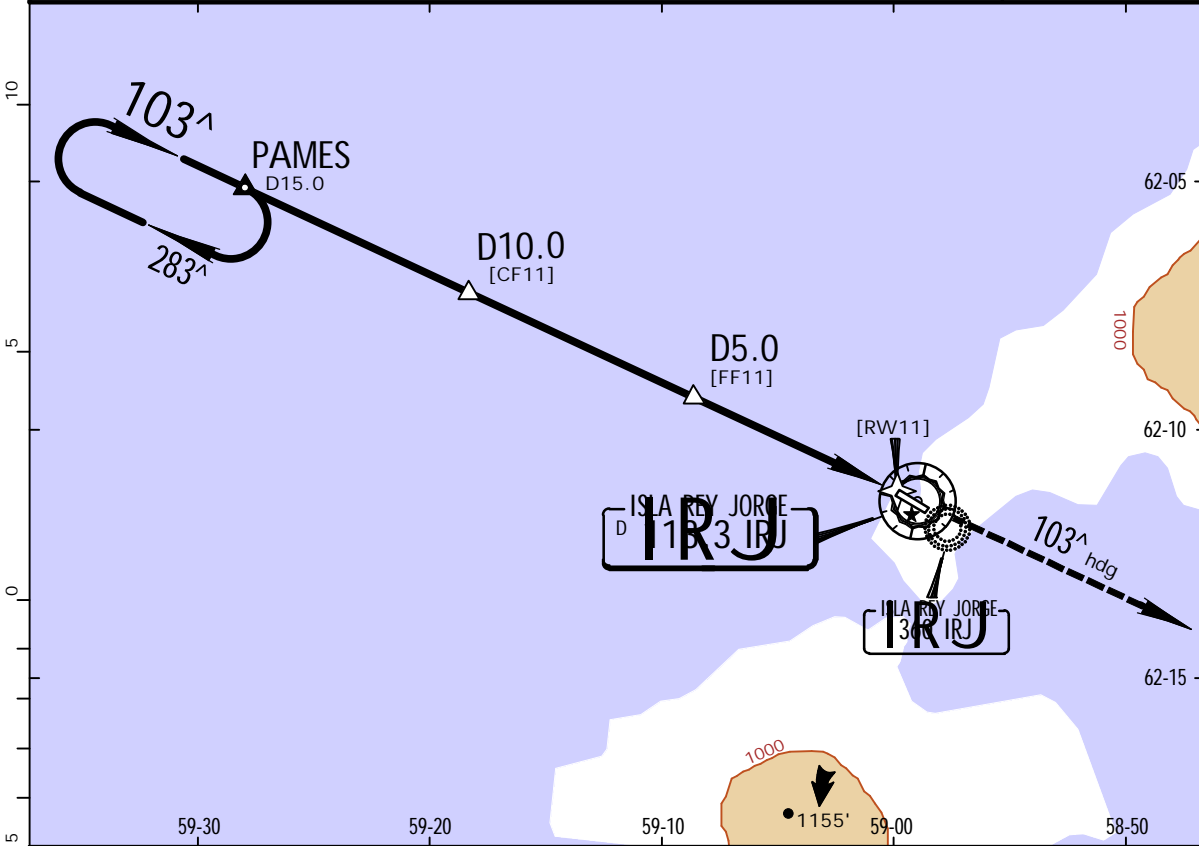
13-1

10 AUG 18
Eff. 16 Aug.

CAT A, B & C

ANTARTICA CHILENA, CHILE
VOR Rwy 11

MARSH Approach			*MARSH Tower		
119.7			118.1		
VOR IRJ 113.3	Final Apch Crs 103 [^]	Minimum Alt D5.0 1500' (1358')	MDA(H) 760' (618')	Apt Elev 147' Rwy 142'	6000 MSA IRJ VOR
MISSED APCH: Climb to 3500' on 103 [^] heading, then follow ATC instructions.					
Alt Set: hPa		Rwy Elev: 5 hPa	Trans level: By ATC		Trans alt: 3500'
1. DME required. 2. CAUTION: Request information, possible icebergs in approach zone. Readings from radio altimeters and radar altimeters could be erratic over ice and snow.					



Gnd speed-Kts	70	90	100	120	140	160
Descent Angle	3.00 [^]	372	478	531	637	849
MAP at VOR						



STRAIGHT-IN LANDING RWY 11		CIRCLE-TO-LAND	
MDA(H) 760' (618')		Authorized Only Southwest of Runway	Authorized Only Northeast of Runway
A	1.6 km	Max Kts. 100 MDA(H) 760' (613') -1.6 km	MDA(H) 840' (693') -1.6 km
B	1.6 km	135 860' (713') -1.6 km	860' (713') -1.6 km
C	2.8 km	180 860' (713') -3.2 km	920' (773') -3.6 km
D	NOT APPLICABLE	D NOT APPLICABLE	NOT APPLICABLE

PANS OPS

SCRM/TNM

TENIENTE R MARSH MARTIN

JEPPESEN

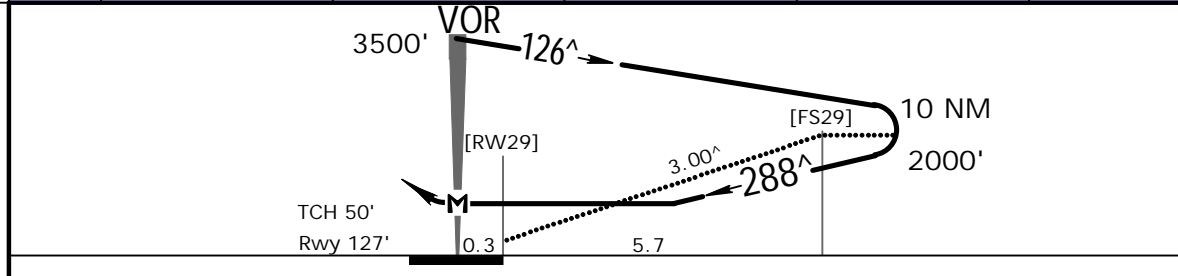
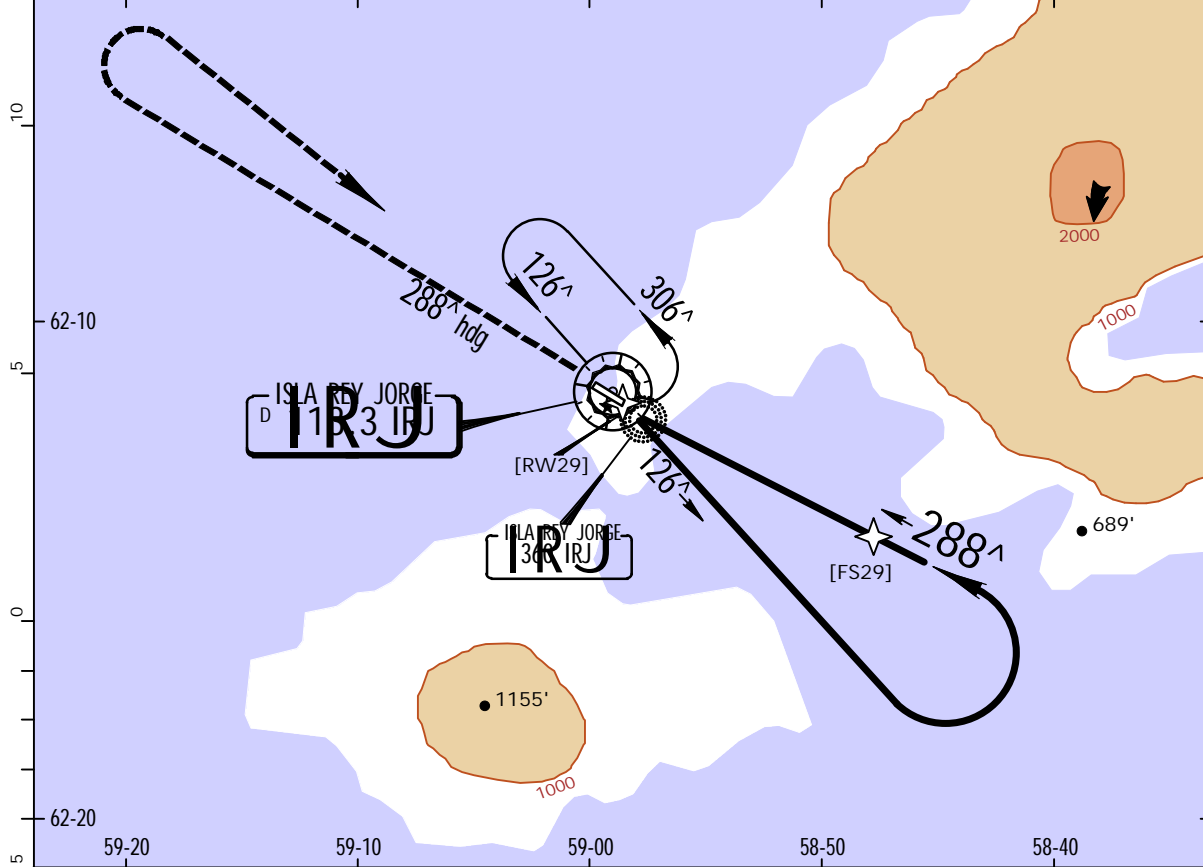
13-2

10 AUG 18
Eff. 16 Aug.

CAT A, B & C

ANTARTICA CHILENA, CHILE
VOR Y Rwy 29

MARSH Approach			*MARSH Tower		
119.7			118.1		
VOR IRJ 113.3	Final Apch Crs 288 [^]	No FAF	MDA(H) 820' (693')	Apt Elev 147' Rwy 127'	6000 MSA IRJ VOR
MISSED APCH: Climb to 3500' on 288 [^] heading, turn RIGHT to IRJ VOR and enter holding pattern.					
Alt Set: hPa Rwy Elev: 5 hPa Trans level: By ATC Trans alt: 3500'					
1. CAUTION: Request information, possible icebergs in approach zone. Readings from radio altimeters and radar altimeters could be erratic over ice and snow.					



Gnd speed-Kts	70	90	100	120	140	160	REIL	3500'	288 [^]	IRJ
Descent Angle	3.00 [^]	372	478	531	637	849				
MAP at VOR										113.3

STRAIGHT-IN LANDING RWY 29			CIRCLE-TO-LAND		
MDA(H) 820' (693')			Authorized Only Southwest of Runway		Authorized Only Northeast of Runway
A	1.6 km		Max Kts	MDA(H)	MDA(H)
B	1.6 km		100	860' (713') -1.6 km	840' (693') -1.6 km
C	3.2 km		135	860' (713') -1.6 km	860' (713') -1.6 km
D	NOT APPLICABLE		180	860' (713') -3.2 km	920' (773') -3.6 km
			D	NOT APPLICABLE	NOT APPLICABLE

CHANGES: None.

JEPPESEN, 2001, 2018. ALL RIGHTS RESERVED.

SCRM/TNM

JEPPESEN

ANTARTICA CHILENA, CHILE
VOR Z Rwy 29

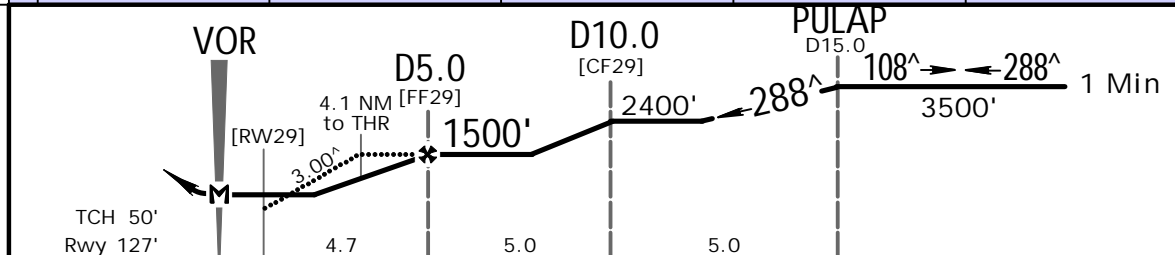
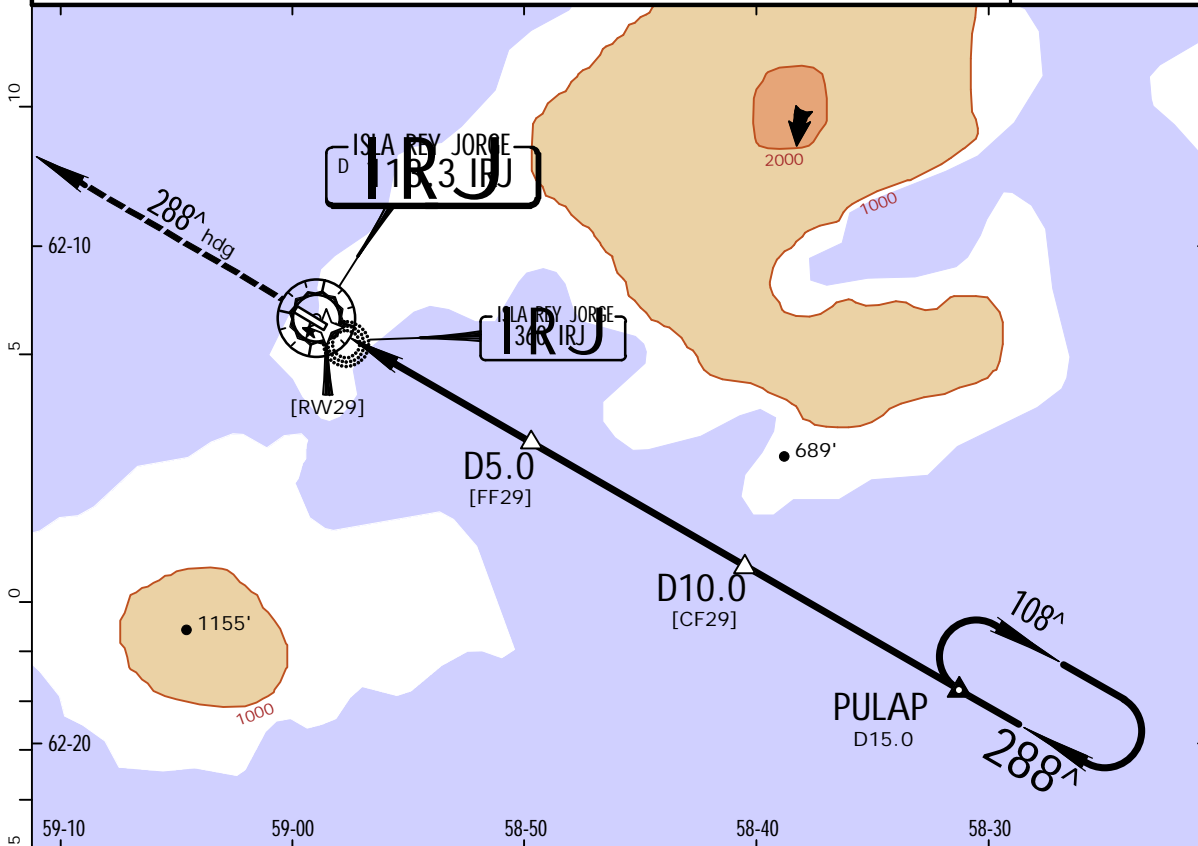
TENIENTE R MARSH MARTIN

13-3

10 AUG 18
.Eff.16.Aug.

CAT A, B & C

MARSH Approach			*MARSH Tower		
119.7			118.1		
VOR IRJ 113.3	Final Apch Crs 288 [^]	Minimum Alt D5.0 1500' (1373')	MDA(H) 760' (633')	Apt Elev 147' Rwy 127'	6000 MSA IRJ VOR
MISSED APCH: Climb to 3500' on 288 [^] heading, then follow ATC instructions.					
Alt Set: hPa Rwy Elev: 5 hPa Trans level: By ATC Trans alt: 3500'					
1. DME required. 2. CAUTION: Request information, possible icebergs in approach zone. Readings from radio altimeters and radar altimeters could be erratic over ice and snow.					



Gnd speed-Kts	70	90	100	120	140	160	REIL PAPI-L	3500' ↑ on 288 [^] hdg
Descent Angle 3.00 [^]	372	478	531	637	743	849		
MAP at VOR								

STRAIGHT-IN LANDING RWY 29		CIRCLE-TO-LAND	
MDA(H) 760' (633')		Authorized Only Southwest of Runway	Authorized Only Northeast of Runway
A	1.6 km	Max Kts 100 760' (613') -1.6 km	760' (613') -1.6 km
B	1.6 km	135 860' (713') -1.6 km	860' (713') -1.6 km
C	2.8 km	180 860' (713') -3.2 km	920' (773') -3.6 km
D	NOT APPLICABLE	D	NOT APPLICABLE

PANS OPS

SCRM/TNM



ANTARTICA CHILENA, CHILE
NDB (ADF) Rwy 11

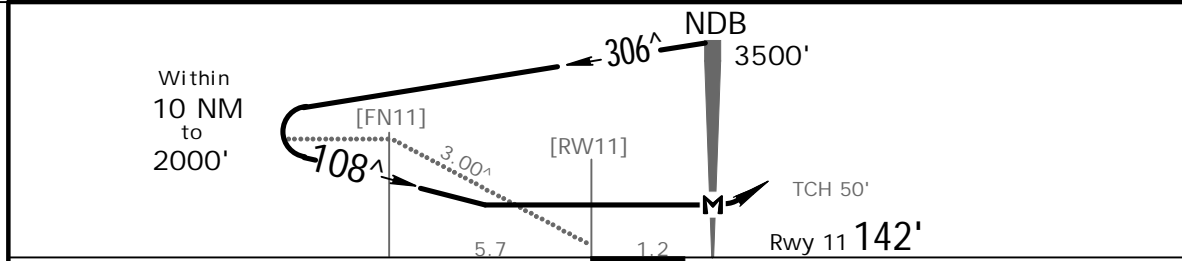
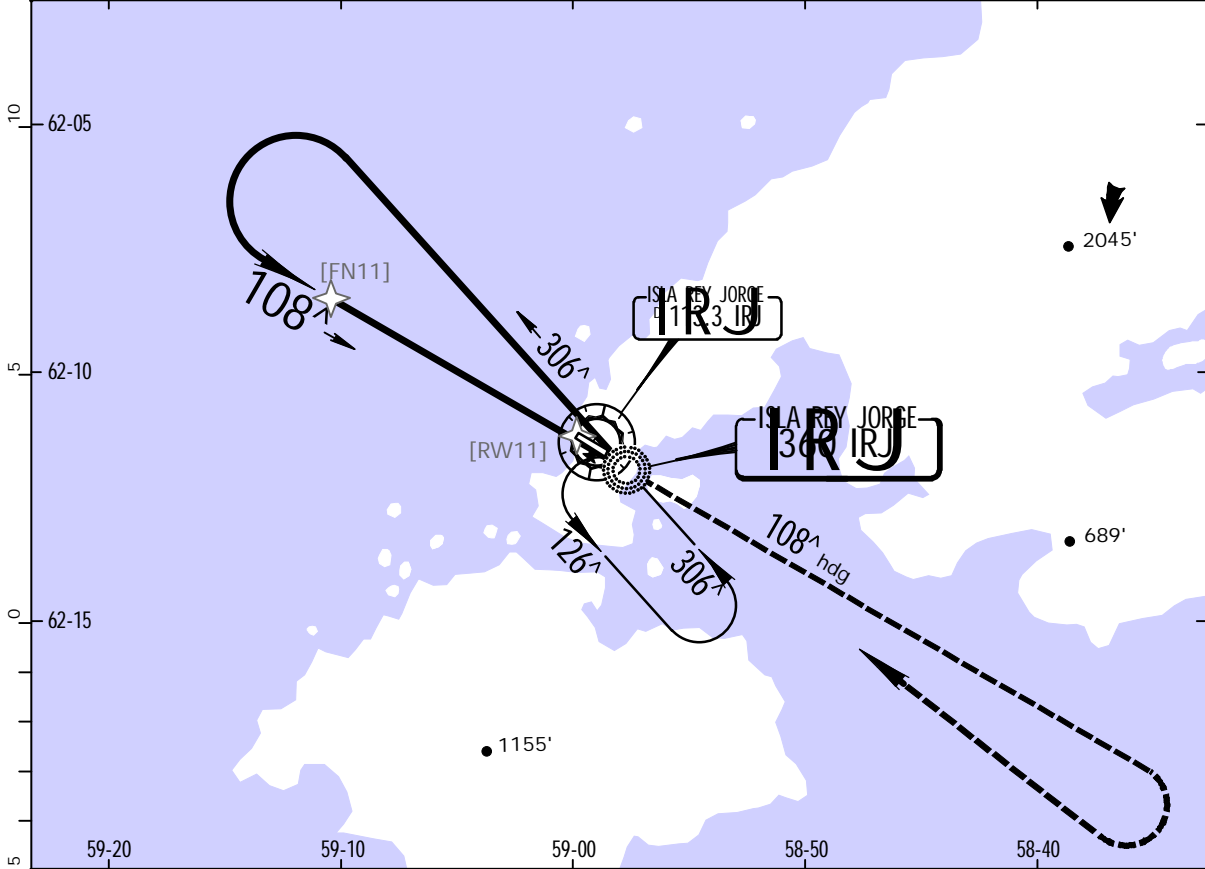
TENIENTE R MARSH MARTIN

16-1

26 SEP 14

CATA, B & C

MARSH Approach			*MARSH Tower		
119.7			118.1		
NDB IRJ 360	Final Apch Crs 108 [^]	No FAF	MDA(H) 860' (718')	Apt Elev 147' Rwy 11 142'	6000' MSA IRJ NDB
MISSED APCH: Climb to 3500' on 108 [^] heading, turn RIGHT to IRJ NDB and enter holding pattern.					
Alt Set: hPa Apt Elev: 5 hPa Trans level: By ATC Trans alt: 3500'					
1. CAUTION: Request information, possible icebergs in approach zone. Readings from radio altimeters and radar altimeters could be erratic over ice and snow.					



Gnd speed-Kts	70	90	100	120	140	160	REIL PAPI-L	3500' ↑ on 108 [^] hdg
Descent angle	3.00 [^]	372	478	531	637	743		
MAP at NDB								

STRAIGHT-IN LANDING RWY 11		CIRCLE-TO-LAND	
MDA(H) 860' (718')		Authorized Only Southwest of Runway	Authorized Only Northeast of Runway
A	1.6 km	Max Kts: 100 860'(713')-1.6 km	860'(713')-1.6 km
B	3.2 km	135 860'(713')-3.2 km	920'(773')-3.6 km
C	NOT APPLICABLE	180 NOT APPLICABLE	NOT APPLICABLE
D		D	

PANS OPS

SCRM/TNM



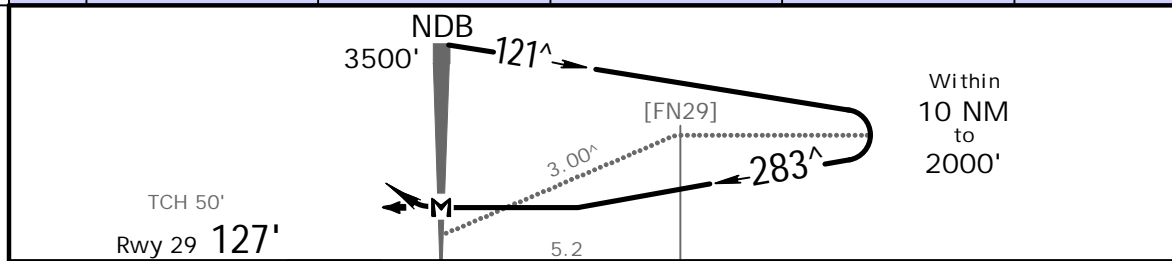
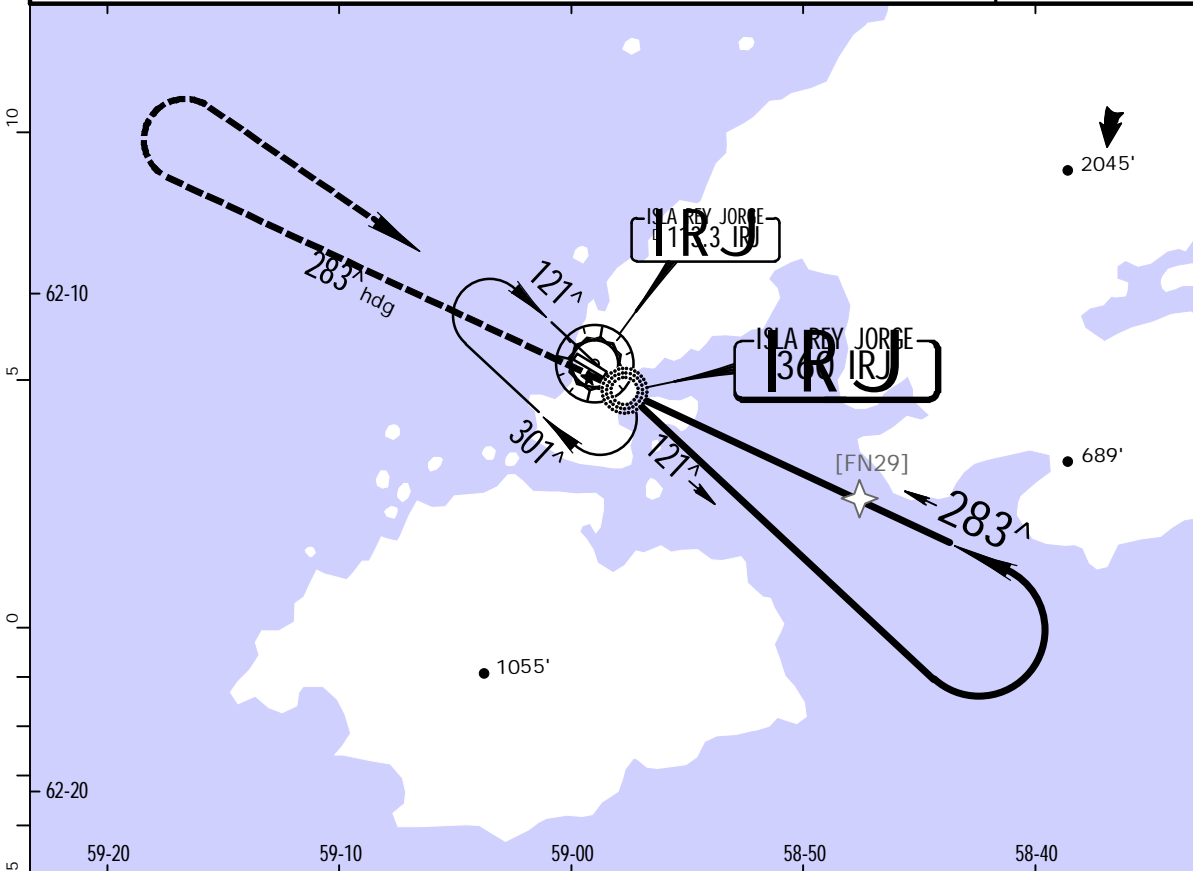
ANTARTICA CHILENA, CHILE
NDB (ADF) Rwy 29

TENIENTE R MARSH MARTIN

(16-2) 26 SEP 14

CAT A, B & C

MARSH Approach			*MARSH Tower		
119.7			118.1		
NDB IRJ 360	Final Apch Crs 283 [^]	No FAF	MDA(H) 860' (733')	Apt Elev 147' Rwy 29 127'	6000' MSA IRJ NDB
MISSED APCH: Climb to 3500' on 283 [^] heading turn RIGHT to IRJ NDB and enter holding pattern.					
Alt Set: hPa Rwy Elev: 5 hPa Trans level: By ATC Trans alt: 3500' 1. CAUTION: Request information, possible icebergs in approach zone. Readings from radio altimeters and radar altimeters could be erratic over ice and snow.					



Gnd speed-Kts	70	90	100	120	140	160	REIL PAPI-L 3500' on 283 [^] hdg
Descent Angle 3.00 [^]	372	478	531	637	743	849	
MAP at NDB							

STRAIGHT-IN LANDING RWY 29		CIRCLE-TO-LAND	
MDA(H) 860' (733')		Authorized Only Southwest of Runway	Authorized Only Northeast of Runway
A	1.6 km	Max Kts 100	860'(713')-1.6 km
B		135	860'(713')-1.6 km
C	3.2 km	180	860'(713')-3.2 km
D	NOT APPLICABLE	D	NOT APPLICABLE

PANS OPS

Chart changes since cycle 06-2023

ADD = added chart, REV = revised chart, DEL = deleted chart.

ACT	PROCEDURE IDENT	INDEX	REV DATE	EFF DATE
-----	-----------------	-------	----------	----------

ANTARTICA CHILENA, (TTE. RODOLFO MARSH MARTIN - SCRM)

TERMINAL CHART CHANGE NOTICES

No Chart Change Notices for Airport SCRM