

List of pages in this Trip Kit

Trip Kit Index

Airport Information For SCCI

Terminal Charts For SCCI

Revision Letter For Cycle 07-2023

Change Notices

Notebook

General Information

Location: PUNTA ARENAS CHL
ICAO/IATA: SCCI / PUQ
Lat/Long: S53° 00.22', W070° 51.22'
Elevation: 139 ft

Airport Use: Public
Daylight Savings: Observed
UTC Conversion: +4:00 = UTC
Magnetic Variation: 12.9° E

Fuel Types: 100-130 Octane, Jet A-1
Customs: Yes
Airport Type: IFR
Landing Fee: No
Control Tower: Yes
Jet Start Unit: No
LLWS Alert: No
Beacon: Yes

Sunrise: 1132 Z
Sunset: 2154 Z

Runway Information

Runway: 01
Length x Width: 5502 ft x 148 ft
Surface Type: concrete
TDZ-Elev: 122 ft
Lighting: Edge

Runway: 07
Length x Width: 9154 ft x 148 ft
Surface Type: concrete
TDZ-Elev: 139 ft
Lighting: Edge, REIL
Stopway: 787 ft

Runway: 12
Length x Width: 7874 ft x 148 ft
Surface Type: concrete
TDZ-Elev: 138 ft
Lighting: Edge, REIL

Runway: 13
Length x Width: 3937 ft x 148 ft
Surface Type: concrete
TDZ-Elev: 138 ft
Lighting: Edge

Runway: 19
Length x Width: 5502 ft x 148 ft
Surface Type: concrete
TDZ-Elev: 110 ft
Lighting: Edge

Runway: 25
Length x Width: 9154 ft x 148 ft
Surface Type: concrete
TDZ-Elev: 112 ft
Lighting: Edge, ALS
Stopway: 198 ft

Runway: 26
Length x Width: 8366 ft x 148 ft
Surface Type: concrete
TDZ-Elev: 115 ft
Lighting: Edge

Runway: 30
Length x Width: 7874 ft x 148 ft
Surface Type: concrete
TDZ-Elev: 112 ft
Lighting: Edge, ALS

Communication Information

Punta Arenas Tower: 118.700
Punta Arenas Ground: 121.900
Punta Arenas ACC: 123.900
Punta Arenas ACC: 128.100
Punta Arenas Radio FSS: 1002.400 Air-Ground
Punta Arenas Radio FSS: 344.600 Air-Ground
Punta Arenas Radio FSS: 548.100 Air-Ground
Punta Arenas Radio FSS: 664.900 Air-Ground

SCCI/PUQ

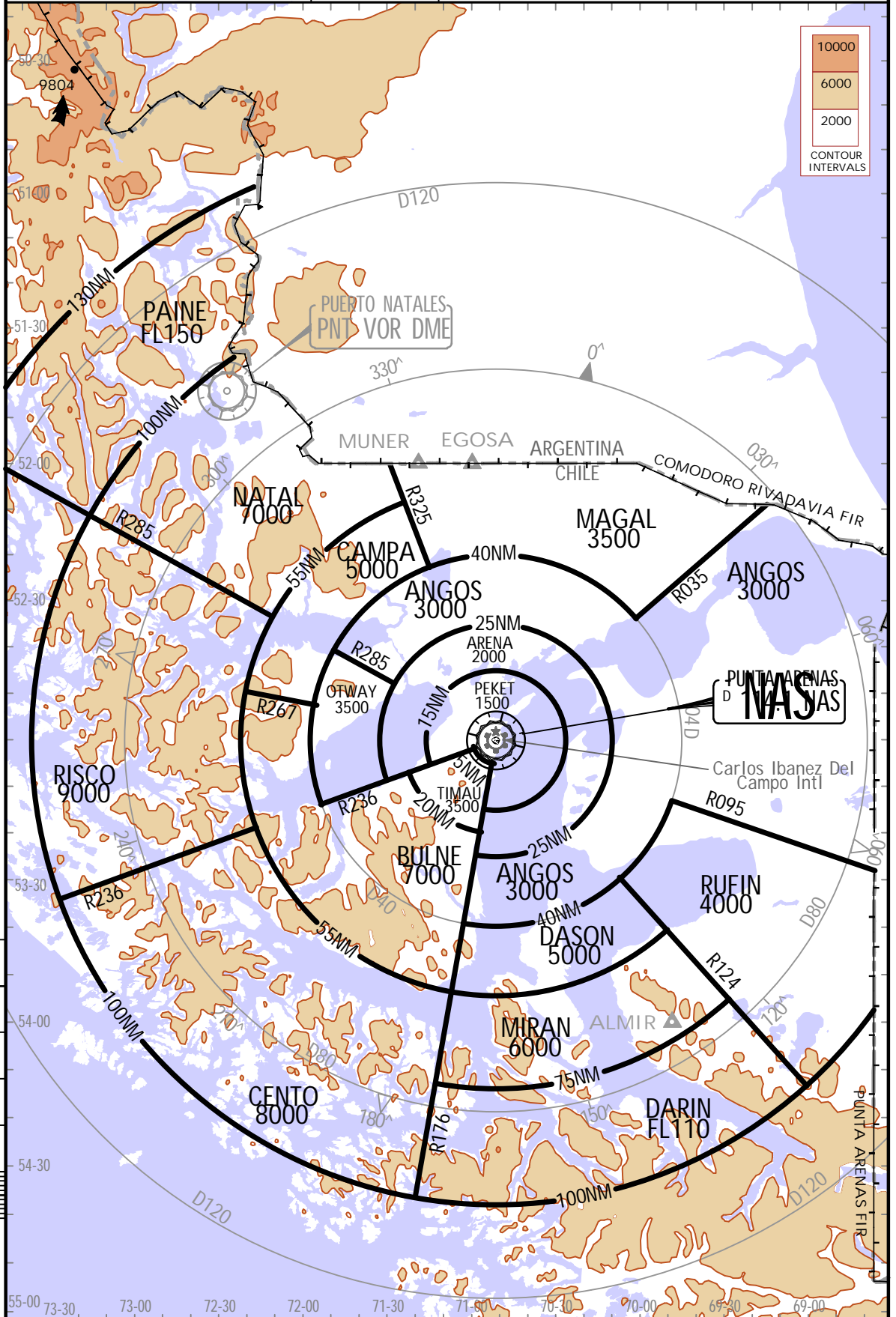


PUNTA ARENAS, CHILE

CARLOS IBANEZ DEL CAMPO INTL (10-1R) 19 AUG 22

RADAR.MINIMUM.ALTIITUDES.

PUNTA ARENAS Approach (R)		Apt Elev	Alt Set: hPa Trans level: By ATC Trans alt: 10000
128.1	123.9	139	



CHANGES: Topo revised.

JEPPesen, 2003, 2022. ALL RIGHTS RESERVED.

SCCI/PUQ

JEPPESEN

PUNTA ARENAS, CHILE

CARLOS IBANEZ DEL CAMPO INTL

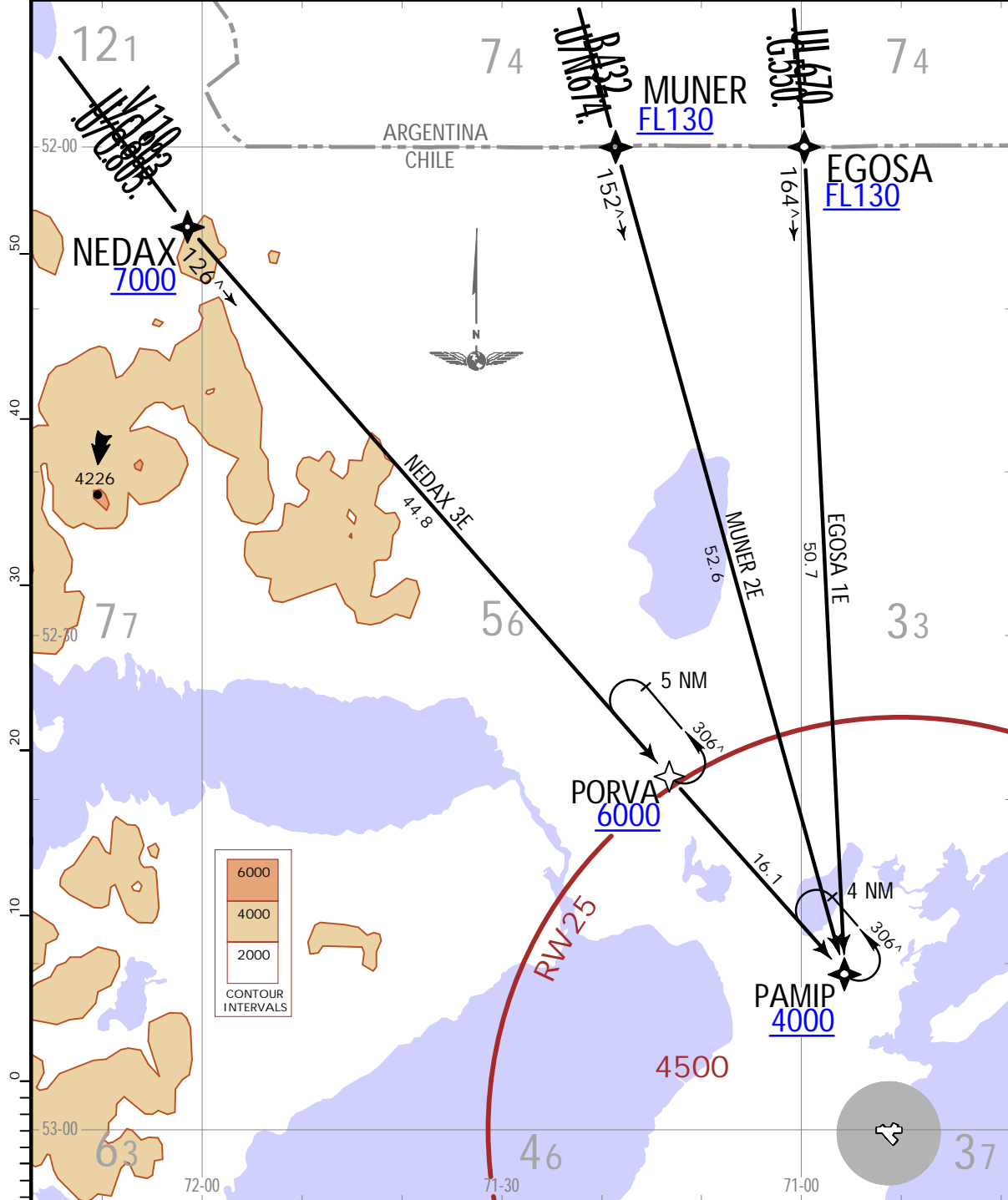
10-2

24 JUN 22

.RNAV.STAR.

Apt Elev 139	Alt Set: hPa Trans level: By ATC
	RNAV 1 or RNP 1 approval required GNSS required

EGOSA 1E [EGOS1E], MUNER 2E [MUNE2E]
NEDAX 3E [NEDA3E]
RNAV ARRIVALS
(RWYS 25, 30)



STAR	ROUTING
EGOSA 1E	From EGOSA direct to PAMIP. Cross EGOSA at or above FL130, PAMIP at or above 4000, then according to ATC clearance.
MUNER 2E	From MUNER direct to PAMIP. Cross MUNER at or above FL130, PAMIP at or above 4000, then according to ATC clearance.
NEDAX 3E	From NEDAX direct to PORVA - PAMIP. Cross NEDAX at or above 7000, PORVA at or above 6000, PAMIP at or above 4000, then according to ATC clearance.

SCCI/PUQ

JEPPESEN

PUNTA ARENAS, CHILE

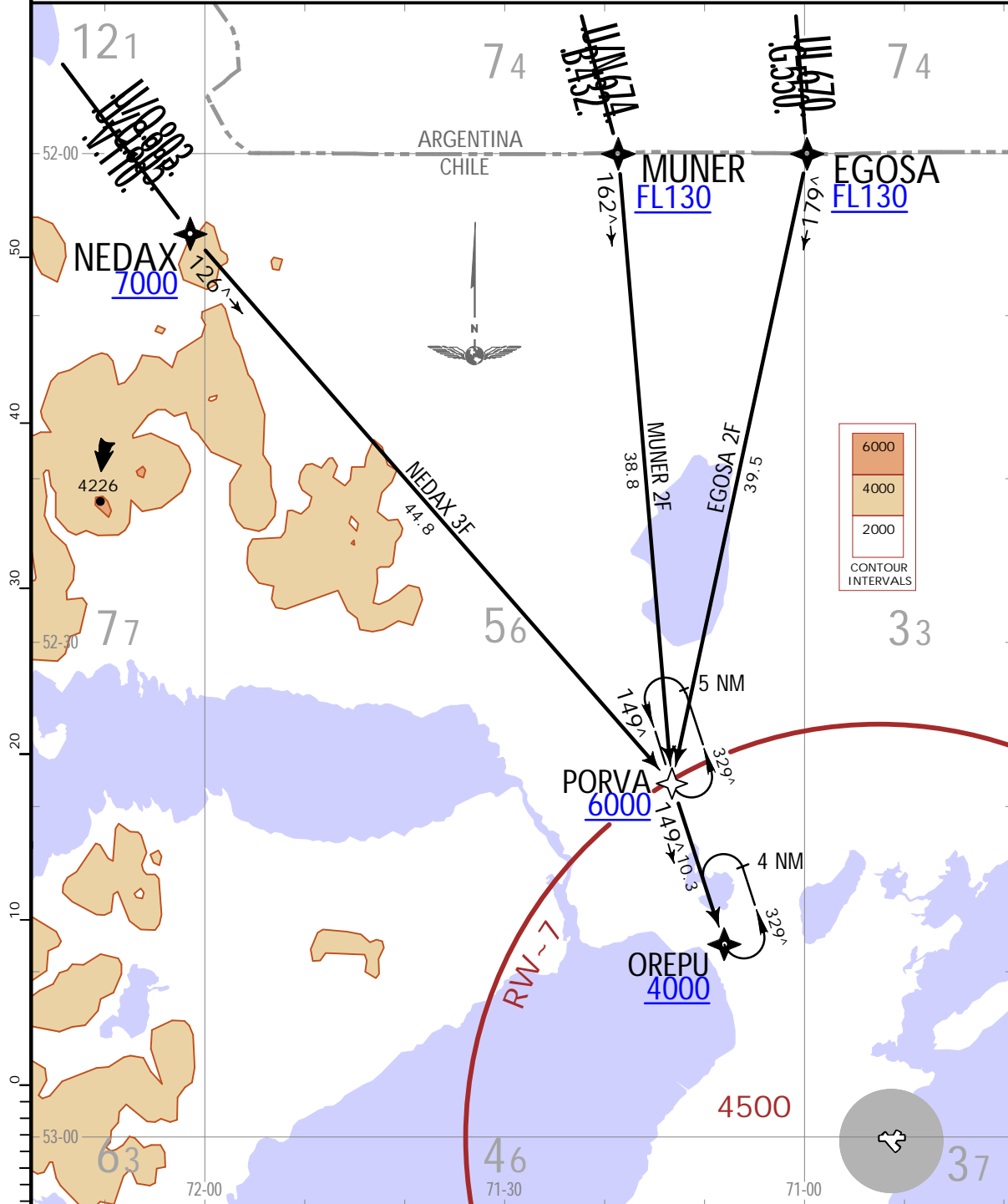
CARLOS IBANEZ DEL CAMPO INTL

10-2A 24 JUN 22

.RNAV.STAR.

Apt Elev 139	Alt Set: hPa Trans level: By ATC
	RNAV 1 or RNP 1 approval required GNSS required

EGOSA 2F [EGOS2F], MUNER 2F [MUNE2F]
NEDAX 3F [NEDA3F]
RNAV ARRIVALS
(RWYS 07, 12)



STAR	ROUTING
EGOSA 2F	From EGOSA direct to PORVA - OREPU. Cross EGOSA at or above FL130, PORVA at or above 6000, OREPU at or above 4000, then according to ATC clearance.
MUNER 2F	From MUNER direct to PORVA - OREPU. Cross MUNER at or above FL130, PORVA at or above 6000, OREPU at or above 4000, then according to ATC clearance.
NEDAX 3F	From NEDAX direct to PORVA - OREPU. Cross NEDAX at or above 7000, PORVA at or above 6000, OREPU at or above 4000, then according to ATC clearance.

SCCI/PUQ

JEPPESEN

PUNTA ARENAS, CHILE

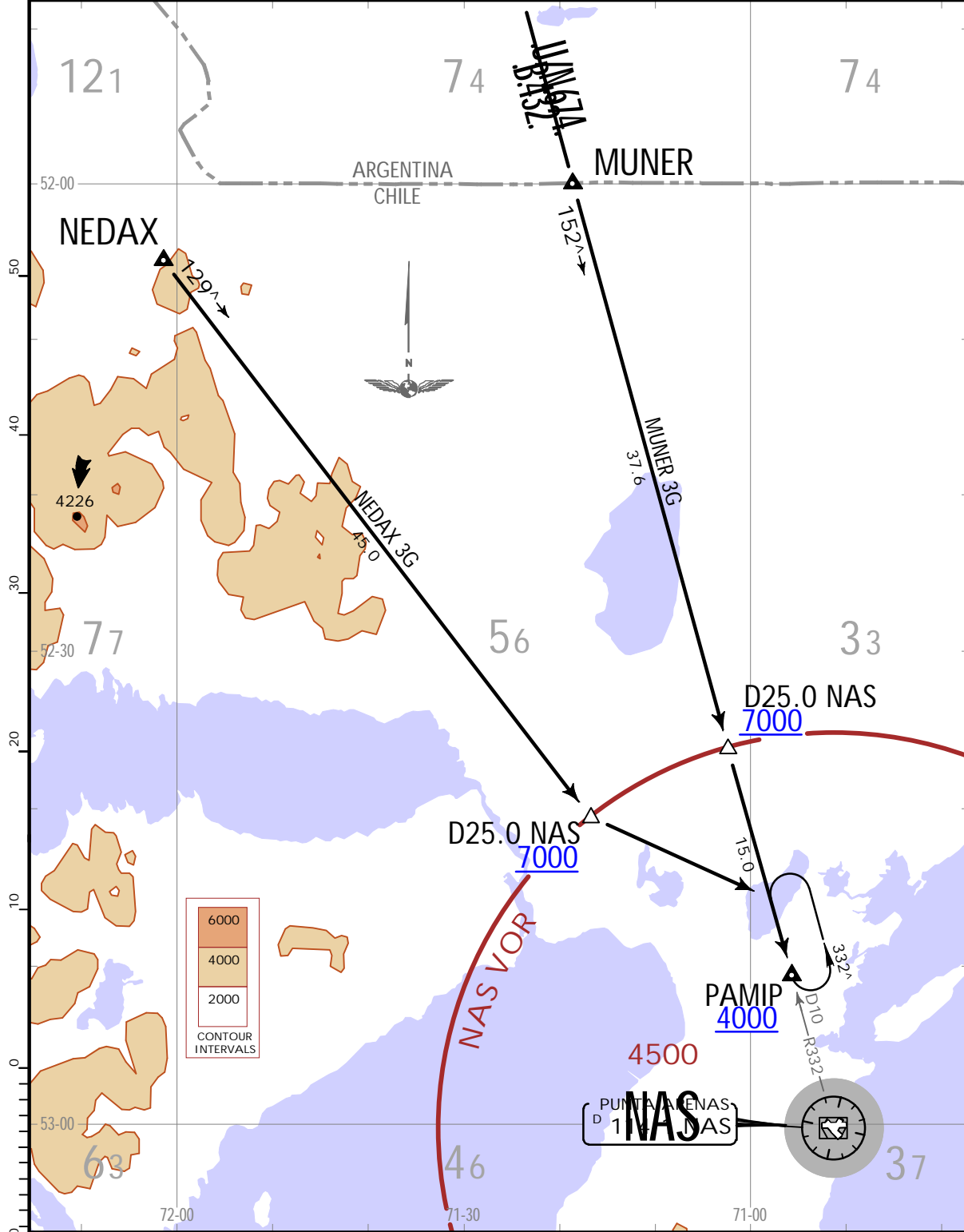
CARLOS IBANEZ DEL CAMPO INTL

(10-2B) 24 JUN 22

.STAR.

Apt Elev 139	Alt Set: hPa Trans level: By ATC
-----------------	----------------------------------

**MUNER 3G [MUNE3G], NEDAX 3G [NEDA3G]
ARRIVALS
(RWY 25)**



STAR	ROUTING
MUNER 3G	Proceed on airways B-432/U/N-674 in descent to PAMIP, according to ATC clearance. Cross D25.0 NAS at or above 7000, PAMIP at or above 4000.
NEDAX 3G	At D25.0 NAS, leave airway to continue to PAMIP, according to ATC clearance. Cross D25.0 NAS at or above 7000, PAMIP at or above 4000.

CHANGES: New format.

SCCI/PUQ

CARLOS IBANEZ DEL CAMPO INTL



10-3

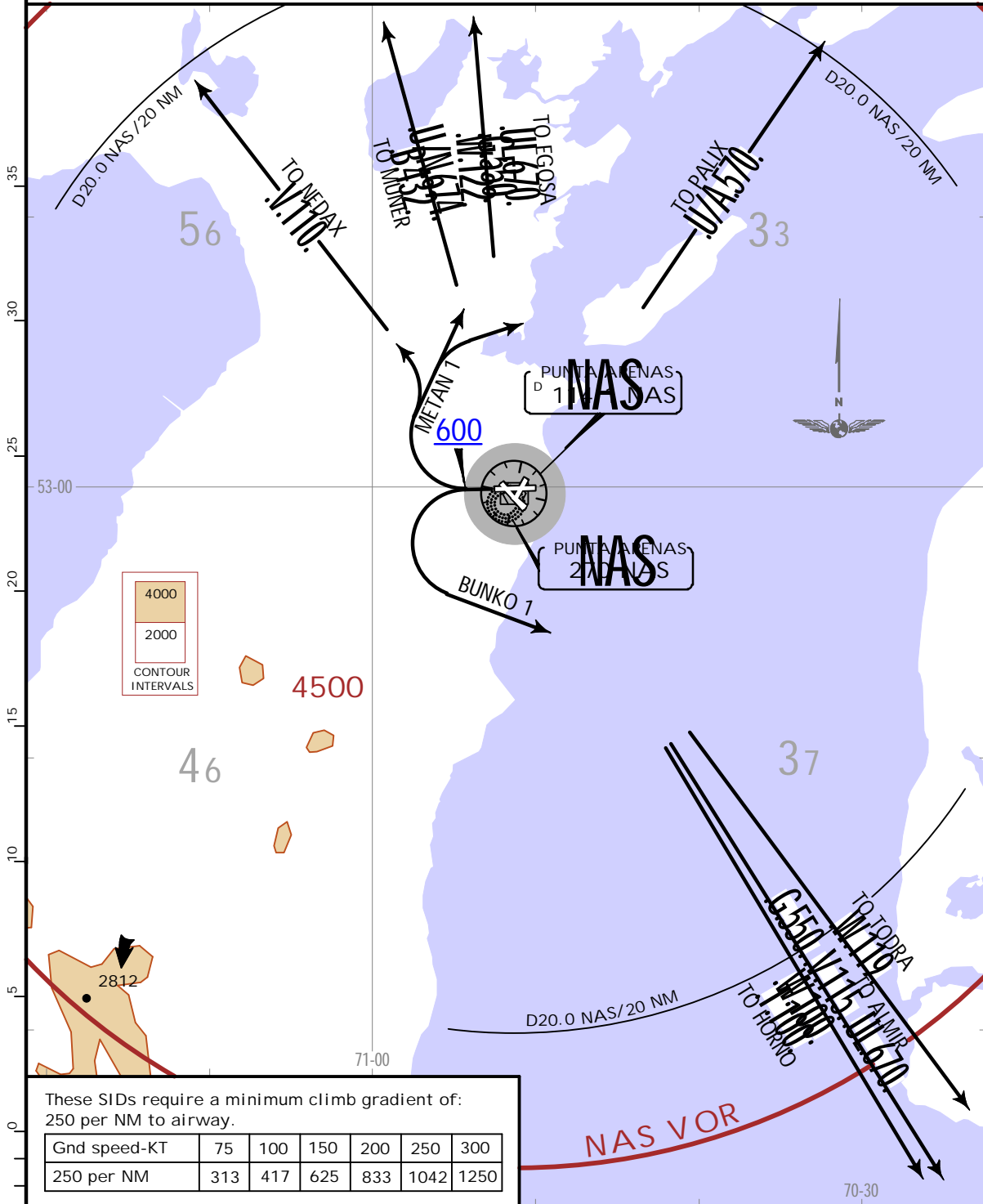
24 JUN 22

PUNTA ARENAS, CHILE

.SID.

Apt Elev 139	Trans alt: 10000
-----------------	------------------

**BUNKO 1, METAN 1
DEPARTURES
(RWY 25)**



These SIDs require a minimum climb gradient of:
250 per NM to airway.

Gnd speed-KT	75	100	150	200	250	300
250 per NM	313	417	625	833	1042	1250

INITIAL CLIMB

Climb on runway heading until 600.

SID	ROUTING
BUNKO 1	Turn LEFT to intercept airways G-550, T-100, UL-670, V-115, W-100, W-119 at D20.0 NAS (or 20 NM) or before, then according to ATC clearance.
METAN 1	Turn RIGHT to intercept airways B-432, G-550, U/A-570, UL-670, U/N-674, V-110, W-122 at D20.0 NAS (or 20 NM) or before, then according to ATC clearance.

SCCI/PUO



PUNTA ARENAS, CHILE

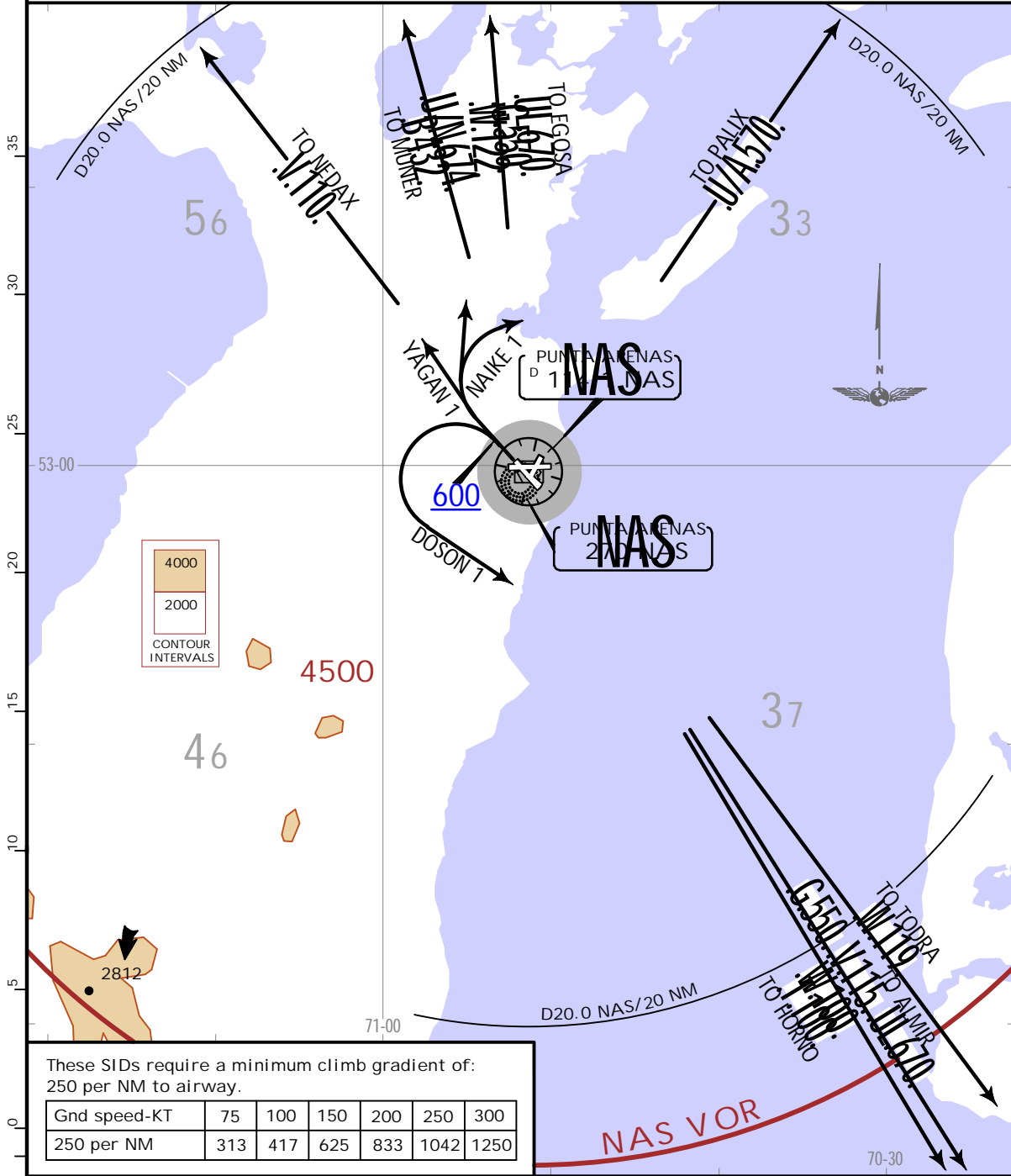
CARLOS IBANEZ DEL CAMPO INTL

(10-3A) 24 JUN 22

.SID.

Apt Elev 139	Trans alt: 10000
-----------------	------------------

DOSON 1, NAIKE 1
YAGAN 1 [YAGAN1]
DEPARTURES
(RWY 30)



These SIDs require a minimum climb gradient of:
250 per NM to airway.

Gnd speed-KT	75	100	150	200	250	300
250 per NM	313	417	625	833	1042	1250

INITIAL CLIMB

Climb on runway heading until 600.

SID	ROUTING
DOSON 1	Turn LEFT to intercept airways G-550, T-100, UL-670, V-115, W-100, W-119 at D20.0 NAS (or 20 NM) or before, then according to ATC clearance.
NAIKE 1	Turn RIGHT to intercept airways B-432, G-550, U/A-570, UL-670, U/N-674, W-122 at D20.0 NAS (or 20 NM) or before, then according to ATC clearance.
YAGAN 1	Intercept airway V-110 according to ATC clearance.

SCCI/PUQ

JEPPESEN

PUNTA ARENAS, CHILE

CARLOS IBANEZ DEL CAMPO INTL

10-3B

24 JUN 22

.RNAV.SID.

Apt Elev 139	Trans alt: 10000
RNAV 1 or RNP 1 approval required GNSS required	

SIRUN 3A RNAV DEPARTURE [SIRU3A] (RWYS 25, 30)



INITIAL CLIMB

Climb on runway heading until 600, then direct to USORI - GEKAM - SIRUN to intercept airway. Cross USORI at or above 2000, GEKAM at or above 5000, SIRUN at or above 7000, then according to ATC clearance.

TEMPORARY DISPLACEMENT OF THR RWY 12 AT CARLOS IBANEZ DEL CAMPO INTL

Due to work planned on TWY A and RWY 12 it is necessary to displace the THR 12 at the AD Carlos Ibanez del Campo by 3937' (1200m), leaving LDA for RWY 12/30 being 3937' (1200m).

For all intents and purposes, the displaced THR 12 will be called THR 13.

1. Technical characteristics of RWY 13/30:

- RWY DESIGNATORS: 13/30
- MAG BRG: 126°/306°
- WIDTH: 148' (45m)
- LENGH: 3937' (1200m)

Declared distances

RWY	TORA	TODA	ASDA	LDA
30	3937'(1200m)	3937'(1200m)	3937'(1200m)	3937'(1200m)
13	3937'(1200m)	3937'(1200m)	3937'(1200m)	3937'(1200m)

RWY strip	984' (300m) of width (492' (150m) each side from the centerline), 3937' (1200m) of length
Surface	Concrete
Elevation	138' (42m)
RWY coordinates	THR 13: S53 00.3 W070 51.4 THR 30: S53 00.8 W070 50.7
RWY lights	RWY 13: REDL RWY 30: REDL, SSALF, PAPI 3.0 Wing Bar RWY 13
Operation hours	24H

2. IFR Air Traffic

- All IFR approaches to Rwy 30 are limited to CAT A and B.
- All IFR approaches to Rwy 12 are NOT available, with exception:
 - (chart 13-4-0) VOR Y Rwy 13, limited to CAT A and B.
- Circling approaches are available, maintaining published minima and existing limitations on the main runway and aircraft category.

3. VFR Air Traffic

VFR air traffic route will be operated in accordance with the procedures of the Air Traffic Services.

4. Other operations and provisions

4.1. Operation of vehicles within the Movement Area

Operators of vehicles within the aerodrome movement area must observe and respect all the signs that limit the area of RWY 13/30, comply with the communications procedures and regulations for the operation of vehicles.

The entry of vehicles on RWY 13/30 will be restricted to those who carry out operational activities, such as:

- RFFS units, in case of emergencies
- Rwy check
- Aviary danger and wildlife control
- RWY lighting check
- Other functions previously coordinated, essential for the operation of the AD.

4.2. Ramp

Aircraft may suffer a possible delay on arrival and take-off, due to eventual congestion on platforms.

It will be restricted according to the following:

- all aircraft that require overnight at the aerodrome, must coordinate at least 24 hours in advance, being subject to availability.

4.3. Occurrences

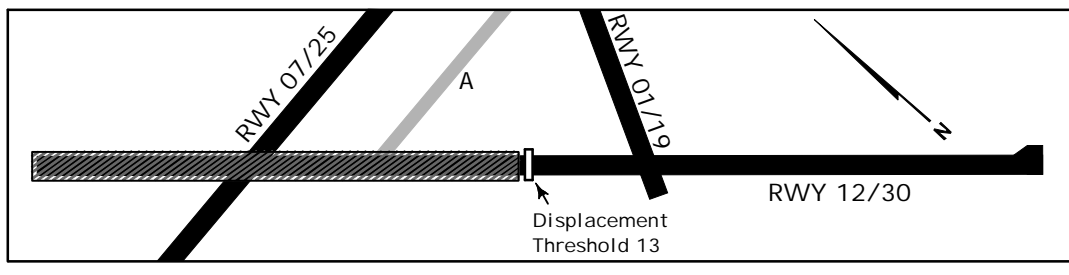
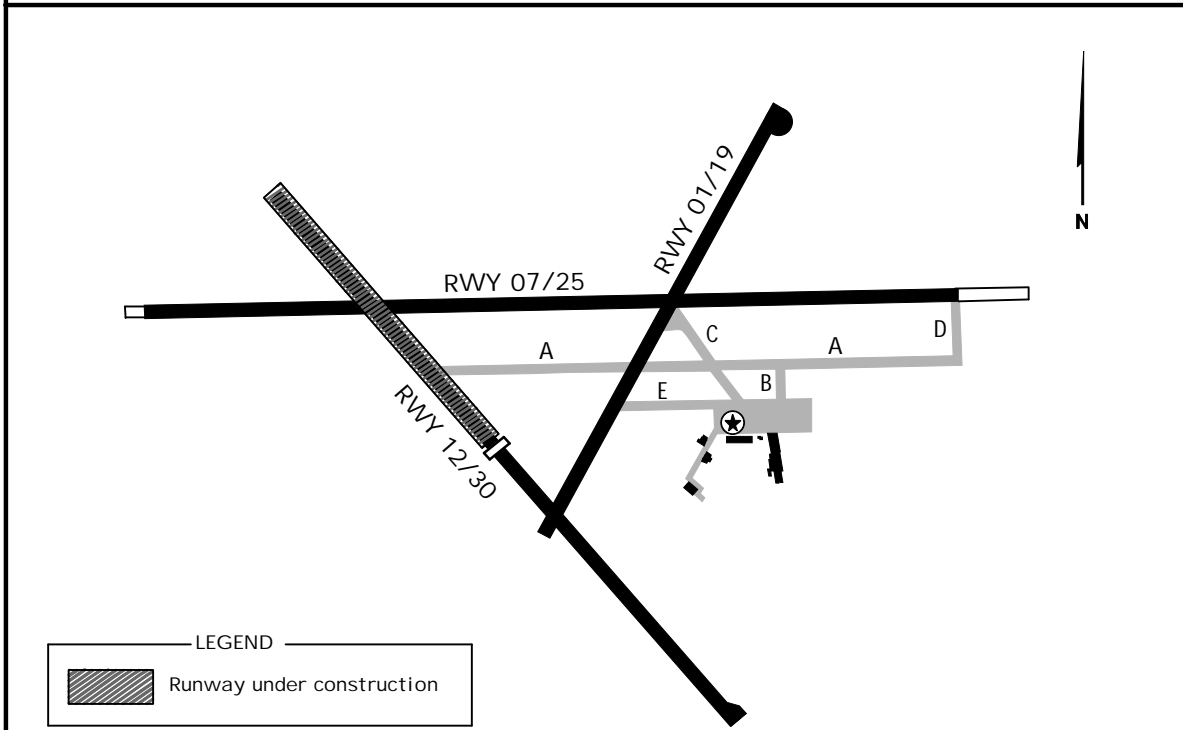
4.3.1. Bomb threat

In the event of a bomb threat, action will be taken in accordance with what is indicated in the security procedures for these events or another area established by the Aerodrome Headquarters.

4.4. Communication

For all purposes of coordination and/or authorizations, both external companies, the Platform Supervisor and any mobile or person who requires access to the Maneuvering Area of the aerodrome, must communicate in both directions with the Control Tower, in the modality and frequencies that are established.

TEMPORARY DISPLACEMENT OF THR RWY 12 AT CARLOS IBANEZ DEL CAMPO INTL (CONTD)



DISPLACEMENT OF THR RWY 25 AT CARLOS IBANEZ DEL CAMPO INTL (SCCI)

Due to construction works on new turning pad it is necessary to displace the THR 25 by 787' (240m).

For all purposes, and while the works are in progress, the displaced THR 25 will be called THR 26 and its coordinates will be S53 00.0 W070 50.2.

1. Technical characteristics of RWY 07/26:

- RWY DESIGNATORS: 07/26
- MAG BRG: 076°/256°
- WIDTH: 148' (45m)
- LENGTH: 8366' (2550m)
- THR 26 COORDINATES: S53 00.0 W070 50.2
- THR 26 ELEVATION: 115' (35m)
- LONGITUDINAL SLOPE: 0.3%
- RWY LIGHTS: PAPI 3.0^, wing bar at THR 26, runway edge lights, RWY 07 threshold lights
- RWY MARKINGS: threshold, axis, edges, touchdowns, aiming points
- APPROACH TYPE: non-precision instrumental

Declared distances

RWY	TORA	TODA	ASDA	LDA
07	9154'(2790m)	9154'(2790m)	9154'(2790m)	9154'(2790m)
26	9154'(2790m)	9350'(2850m)	9350'(2850m)	8366'(2550m)

2. IFR Air Traffic

The control procedures for arriving/departing IFR aircraft will be those established in DAP 11 00.

2.1 Arrivals

STARs to be used for RWY 26 will be those currently published for RWY 25 in the AIP CHILE VOL II manual.

2.2 Approaches

While the works are in progress, the RWY 25 ILS system will remain with only LOC and DME operational.

While RWY 26 is in use, approaches serving RWY 25 are placed in 'unusable' status. The approaches available for RWY 26 may be used from the moment when THR 26 comes into operation.

2.3 Departures

Aircraft will take-off from RWY 26 to intercept the departure procedures published for RWY 25 in the AIP CHILE VOL II GEN 2.13 manual and supplemented by NOTAM and webpage as appropriate.

3. VFR Air Traffic

According to RWY 25 procedures.

4. Other operations and provisions

4.1 Aircraft may experience possible delays during approach, arrival and take-off, due to:

- Increased runway occupation time
- Decrease in the number of available taxiways
- Eventual platform congestion.

4.2 Operators of vehicles within the aerodrome movement area must observe and respect all the signs that limit the area of RWY 07/26, comply with the communications procedures and regulations for the operation of vehicles.

The entry of vehicles on RWY 07/26 will be restricted to those who carry out operational activities, such as:

- RFFS units, in case of emergencies
- Rwy check
- Aviary danger and wildlife control
- RWY lighting check

- Other functions previously coordinated, essential for the operation of the AD.

4.3 All aircraft that require overnight at the aerodrome, must coordinate at least 24 hours in advance, being subject to availability.

4.4 In the event of a bomb threat, action will be taken in accordance with what is indicated in the security procedures for these events or another area established by the Aerodrome Headquarters.

4.5 For all purposes of coordination and/or authorizations, both external companies, the Platform Supervisor and any mobile or person who requires access to the Maneuvering Area of the aerodrome, must communicate in both directions with the Control Tower, in the modality and frequencies that are established.

5. Validity

Information included above will be valid for the duration of the works in the THR 25 sector. The period foreseen for the development of these works is from 26th September 2022 to 25th March 2023.

Without prejudice to the foregoing, the start and end date of the works, as well as any modification of the information detailed in this document, will be notified by NOTAM.

SCCI/PUQ

Apt Elev 139
S53 00.2 W070 51.2

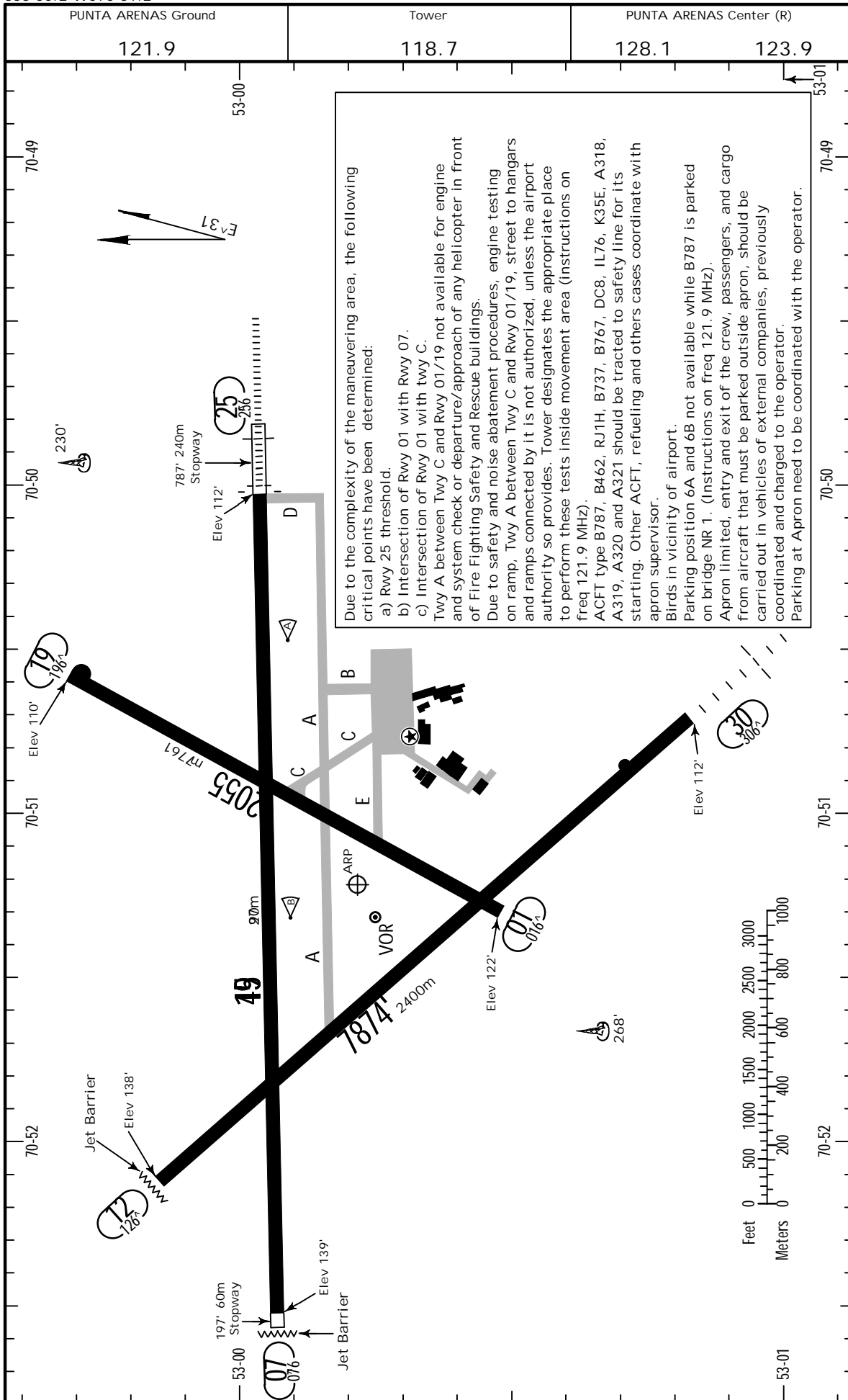
JEPPesen

3 MAR 23

10-9

PUNTA ARENAS, CHILE

CARLOS IBANEZ DEL CAMPO INTL



SCCI/PUQ
139

Apt Elev 139
S53 00.2 W070 51.2

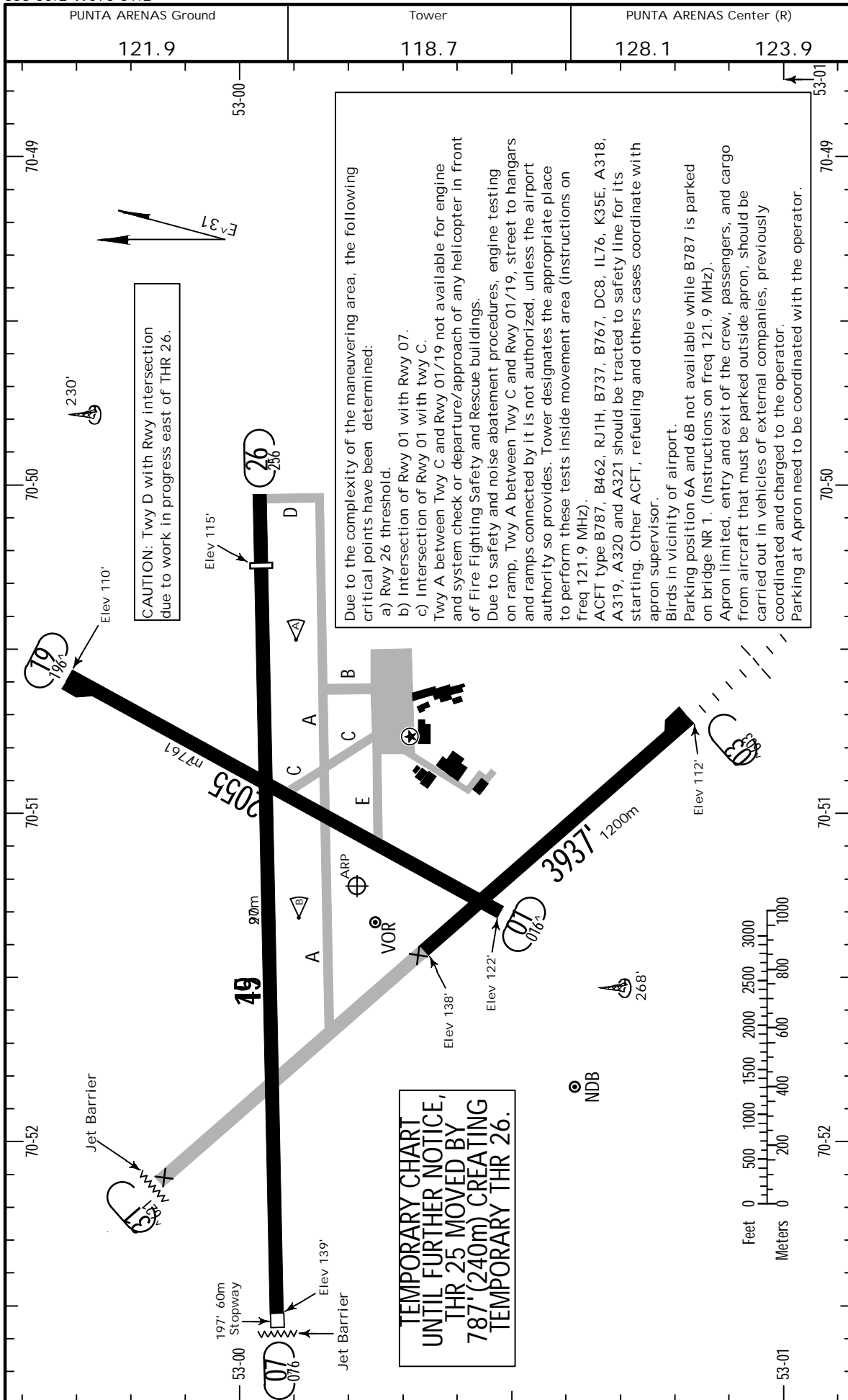
JEPPESSEN

3 MAR 23

10-9-0

PUNTA ARENAS, CHILE

CARLOS IBANEZ DEL CAMPO INTL



SCCI/PUQ



PUNTA ARENAS, CHILE

3 MAR 23

10-9A

CARLOS IBANEZ DEL CAMPO INTL

- CAUTION: Rwy 07 right strip reduction: initial 780m to 100m. Instructions from PUNTA ARENAS Tower or Ground.
- CAUTION: Rwy 01/19, 3 structure wind farm 410' (125m) AGL at 6.1 KM north of THR 19 at the following coordinates: S52 56.4 W070 50.2, S52 56.2 W070 50.8, S52 56.0 W070 49.6. Instructions from PUNTA ARENAS Tower or Ground.
- CAUTION: 3 structure wind farm 243' (74m) AGL at 4.8 KM north of THR 19 at the following coordinates: S52 56.9 W070 49.7, S52 57.0 W070 49.8, S52 57.1 W070 49.8.
- CAUTION: Three aeronautical antennas at 2175' (663m) SW THR 01, penetrate SFC transition.
- CAUTION: Three poles (electricity) 13' (4m), unmarked, at 1526' (465m) THR 30, SSW sector, interfere with SFC APCH / DEP at approximately 1.5 NM.
- CAUTION: Copa de Agua (not signposted) at 2828' (862m) SW THR 01 penetrating the SFC APCH / DEP by 0.22%.
- CAUTION: Trees 13' (4m) high, affecting 2 percent slope of approach surface of Rwy 07 and Rwy 19.
- CAUTION: Trees 13' (4m) at 328' (100m) North THR 19, penetrate SFC APCH / DEP, in 10' (3m).
- CAUTION: Obstacles, trees and terrain that penetrate the SFC APCH/DEP and exceed it by:
Tree at 397' (121m) THR 12, by 3.6%. Tree at 696' (212m) THR 12, by 1.4%. Tree at approximately 984' (300m) from THR 12, by 0.3%.
- CAUTION: Three 26' (8m) electricity poles (not marked) at 1526' (465m) SSW sector of THR 30, interfere with SFC APCH / DEP at approximately 1.5 NM.
- CAUTION: Ground and shrubs at 509' (155m) SE THR 25, exceed SFC APCH / DEP by 1%.
- CAUTION: Land depression 13' (4m) deep between 328' (100m) and 656' (200m) initial to the right strip of Rwy 07.
- CAUTION: Obstacle 4.6' (1.4m) high, located 230' (70m) from Rwy 07 centerline in northeast sector of THR 07.
- CAUTION: Signpost on Rwy 07 3.3' (1m) located 184' (56m) before THR 07 and 85' (26m) both sides of Rwy.
- CAUTION: Signpost on Rwy 12 3.3' (1m) located 180' (55m) before THR 12 and 75' (23m) both sides of Rwy.
- CAUTION: Strip southern sector of RWY 07/25 due to electrical cameras 1' (0.2m) above ground level.
- CAUTION: FACH hangars and embankment at 587' (179m) THR 30, exceed the permitted grade by 8' (2.4m).
- CAUTION: Obstacle for Rwy 01/19, electric line posts 34' (10.5m) high, located 984' (300m) north-northeast of THR 19.
- CAUTION: Wind measurement tower 397' (121.035m) located at 21.2km NW from airport at the following coordinates: S52 51.6 W071 03.6.

ADDITIONAL RUNWAY INFORMATION

RWY		USABLE LENGTHS		TAKE-OFF	WIDTH
		Threshold	Landing Beyond Glide Slope		
01					148'
19	HIRL				45m
07	HIRL REIL PAPI-L (angle 3.0°) RVR				148'
25	HIRL ALSF-I PAPI-L (angle 3.0°) RVR		8222' 2506m		45m
12	RL REIL				148'
30	RL SSALF PAPI-L (angle 3.0°)				45m

TAKE-OFF

Rwys 01, 07, 12, 25, 30				Rwy 19	
Take-off Alternate Apt. Filed			Take-off Alternate Apt. not Filed	Take-off Alternate Apt. not Filed	
HIRL & RCLM	RL or RCLM	STD			
1 Eng	1.6 km or Higher Available Landing Minimums			200m -2.4 km or Higher Available Landing Minimums	
2 Eng	1 hr alternate (1 Eng inop) 0.4 km	1 hr alternate (1 Eng inop) 0.8 km	1.6 km	Available Landing	Available Landing
3 & 4 Eng	2 hr alternate (1 Eng inop) 0.4 km	2 hr alternate (1 Eng inop) 0.8 km	Minimums	200m -2.4 km	Minimums

FOR FILING AS ALTERNATE

	Based on expected IAP's to be used at Alternate Airport for ETA
CEILING	(Highest DH/MDH from available IAP's) DH/MDH + 200'
VISIBILITY	(Highest applicable VIS from available IAP's) APCH VIS + 800m

SCCI/PUQ



PUNTA ARENAS, CHILE

3 MAR 23

10-9A-0

CARLOS IBANEZ DEL CAMPO INTL

TEMPORARY CHART UNTIL FURTHER NOTICE, THR 25 MOVED BY 787' (240m) CREATING TEMPORARY THR 26.

- CAUTION: Rwy 07 right strip reduction: initial 780m to 100m. Instructions from PUNTA ARENAS Tower or Ground.
- CAUTION: Rwy 01/19, 3 structure wind farm 410' (125m) AGL at 6.1 KM north of THR 19 at the following coordinates: S52 56.4 W070 50.2, S52 56.2 W070 50.8, S52 56.0 W070 49.6. Instructions from PUNTA ARENAS Tower or Ground.
- CAUTION: 3 structure wind farm 243' (74m) AGL at 4.8 KM north of THR 19 at the following coordinates: S52 56.9 W070 49.7, S52 57.0 W070 49.8, S52 57.1 W070 49.8.
- CAUTION: Three aeronautical antennas at 2175' (663m) SW THR 01, penetrate SFC transition.
- CAUTION: Three poles (electricity) 13' (4m), unmarked, at 1526' (465m) THR 30, SSW sector, interfere with SFC APCH / DEP at approximately 1.5 NM.
- CAUTION: Copa de Agua (not signposted) at 2828' (862m) SW THR 01 penetrating the SFC APCH / DEP by 0.22%.
- CAUTION: Trees 13' (4m) high, affecting 2 percent slope of approach surface of Rwy 07 and Rwy 19.
- CAUTION: Trees 13' (4m) at 328' (100m) North THR 19, penetrate SFC APCH / DEP, in 10' (3m).
- CAUTION: Obstacles, trees and terrain that penetrate the SFC APCH/DEP and exceed it by:
Tree at 397' (121m) THR 13, by 3.6%. Tree at 696' (212m) THR 13, by 1.4%. Tree at approximately 984' (300m) from THR 13, by 0.3%.
- CAUTION: Three 26' (8m) electricity poles (not marked) at 1526' (465m) SSW sector of THR 30, interfere with SFC APCH / DEP at approximately 1.5 NM.
- CAUTION: Ground and shrubs at 509' (155m) SE THR 26, exceed SFC APCH / DEP by 1%.
- CAUTION: Land depression 13' (4m) deep between 328' (100m) and 656' (200m) initial to the right strip of Rwy 07.
- CAUTION: Obstacle 4.6' (1.4m) high, located 230' (70m) from Rwy 07 centerline in northeast sector of THR 07.
- CAUTION: Signpost on Rwy 07 3.3' (1m) located 184' (56m) before THR 07 and 85' (26m) both sides of Rwy.
- CAUTION: Signpost on Rwy 13 3.3' (1m) located 180' (55m) before THR 13 and 75' (23m) both sides of Rwy.
- CAUTION: Strip southern sector of RWY 07/26 due to electrical cameras 1' (0.2m) above ground level.
- CAUTION: FACH hangars and embankment at 587' (179m) THR 30, exceed the permitted grade by 8' (2.4m).
- CAUTION: Obstacle for Rwy 01/19, electric line posts 34' (10.5m) high, located 984' (300m) north-northeast of THR 19.
- CAUTION: Wind measurement tower 397' (121.035m) located at 21.2km NW from airport at the following coordinates: S52 51.6 W071 03.6.

ADDITIONAL RUNWAY INFORMATION				
RWY	LANDING BEYOND	USABLE LENGTHS		WIDTH
		Threshold	Glide Slope	
01 19	HIRL			148' 45m
07 26	RL REIL PAPI-L (angle 3.0^)	RVR		148' 45m
	RL PAPI-L (angle 3.0^)	RVR	8366' 2550m	
13 30	RL			148' 45m
	RL SSALF PAPI-L (angle 3.0^)			

TAKE-OFF						
Rwys 01, 07, 13, 26, 30				Rwy 19		
Take-off Alternate Apt. Filed				Take-off Alternate Apt. not Filed		Take-off Alternate Apt. not Filed
HIRL & RCLM		RL or RCLM		STD		
1 Eng	1.6 km or Higher Available Landing Minimums			200m -2.4 km or Higher Available Landing Minimums		
2 Eng	1 hr alternate (1 Eng inop) 0.4 km	1 hr alternate (1 Eng inop) 0.8 km	1.6 km	Available Landing		Available Landing
3 & 4 Eng	2 hr alternate (1 Eng inop) 0.4 km	2 hr alternate (1 Eng inop) 0.8 km		Minimums		Minimums

FOR FILING AS ALTERNATE	
	Based on expected IAP's to be used at Alternate Airport for ETA
CEILING	(Highest DH/MDH from available IAP's) DH/MDH + 200'
VISIBILITY	(Highest applicable VIS from available IAP's) APCH VIS + 800m

SCCI/PUQ

JEPPESEN

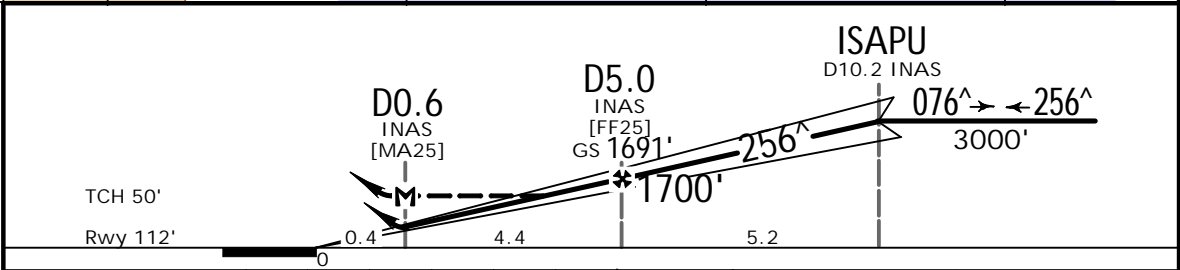
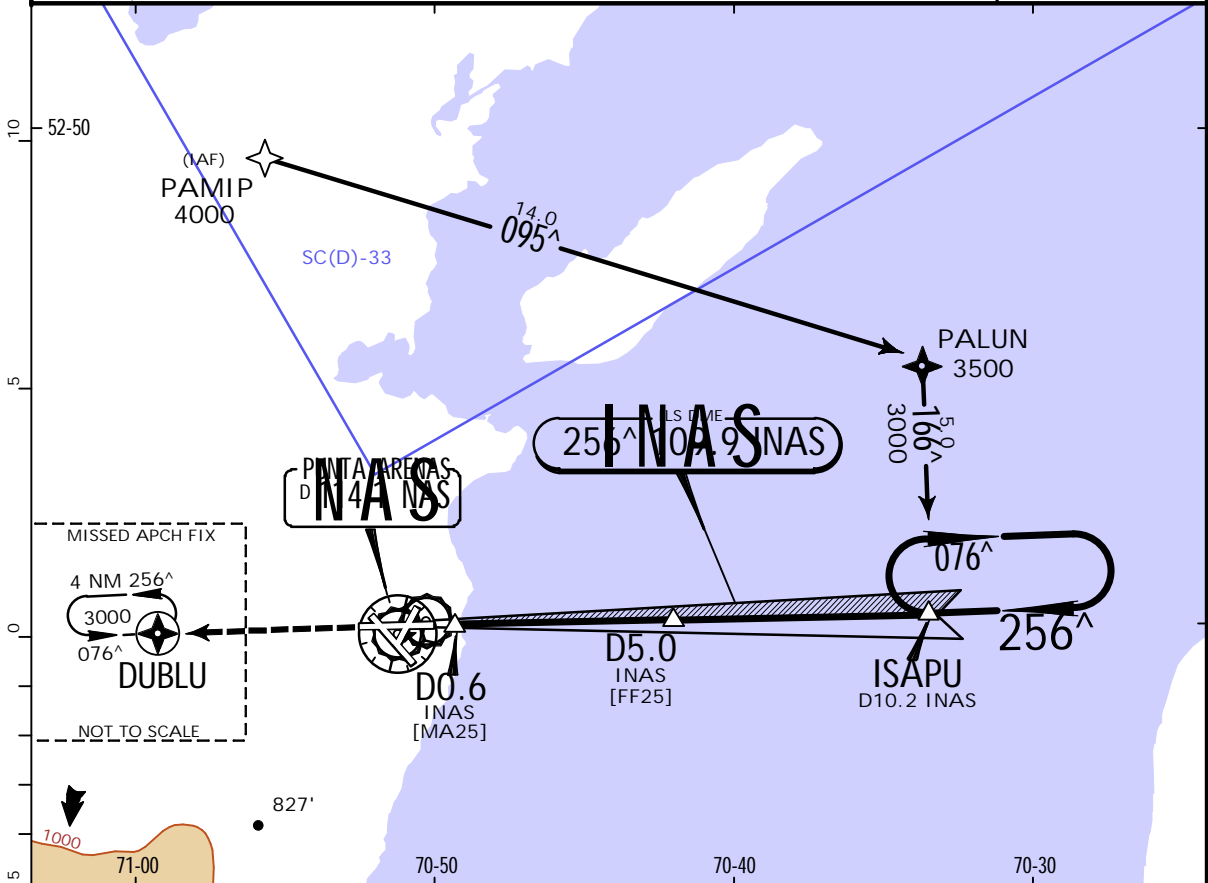
PUNTA ARENAS, CHILE
ILS X Rwy 25

CARLOS IBANEZ DEL CAMPO INTL

11-1

5 AUG 22
Eff. 11 Aug.

PUNTA ARENAS Center (R) 128.1 123.9			PUNTA ARENAS Tower 118.7		Ground 121.9
LOC INAS 109.9	Final Apch Crs 256 [^]	D5.0 INAS 1691' (1579')	ILS DA(H) 312' (200')	Apt Elev 139' Rwy 112'	4500 MSA NAS VOR
MISSED APCH: Climb to 3000' direct to DUBLU and enter hold or according to ATC clearance.					
Alt Set: hPa		Rwy Elev: 4 hPa	Trans level: By ATC	Trans alt: 10000'	
RNAV 1 or RNP 1 required. GNSS required.					



Gnd speed-Kts	70	90	100	120	140	160	ALSF-I PAPI 3000' D → DUBLU	
GS	3.00 [^]	372	478	531	637	743		849
MAP at D0.6 INAS								
FAF to MAP	4.4	3:46	2:56	2:38	2:12	1:53	1:39	

STRAIGHT-IN LANDING RWY 25				CIRCLE-TO-LAND	
1 ILS DA(H) 312' (200')		1 LOC (GS out) MDA(H) 380' (268')			
FULL		ALS out		ALS out	
A				Max Kts	MDA(H)
B	RVR 750m or 0.8 km	1.2 km	0.8 km	90	640'(501') - 1.6 km
C			1.6 km	120	800'(661') - 2.8 km
D		1.2 km		140	960'(821') - 4.4 km

1 Procedure not authorized without INAS DME.

SCCI/PUO

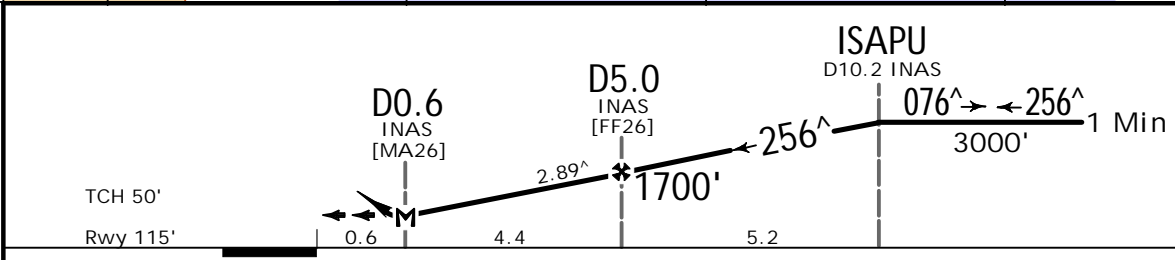
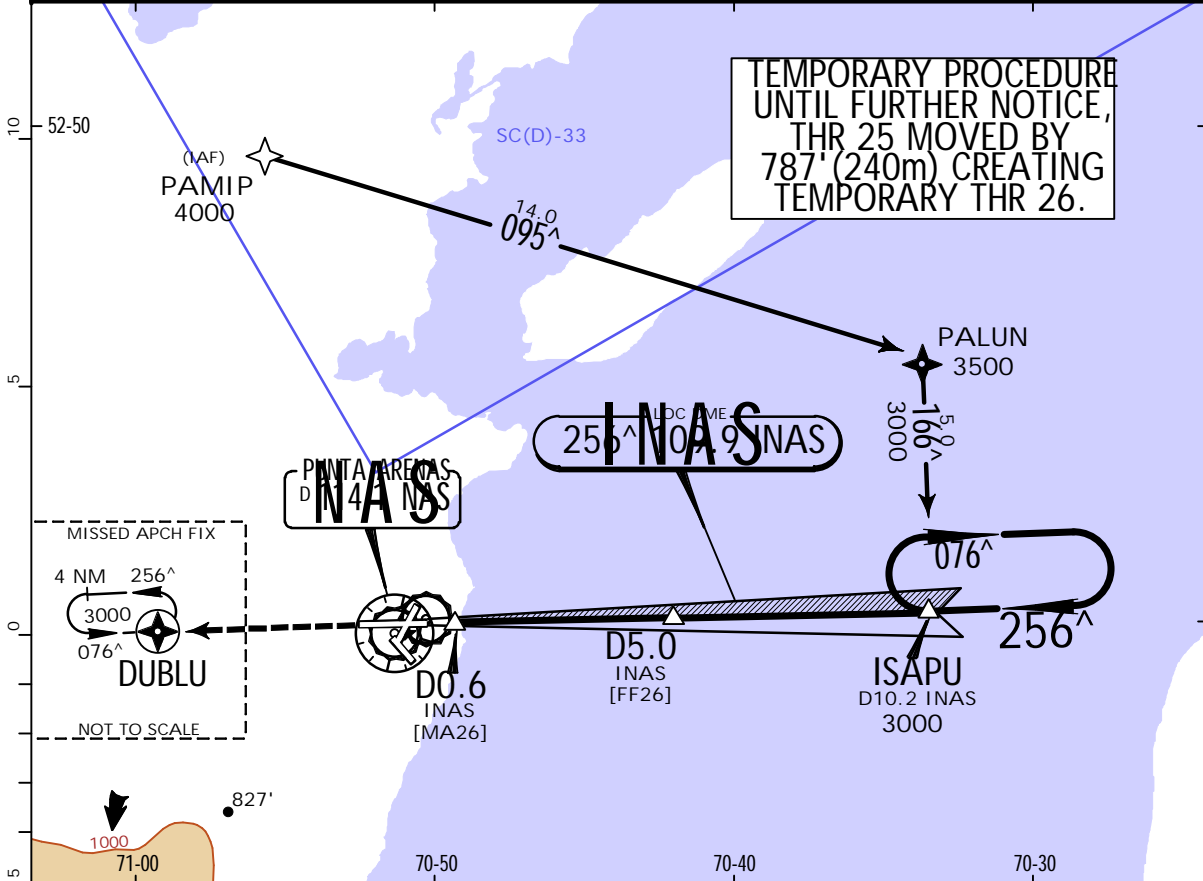
JEPPESEN

PUNTA ARENAS, CHILE
LOC X Rwy 26

CARLOS IBANEZ DEL CAMPO INTL

11-1-0 16 SEP 22
Eff. 26.Sep.

PUNTA ARENAS Center (R) 128.1 123.9		PUNTA ARENAS Tower 118.7		Ground 121.9	
LOC INAS 109.9	Final Apch Crs 256 [^]	D5.0 INAS 1700' (1585')	MDA(H) 380' (265')	Apt Elev 139' Rwy 115'	
MISSED APCH: Climb to 3000' direct to DUBLU, enter holding 076 [^] or according to ATC clearance.				4500	
Alt Set: hPa		Rwy Elev: 4 hPa	Trans level: By ATC		Trans alt: 10000'
RNAV 1 or RNP 1 required.					MSA NAS VOR
GNSS required.					



Gnd speed-Kts	70	90	100	120	140	160	PAPI-L	3000'	D	DUBLU
Descent Angle	2.89 [^]	358	460	511	613	716				
MAP at D0.6 INAS										

STRAIGHT-IN LANDING RWY 26						CIRCLE-TO-LAND					
1 MDA(H) 380' (265')						Max Kts					
A	1.6 km					90	640'(501') -1.6 km				
B						120	800'(661') -2.8 km				
C						140	960'(821') -4.4 km				
D						165					
1 Procedure not authorized without INAS DME.											

SCCI/PUO

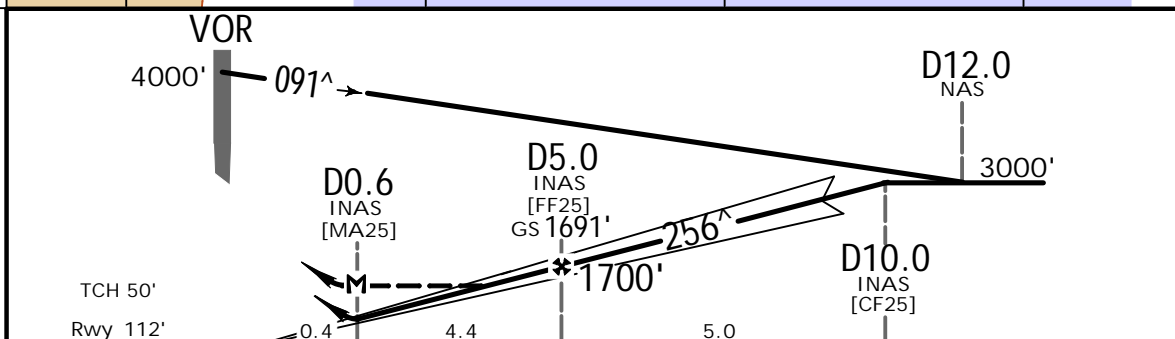
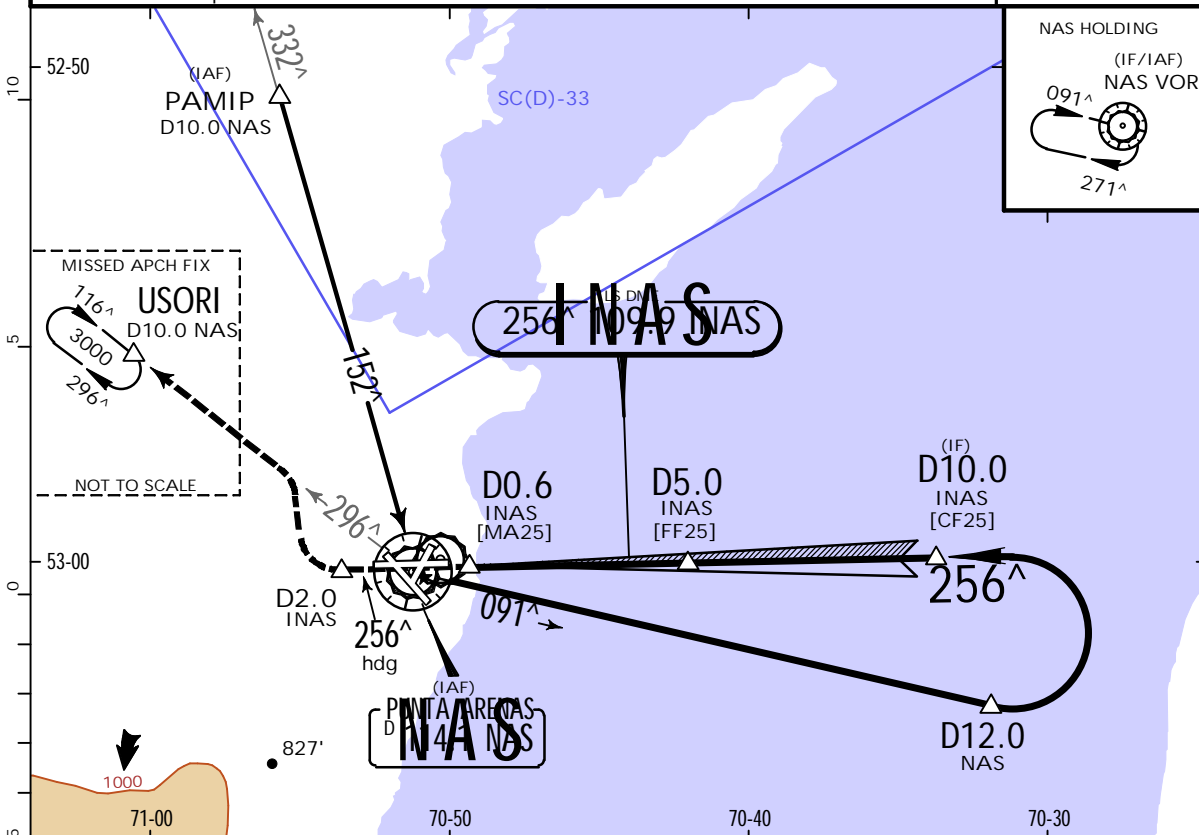
CARLOS IBANEZ DEL CAMPO INTL



11-2 5 AUG 22
Eff. 11 Aug.

PUNTA ARENAS, CHILE ILS Y Rwy 25

PUNTA ARENAS Center (R) 128.1 123.9			PUNTA ARENAS Tower 118.7		Ground 121.9
LOC INAS 109.9	Final Apch Crs 256[^]	D5.0 INAS 1691' (1579')	ILS DA(H) 312' (200')	Apt Elev 139' Rwy 112'	 4500 MSA NAS VOR
MISSED APCH: Climb on heading 256 [^] until D2.0 INAS, turn RIGHT and continue climbing to 3000' to intercept NAS VOR R-296 outbound, direct to USORI then according to ATC clearance.					
ALT Set: hPa Rwy Elev: 4 hPa Trans level: By ATC Trans alt: 10000' VOR and DME required.					



Gnd speed-Kts	70	90	100	120	140	160	ALSF-I PAPI ↑ on 256 [^] hdg D2.0 INAS
GS	3.00 [^]	372	478	531	637	743	
MAP at D0.6 INAS							
FAF to MAP	4.4	3:46	2:56	2:38	2:12	1:53	

STRAIGHT-IN LANDING RWY25				CIRCLE-TO-LAND	
1 ILS DA(H) 312' (200')		1 LOC (GS out) MDA(H) 380' (268')		Max Kts	
FULL	ALS out	FULL	ALS out	90	640'(501') - 1.6 km
A				120	
B	RVR 750m or 0.8 km	1.2 km	1.6 km	140	800'(661') - 2.8 km
C				165	
D		1.2 km			960'(821') - 4.4 km

1 Procedure not authorized without INAS DME.
 CHANGES: Minimums. | JEPPesen, 2001, 2022. ALL RIGHTS RESERVED.

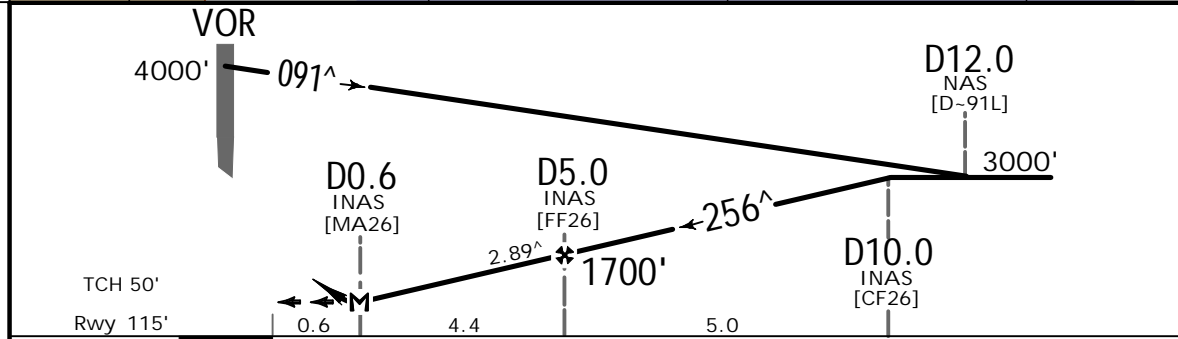
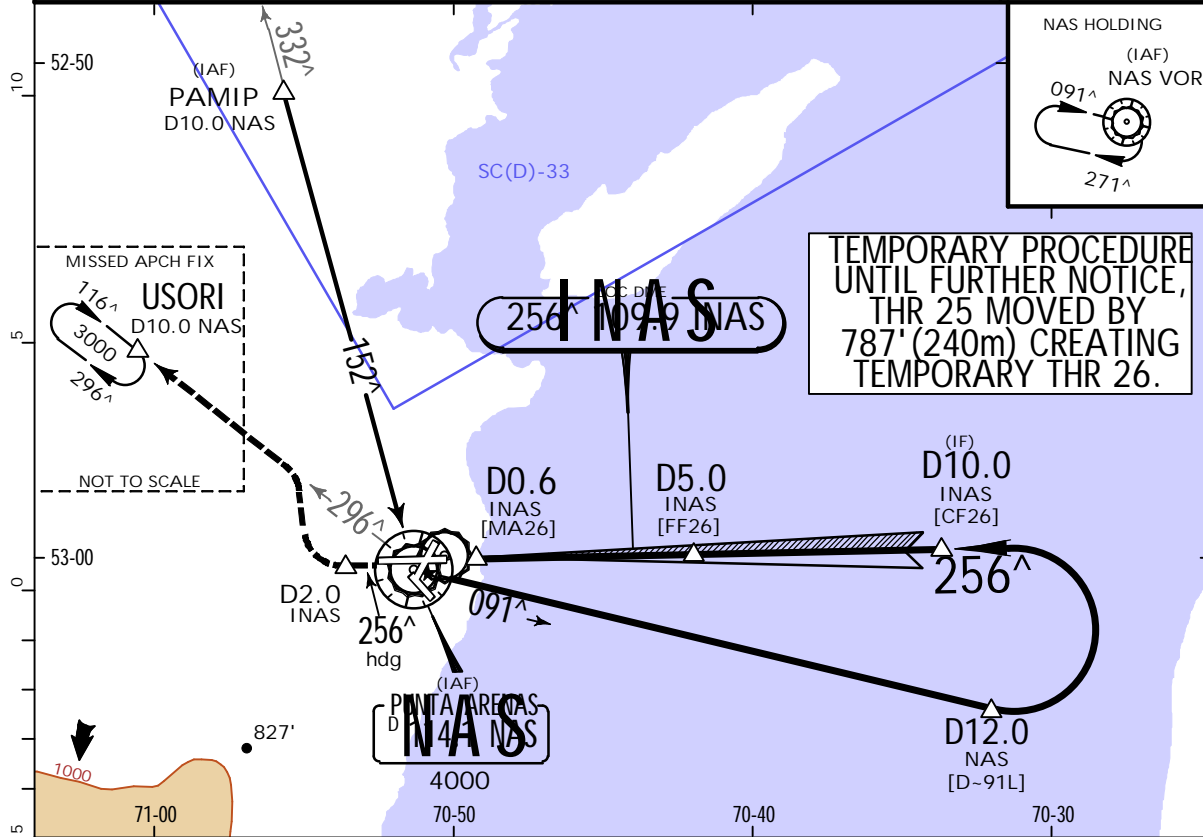
SCCI/PUO



PUNTA ARENAS, CHILE
LOC Y Rwy 26

CARLOS IBANEZ DEL CAMPO INTL (11-2-0) 14 OCT 22

PUNTA ARENAS Center (R) 128.1 123.9			PUNTA ARENAS Tower 118.7		Ground 121.9
LOC INAS 109.9	Final Apch Crs 256 [^]	D5.0 INAS 1700' (1585')	MDA(H) 380' (265')	Apt Elev 139' Rwy 115'	4500 MSA NAS VOR
MISSED APCH: Climb on heading 256 [^] until D2.0 INAS, turn RIGHT and continue climbing to 3000' to intercept NAS VOR R-296 outbound, direct to USORI then according to ATC clearance.					
Alt Set: hPa			Rwy Elev: 4 hPa	Trans level: By ATC	Trans alt: 10000'
VOR and DME required.					NAS HOLDING (IAF) NAS VOR 091 [^] 271 [^]



Gnd speed-Kts	70	90	100	120	140	160	PAPI-L	256 [^] on hdg	D2.0 INAS
Descent Angle 2.89 [^]	358	460	511	613	716	818			
MAP at D0.6 INAS									

STRAIGHT-IN LANDING RWY26			CIRCLE-TO-LAND		
1 MDA(H) 380' (265')					
A	1.6 km		Max Kts	MDA(H)	
B			90	640'(501') - 1.6 km	
C			120	800'(661') - 2.8 km	
D			140	960'(821') - 4.4 km	
1 Procedure not authorized without INAS DME.					

SCCI/PUQ

CARLOS IBANEZ DEL CAMPO INTL



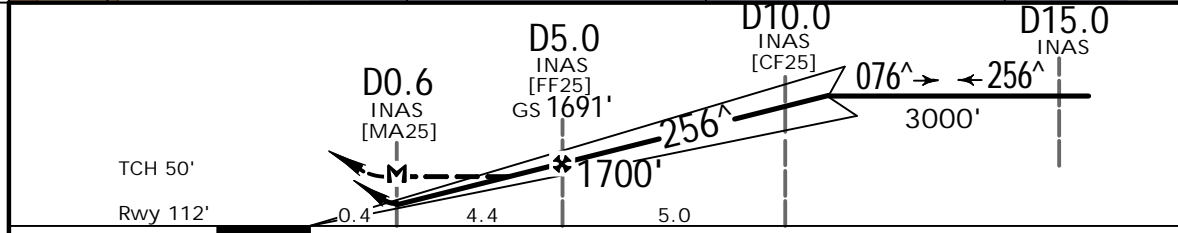
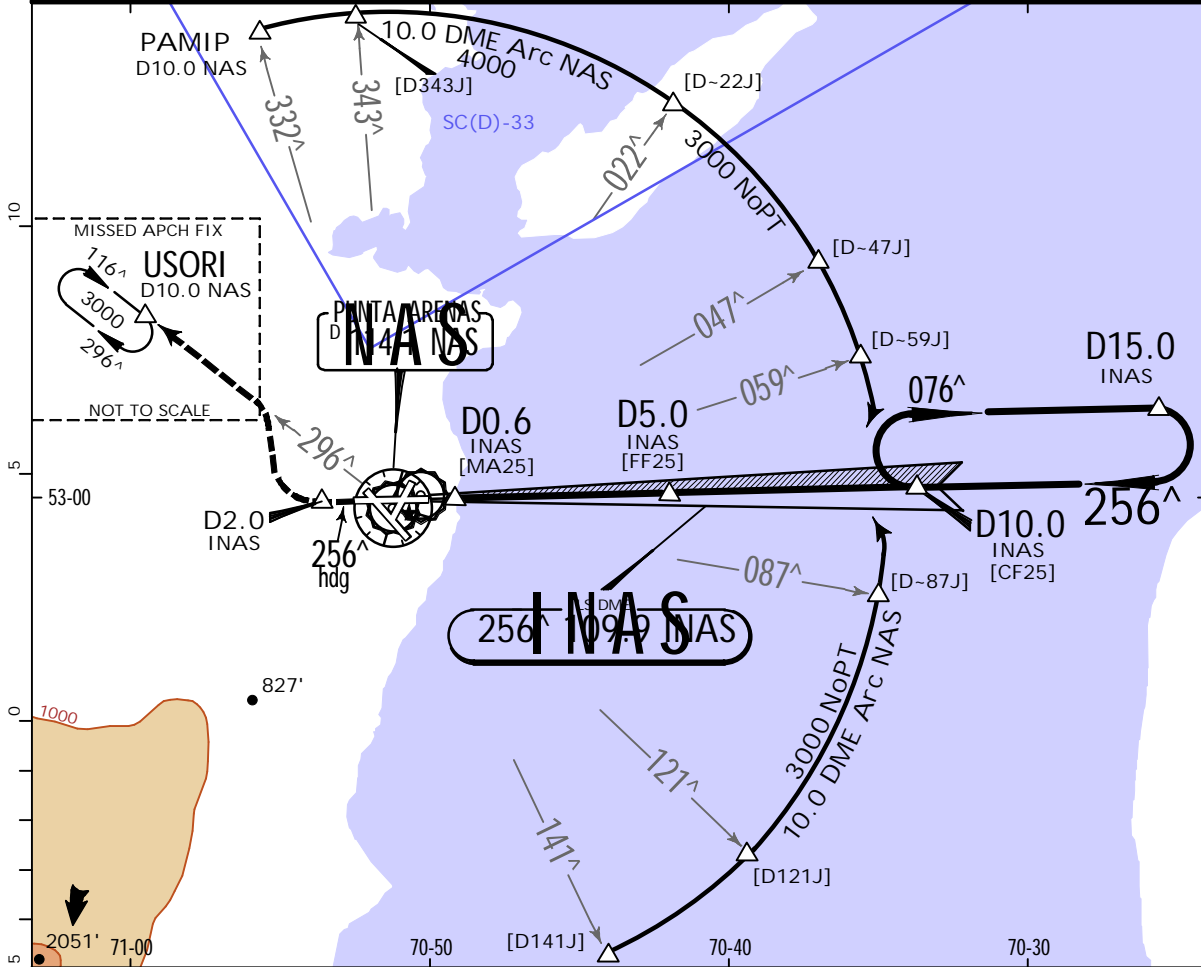
11-3

5 AUG 22
Eff. 11 Aug.

PUNTA ARENAS, CHILE

ILS Z Rwy 25

PUNTA ARENAS Center (R) 128.1 123.9			PUNTA ARENAS Tower 118.7		Ground 121.9
LOC INAS 109.9	Final Apch Crs 256[^]	D5.0 INAS 1691' (1579')	ILS DA(H) 312' (200')	Apt Elev 139'	4500
Rwy 112'					
MISSED APCH: Climb on heading 256 [^] until D2.0 INAS, turn RIGHT and continue climbing to 3000' to intercept NAS VOR R-296 outbound, direct to USORI, then according to ATC clearance.					MSA NAS VOR
Alt Set: hPa		Rwy Elev: 4 hPa	Trans level: By ATC		
VOR and DME required.		Trans alt: 10000'			



Gnd speed-Kts	70	90	100	120	140	160	ALSF-I PAPI	↑ on 256 [^] hdg	D2.0 INAS	
GS	3.00 [^]	372	478	531	637	743				849
MAP at D0.6 INAS										
FAF to MAP	4.4	3:46	2:56	2:38	2:12	1:53				1:39

STRAIGHT-IN LANDING RWY25				CIRCLE-TO-LAND	
1 ILS DA(H) 312' (200')		1 LOC (GS out) MDA(H) 380' (268')		Max Kts	
FULL		ALS out		MDA(H)	
A				90	640'(501') -1.6 km
B	RVR 750m or 0.8 km	1.2 km	0.8 km	120	800'(661') -2.8 km
C			1.6 km	140	
D			1.2 km	165	960'(821') -4.4 km

1 Procedure not authorized without INAS DME.

SCCI/PUQ

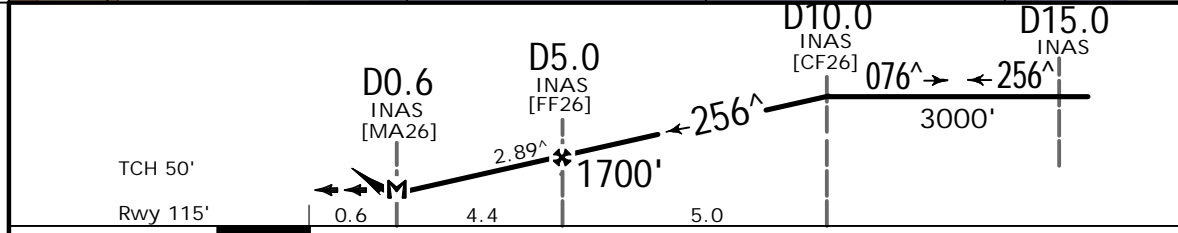
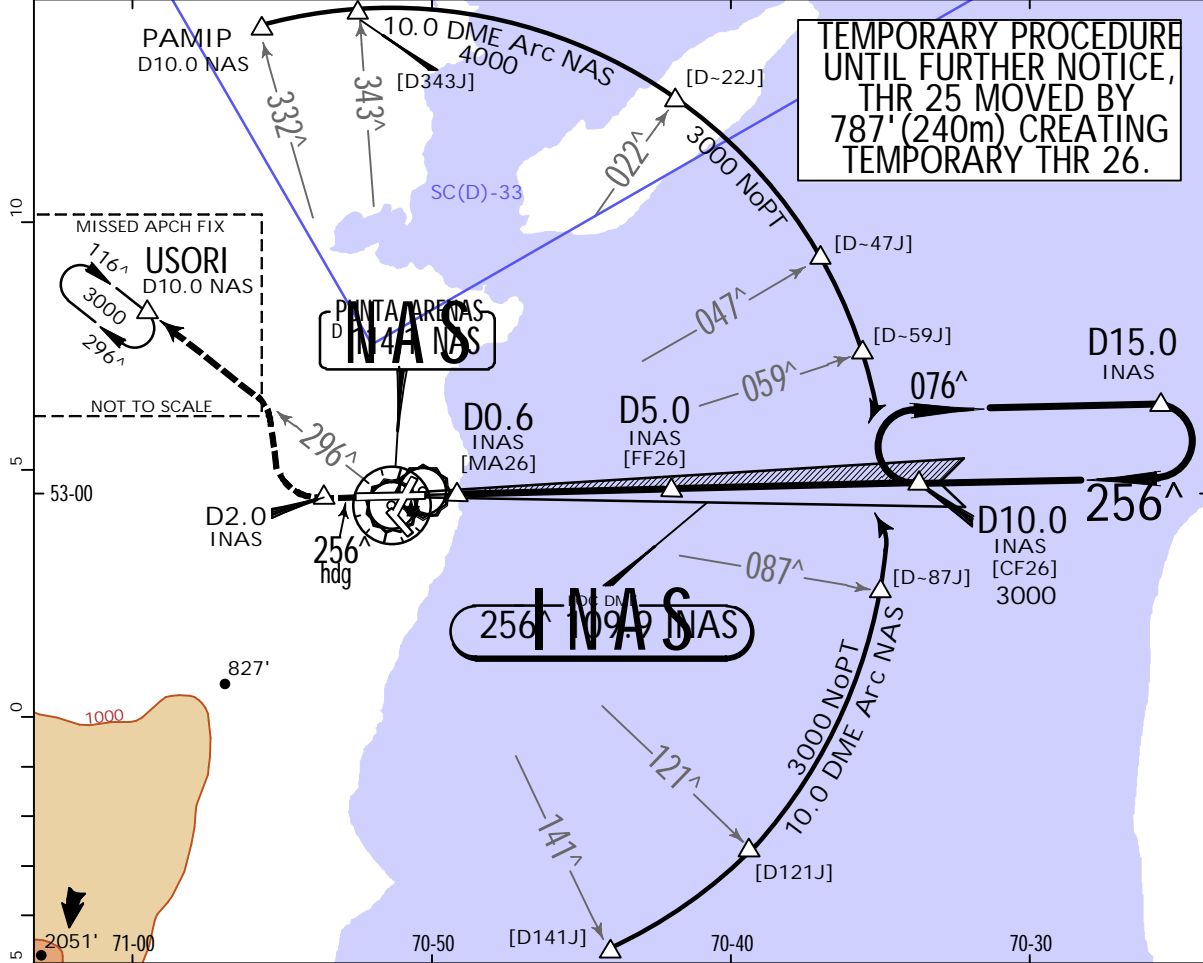


PUNTA ARENAS, CHILE
LOC Z Rwy 26

CARLOS IBANEZ DEL CAMPO INTL

(11-3-0) 14 OCT 22

PUNTA ARENAS Center (R) 128.1 123.9			PUNTA ARENAS Tower 118.7		Ground 121.9
LOC INAS 109.9	Final Apch Crs 256 [^]	D5.0 INAS 1700' (1585')	MDA(H) 380' (265')	Apt Elev 139' Rwy 115'	4500 MSA NAS VOR
MISSED APCH: Climb on heading 256 [^] until D2.0 INAS, turn RIGHT and continue climbing to 3000' to intercept NAS VOR R-296 outbound, direct to USORI, then according to ATC clearance.					
Alt Set: hPa		Rwy Elev: 4 hPa	Trans level: By ATC	Trans alt: 10000'	
VOR and DME required.					



Gnd speed-Kts	70	90	100	120	140	160	PAPI-L	↑ on 256 [^] hdg	D2.0 INAS
Descent Angle 2.89 [^]	358	460	511	613	716	818			
MAP at D0.6 INAS									

STRAIGHT-IN LANDING RWY 26		CIRCLE-TO-LAND	
1 MDA(H) 380' (265')			
1.6 km		Max Kts	MDA(H)
A		90	640' (501') - 1.6 km
B		120	800' (661') - 2.8 km
C		140	960' (821') - 4.4 km
D		165	

1 Procedure not authorized without INAS DME.

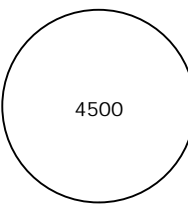
SCCI/PUQ

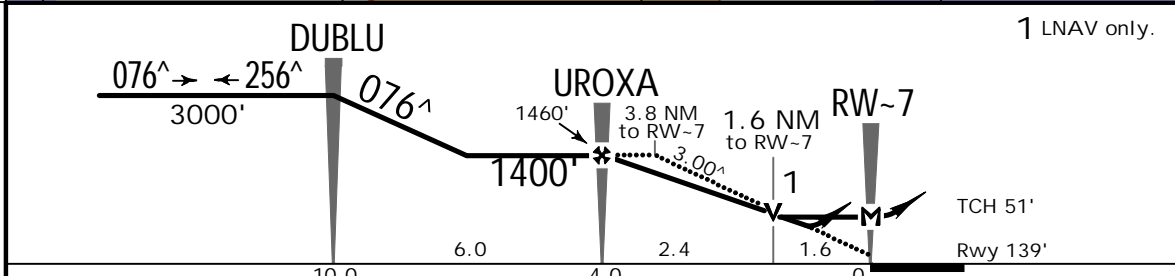
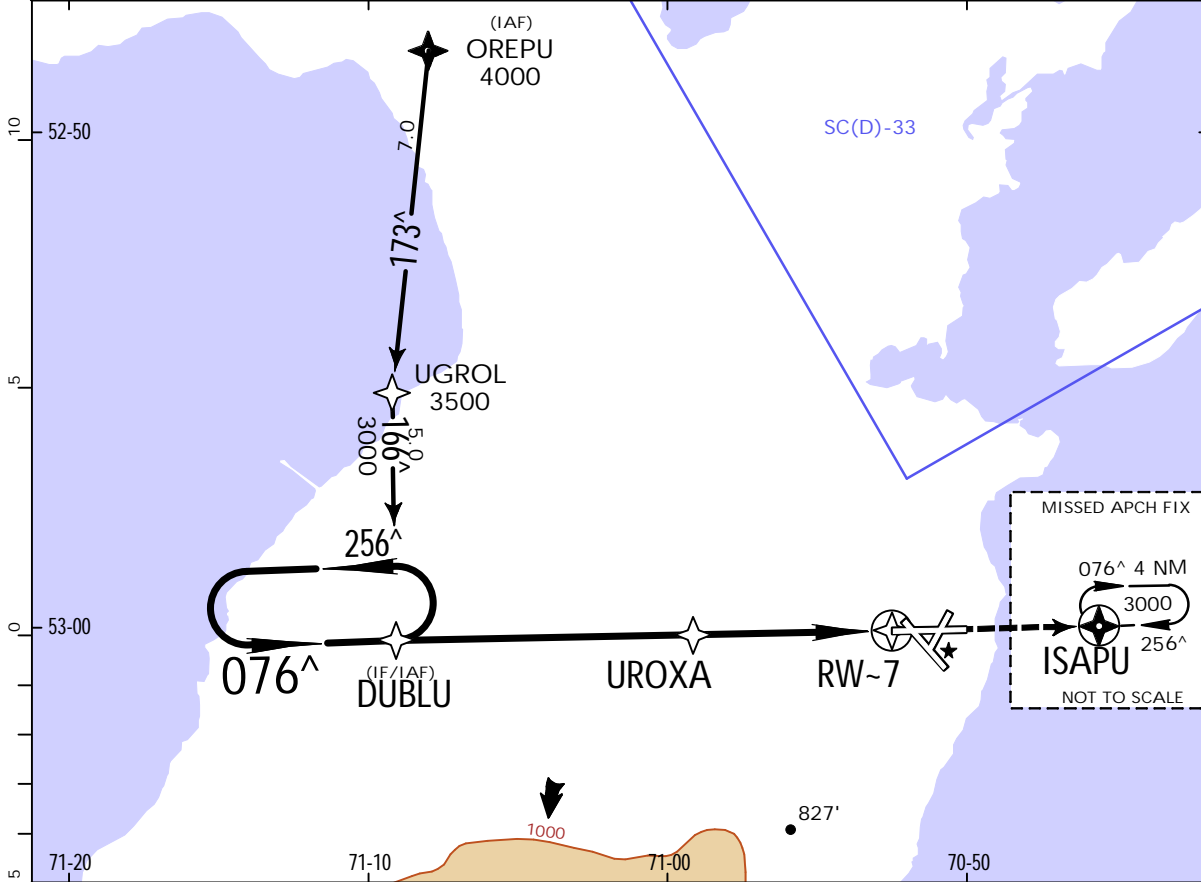
JEPPESEN

PUNTA ARENAS, CHILE
RNP Y Rwy 07

CARLOS IBANEZ DEL CAMPO INTL (12-1) .Eff.11.Aug.

5 AUG 22

PUNTA ARENAS Center (R) 128.1 123.9			PUNTA ARENAS Tower 118.7		Ground 121.9
RNAV	Final Apch Crs 076 [^]	UROXA 1400' (1261')	LNAV/VNAV DA(H) 500' (361')	Apt Elev 139' Rwy 139'	 <p>4500</p> <p>MSA RW-7</p>
MISSED APCH: Climb to 3000' direct to ISAPU, enter holding 256 [^] , or according to ATC clearance.					
Alt Set: hPa		Rwy Elev: 5 hPa	Trans level: By ATC	Trans alt: 10000'	
RNP Apch approval required					
For uncompensated Baro-VNAV systems, procedure not authorized below -10°C or above 44°C.					



Gnd speed-Kts	70	90	100	120	140	160	REIL PAPI-L	3000'	D	ISAPU
Glide Path Angle	3.00 [^]	372	478	531	637	849				
MAP at RW-7										

STRAIGHT-IN LANDING RWY 07		CIRCLE-TO-LAND	
LNAV/VNAV DA(H)	LNAV MDA(H)	Max Kts	MDA(H)
500' (361')	700' (561')	90	700' (561') -1.6 km
1.6 km	1.6 km	120	800' (661') -2.8 km
2.0 km	2.8 km	140	960' (821') -4.4 km
		165	

SCCI/PUO

JEPPESEN

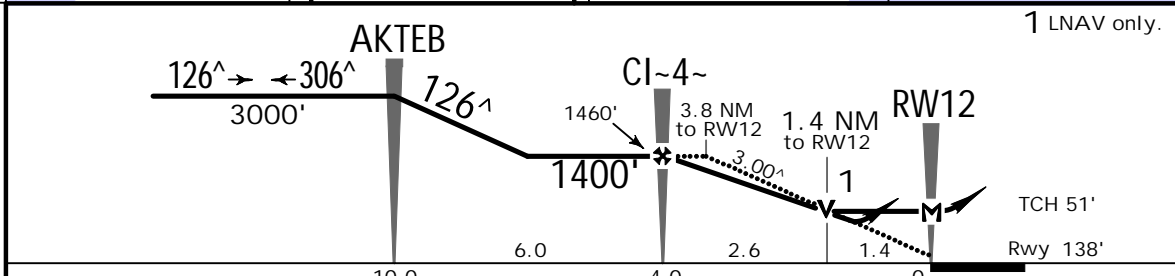
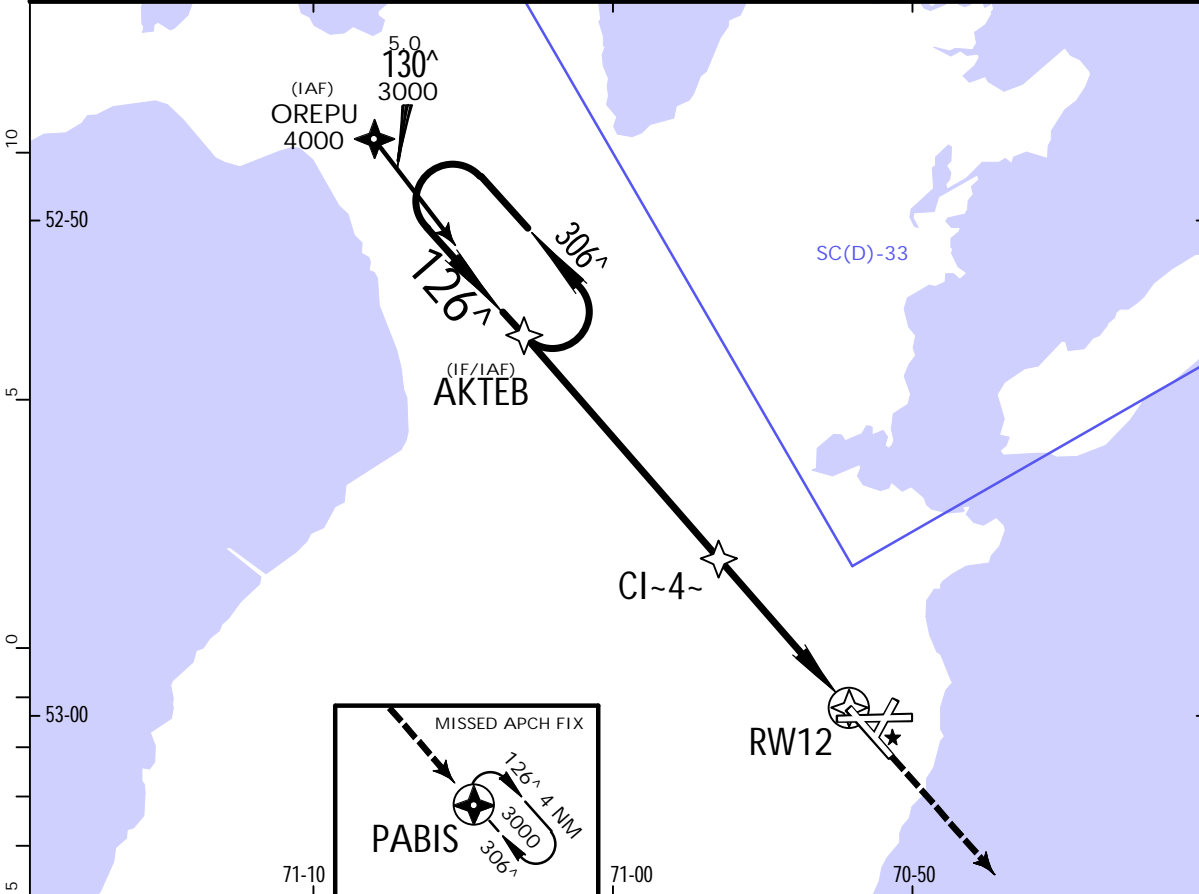
PUNTA ARENAS, CHILE
RNP Rwy 12

CARLOS IBANEZ DEL CAMPO INTL

12-2

5 AUG 22
Eff. 11 Aug.

PUNTA ARENAS Center (R) 128.1 123.9		PUNTA ARENAS Tower 118.7		Ground 121.9	
RNAV	Final Apch Crs 126 [^]	CI-4~ 1400' (1262')	LNAV/VNAV DA(H) 440' (302')	Apt Elev 139' Rwy 138'	
MISSED APCH: Climb to 3000' direct to PABIS, enter holding 306 [^] , or according to ATC clearance.					4500 MSA RW12
Alt Set: hPa Rwy Elev: 5 hPa Trans level: By ATC Trans alt: 10000'					
RNP Apch approval required For uncompensated Baro-VNAV systems, procedure not authorized below -10°C or above 44°C.					



Gnd speed-Kts	70	90	100	120	140	160	REIL	3000'	D	PABIS
Glide Path Angle	3.00 [^]	372	478	531	637	849				
MAP at RW12										

STRAIGHT-IN LANDING RWY 12				CIRCLE-TO-LAND			
LNAV/VNAV DA(H) 440' (302')		LNAV MDA(H) 620' (482')		Max Kts		MDA(H)	
A	1.6 km	2.4 km	1.6 km	90	640' (501') - 1.6 km		
B				120	800' (661') - 2.8 km		
C				140	960' (821') - 4.4 km		
D				165			

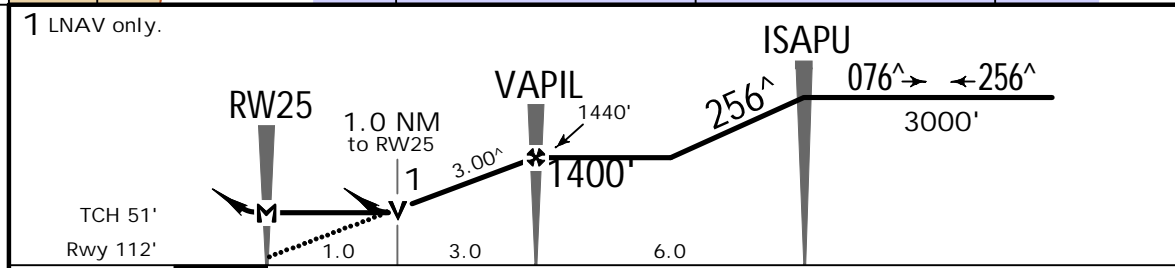
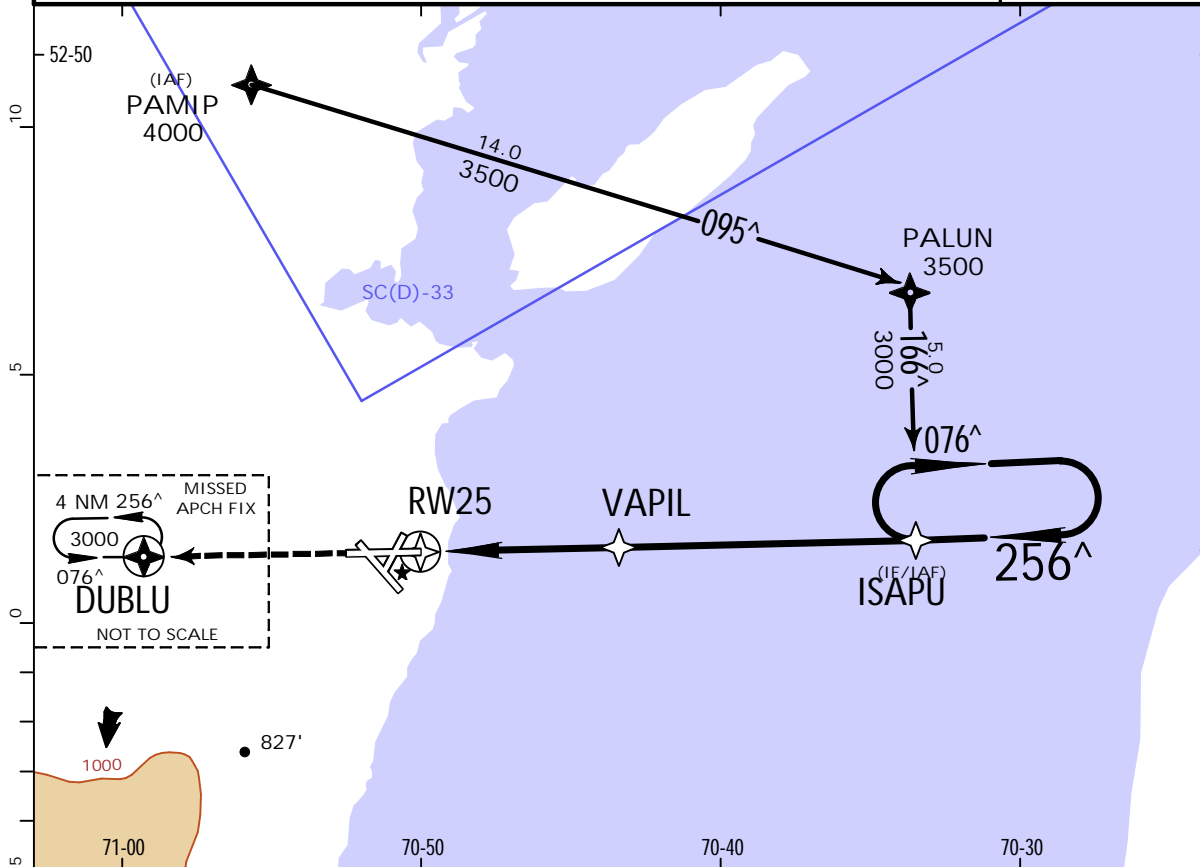
SCCI/PUO

JEPPESEN

PUNTA ARENAS, CHILE
RNP Y Rwy 25

CARLOS IBANEZ DEL CAMPO INTL (12-3) 5 AUG 22 Eff. 11 Aug.

PUNTA ARENAS Center (R) 128.1 123.9			PUNTA ARENAS Tower 118.7		Ground 121.9
RNAV	Final Apch Crs 256 [^]	VAPIL 1400' (1288')	LNAV/VNAV DA(H) 480' (368')	Apt Elev 139' Rwy 112'	4500 MSA RW25
MISSED APCH: Climb to 3000' direct to DUBLU, enter holding 076 [^] or according to ATC clearance.					
Alt Set: hPa Rwy Elev: 4 hPa Trans level: By ATC Trans alt: 10000'					
RNP Apch approval required					
Baro-VNAV systems, procedure not authorized below -10°C or above 44°C.					



Gnd speed-Kts	70	90	100	120	140	160	ALSFI PAPI	3000'	D	DUBLU
Glide Path Angle	3.00 [^]	372	478	531	637	743				
MAP at RW25										

	STRAIGHT-IN LANDING RWY 25				Max Kts	MDA(H)
	LNAV/VNAV		LNAV			
	DA(H)	ALS out	MDA(H)	ALS out		
A	480' (368')		480' (368')		90	640'(501') -1.6 km
B		1.6 km		1.6 km	120	
C	1.2 km		1.2 km		140	800'(661') -2.8 km
D		2.0 km		2.0 km	165	960'(821') -4.4 km

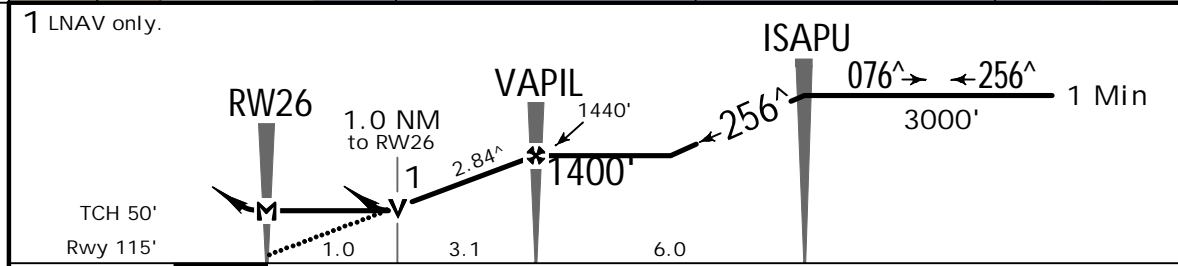
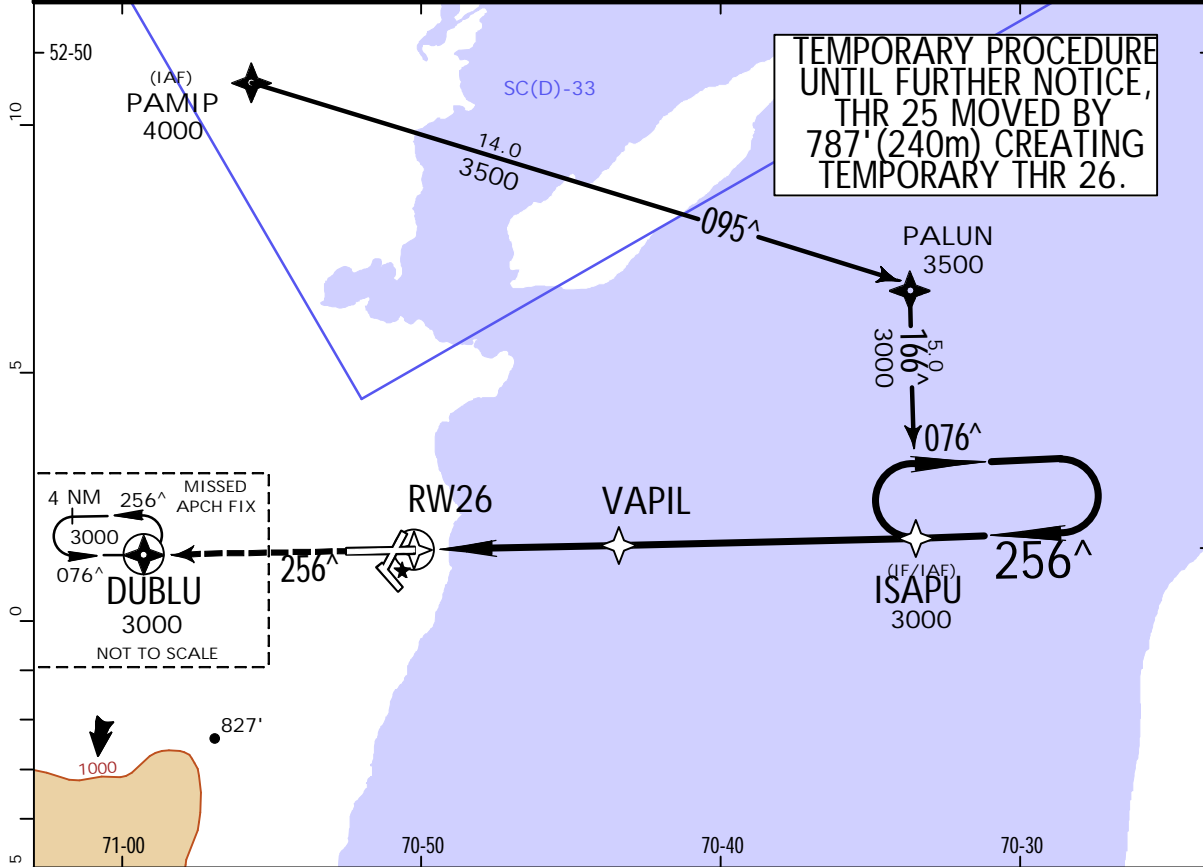
SCCI/PUO

JEPPESEN

PUNTA ARENAS, CHILE
RNP Y Rwy 26

CARLOS IBANEZ DEL CAMPO INTL (12-3-0) .Eff.26.Sep. 16 SEP 22

PUNTA ARENAS Center (R) 128.1 123.9			PUNTA ARENAS Tower 118.7		Ground 121.9
RNAV	Final Apch Crs 256 [^]	VAPIL 1400' (1285')	LNAV/VNAV DA(H) 480' (365')	Apt Elev 139' Rwy 115'	4500 MSA RW26
MISSED APCH: Climb to 3000' direct to DUBLU, enter holding 076 [^] or according to ATC clearance.					
Alt Set: hPa Rwy Elev: 4 hPa Trans level: By ATC Trans alt: 10000'					
RNP Apch approval required For uncompensated Baro-VNAV systems, procedure not authorized below -10°C or above 44°C.					



Gnd speed-Kts	70	90	100	120	140	160	PAPI-L	3000'	D	DUBLU
Glide Path Angle	2.84 [^]	352	452	502	603	703				
MAP at RW26										

STRAIGHT-IN LANDING RWY 26				CIRCLE-TO-LAND			
LNAV/VNAV DA(H) 480' (365')		LNAV MDA(H) 480' (365')		LNAV/VNAV DA(H) 480' (365')		LNAV MDA(H) 480' (365')	
A	1.6 km	1.6 km	1.6 km	1.6 km	640'(501')	-1.6 km	
B					120		
C	2.0 km	2.0 km	2.0 km	2.0 km	140	800'(661')	-2.8 km
D					165	960'(821')	-4.4 km

CHANGES: New temporary procedure.

SCCI/PUO

JEPPESEN

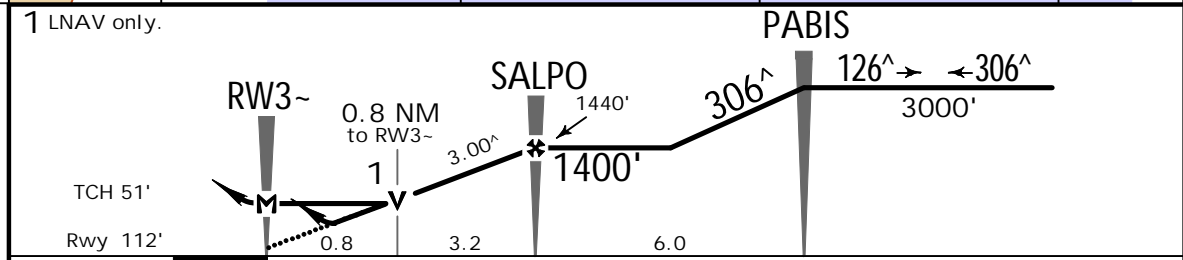
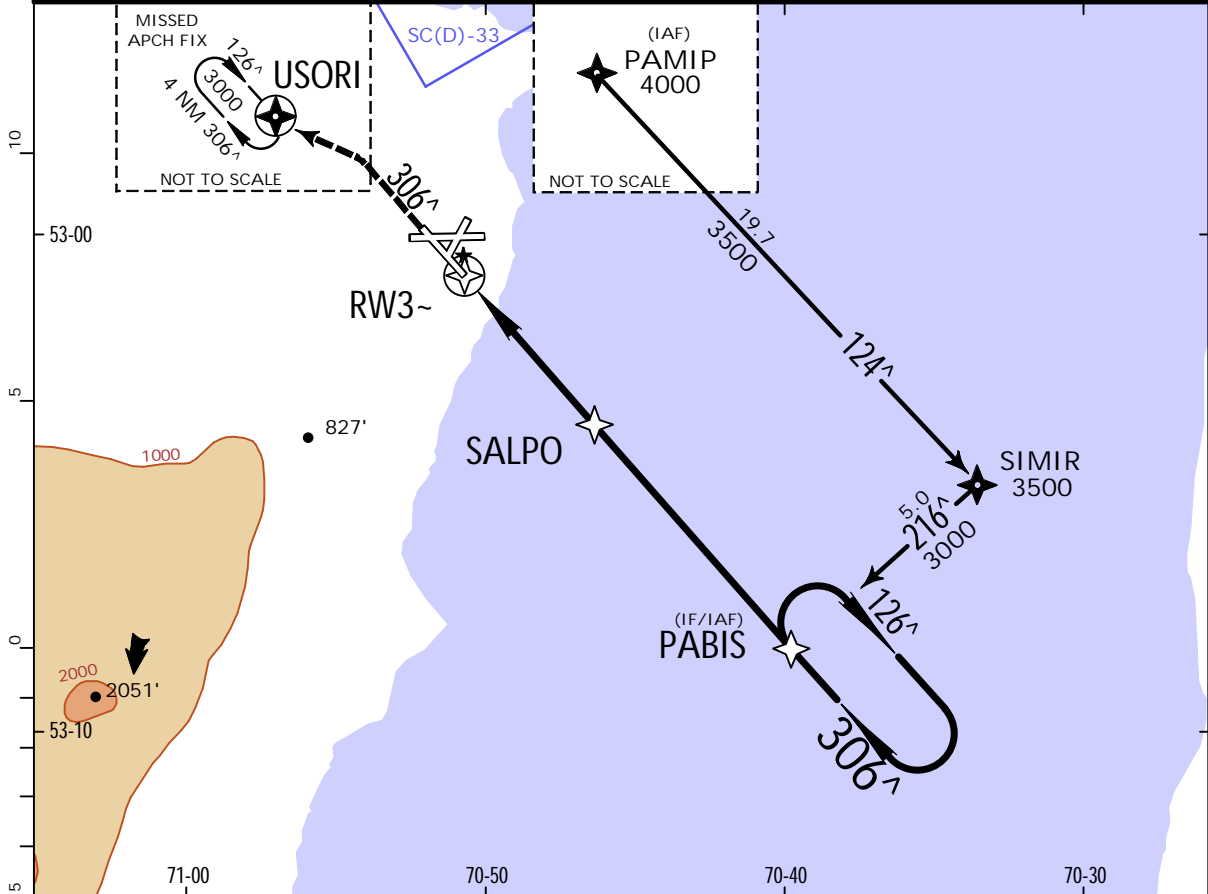
PUNTA ARENAS, CHILE
RNP Y Rwy 30

CARLOS IBANEZ DEL CAMPO INTL (12-4)

12-4

5 AUG 22
.Eff.11.Aug.

PUNTA ARENAS Center (R) 128.1 123.9		PUNTA ARENAS Tower 118.7		Ground 121.9	
RNAV	Final Apch Crs 306 [^]	SALPO 1400' (1288')	LNAV/VNAV DA(H) 370' (258')	Apt Elev 139' Rwy 112'	
MISSED APCH: Climb on track 306 [^] to 600' then direct to USORI, enter holding 126 [^] or according to ATC clearance.					
Alt Set: hPa		Rwy Elev: 4 hPa	Trans level: By ATC	Trans alt: 10000'	
RNP Apch approval required For uncompensated Baro-VNAV systems, procedure not authorized below -10°C or above 44°C.					



Gnd speed-Kts	70	90	100	120	140	160	SSALF	600'	306 [^] on track	USORI
Glide Path Angle	3.00 [^]	372	478	531	637	743				
MAP at RW3-										

	STRAIGHT-IN LANDING RWY 30		CIRCLE-TO-LAND	
	LNAV/VNAV DA(H) 370' (258')	LNAV MDA(H) 420' (308')	LNAV MDA(H)	Max Kts
A	ALS out	ALS out	640' (501')	90
B				120
C	1.2 km	1.6 km	800' (661')	140
D			960' (821')	165

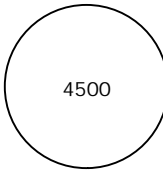
SCCI/PUO

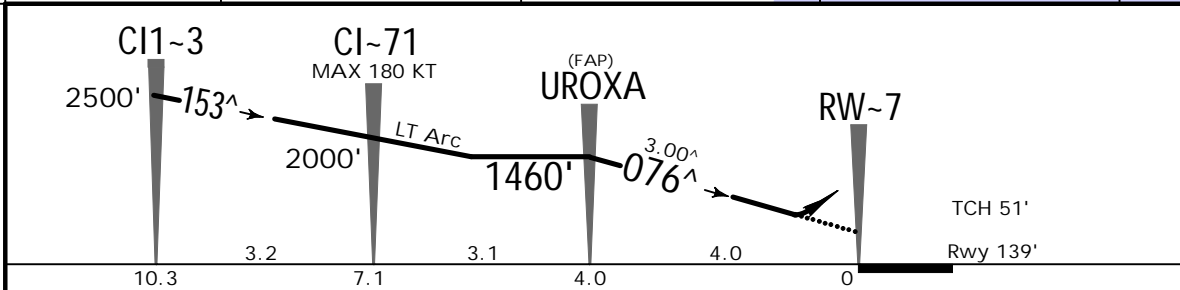
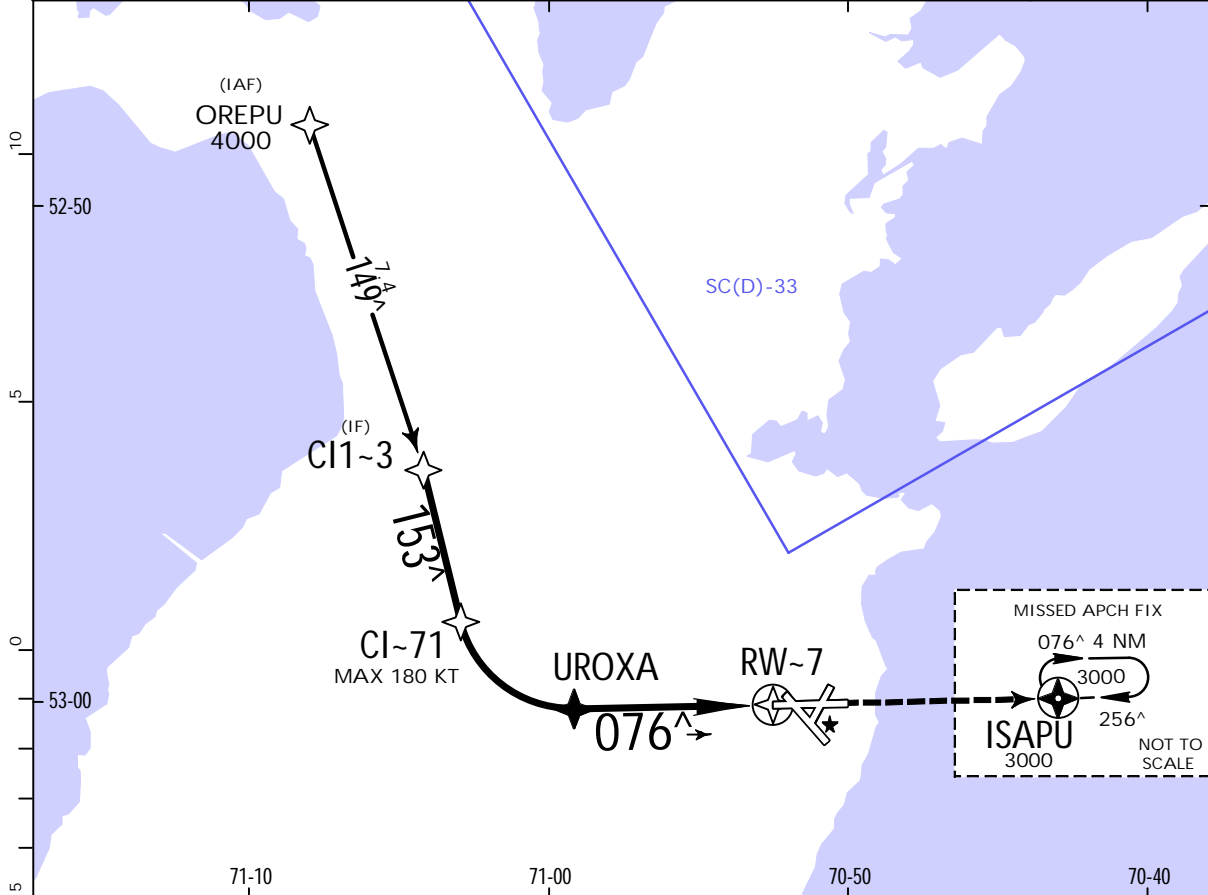
CARLOS IBANEZ DEL CAMPO INTL (12-20)

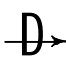
JEPPESEN

5 AUG 22
Eff. 11 Aug.

PUNTA ARENAS, CHILE
RNP Z Rwy 07 (AR)

PUNTA ARENAS Center (R)		PUNTA ARENAS Tower		Ground	
128.1		123.9		118.7	
RNAV	Final Apch Crs 076[^]	UROXA 1460' (1321')	RNP 0.15 DA(H) 470' (331')	Apt Elev 139'	Rwy 139'
MISSED APCH: Climb to 3000' direct to ISAPU and hold, or according to ATC clearance.					 4500 MSA RW-7
Alt Set: hPa		Rwy Elev: 5 hPa	Trans level: By ATC	Trans alt: 10000'	
RNP AR Apch approval required RNP 0.3 Required for initial and intermediate segment					
1. Authorization Required. 2. RF required. 3. For uncompensated Baro-VNAV systems, procedure not authorized below -10°C or above 43°C.					



Gnd speed-Kts	70	90	100	120	140	160	REIL PAPI-L	3000'		ISAPU
Glide Path Angle 3.00 [^]	372	478	531	637	743	849				

STRAIGHT-IN LANDING RWY 07	
RNP 0.15 DA(H) 470' (331')	RNP 0.30 DA(H) 570' (431')

A		
B	1.6 km	2.0 km
C		
D		

SCCI/PUQ

CARLOS IBANEZ DEL CAMPO INTL

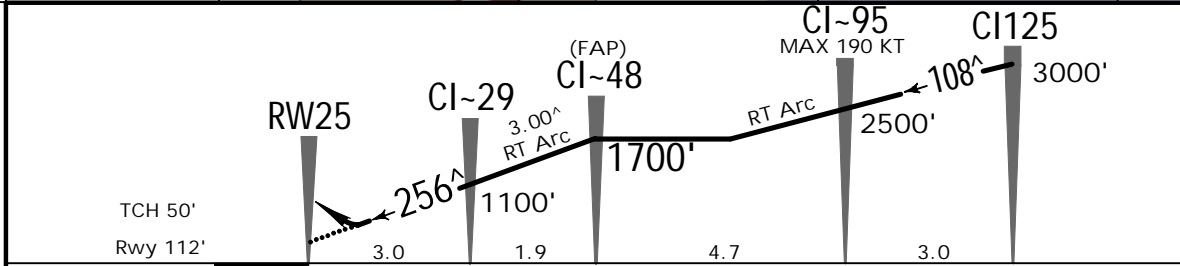
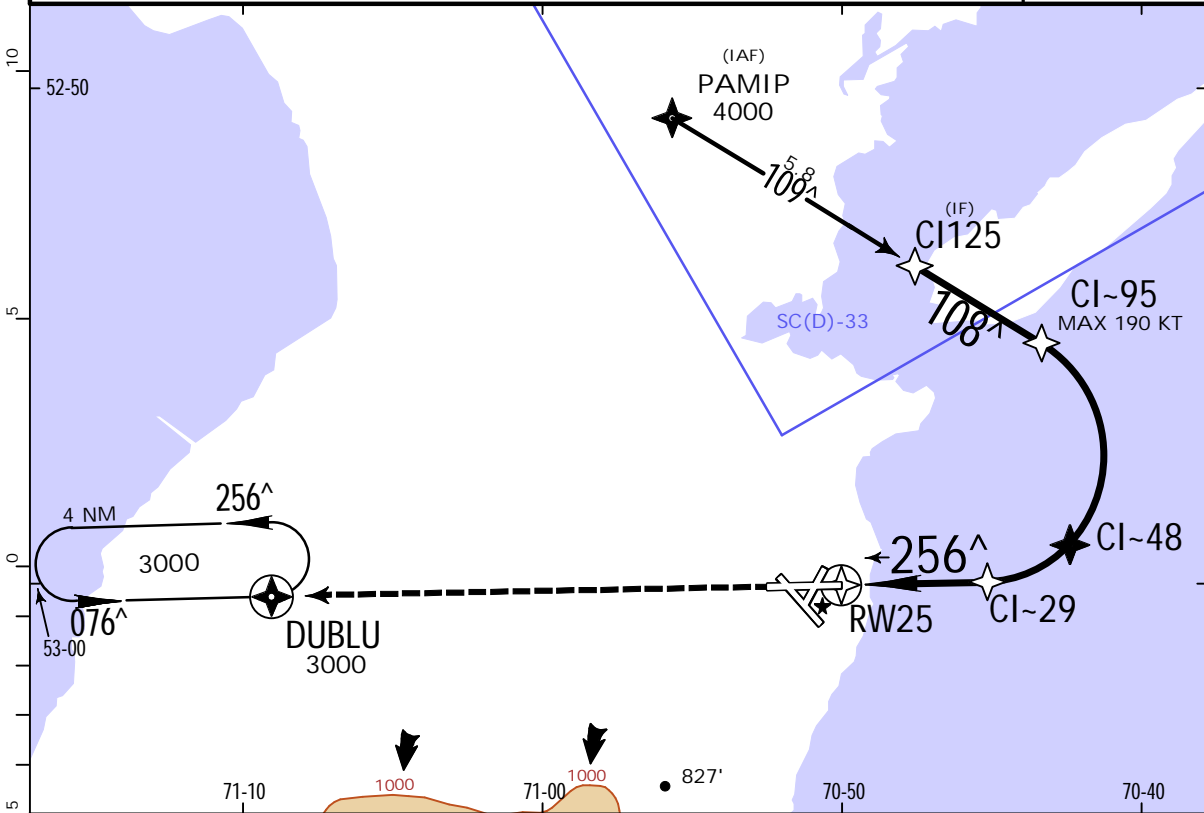


12-21

5 AUG 22
Eff. 11 Aug.

PUNTA ARENAS, CHILE
RNP Z Rwy 25 (AR)

PUNTA ARENAS Center (R) 128.1 123.9		PUNTA ARENAS Tower 118.7		Ground 121.9
RNAV	Final Apch Crs 256[^]	CI-48 1700' (1588')	RNP 0.15 DA(H) 370' (258')	Apt Elev 139' Rwy 112'
MISSED APCH: Climb to 3000' direct to DUBLU and hold, or according to ATC clearance.				4500
Alt Set: hPa	Rwy Elev: 4 hPa	Trans level: By ATC	Trans alt: 10000'	
RNP Apch approval required RNP 0.3 Required for initial and intermediate segment				
1. Authorization Required. 2. RF required. 3. For uncompensated Baro-VNAV systems, procedure not authorized below -10°C or above 43°C.				MSA RW25



Gnd speed-Kts	70	90	100	120	140	160	ALSFI 3000'	PAPI	DUBLU
Glide Path Angle	3.00 [^]	372	478	531	637	743			

STRAIGHT-IN LANDING RWY 25		STRAIGHT-IN LANDING RWY 25	
RNP 0.15 DA(H) 370' (258')	RNP 0.30 DA(H) 420' (308')	RNP 0.15 DA(H) 370' (258')	RNP 0.30 DA(H) 420' (308')
ALS out		ALS out	

A	0.8 km	1.6 km	0.8 km	1.6 km
B				
C				
D				

SCCI/PUQ

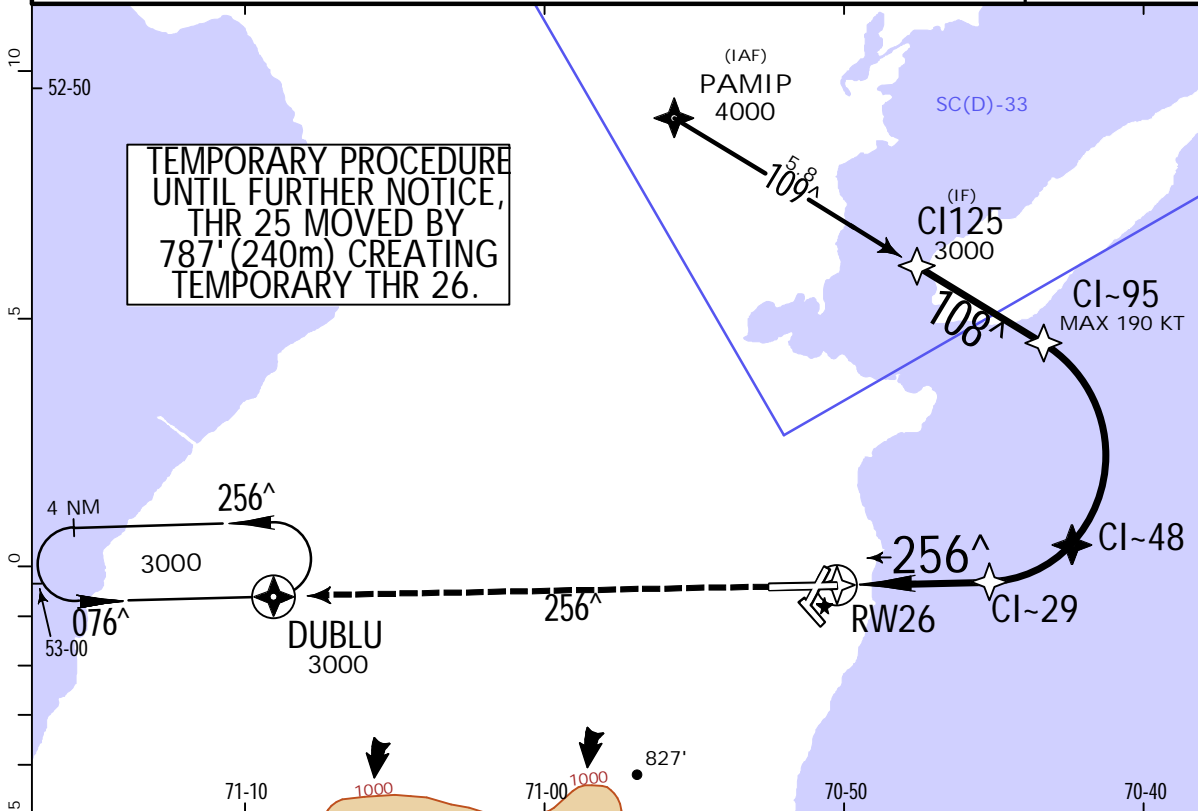
JEPPESSEN

PUNTA ARENAS, CHILE
RNP Z Rwy 26 (AR)

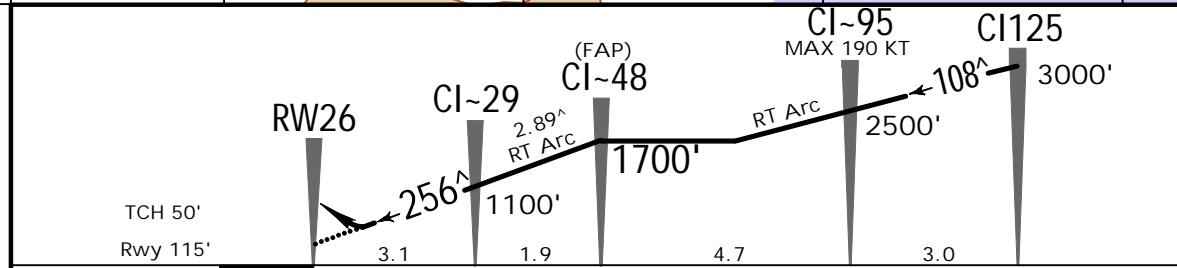
CARLOS IBANEZ DEL CAMPO INTL (12-21-0)

16 SEP 22
.Eff.26.Sep.

PUNTA ARENAS Center (R)		PUNTA ARENAS Tower		Ground
128.1		123.9		118.7
RNAV	Final Apch Crs 256 [^]	CI-48 1700' (1585')	RNP 0.15 DA(H) 370' (255')	Apt Elev 139' Rwy 115'
MISSED APCH: Climb to 3000' direct to DUBLU, enter holding 076 [^] or according to ATC clearance.				4500
Alt Set: hPa	Rwy Elev: 4 hPa	Trans level: By ATC	Trans alt: 10000'	
RNP Apch approval required RNP 0.3 Required for initial and intermediate segment				
1. Authorization Required. 2. RF required. 3. Procedure not authorized below -10 [^] C or above 43 [^] C.				



TEMPORARY PROCEDURE
UNTIL FURTHER NOTICE,
THR 25 MOVED BY
787' (240m) CREATING
TEMPORARY THR 26.



Gnd speed-Kts	70	90	100	120	140	160	PAPI-L	3000'	D	DUBLU
Glide Path Angle	2.89 [^]	358	460	511	613	716				

STRAIGHT-IN LANDING RWY 26					
RNP 0.15 DA(H) 370' (255')			RNP 0.30 DA(H) 420' (305')		

A	1.6 km	1.6 km
B		
C		
D		

SCCI/PUQ

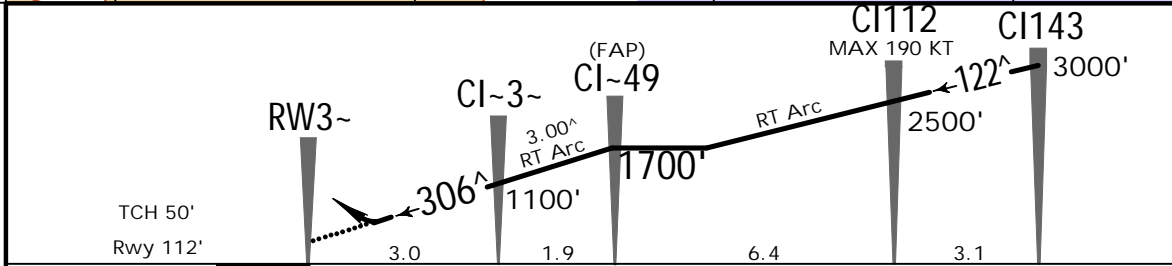
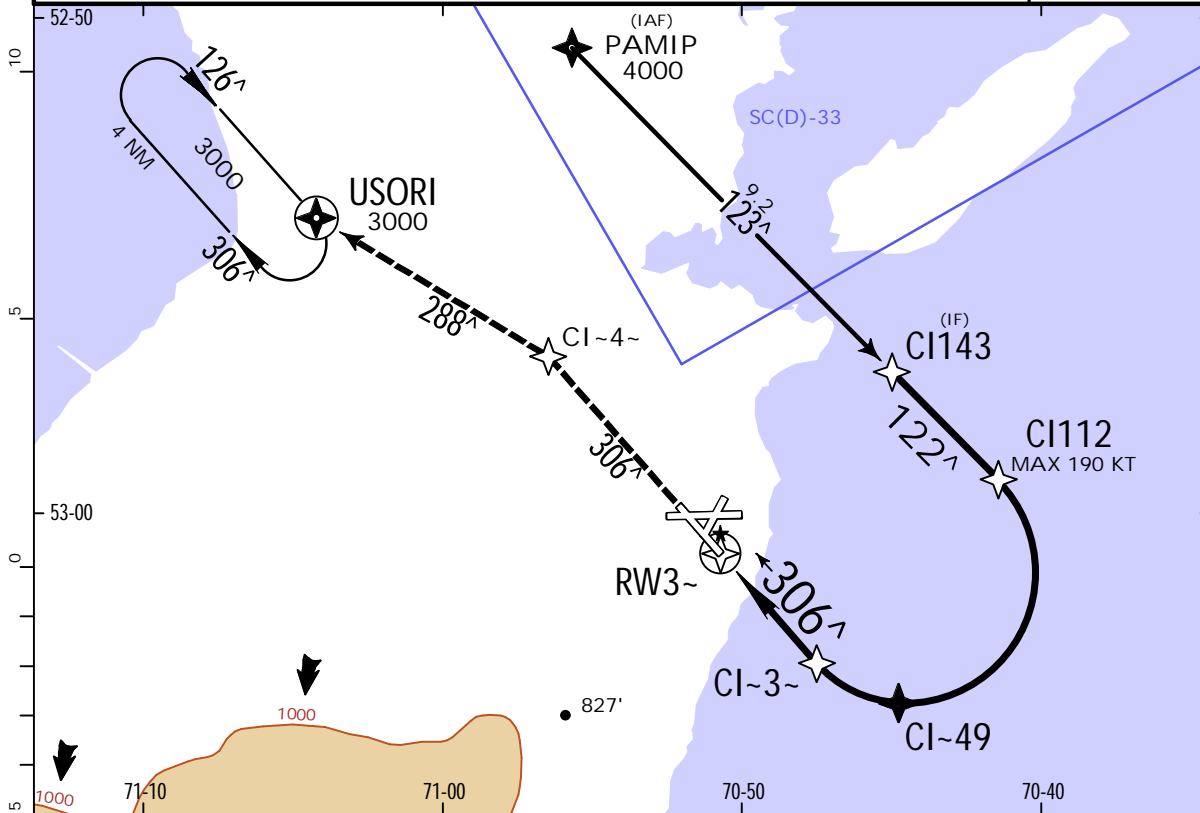
CARLOS IBANEZ DEL CAMPO INTL



5 AUG 22
Eff. 11 Aug.

PUNTA ARENAS, CHILE
RNP Z Rwy 30 (AR)

PUNTA ARENAS Center (R)		PUNTA ARENAS Tower		Ground		
128.1		123.9		118.7		
RNAV	Final Apch Crs 306 [^]	CI-49 1700' (1588')	RNP 0.15 DA(H) 370' (258')	Apt Elev 139' Rwy 112'		
MISSED APCH: Climb on track 306 [^] to CI-4~, then on track 288 [^] to USORI at 3000' and hold, or according to ATC clearance.					4500	
Alt Set: hPa		Rwy Elev: 4 hPa	Trans level: By ATC			Trans alt: 10000'
RNP Apch approval required		RNP 0.3 Required for initial and intermediate segment				
1. Authorization Required. 2. RF required. 3. For uncompensated Baro-VNAV systems, procedure not authorized below -10°C or above 43°C.						MSA RW3~



Gnd speed-Kts	70	90	100	120	140	160	SSALF PAPI	↑ on 306 [^]	CI-4~
Glide Path Angle	3.00 [^]	372	478	531	637	743			

STRAIGHT-IN LANDING RWY 30			
RNP 0.15 DA(H) 370' (258')		RNP 0.30 DA(H) 420' (308')	
ALS out		ALS out	
A	1.2 km	1.6 km	1.2 km
B			
C			
D			

CHANGES: Procedure title, PBN notes.

SCCI/PUQ

CARLOS IBANEZ DEL CAMPO INTL

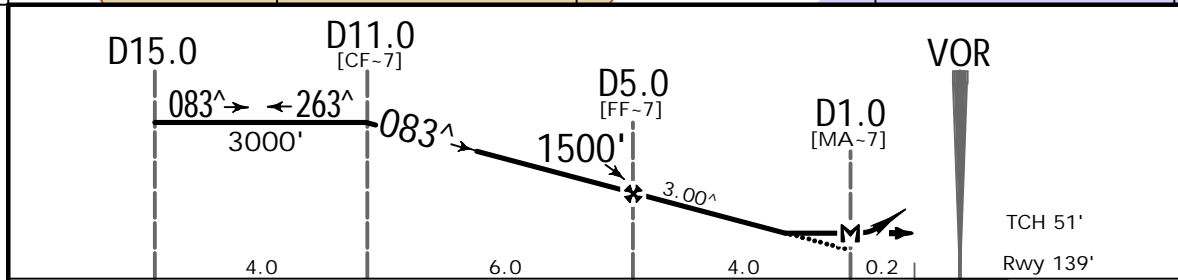
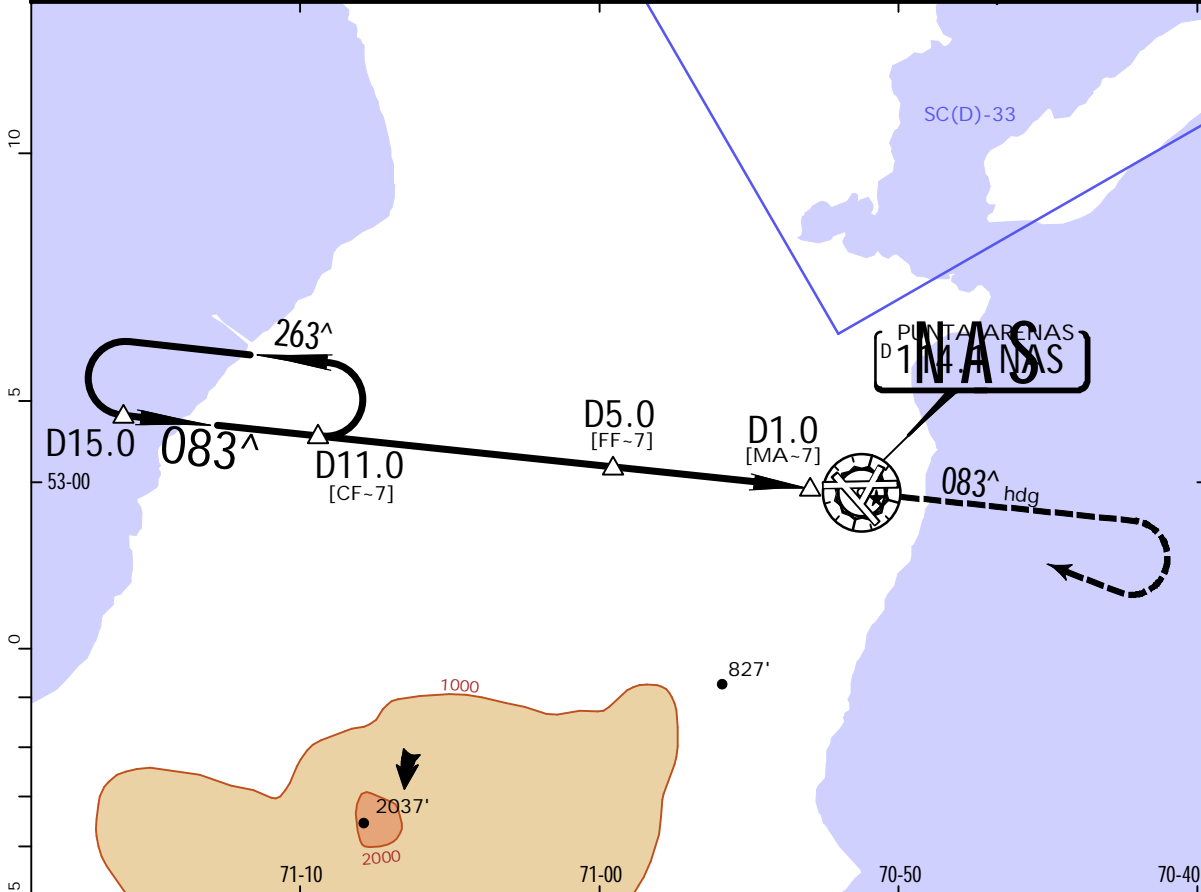


13-1

26 NOV 21
Eff. 2. Dec.

PUNTA ARENAS, CHILE
VOR Z Rwy 07

PUNTA ARENAS Approach (R) 128.1 123.9			PUNTA ARENAS Tower 118.7		Ground 121.9
VOR NAS 114.1	Final Apch Crs 083 [^]	D5.0 1500' (1361')	MDA(H) 700' (561')	Apt Elev 139' Rwy 139'	4500
MISSED APCH: Climb to 3000' on heading 083 [^] , turn RIGHT direct to NAS VOR, then according to ATC clearance.					
Alt Set: hPa		Rwy Elev: 4 hPa	Trans level: By ATC		Trans alt: 10000'
DME required.					MSA NAS VOR



Gnd speed-Kts	70	90	100	120	140	160	REIL PAPI-L	3000' on 083 [^] hdg
Descent Angle 3.00 [^]	372	478	531	637	743	849		
MAP at VOR								

	STRAIGHT-IN LANDING RWY 07		CIRCLE-TO-LAND
	MDA(H) 700' (561')		
		Max Kts	
A		90	MDA(H)
B	1.6 km	120	700' (561') - 1.6 km
C	2.4 km	140	800' (661') - 2.8 km
D	2.8 km	165	960' (821') - 4.4 km

SCCI/PUQ

CARLOS IBANEZ DEL CAMPO INTL

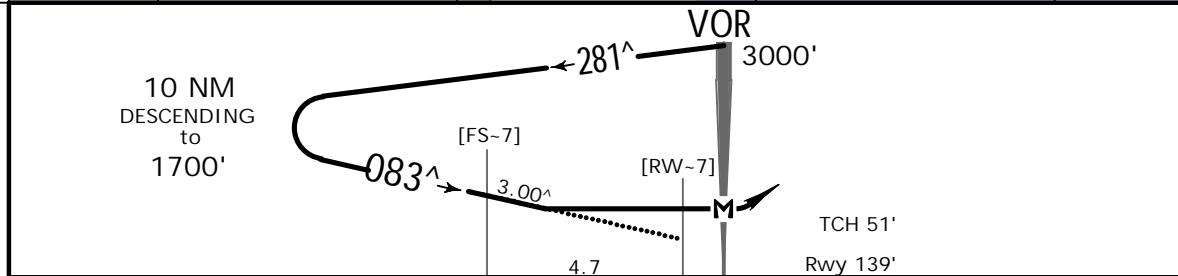
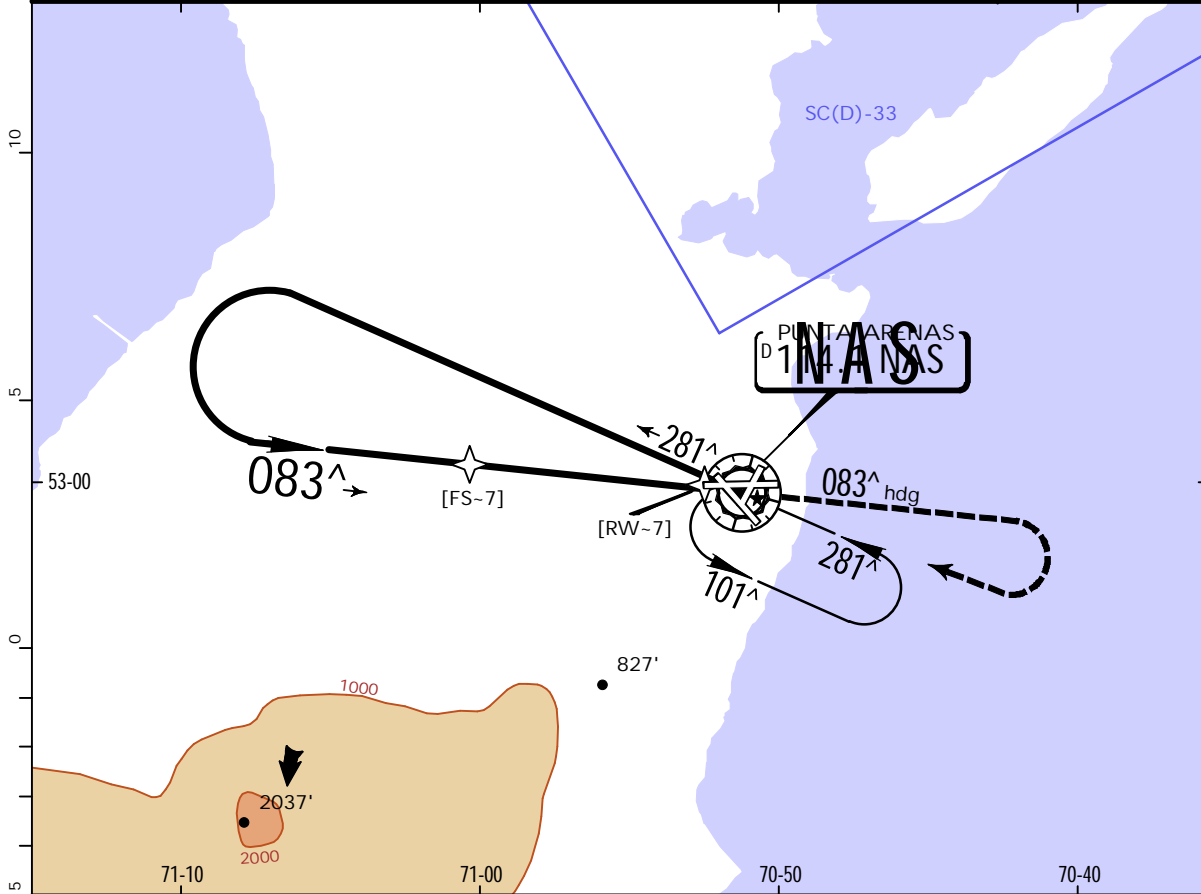


13-2

26 NOV 21
Eff. 2. Dec.

PUNTA ARENAS, CHILE
VOR Y Rwy 07

PUNTA ARENAS Approach (R) 128.1 123.9			PUNTA ARENAS Tower 118.7		Ground 121.9
VOR NAS 114.1	Final Apch Crs 083 [^]	No FAF	MDA(H) 760' (621')	Apt Elev 139' Rwy 139'	4500
MISSED APCH: Climb to 3000' on heading 083 [^] , turn RIGHT direct to NAS VOR, enter holding 281 [^] .					
Alt Set: hPa	Rwy Elev: 4 hPa	Trans level: By ATC	Trans alt: 10000'	MSA NAS VOR	



Gnd speed-Kts	70	90	100	120	140	160	REIL PAPI-L	3000'	083 [^]
Descent Angle 3.00 [^]	372	478	531	637	743	849		↑	on hdg
MAP at VOR									

STRAIGHT-IN LANDING RWY 07		Max Kts	CIRCLE-TO-LAND	
MDA(H) 760' (621')			MDA(H)	
A		90	760' (621') - 1.6 km	
B	1.6 km	120		
C	2.8 km	140	800' (661') - 2.8 km	
D	3.2 km	165	960' (821') - 4.4 km	

SCCI/PUO
CARLOS IBANEZ DEL CAMPO INTL

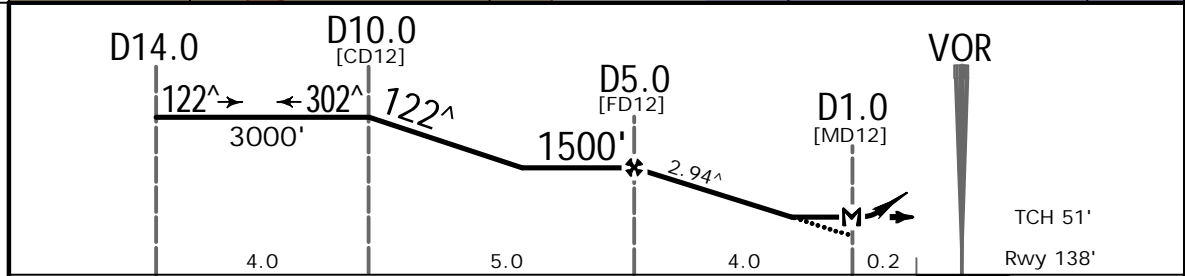
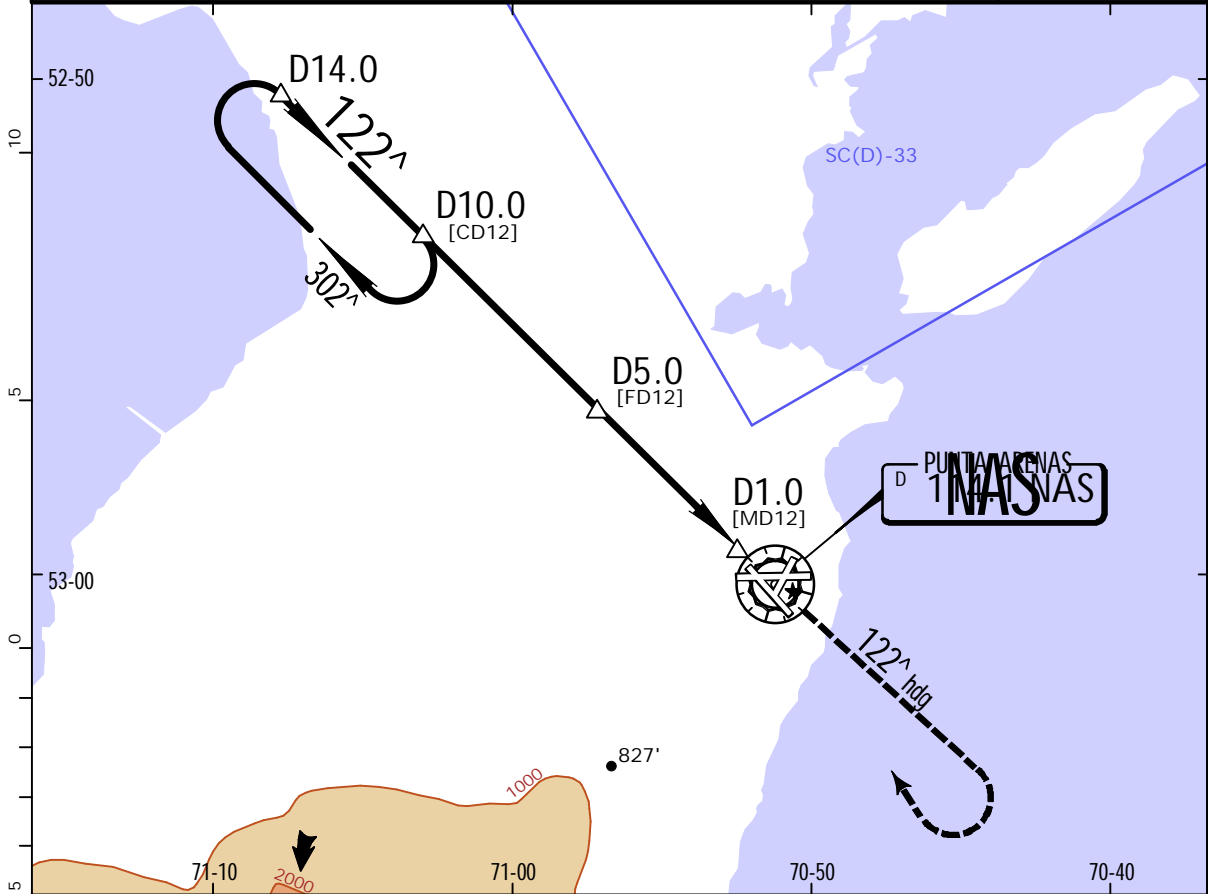


13-3

26 NOV 21
Eff. 2. Dec.

PUNTA ARENAS, CHILE
VOR Z Rwy 12

PUNTA ARENAS Approach (R)			PUNTA ARENAS Tower		Ground
128.1 123.9			118.7		121.9
VOR NAS 114.1	Final Apch Crs 122 [^]	D5.0 1500' (1362')	MDA(H) 620' (482')	Apt Elev 139' Rwy 138'	
MISSED APCH: Climb to 3000' on heading 122 [^] , turn RIGHT direct to NAS VOR, then according to ATC clearance.					4500
Alt Set: hPa Rwy Elev: 5 hPa Trans level: By ATC Trans alt: 10000'					
DME required.					MSA NAS VOR



Gnd speed-Kts	70	90	100	120	140	160	REIL	3000' on 122 [^] hdg
Descent Angle 2.94 [^]	364	468	520	624	728	832		
MAP at D1.0								
FAF to MAP	4.0	3:26	2:40	2:24	2:00	1:43	1:30	

STRAIGHT-IN LANDING RWY 12			CIRCLE-TO-LAND		
MDA(H) 620' (482')			MDA(H)		
A	1.6 km		Max Kts		
B			90	640'(501') -1.6 km	
C			120	800'(661') -2.8 km	
D	2.4 km		140	960'(821') -4.4 km	
			165		

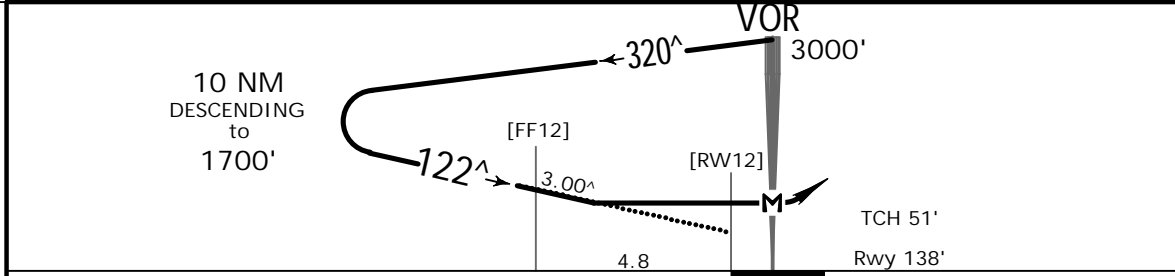
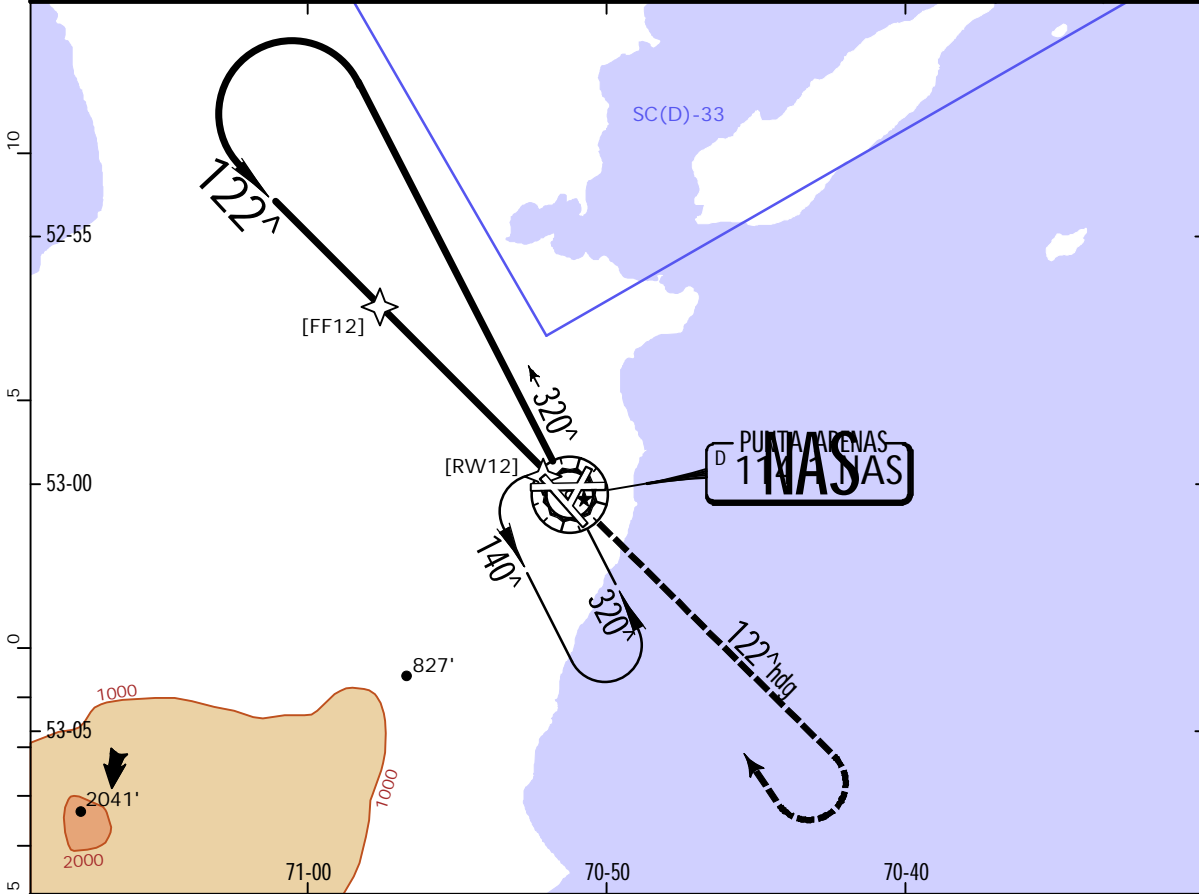
CHANGES: Transition altitude.

SCCI/PUQ
CARLOS IBANEZ DEL CAMPO INTL

JEPPESEN
26 NOV 21
13-4 .Eff.2.Dec.

PUNTA ARENAS, CHILE
VOR Y Rwy 12

PUNTA ARENAS Approach (R)			PUNTA ARENAS Tower		Ground
128.1 123.9			118.7		121.9
VOR NAS 114.1	Final Apch Crs 122 [^]	No FAF	MDA(H) 660' (522')	Apt Elev 139' Rwy 138'	4500
MISSED APCH: Climb to 3000' on heading 122 [^] , turn RIGHT direct to NAS VOR, enter holding 320 [^] .					
Alt Set: hPa	Rwy Elev: 5 hPa	Trans level: By ATC	Trans alt: 10000'	MSA NAS VOR	



Gnd speed-Kts	70	90	100	120	140	160	REIL	3000' on 122 [^] hdg
Descent Angle 3.00 [^]	372	478	531	637	743	849		
MAP at VOR								

STRAIGHT-IN LANDING RWY 12			CIRCLE-TO-LAND		
MDA(H) 660' (522')			MDA(H)		
A	1.6 km		Max Kts	90	
B	2.4 km		90	660'(521') -1.6 km	
C			120	800'(661') -2.8 km	
D			140	960'(821') -4.4 km	
			165		

CHANGES: Transition altitude.

SCCI/PUQ

JEPPESEN

PUNTA ARENAS, CHILE
VOR Y Rwy 13

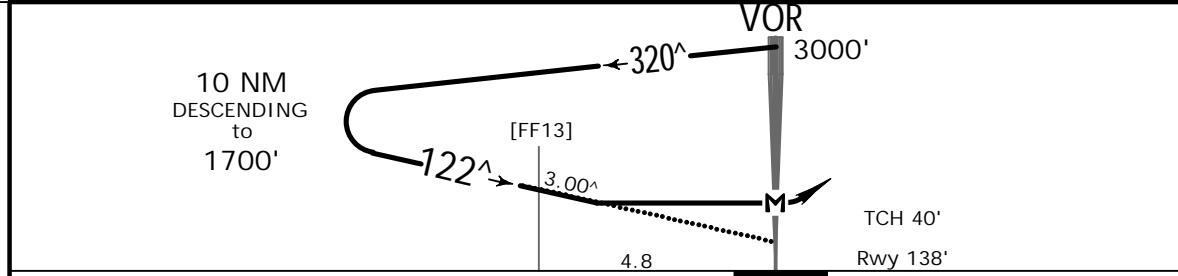
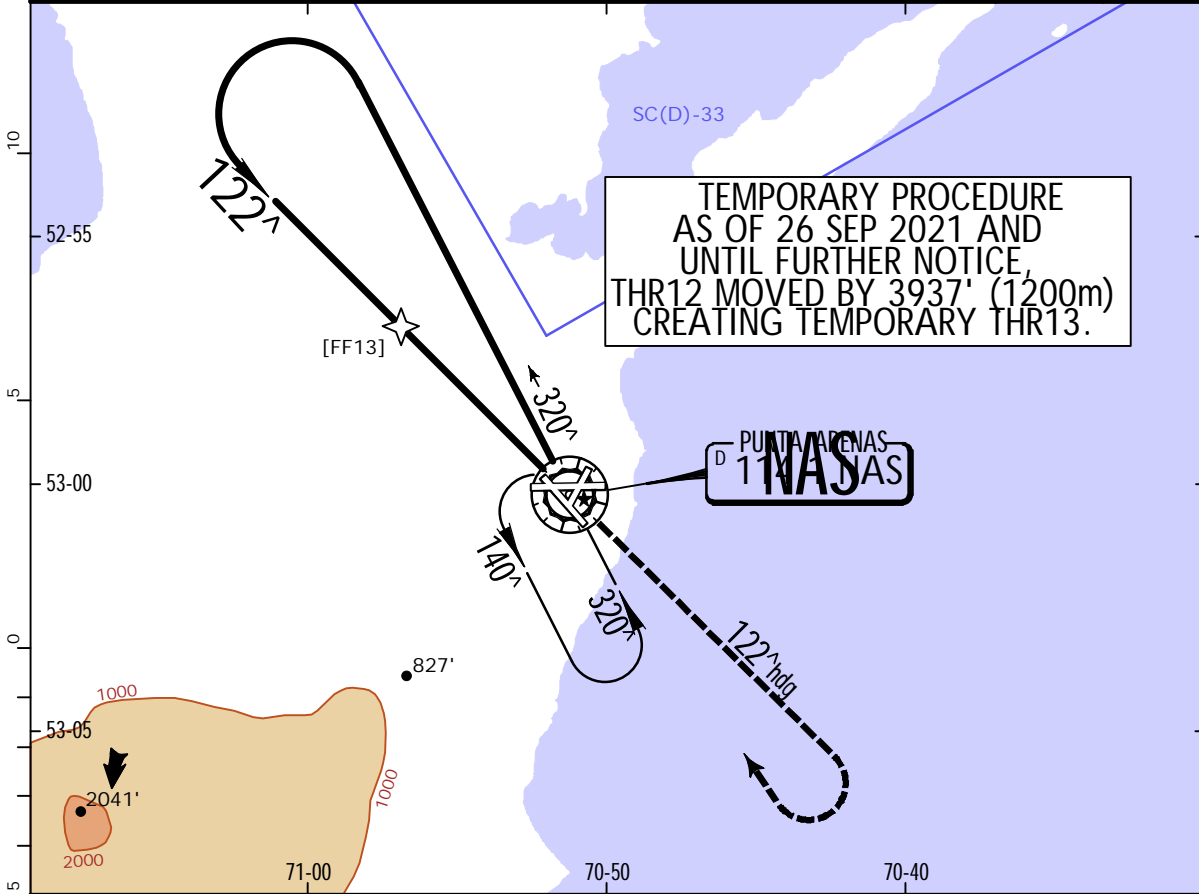
CARLOS IBANEZ DEL CAMPO INTL

(13-4-0)

26 NOV 21
Eff. 2 Dec.

CAT A & B

PUNTA ARENAS Approach (R)			PUNTA ARENAS Tower		Ground
128.1 123.9			118.4	118.7	121.9
VOR NAS 114.1	Final Apch Crs 122 [^]	No FAF	MDA(H) 660' (522')	Apt Elev 139' Rwy 138'	4500
MISSED APCH: Climb to 3000' on heading 122 [^] , turn RIGHT direct to NAS VOR, enter holding 320 [^] .					
Alt Set: hPa	Rwy Elev: 5 hPa	Trans level: By ATC	Trans alt: 10000'	MSA NAS VOR	



Gnd speed-Kts	70	90	100	120	140	160	REIL	3000' on 122 [^] hdg
Descent Angle 3.00 [^]	372	478	531	637	743	849		
MAP at VOR								

STRAIGHT-IN LANDING RWY 13			CIRCLE-TO-LAND		
MDA(H) 660' (522')			MDA(H)		
A	1.6 km			Max Kts	660' (521') -1.6 km
B				90	
C	NOT APPLICABLE			120	
D				C	NOT APPLICABLE
				D	

SCCI/PUQ

CARLOS IBANEZ DEL CAMPO INTL

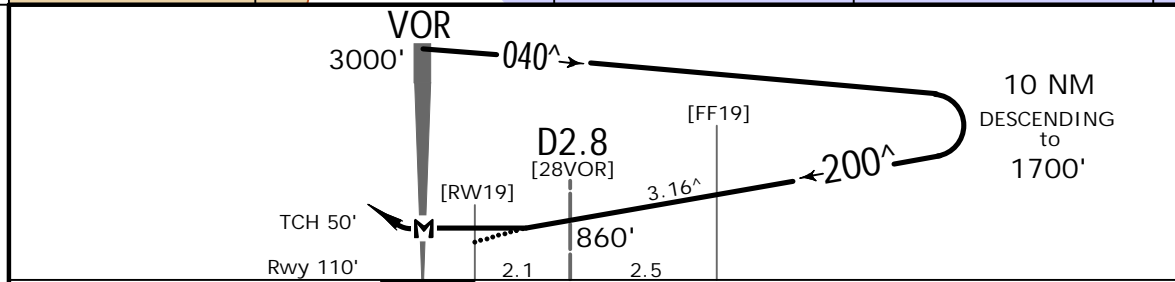
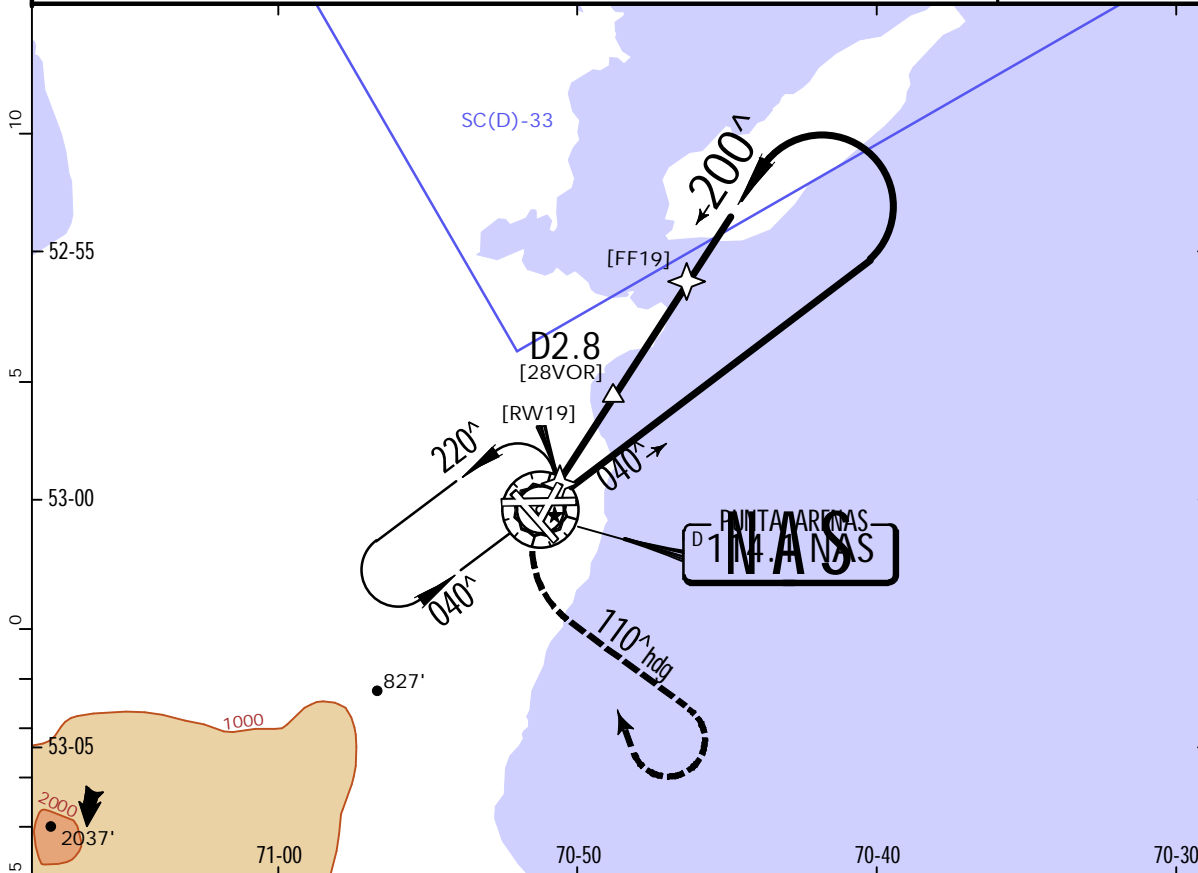
JEPPESEN

13-5

26 NOV 21
Eff.2.Dec.

PUNTA ARENAS, CHILE
VOR Rwy 19

PUNTA ARENAS Center (R)			PUNTA ARENAS Tower		Ground
128.1 123.9		118.7		121.9	
VOR NAS 114.1	Final Apch Crs 200 [^]	No FAF	MDA(H) 520' (410')	Apt Elev 139' Rwy 110'	4500
MISSED APCH: LEFT turn heading 110 [^] climbing to 3000', then RIGHT turn direct NAS VOR, enter holding 040 [^] .					
Alt Set: hPa	Rwy Elev: 4 hPa	Trans level: By ATC	Trans alt: 10000'		MSA NAS VOR
DME required.					



Gnd speed-Kts	70	90	100	120	140	160	3000'	110 [^] hdg	RT	D	NAS 114.1
Descent Angle	3.16 [^]	391	503	559	671	783					
MAP at VOR											

STRAIGHT-IN LANDING RWY 19			CIRCLE-TO-LAND		
MDA(H) 520' (410')			MDA(H)		
A	1.6 km		Max Kts		
B			90	640'(501') -1.6 km	
C			120	800'(661') -2.8 km	
D	2.0 km		140	960'(821') -4.4 km	
			165		

SCCI/PUQ

CARLOS IBANEZ DEL CAMPO INTL

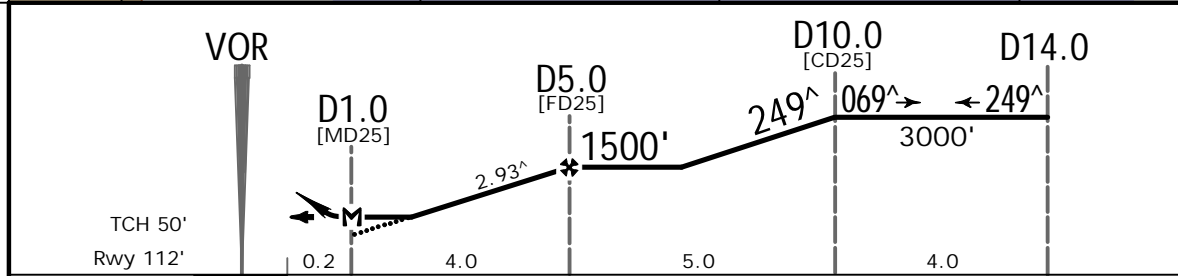
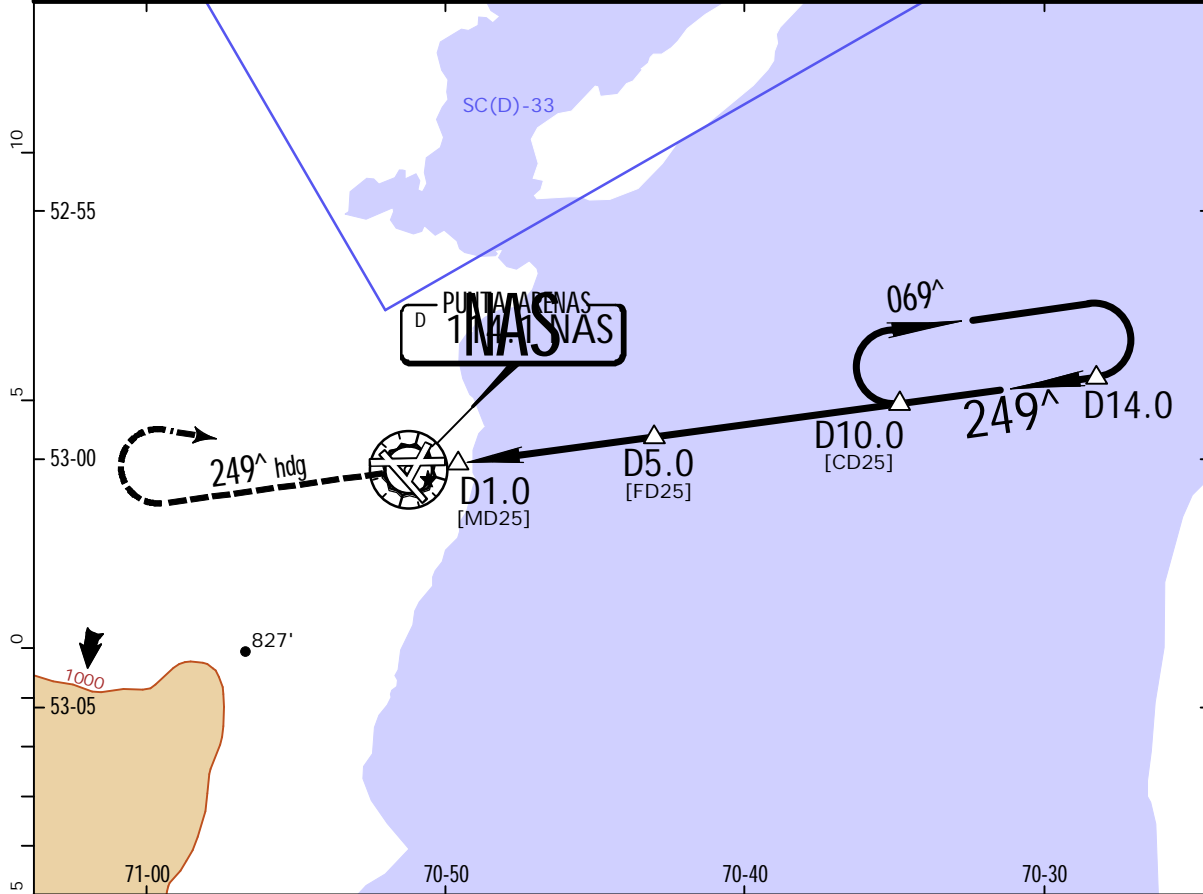
JEPPESEN

13-6

26 NOV 21
Eff.2.Dec.

PUNTA ARENAS, CHILE
VOR Z Rwy 25

PUNTA ARENAS Center (R) 128.1 123.9			PUNTA ARENAS Tower 118.7		Ground 121.9
VOR NAS 114.1	Final Apch Crs 249 [^]	D5.0 1500' (1388')	MDA(H) 480' (368')	Apt Elev 139' Rwy 112'	
MISSED APCH: Climb to 3000' on heading 249 [^] , turn RIGHT direct to NAS VOR, then according to ATC clearance.					4500
Alt Set: hPa Rwy Elev: 4 hPa Trans level: By ATC Trans alt: 10000'					
DME required.					MSA NAS VOR



Gnd speed-Kts	70	90	100	120	140	160	ALSF-I PAPI 3000' on 249 [^] hdg
Descent Angle	2.93 [^]	363	466	518	622	829	
MAP at D1.0							
FAF to MAP	4.0	3:26	2:40	2:24	2:00	1:43	1:30

STRAIGHT-IN LANDING RWY 25			CIRCLE-TO-LAND		
MDA(H) 480' (368')			MDA(H)		
		ALS out	Max Kts		
A	1.2 km	1.6 km	90	640'(501') -1.6 km	
B			120	800'(661') -2.8 km	
C		2.0 km	140	800'(661') -2.8 km	
D			165	960'(821') -4.4 km	

CHANGES: Transition altitude.

SCCI/PUQ

JEPPESEN

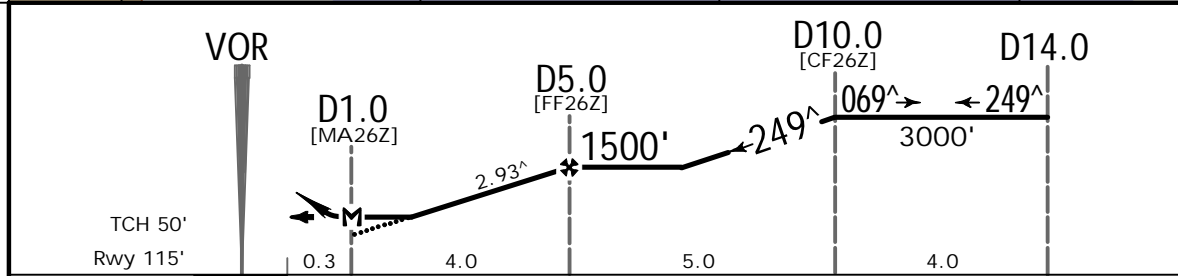
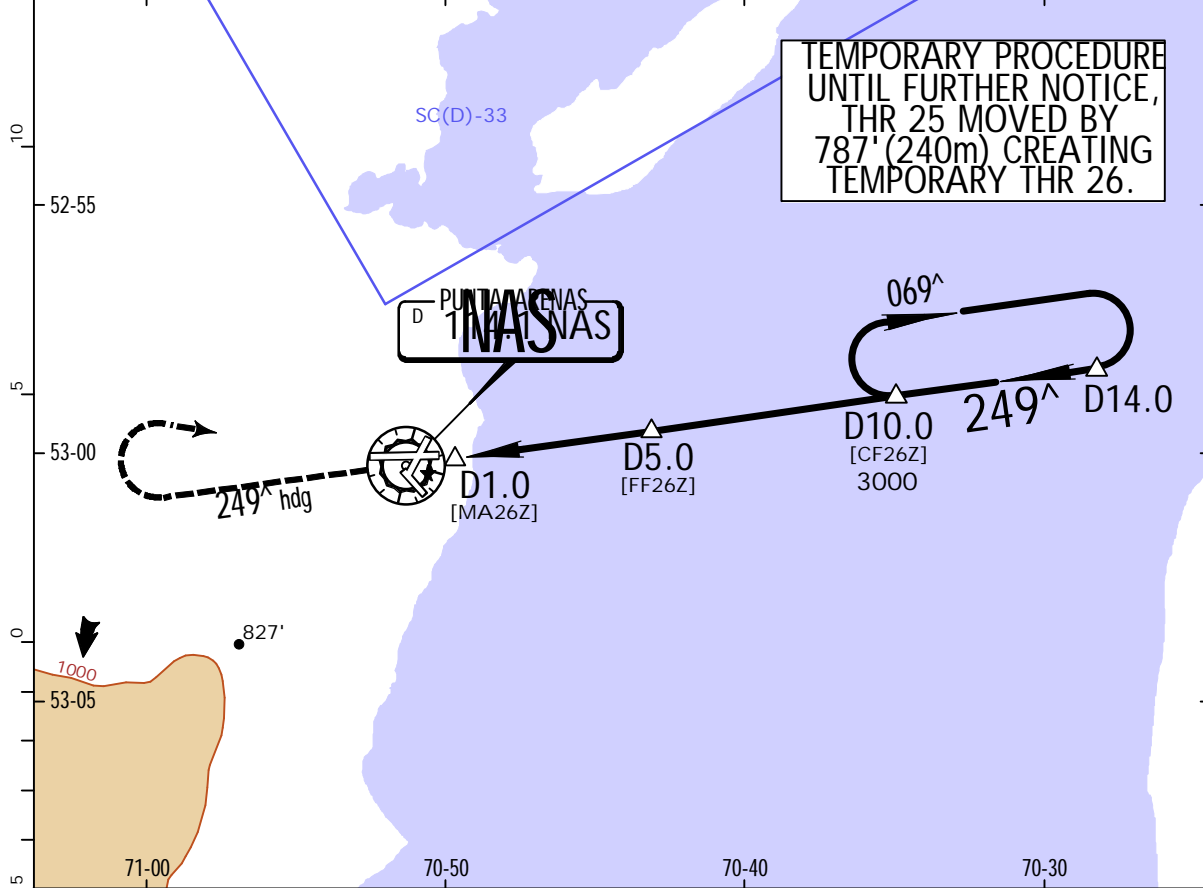
PUNTA ARENAS, CHILE
VOR Z Rwy 26

CARLOS IBANEZ DEL CAMPO INTL

13-6-0

16 SEP 22
.Eff.26.Sep.

PUNTA ARENAS Center (R)			PUNTA ARENAS Tower		Ground
128.1 123.9			118.7		121.9
VOR NAS 114.1	Final Apch Crs 249 [^]	D5.0 1500' (1385')	MDA(H) 480' (365')	Apt Elev 139' Rwy 115'	4500
MISSED APCH: Climb to 3000' on heading 249 [^] , turn RIGHT direct to NAS VOR, then according to ATC clearance.					
Alt Set: hPa		Rwy Elev: 4 hPa	Trans level: By ATC	Trans alt: 10000'	
DME required.					MSA NAS VOR



Gnd speed-Kts	70	90	100	120	140	160	PAPI-L	3000' on 249 [^] hdg
Descent Angle	2.93 [^]	363	466	518	622	829		
MAP at D1.0								

STRAIGHT-IN LANDING RWY 26				CIRCLE-TO-LAND			
MDA(H) 480' (365')				MDA(H)			
A	1.6 km			Max Kts	90		
B				120	640'(501') -1.6 km		
C				140	800'(661') -2.8 km		
D	2.0 km			165	960'(821') -4.4 km		

CHANGES: New temporary procedure.

JEPPESEN, 2022. ALL RIGHTS RESERVED.

SCCI/PUQ

CARLOS IBANEZ DEL CAMPO INTL

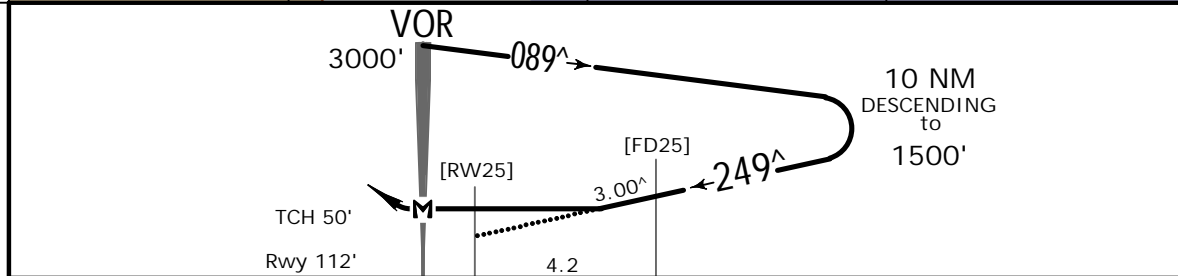
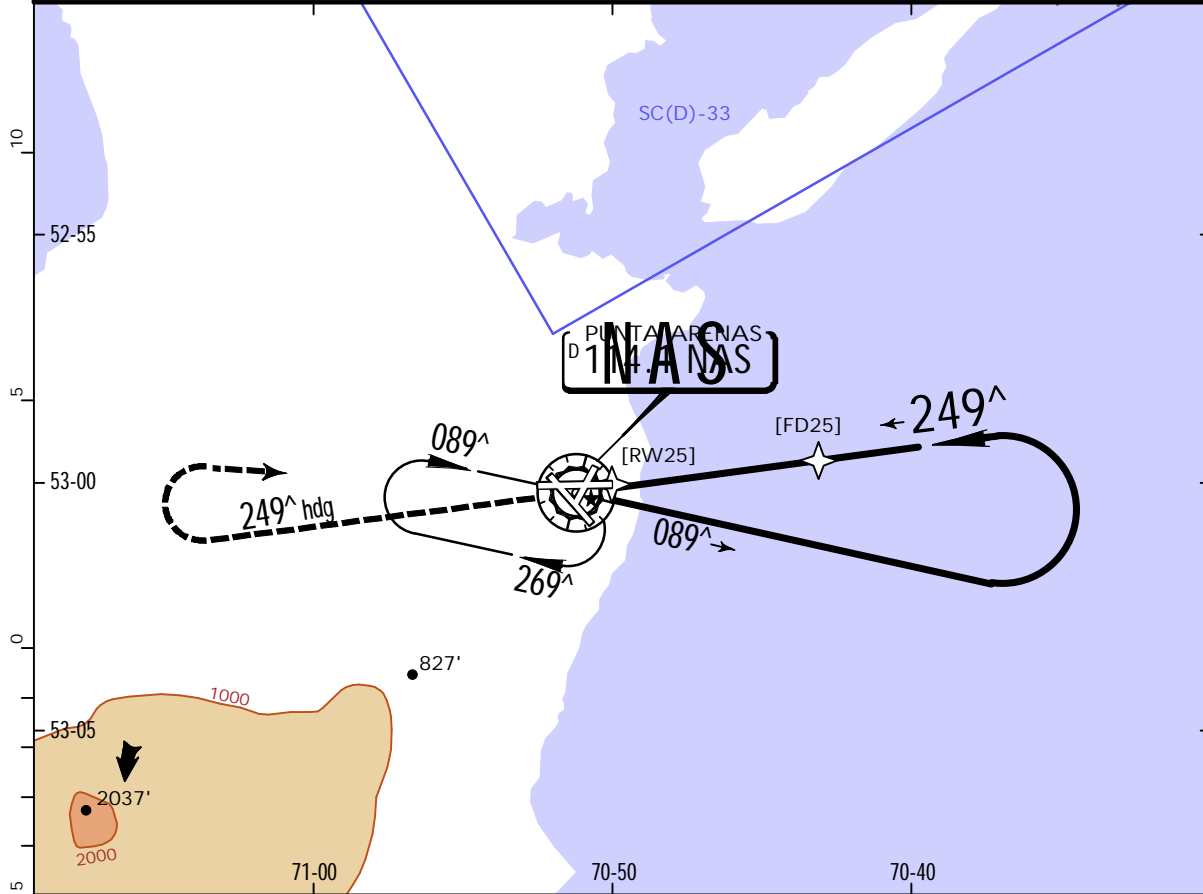
JEPPESEN

13-7

26 NOV 21
Eff. 2. Dec.

PUNTA ARENAS, CHILE
VOR Y Rwy 25

PUNTA ARENAS Approach (R)			PUNTA ARENAS Tower		Ground
128.1 123.9			118.7		121.9
VOR NAS 114.1	Final Apch Crs 249 [^]	No FAF	MDA(H) 520' (408')	Apt Elev 139' Rwy 112'	4500
MISSED APCH: Climb to 3000' on heading 249 [^] , turn RIGHT direct to NAS VOR, enter holding 089 [^] .					
Alt Set: hPa	Rwy Elev: 4 hPa	Trans level: By ATC	Trans alt: 10000'	MSA NAS VOR	



Gnd speed-Kts	70	90	100	120	140	160	
Descent Angle 3.00 [^]	372	478	531	637	743	849	
MAP at VOR							

STRAIGHT-IN LANDING RWY 25			CIRCLE-TO-LAND		
MDA(H) 520' (408')			MDA(H)		
		ALS out	Max Kts		
A	1.2 km	1.6 km	90	640'(501') -1.6 km	
B			120	800'(661') -2.8 km	
C		2.0 km	140	800'(661') -2.8 km	
D			165	960'(821') -4.4 km	

CHANGES: Transition altitude.

SCCI/PUQ

CARLOS IBANEZ DEL CAMPO INTL

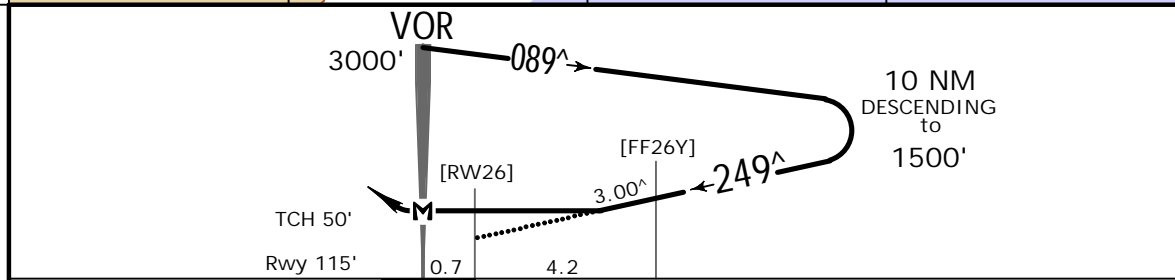
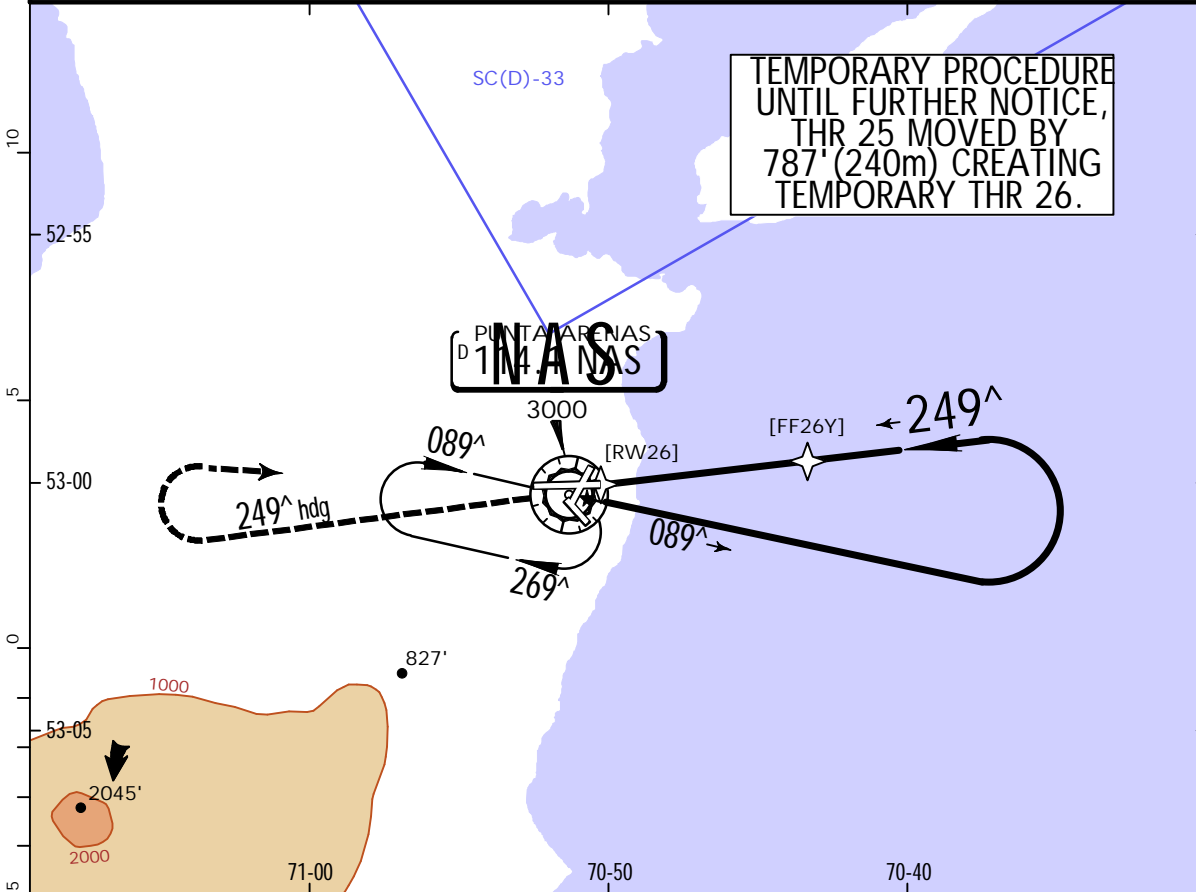


13-7-0

16 SEP 22
Eff. 26 Sep.

PUNTA ARENAS, CHILE
VOR Y Rwy 26

PUNTA ARENAS Approach (R)			PUNTA ARENAS Tower		Ground
128.1 123.9			118.7		121.9
VOR NAS 114.1	Final Apch Crs 249 [^]	No FAF	MDA(H) 520' (405')	Apt Elev 139' Rwy 115'	4500
MISSED APCH: Climb to 3000' on heading 249 [^] , turn RIGHT direct to NAS VOR, enter holding 089 [^] .					
Alt Set: hPa	Rwy Elev: 4 hPa	Trans level: By ATC	Trans alt: 10000'	MSA NAS VOR	



Gnd speed-Kts	70	90	100	120	140	160	PAPI-L	3000' on 249 [^] hdg
Descent Angle 3.00 [^]	372	478	531	637	743	849		
MAP at VOR								

STRAIGHT-IN LANDING RWY 26			CIRCLE-TO-LAND		
MDA(H) 520' (405')			MDA(H)		
A	1.6 km		Max Kts	640' (501') - 1.6 km	
B			90		
C	2.0 km		120	800' (661') - 2.8 km	
D			140		
			165	960' (821') - 4.4 km	

CHANGES: New temporary procedure.

JEPPesen, 2022. ALL RIGHTS RESERVED.

SCCI/PUQ

CARLOS IBANEZ DEL CAMPO INTL

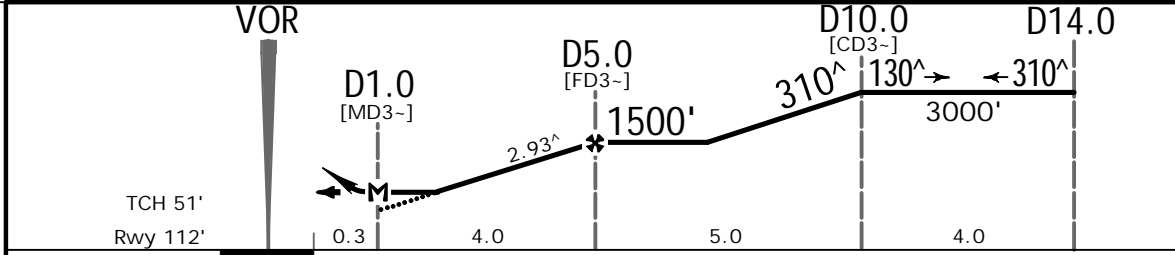
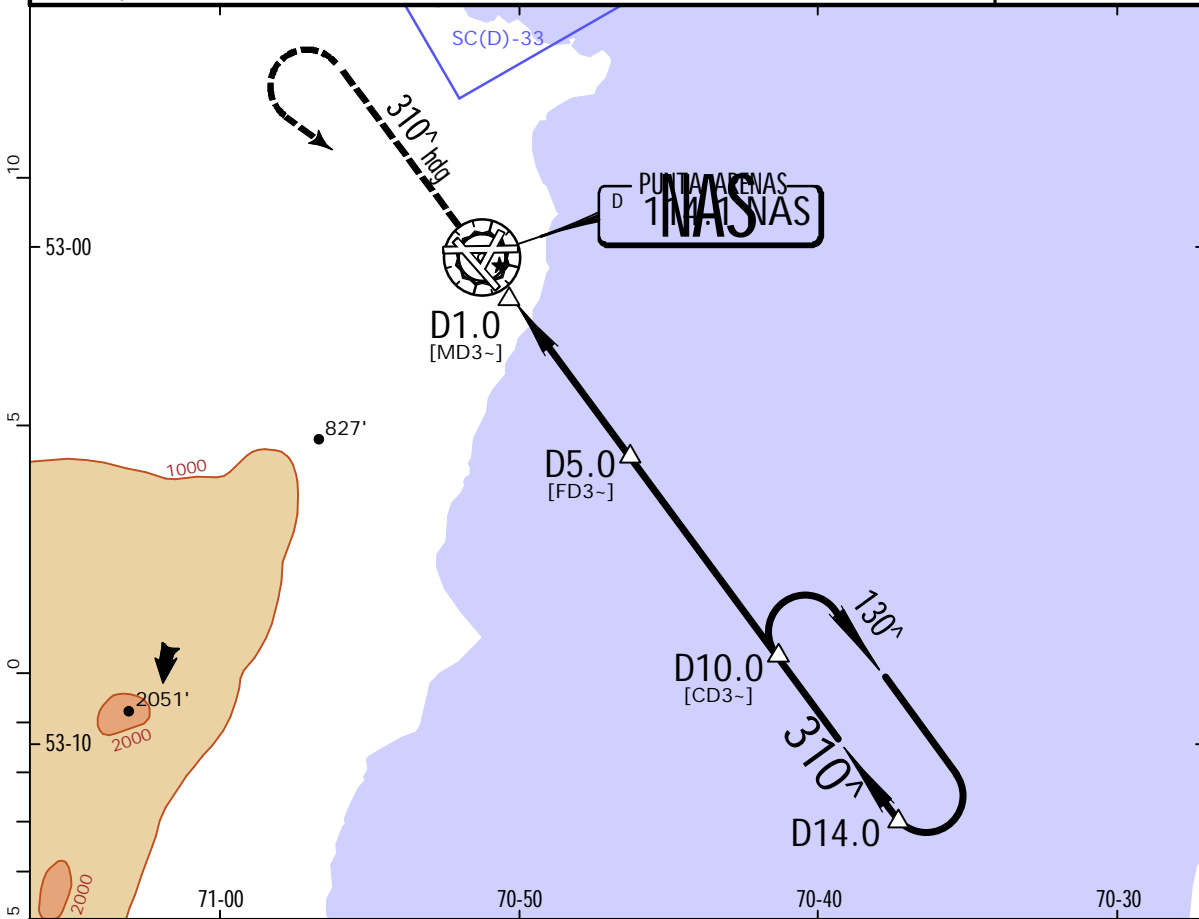
JEPPESEN

13-8

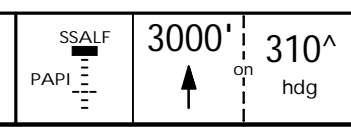
26 NOV 21
Eff. 2. Dec.

PUNTA ARENAS, CHILE
VOR Z Rwy 30

PUNTA ARENAS Approach (R)			PUNTA ARENAS Tower		Ground
128.1 123.9			118.7		121.9
VOR NAS 114.1	Final Apch Crs 310 [^]	D5.0 1500' (1388')	MDA(H) 420' (308')	Apt Elev 139' Rwy 112'	4500
MISSED APCH: Climb to 3000' on heading 310 [^] , turn LEFT direct to NAS VOR, then according to ATC clearance.					
Alt Set: hPa		Rwy Elev: 4 hPa	Trans level: By ATC		Trans alt: 10000'
DME required.					MSA NAS VOR



Gnd speed-Kts	70	90	100	120	140	160
Descent Angle 2.93 [^]	363	466	518	622	726	829
MAP at D1.0						
FAF to MAP	4.0	3:26	2:40	2:24	2:00	1:43 1:30



STRAIGHT-IN LANDING RWY 30			CIRCLE-TO-LAND		
MDA(H) 420' (308')			MDA(H)		
ALS out			Max Kts.		
A			90	640' (501') -1.6 km	
B			120	800' (661') -2.8 km	
C	1.2 km	1.6 km	140	960' (821') -4.4 km	
D			165		

CHANGES: Transition altitude.

SCCI/PUQ

CARLOS IBANEZ DEL CAMPO INTL

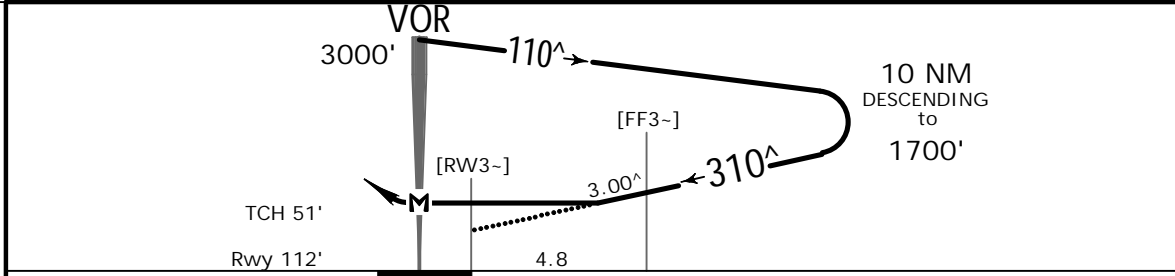
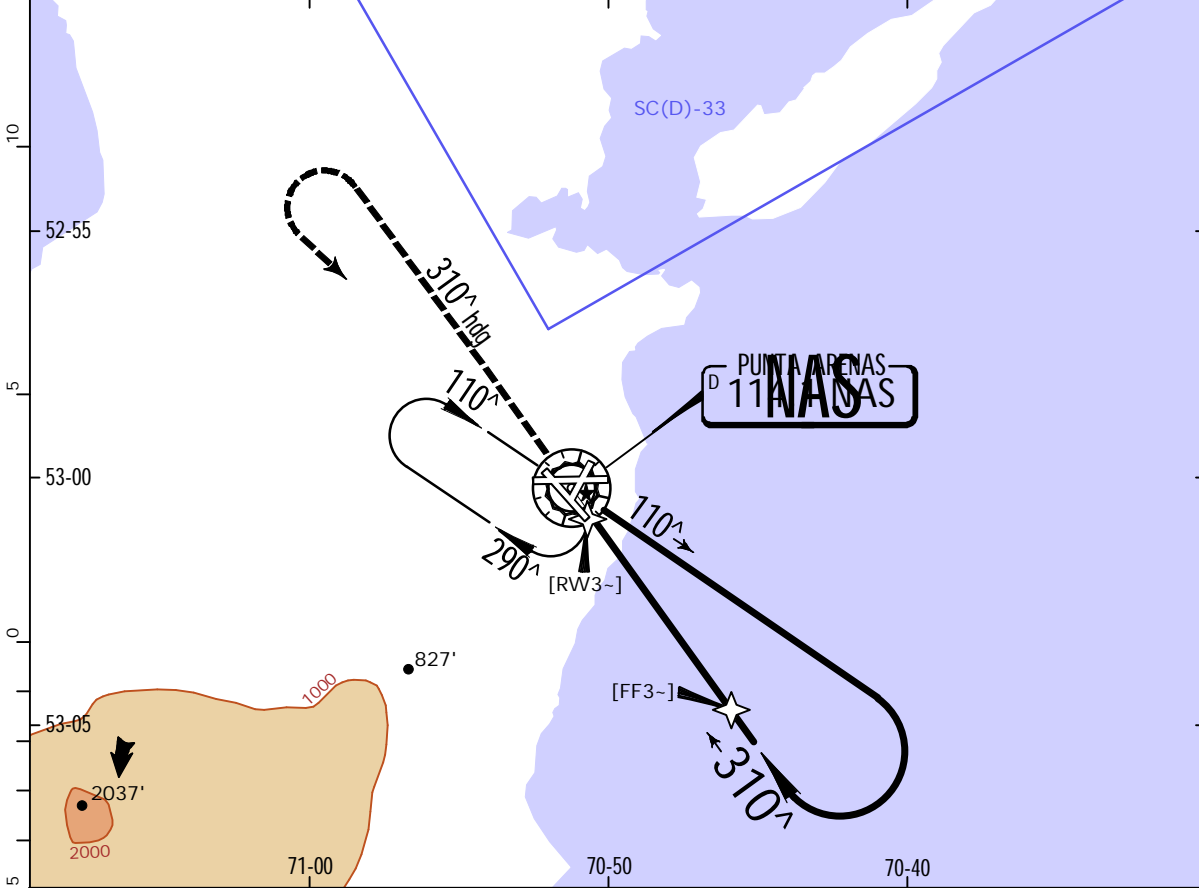
JEPPESEN

13-9

26 NOV 21
Eff. 2. Dec.

PUNTA ARENAS, CHILE
VOR Y Rwy 30

PUNTA ARENAS Approach (R)			PUNTA ARENAS Tower		Ground
128.1 123.9		118.7		121.9	
VOR NAS 114.1	Final Apch Crs 310 [^]	No FAF	MDA(H) 460' (348')	Apt Elev 139' Rwy 112'	4500
MISSED APCH: Climb to 3000' on heading 310 [^] , turn LEFT direct to NAS VOR, enter holding 110 [^] .					
Alt Set: hPa	Rwy Elev: 4 hPa	Trans level: By ATC	Trans alt: 10000'	MSA NAS VOR	



Gnd speed-Kts	70	90	100	120	140	160	SSALF PAPI	3000' on 310 [^] hdg
Descent Angle 3.00 [^]	372	478	531	637	743	849		
MAP at VOR								

STRAIGHT-IN LANDING RWY 30			CIRCLE-TO-LAND		
MDA(H) 460' (348')			MDA(H)		
ALS out			Max Kts		
A			90	640' (501') -1.6 km	
B			120	800' (661') -2.8 km	
C	1.2 km	1.6 km	140	960' (821') -4.4 km	
D			165		

CHANGES: Transition altitude.

Chart changes since cycle 06-2023

ADD = added chart, REV = revised chart, DEL = deleted chart.

ACT	PROCEDURE IDENT	INDEX	REV DATE	EFF DATE
-----	-----------------	-------	----------	----------

PUNTA ARENAS, (CARLOS IBANEZ DEL CAMPO INTL - SCCI)

TERMINAL CHART CHANGE NOTICES

Chart Change Notices for Airport SCCI

Type: Terminal

Effectivity: Temporary

Begin Date: 20210926

End Date: Until Further Notice

Due to construction on twy A and rwy 12, (13-4) VOR Y RWY 12 is unusable and is temporarily replaced by (13-4-0) VOR Y Rwy 13 and is limited to categories A and B.

Type: Terminal

Effectivity: Temporary

Begin Date: Immediately

End Date: Until Further Notice

(10-2A) Runway 12 designator changed temporarily to Runway 13 due to planned taxiway works and threshold displacement, per SUP S12-21

Type: Terminal

Effectivity: Temporary

Begin Date: 20210926

End Date: Until Further Notice

Due to construction on taxiway A and runway 12, the following procedures are limited to categories A and B only: (12-22) RNAV (RNP) Z RWY 30, (12-4) RNAV (GNSS) Y RWY 30, (13-8) VOR Z RWY 30, and (13-9) VOR Y RWY 30.

Type: Terminal

Effectivity: Temporary

Begin Date: 20220926

End Date: Until Further Notice

During the construction works, when RWY 25 THR is displaced, all STAR and SID procedures published for RWY 25 should be used for RWY 26 respectively. The planned period for the displaced THR 25 is from 26 September 2022 until 25 March 2023. Please refer to most current NOTAMs.

Type: Terminal

Effectivity: Temporary

Begin Date: 20210926

End Date: Until Further Notice

Due to construction on Twy A and Rwy 12 the following procedures are unusable: (12-2) RNAV (GNSS) RWY 12, (13-3) VOR Z RWY 12.

Type: Terminal

Effectivity: Temporary

Begin Date: 20210926

End Date: Until Further Notice

Due to planned work on twy A and rwy 12, threshold rwy 12 is moved 1200m. The displaced threshold 12 will be called threshold 13. Declared distances for rwy 13/30 are TORA 1200m, TODA 1200m, ASDA 1200m, LDA 1200m. Acft may experience delays on the platform. All aircraft that require to stay overnight at the aerodrome, must coordinate at least with 24 hours in advance, subject to availability.