

List of pages in this Trip Kit

Trip Kit Index
Airport Information For MUHA
Terminal Charts For MUHA
Revision Letter For Cycle 07-2023
Change Notices
Notebook

General Information

Location: HAVANA CUB
ICAO/IATA: MUHA / HAV
Lat/Long: N22° 59.35', W082° 24.55'
Elevation: 210 ft

Airport Use: Public
Daylight Savings: Observed
UTC Conversion: +5:00 = UTC
Magnetic Variation: 5.0° W

Fuel Types: 100-130 Octane, Jet A-1
Repair Types: Major Airframe, Major Engine
Customs: Yes
Airport Type: IFR
Landing Fee: Yes
Control Tower: Yes
Jet Start Unit: No
LLWS Alert: No
Beacon: Yes

Sunrise: 1109 Z
Sunset: 2351 Z

Runway Information

Runway: 06
Length x Width: 13123 ft x 148 ft
Surface Type: concrete
TDZ-Elev: 210 ft
Lighting: Edge, ALS
Stopway: 197 ft

Runway: 24
Length x Width: 13123 ft x 148 ft
Surface Type: concrete
TDZ-Elev: 210 ft
Lighting: Edge, ALS
Stopway: 197 ft

Communication Information

ATIS: 132.500
Marti Tower: 118.100

Marti Tower: 121.900 Secondary
Marti Ground: 121.900
Marti Ground: 118.100 Secondary
Havana Approach: 119.350 Secondary
Havana Approach: 120.300
Boyerros Radio: 556.200 Air-Ground
Boyerros Radio: 887.600 Air-Ground
Boyerros Radio: 1132.100 Air-Ground
Boyerros Radio: 126.900 Air-Ground

MUHA/HAV
JOSE MARTI INTL

JEPPESSEN HAVANA, CUBA
25 NOV 22 (10-2) Eff. 1. Dec. .RNAV .STAR.

ATIS
132.5

Apt Elev
210

Alt Set: hPa Trans level: By ATC

RNAV-1

ALMIT1 [ALMIT1]
EPMAR4 [EPMAR4]
FARAC5 [FARAC5]
KAVUL4B [KAVUL4B]
RNAV CDO ARRIVALS
(RWY 24)

KAVUL
1 MINUT
4.1 NM
MAX 230 KT
MAX FL140
MHA 3000

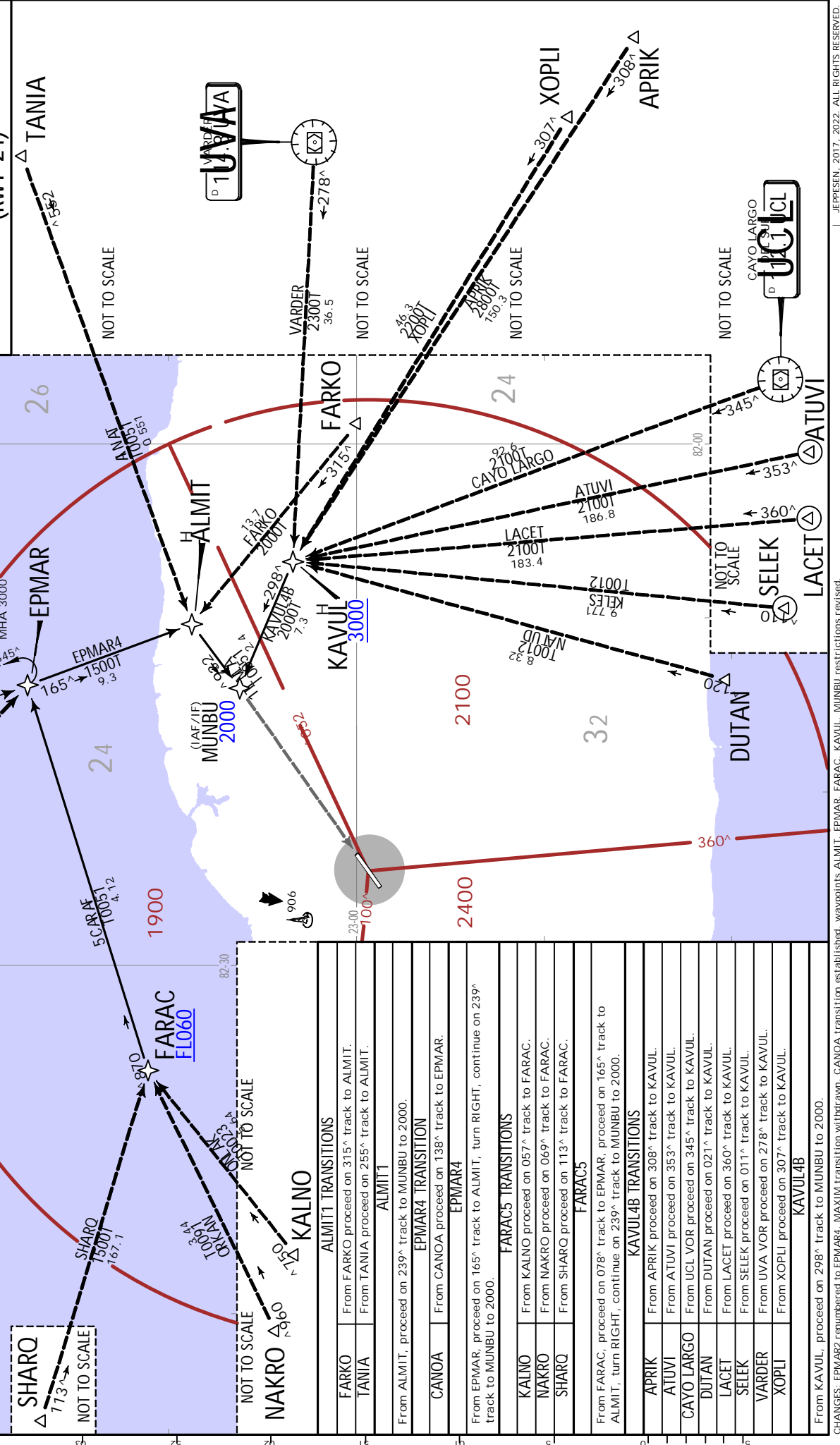
ALMIT
1 MINUT
4.1 NM
MAX 230 KT
MAX FL140
MHA 3000

CANOA
NOT TO SCALE

EPMAR
1 MINUT
4.1 NM
MAX 230 KT
MAX FL140
MHA 3000

MUNBU
(IAF/IF)
2000

FARAC FLO60
NOT TO SCALE



SHARO
713^
NOT TO SCALE

NAKRO
1960

KALNO
NOT TO SCALE

ALMIT1 TRANSITIONS
From FARKO proceed on 315^ track to ALMIT.
From TANIA proceed on 255^ track to ALMIT.

ALMIT1
From ALMIT, proceed on 239^ track to MUNBU to 2000.

ALMIT1 TRANSITION
From CANOA proceed on 138^ track to EPMAR.

EPMAR4
From EPMAR, proceed on 165^ track to ALMIT, turn RIGHT, continue on 239^ track to MUNBU to 2000.

FARAC5 TRANSITIONS
From KALNO proceed on 057^ track to FARAC.
From NAKRO proceed on 069^ track to FARAC.
From SHARO proceed on 113^ track to FARAC.

FARAC5
From FARAC, proceed on 078^ track to EPMAR, proceed on 165^ track to ALMIT, turn RIGHT, continue on 239^ track to MUNBU to 2000.

KAVUL4B TRANSITIONS
From APRIK proceed on 308^ track to KAVUL.
From ATUVI proceed on 353^ track to KAVUL.

CAYO LARGO
From UCL VOR proceed on 345^ track to KAVUL.
From DUTAN proceed on 021^ track to KAVUL.

LACET
From LACET proceed on 360^ track to KAVUL.
From SELEK proceed on 011^ track to KAVUL.
From UVA VOR proceed on 278^ track to KAVUL.

XOPLI
From XOPLI proceed on 307^ track to KAVUL.

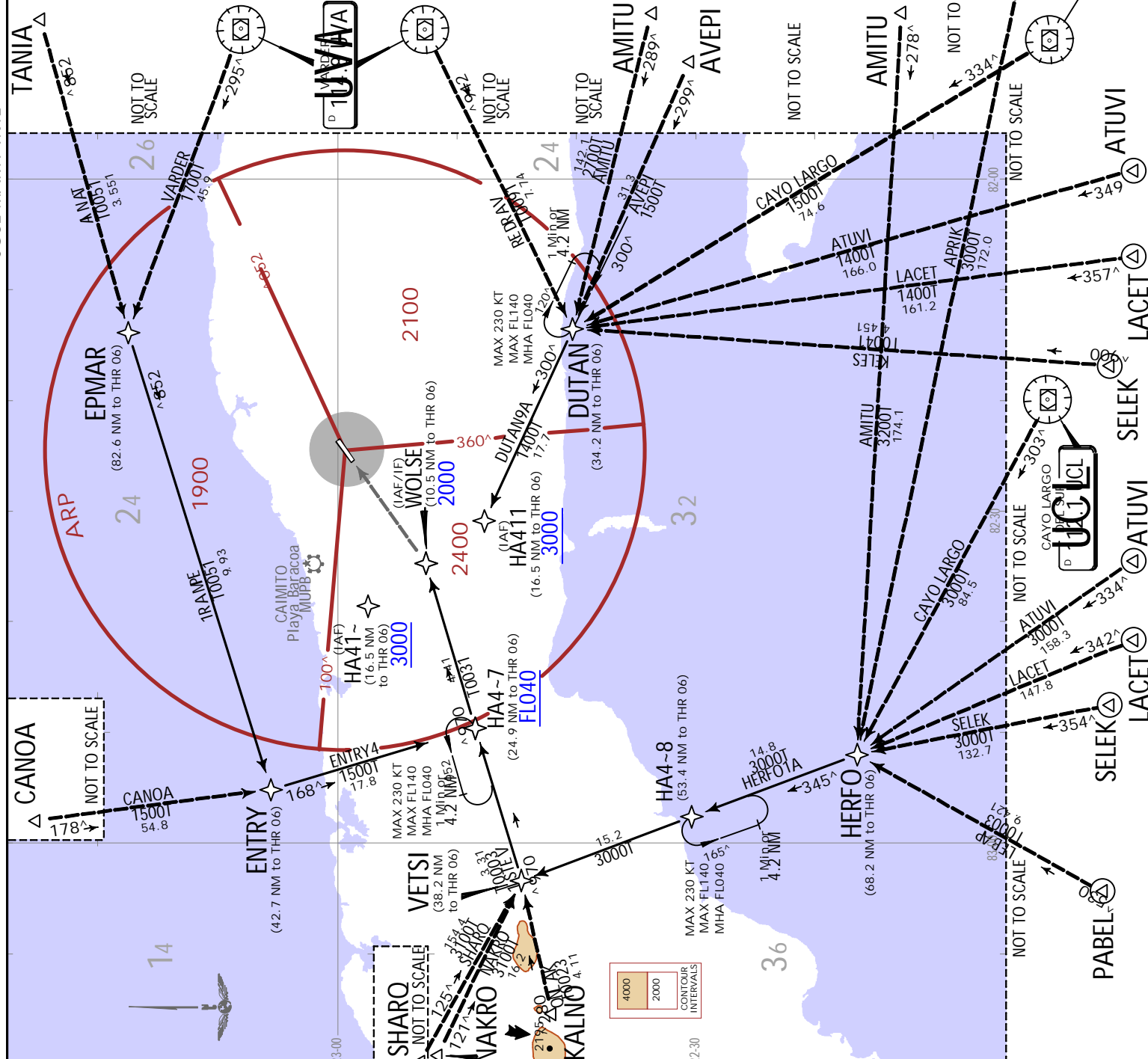
KAVUL4B
From KAVUL, proceed on 298^ track to MUNBU to 2000.

CHANGES: EPMAR2 renumbered to EPMAR4. MAXIM1 transition withdrawn. CANOA transition established. waypoints ALMIT, EPMAR, FARKO, KAVUL, MUNBU restrictions revised. JEPPESSEN, 2017, 2022. ALL RIGHTS RESERVED.

JEPPESEN
 25 NOV 22 (10-2A) .Eff. 1. Dec.
HAVANA, CUBA
 .RNAV .STAR.

MUHA/HAV
 JOSE MARTI INTL

ATIS	Apt Elev	Alt Set: hPa	Trans level: By ATC
132.5	210	RNAV-1	
DUTAN9A [DUTA9A], ENTRY4 [ENTRY4]			
EPMAR1 [EPMAR1], HERFO1A [HERFO1A]			
VETS11 [VETS11]			
RNAV CDO ARRIVALS (RWY 06)			
DUTAN9A TRANSITIONS			
AMITU From AMITU proceed on 289° track to DUTAN.			
ATUVI From ATUVI proceed on 349° track to DUTAN.			
AVEPI From AVEPI proceed on 299° track to DUTAN.			
CAYO LARGO From UCL VOR proceed on 334° track to DUTAN.			
LACET From LACET proceed on 357° track to DUTAN.			
SELEK From SELEK proceed on 009° track to DUTAN.			
VARDER From UVA VOR proceed on 249° track to DUTAN.			
DUTAN9A			
From DUTAN proceed on 300° track to HA411, at or above 3000.			
ENTRY4 TRANSITION			
CANOA From CANOA proceed on 178° track to ENTRY.			
ENTRY4			
From ENTRY proceed on 168° track to HA4-7, turn LEFT, continue on 079° track until WOLSE to 2000.			
EPMAR1 TRANSITIONS			
TANIA From TANIA proceed on 258° track to EPMAR.			
VARDER From UVA VOR proceed on 295° track to EPMAR.			
EPMARI			
From EPMAR proceed on 258° track to ENTRY, continue on 168° track to HA4-7, turn LEFT, continue on 079° track to WOLSE to 2000.			
HERFO1A TRANSITIONS			
AMITU From AMITU proceed on 278° track to HERFO.			
APRIK From APRIK proceed on 287° track to HERFO.			
ATUVI From ATUVI proceed on 334° track to HERFO.			
CAYO LARGO From UCL VOR proceed on 303° track to HERFO.			
LACET From LACET proceed on 342° track to HERFO.			
PABEL From PABEL proceed on 035° track to HERFO.			
SELEK From SELEK proceed on 354° track to HERFO.			
HERFO1A			
From HERFO proceed on 345° track to HA4-8, continue on track 345° to VETS11, turn RIGHT, proceed on 079° track to HA4-7, continue on 079° track to WOLSE to 2000.			
VETS11 TRANSITIONS			
KALINO From KALINO proceed on 082° track to VETS11.			
NAKRO From NAKRO proceed on 121° track to VETS11.			
SHARO From SHARO proceed on 129° track to VETS11.			
VETS11			
From VETS11 proceed on 079° track until HA4-7, continue on 079° track until WOLSE to 2000.			
COMMS			
Active SSR 7600 and proceed according to ICAO Annex 2 and Doc. 4444.			
LOST COMMS			
LOST COMMS			
LOST COMMS			
LOST COMMS			

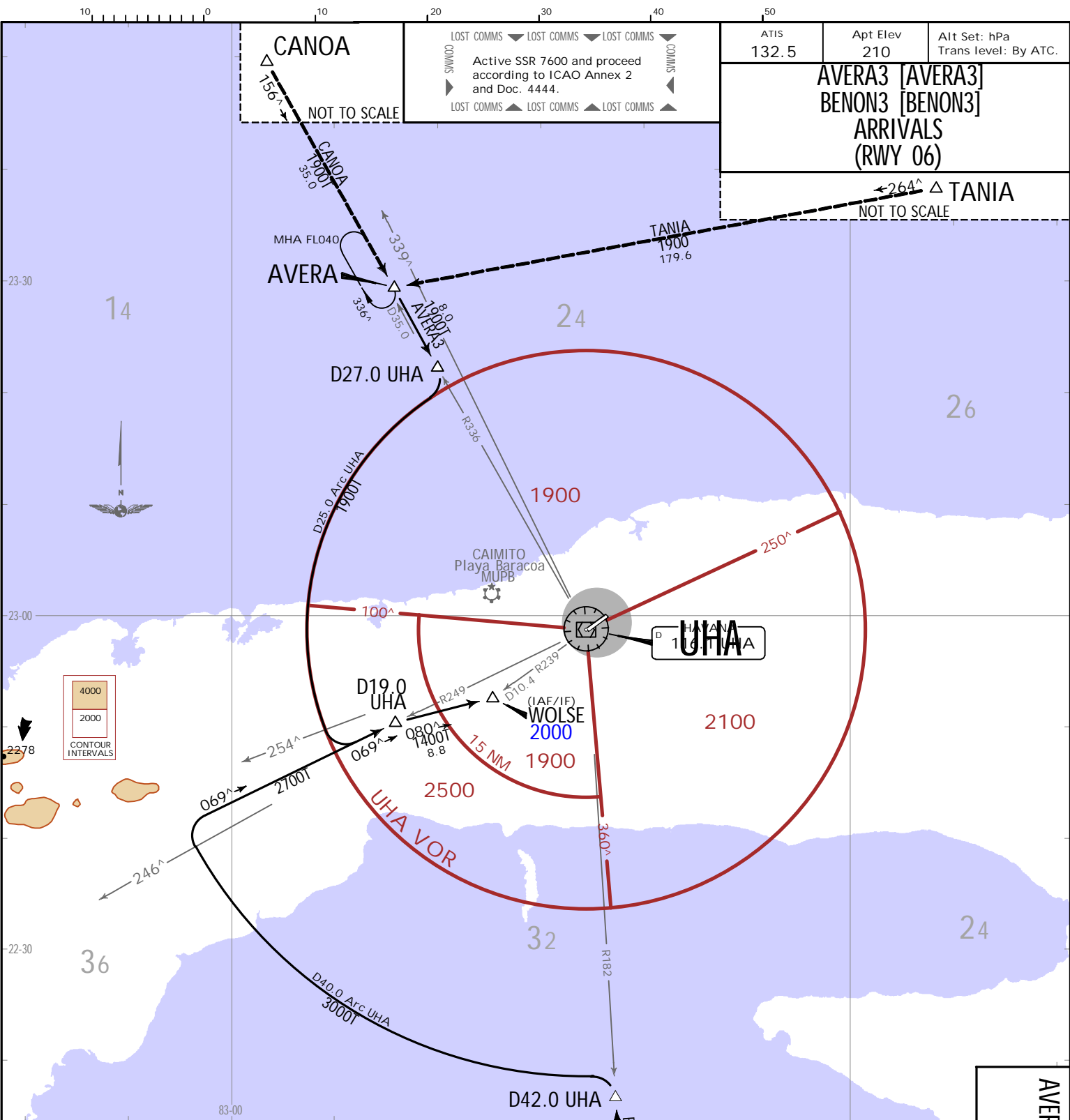


JEPPESEN
 25 NOV 22 (10-2A) .Eff. 1. Dec.
HAVANA, CUBA
 .RNAV .STAR.

MUHA/HAV
 JOSE MARTI INTL

CHANGES: STARS renumbered & revised; JANSE wpt remained to WOLSE; MSA revised

MUHA/HAV
JOSE MARTI INTL



ATIS 132.5	Apt Elev 210	Alt Set: hPa Trans level: By ATC.
AVERA3 [AVERA3] BENON3 [BENON3] ARRIVALS (RWY 06)		

AVERA3 TRANSITIONS	
CANOA	From CANOA proceed on 156° track to AVERA.
TANIA	From TANIA proceed on 264° track to AVERA.
AVERA3	
From AVERA, proceed on UHA R336 to D27.0 UHA, turn RIGHT and intercept D25.0 Arc UHA to intercept UHA R249. Continue on UHA R249 to D19.0 UHA, proceed on 080° track to WOLSE to 2000.	
BENON3 TRANSITIONS	
ATUVI	From ATUVI proceed on 343° track to BENON.
CAYO LARGO	From UCL VOR proceed on 310° track to BENON.
LACET	From LACET proceed on 352° track to BENON.
PABEL	From PABEL proceed on 047° track to BENON.
SELEK	From SELEK proceed on 006° track to BENON.
BENON3	
From BENON, proceed on UHA R182 to D42.0 UHA, turn LEFT and intercept D40.0 Arc UHA to intercept UHA R249. Continue on UHA R249 to D19.0 UHA, proceed on 080° track to WOLSE to 2000.	

AVERA3 [AVERA3], BENON3 [BENON3] ARRIVALS (RWY 06)

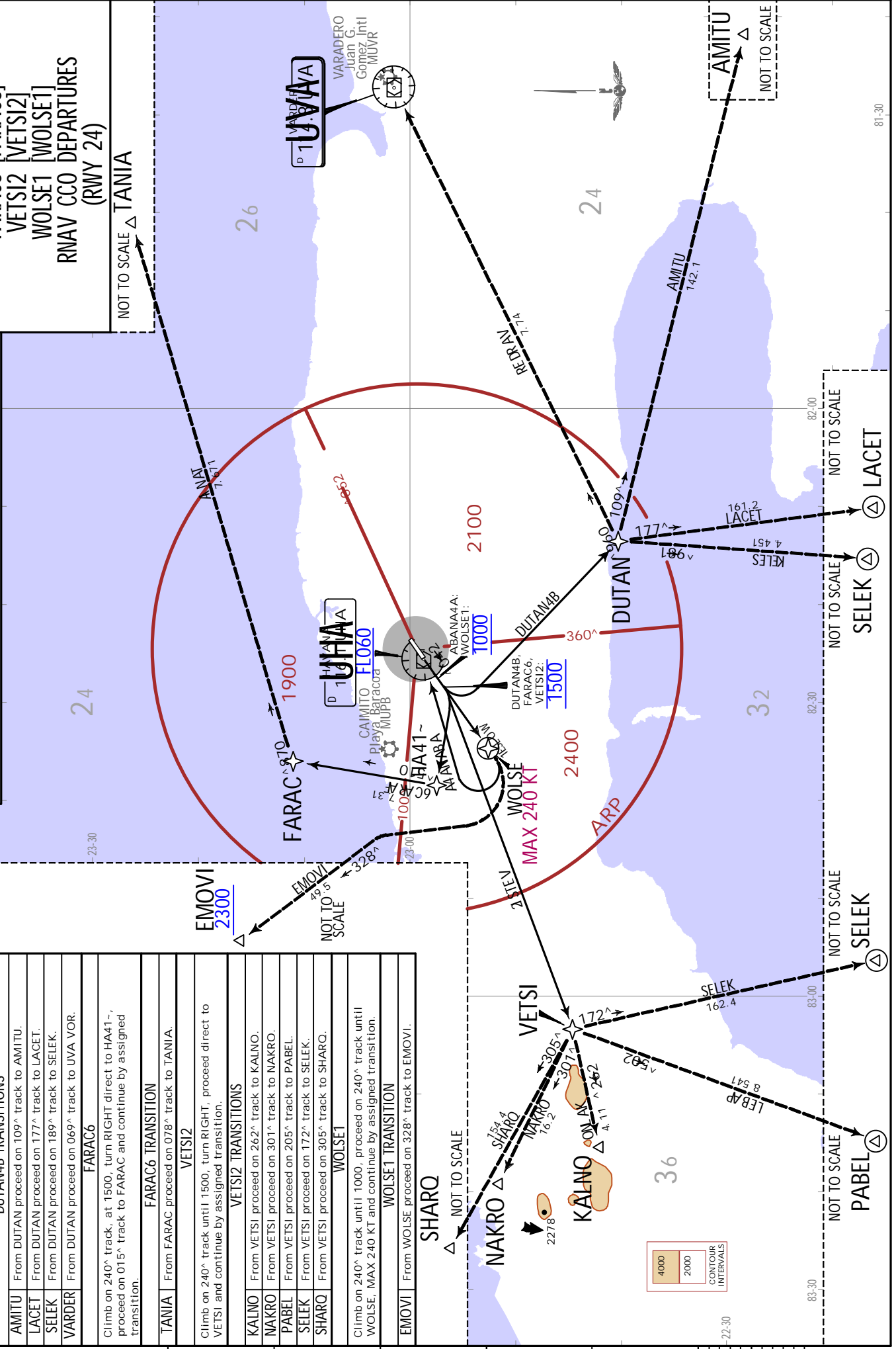
24 DEC 21 (10-2B). EFF: 30 Dec.
JEPPesen HAVANA, CUBA
STAR

MUHA/HAV
 JOSE MARTI INTL
 HAVANA, CUBA
 .RNAV.SID.
 25 NOV 22 10-3 .Eff. 1.Dec.

ABANA4A
 Climb on 240° track until 1000, continue on 240° track until WOLSE, MAX 240 KT, turn RIGHT direct to UHA VOR at or above FLO60, and continue by assigned route as flight plan.
DUTAN4B
 Climb on 240° track until 1500, turn LEFT direct to DUTAN and continue by route or assigned transition.
AMITU From DUTAN proceed on 109° track to AMITU.
LACET From DUTAN proceed on 177° track to LACET.
SELEK From DUTAN proceed on 189° track to SELEK.
VARDER From DUTAN proceed on 069° track to UVA VOR.
FARAC6
 Climb on 240° track, at 1500, turn RIGHT direct to HA41-, proceed on 015° track to FARAC and continue by assigned transition.
TANIA From FARAC proceed on 078° track to TANIA.
VETS12
 Climb on 240° track until 1500, turn RIGHT, proceed direct to VETS1 and continue by assigned transition.
VETS12 TRANSITIONS
KALNO From VETS1 proceed on 262° track to KALNO.
NAKRO From VETS1 proceed on 301° track to NAKRO.
PABEL From VETS1 proceed on 205° track to PABEL.
SELEK From VETS1 proceed on 172° track to SELEK.
SHARO From VETS1 proceed on 305° track to SHARO.
WOLSE1
 Climb on 240° track until 1000, proceed on 240° track until WOLSE, MAX 240 KT and continue by assigned transition.
WOLSE1 TRANSITION
EMOVI From WOLSE proceed on 328° track to EMOVI.

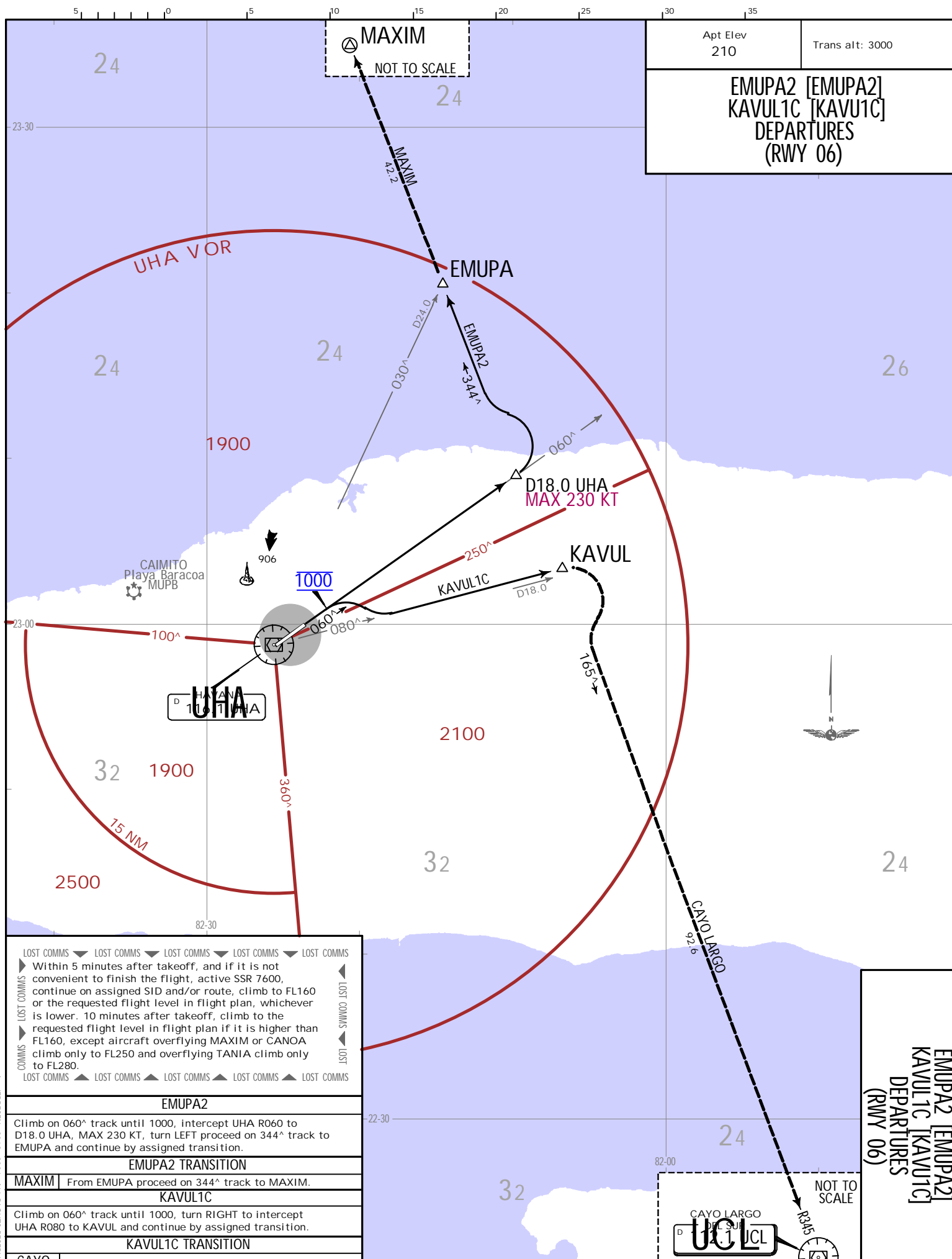
ABANA4A [ABANA4A]
DUTAN4B [DUTA4B]
FARAC6 [FARAC6]
VETS12 [VETS12]
WOLSE1 [WOLSE1]
RNAV CCO DEPARTURES (RWY 24)
 NOT TO SCALE **TANIA**

ABANA4A
 Climb on 240° track until 1000, continue on 240° track until WOLSE, MAX 240 KT, turn RIGHT direct to UHA VOR at or above FLO60, and continue by assigned route as flight plan.
DUTAN4B
 Climb on 240° track until 1500, turn LEFT direct to DUTAN and continue by route or assigned transition.
DUTAN4B TRANSITIONS
AMITU From DUTAN proceed on 109° track to AMITU.
LACET From DUTAN proceed on 177° track to LACET.
SELEK From DUTAN proceed on 189° track to SELEK.
VARDER From DUTAN proceed on 069° track to UVA VOR.
FARAC6
 Climb on 240° track, at 1500, turn RIGHT direct to HA41-, proceed on 015° track to FARAC and continue by assigned transition.
TANIA From FARAC proceed on 078° track to TANIA.
VETS12
 Climb on 240° track until 1500, turn RIGHT, proceed direct to VETS1 and continue by assigned transition.
VETS12 TRANSITIONS
KALNO From VETS1 proceed on 262° track to KALNO.
NAKRO From VETS1 proceed on 301° track to NAKRO.
PABEL From VETS1 proceed on 205° track to PABEL.
SELEK From VETS1 proceed on 172° track to SELEK.
SHARO From VETS1 proceed on 305° track to SHARO.
WOLSE1
 Climb on 240° track until 1000, proceed on 240° track until WOLSE, MAX 240 KT and continue by assigned transition.
WOLSE1 TRANSITION
EMOVI From WOLSE proceed on 328° track to EMOVI.



CHANGES: Altitude restriction and MSA revised

MUHA/HAV
JOSE MARTI INTL



Apt Elev 210	Trans alt: 3000
EMUPA2 [EMUPA2] KAVUL1C [KAVUL1C] DEPARTURES (RWY 06)	

LOST COMMS ▼ LOST COMMS ▼ LOST COMMS ▼ LOST COMMS ▼ LOST COMMS ▶ Within 5 minutes after takeoff, and if it is not convenient to finish the flight, active SSR 7600, continue on assigned SID and/or route, climb to FL160 or the requested flight level in flight plan, whichever is lower. 10 minutes after takeoff, climb to the requested flight level in flight plan if it is higher than FL160, except aircraft overflying MAXIM or CANOA climb only to FL250 and overflying TANIA climb only to FL280. LOST COMMS ▲ LOST COMMS ▲ LOST COMMS ▲ LOST COMMS ▲ LOST COMMS				
EMUPA2				
Climb on 060° track until 1000, intercept UHA R060 to D18.0 UHA, MAX 230 KT, turn LEFT proceed on 344° track to EMUPA and continue by assigned transition.				
EMUPA2 TRANSITION				
MAXIM	From EMUPA proceed on 344° track to MAXIM.			
KAVUL1C				
Climb on 060° track until 1000, turn RIGHT to intercept UHA R080 to KAVUL and continue by assigned transition.				
KAVUL1C TRANSITION				
CAYO LARGO	From KAVUL proceed on 165° track to UCL VOR.			

EMUPA2 [EMUPA2] KAVUL1C [KAVUL1C] DEPARTURES (RWY 06)	
--	--

24 DEC 21 (10-3B) EFF: 30 Dec.
JEPPESSEN HAVANA, CUBA
 SID

MUHA/HAV

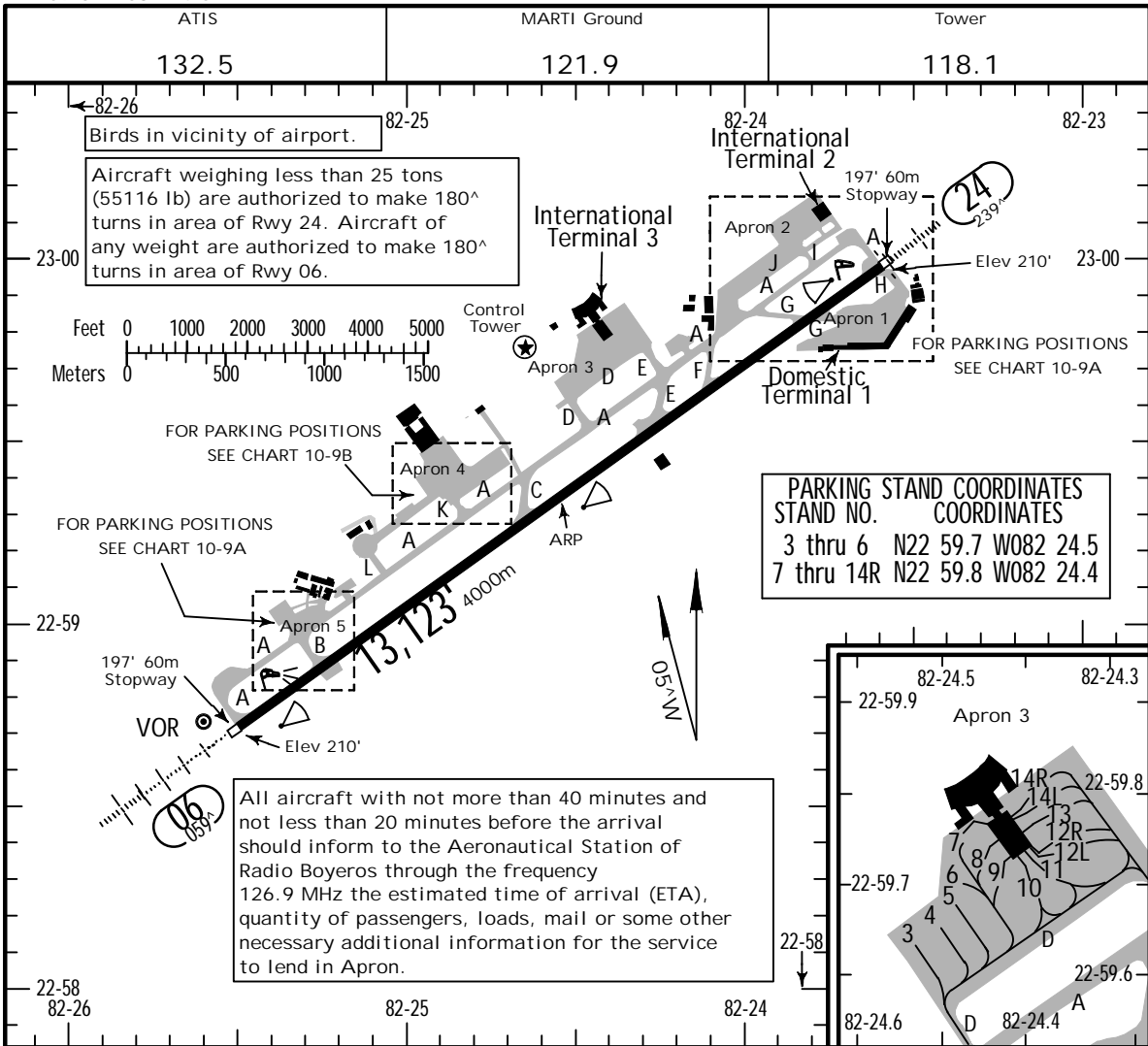
Apt Elev 210
N22 59.3 W082 24.6

JEPPESEN

23 DEC 22 **(10-9)**

HAVANA, CUBA

JOSE MARTI INTL



RWY	ADDITIONAL RUNWAY INFORMATION			
	USABLE LENGTHS		TAKE-OFF	WIDTH
	Threshold	Landing Beyond		
06	HIRL HIALS PAPI -L (angle 3.0°)	RVR	12,188'	3715m
24	HIRL SALS PAPI -L (angle 3.0°)	RVR		

.State.		TAKE-OFF & DEPARTURE PROCEDURE
1 & 2 Eng		VO.8 km
3 & 4 Eng		

DEPARTURE PROCEDURE: CAT C and D: Left turn prohibited Rwy 06.

Aircraft motor tests prohibited in aircraft stands designated for service to aircraft and its passengers.

Start-up prohibited before and during the process of pushing and/or pulling of parked aircraft that require this service for their departure. Exceptions are those aircraft that have inoperative APU (Air Power Unit) and need to use the ASU (Pneumatic Start Unit) to start engine.

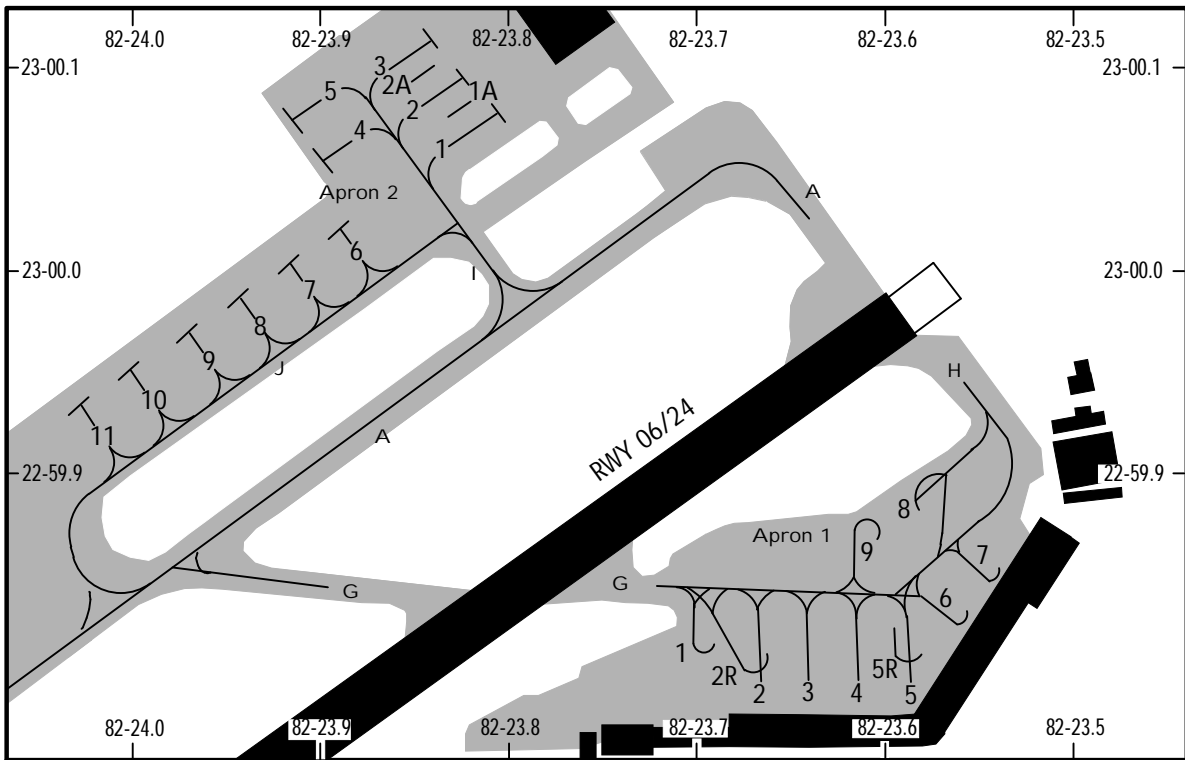
MUHA/HAV

JEPPESEN

HAVANA, CUBA

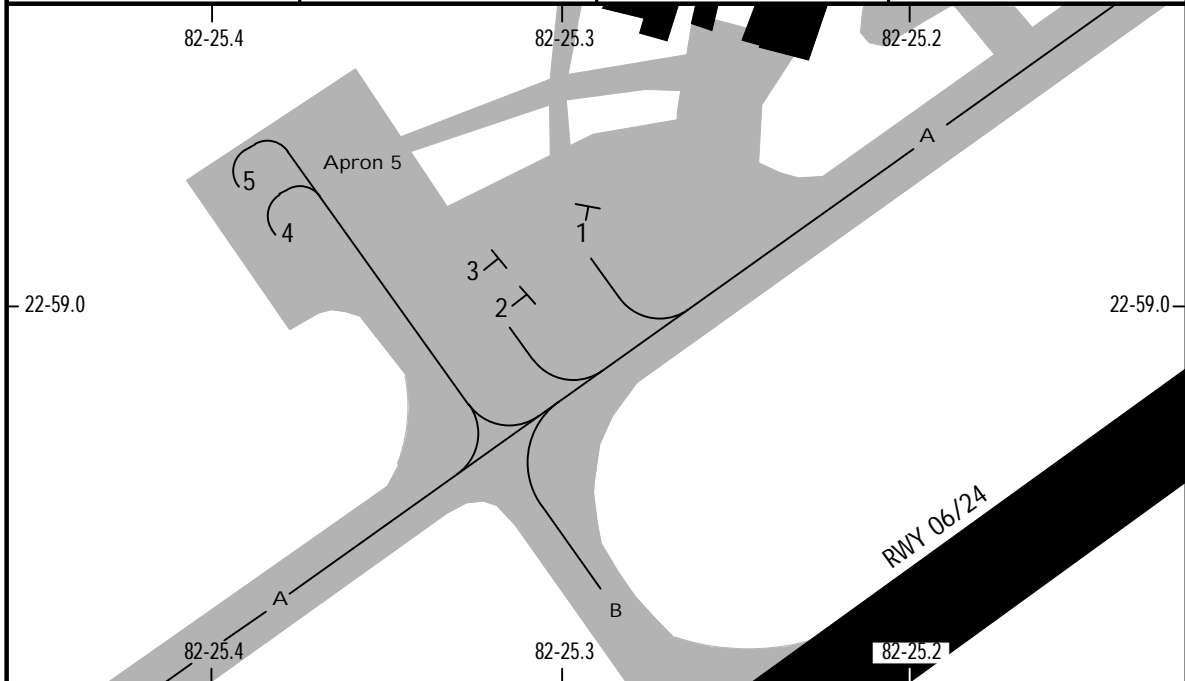
23 DEC 22 (10-9A)

JOSE MARTI INTL



PARKING STAND COORDINATES

STAND No.	COORDINATES	STAND No.	COORDINATES
Apron 1		Apron 2	
1, 2, 2R	N22 59.8 W082 23.7	1 thru 3	N23 00.1 W082 23.8
3 thru 5R	N22 59.8 W082 23.6	4, 5	N23 00.1 W082 23.9
6, 7	N22 59.8 W082 23.5	6, 7	N23 00.0 W082 23.9
8, 9	N22 59.9 W082 23.6	8 thru 10	N23 00.0 W082 24.0
		11	N22 59.9 W082 24.0



PARKING STAND COORDINATES

STAND No.	COORDINATES
Apron 5	
1 thru 3	N22 59.0 W082 25.3
4, 5	N22 59.0 W082 25.4

CHANGES: Apron 1 parking stands and coords, Apron 5 parking stands.

JEPPESEN, 2013, 2022. ALL RIGHTS RESERVED.

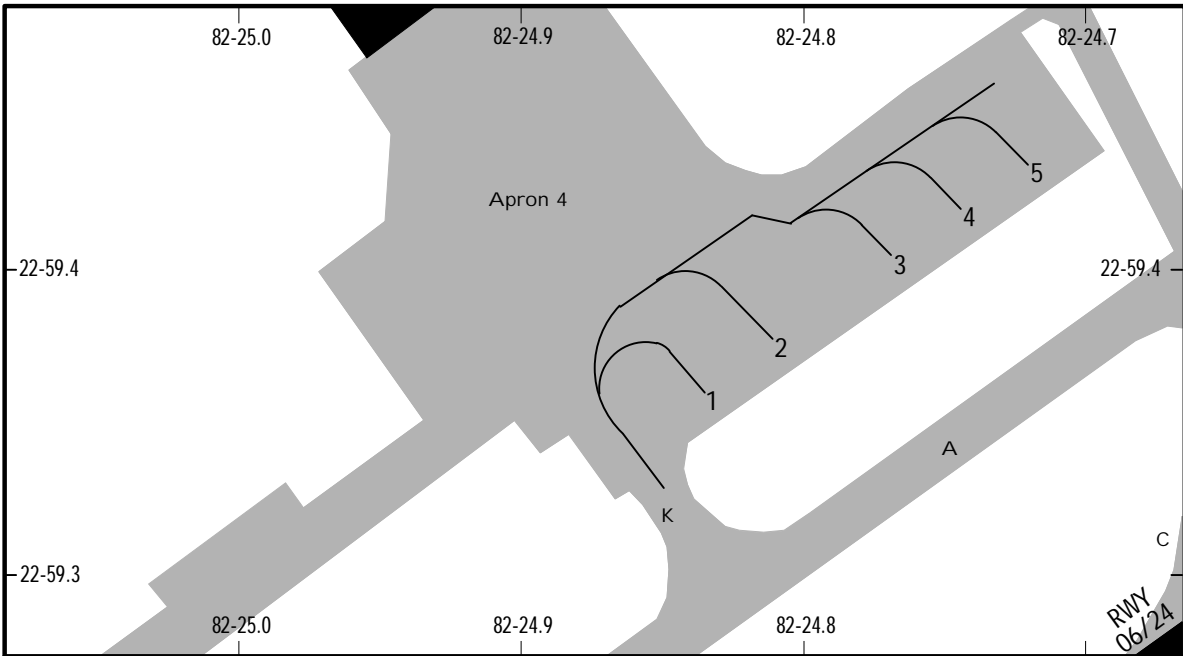
MUHA/HAV



HAVANA, CUBA

23 MAY 14 (10-9B)

JOSE MARTI INTL



PARKING STAND COORDINATES

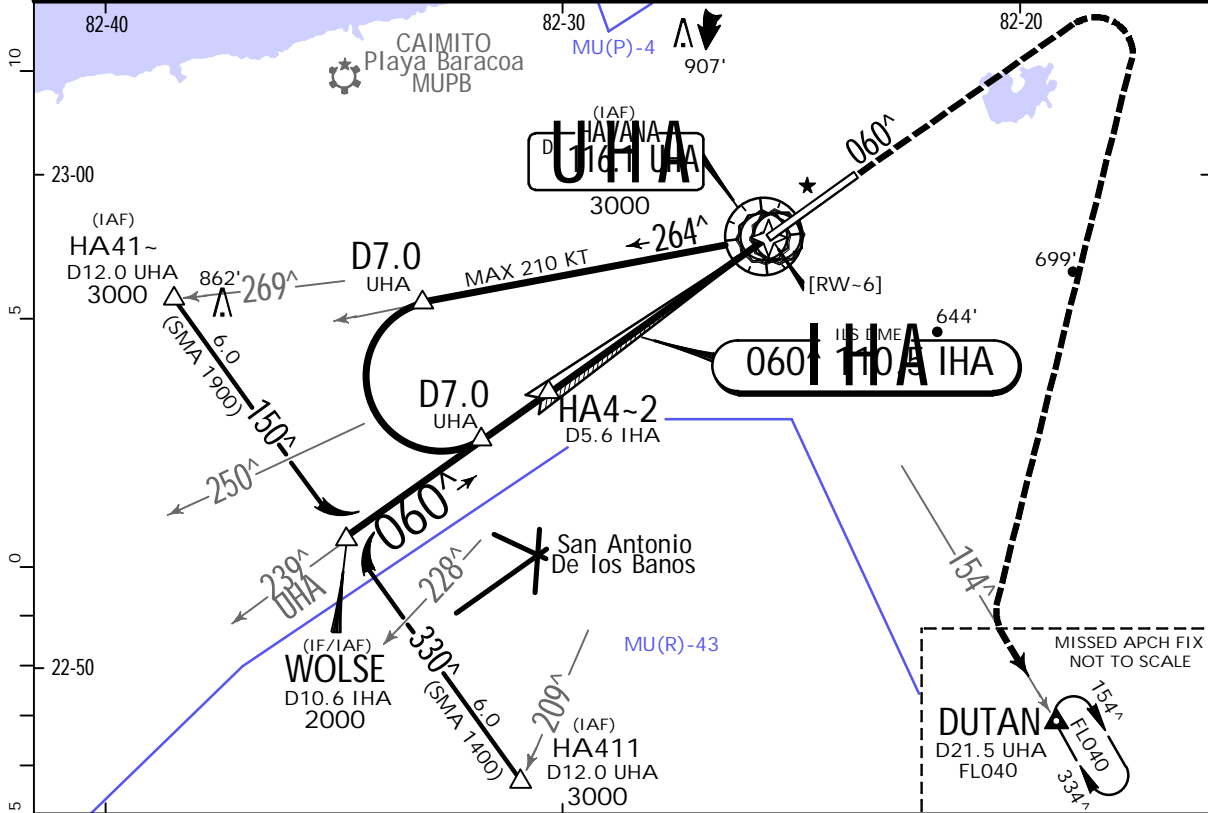
STAND No.	COORDINATES
1 thru 3 4, 5	Apron 4 N22 59.4 W082 24.8 N22 59.4 W082 24.7

MUHA/HAV
JOSE MARTI INTL

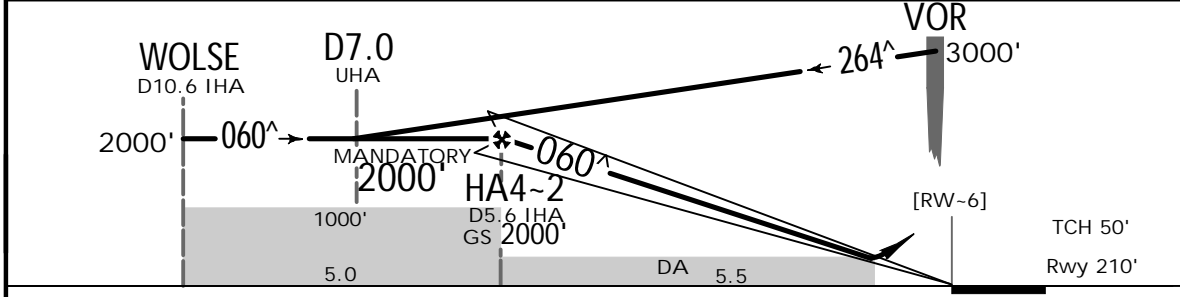


HAVANA, CUBA
ILS Rwy 06

ATIS 132.5		HAVANA Approach (R) 120.3		MARTI Tower 118.1		Ground 121.9	
LOC IHA 110.5	Final Apch Crs 060 [^]	HA4-2 MANDATORY 2000' (1790')		ILS DA(H) 420' (210')	Apt Elev 210' Rwy 210'		<p>MSA UHA VOR 1 1900 within 15 NM</p>
<p>MISSED APCH: Climb on track 060[^] until 2000', turn RIGHT and intercept outbound UHA VOR R-154 and continue to DUTAN holding pattern to FLO40 and expect ATC instructions.</p>							
<p>Alt Set: hPa Rwy Elev: 8 hPa Trans level: By ATC Trans alt: 3000'</p>							
<p>1. DME required. 2. CAUTION: The foreign crews landing on Rwy 06 will keep in mind the vicinity and alignment of the military aerodrome Rwy 05 San Antonio de los Banos, and should apply the authorized IFR procedure for Rwy 06 of La Havana/Jose Marti even in VMC. 3. The maximum indicated airspeed allowed within 25 NM from UHA VOR and at FL 100 or below, is 250 KT, unless ATC clears otherwise.</p>							



IHA DME	5.0	4.0	3.0	2.0	1.0
ALTITUDE	1820'	1500'	1180'	860'	550'



Gnd speed-Kts	70	90	100	120	140	160		2000' on 060 [^] RT	UHA 116.1 R-154
GS	3.00 [^]	372	478	531	637	743			
FAP to THR	5.5	4:43	3:40	3:18	2:45	2:21	2:04		

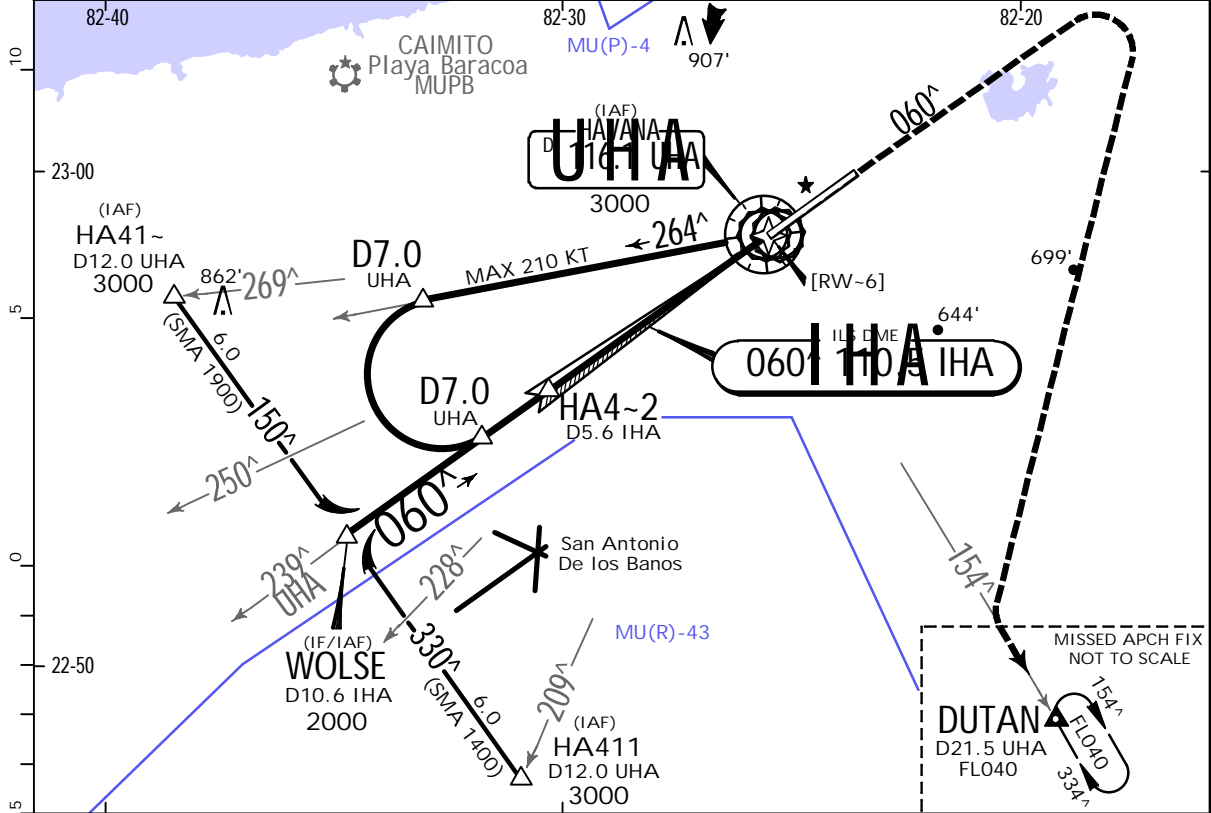
PANS OPS	STRAIGHT-IN LANDING		CIRCLE-TO-LAND	
	FULL		ALS out	
	DA(H) 420' (210')		MDA(H)	
	V0.8 km		V1.2 km	
A			Max Kts	
B			100	1000' (790') V4.3 km
C			135	1100' (890') V4.9 km
D			180	1300' (1090') V6.1 km
			205	

MUHA/HAV
JOSE MARTI INTL

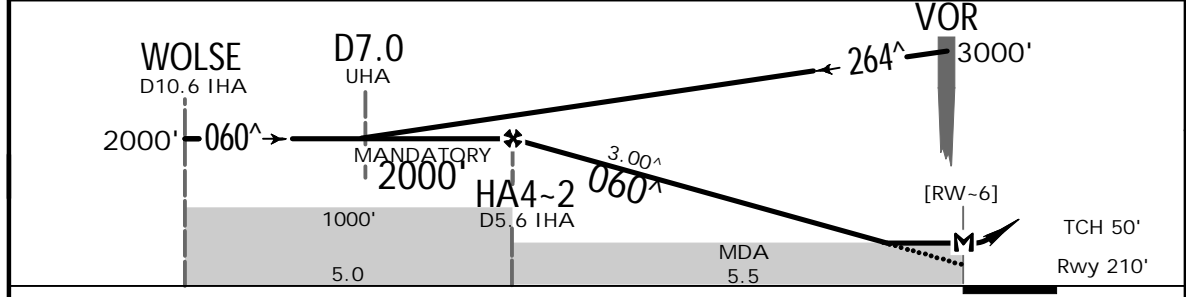
JEPPESSEN
29 APR 22 **11-2**

HAVANA, CUBA
LOC Rwy 06

ATIS 132.5		HAVANA Approach (R) 120.3		MARTI Tower 118.1	Ground 121.9
LOC IHA 110.5	Final Apch Crs 060 [^]	HA4-2 MANDATORY 2000' (1790')	MDA(H) 580' (370')	Apt Elev 210' Rwy 210'	<p>MSA UHA VOR 1 1900 within 15 NM</p>
<p>MISSED APCH: Climb on track 060[^] until 2000', turn RIGHT and intercept outbound UHA VOR R-154 and continue to DUTAN holding pattern to FL040 and expect ATC instructions.</p>					
<p>Alt Set: hPa Rwy Elev: 8 hPa Trans level: By ATC Trans alt: 3000'</p>					
<p>1. DME required. 2. CAUTION: The foreign crews landing on Rwy 06 will keep in mind the vicinity and alignment of the military aerodrome Rwy 05 San Antonio de los Banos, and should apply the authorized IFR procedure for Rwy 06 of La Havana/Jose Marti even in VMC. 3. The maximum indicated airspeed allowed within 25 NM from UHA VOR and at FL 100 or below, is 250 KT, unless ATC clears otherwise.</p>					



IHA DME	5.0	4.0	3.0	2.0
ALTITUDE	1820'	1500'	1180'	860'



Gnd speed-Kts	70	90	100	120	140	160		2000' on 060 [^] RT	UHA 116.1 R-154	
Descent Angle	3.00 [^]	372	478	531	637	743				849
MAP at RW-6 or FAF to MAP	5.5	4:43	3:40	3:18	2:45	2:21				2:04

.State.	STRAIGHT-IN LANDING		CIRCLE-TO-LAND	
	MDA(H) 580' (370')		ALS out	

PANS OPS	A	V1.3 km	V1.7 km	Max Kts	MDA(H)	
	B			100'	1000' (790')	V4.3 km
	C			135'	1100' (890')	V4.9 km
	D			180'	1300' (1090')	V6.1 km

MUHA/HAV

JOSE MARTI INTL

JEPPESSEN
29 APR 22 (12-1)

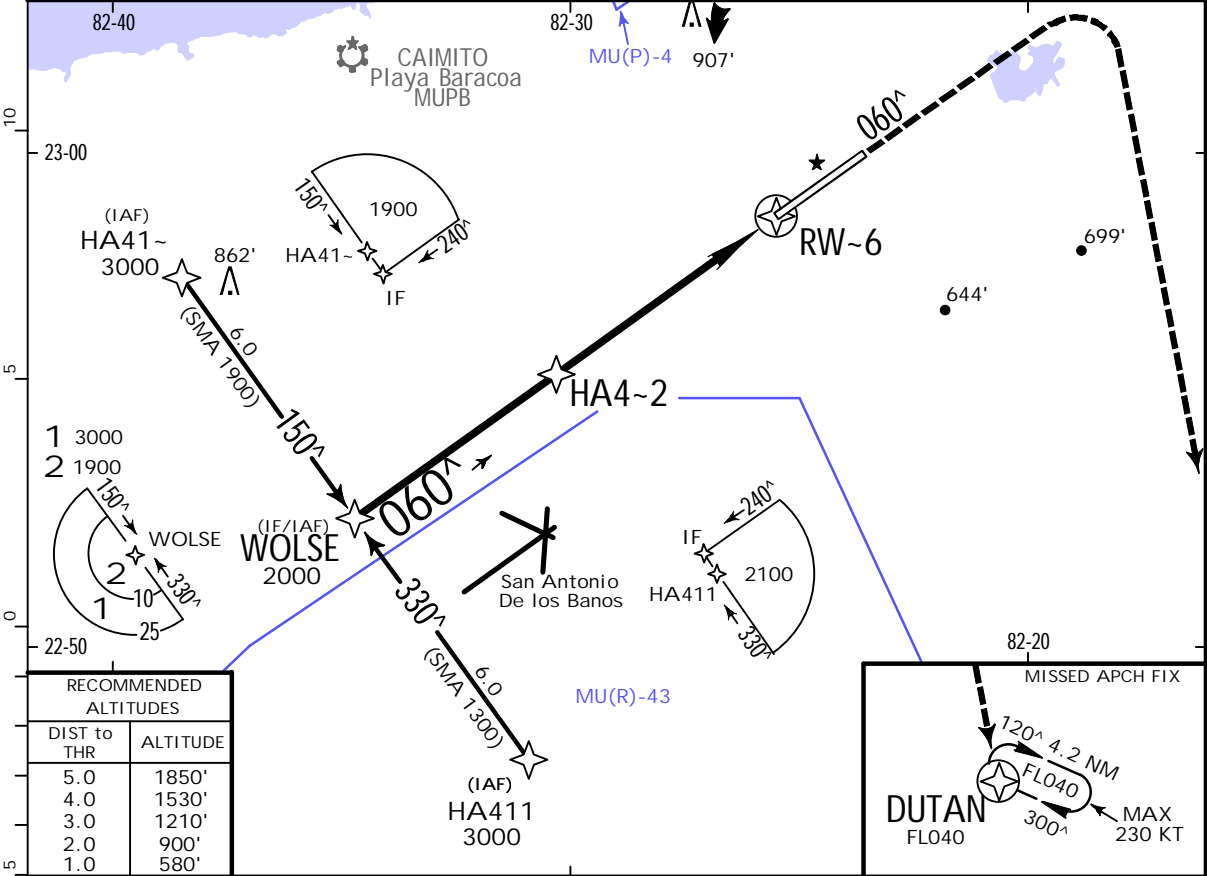
HAVANA, CUBA

RNP Rwy 06

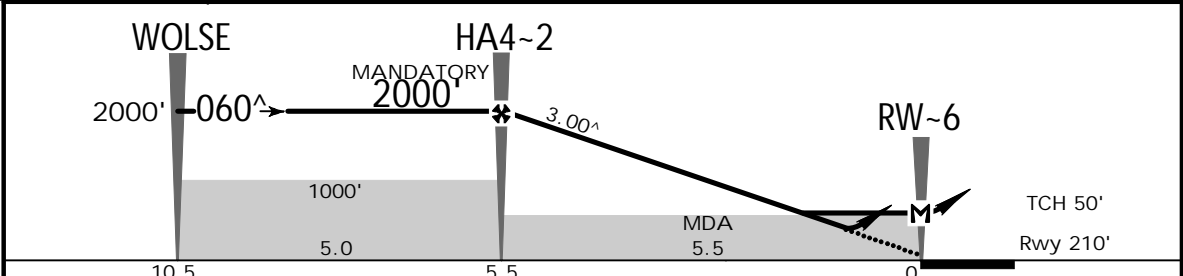
ATIS 132.5		HAVANA Approach (R) 120.3		MARTI Tower 118.1		Ground 121.9	
RNAV	Final Apch Crs 060 [^]	HA4-2 MANDATORY 2000' (1790')		LNAV/VNAV DA(H) 460' (250')		Apt Elev 210' Rwy 210'	
MISSED APCH: Climb on track 060 [^] until 2000', turn RIGHT direct to DUTAN holding pattern at FLO40 and expect ATC instructions.							TAA 25 NM IF/IAF

RNP Apch | Alt Set: hPa | Rwy Elev: 8 hPa | Trans level: By ATC | Trans alt: 3000'

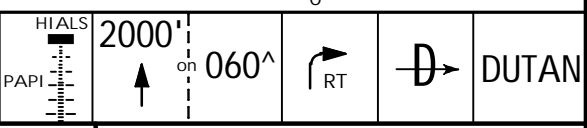
- For loss of RNAV capability: Climb on track 060[^] until 3000', and request ATC instructions.
- CAUTION: The foreign crews landing on Rwy 06 will keep in mind the vicinity and alignment of the military aerodrome Rwy 05 San Antonio de los Banos, and should apply the authorized IFR procedure for the Rwy 06 of La Havana/Jose Marti, even in VMC.
- The maximum indicated airspeed allowed within 25 NM from UHA VOR and at FL 100 or below, is 250 KT, unless ATC clears otherwise.



RECOMMENDED ALTITUDES	
DIST to THR	ALTITUDE
5.0	1850'
4.0	1530'
3.0	1210'
2.0	900'
1.0	580'



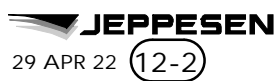
Gnd speed-Kts	70	90	100	120	140	160
Descent Angle	3.00 [^]	372	478	531	637	743
MAP at RW-6	5.5	4:43	3:40	3:18	2:45	2:21
HA4-2 to MAP	5.5	4:43	3:40	3:18	2:45	2:21



PANS OPS	STRAIGHT-IN LANDING				CIRCLE-TO-LAND	
	LNAV/VNAV DA(H) 460' (250')	ALS out	MANDATORY 2000'	LNAV MDA(H) 580' (370')	ALS out	Max Kts / MDA(H)
A						100
B	VO.8 km	V1.3 km	V1.3 km	V1.7 km		135 / 1000' (790') V4.3 km
C						180 / 1100' (890') V4.9 km
D						205 / 1300' (1090') V6.1 km

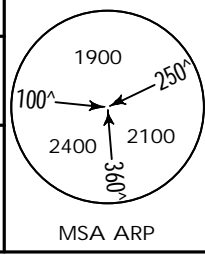
CHANGES: New AOM concept.

MUHA/HAV
JOSE MARTI INTL



HAVANA, CUBA
RNP Rwy 24

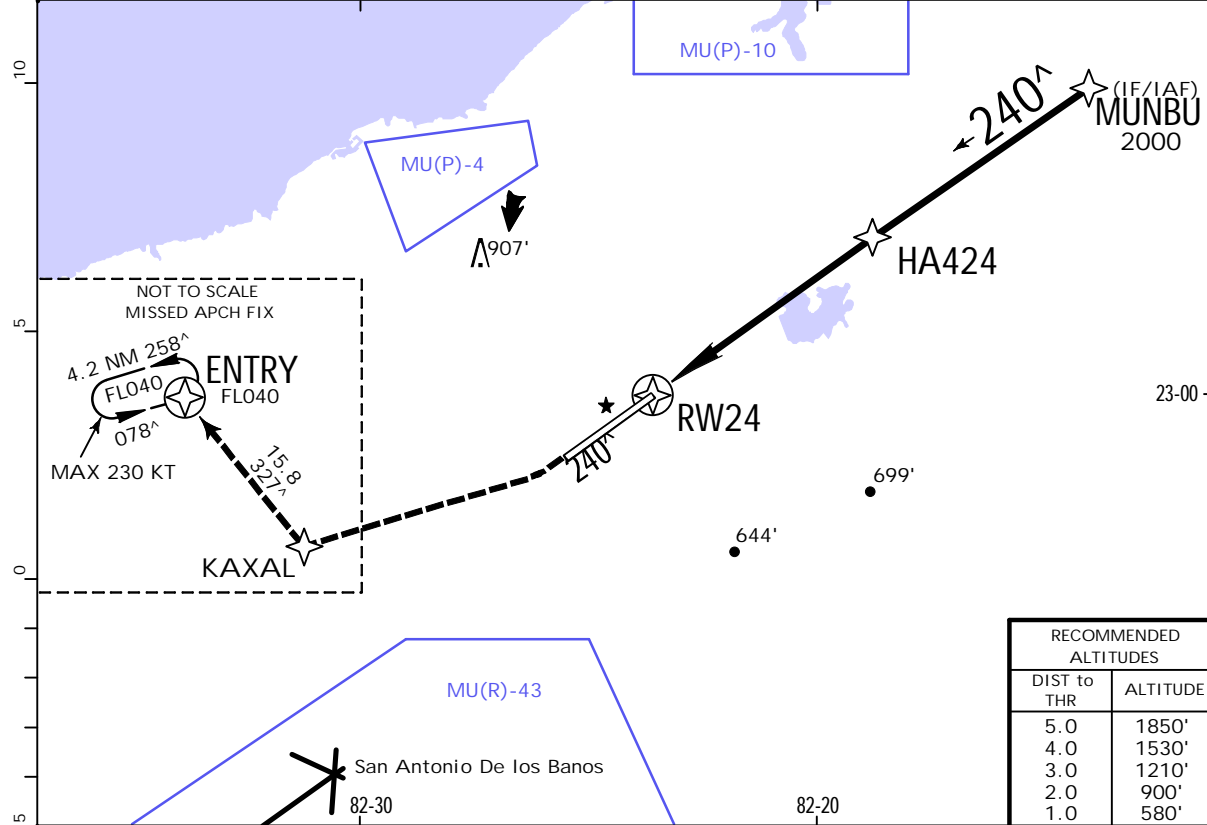
ATIS 132.5	HAVANA Approach (R) 120.3	MARTI Tower 118.1	Ground 121.9
RNAV	Final Apch Crs 240 [^]	HA424 MANDATORY 2000' (1790')	LNAV/VNAV DA(H) 480' (270')
			Apt Elev 210' Rwy 210'



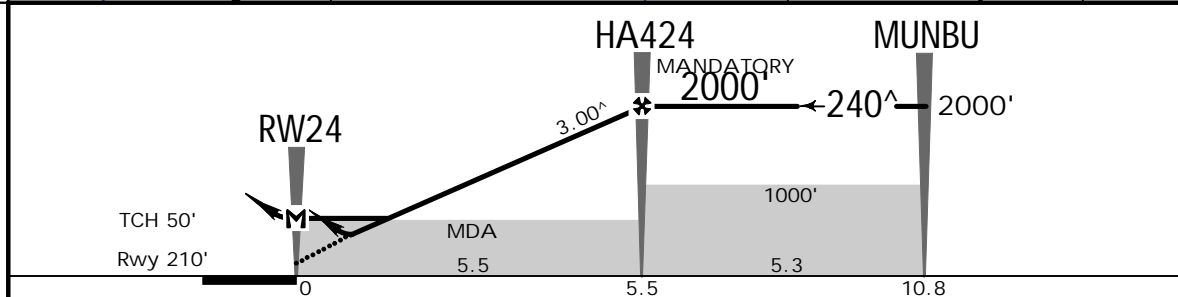
BRIEFING STRIP™

MISSED APCH: Climb on track 240[^] until 1000', turn RIGHT to KAXAL, continue on track 327[^] to ENTRY holding pattern at FLO40 and expect ATC instructions.

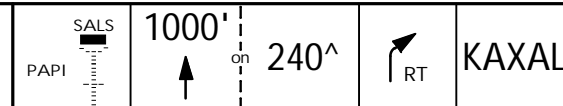
- RNP Apch | Alt Set: hPa | Rwy Elev: 8 hPa | Trans level: By ATC | Trans alt: 3000'
- For loss of RNAV capability: Climb on track 240[^] until 3000', and request ATC instructions.
 - The maximum indicated airspeed allowed within 25 NM from UHA VOR and at FL 100 or below, is 250 KT, unless ATC clears otherwise.



RECOMMENDED ALTITUDES	
DIST to THR	ALTITUDE
5.0	1850'
4.0	1530'
3.0	1210'
2.0	900'
1.0	580'



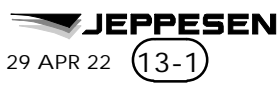
Gnd speed-Kts	70	90	100	120	140	160
Descent Angle 3.00 [^]	372	478	531	637	743	849
MAP at RW24						
HA424 to MAP	5.5	4:43	3:40	3:18	2:45	2:21



PANS OPS	STRAIGHT-IN LANDING				Max Kts	CIRCLE-TO-LAND	
	LNAV/VNAV DA(H)	ALS out	LNAV MDA(H)	ALS out		MDA(H)	
A	480' (270')		640' (430')		100	1000' (790')	V4.3 km
B	V1.1 km	V1.3 km	V1.8 km	V2.0 km	135	1100' (890')	V4.9 km
C					180	1300' (1090')	V6.1 km
D					205		

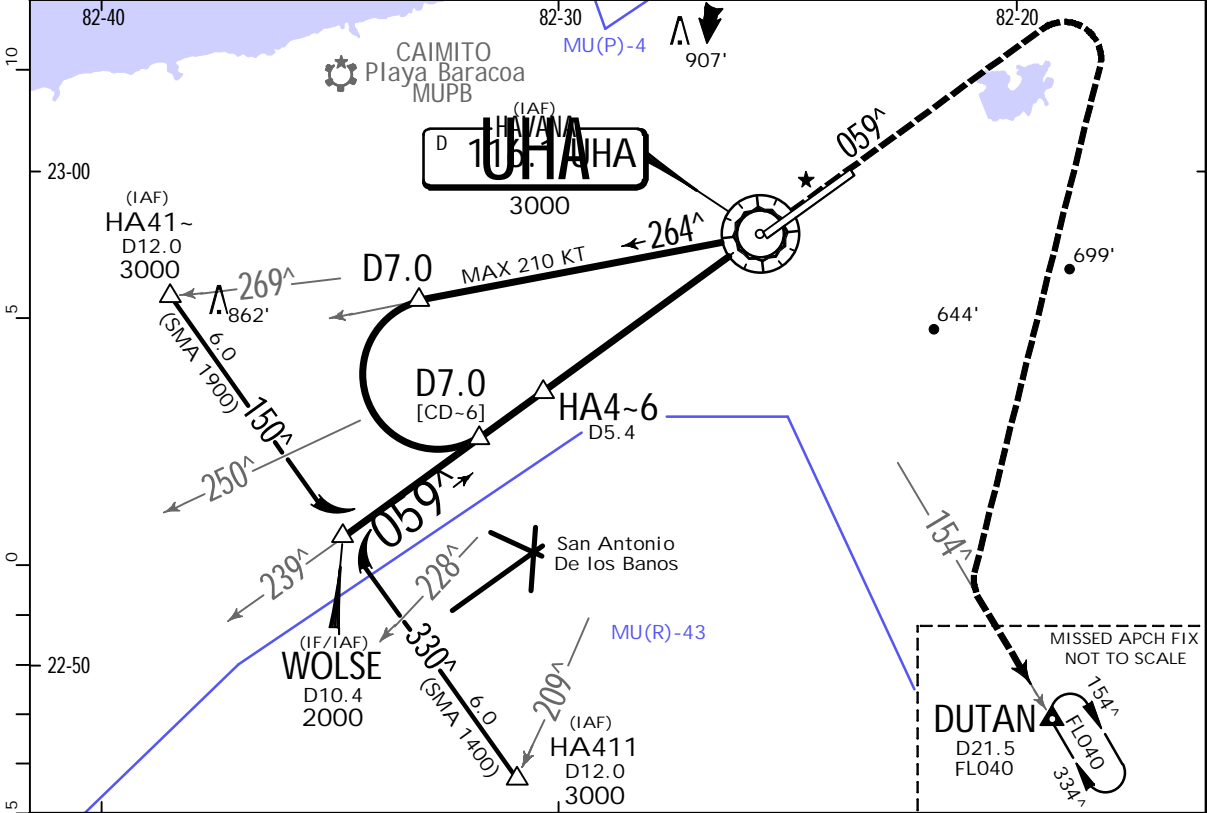
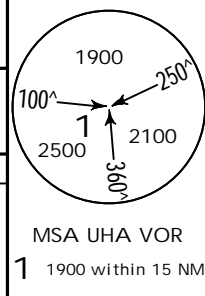
CHANGES: New AOM concept.

MUHA/HAV
JOSE MARTI INTL

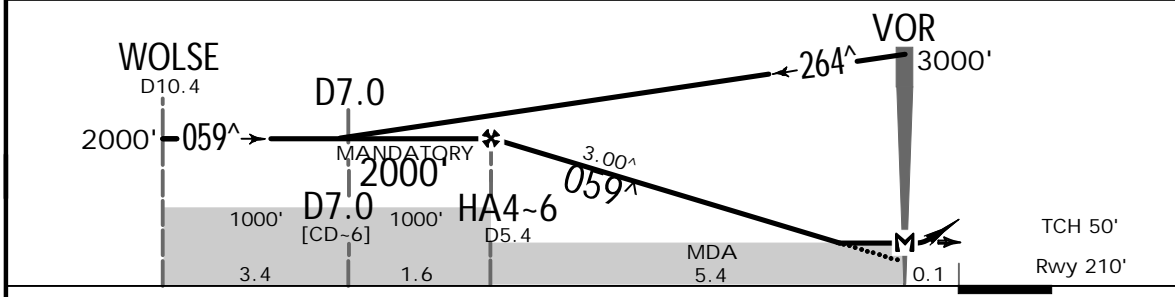


HAVANA, CUBA
VOR Rwy 06

ATIS 132.5		HAVANA Approach (R) 120.3		MARTI Tower 118.1	Ground 121.9
VOR UHA 116.1	Final Apch Crs 059 [^]	HA4-6 MANDATORY 2000' (1790')	MDA(H) 580' (370')	Apt Elev 210' Rwy 210'	
<p>MISSED APCH: Climb on track 059[^] until 2000', turn RIGHT and intercept outbound UHA VOR R-154 and continue to DUTAN holding pattern at FL040 and expect ATC instructions.</p> <p>Alt Set: hPa Rwy Elev: 8 hPa Trans level: By ATC Trans alt: 3000'</p> <p>1. DME required. 2. CAUTION: The foreign crews landing on Rwy 06 will keep in mind the vicinity and alignment of the military aerodrome Rwy 05 San Antonio de los Banos, and should apply the authorized IFR procedure for Rwy 06 of La Havana/Jose Marti even in VMC. 3. The maximum indicated airspeed allowed within 25 NM from UHA VOR and at FL 100 or below, is 250 KT, unless ATC clears otherwise.</p>					



UHA DME	5.0	4.0	3.0	2.0	1.0
ALTITUDE	1880'	1560'	1250'	930'	610'



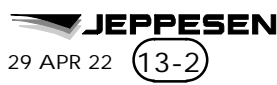
Gnd speed-Kts	70	90	100	120	140	160		2000' ↑ on 059 [^]		UHA 116.1 R-154	
Descent Angle	3.00 [^]	372	478	531	637	743					849
MAP at VOR or HA4-6 to MAP	5.4	4:38	3:36	3:14	2:42	2:19					2:02

.State.	STRAIGHT-IN LANDING		CIRCLE-TO-LAND	
	MDA(H) 580' (370')		TCH 50'	
ALS out		Max Kts		MDA(H)

PANS OPS	A	V1.3 km	V1.7 km	100	1000' (790')	V4.3 km		
	B			135				
	C			180			1100' (890')	V4.9 km
	D			205			1300' (1090')	V6.1 km

MUHA/HAV

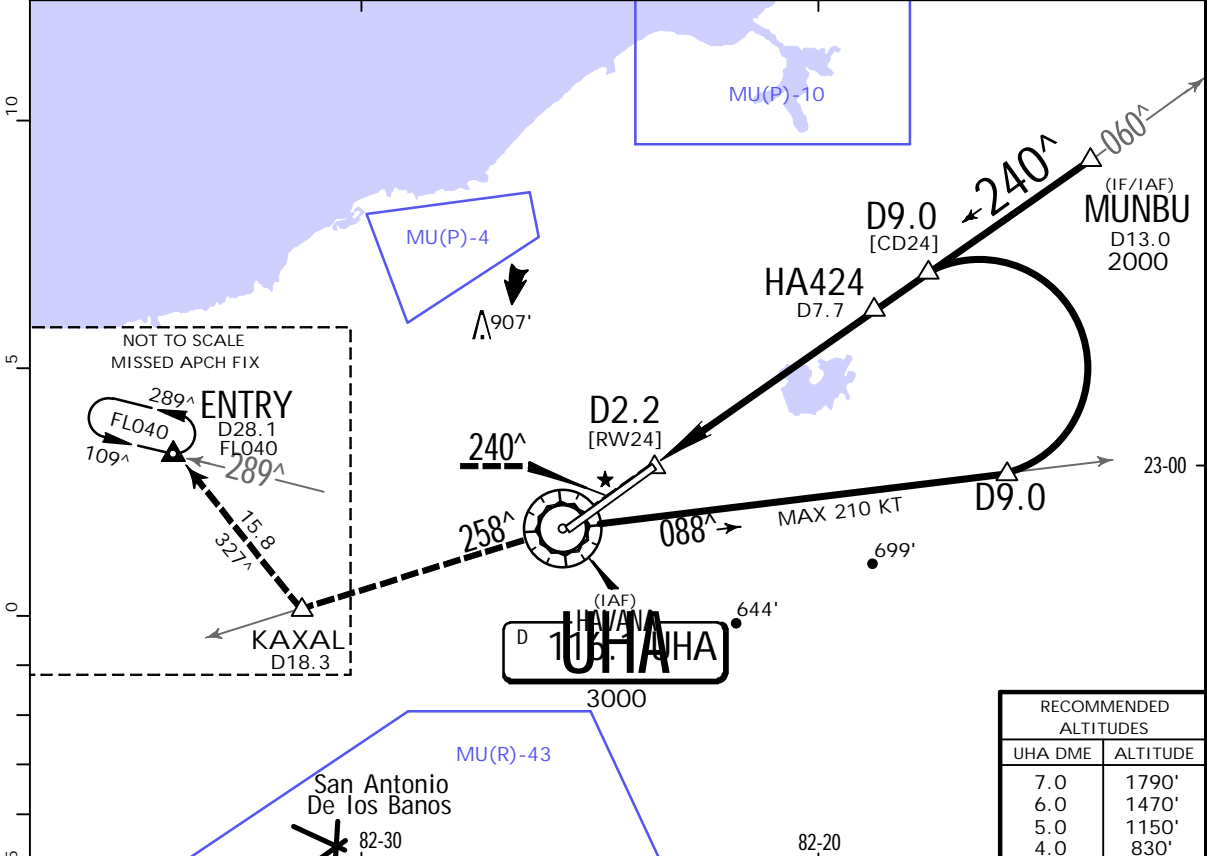
JOSE MARTI INTL



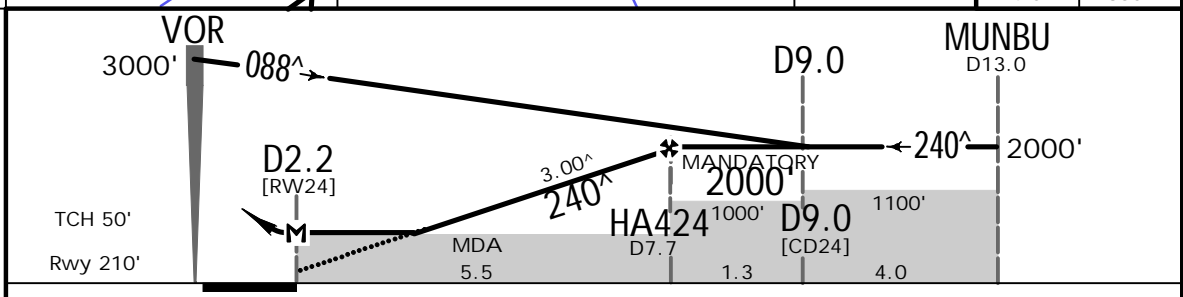
HAVANA, CUBA

VOR Rwy 24

ATIS 132.5		HAVANA Approach (R) 120.3		MARTI Tower 118.1	Ground 121.9	
VOR UHA 116.1	Final Apch Crs 240 [^]	HA424 MANDATORY 2000' (1790')	MDA(H) 640' (430')	Apt Elev 210' Rwy 210'		
MISSED APCH: Climb on track 240 [^] until 1000', intercept outbound UHA VOR R-258 to KAXAL, continue on track 327 [^] to ENTRY holding pattern at FLO40 and expect ATC instructions.						
Alt Set: hPa				Rwy Elev: 8 hPa		Trans level: By ATC
1. DME required. 2. The maximum indicated airspeed allowed within 25 NM from UHA VOR and at FL 100 or below, is 250 KT, unless ATC clears otherwise.					MSA UHA VOR 1 1900 within 15 NM	



RECOMMENDED ALTITUDES	
UHA DME	ALTITUDE
7.0	1790'
6.0	1470'
5.0	1150'
4.0	830'



Gnd speed-Kts	70	90	100	120	140	160	SALS 	1000' on 240 [^]	UHA 116.1 R-258	KAXAL
Descent Angle 3.00 [^]	372	478	531	637	743	849				
MAP at D2.2 or HA424 to MAP	5.5	4:43	3:40	3:18	2:45	2:21				

PANS OPS	.State.		STRAIGHT-IN LANDING		CIRCLE-TO-LAND	
	MDA(H) 640' (430')				Max Kts	
	ALS out				100	1000' (790') V4.3 km
	V1.8 km		V2.0 km		135	1100' (890') V4.9 km
					180	1300' (1090') V6.1 km
				205		

Chart changes since cycle 06-2023

ADD = added chart, REV = revised chart, DEL = deleted chart.

ACT PROCEDURE IDENT

INDEX

REV DATE

EFF DATE

HAVANA, (JOSE MARTI INTL - MUHA)

TERMINAL CHART CHANGE NOTICES

Chart Change Notices for Airport MUHA

Type: Terminal

Effectivity: Temporary

Begin Date: Immediately

End Date: 20231202

Fuel AVGAS not available.