

List of pages in this Trip Kit

Trip Kit Index

Airport Information For HECA

Terminal Charts For HECA

Revision Letter For Cycle 07-2023

Change Notices

Notebook

General Information

Location: CAIRO EGY
ICAO/IATA: HECA / CAI
Lat/Long: N30° 06.68', E031° 24.83'
Elevation: 467 ft

Airport Use: Public
Daylight Savings: Not Observed
UTC Conversion: -2:00 = UTC
Magnetic Variation: 5.0° E

Fuel Types: Jet A-1
Repair Types: Major Airframe, Major Engine
Customs: Yes
Airport Type: IFR
Landing Fee: Yes
Control Tower: Yes
Jet Start Unit: No
LLWS Alert: No
Beacon: Yes

Sunrise: 0327 Z
Sunset: 1622 Z

Runway Information

Runway: 05C
Length x Width: 13120 ft x 197 ft
Surface Type: asphalt
TDZ-Elev: 382 ft
Lighting: Edge, ALS, Centerline, TDZ

Runway: 05L
Length x Width: 10830 ft x 197 ft
Surface Type: asphalt
TDZ-Elev: 190 ft
Lighting: Edge, ALS, Centerline

Runway: 05R
Length x Width: 13123 ft x 197 ft
Surface Type: asphalt
TDZ-Elev: 448 ft
Lighting: Edge, ALS, Centerline, TDZ

Runway: 23C
Length x Width: 13120 ft x 197 ft
Surface Type: asphalt
TDZ-Elev: 375 ft
Lighting: Edge, ALS, Centerline, TDZ

Runway: 23L
Length x Width: 13123 ft x 197 ft
Surface Type: asphalt
TDZ-Elev: 467 ft
Lighting: Edge, ALS, Centerline, TDZ

Runway: 23R
Length x Width: 10830 ft x 197 ft
Surface Type: asphalt
TDZ-Elev: 199 ft
Lighting: Edge, ALS, Centerline

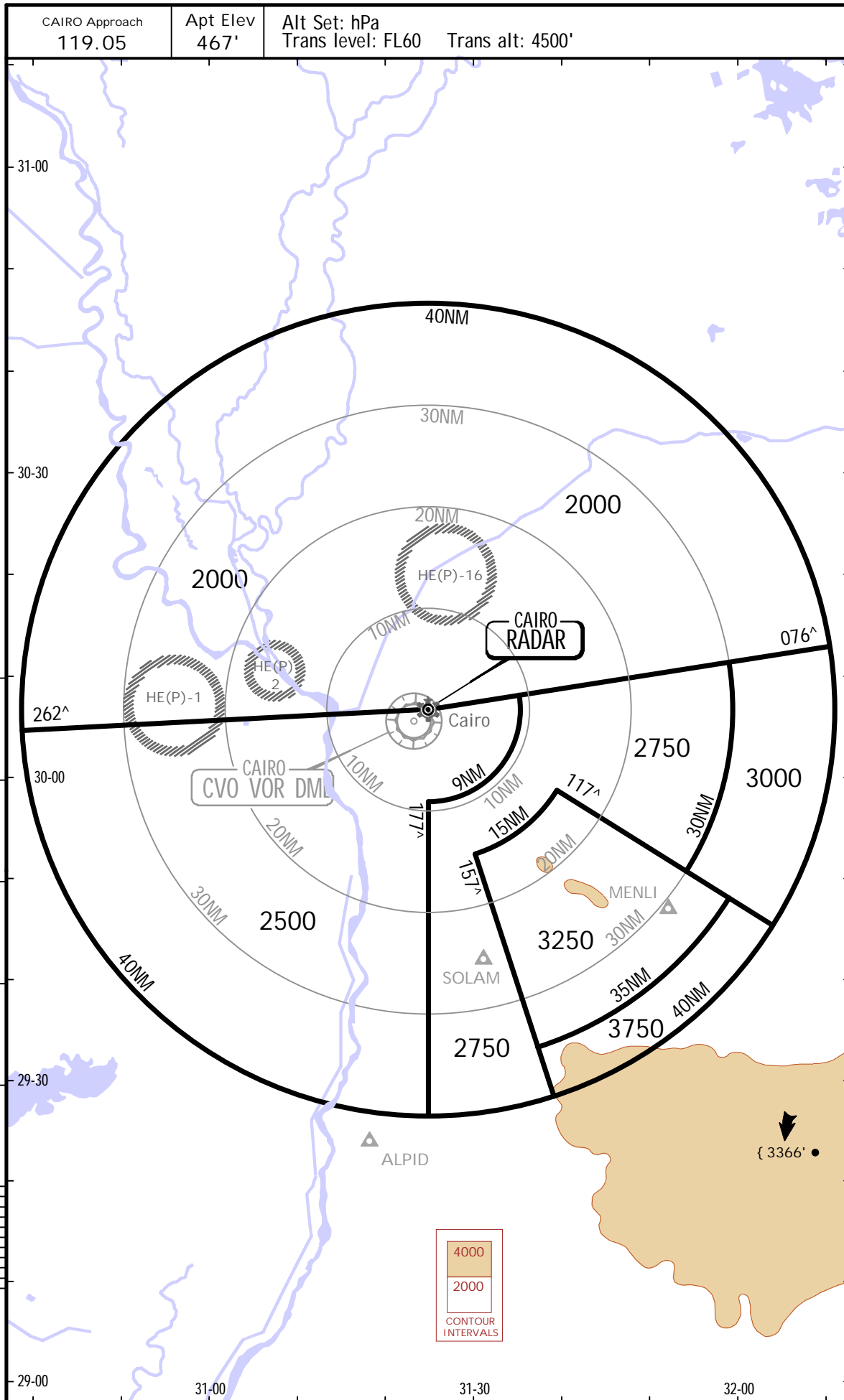
Communication Information

ATIS: 122.600
Cairo Tower: 118.100
Cairo Tower: 125.875 Secondary
Cairo Ground: 120.400
Cairo Ground: 121.900
Cairo Ground: 126.375 Secondary
Cairo Preflight Clearance Delivery: 120.100
Cairo Preflight Clearance Delivery: 127.600 Secondary
Cairo Approach: 120.700 Secondary
Cairo Approach: 119.975 Secondary
Cairo Approach: 119.550 Secondary
Cairo Approach: 119.050
Cairo Approach: 124.375 Secondary
Cairo Direct (Approach Control Radar): 119.050
Cairo Direct (Approach Control Radar): 119.550 Secondary
Cairo Direct (Approach Control Radar): 119.975 Secondary
Cairo Direct (Approach Control Radar): 120.700 Secondary
Cairo Direct (Approach Control Radar): 124.375 Secondary

HECA/CAI
CAIRO INTL

JEPPESEN
5 JUL 13 (10-1R)

CAIRO, EGYPT
.RADAR.MINIMUM.ALTITUDES.



HECA/CAI
CAIRO INTL

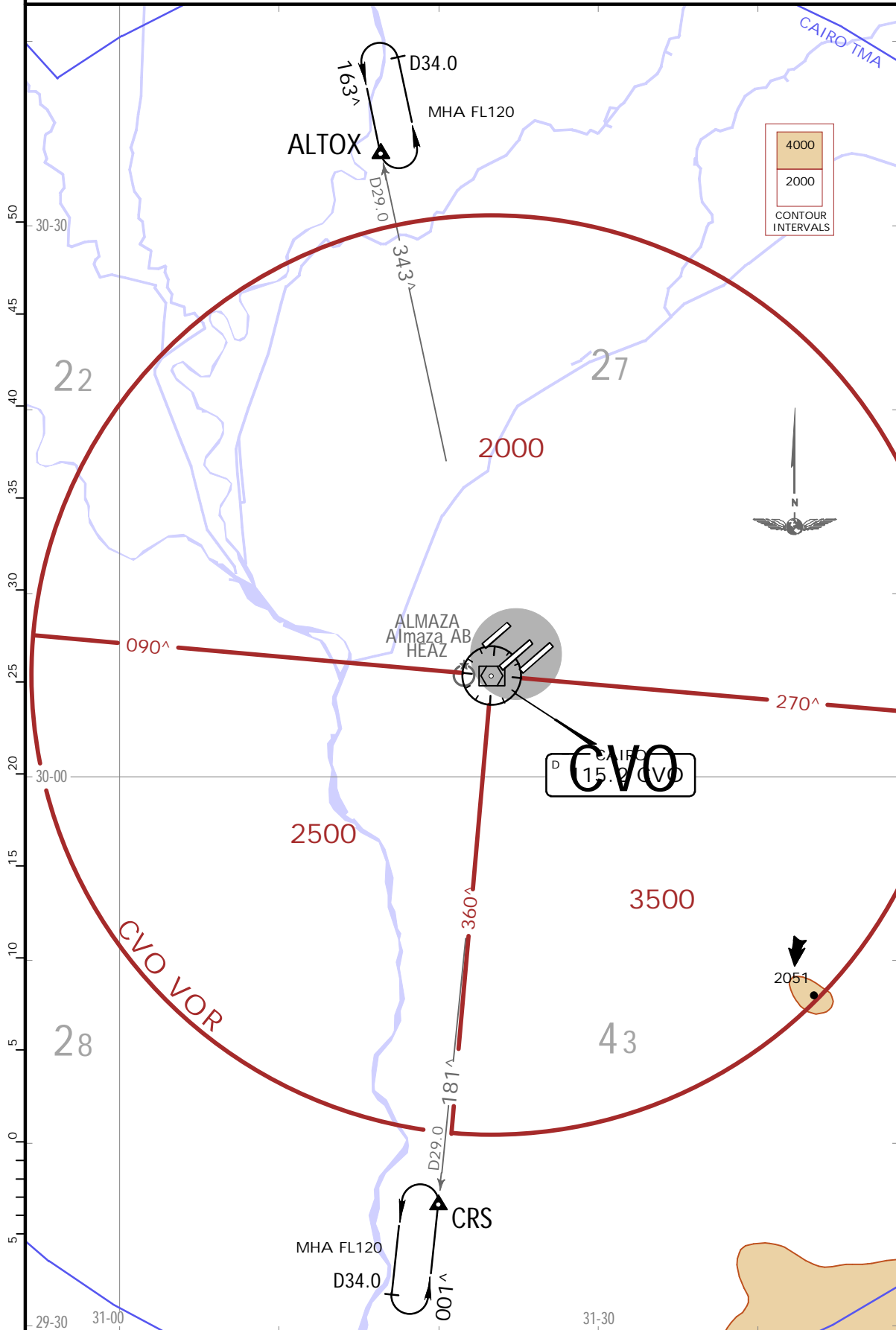
JEPPESEN

CAIRO, EGYPT

25 FEB 22 10-2

CAIRO OUTER FIXES HOLDING PROCEDURES

Vectors to ALTOX and CRS will be provided by ATC, when excessive holdings are expected.
In case of CVO inoperative, use ALTOX and CRS as RNAV holdings.



HECA/CAI
CAIRO INTL

 JEPPESEN
6 SEP 19 10-4 .Eff.12.Sep.

CAIRO, EGYPT
.NOISE.

NOISE ABATEMENT

GENERAL

Flights within Cairo TMA shall not be flown below FL90 outside a circle of 25NM centered on CVO VOR DME.

The following noise abatement procedures shall apply for FAN JET ACFT.

RUNWAY USAGE

RWY 05L will be used for departures only.

RWY 23R will be used for arrivals and departures.

RWYs 05C/23C will be used for arrivals and departures.

RWYs 05R/23L will be used for arrivals and departures.

ARRIVALS

LOW-POWER/LOW-DRAG APPROACH

ACFT should maintain 250 KT IAS + 10 KT below FL100. Speed should be reduced continuously so as to reach 170 KT IAS + 10 KT IAS shortly prior to 5NM from RWY THR, except when ceiling is below 500' and/or ground visibility is less than 2km. Pilots unable to comply should advise ATC.

DEPARTURES

NADP 1 shall be applied for all take-offs in accordance with ICAO

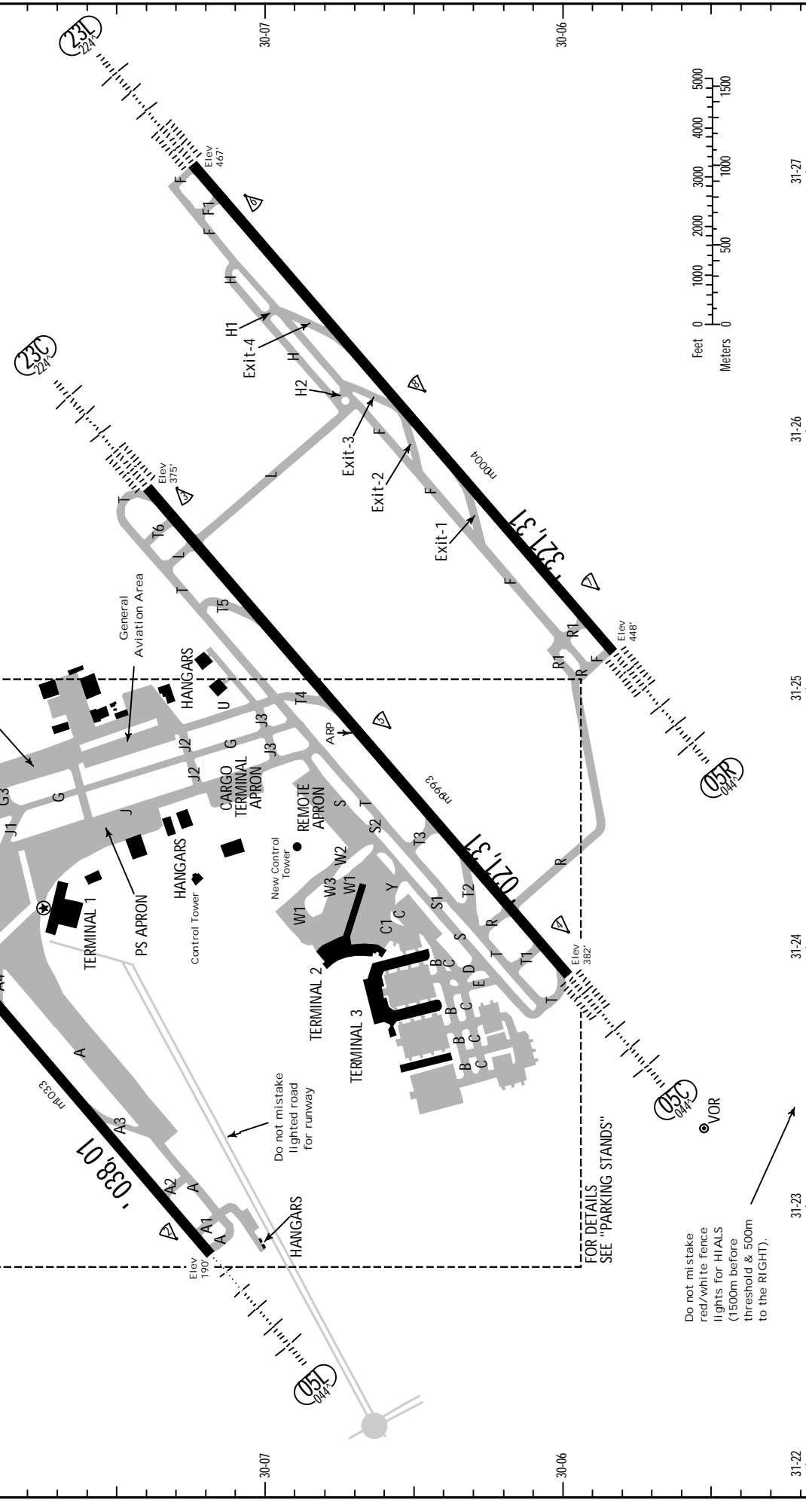
DOC 8168 VOL 1, appendix to chapter 3.

REVERSE THRUST

Idle reverse thrust is recommended during landing.

RUN-UP TESTS

Run-ups will be done on RWY before take-off.



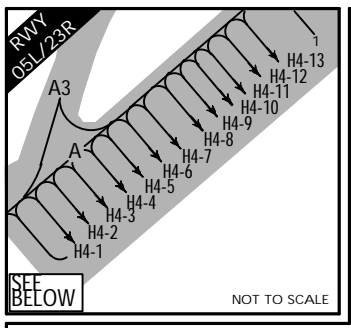
Rwys 05C, 05R, 23L and 23C approved for CAT II operations, special aircrew and aircraft certification required.

Rwy closed for scheduled maintenance:
Rwy 05C/23C: TUE 0900-1100
Rwy 05L/23R: WED 1000-1200
Rwy 05R/23L: MON 0900-1100.

FOR DETAILS SEE "PARKING STANDS"

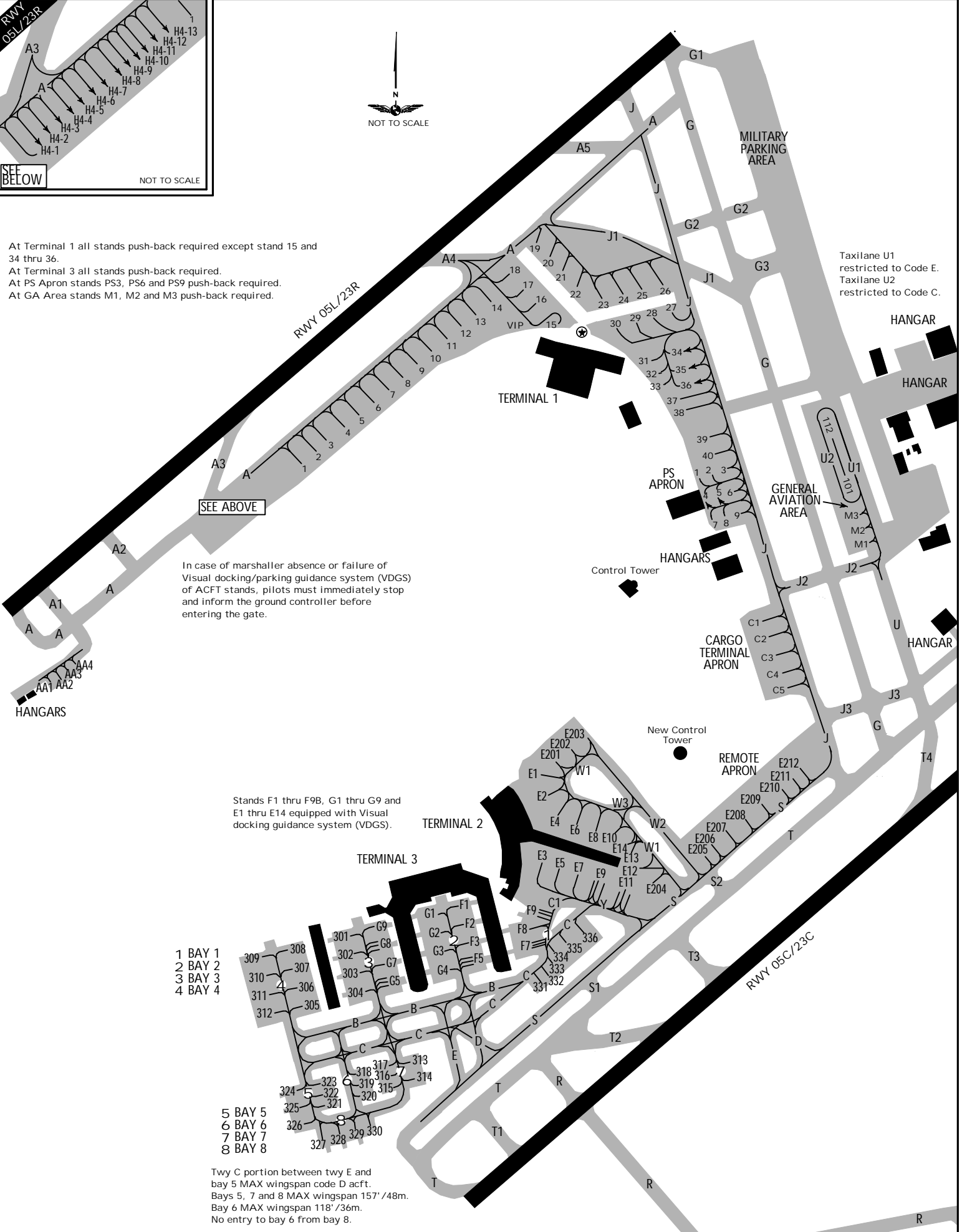
Do not mistake red/white fence lights for HIALS (1500m before threshold & 500m to the RIGHT).





At Terminal 1 all stands push-back required except stand 15 and 34 thru 36.
At Terminal 3 all stands push-back required.
At PS Apron stands PS3, PS6 and PS9 push-back required.
At GA Area stands M1, M2 and M3 push-back required.

Taxilane U1 restricted to Code E.
Taxilane U2 restricted to Code C.



In case of marshaller absence or failure of Visual docking/parking guidance system (VDGS) of ACFT stands, pilots must immediately stop and inform the ground controller before entering the gate.

- 1 BAY 1
- 2 BAY 2
- 3 BAY 3
- 4 BAY 4

- 5 BAY 5
- 6 BAY 6
- 7 BAY 7
- 8 BAY 8

CHANGES: None

HECA/CAI

16 SEP 22

JEPPESSEN
10-9/A

CAIRO, EGYPT
CAIRO INTL

JEPPESSEN, 2022. ALL RIGHTS RESERVED.

HECA/CAI

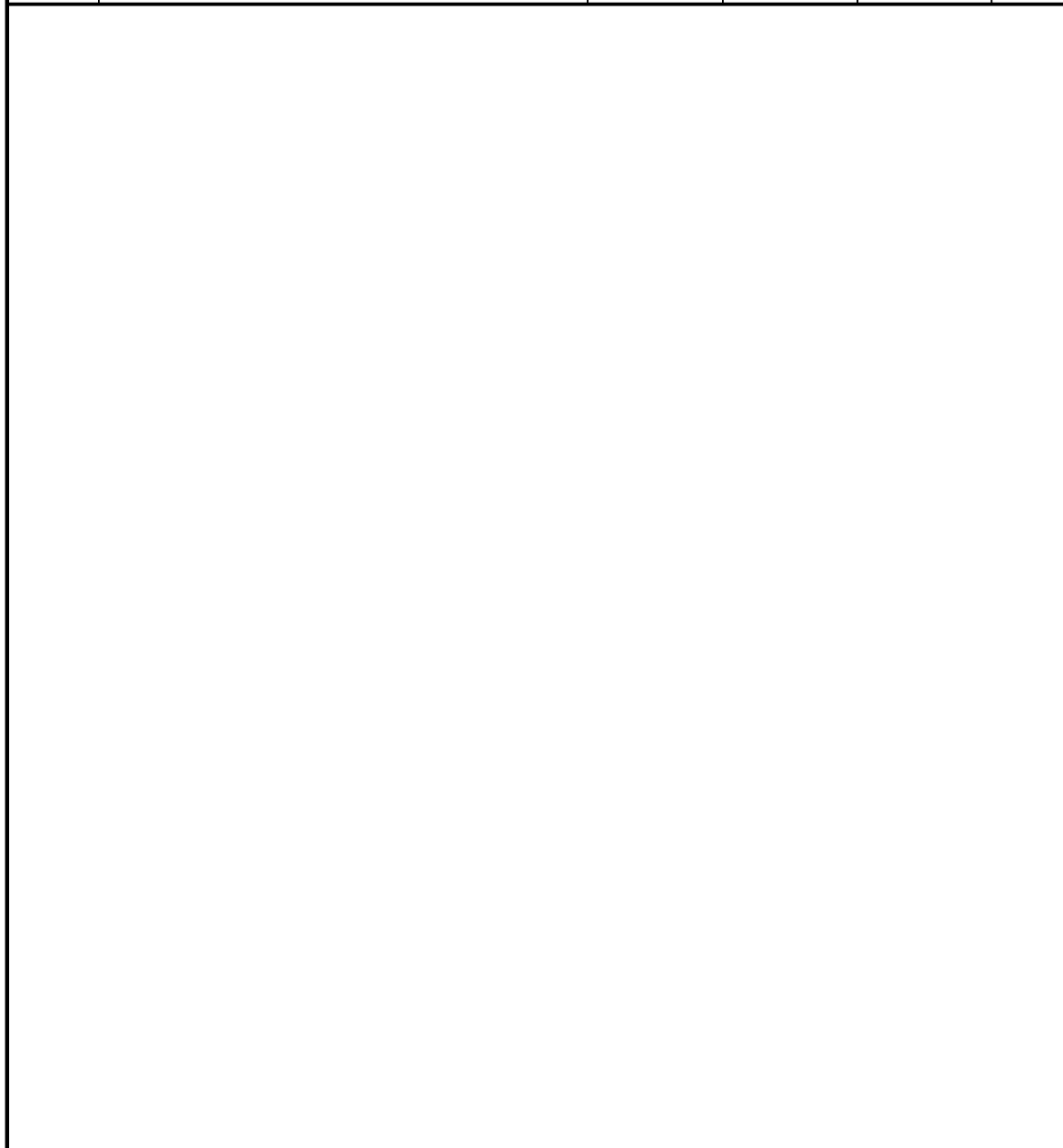


CAIRO, EGYPT

21 JAN 22 (10-9B) .Eff.27.Jan.

CAIRO INTL

RWY		USABLE LENGTHS		TAKE-OFF	WIDTH
		Threshold	Glide Slope		
05L 23R	HIRL (60m) CL(30m) HIALS PAPI(3.0^)	RVR	9554' 2912m		197' 60m
			9615' 2931m		
05C 23C	HIRL (60m) CL(30m) HIALS-II TDZ PAPI(3.0^)	RVR	12,269' 3740m		197' 60m
			12,087' 3684m		
05R 23L	HIRL (60m) CL(30m) HIALS-II TDZ PAPI(3.0^)	RVR	12,029' 3666m		197' 60m
			11,969' 3648m		



.State. TAKE-OFF

R/V200m (R/V150m)

RVR in paranthesis if TDZ RVR is supplemented by Mid and/or Rollout RVR.

HECA/CAI



CAIRO, EGYPT

21 JAN 22 (10-9C) .Eff.27.Jan.

CAIRO INTL

INS COORDINATES							
STAND No.	COORDINATES		ELEV	STAND No.	COORDINATES		ELEV
1	N30 07.5	E031 23.5	208	318	N30 06.3	E031 23.7	379
2, 3	N30 07.5	E031 23.6	208	319	N30 06.2	E031 23.7	380
4	N30 07.6	E031 23.6	207	320	N30 06.2	E031 23.7	381
5 thru 7	N30 07.6	E031 23.7	205	321	N30 06.2	E031 23.6	378
8, 9	N30 07.6	E031 23.7	206	322	N30 06.2	E031 23.6	377
10	N30 07.7	E031 23.8	211	323	N30 06.2	E031 23.6	376
11	N30 07.7	E031 23.9	210	324	N30 06.2	E031 23.5	375
12	N30 07.8	E031 23.9	211	325	N30 06.2	E031 23.5	376
13	N30 07.8	E031 23.9	212	326	N30 06.1	E031 23.5	378
14	N30 07.8	E031 24.0	212	327	N30 06.1	E031 23.6	380
15	N30 07.8	E031 24.1	224	328	N30 06.1	E031 23.6	382
16	N30 07.8	E031 24.1	220	329	N30 06.1	E031 23.6	383
17	N30 07.8	E031 24.0	217	330	N30 06.1	E031 24.1	383
18	N30 07.9	E031 24.0	213	331	N30 06.4	E031 24.1	384
19	N30 07.9	E031 24.1	215	332, 333	N30 06.4	E031 24.1	383
20	N30 07.9	E031 24.1	218	334	N30 06.5	E031 24.1	384
21	N30 07.9	E031 24.1	222	335	N30 06.5	E031 24.1	386
22	N30 07.8	E031 24.1	225	336	N30 06.5	E031 24.2	387
23	N30 07.8	E031 24.2	231	AA1	N30 07.0	E031 22.9	209
24	N30 07.8	E031 24.3	234	AA2	N30 07.0	E031 22.9	211
25	N30 07.8	E031 24.3	236	AA3, AA4	N30 07.1	E031 23.0	210
26	N30 07.8	E031 24.4	239	C1	N30 07.2	E031 24.6	319
27	N30 07.8	E031 24.4	244	C2	N30 07.1	E031 24.6	320
28	N30 07.8	E031 24.3	242	C3	N30 07.1	E031 24.6	322
29	N30 07.8	E031 24.3	239	C4	N30 07.1	E031 24.6	324
30	N30 07.8	E031 24.2	236	C5	N30 07.0	E031 24.6	325
31	N30 07.7	E031 24.3	244	E1	N30 06.8	E031 24.0	330
32	N30 07.7	E031 24.3	247	E2	N30 06.8	E031 24.0	331
33	N30 07.7	E031 24.3	249	E4, E4	N30 06.7	E031 24.1	334
34	N30 07.7	E031 24.4	249	E5, E6	N30 06.7	E031 24.1	336
35	N30 07.7	E031 24.4	251	E7	N30 06.7	E031 24.1	339
36	N30 07.7	E031 24.4	253	E8	N30 06.7	E031 24.2	339
37	N30 07.6	E031 24.4	255	E9, E9R	N30 06.6	E031 24.2	342
38	N30 07.6	E031 24.4	259	E9L	N30 06.6	E031 24.2	341
39	N30 07.5	E031 24.4	267	E10	N30 06.7	E031 24.2	330
40	N30 07.5	E031 24.5	272	E11, E11R	N30 06.6	E031 24.3	345
301	N30 06.5	E031 23.6	375	E11L	N30 06.6	E031 24.2	345
302	N30 06.5	E031 23.6	376	E12, E13	N30 06.7	E031 24.3	344
303, 304	N30 06.4	E031 23.6	376	E14	N30 06.7	E031 24.2	341
305, 306	N30 06.4	E031 23.5	376	E201	N30 06.9	E031 24.1	330
307	N30 06.5	E031 23.5	376	E202, E203	N30 06.9	E031 24.1	329
308	N30 06.5	E031 23.5	375	E204	N30 06.6	E031 24.3	347
309	N30 06.5	E031 23.4	370	E205	N30 06.7	E031 24.4	364
310, 311	N30 06.4	E031 23.4	372	E206	N30 06.7	E031 24.5	364
312	N30 06.4	E031 23.4	371	E207	N30 06.8	E031 24.5	364
313	N30 06.3	E031 23.8	385	E208	N30 06.8	E031 24.5	362
314	N30 06.2	E031 23.8	386	E209	N30 06.8	E031 24.6	358
315	N30 06.2	E031 23.7	383	E210	N30 06.8	E031 24.6	355
316	N30 06.2	E031 23.7	382	E211	N30 06.9	E031 24.6	352
317	N30 06.3	E031 23.7	381	E212	N30 06.9	E031 24.6	350

HECA/CAI



CAIRO, EGYPT

21 JAN 22 (10-9D) .Eff.27.Jan.

CAIRO INTL

INS COORDINATES

STAND No.	COORDINATES	ELEV	STAND No.	COORDINATES	ELEV	
F1	N30 06.6 E031 23.9	375		GENERAL AVIATION APRON		
F2	N30 06.6 E031 23.9	376				
F3	N30 06.5 E031 23.9	376	101		N30 07.4 E031 24.8	299
F5, F5A/B	N30 06.5 E031 23.9	377	102		N30 07.4 E031 24.8	298
F7	N30 06.5 E031 24.0	378	103		N30 07.5 E031 24.8	296
F7A	N30 06.5 E031 24.0	379	104		N30 07.5 E031 24.8	295
F7B, F8	N30 06.5 E031 24.0	378	105		N30 07.5 E031 24.8	293
F9	N30 06.6 E031 24.0	380	106		N30 07.5 E031 24.8	291
F9A	N30 06.6 E031 24.0	381	107		N30 07.5 E031 24.8	290
F9B	N30 06.6 E031 24.0	380	108		N30 07.6 E031 24.7	288
G1	N30 06.6 E031 23.8	375	109	N30 07.6 E031 24.7	286	
G2, G3	N30 06.5 E031 23.8	376	110	N30 07.6 E031 24.7	284	
G4	N30 06.4 E031 23.8	377	111	N30 07.6 E031 24.7	283	
G5	N30 06.4 E031 23.7	376	112	N30 07.6 E031 24.7	281	
G5A	N30 06.4 E031 23.7	377	M1	N30 07.3 E031 24.8	308	
G5B	N30 06.4 E031 23.7	376	M2	N30 07.4 E031 24.8	305	
G7, G8	N30 06.5 E031 23.7	376	M3	N30 07.4 E031 24.8	303	
G8A	N30 06.5 E031 23.7	377				
G8B	N30 06.5 E031 23.7	376				
G9	N30 06.5 E031 23.7	375				
H4-1	N30 07.3 E031 23.3	202				
H4-2, H4-3	N30 07.4 E031 23.3	203				
H4-4	N30 07.4 E031 23.3	204				
H4-5	N30 07.4 E031 23.4	204				
H4-6, H4-7	N30 07.4 E031 23.4	205				
H4-8, H4-9	N30 07.4 E031 23.4	206				
H4-10	N30 07.4 E031 23.4	207				
H4-11	N30 07.4 E031 23.4	207				
H4-12, H4-13	N30 07.5 E031 23.5	207				
VIP	N30 07.8 E031 24.0	212				
	PS APRON					
1	N30 07.5 E031 24.4	275				
2	N30 07.5 E031 24.5	276				
3	N30 07.5 E031 24.5	276				
4	N30 07.4 E031 24.5	278				
5	N30 07.4 E031 24.5	279				
6	N30 07.4 E031 24.5	281				
7	N30 07.4 E031 24.5	283				
8	N30 07.4 E031 24.5	284				
9	N30 07.4 E031 24.5	286				

HECA/CAI



EASA AIR OPS
CAIRO, EGYPT
CAIRO INTL

STRAIGHT-IN RWY		A	B	C	D
05L	ILS	440' (250') 1 R600m	452' (262') 1 R600m	460' (270') 1 R600m	471' (281') 1 R650m
	ALS out	R1300m	R1300m	R1300m	R1400m
	2 LOC	760' (570') R1900m	760' (570') R1900m	760' (570') R1900m	760' (570') R1900m
	ALS out	R2600m	R2600m	R2600m	R2600m
	LOC	760' (570') R2100m	760' (570') R2100m	760' (570') R2300m	760' (570') R2300m
	ALS out	R2800m	R2800m	R3000m	R3000m
	RNP	760' (570') R1900m	760' (570') R1900m	760' (570') R1900m	760' (570') R1900m
	2 LNAV	R1900m	R1900m	R1900m	R1900m
	ALS out	R2600m	R2600m	R2600m	R2600m
	RNP	760' (570') R2100m	760' (570') R2100m	760' (570') R2300m	760' (570') R2300m
	LNAV	R2100m	R2100m	R2300m	R2300m
	ALS out	R2800m	R2800m	R3000m	R3000m
	2 VOR	760' (570') R1900m	760' (570') R1900m	760' (570') R1900m	760' (570') R1900m
	ALS out	R2600m	R2600m	R2600m	R2600m
	VOR	760' (570') R2100m	760' (570') R2100m	760' (570') R2300m	760' (570') R2300m
	ALS out	R2800m	R2800m	R3000m	R3000m
05C	CAT 2 ILS	482' (100') RA104' R300m	491' (109') RA111' R300m	503' (121') RA119' R400m	517' (135') RA129' R400m
	ILS	611' (229') R550m	623' (241') R550m	631' (249') R550m	642' (260') R600m
	FULL	R550m	R550m	R550m	R600m
	TDZ or CL out	1 R550m	1 R550m	1 R550m	1 R600m
	ALS out	R1200m	R1300m	R1300m	R1300m
	2 LOC	710' (328') R800m	710' (328') R800m	710' (328') R800m	710' (328') R800m
	ALS out	R1500m	R1500m	R1500m	R1500m
	LOC	710' (328') R1000m	710' (328') R1000m	710' (328') R1200m	710' (328') R1200m
	ALS out	R1700m	R1700m	R1900m	R1900m
	RNP	710' (328') R1000m	710' (328') R1000m	710' (328') R1000m	710' (328') R1000m
	2 LNAV	R1000m	R1000m	R1000m	R1000m
	ALS out	R1500m	R1500m	R1500m	R1500m
	RNP	710' (328') R1000m	710' (328') R1000m	710' (328') R1200m	710' (328') R1200m
	LNAV	R1000m	R1000m	R1200m	R1200m
	ALS out	R1700m	R1700m	R1900m	R1900m
	2 VOR	710' (328') R1000m	710' (328') R1000m	710' (328') R1000m	710' (328') R1000m
ALS out	R1500m	R1500m	R1500m	R1500m	
VOR	710' (328') R1000m	710' (328') R1000m	710' (328') R1200m	710' (328') R1200m	
ALS out	R1700m	R1700m	R1900m	R1900m	

1 RVR 750m when a Flight Director or Autopilot or HUD to DA is not used.

2 Continuous Descent Final Approach.

HECA/CAI

JEPPESEN
21 JAN 22 **10-9S1** .Eff.27.Jan.

EASA AIR OPS
CAIRO, EGYPT
CAIRO INTL

STRAIGHT-IN RWY		A	B	C	D
05R	CAT 2 ILS	548' (100') RA90' R300m	548' (100') RA90' R300m	560' (112') RA100' R300m	574' (126') RA111' R400m
	ILS	677' (229')	689' (241')	697' (249')	708' (260')
	FULL	R550m	R550m	R550m	R600m
	TDZ or CL out	1 R550m	1 R550m	1 R550m	1 R600m
	ALS out	R1200m	R1300m	R1300m	R1300m
	2 LOC	800' (352') R900m	800' (352') R900m	800' (352') R900m	800' (352') R900m
	ALS out	R1500m	R1500m	R1600m	R1600m
	LOC	800' (352') R1100m	800' (352') R1100m	800' (352') R1300m	800' (352') R1300m
	ALS out	R1800m	R1800m	R2000m	R2000m
	RNP	820' (372')	820' (372')	820' (372')	820' (372')
2 LNAV	R1000m	R1000m	R1000m	R1000m	
ALS out	R1700m	R1700m	R1700m	R1700m	
RNP	820' (372')	820' (372')	820' (372')	820' (372')	
LNAV	R1200m	R1200m	R1400m	R1400m	
ALS out	R1900m	R1900m	R2100m	R2100m	
23L	CAT 2 ILS	567' (100') RA101' R300m	567' (100') RA101' R300m	579' (112') RA115' R300m	593' (126') RA130' R400m
	ILS	697' (230')	709' (242')	717' (250')	728' (261')
	FULL	R550m	R550m	R550m	R600m
	TDZ or CL out	1 R550m	1 R550m	1 R550m	1 R600m
	ALS out	R1200m	R1300m	R1300m	R1300m
	2 LOC	970' (503') R1500m	970' (503') R1500m	970' (503') R1600m	970' (503') R1600m
	ALS out	R1500m	R1500m	R2400m	R2400m
	LOC	970' (503') R1800m	970' (503') R1800m	970' (503') R2000m	970' (503') R2000m
	ALS out	R2600m	R2600m	R2800m	R2800m
	RNP	830' (363')	830' (363')	830' (363')	830' (363')
	2 LNAV	R1000m	R1000m	R1000m	R1000m
	ALS out	R1700m	R1700m	R1700m	R1700m
	RNP	830' (363')	830' (363')	830' (363')	830' (363')
	LNAV	R1200m	R1200m	R1400m	R1400m
ALS out	R1900m	R1900m	R2100m	R2100m	
2 VOR	970' (503') R1600m	970' (503') R1600m	970' (503') R1600m	970' (503') R1600m	
ALS out	R2400m	R2400m	R2400m	R2400m	
VOR	970' (503') R1800m	970' (503') R1800m	970' (503') R2000m	970' (503') R2000m	
ALS out	R2600m	R2600m	R2800m	R2800m	
23C	CAT 2 ILS	475' (100') RA107' R300m	484' (109') RA116' R300m	496' (121') RA129' R400m	510' (135') RA143' R400m
	ILS	605' (230')	617' (242')	625' (250')	636' (261')
	ALS out	R800m R1200m	R800m R1300m	R800m R1300m	R900m R1300m

1 RVR 750m when a Flight Director or Autopilot or HUD to DA is not used.
2 Continuous Descent Final Approach.

HECA/CAI

JEPPESEN
21 JAN 22 10-9S2 .Eff.27.Jan.

EASA AIR OPS
CAIRO, EGYPT
CAIRO INTL

STRAIGHT-IN RWY		A	B	C	D	
23C (contd)	1 LOC	760' (385') R1100m	760' (385') R1100m	760' (385') R1100m	760' (385') R1100m	
	ALS out	R1500m	R1500m	R1800m	R1800m	
	LOC	760' (385') R1300m	760' (385') R1300m	760' (385') R1500m	760' (385') R1500m	
	ALS out	R2000m	R2000m	R2200m	R2200m	
	RNP 1 LNAV	810' (435') R1600m	810' (435') R1600m	810' (435') R1600m	810' (435') R1600m	
	ALS out	R2000m	R2000m	R2000m	R2000m	
	RNP LNAV	810' (435') R1600m	810' (435') R1600m	810' (435') R1700m	810' (435') R1700m	
	ALS out	R2200m	R2200m	R2400m	R2400m	
	1 VOR	760' (385') R1400m	760' (385') R1400m	760' (385') R1400m	760' (385') R1400m	
	ALS out	R1800m	R1800m	R1800m	R1800m	
	VOR	760' (385') R1400m	760' (385') R1400m	760' (385') R1500m	760' (385') R1500m	
	ALS out	R2000m	R2000m	R2200m	R2200m	
	23R	ILS	658' (459') R1500m	670' (471') R1500m	678' (479') R2000m	689' (490') R2100m
		ALS out	R2100m	R2200m	R2200m	R2300m
1 LOC		780' (581') R2500m	780' (581') R2500m	780' (581') R2500m	780' (581') R2500m	
ALS out		R2700m	R2700m	R2700m	R2700m	
LOC		780' (581') R2700m	780' (581') R2700m	780' (581') R2900m	780' (581') R2900m	
ALS out		R2900m	R2900m	R3100m	R3100m	
RNP 1 LNAV		830' (631') R2700m	830' (631') R2700m	830' (631') R2700m	830' (631') R2700m	
ALS out		R2900m	R2900m	R2900m	R2900m	
RNP LNAV		830' (631') R2900m	830' (631') R2900m	830' (631') R3100m	830' (631') R3100m	
ALS out		R3100m	R3100m	R3300m	R3300m	
1 VOR		780' (581') R2500m	780' (581') R2500m	780' (581') R2500m	780' (581') R2500m	
ALS out		R2700m	R2700m	R2700m	R2700m	
VOR		780' (581') R2700m	780' (581') R2700m	780' (581') R2900m	780' (581') R2900m	
ALS out		R2900m	R2900m	R3100m	R3100m	

1 Continuous Descent Final Approach.

TAKE-OFF

Low Visibility Take-off							
RL & CL & relevant RVR	RL & CL	RL & RCLM	RL or CL	RL or RCLM	RL or CL	Adequate Vis Ref	
		DAY	NIGHT	DAY	NIGHT	DAY	NIGHT
TDZ R200m TDZ and MID and/or RO R150m	R200m	R300m		R/V400m		R/V500m	NA

HECA/CAI

CAIRO INTL

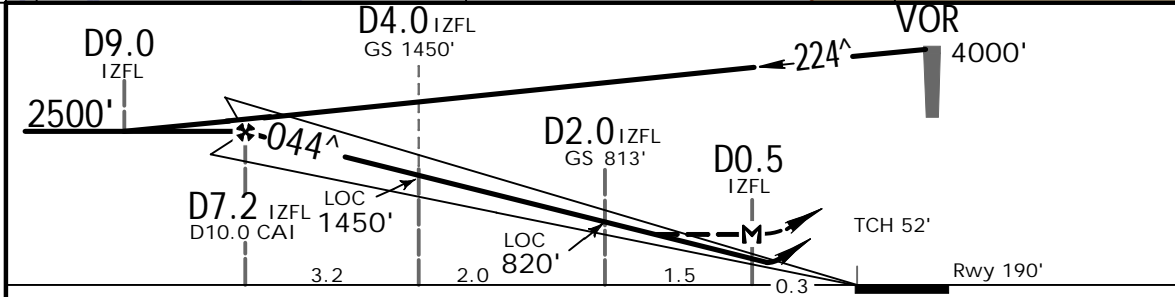
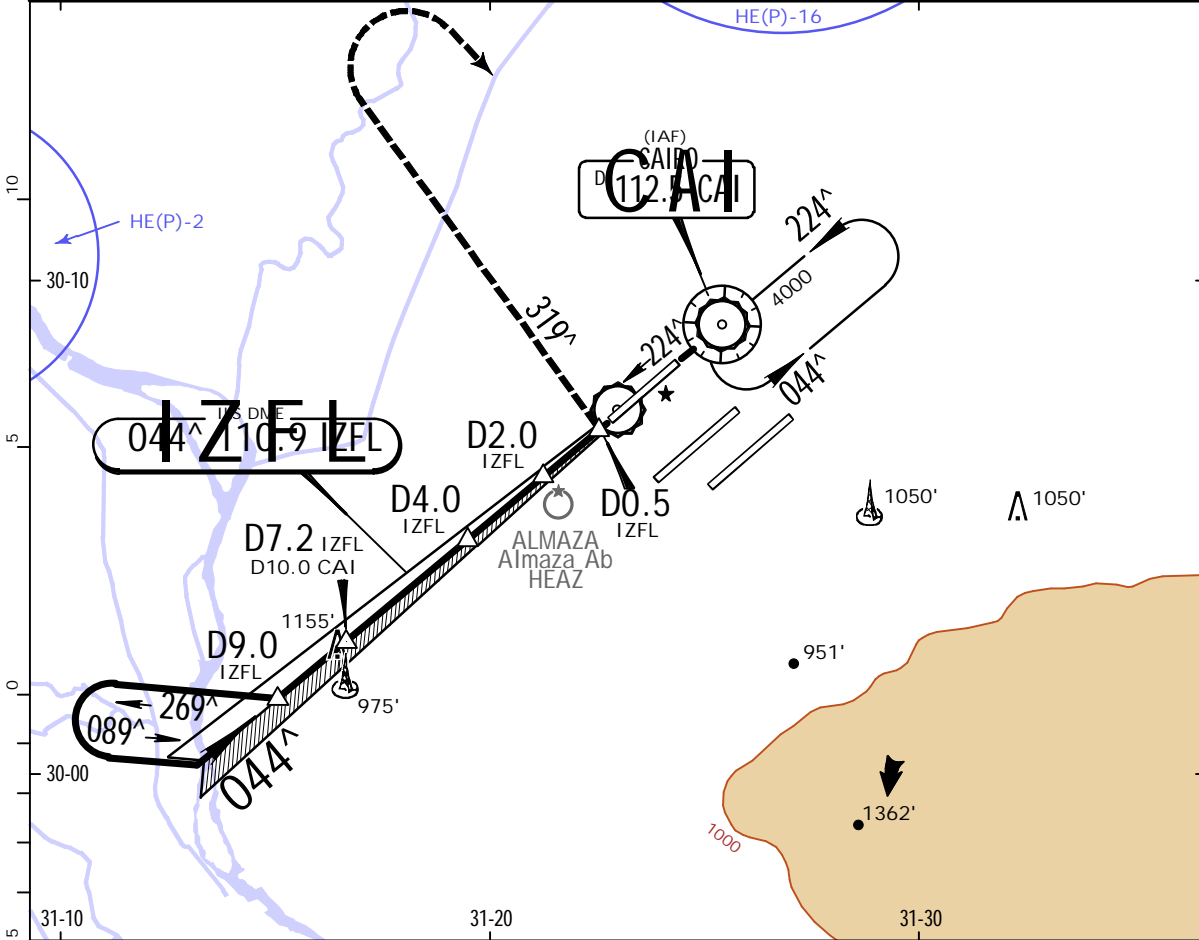
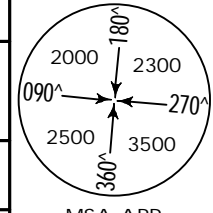


21 JAN 22 (11-1).Eff.27.Jan.

CAIRO, EGYPT

ILS or LOC Rwy 05L

D-ATIS 122.6		CAIRO Approach (R) 119.050		CAIRO Tower 118.1		South 120.4	Ground North 121.9
LOC IZFL 110.9		Final Apch Crs 044 [^]		D7.2 IZFL 2500' (2310')		ILS DA(H) Refer to Minimums	
						Apt Elev 467' Rwy 190'	
MISSED APCH: Turn LEFT onto 319 [^] climbing to 2500', then turn RIGHT to VOR and hold at 4000', or as directed.							
Alt Set: hPa		Rwy Elev: 7 hPa		Trans level: FL060		Trans alt: 4500'	



Gnd speed-Kts	70	90	100	120	140	160	
ILS GS or LOC Descent Angle	3.00 [^]	372	478	531	637	743	
MAP at D0.5 IZFL							

PANS OPS	State.		ILS STRAIGHT-IN LANDING		LOC (GS out)	
	DA(H) A: 440' (250') C: 460' (270')		DA(H) B: 452' (262') D: 471' (281')		MDA(H) 760' (570')	
	FULL		ALS out		ALS out	
	A	R600m	R1300m	R1900m	R2600m	
B						
C						
D	R650m	R1400m				

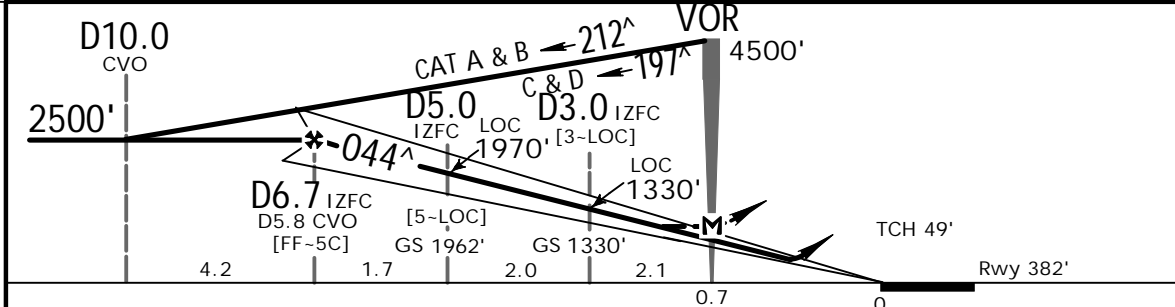
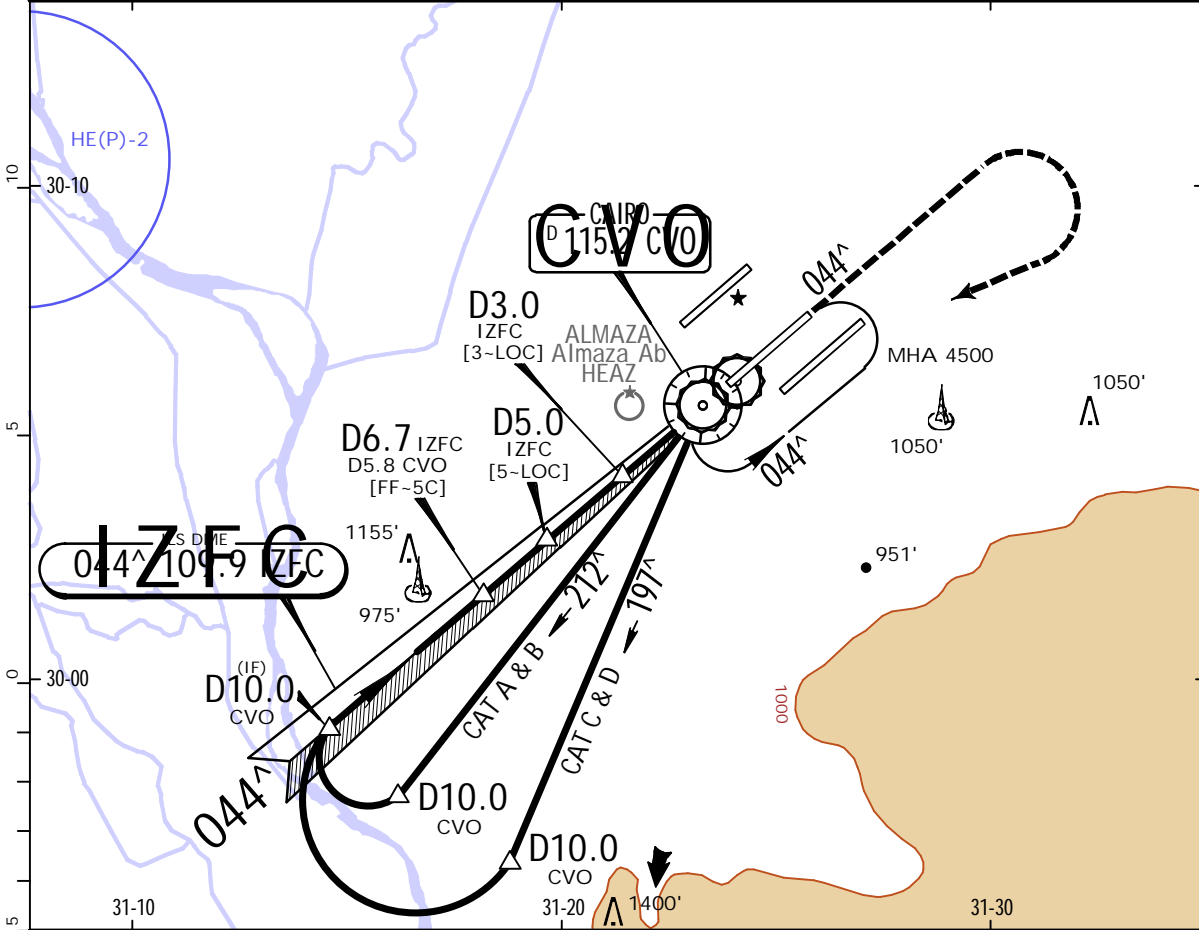
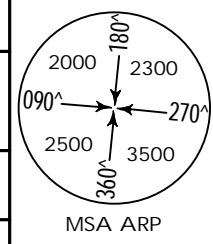
HECA/CAI
CAIRO INTL

JEPPESSEN

21 JAN 22 (11-2). Eff. 27. Jan.

CAIRO, EGYPT
ILS or LOC Rwy 05C

D-ATIS 122.6	CAIRO Approach (R) 119.050	CAIRO Tower 118.1	South Ground 120.4	North 121.9
LOC IZFC 109.9	Final Apch Crs 044 [^]	D6.7 IZFC 2500' (2118')	ILS DA(H) Refer to Minimums	Apt Elev 467' Rwy 382'
MISSED APCH: Climb STRAIGHT AHEAD to 2000', then turn RIGHT climbing to reach VOR at 4500' and hold, or as directed.				
Alt Set: hPa	Rwy Elev: 14 hPa	Trans level: FLO60	Trans alt: 4500'	



Gnd speed-Kts	70	90	100	120	140	160	HIALS-II PAPI 2000'
ILS GS or LOC Descent Angle	3.00 [^]	372	478	531	637	849	
MAP at VOR							

PANS OPS	State.		ILS STRAIGHT-IN LANDING		LOC (GS out)	
	DA(H) A: 611' (229') B: 623' (241')		C: 631' (249') D: 642' (260')		1 DA/MDA(H) 710' (328')	
	FULL		ALS out		ALS out	
	A	R550m	R1200m		R800m	R1500m
B	R1300m					
C	R600m					
D						

1 VNAV DA(H) in lieu of MDA(H) depends on operator policy.
 CHANGES: Proc title. MSA. Bearings. New AOM concept. | JEPPESSEN, 2000, 2022. ALL RIGHTS RESERVED.

HECA/CAI

CAIRO INTL



21 JAN 22

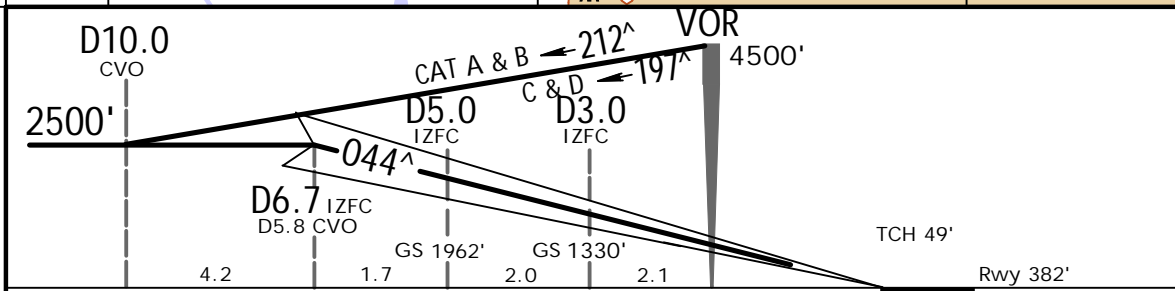
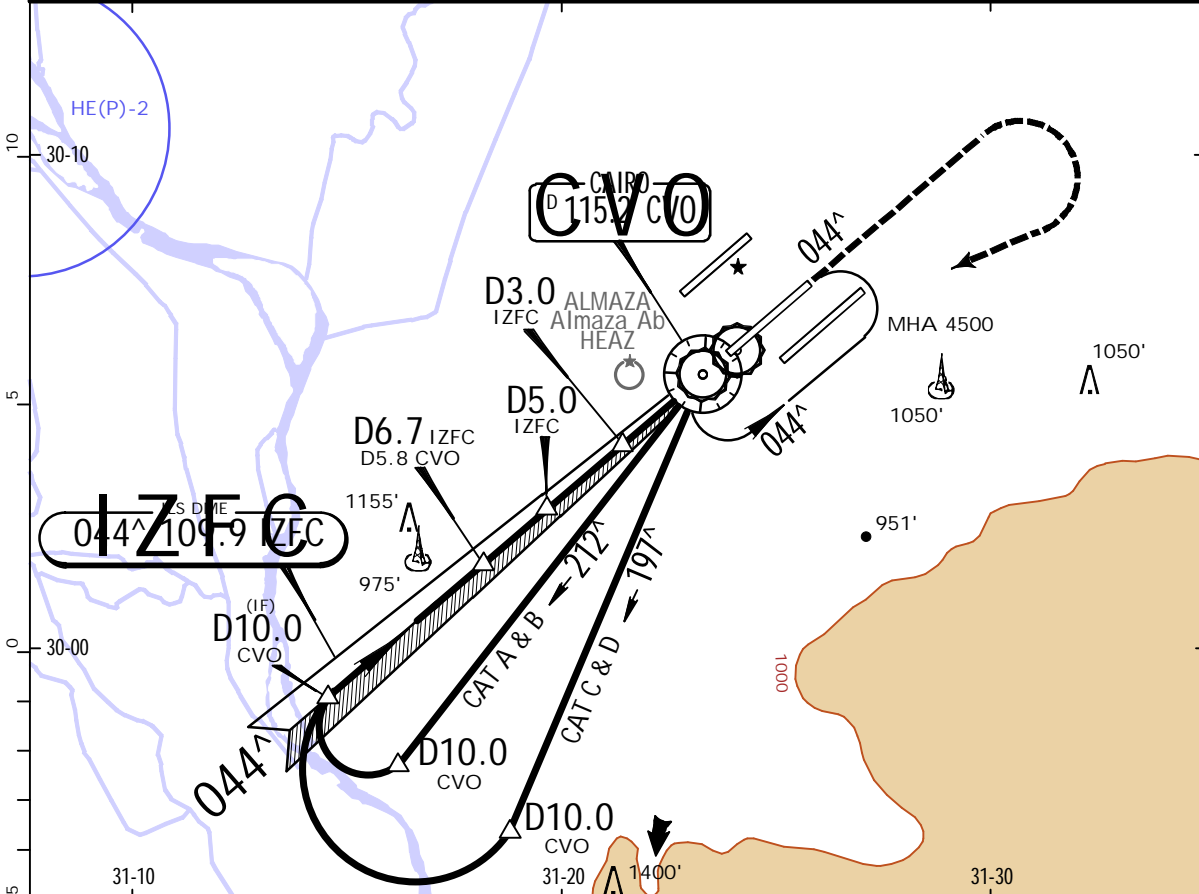
(11-2A)

.Eff.27.Jan.

CAIRO, EGYPT

CAT II ILS Rwy 05C

BRIEFING STRIP™	D-ATIS 122.6	CAIRO Approach (R) 119.050	CAIRO Tower 118.1	South Ground 120.4	North 121.9	<p>MSA ARP</p>
	LOC IZFC 109.9	Final Apch Crs 044^	D6.7 IZFC 2500' (2118')	CAT II ILS RA/DA(H) Refer to Minimums	Apt Elev 467' Rwy 382'	
	<p>MISSED APCH: Climb STRAIGHT AHEAD to 2000', then turn RIGHT climbing to reach VOR at 4500' and hold, or as directed.</p> <p>Alt Set: hPa Rwy Elev: 14 hPa Trans level: FLO60 Trans alt: 4500'</p> <p>Special Aircrew and Acft Certification Required.</p>					



Gnd speed-Kts	70	90	100	120	140	160	<p>2000'</p>
GS	3.00^	372	478	531	637	849	

.State.				STRAIGHT-IN LANDING CAT II ILS			
<p>A RA 104' DA(H) 482' (100')</p>		<p>B RA 111' DA(H) 491' (109')</p>		<p>C RA 119' DA(H) 503' (121')</p>		<p>D RA 129' DA(H) 517' (135')</p>	
R300m				R400m			

HECA/CAI

CAIRO INTL

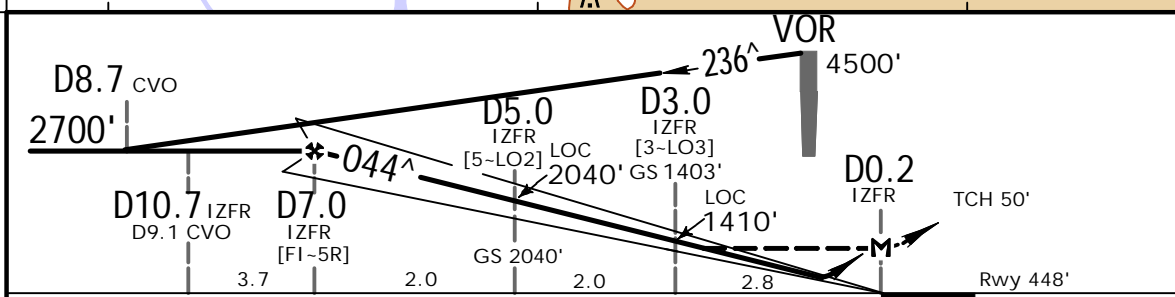
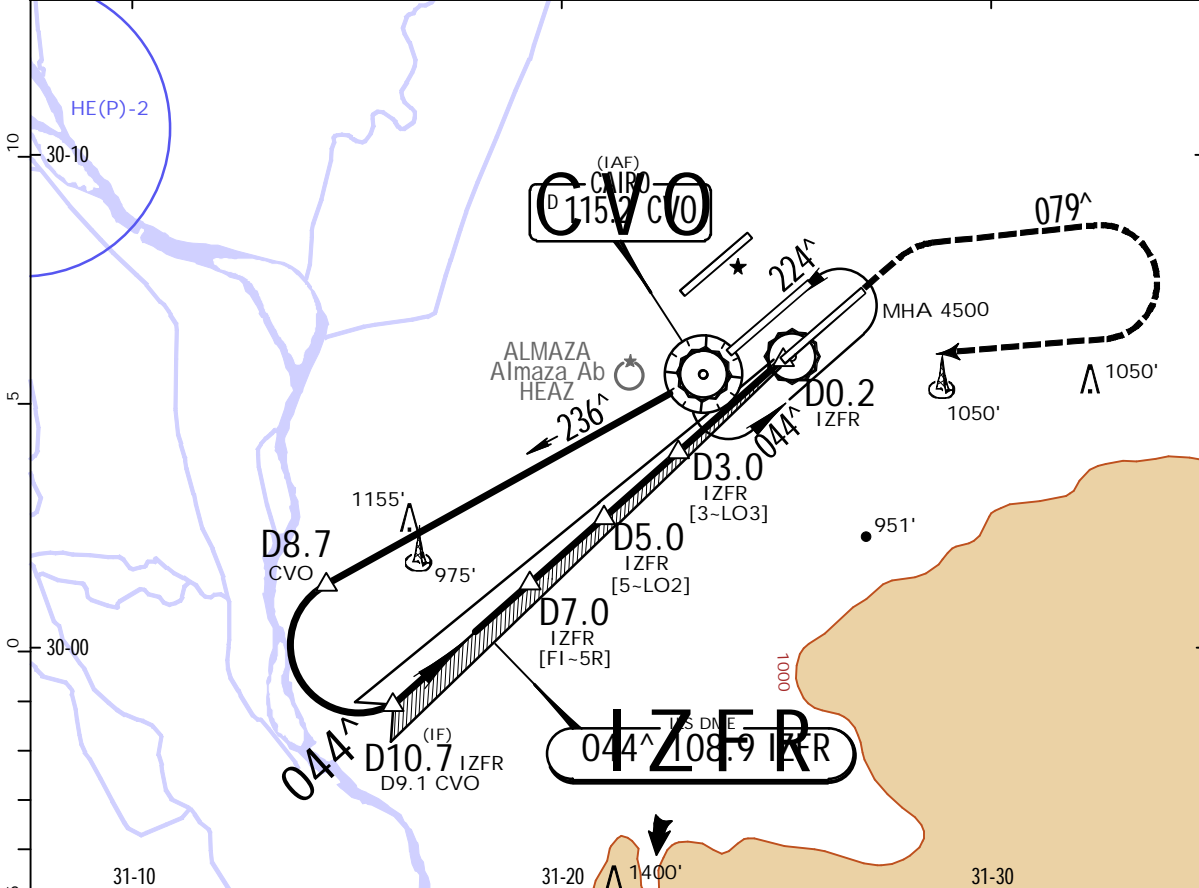


21 JAN 22 (11-3). Eff. 27. Jan.

CAIRO, EGYPT

ILS or LOC Rwy 05R

D-ATIS 122.6		CAIRO Approach (R) 119.050		CAIRO Tower 118.1		South 120.4	Ground 121.9	<p>MSA ARP</p>	
LOC IZFR 108.9		Final Apch Crs 044 [^]		D7.0 IZFR 2700' (2252')		ILS DA(H) Refer to Minimums			Apt Elev 467' Rwy 448'
<p>MISSED APCH: Climb STRAIGHT AHEAD to 1500', then turn RIGHT on 079[^] to 2000', then turn RIGHT to reach VOR at 4500' and hold, or as directed.</p>									
Alt Set: hPa		Rwy Elev: 16 hPa		Trans level: FLO60		Trans alt: 4500'			



Gnd speed-Kts	70	90	100	120	140	160		1500'	2000'	079 [^]	
ILS GS or LOC Descent Angle	3.00 [^]	372	478	531	637	743		849	↑		↗
MAP at D0.2 IZFR											

PANS OPS	State.		ILS STRAIGHT-IN LANDING		LOC (GS out)	
	DA(H) A: 677' (229') C: 697' (249')		B: 689' (241') D: 708' (260')		1 DA/MDA(H) 800' (352')	
	FULL		ALS out		ALS out	
	A	R550m	R1200m		R900m	R1500m
B	R1300m		R1600m			
C	R600m					
D						

1 VNAV DA(H) in lieu of MDA(H) depends on operator policy.
 CHANGES: Proc title. MSA. Bearings. Missed apch. New AOM concept. | JEPPESEN, 2010, 2022. ALL RIGHTS RESERVED.

HECA/CAI

CAIRO INTL



21 JAN 22

(11-3A)

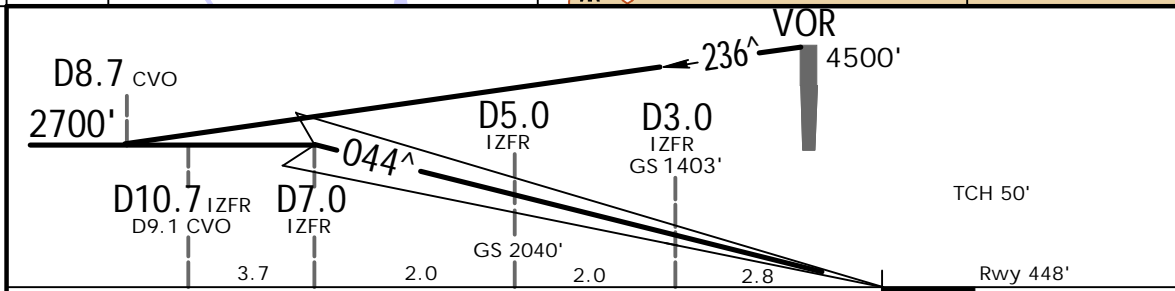
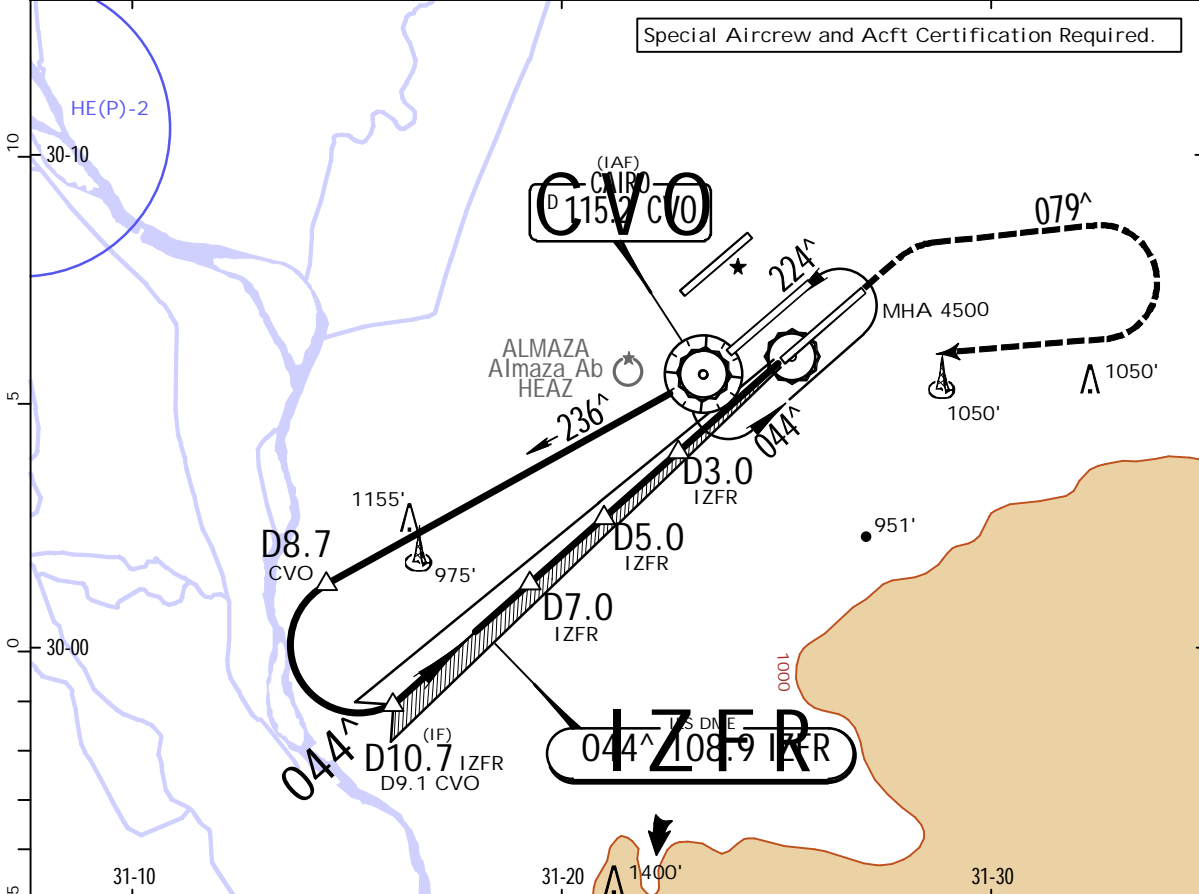
.Eff.27.Jan.

CAIRO, EGYPT

CAT II ILS Rwy 05R

BRIEFING STRIP™	D-ATIS 122.6	CAIRO Approach (R) 119.050	CAIRO Tower 118.1	South Ground 120.4	North 121.9	
	LOC IZFR 108.9	Final Apch Crs 044 [^]	D7.0 IZFR 2700' (2252')	CAT II ILS RA/DA(H) Refer to Minimums	Apt Elev 467' Rwy 448'	
MISSED APCH: Climb STRAIGHT AHEAD to 1500', then turn RIGHT on 079 [^] to 2000', then turn RIGHT to reach VOR at 4500' and hold, or as directed.						
Alt Set: hPa		Rwy Elev: 16 hPa	Trans level: FL060		Trans alt: 4500'	

Special Aircrew and Acft Certification Required.



Gnd speed-Kts	70	90	100	120	140	160	HI ALS-II PAPI PAPI	1500' ↑ 2000' ↑ on RT	079 [^]
GS	3.00 [^]	372	478	531	637	849			

.State.			STRAIGHT-IN LANDING CAT II ILS		
AB RA 90' DA(H) 548' (100')	C RA 100' DA(H) 560' (112')	D RA 111' DA(H) 574' (126')			

PANS OPS	R300m	R400m
----------	-------	-------

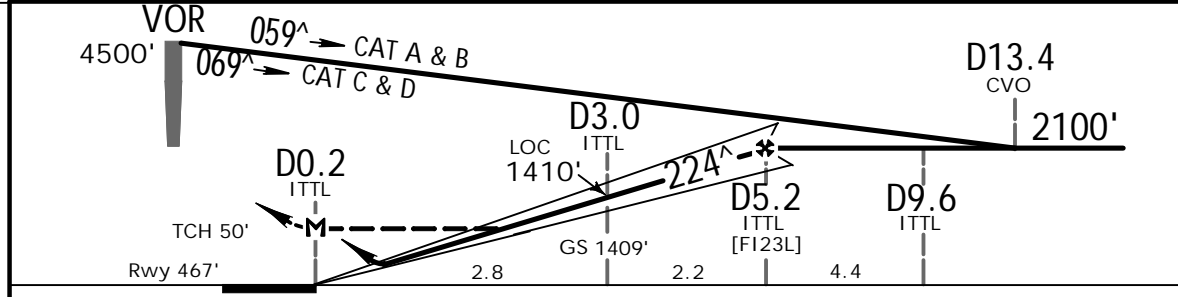
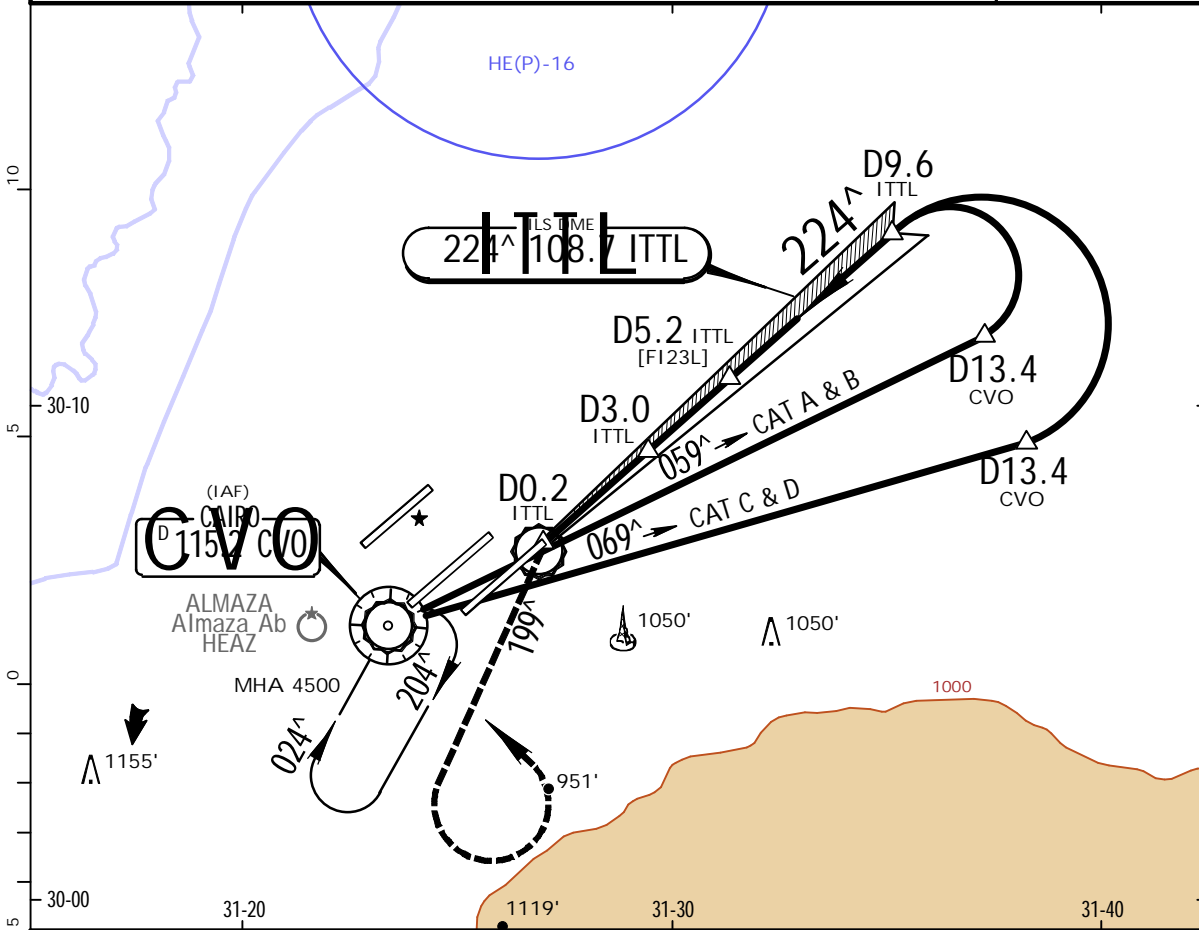
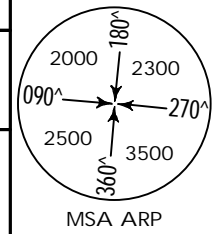
HECA/CAI
CAIRO INTL



21 JAN 22 (11-4) .Eff.27.Jan.

CAIRO, EGYPT
ILS or LOC Rwy 23L

D-ATIS 122.6	CAIRO Approach (R) 119.050	CAIRO Tower 118.1	South Ground 120.4	North 121.9
LOC ITTL 108.7	Final Apch Crs 224 [^]	D5.2 ITTL 2100' (1633')	ILS DA(H) Refer to Minimums	Apt Elev 467' Rwy 467'
MISSED APCH: Turn LEFT to 199 [^] climbing to 2000', then turn LEFT climbing to reach VOR at 4500' and hold, or as directed.				
Alt Set: hPa	Rwy Elev: 17 hPa	Trans level: FL060	Trans alt: 4500'	



Gnd speed-Kts	70	90	100	120	140	160	HI ALS-II PAPI 2000' on 199 [^] LT	
ILS GS or LOC Descent Angle	3.00 [^]	372	478	531	637	743		849
MAP at D0.2 ITTL								

State.	ILS STRAIGHT-IN LANDING		LOC (GS out)	
	DA(H) A: 697' (230') B: 709' (242')	C: 717' (250') D: 728' (261')	CDFA 1 DA/MDA(H) 970' (503')	
	FULL	ALS out	ALS out	

A	R550m	R1200m	R1500m	
B		R1300m	R1600m	
C	R600m		R1600m	R2400m
D				

1 VNAV DA(H) in lieu of MDA(H) depends on operator policy.
 CHANGES: Proc title. MSA. Bearings. Missed apch. New AOM concept. | JEPPesen, 2010, 2022. ALL RIGHTS RESERVED.

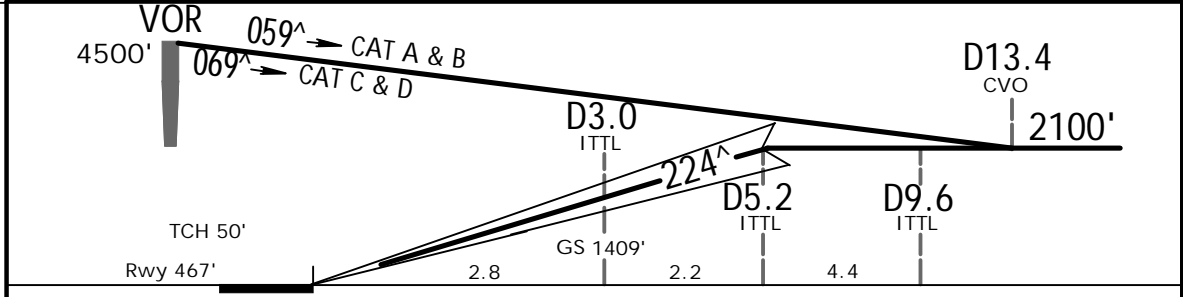
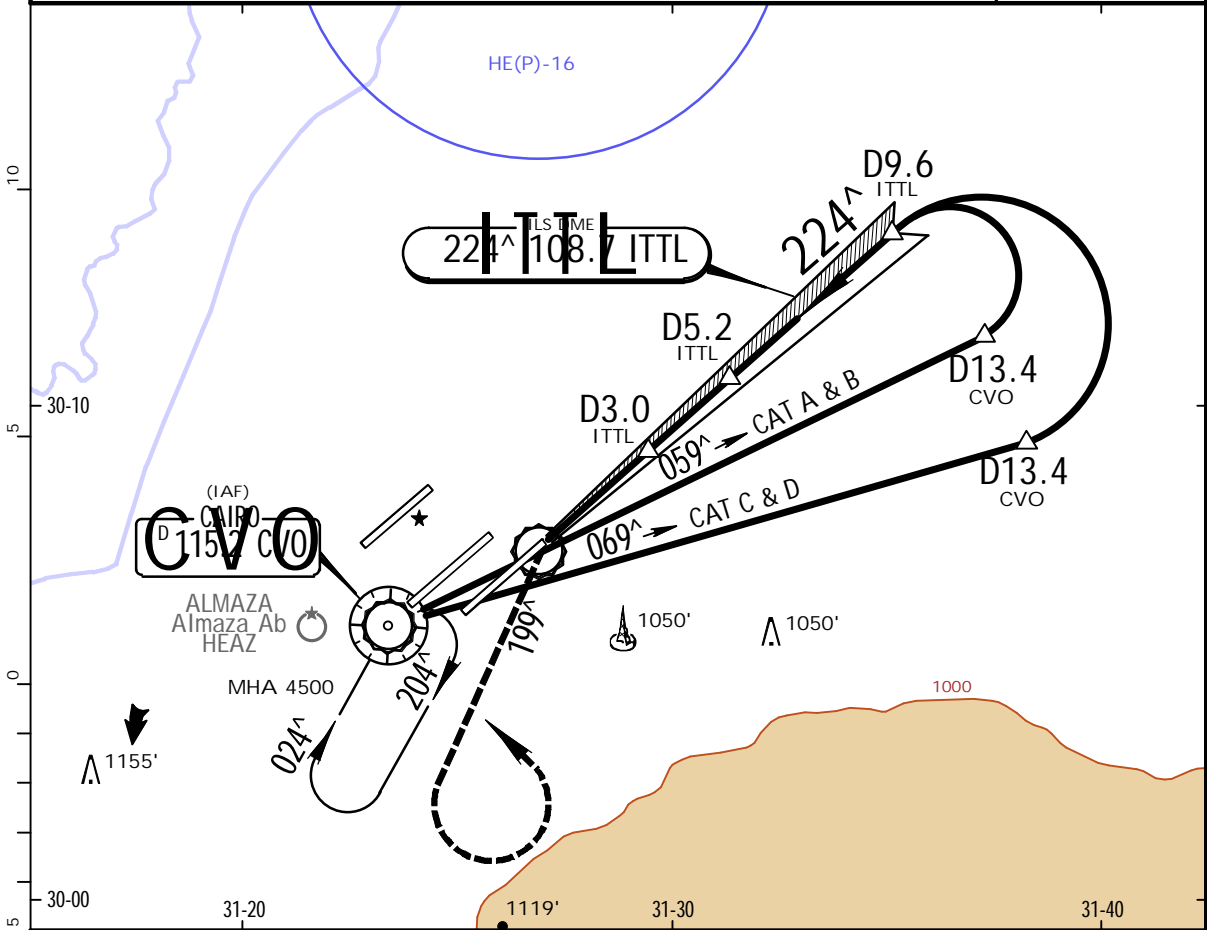
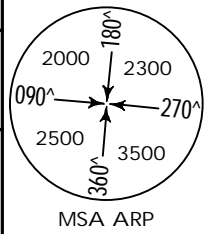
HECA/CAI
CAIRO INTL



21 JAN 22 (11-4A) .Eff.27.Jan.

CAIRO, EGYPT
CAT II ILS Rwy 23L

D-ATIS 122.6	CAIRO Approach (R) 119.050	CAIRO Tower 118.1	South Ground 120.4	North 121.9
LOC ITTL 108.7	Final Apch Crs 224 [^]	D5.2 ITTL 2100' (1633')	CAT II ILS RA/DA(H) Refer to Minimums	Apt Elev 467' Rwy 467'
MISSED APCH: Turn LEFT to 199 [^] climbing to 2000', then turn LEFT climbing to reach VOR at 4500' and hold, or as directed.				
Alt Set: hPa	Rwy Elev: 17 hPa	Trans level: FL060	Trans alt: 4500'	



Gnd speed-Kts	70	90	100	120	140	160	
GS	3.00 [^]	372	478	531	637	849	

.State.			STRAIGHT-IN LANDING CAT II ILS		
AB RA 101' DA(H) 567' (100')	C RA 115' DA(H) 579' (112')	D RA 130' DA(H) 593' (126')			

R300m	R400m
-------	-------

PANS OPS

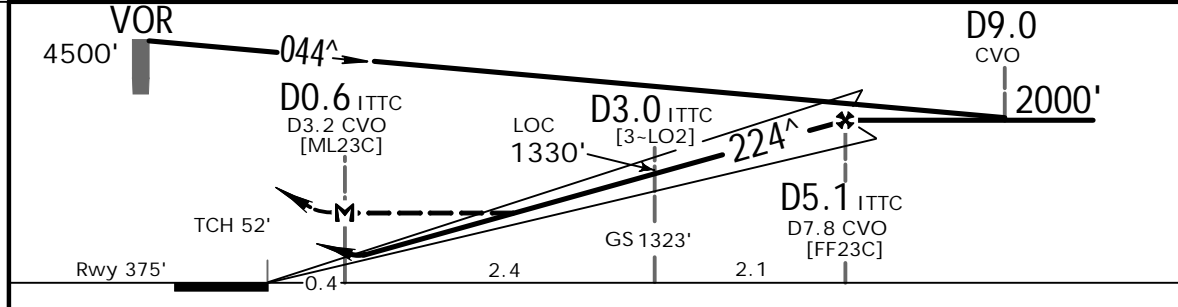
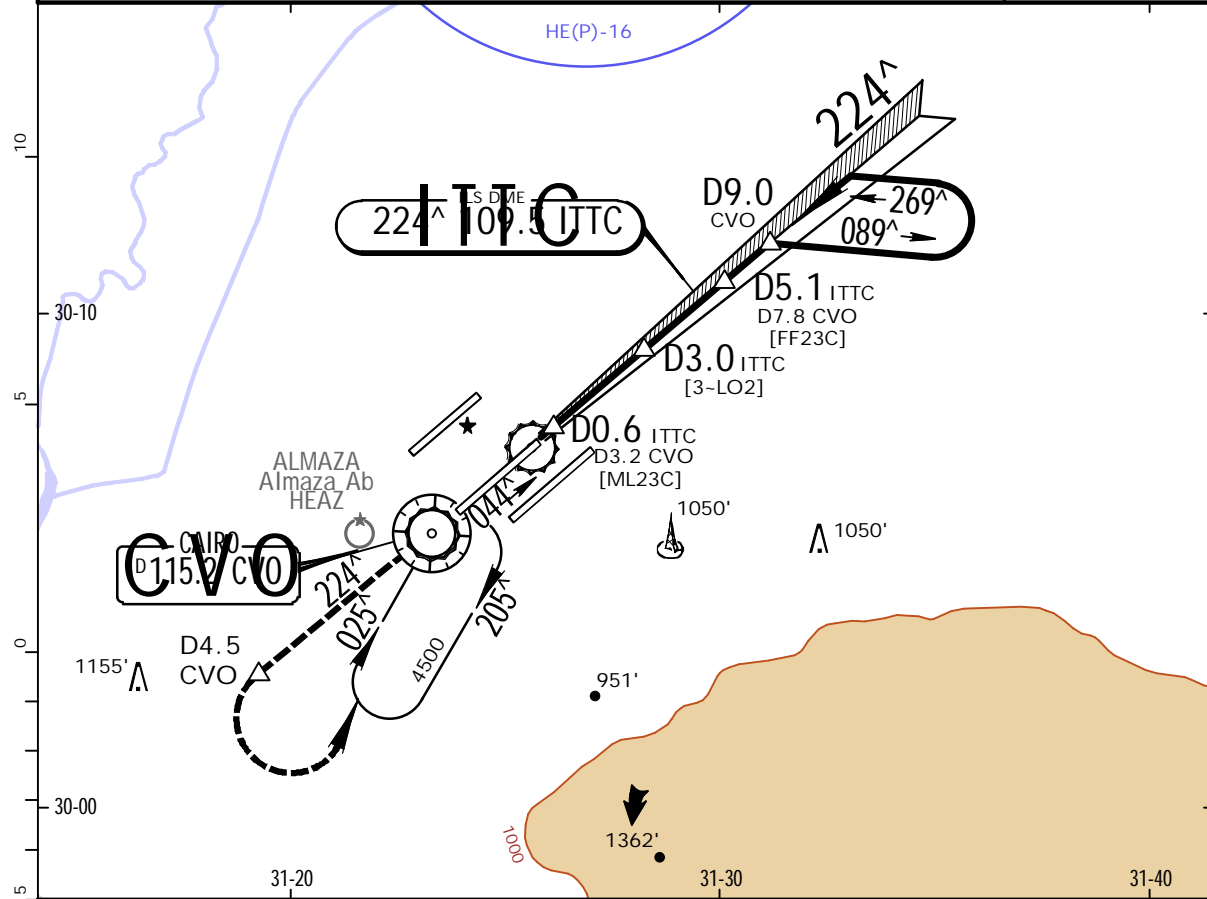
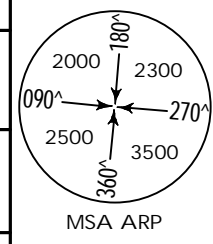
HECA/CAI
CAIRO INTL



21 JAN 22 (11-5). Eff. 27. Jan.

CAIRO, EGYPT
ILS or LOC Rwy 23C

D-ATIS 122.6	CAIRO Approach (R) 119.050	CAIRO Tower 118.1	South Ground 120.4	North 121.9
LOC ITTC 109.5	Final Apch Crs 224 [^]	D5.1 ITTC 2000' (1625')	ILS DA(H) Refer to Minimums	Apt Elev 467' Rwy 375'
MISSED APCH: Climb STRAIGHT AHEAD to 2000'. Not later than D4.5 CVO turn LEFT to reach VOR at 4500' and hold, or as directed.				
Alt Set: hPa	Rwy Elev: 14 hPa	Trans level: FLO60	Trans alt: 4500'	



Gnd speed-Kts	70	90	100	120	140	160		2000' whichever CVO is earlier
ILS GS or	3.00 [^]							
LOC Descent Angle	372	478	531	637	743	849		
MAP at D0.6 ITTC/D3.2 CVO								

PANS OPS	State.		ILS STRAIGHT-IN LANDING		LOC (GS out)	
	DA(H) A: 605' (230') C: 625' (250')		B: 617' (242') D: 636' (261')		CDFA 760' (385')	
	FULL		ALS out		ALS out	
	A		R1200m			R1500m
B	R800m	R1300m		R1100m	R1800m	
C						
D	R900m					

1 VNAV DA(H) in lieu of MDA(H) depends on operator policy.
 CHANGES: Proc title. MSA. Bearings. Missed apch. New AOM concept. | JEPPESEN, 2000, 2022. ALL RIGHTS RESERVED.

HECA/CAI
CAIRO INTL

JEPPESEN

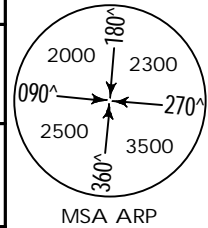
21 JAN 22

11-5A

.Eff.27.Jan.

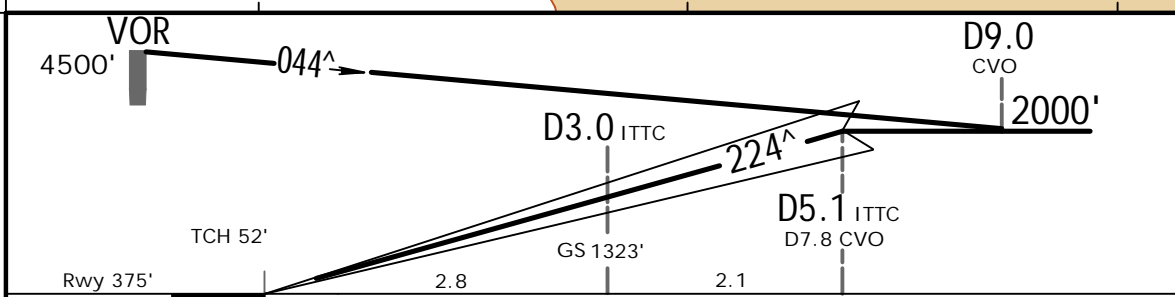
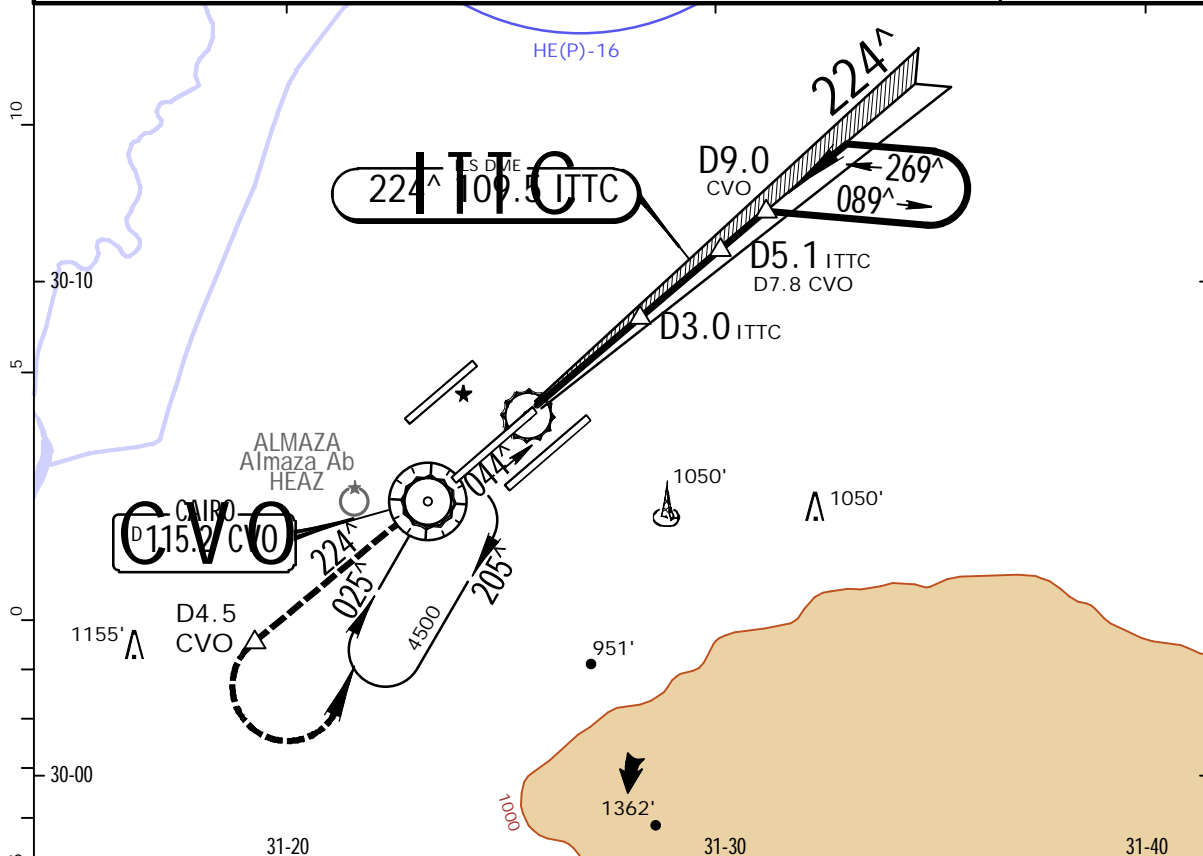
CAIRO, EGYPT
CAT II ILS Rwy 23C

D-ATIS 122.6	CAIRO Approach (R) 119.050	CAIRO Tower 118.1	South Ground 120.4	North 121.9
LOC ITTC 109.5	Final Apch Crs 224 [^]	D5.1 ITTC 2000' (1625')	CAT II ILS RA/DA(H) Refer to Minimums	
Apt Elev 467'			Rwy 375'	

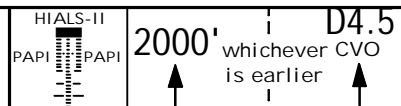


MISSED APCH: Climb STRAIGHT AHEAD to 2000'. Not later than D4.5 CVO turn LEFT to reach VOR at 4500' and hold, or as directed.

Alt Set: hPa Rwy Elev: 14 hPa Trans level: FL060 Trans alt: 4500'
Special Aircrew and Acft Certification Required.



Gnd speed-Kts	70	90	100	120	140	160
GS	3.00 [^]	372	478	531	637	849



.State.				STRAIGHT-IN LANDING CAT II ILS			
A RA 107' DA(H) 475' (100')		B RA 116' DA(H) 484' (109')		C RA 129' DA(H) 496' (121')		D RA 143' DA(H) 510' (135')	
R300m				R400m			

HECA/CAI

CAIRO INTL

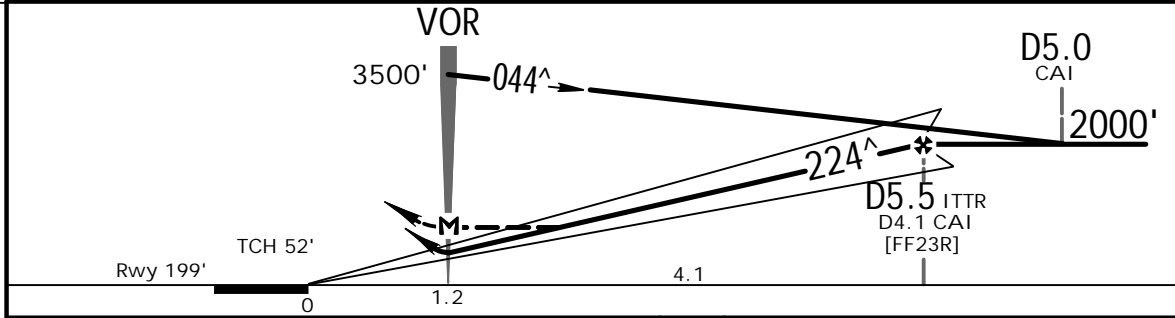
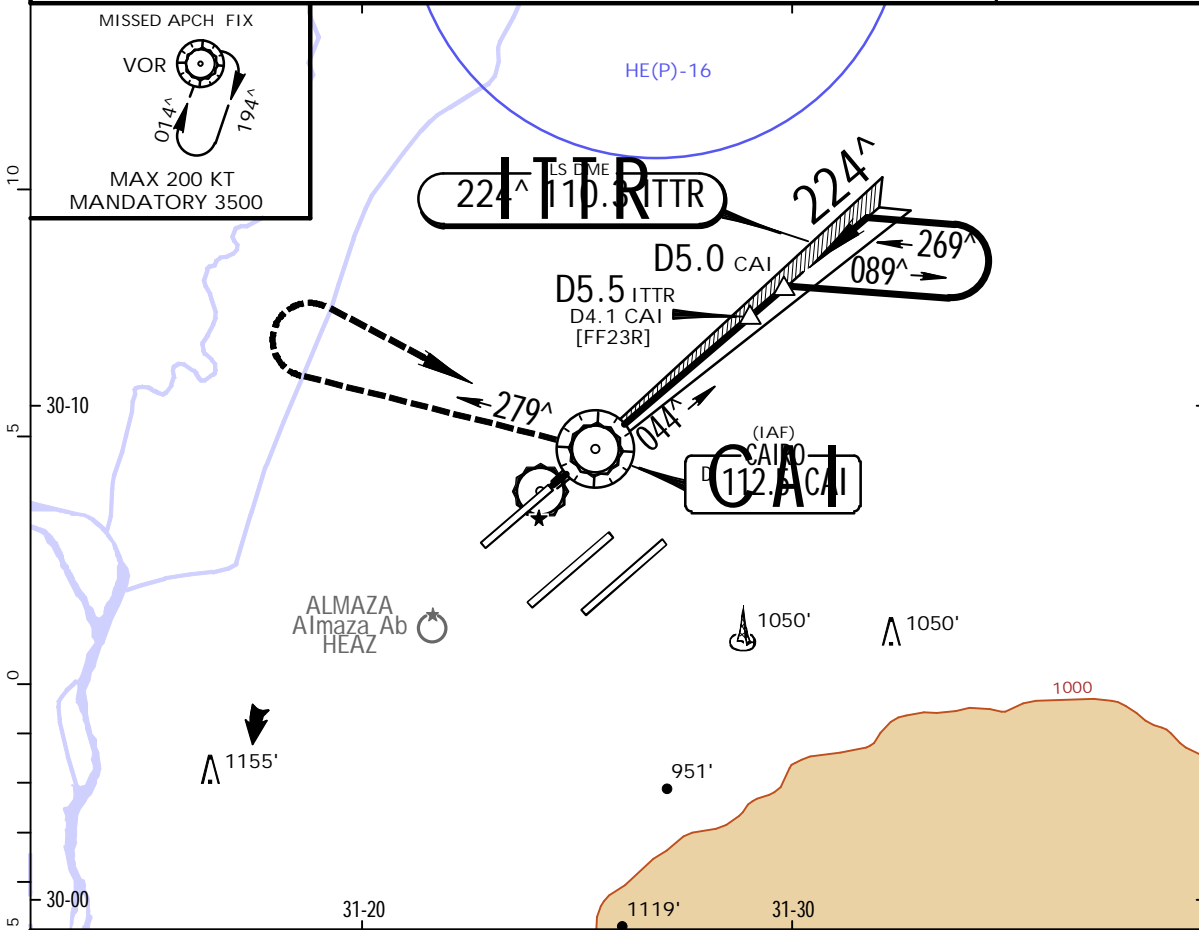
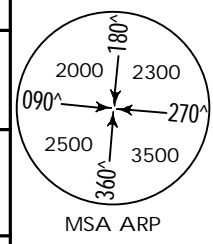


21 JAN 22 (11-6). Eff. 27. Jan.

CAIRO, EGYPT

ILS or LOC Rwy 23R

D-ATIS 122.6	CAIRO Approach (R) 119.050	CAIRO Tower 118.1	South Ground 120.4	North 121.9
LOC ITTR 110.3	Final Apch Crs 224 [^]	D5.5 ITTR 2000' (1801')	ILS DA(H) Refer to Minimums	Apt Elev 467' Rwy 199'
<p>MISSED APCH: Turn RIGHT onto track 279[^] climbing to 2000', then turn RIGHT to reach VOR at 3500' and hold, or as directed. MAX 220 KT.</p>				
Alt Set: hPa	Rwy Elev: 7 hPa	Trans level: FL060	Trans alt: 4500'	



Gnd speed-Kts	70	90	100	120	140	160		MAX 220 KT on 2000' RT 279 [^]
ILS GS or LOC Descent Angle	3.00 [^]	372	478	531	637	849		
MAP at VOR								

PANS OPS	ILS STRAIGHT-IN LANDING DA(H) A: 658' (459') C: 678' (479') B: 670' (471') D: 689' (490')		LOC (GS out) MDA(H) 780' (581')	
	FULL		ALS out	
	A	R1500m	R2100m	
	B	R2000m	R2200m	
	C	R2100m	R2500m	R2700m

HECA/CAI

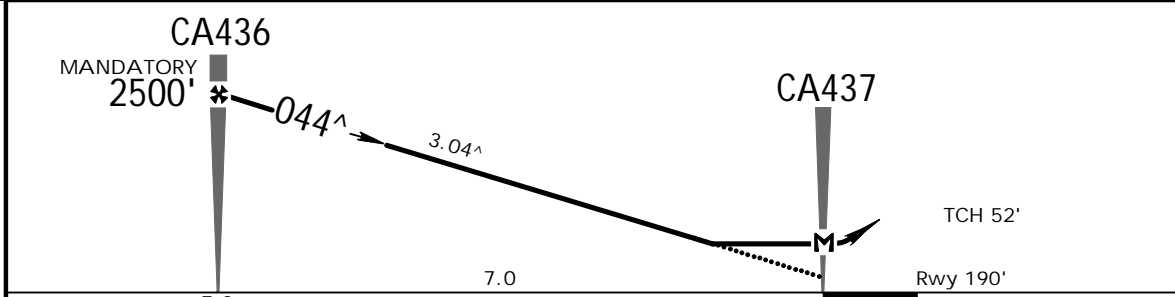
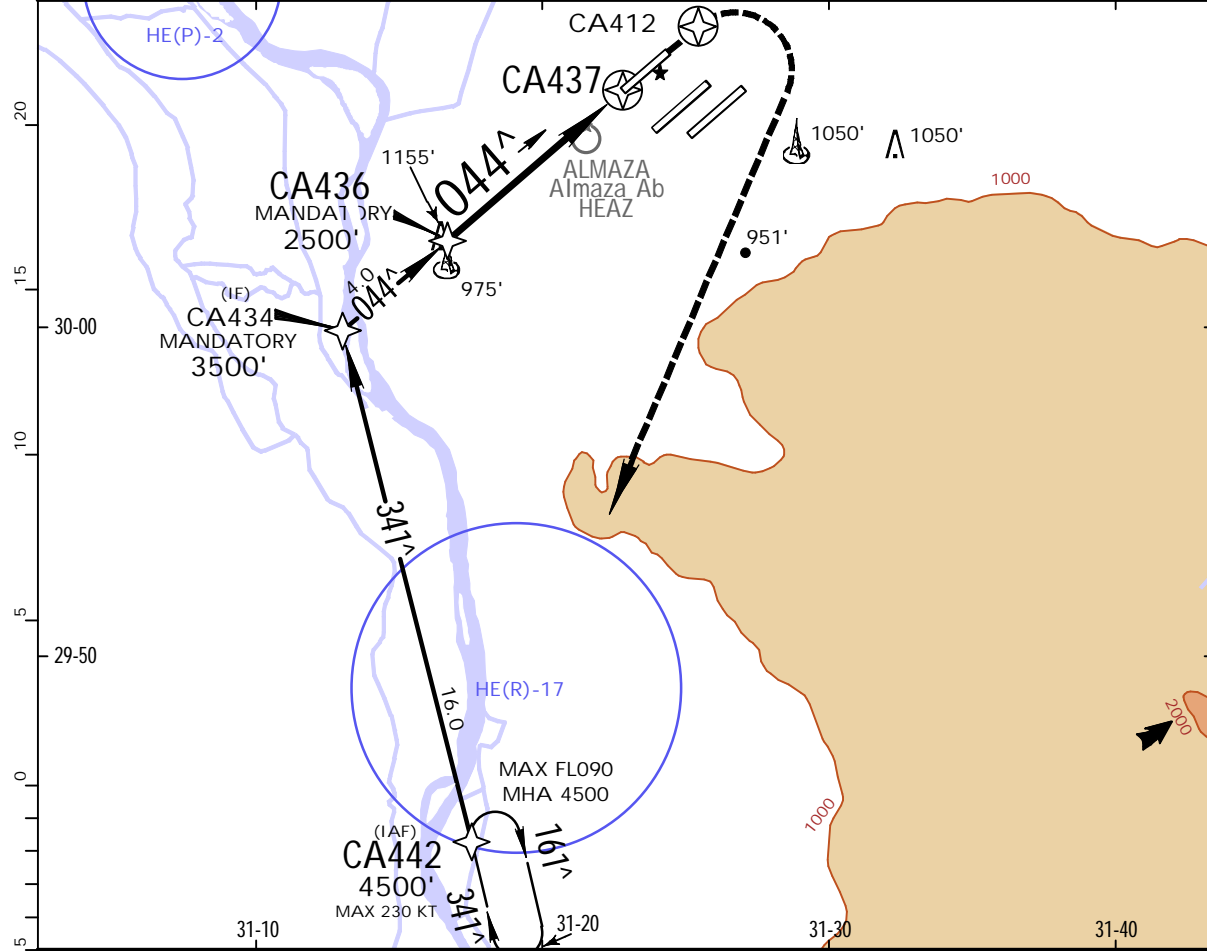
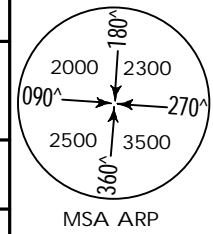
CAIRO INTL

JEPPesen
21 JAN 22 (12-1) .Eff.27.Jan.

CAIRO, EGYPT

RNP Rwy 05L

D-ATIS 122.6	CAIRO Approach (R) 119.050	CAIRO Tower 118.1	South 120.4	Ground North 121.9
RNAV	Final Apch Crs 044[^]	CA436 MANDATORY 2500' (2310')	MDA(H) 760' (570')	Apt Elev 467' Rwy 190'
MISSED APCH: Climb STRAIGHT AHEAD to cross CA412, then turn RIGHT to reach CA442 at 4500' and hold, or as directed.				
Alt Set: hPa	Rwy Elev: 7 hPa	Trans level: FLO60	Trans alt: 4500'	



MAP at CA437						
--------------	--	--	--	--	--	--

.State.		STRAIGHT-IN LANDING LNAV MDA(H) 760' (570')	
		ALS out	
A			
B			
C	R1900m		R2600m
D			

HECA/CAI

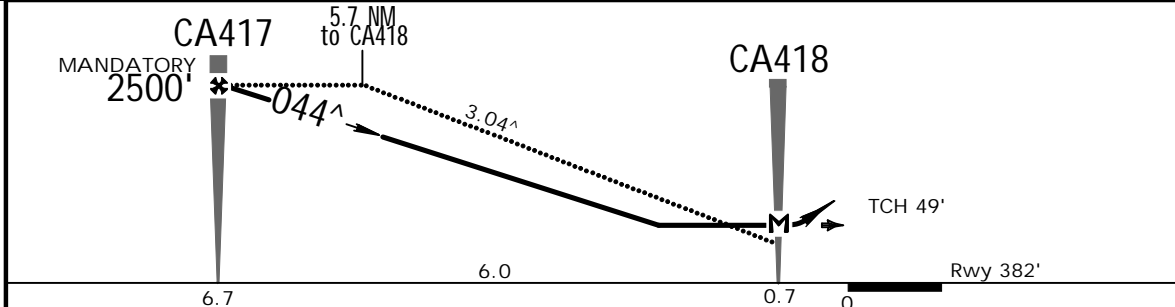
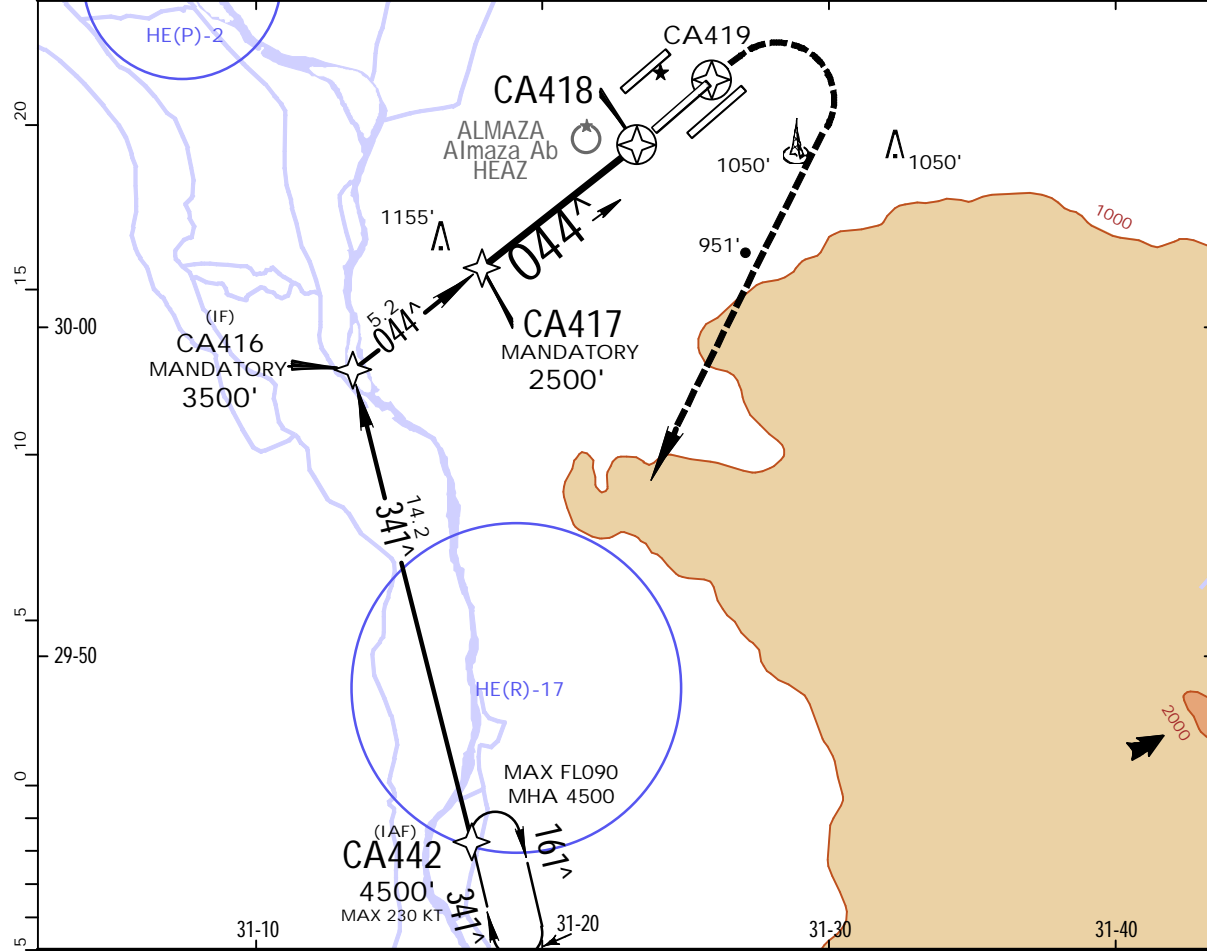
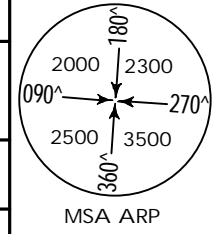
CAIRO INTL

JEPPESSEN
21 JAN 22 (12-2) .Eff.27.Jan.

CAIRO, EGYPT

RNP Rwy 05C

D-ATIS 122.6	CAIRO Approach (R) 119.050	CAIRO Tower 118.1	South 120.4	Ground North 121.9
RNAV	Final Apch Crs 044[^]	CA417 MANDATORY 2500' (2118')	MDA(H) 710' (328')	Apt Elev 467' Rwy 382'
MISSED APCH: Climb STRAIGHT AHEAD to cross CA419, then turn RIGHT to reach CA442 at 4500' and hold or as directed.				
Alt Set: hPa	Rwy Elev: 14 hPa	Trans level: FL060	Trans alt: 4500'	



Gnd speed-Kts	70	90	100	120	140	160	HIALS-II PAPI PAPI CA419
Descent Angle	3.04 [^]	376	484	538	645	861	
MAP at CA418							

.State. STRAIGHT-IN LANDING
LNAV
MDA(H) **710'** (328')

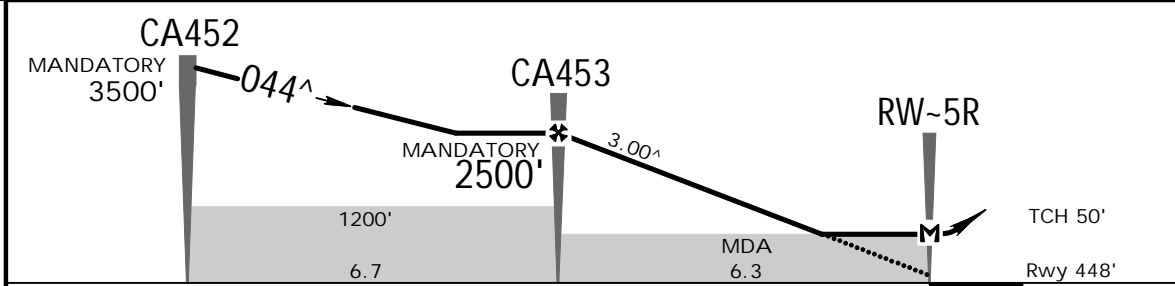
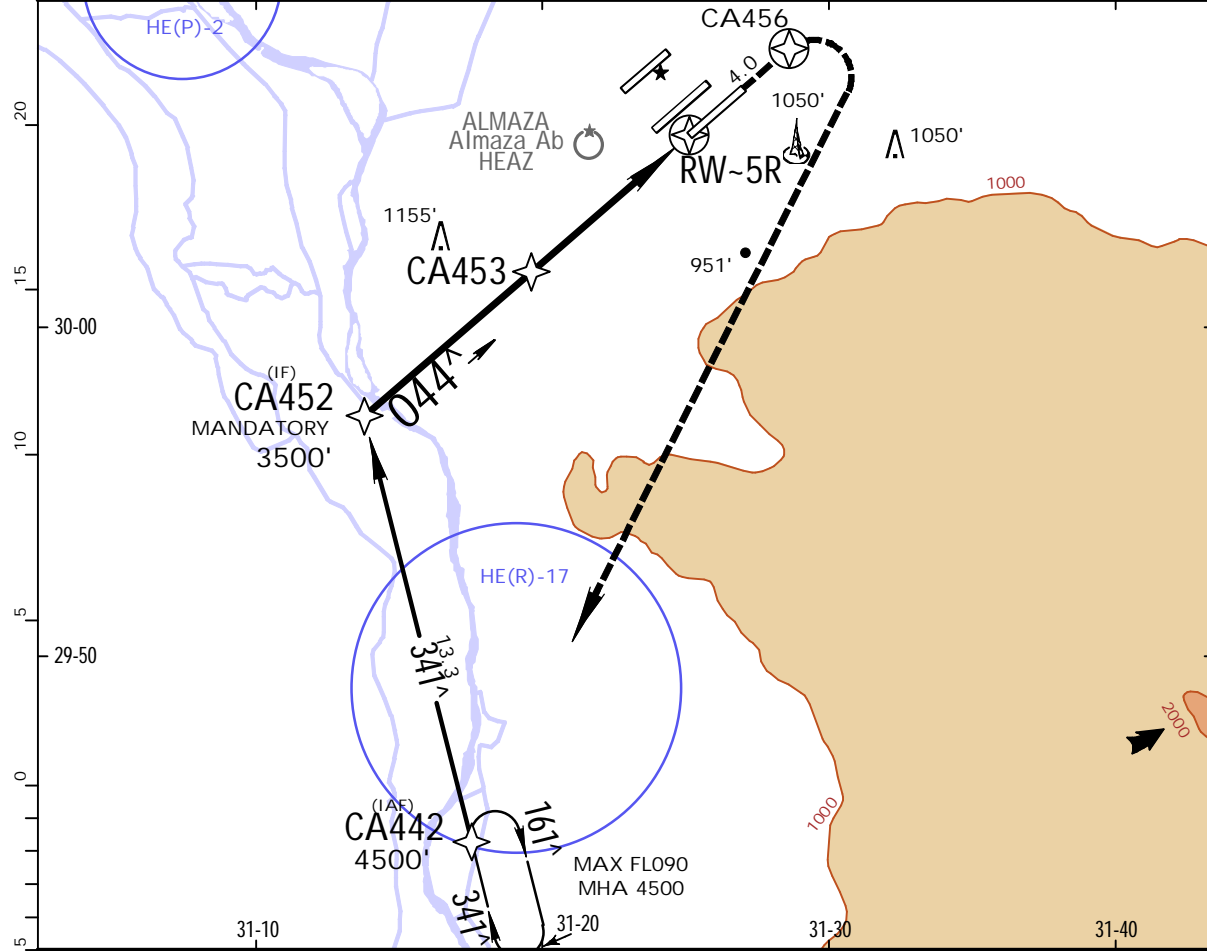
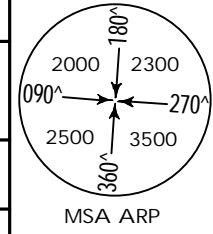
ALS out	
A	
B	
C	R1000m
D	R1500m

HECA/CAI
CAIRO INTL

JEPPESEN
21 JAN 22 (12-3) .Eff.27.Jan.

CAIRO, EGYPT
RNP Rwy 05R

D-ATIS 122.6	CAIRO Approach (R) 119.050	CAIRO Tower 118.1	South 120.4	Ground North 121.9
RNAV	Final Apch Crs 044[^]	CA453 MANDATORY 2500' (2052')	MDA(H) 820' (372')	Apt Elev 467' Rwy 448'
MISSED APCH: Climb STRAIGHT AHEAD to cross CA456, then turn RIGHT to reach CA442 at 4500' and hold or as directed.				
Alt Set: hPa	Rwy Elev: 16 hPa	Trans level: FL060	Trans alt: 4500'	



Gnd speed-Kts	70	90	100	120	140	160	HIALS-II PAPI PAPI CA456 ↑
Descent Angle 3.00 [^]	372	478	531	637	743	849	
MAP at RW-5R							

State. STRAIGHT-IN LANDING LNAV MDA(H) 820' (372') ALS out

A		
B		
C	R1000m	R1700m
D		

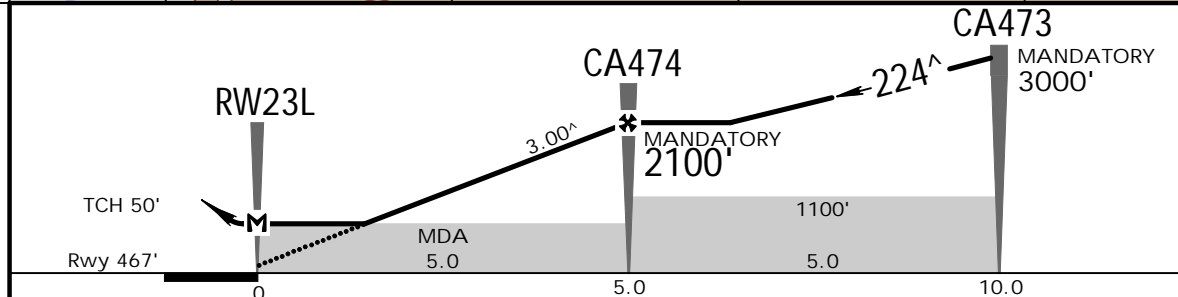
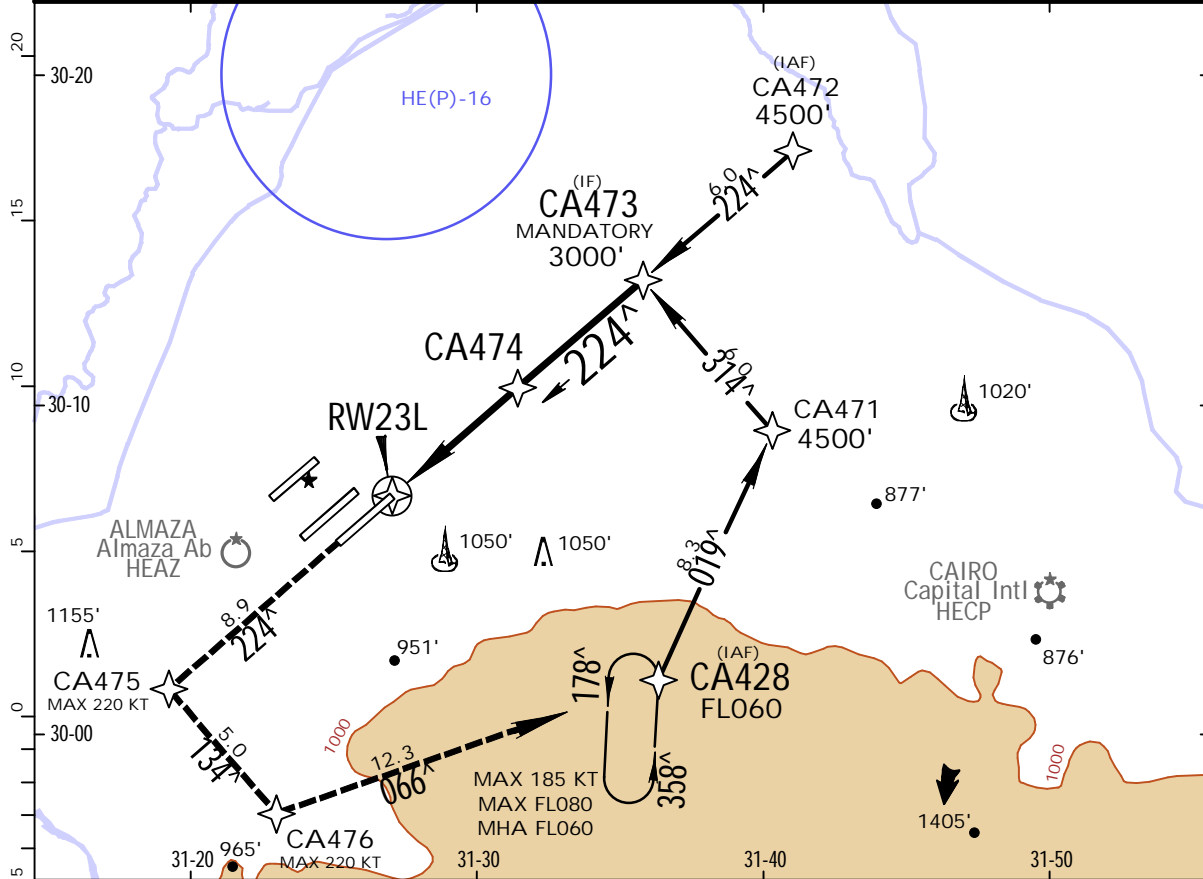
HECA/CAI
CAIRO INTL



21 JAN 22 (12-4) .Eff.27.Jan.

CAIRO, EGYPT
RNP Rwy 23L

D-ATIS 122.6		CAIRO Approach (R) 119.050		CAIRO Tower 118.1	Ground South 120.4 North 121.9	
RNAV	Final Apch Crs 224 [^]	CA474 MANDATORY 2100' (1633')	MDA(H) 830' (363')	Apt Elev 467' Rwy 467'		
MISSED APCH: Climb STRAIGHT AHEAD to CA475, then turn LEFT to CA476, then turn LEFT to CA428 at FL060 and hold or as directed.						
Alt Set: hPa		Rwy Elev: 17 hPa	Trans level: FL060		Trans alt: 4500'	
						MSA ARP



Gnd speed-Kts	70	90	100	120	140	160		CA475 ↑
Descent Angle 3.00 [^]	372	478	531	637	743	849		
MAP at RW23L								

.State. STRAIGHT-IN LANDING
LNAV
MDA(H) 830' (363')

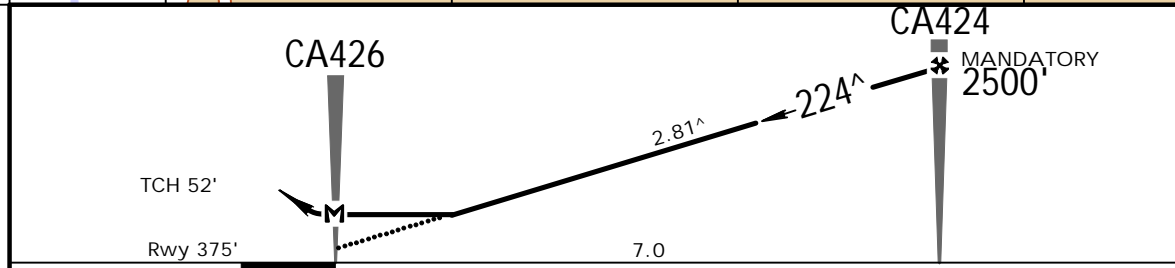
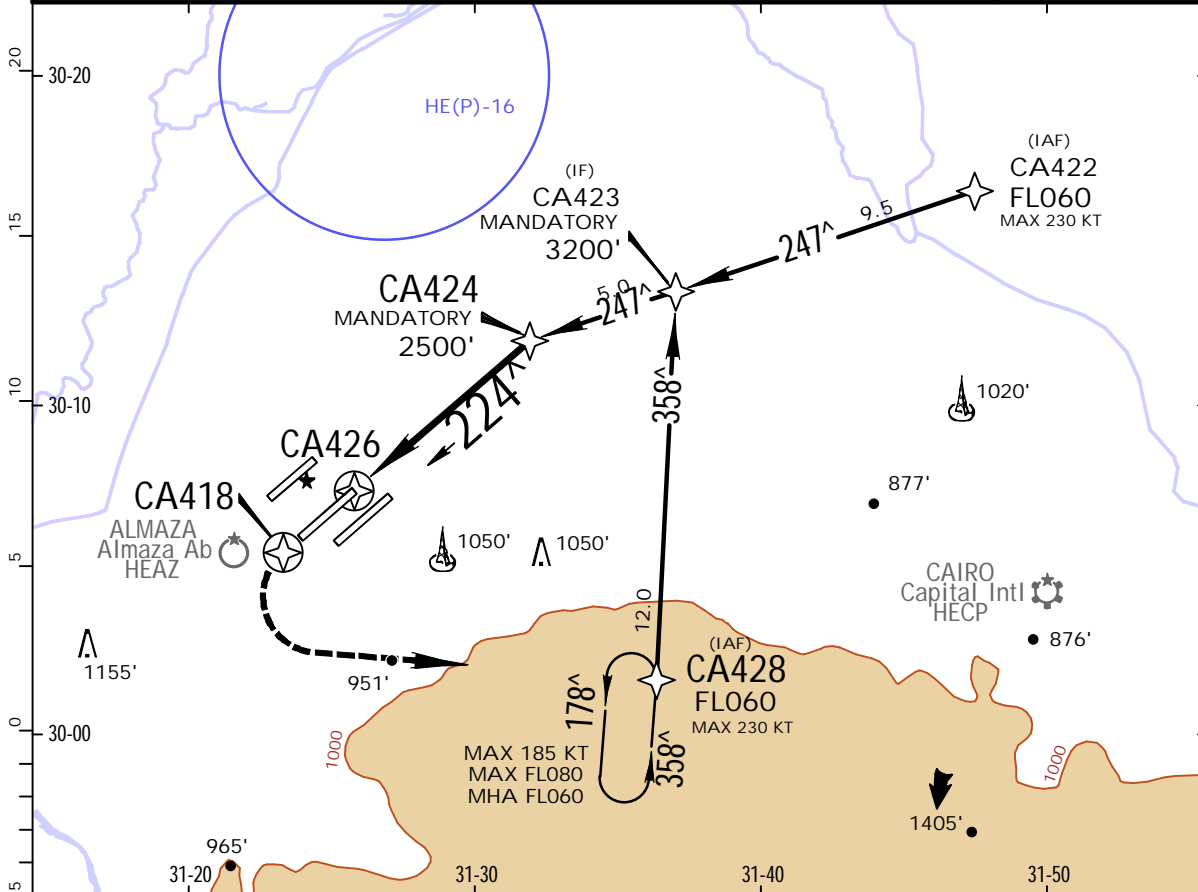
ALS out	
A	R1000m R1700m
B	
C	
D	

HECA/CAI
CAIRO INTL

JEPESEN
21 JAN 22 (12-5) .Eff.27.Jan.

CAIRO, EGYPT
RNP Rwy 23C

D-ATIS 122.6		CAIRO Approach (R) 119.050		CAIRO Tower 118.1	Ground South 120.4 North 121.9	
RNAV	Final Apch Crs 224 [^]	CA424 MANDATORY 2500' (2125')	MDA(H) 810' (435')	Apt Elev 467' Rwy 375'		
MISSED APCH: Climb STRAIGHT AHEAD to cross CA418, then turn LEFT to reach CA428 at FL060 and hold or as directed.						
Alt Set: hPa		Rwy Elev: 14 hPa	Trans level: FL060		Trans alt: 4500'	



Gnd speed-Kts	70	90	100	120	140	160	HIALS-II PAPI PAPI	CA418 ↑	
Descent Angle	2.81 [^]	348	447	497	596	696			795
MAP at CA426									

.State. STRAIGHT-IN LANDING
LNAV
MDA(H) 810' (435')
ALS out

A	R1600m	R2000m
B		
C		
D		

HECA/CAI

CAIRO INTL

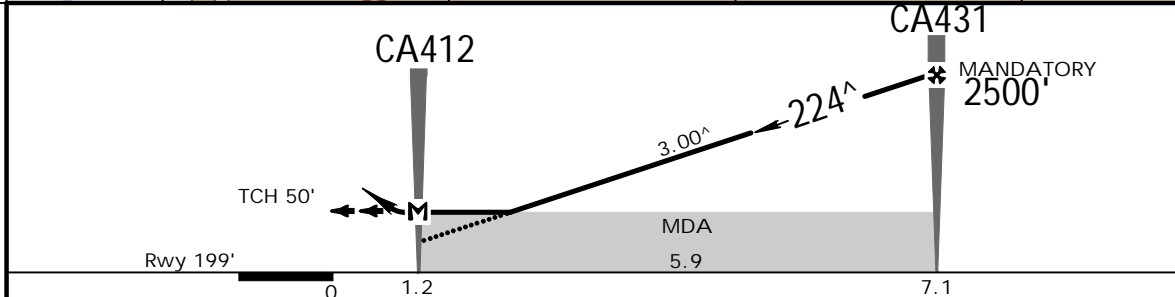
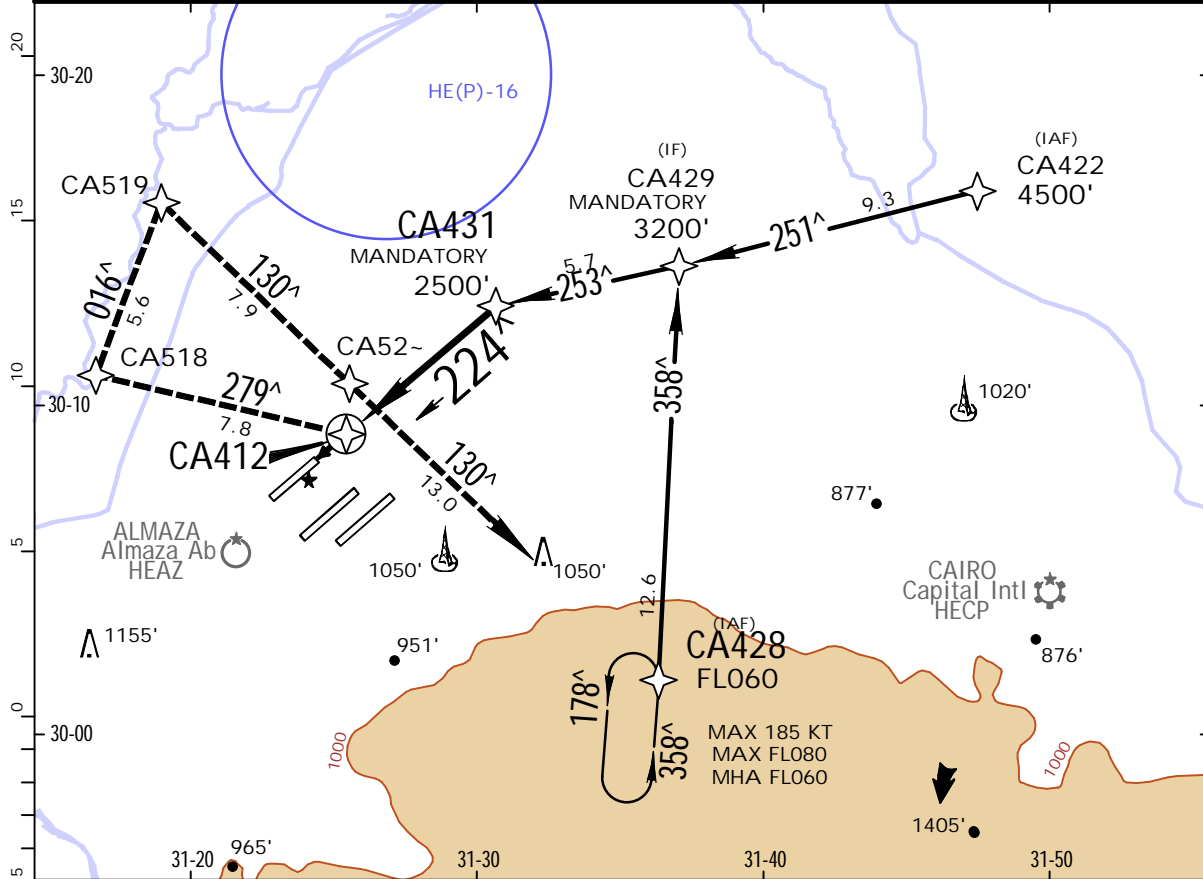


21 JAN 22 (12-6) .Eff.27.Jan.

CAIRO, EGYPT

RNP Rwy 23R

D-ATIS 122.6		CAIRO Approach (R) 119.050		CAIRO Tower 118.1		Ground South 120.4 North 121.9	
RNAV	Final Apch Crs 224 [^]	CA431 MANDATORY 2500' (2301')	MDA(H) 830' (631')	Apt Elev 467' Rwy 199'			
MISSED APCH: Climb immediate RIGHT turn on 279 [^] to CA518 at 2000' or above, then turn RIGHT to CA519 at 2800' or above, then turn RIGHT to CA52~ at 4000', then to CA428 at FLO60 and hold or as directed. MAX 185 KT.							
Alt Set: hPa		Rwy Elev: 7 hPa		Trans level: FLO60		Trans alt: 4500'	
							MSA ARP



Gnd speed-Kts	70	90	100	120	140	160	HIALS PAPI PAPI MAX 185 KT at or above 2000' on RT	CA518 279 [^]
Descent Angle	3.00 [^]	372	478	531	637	743		

MAP at CA412
 .State. STRAIGHT-IN LANDING
 LNAV
 MDA(H) 830' (631')
 ALS out

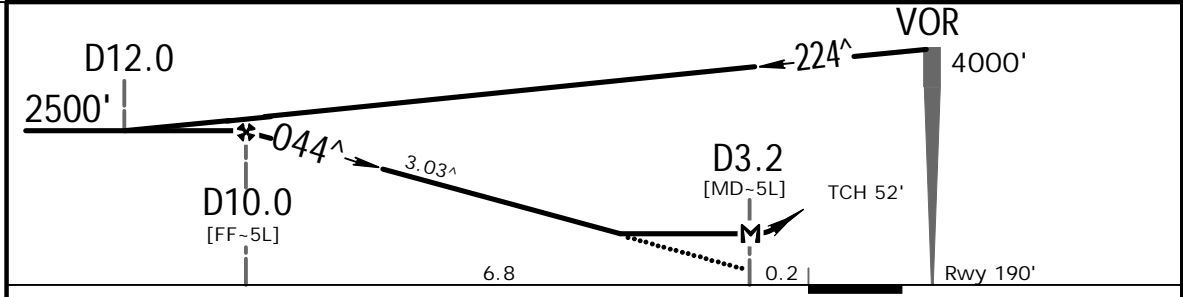
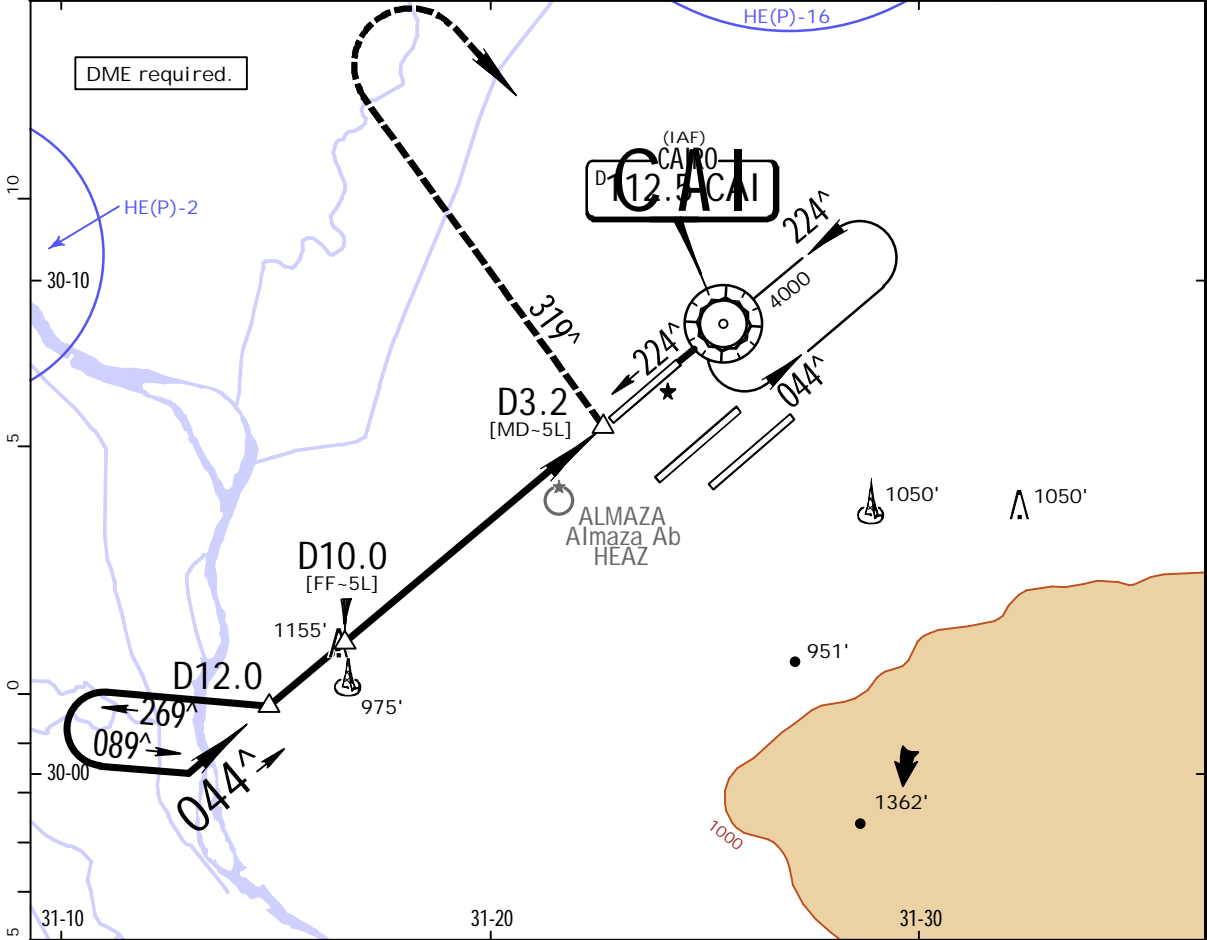
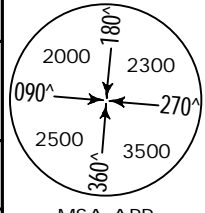
A	R2700m	R2900m
B		
C		
D		

HECA/CAI
CAIRO INTL

JEPPESSEN
21 JAN 22 (13-1). Eff. 27. Jan.

CAIRO, EGYPT
VOR Rwy 05L

D-ATIS 122.6	CAIRO Approach (R) 119.050	CAIRO Tower 118.1	South 120.4	Ground North 121.9
VOR CAI 112.5	Final Apch Crs 044 [^]	D10.0 2500' (2310')	MDA(H) 760' (570')	Apt Elev 467' Rwy 190'
MISSED APCH: Turn LEFT onto 319 [^] climbing to 2500', then turn RIGHT to VOR and hold at 4000', or as directed.				
Alt Set: hPa	Rwy Elev: 7 hPa	Trans level: FL060	Trans alt: 4500'	



Gnd speed-Kts	70	90	100	120	140	160	HIALS PAPI PAPI 2500' onto 319 [^] LT
Descent Angle	3.03 [^]	375	482	536	643	750	
MAP at D3.2							

.State.		STRAIGHT-IN LANDING	
MDA(H) 760' (570')		ALS out	
A			
B			
C	R1900m		R2600m
D			

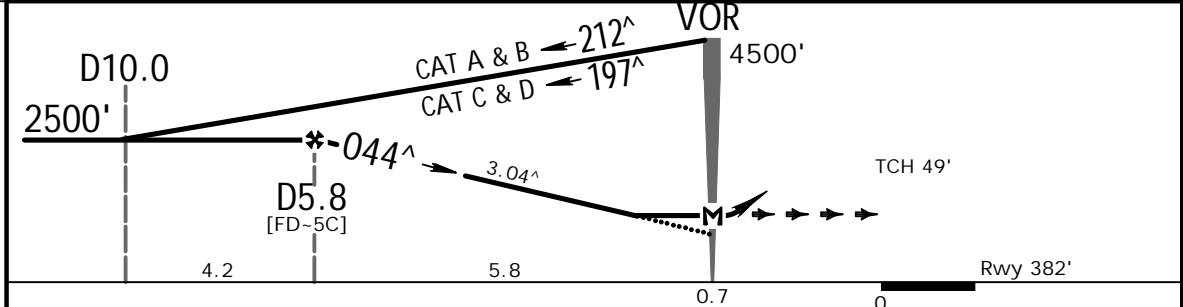
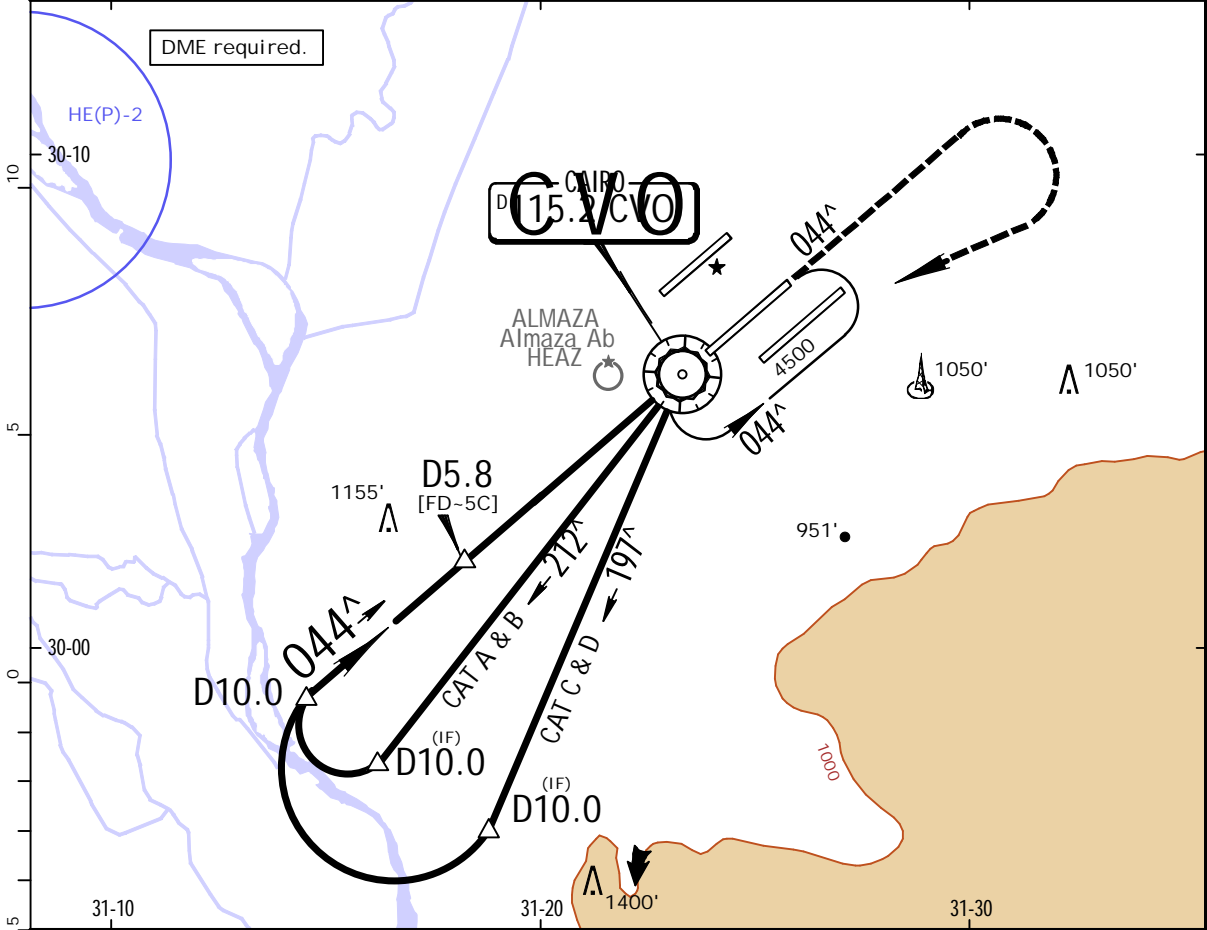
PANS OPS

HECA/CAI
CAIRO INTL

JEPPESSEN
21 JAN 22 (13-2). Eff. 27. Jan.

CAIRO, EGYPT
VOR Rwy 05C

BRIEFING STRIP™	D-ATIS 122.6	CAIRO Approach (R) 119.050	CAIRO Tower 118.1	South 120.4	Ground North 121.9	
	VOR CVO 115.2	Final Apch Crs 044 [^]	D5.8 2500' (2118')	MDA(H) 710' (328')	Apt Elev 467' Rwy 382'	
	MISSED APCH: Climb STRAIGHT AHEAD to 2000', then turn RIGHT climbing to reach VOR at 4500' and hold, or as directed.					
Alt Set: hPa		Rwy Elev: 14 hPa	Trans level: FL060	Trans alt: 4500'		MSA ARP



Gnd speed-Kts	70	90	100	120	140	160	HI ALS-II PAPI PAPI	2000' ↑
Descent Angle 3.04 [^]	376	484	538	645	753	861		
MAP at VOR								

.State.		STRAIGHT-IN LANDING	
		MDA(H) 710' (328')	
		ALS out	
A			
B			
C	R1000m		R1500m
D			

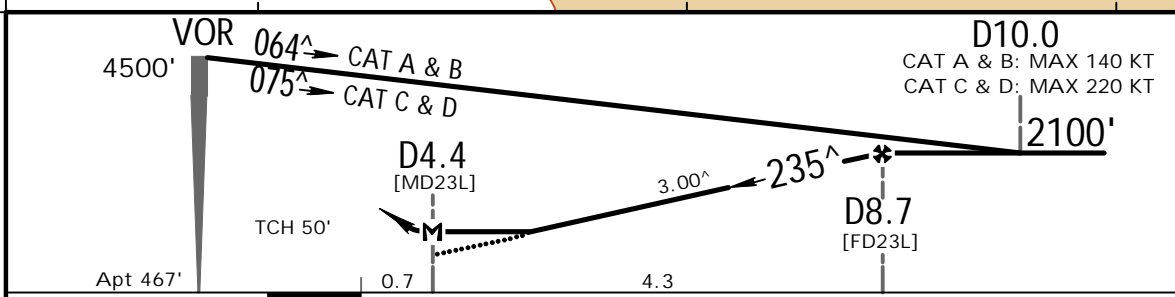
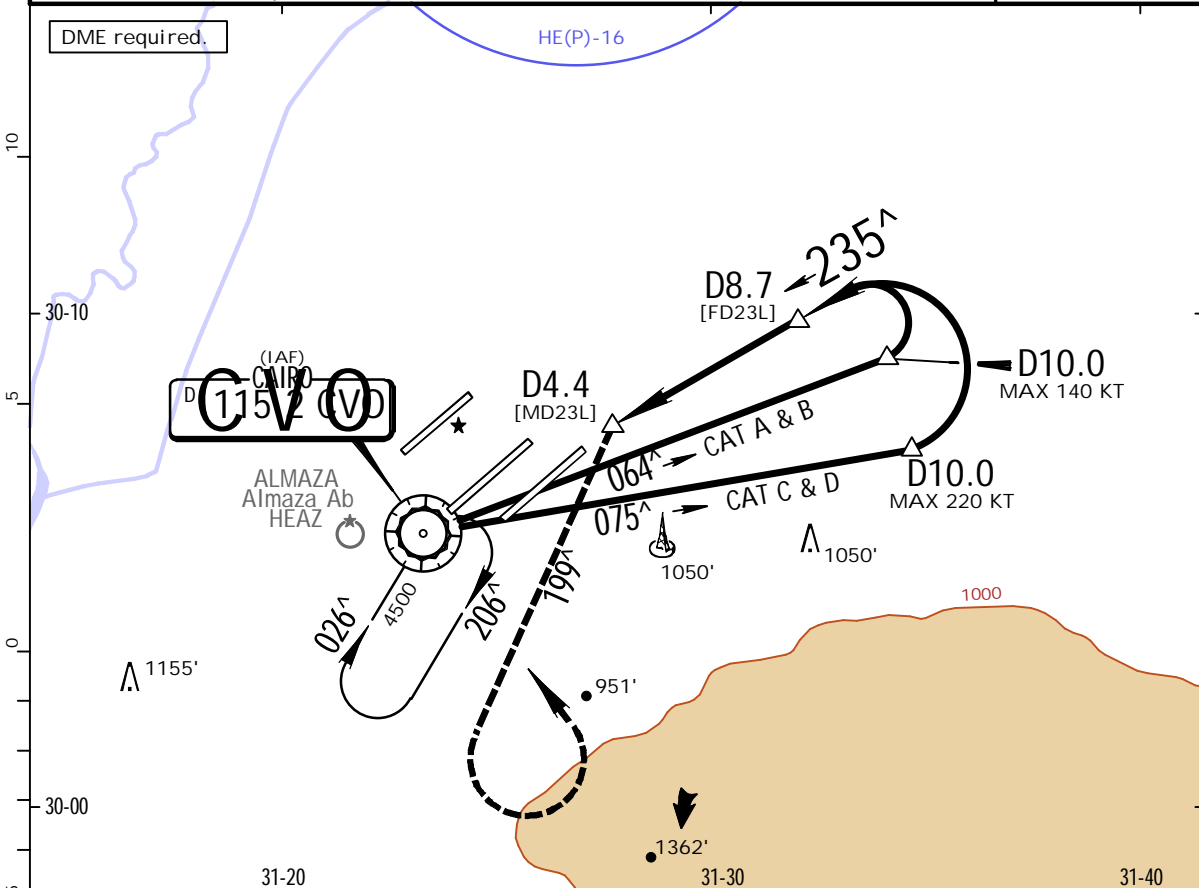
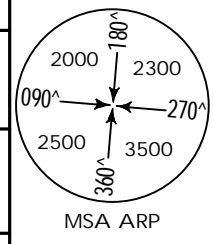
PANS OPS

HECA/CAI
CAIRO INTL

JEPPESEN
21 JAN 22 (13-3) .Eff.27.Jan.

CAIRO, EGYPT
VOR Rwy 23L

D-ATIS 122.6	CAIRO Approach (R) 119.050	CAIRO Tower 118.1	South Ground 120.4	North 121.9
VOR CVO 115.2	Final Apch Crs 235 [^]	D8.7 2100' (1633')	MDA(H) 970' (503')	Apt Elev 467'
MISSED APCH: Turn LEFT onto 199 [^] climbing at or above 2000', then turn LEFT to reach VOR at 4500' and hold, or as directed.				
Alt Set: hPa		Apt Elev: 17 hPa	Trans level: FL060	Trans alt: 4500'



Gnd speed-Kts	70	90	100	120	140	160	HIALS-II PAPI PAPI At or above 2000' onto 199 [^] LT
Descent Angle	3.00 [^]	372	478	531	637	743	
MAP at D4.4							

State. STRAIGHT-IN LANDING
MDA(H) 970' (503')
ALS out

A	R1600m	R2400m
B		
C		
D		

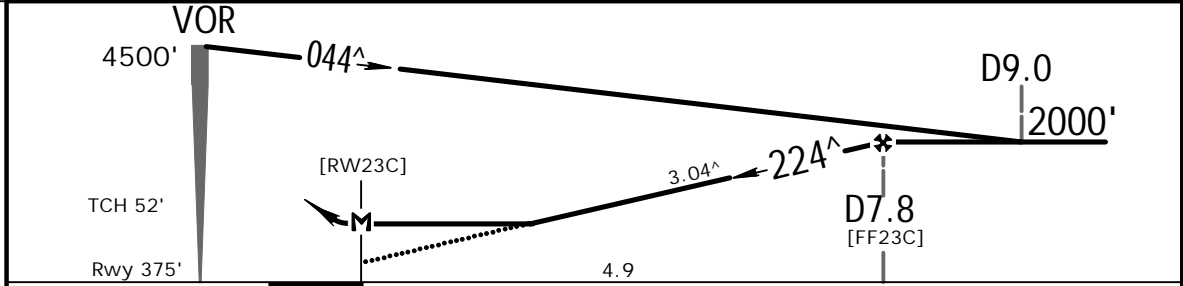
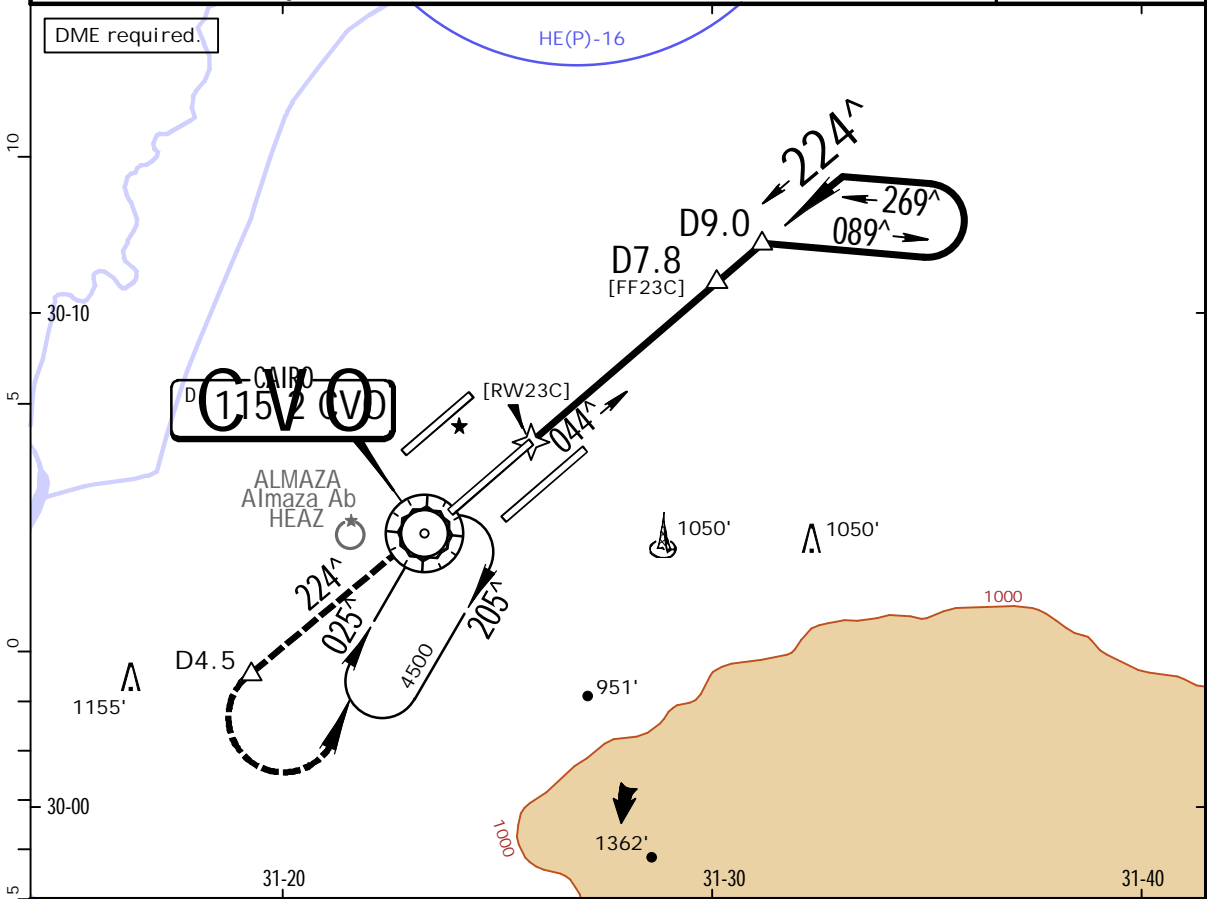
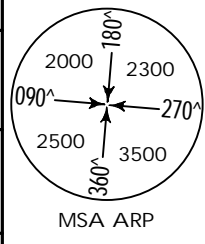
PANS OPS

HECA/CAI
CAIRO INTL

JEPPESEN
21 JAN 22 (13-4) .Eff.27.Jan.

CAIRO, EGYPT
VOR Rwy 23C

D-ATIS 122.6	CAIRO Approach (R) 119.050	CAIRO Tower 118.1	South 120.4	Ground North 121.9
VOR CVO 115.2	Final Apch Crs 224 [^]	D7.8 2000' (1625')	MDA(H) 760' (385')	Apt Elev 467' Rwy 375'
MISSED APCH: Climb STRAIGHT AHEAD on 224 [^] to 2500'. Not later than D4.5 turn LEFT to reach VOR at 4500' and hold, or as directed.				
Alt Set: hPa		Rwy Elev: 14 hPa	Trans level: FL060	Trans alt: 4500'



Gnd speed-Kts	70	90	100	120	140	160	HIALS-II PAPI 2500' whichever is earlier D4.5
Descent Angle 3.04 [^]	376	484	538	645	753	861	
D7.8 to MAP	4.9	4:12	3:16	2:56	2:27	2:06	

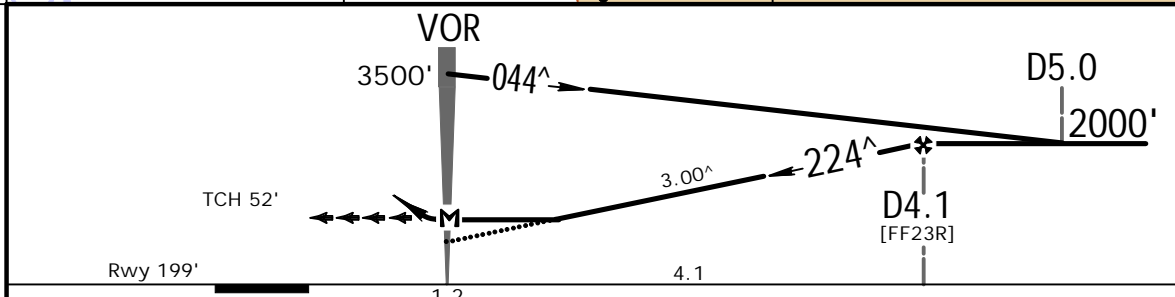
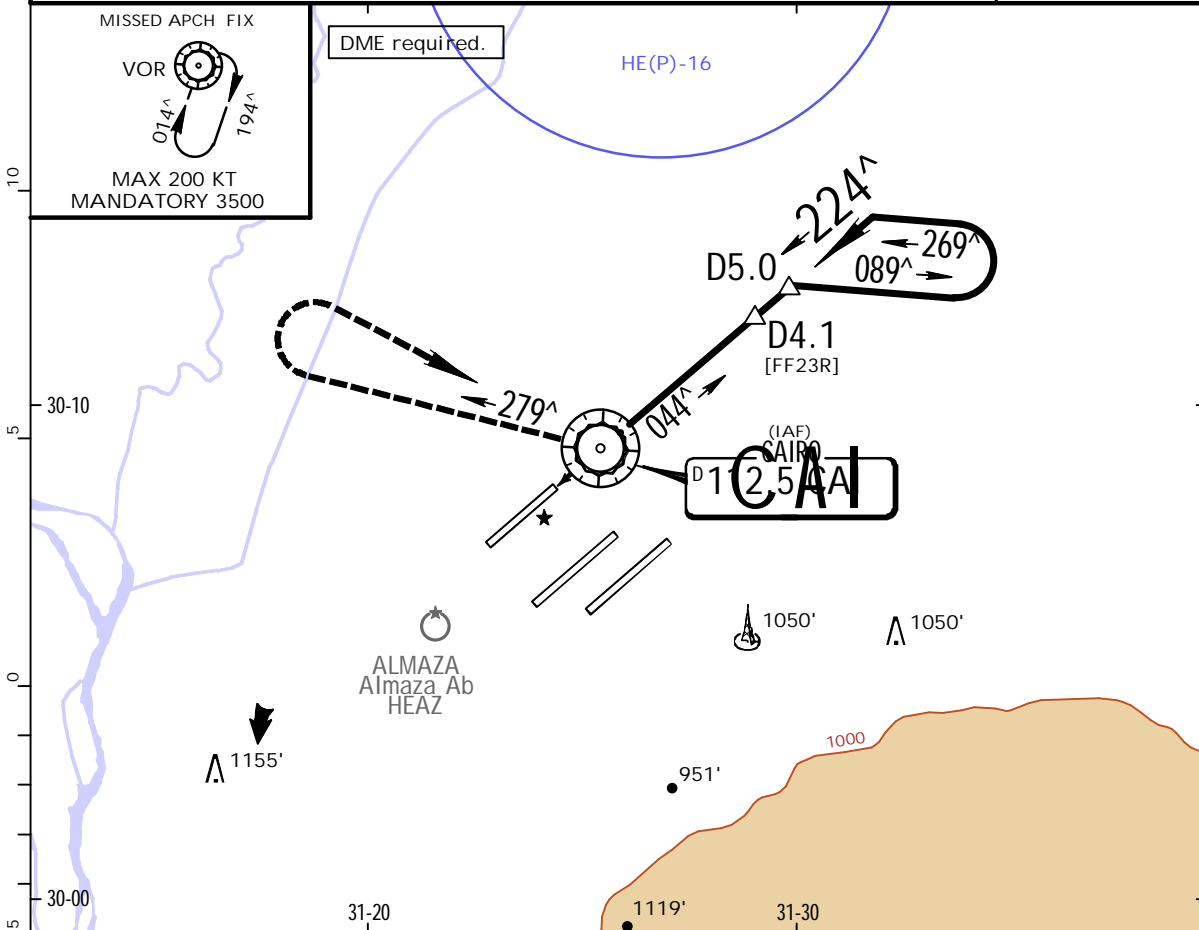
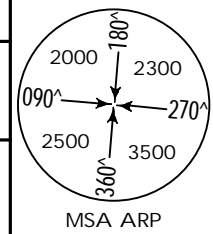
.State.		STRAIGHT-IN LANDING	
MDA(H) 760' (385')		ALS out	
A	R1400m	R1800m	
B			
C			
D			

HECA/CAI
CAIRO INTL

JEPPESSEN
21 JAN 22 (13-5) .Eff.27.Jan.

CAIRO, EGYPT
VOR Rwy 23R

D-ATIS 122.6	CAIRO Approach (R) 119.050	CAIRO Tower 118.1	South Ground 120.4	North 121.9
VOR CAI 112.5	Final Apch Crs 224 [^]	D4.1 2000' (1801')	MDA(H) 780' (581')	Apt Elev 467' Rwy 199'
MISSED APCH: Turn RIGHT onto track 279 [^] climbing to 2000', then turn RIGHT to reach VOR at 3500' and hold, or as directed. MAX 220 KT.				
Alt Set: hPa	Rwy Elev: 7 hPa	Trans level: FL060	Trans alt: 4500'	



Gnd speed-Kts	70	90	100	120	140	160	HIALS PAPI PAPI MAX 220 KT 2000' on 279 [^] RT
Descent Angle 3.00 [^]	372	478	531	637	743	849	
MAP at VOR							

.State.		STRAIGHT-IN LANDING	
MDA(H) 780' (581')		ALS out	
A			
B			
C	R2500m		R2700m
D			

Chart changes since cycle 06-2023

ADD = added chart, REV = revised chart, DEL = deleted chart.

ACT PROCEDURE IDENT

INDEX

REV DATE

EFF DATE

CAIRO, (CAIRO INTL - HECA)

TERMINAL CHART CHANGE NOTICES

Chart Change Notices for Airport HECA

Type: Terminal

Effectivity: Temporary

Begin Date: Immediately

End Date: 20230401

RNAV (GNSS) approach should not be planned at Cairo Intl airport due to GPS jamming within 10NM from Cairo ARP (based on SUP 038-22).

Type: Terminal

Effectivity: Temporary

Begin Date: Immediately

End Date: 20230220

Unauthorized laser beams have been observed in AD vicinity. Pilots should report to ATC immediately and avoid any eye contact (per SUP 035-22).

Type: Terminal

Effectivity: Temporary

Begin Date: Immediately

End Date: 20230402

D-ATIS (data link) u/s. (based on SUP 039-22).