

List of pages in this Trip Kit

Trip Kit Index

Airport Information For EGYPT

Terminal Charts For EGYPT

Revision Letter For Cycle 07-2023

Change Notices

Notebook

General Information

Location: MOUNT PLEASANT FLK
ICAO/IATA: EGYP / MPN
Lat/Long: S51° 49.36', W058° 26.76'
Elevation: 233 ft

Airport Use: Military
Daylight Savings: Not Observed
UTC Conversion: +3:00 = UTC
Magnetic Variation: 3.0° E

Fuel Types: Jet A-1, Jet 5
Customs: Yes
Airport Type: IFR
Landing Fee: No
Control Tower: Yes
Jet Start Unit: Yes
LLWS Alert: No
Beacon: No

Sunrise: 1040 Z
Sunset: 2107 Z

Runway Information

Runway: 05
Length x Width: 5003 ft x 75 ft
Surface Type: asphalt
TDZ-Elev: 207 ft
Lighting: Edge, ALS
Stopway: 75 ft

Runway: 10
Length x Width: 8494 ft x 148 ft
Surface Type: asphalt
TDZ-Elev: 233 ft
Lighting: Edge, ALS
Stopway: 591 ft

Runway: 23
Length x Width: 5003 ft x 75 ft
Surface Type: asphalt
TDZ-Elev: 201 ft
Lighting: Edge, ALS, REIL
Stopway: 591 ft

Runway: 28
Length x Width: 8494 ft x 148 ft
Surface Type: asphalt
TDZ-Elev: 217 ft
Lighting: Edge, ALS, REIL
Stopway: 594 ft

Communication Information

ATIS: 128.550
Mount Pleasant Tower: 133.350
Mount Pleasant Tower: 35.680 Military
Mount Pleasant Ground: 130.300
Mount Pleasant Ground: 28.050 Military
Mount Pleasant Approach: 118.500
Mount Pleasant Approach: 25.730 Military
Mount Pleasant Talkdown Radar: 31.770 Military
Mount Pleasant Talkdown Radar: 125.950
Island Radar: 131.500
Island Radar: 132.500

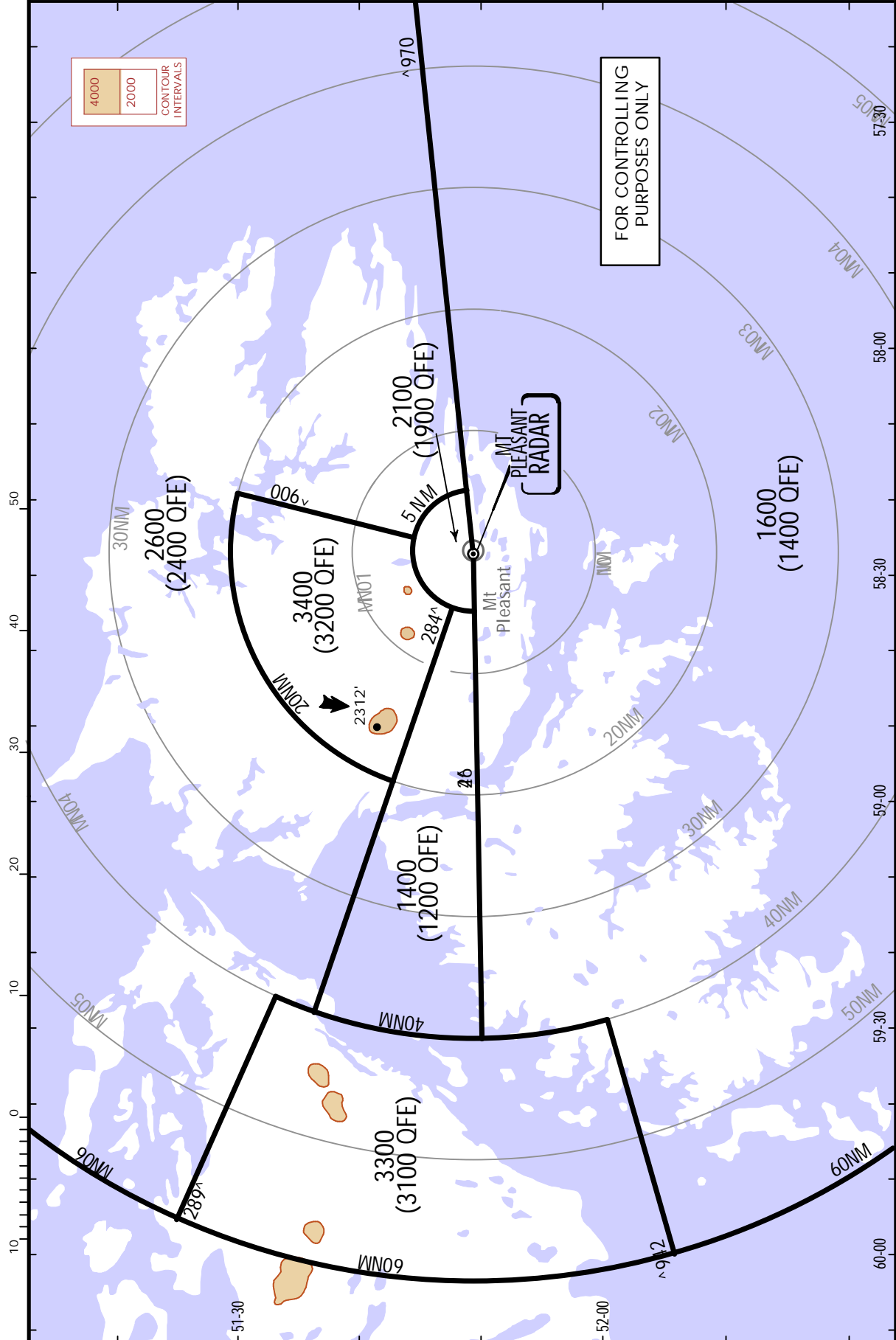
EGYP/MPN MT PLEASANT

23 JUN 17 **10-1R**

MT PLEASANT, FALKLAND IS .RADAR.MINIMUM.ALTITUDES.

*ISLAND Radar Initial Contact Freq 131.5 132.5	Apt Elev 233'	Alt Set: hPa Trans level: By ATC Trans alt: 5000' QFE Datum is 191'.
---	-------------------------	--

For UHF see MIL-101 listing



CHANGES: Sector revised.

EGYP/MPN
MT PLEASANT

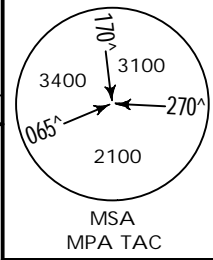
JEPPESEN MT PLEASANT, FALKLAND IS
1 OCT 21 10-3 .Eff.7.Oct.

.SID.

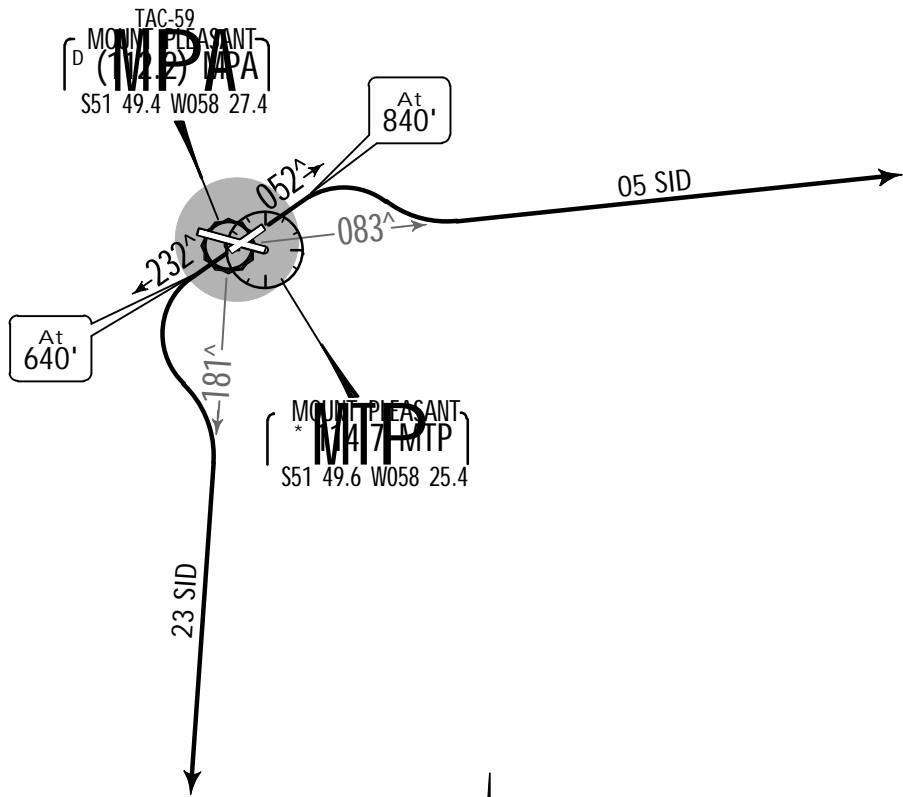
Apt Elev
233'

Trans level: By ATC Trans alt: 5000'
1. SIDs include minimum noise routings.
2. EXPECT close-in obstacles.

For UHF see MIL-101 listing



05 SID, 23 SID
DEPARTURES
(RWYS 05, 23)



SID	RWY	ROUTING
05 SID	05	Climb on runway track to 840', turn RIGHT, intercept MPA R-083 (MTP R-082), continue climb to 3740'. SID terminates when passing 3740'.
23 SID	23	Climb on runway track to 640', turn LEFT, intercept MPA R-181 (MTP R-183), continue climb to 3740. SID terminates when passing 3740'.

EGYP/MPN
MT PLEASANT

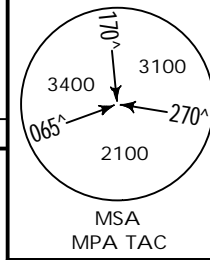
JEPPESEN MT PLEASANT, FALKLAND IS
1 OCT 21 (10-3A) .Eff.7.Oct.

.SID.

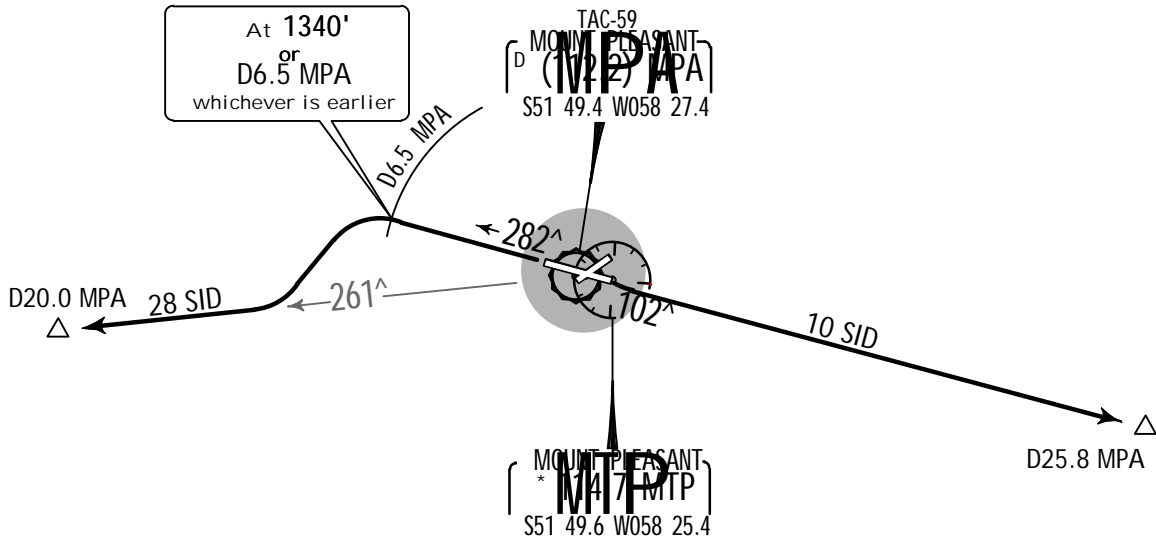
Apt Elev
233'

Trans level: By ATC Trans alt: 5000'
1. 10 SID: TACAN Azimuth required.
2. SIDs include minimum noise routings.
3. EXPECT close-in obstacles.

For UHF see MIL-101 listing



10 SID, 28 SID
DEPARTURES
(RWYS 10, 28)



SID	RWY	ROUTING
10 SID	10	Climb on MPA R-102 to 5240'. SID ends when passing 5240' or D25.8 MPA, whichever is earlier.
28 SID	28	Climb on runway track to 1340' or D6.5 MPA, whichever is earlier, turn LEFT, intercept MPA R-261 (MTP R-261), continue climb to 3740' or higher as directed by ATC. SID terminates at D20.0 MPA.

EGYP/MPN

Apt Elev 233
S51 49.4 W058 26.8

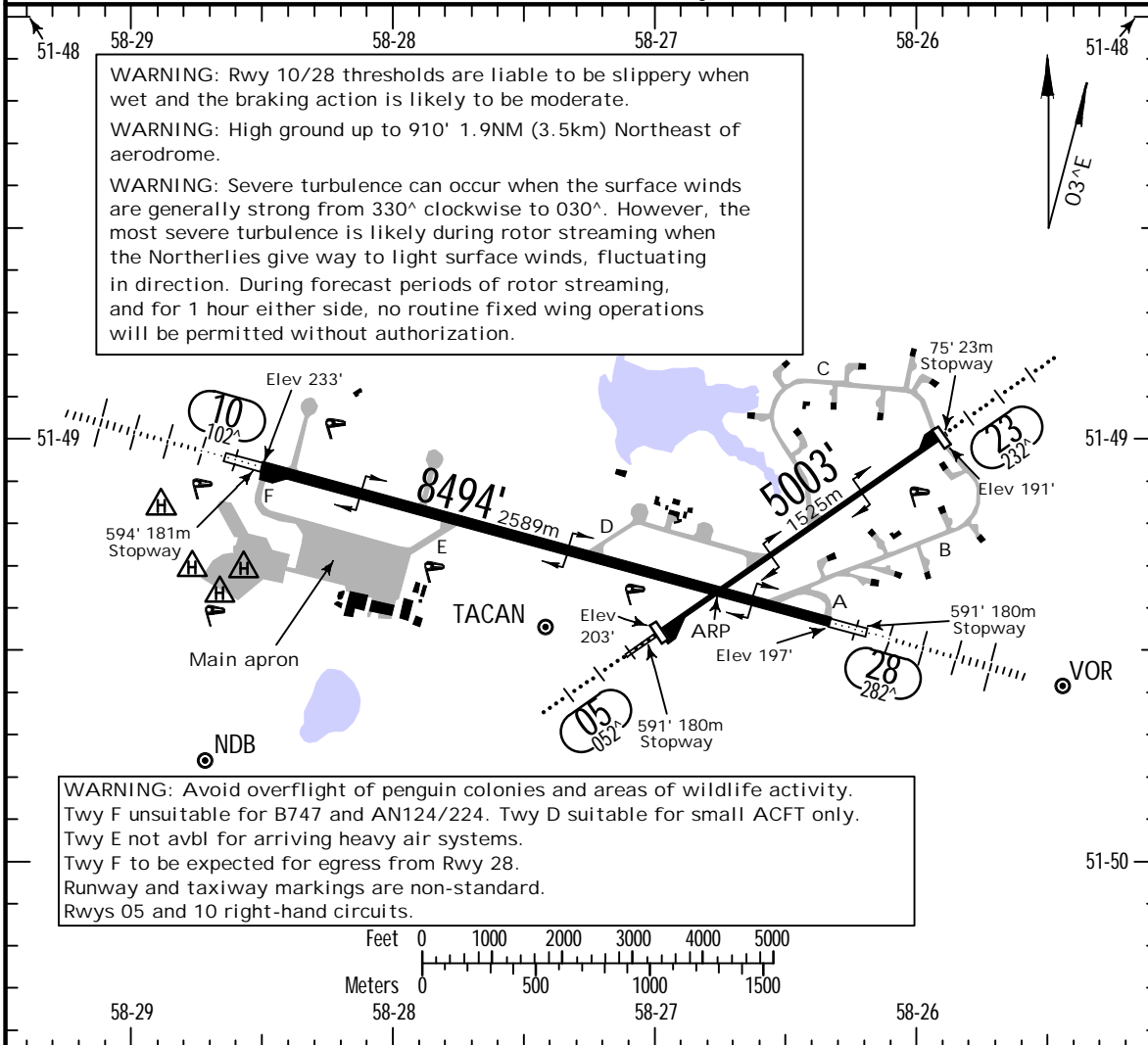
JEPPESEN MT PLEASANT, FALKLAND IS

5 NOV 21 10-9

MT PLEASANT

*ATIS 128.550	*MT PLEASANT Ground 130.3	*Tower 133.350
------------------	------------------------------	-------------------

For UHF see MIL-101 listing.



ADDITIONAL RUNWAY INFORMATION

RWY					USABLE LENGTHS		TAKE-OFF	WIDTH
	HIRL (30m)	HIALS	PAPI (angle 3.0°)	SFL	REIL	PAPI (angle 3.0°)		
05								75'
23								23m
10								148'
28							7583' 2311m	45m

.Standard.

TAKE-OFF

Low Visibility Take-off		
Day: RL & RCLM Night: RL	Day: RL or RCLM Night: RL	Adequate vis ref (Day only)
A		
B		
C	RVR 300m	400m
D		500m

EGYP/MPN MT PLEASANT

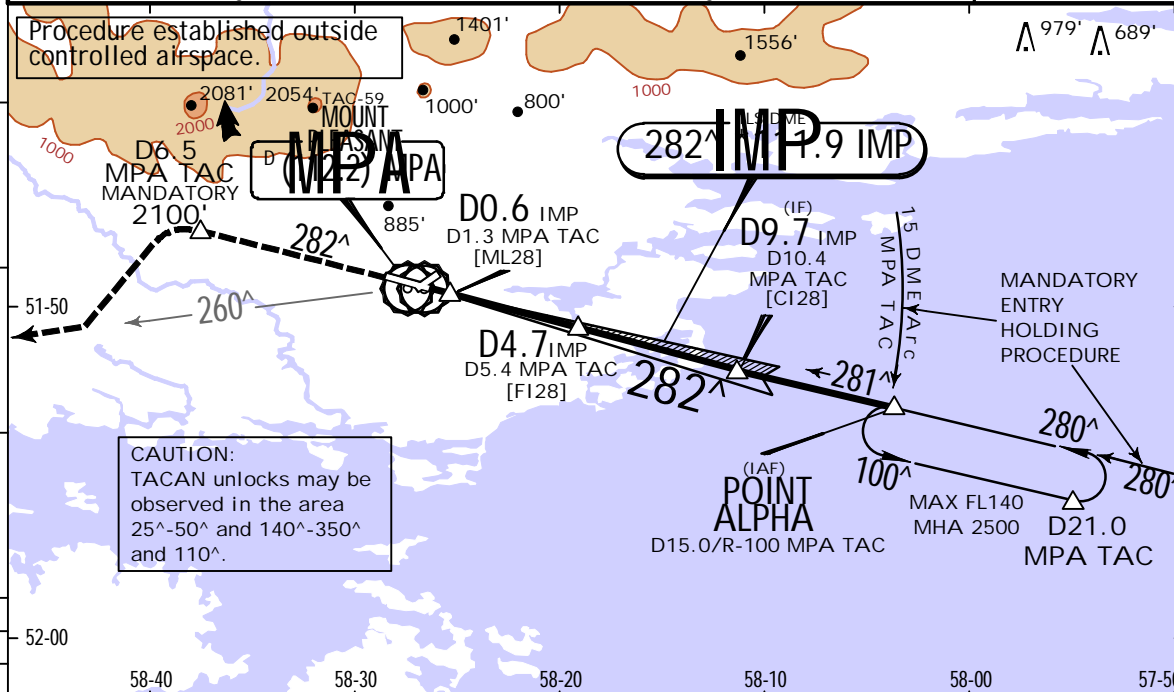
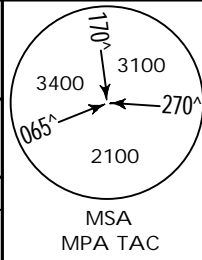
JEPPESEN MT PLEASANT
5 NOV 21 **11-1**

FALKLAND IS
TACAN ILS DME Rwy 28

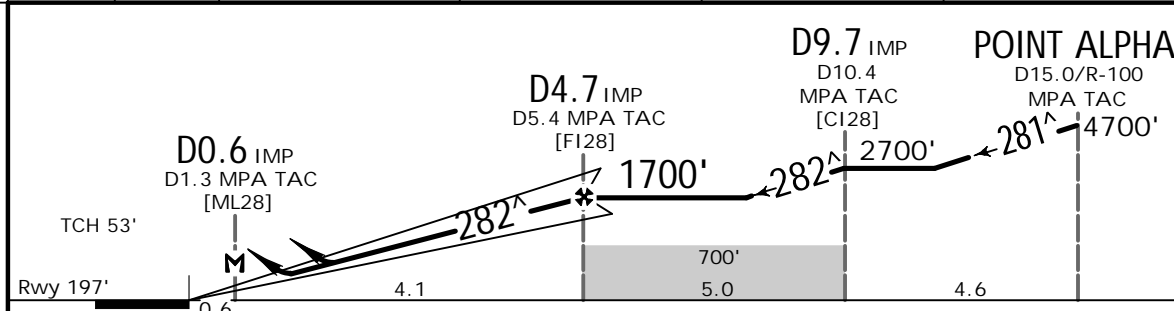
*ATIS 128.550	*MT PLEASANT Approach 118.5	ISLAND Radar Initial Contact Freq 131.5 132.5	*MT PLEASANT Tower 133.350	*Ground 130.3
------------------	--------------------------------	---	-------------------------------	------------------

BRIEFING STRIP™

For UHF see MIL-101 listing.				
LOC IMP *111.9	Final Apch Crs 282^	D4.7 IMP 1700' (1503')	ILS DA(H) Refer to Minimums	Apt Elev 233' Rwy 197'
MISSED APCH: Climb on RWY track 282^ to 2100' to D6.5 MPA TAC, then turn LEFT to intercept R-260 MPA TAC. Do not turn before MAP.				
Alt Set: hPa Rwy Elev: 7 hPa Trans level: By ATC Trans alt: 5000'				
1. DME or RADAR monitoring mandatory. 2. Aircraft not equipped with TACAN may be vectored to LOC by APPROACH. 3. ILS DME reads zero at rwy 28 threshold.				



LOC (GS out)	IMP DME	1.0	2.0	3.0	4.0
	ALTITUDE	580'	890'	1210'	1530'



Gnd speed-Kts	70	90	100	120	140	160
ILS GS or LOC Descent angle	3.00^	372	478	531	637	849
MAP at D0.6 IMP/D1.3 MPA TAC						

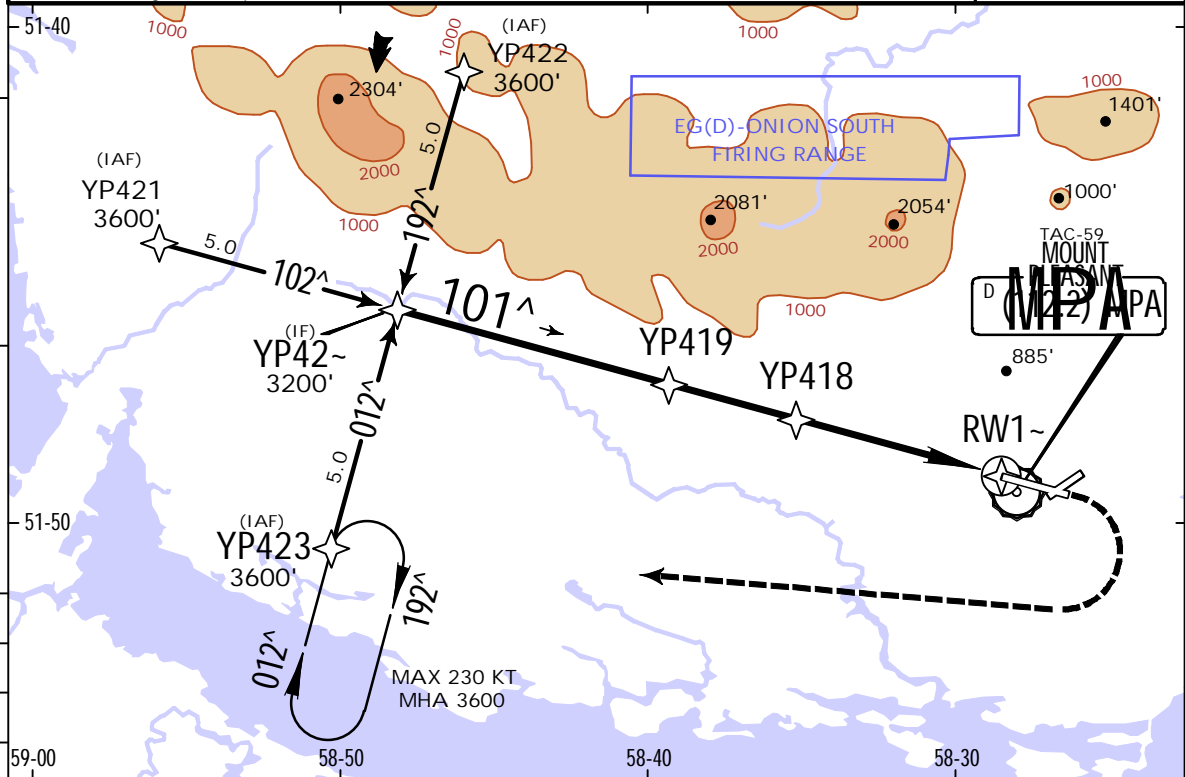
.Standard.				STRAIGHT-IN LANDING RWY 28			CIRCLE-TO-LAND		
ILS DA(H) ABCD: 397' (200') E: 447' (250')		LOC (GS out) CDFA 510' (313')		Prohibited North of rwy 10/28 and West of rwy 05/23					
FULL		ALS out		ALS out		Max Kts			
A						100	670' (437')	1500m	
B				800m		135	780' (547')	1600m	
C	800m				1400m	180	880' (647')	2400m	
D				1200m		205	940' (707')	3600m	
E		1300m				E	1030' (797')	3600m	

EGYP/MPN

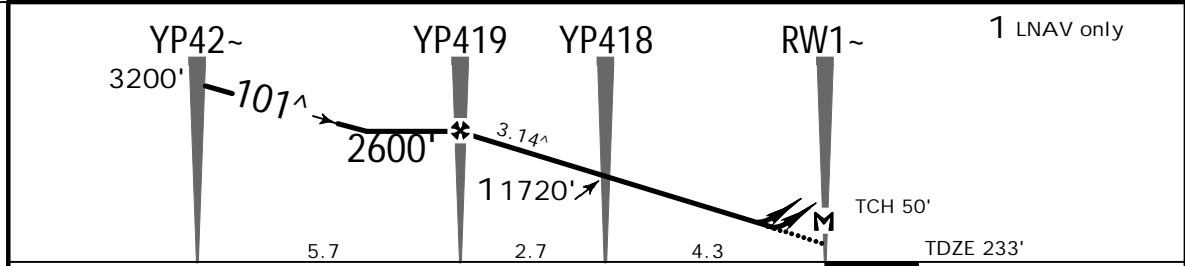
MT PLEASANT

JEPESEN MT PLEASANT, FALKLAND IS
 3 SEP 21 (12-1).Eff.9.Sep.
 RNAV (GNSS) Rwy 10

* ATIS 128.550	* MT PLEASANT Approach 118.5	ISLAND Radar Initial Contact Freq 131.5 132.5	* MT PLEASANT Tower 133.350	* Ground 130.3
For UHF see MIL-101 listing.				
RNAV	Final Apch Crs 101 [^]	YP419 2600' (2367')	LNAV/VNAV DA(H) 513' (280')	Apt Elev 233' TDZE 233'
MISSED APCH: Climb to 2000', then climbing turn RIGHT to 3600' direct to YP423 and hold.				
Alt Set: hPa TDZ Elev: 9 hPa Trans level: By ATC Trans alt: 5000'				
1. CAUTION: High ground in close proximity to final approach. 2. Uncompensated Baro-VNAV systems, procedure not authorized below -15°C.				
MSA MPA TAC				



DIST to RW1~	6.0	5.0	4.0	3.0	2.0
ALTITUDE	2270'	1940'	1610'	1280'	950'



Gnd speed-Kts	70	90	100	120	140	160		2000'	3600'	YP423
Descent Angle	3.14 [^]	389	500	556	667	889		↑	RT	
MAP at RW1~										
YP419 to MAP	7.0	6:00	4:40	4:12	3:30	3:00		2:38		

Standard.				STRAIGHT-IN LANDING RWY 10				CIRCLE-TO-LAND			
LNAV/VNAV				LNAV CDFA				Prohibited North of rwy 10/28 and West of rwy 05/23			
DA(H) 513' (280')				DA/MDA(H) 600' (367')							
ALS out				ALS out							
A					2400m		Max Kts	MDA(H)		VIS	
B	900m		1700m		1500m		100	640' (407')		1 1900m	
C					2600m		135	740' (507')		2400m	
D							180	840' (607')		3200m	
							205	940' (707')		3800m	
1 or higher straight-in minimums											

EGYP/MPN

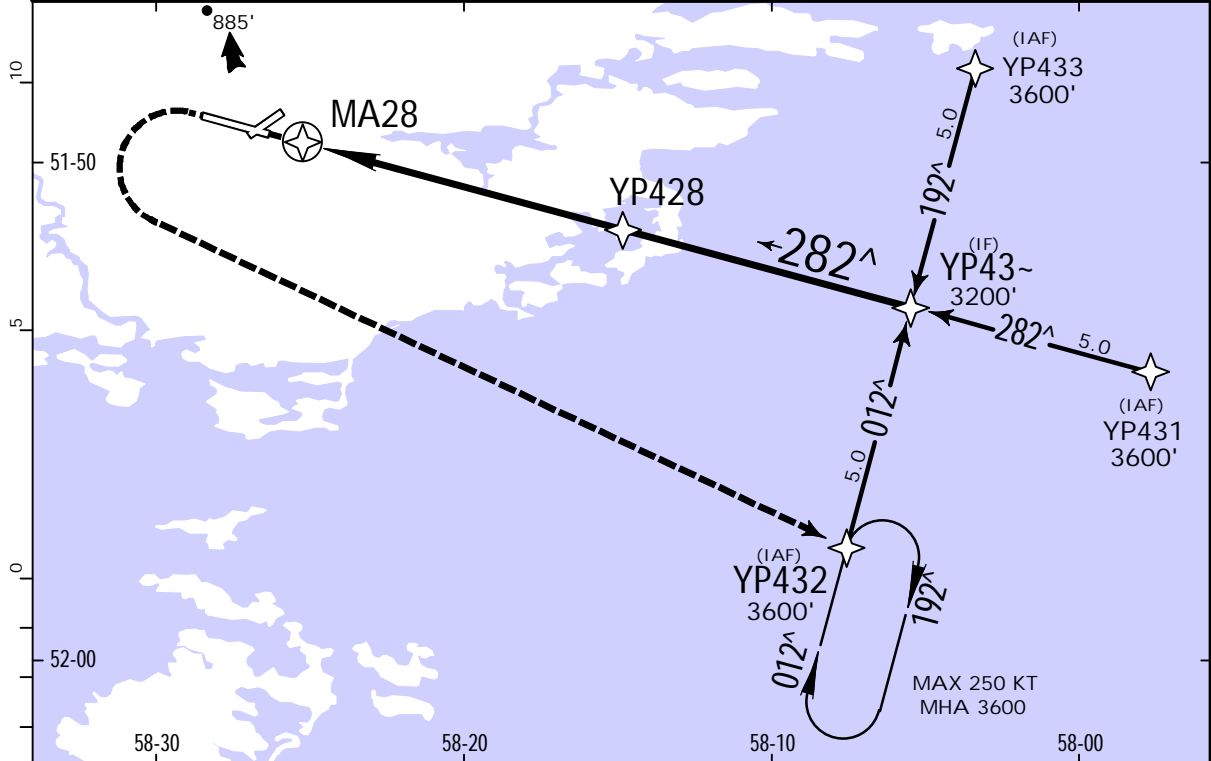
MT PLEASANT

JEPPESEN
3 SEP 21 **12-2** .Eff.9.Sep.

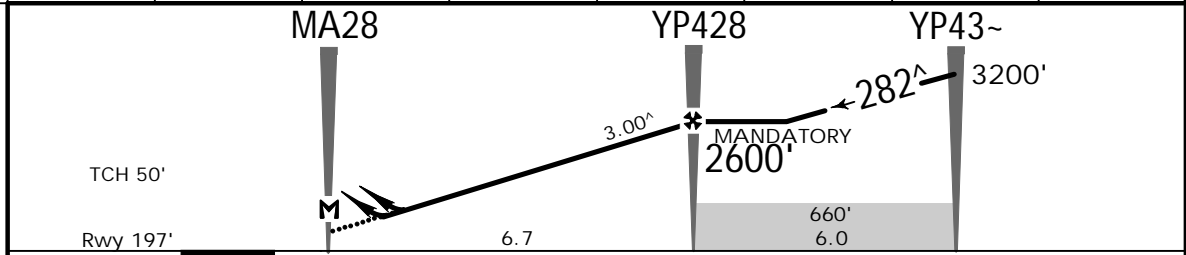
MT PLEASANT, FALKLAND IS

RNP Rwy 28

* ATIS 128.550	* MT PLEASANT Approach 118.5	ISLAND Radar Initial Contact Freq 131.5 132.5	* MT PLEASANT Tower 133.350	* Ground 130.3	
For UHF see MIL-101 listing.					
RNAV	Final Apch Crs 282[^]	YP428 MANDATORY 2600' (2403')	LNAV/VNAV DA(H) Refer to Minimums	Apt Elev 233' Rwy 197'	
MISSED APCH: Climb on track 282 [^] to 700', then climbing LEFT turn to 3600' direct to YP432 and hold. Do not turn before MAP.				<p>MSA ARP</p>	
RNP Apch	Alt Set: hPa	Rwy Elev: 7 hPa	Trans level: By ATC		Trans alt: 5000'
1. When local altimeter not received, Baro-VNAV not authorized. 2. For uncompensated LNAV-VNAV systems, procedure not authorized below -5°C. 3. Initial approach MAX 240 KT.					



DIST to THR	1.0	2.0	3.0	4.0	5.0	6.0	7.0
ALTITUDE	570'	880'	1200'	1520'	1840'	2160'	2480'



Gnd speed-Kts	70	90	100	120	140	160	HIALS REIL PAPI	700' ↑	3600' ← LT	YP432
Descent Angle 3.00 [^]	372	478	531	637	743	849				
MAP at MA28										
YP428 to MAP	6.7	5:45	4:28	3:21	2:52	2:31				

Standard.						STRAIGHT-IN LANDING RWY 28			CIRCLE-TO-LAND		
LNAV/VNAV			LNAV/VNAV			LNAV			Prohibited North of rwy 10/28 and West of rwy 05/23		
MACG min 5.0%			DA(H)			DA/MDA(H)			CDEA		
ABC: 447' (250')			A: 637' (440') C: 667' (470')			690' (493')					
D: 477' (280')			B: 647' (450') D: 687' (490')								
ALS out			ALS out			ALS out			Max Kts		
A	800m	1300m	1300m		2000m		1500m	2300m	720' (487')		2300m
B			1400m		2100m				740' (507')		
C			1500m		2200m				840' (607')		
D					2300m				940' (707')		
								MDA(H)		VIS	

EGYP/MPN
MT PLEASANT

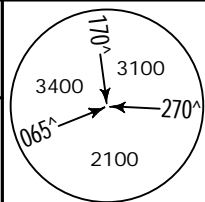
1 OCT 21
Eff. 7 Oct. 13-1 CAT A & B

JEPPESEN MT PLEASANT, FALKLAND IS
VOR DME Rwy 05

*ATIS 128.550	*MT PLEASANT Approach 118.5	ISLAND Radar Initial Contact Freq 131.5 132.5	*MT PLEASANT Tower 133.350	*Ground 130.3
------------------	--------------------------------	---	-------------------------------	------------------

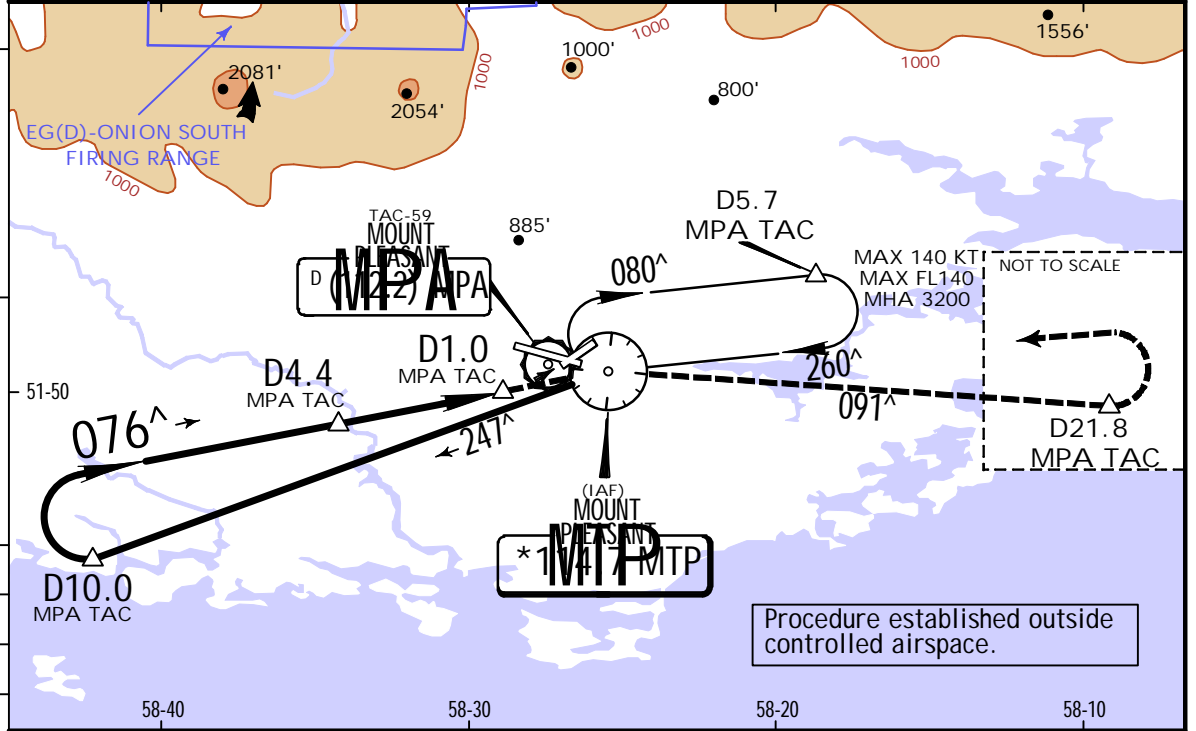
BRIEFING STRIP™

For UHF see MIL-101 listing.				
VOR MTP *114.7	Final Apch Crs 076^	D4.4 MPA TAC 1710' (1507')	MDA(H) 650' (447')	Apt Elev 233' Rwy 203'

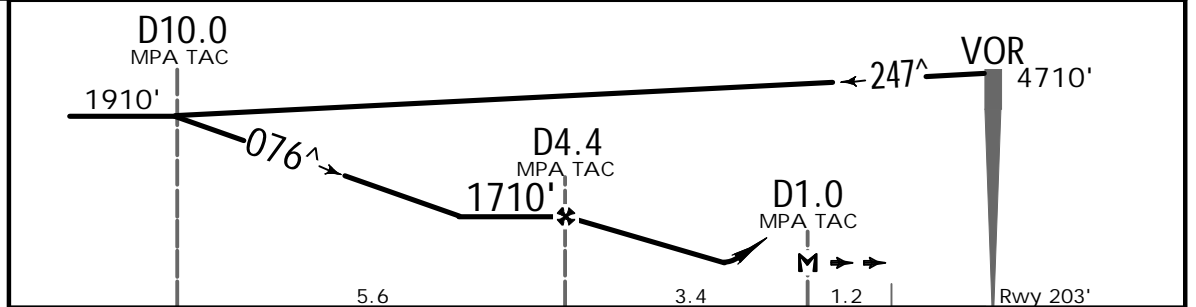


MISSED APCH: Climb to MTP VOR, then turn RIGHT to R-091 MTP VOR climbing to 3710' or D21.8 MPA TAC/R-091 MTP VOR, whichever is earlier, then turn LEFT to join holding at 3710'. Do not turn before MAP.

Alt Set: hPa Rwy Elev: 7 hPa Trans level: By ATC Trans alt: 5000'
1. DME mandatory. 2. Final approach track offset 24^ from runway centerline.



MPA TAC	4.0	3.0	2.0
ALTITUDE	1630'	1310'	990'



Gnd speed-Kts	70	90	100	120	140	160	HIALS PAPI PAPI	MTP 114.7
Descent Angle 3.00^	372	478	531	637	743	849		
MAP at D1.0 MPA TAC								

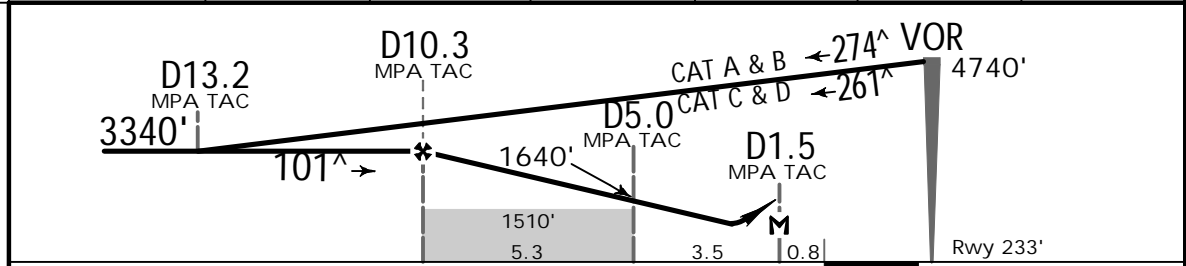
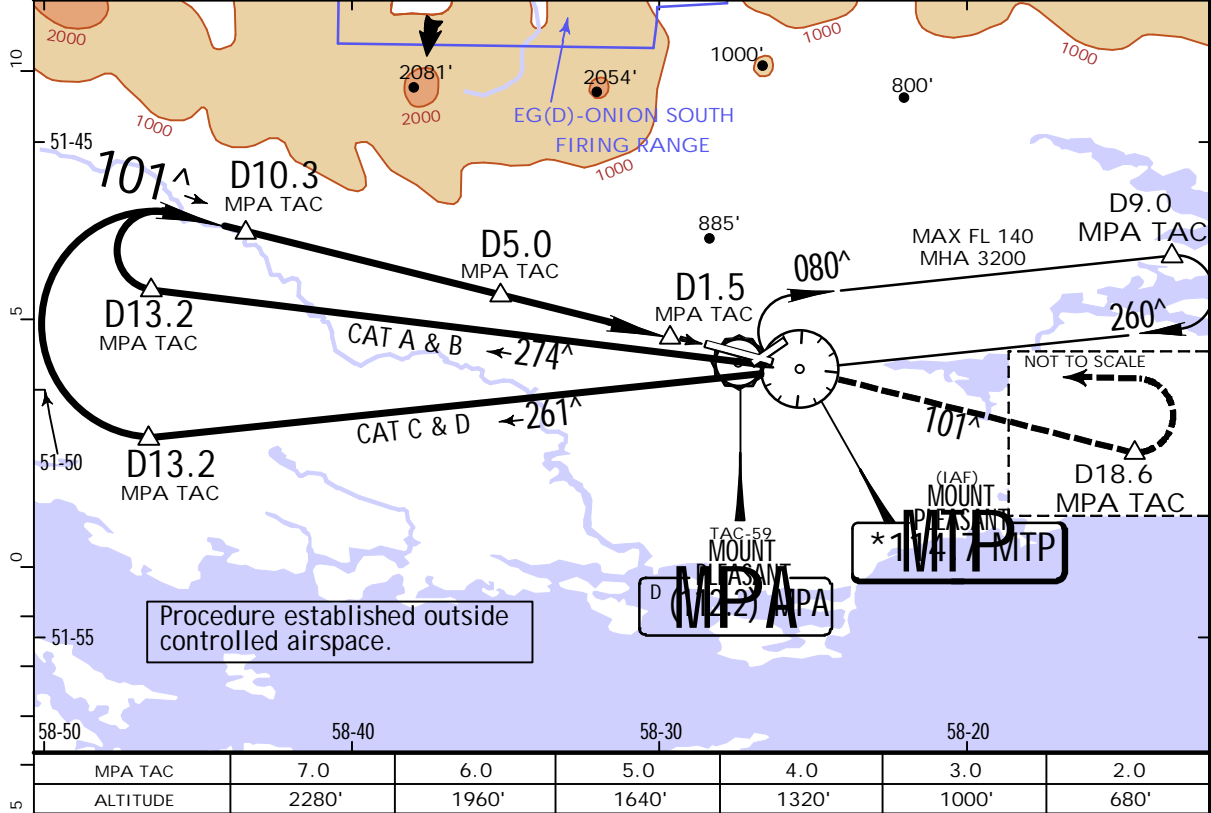
Standard. STRAIGHT-IN LANDING RWY 05		CIRCLE-TO-LAND	
CDFA MDA(H) 650' (447')		Prohibited North of rwy 10/28 and West of rwy 05/23	
ALS out		Max Kts	MDA(H) VIS
A	1700m	100	670' (437') 2100m
B		135	740' (507') 2100m
C	NOT APPLICABLE	C	NOT APPLICABLE
D		D	

EGYP/MPN MT PLEASANT

JEPPESEN MT PLEASANT, FALKLAND IS
1 OCT 21 **13-2** .Eff.7.Oct.

VOR DME Rwy 10

* ATIS 128.550	* MT PLEASANT Approach 118.5	ISLAND Radar Initial Contact Freq 131.5 132.5	* MT PLEASANT Tower 133.350	* Ground 130.3
For UHF see MIL-101 listing.				
VOR MTP *114.7	Final Apch Crs 101 [^]	D10.3 MPA TAC 3340' (3107')	MDA(H) 600' (367')	Apt Elev 233' Rwy 233'
MISSED APCH: Climb on R-101 MTP VOR to 3740' or D18.6 MPA TAC/R-101 MTP VOR, whichever is earlier, then turn LEFT to join holding at 3740'. Do not turn before MAP.				
Alt Set: hPa Rwy Elev: 9 hPa Trans level: By ATC Trans alt: 5000'				
1. DME mandatory. 2. CAUTION: High ground in close proximity to final approach track. 3. Final apch track offset 1 [^] from rwy centerline.				
				MSA MPA TAC



Gnd speed-Kts	70	90	100	120	140	160		Refer to Missed Apch above	
Descent angle	3.00 [^]	372	478	531	637	743			849
MAP at D1.5 MPA TAC									

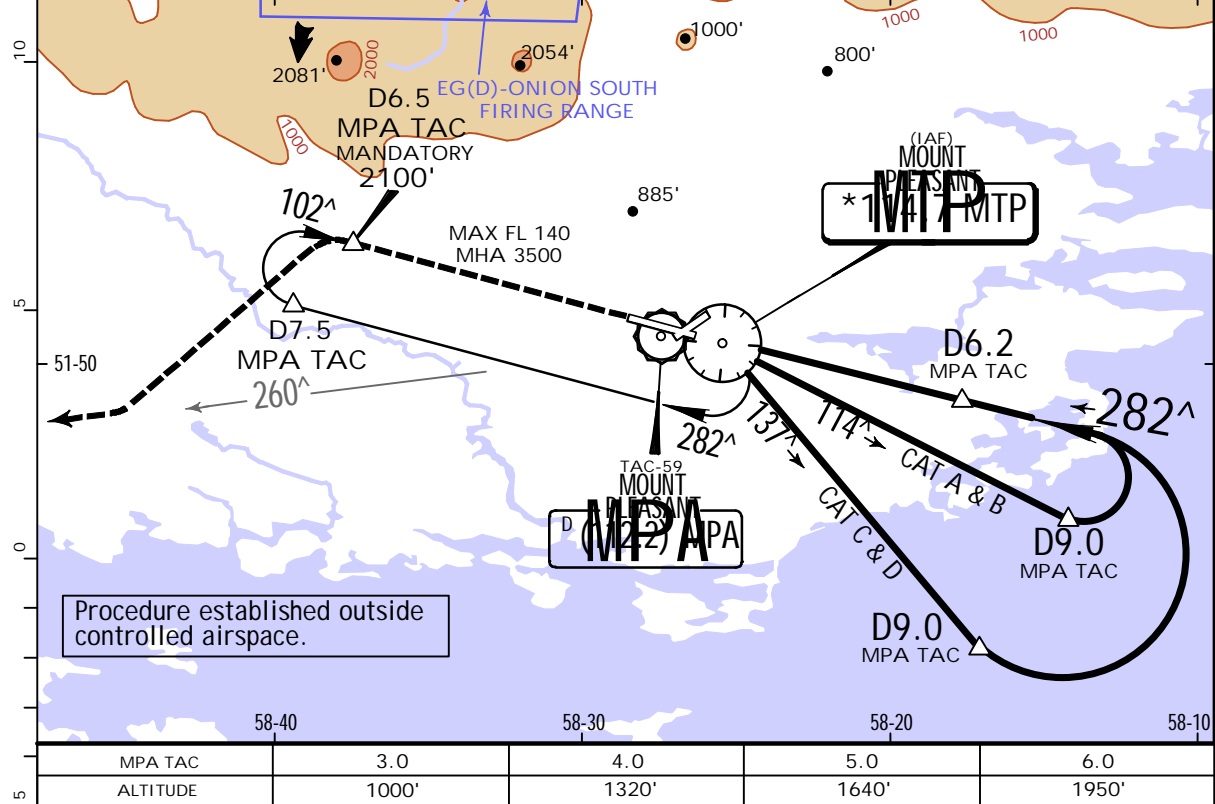
.Standard. STRAIGHT-IN LANDING RWY 10				CIRCLE-TO-LAND			
CDFA MDA(H) 600' (367')				Prohibited North of rwy 10/28 and West of rwy 05/23			
ALS out				Max Kts.	MDA(H)	VIS	
A				100	670' (437')	1700m	
B	1000m			135	840' (607')	1700m	
C				180	940' (707')	2400m	
D	1900m			205	950' (717')	3600m	
E				E	1540' (1307')	3600m	

EGYP/MPN MT PLEASANT

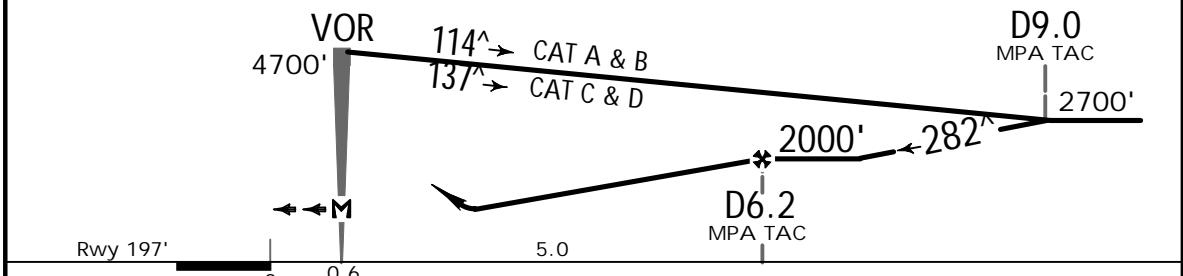
5 NOV 21 **13-3**

MT PLEASANT, FALKLAND IS VOR DME Rwy 28

* ATIS 128.550	* MT PLEASANT Approach 118.5	ISLAND Radar Initial Contact Freq 131.5 132.5	* MT PLEASANT Tower 133.350	* Ground 130.3
For UHF see MIL-101 listing.				
VOR MTP * 114.7	Final Apch Crs 282 [^]	D6.2 MPA TAC 2000' (1803')	MDA(H) 520' (323')	Apt Elev 233' Rwy 197'
MISSED APCH: Climb on R-282 MTP VOR to 2100 to D6.5 MPA TAC, then turn LEFT to intercept R-260 MTP VOR. Do not turn before MAP.				
Alt Set: hPa	Rwy Elev: 7 hPa	Trans level: By ATC	Trans alt: 5000'	
DME mandatory.				MSA MPA TAC



MPA TAC	3.0	4.0	5.0	6.0
ALTITUDE	1000'	1320'	1640'	1950'



Gnd speed-Kts	70	90	100	120	140	160
Descent Angle	3.00 [^]	372	478	531	637	849
MAP at VOR						

Standard. STRAIGHT-IN LANDING RWY 28		CIRCLE-TO-LAND	
CDFA MDA(H) 520' (323')		Prohibited North of rwy 10/28 and West of rwy 05/23	
ALS out		Max Kts	MDA(H) VIS
A		100	670' (437') 1500m
B		135	740' (507') 1600m
C	800m	180	840' (607') 2400m
D		205	940' (707') 3600m
E		205	1030' (797') 3600m

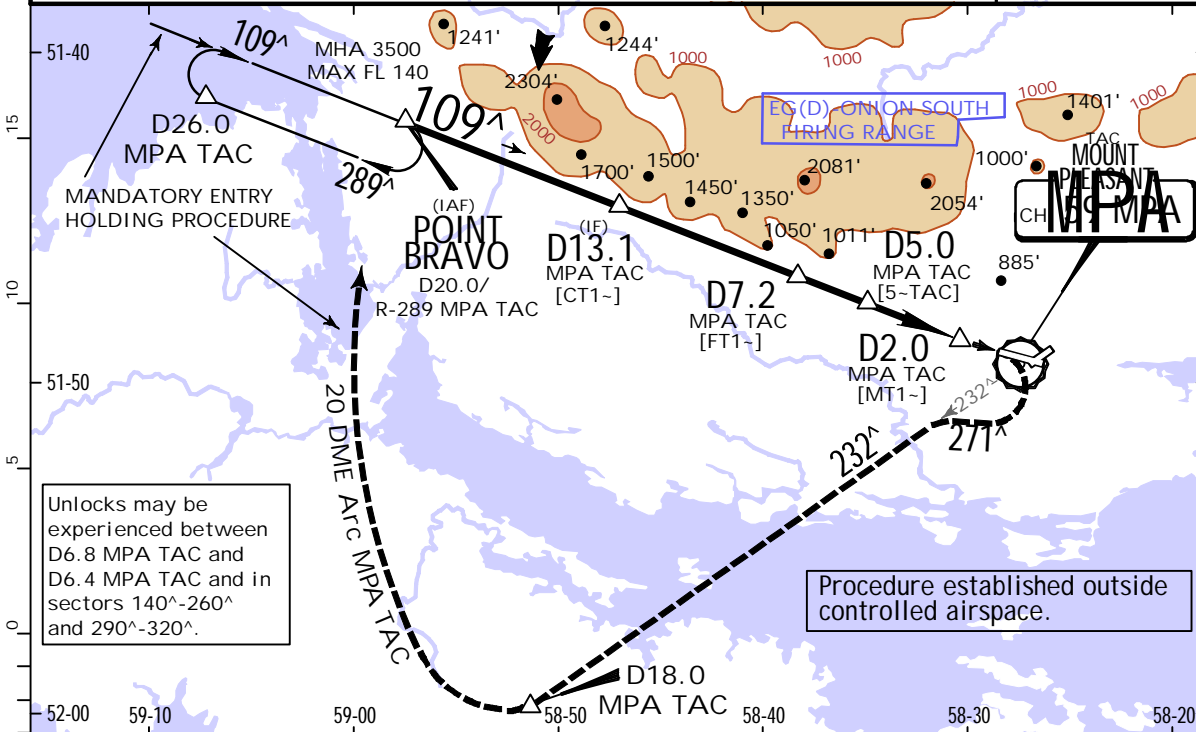
EGYP/MPN MT PLEASANT

JEPPESEN MT PLEASANT, FALKLAND IS
TACAN Rwy 10
1 OCT 21 (14-1) .Eff.7.Oct.

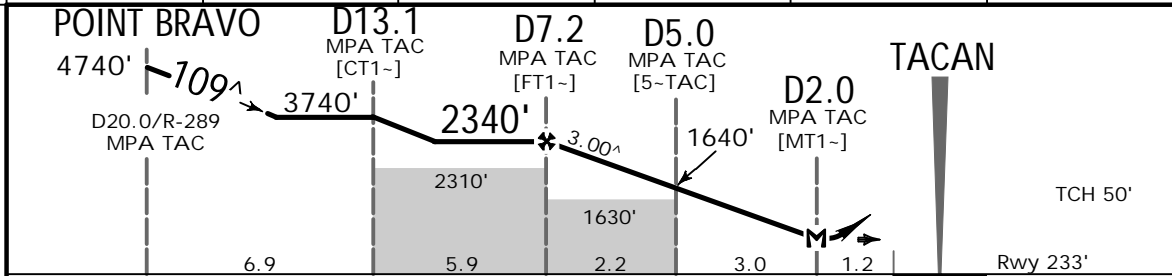
*ATIS 128.550	*MT PLEASANT Approach 118.5	ISLAND Radar Initial Contact Freq 131.5 132.5	*MT PLEASANT Tower 133.350	*Ground 130.3
------------------	--------------------------------	---	-------------------------------	------------------

BRIEFING STRIP

For UHF see MIL-101 listing.				
TACAN MPA CH 59	Final Apch Crs 109 [^]	D7.2 MPA TAC 2340' (2107')	MDA(H) Refer to Minimums	Apt Elev 233' Rwy 233'
MISSED APCH: Climb on rwy track to 940' , then turn RIGHT on 271 [^] to intercept R-232 MPA TAC, climbing to 3740' . At D18.0/R-232 MPA TAC turn RIGHT to intercept 20 DME Arc MPA TAC and join holding at 3740' . Do not turn before MAP.				
Alt Set: hPa Rwy Elev: 9 hPa Trans level: By ATC Trans alt: 5000'				
1. CAUTION: High ground in close proximity to final approach track. 2. Final apch track offset 7 [^] from runway centerline.				



MPA TAC	7.0	6.0	5.0	4.0	3.0
ALTITUDE	2270'	1960'	1640'	1320'	1000'



Gnd speed-Kts	70	90	100	120	140	160	HIALS PAPI PAPI	940' on Lt Rwy track 3740' on Rt
Descent Angle	3.00 [^]	372	478	531	637	849		

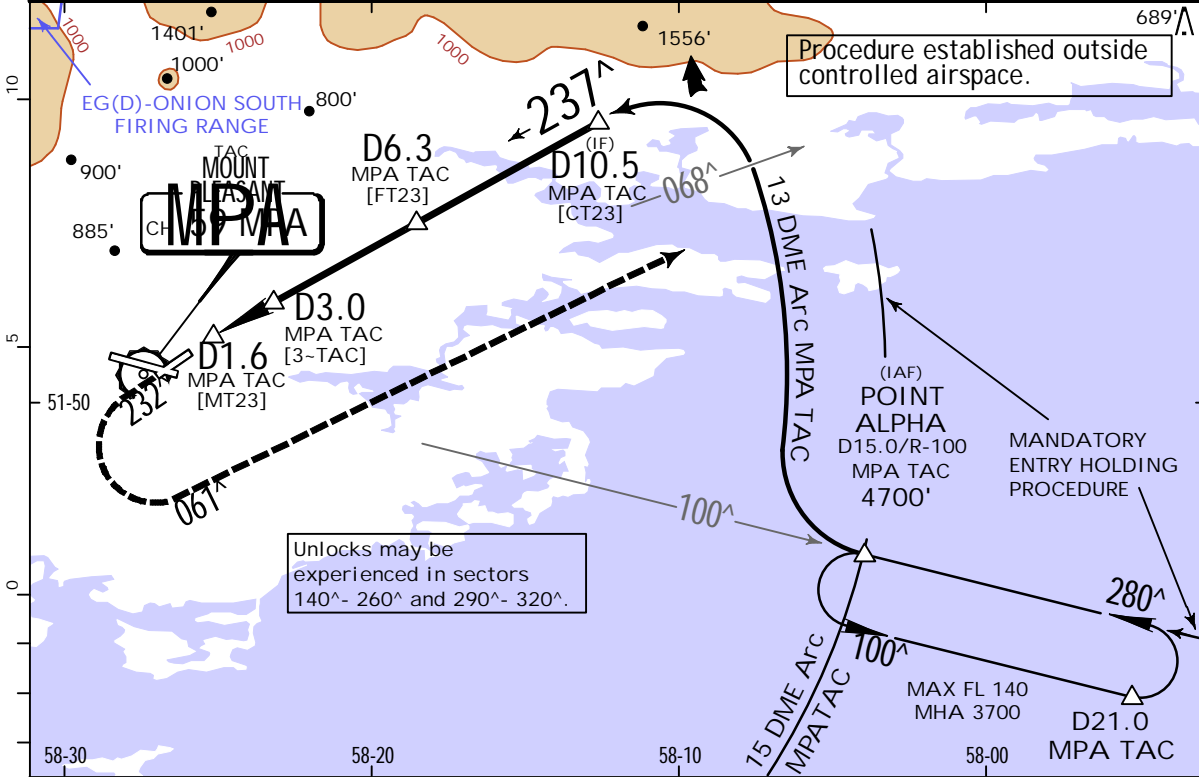
.Standard. STRAIGHT-IN LANDING RWY 10			CIRCLE-TO-LAND		
CDFA A: 610' (377') C: 650' (417') MDA(H) B: 620' (387') D: 670' (437') E: 720' (487')			Prohibited North of rwy 10/28 and West of rwy 05/23		
ALS out			Max Kts	MDA(H)	VIS
A	1500m	1800m	100	670' (437')	1700m
B		1900m	135	850' (617')	1800m
C		3300m	180	950' (717')	2800m
D	2800m	3400m	205	1000' (767')	3600m
E		3600m	E	1970' (1737')	3600m

EGYP/MPN MT PLEASANT

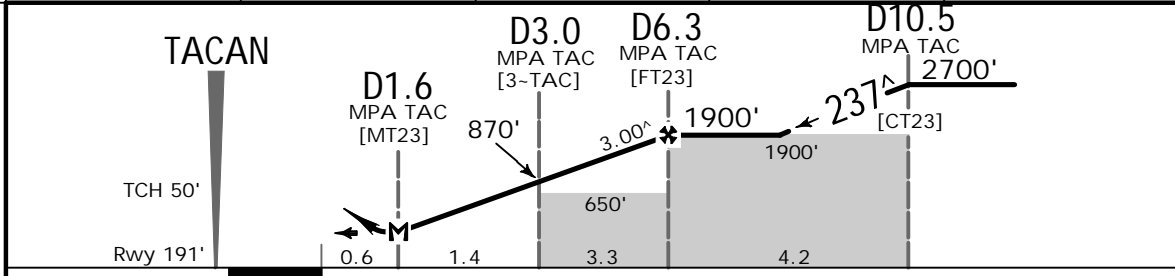
JEPPESEN MT PLEASANT, FALKLAND IS
1 OCT 21 **14-2** .Eff.7.Oct.

TACAN Rwy 23

*ATIS 128.550	*MT PLEASANT Approach 118.5	ISLAND Radar Initial Contact Freq 131.5 132.5	*MT PLEASANT Tower 133.350	*Ground 130.3
For UHF see MIL-101 listing.				
TACAN MPA CH 59	Final Apch Crs 237[^]	D6.3 MPA TAC 1900' (1709')	MDA(H) Refer to Minimums	Apt Elev 233' Rwy 191'
MISSED APCH: Climb on track 232 [^] to 800', then turn LEFT on 061 [^] climbing to 3700' to intercept 13 DME Arc MPA TAC to commence another approach. Do not turn before MAP.				
Alt Set: hPa	Rwy Elev: 7 hPa	Trans level: By ATC	Trans alt: 5000'	
Final apch track offset 5 [^] from runway centerline.				



MPA TAC	3.0	4.0	5.0	6.0
ALTITUDE	870'	1190'	1510'	1820'



Gnd speed-Kts	70	90	100	120	140	160		800'	232 [^]	3700'	061 [^]
Descent angle	3.00 [^]	372	478	531	637	849		LT	LT		
MAP at D1.6 MPA TAC											

.Standard. STRAIGHT-IN LANDING RWY 23				CIRCLE-TO-LAND		
CDFA				Prohibited North of rwy 10/28 and West of rwy 05/23		
A: 540' (349')	C: 610' (419')					
MDA(H) B: 580' (389')	D: 630' (439')		E: 680' (489')			
			ALS out	Max Kts.	MDA(H)	VIS
A	1200m		1600m	100	670' (437')	1500m
B	1400m		1800m	135	740' (507')	1700m
C	1500m		1900m	180	840' (607')	2400m
D	1600m		2000m	205	940' (707')	3600m
E	1800m		2200m	E	1240' (1049')	3600m

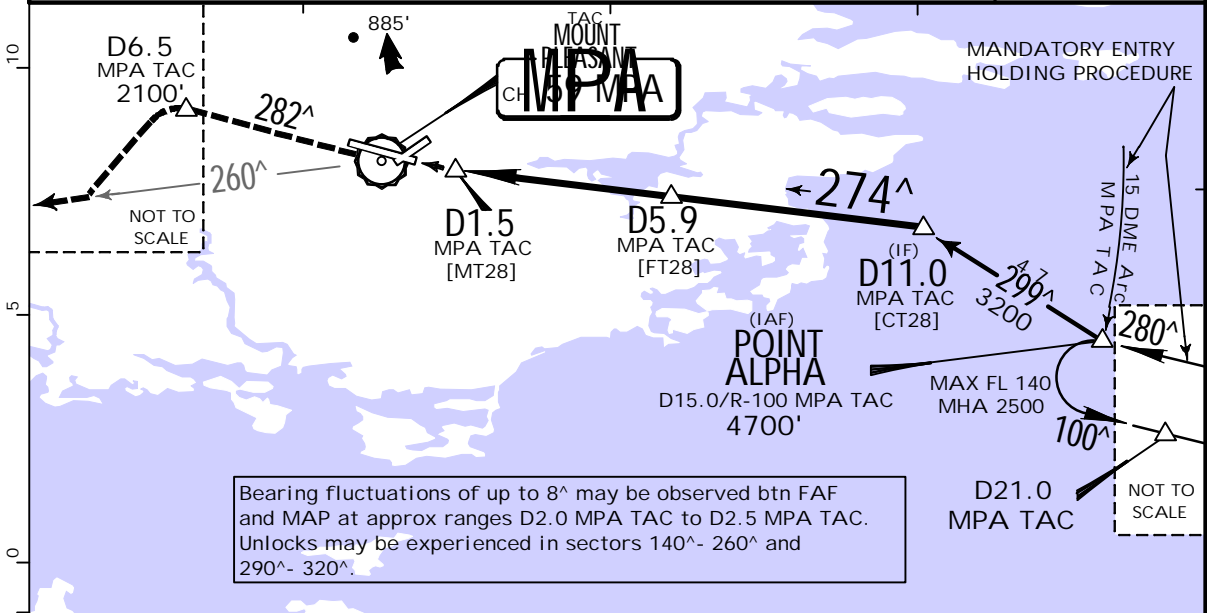
EGYP/MPN

MT PLEASANT

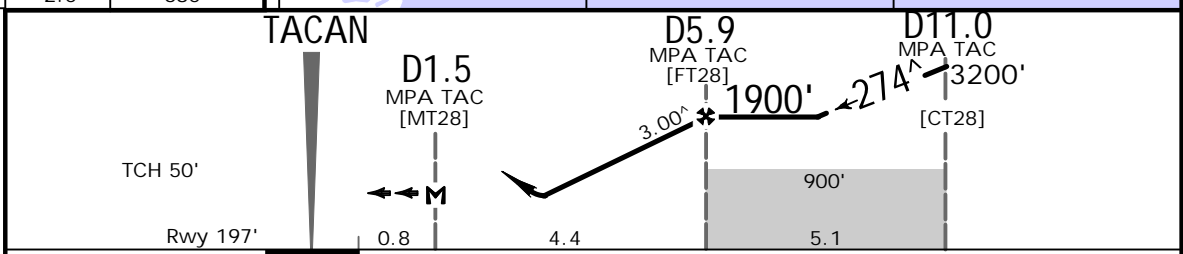
1 OCT 21 **14-3** .Eff.7.Oct.

TACAN Rwy 28

*ATIS 128.550	*MT PLEASANT Approach 118.5	ISLAND Radar Initial Contact Freq 131.5 132.5	*MT PLEASANT Tower 133.350	*Ground 130.3
For UHF see MIL-101 listing.				
TACAN MPA CH 59	Final Apch Crs 274 [^]	D5.9 MPA TAC 1900' (1703')	MDA(H) Refer to Minimums	Apt Elev 233' Rwy 197'
MISSED APCH: Climb on R-282 MPA TAC to 2100' to D6.5 MPA TAC, then turn LEFT to intercept R-260 MPA TAC.				
Do not turn before MAP.				
Alt Set: hPa Rwy Elev: 7 hPa Trans level: By ATC Trans alt: 5000'				
Final apch track offset 8 [^] from runway centerline.				MSA MPA TAC



RECOMMENDED ALTITUDES	
MPA TAC	ALTITUDE
5.0	1630'
4.0	1320'
3.0	1000'
2.0	680'



Gnd speed-Kts	70	90	100	120	140	160		D6.5 MPA TAC on CH 59 R-282	
Descent angle	3.00 [^]	372	478	531	637	743			849
MAP at D1.5 MPA TAC									

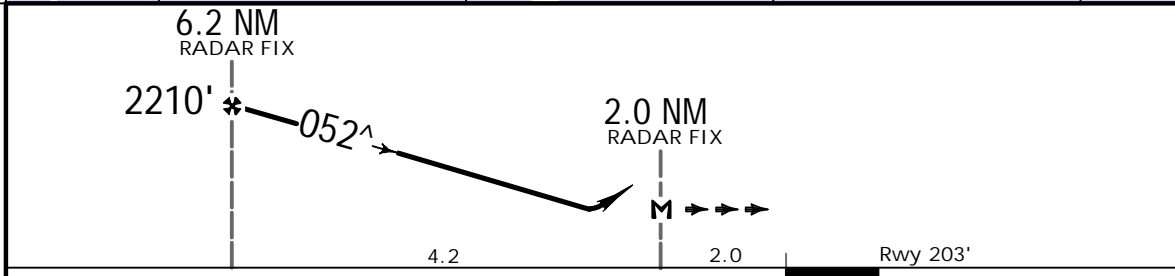
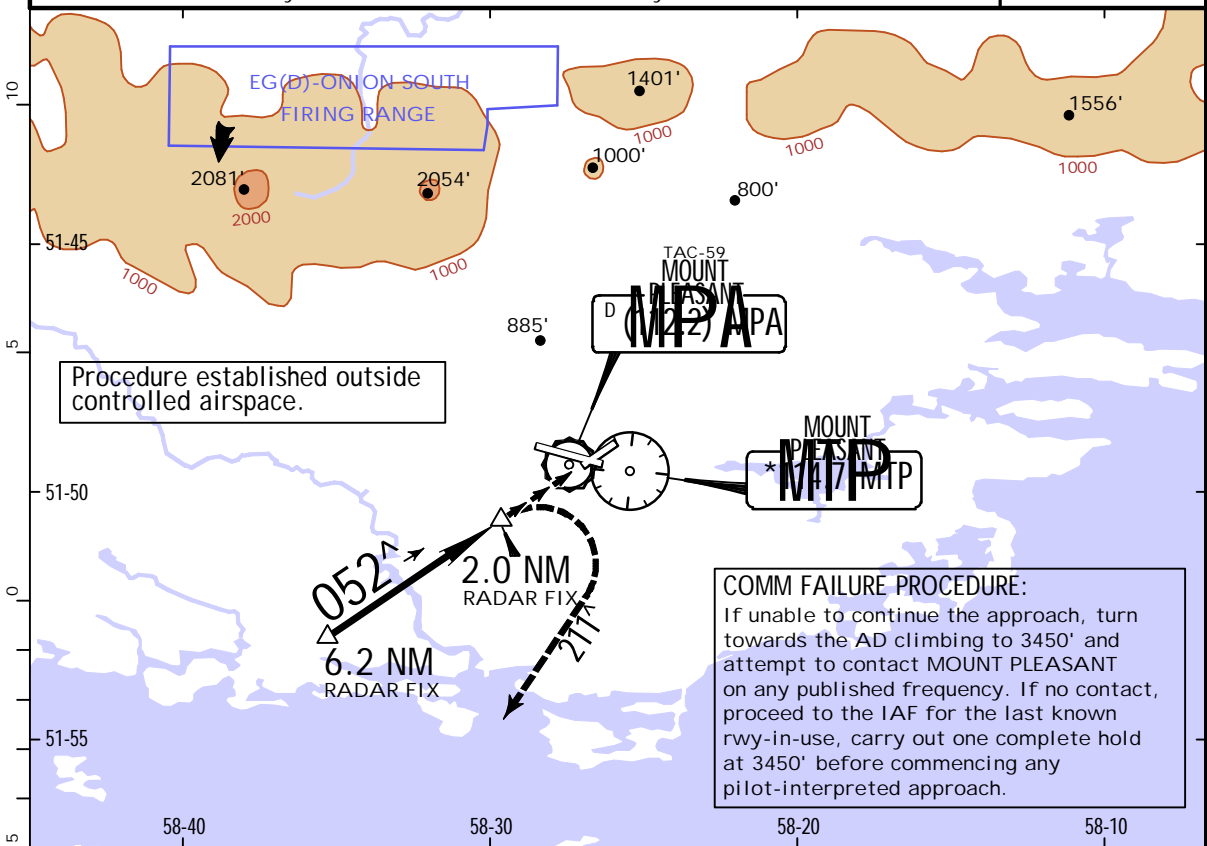
Standard STRAIGHT-IN LANDING RWY 28				CIRCLE-TO-LAND	
CDFA A: 540' (343') C: 610' (413') MDA(H) B: 580' (383') D: 630' (433') E: 680' (483')				Prohibited North of rwy 10/28 and West of rwy 05/23	
		ALS out	Max Kts.	MDA(H)	VIS
A	900m	1600m	100	670' (437')	1 1500m
B	1100m	1800m	135	740' (507')	1 1700m
C	1200m	1900m	180	840' (607')	2400m
D	1300m	2000m	205	940' (707')	3600m
E	1500m	2200m	E	1030' (797')	3600m
1 or higher straight-in minimums.					

EGYP/MPN MT PLEASANT

JEPPesen 1 OCT 21 **(18-1)** .Eff.7.Oct.

MT PLEASANT, FALKLAND IS
***SRA Rwy 05**

*ATIS 128.550	*MT PLEASANT Approach 118.5	ISLAND Radar Initial Contact Freq 131.5 132.5	*MT PLEASANT Tower 133.350	*Ground 130.3
For UHF see MIL-101 listing				
RADAR	Final Apch Crs 052[^]	6.2 NM RADAR FIX 2210' (2007')	MDA(H) 890' (687')	Apt Elev 233' Rwy 203'
MISSED APCH: Turn RIGHT onto 211 [^] and climb to 3410. Contact Mt Pleasant Approach. Missed Apch assessed to 15 NM from Watchman Radar. Do not turn before MAP.				
Alt Set: hPa	Rwy Elev: 7 hPa	Trans level: By ATC	Trans alt: 5000'	MSA MPA TAC



Gnd speed-Kts	70	90	100	120	140	160	HIALS PAPI PAPI
Descent angle	3.00 [^]	372	478	531	637	849	

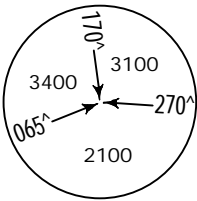
.Standard.		STRAIGHT-IN LANDING RWY 05		CIRCLE-TO-LAND	
		CDFA MDA(H) 890' (687')		Prohibited North of rwy 10/28 and West of rwy 05/23	
		ALS out		Max Kts	MDA(H) VIS
A	1500m			100	670' (437') 3200m
B				135	740' (507') 3200m
C		3200m		180	840' (607') 3200m
D	2400m			205	940' (707') 3600m
E				E	1030' (797') 3600m

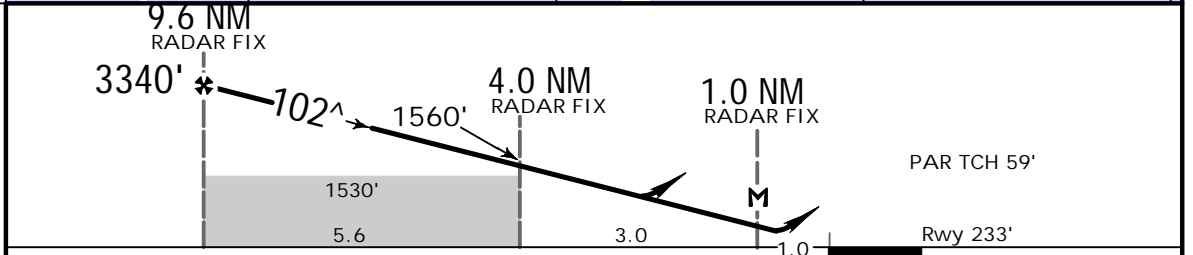
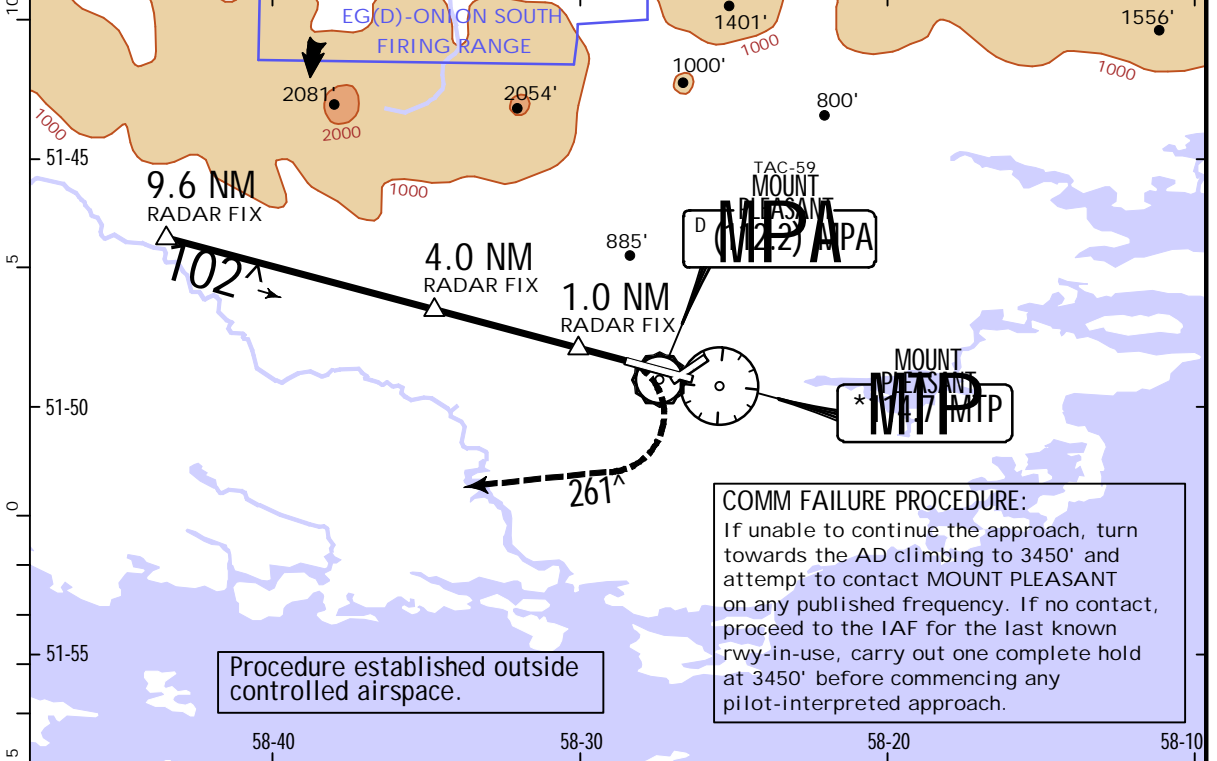
MIPS


EGYP/MPN
MT PLEASANT

JEPPESSEN MT PLEASANT, FALKLAND IS
1 OCT 21 **18-2** .Eff.7.Oct.

*PAR or *SRA Rwy 10

*ATIS 128.550	*MT PLEASANT Approach 118.5	ISLAND Radar Initial Contact Freq 131.5 132.5	*MT PLEASANT Tower 133.350	*Ground 130.3
For UHF see MIL-101 listing				
RADAR	Final Apch Crs 102[^]	9.6 NM RADAR FIX 3340' (3107')	PAR DA(H) Refer to Minimums SRA MDA(H) 810' (577')	Apt Elev 233' Rwy 233'
MISSED APCH: Climb on Rwy track to 840' , (SRA: 860') , then turn RIGHT on track 261 [^] climbing to 3440'. Contact Mt Pleasant APCH. PAR: Missed Apch assessed to 25 NM from ARP. SRA: Missed Apch assessed to 15 NM from Radar. Do not turn before THR (SRA: MAP).				
Alt Set: hPa Rwy Elev: 9 hPa Trans level: By ATC Trans alt: 5000'				MSA MPA TAC



Gnd speed-Kts	70	90	100	120	140	160	HIALS  PAPI Refer to Missed Apch above	
PAR GS or SRA Descent angle	3.00 [^]	372	478	531	637	743		849
MAP at 1.0 NM RADAR FIX								

.Standard. AB: 433' (200') D: 453' (220') DA(H) C: 443' (210') E: 473' (240')		STRAIGHT-IN LANDING RWY 10 PAR SRA MDA(H) 810' (577')		CIRCLE-TO-LAND Prohibited North of rwy 10/28 and West of rwy 05/23	
ALS out		ALS out		Max Kts	MDA(H) VIS
A		1500m		100	670' (437') 1 1500m
B				135	2 740' (507') 1600m
C	800m	1200m		180	3 840' (607') 2400m
D			2600m	205	4 940' (707') 3600m
E				E	5 1030' (797') 3600m

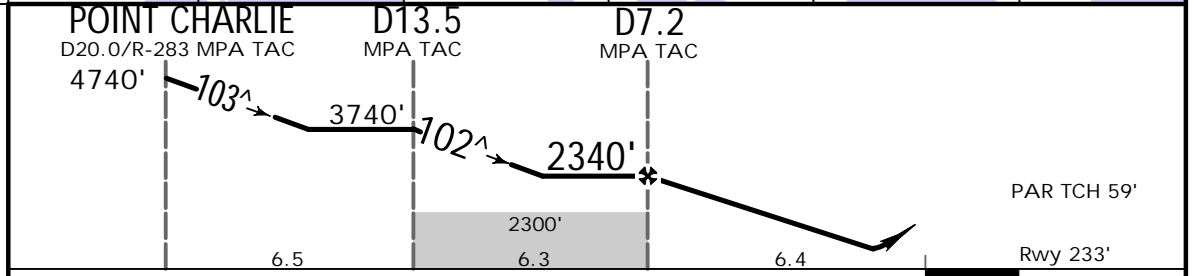
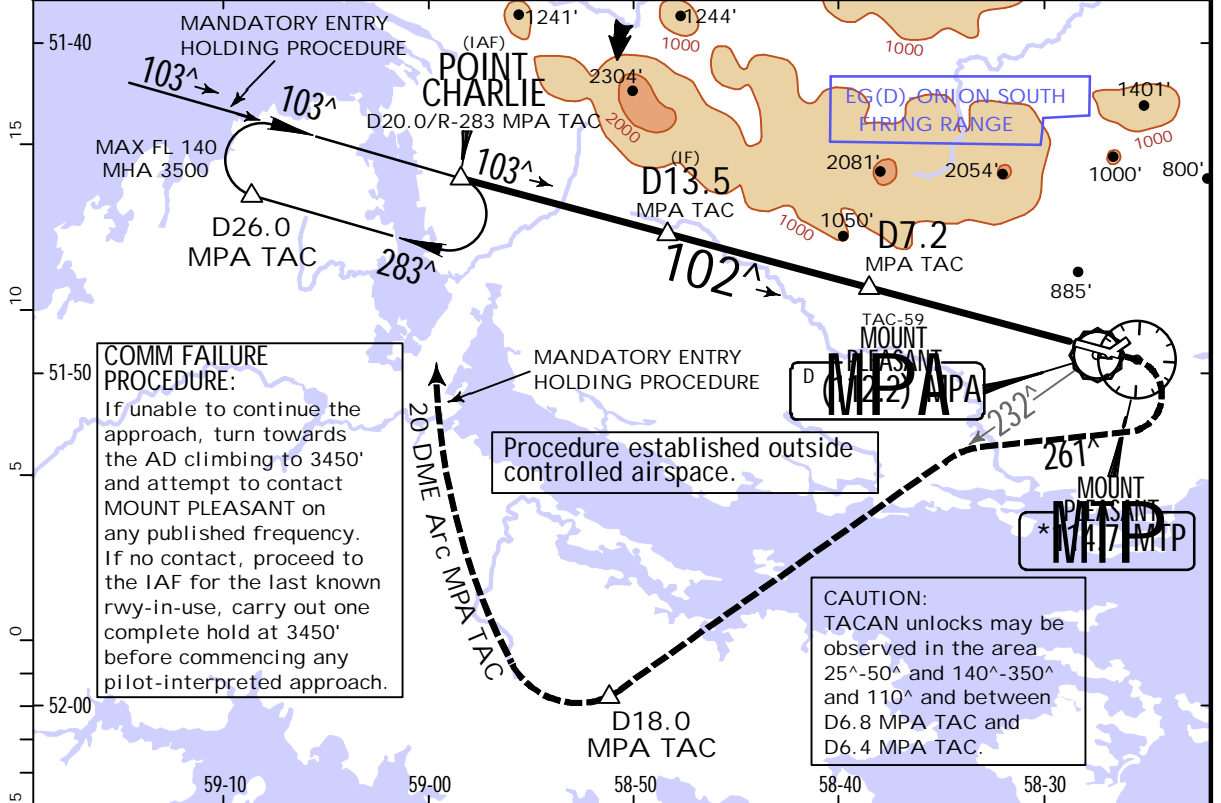
1 After SRA: VIS 2600m. 2 After SRA: MDA(H) 780'(547'), VIS 2600m. 3 After SRA: MDA(H) 880'(647'), VIS 2600m. 4 After SRA: MDA(H) 950'(717'). 5 After SRA: MDA(H) 1510'(1277').

EGYP/MPN
MT PLEASANT

JEPPESSEN
20 JAN 23
Eff. 26 Jan. 18-3 TACAN Azimuth Required

MT PLEASANT, FALKLAND IS
TACAN *PAR Rwy 10

* ATIS 128.550	* MT PLEASANT Approach 118.5	ISLAND Radar Initial Contact Freq 131.5 132.5	* MT PLEASANT Tower 133.350	* Ground 130.3
For UHF see MIL-101 listing				
RADAR	Final Apch Crs 102 [^]	D7.2 MPA TAC 2340' (2107')	DA(H) Refer to Minimums	Apt Elev 233' Rwy 233'
MISSED APCH: Climb on Rwy track to 840' , then turn RIGHT on track 261 [^] to intercept R-232 MPA TAC climbing to 3740' . At D18.0/R-232 MPA TAC turn RIGHT to intercept 20 DME Arc MPA TAC and join holding at 3740' . Do not turn before MAP.				
Alt Set: hPa	Rwy Elev: 9 hPa	Trans level: By ATC	Trans alt: 5000'	
CAUTION: High ground in close proximity to final approach track.				MSA MPA TAC



Gnd speed-Kts	70	90	100	120	140	160		840'	Rwy track	3740'	261 [^]
PAR GS	3.00 [^]	372	478	531	637	849		↑	on	RT	on

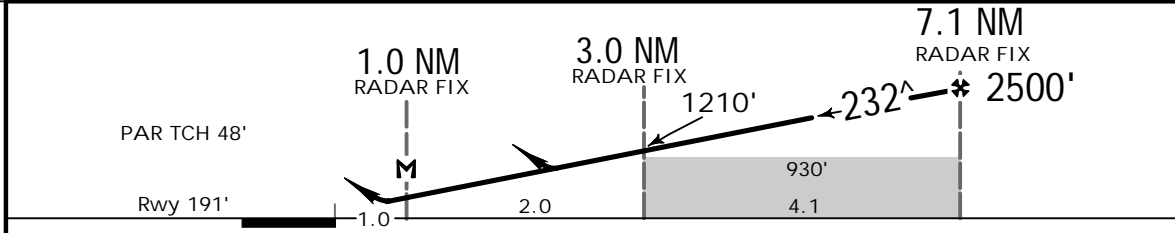
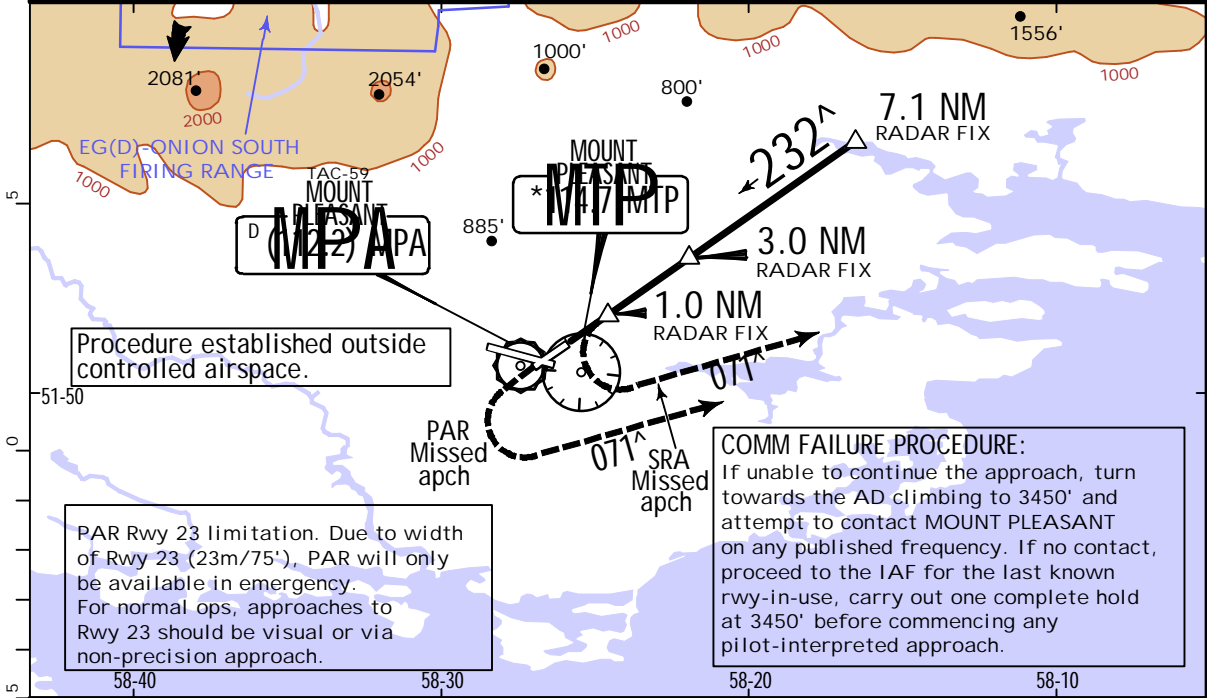
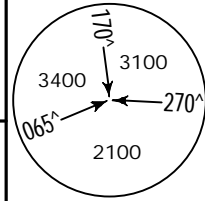
Standard. STRAIGHT-IN LANDING RWY 10				CIRCLE-TO-LAND			
DA(H) AB: 433' (200') D: 453' (220') C: 443' (210') E: 473' (240')				Prohibited North of rwy 10/28 and West of rwy 05/23			
ALS out				Max Kts	MDA(H)	VIS	
A				100	670' (437')	1500m	
B				135	740' (507')	1600m	
C	800m	1200m		180	840' (607')	2400m	
D				205	940' (707')	3600m	
E				E	1030' (797')	3600m	

EGYP/MPN MT PLEASANT

JEPPESSEN MT PLEASANT, FALKLAND IS
20 JAN 23 (18-4) .Eff.26.Jan.

*PAR or *SRA Rwy 23

*ATIS 128.550	*MT PLEASANT Approach 118.5	ISLAND Radar Initial Contact Freq 131.5 132.5	*MT PLEASANT Tower 133.350	*Ground 130.3
For UHF see MIL-101 listing				
RADAR	Final Apch Crs 232[^]	7.1 NM RADAR FIX 2500' (2309')	PAR DA(H) Refer to Minimums	Apt Elev 233' Rwy 191'
			SRA MDA(H) 880' (689')	
<p>PAR MISSED APCH: Climb on Rwy track to 800', then turn LEFT on track 071[^] climbing to 3400'. Contact Mt Pleasant Approach. Missed Apch assessed to 25 NM from ARP. Do not turn before THR.</p> <p>SRA MISSED APCH: Turn LEFT onto 071[^] and climb to 3400. Contact Mt Pleasant Approach. Missed Apch assessed to 15 NM from Watchman Radar. Do not turn before MAP.</p>				
<p>Alt Set: hPa Rwy Elev: 7 hPa Trans level: By ATC Trans alt: 5000'</p>				



Gnd speed-Kts	70	90	100	120	140	160	HIALS REIL PAPI PAPI Refer to Missed Apch above	
PAR GS or SRA Descnt angle	3.00 [^]	372	478	531	637	743		849
MAP at 1.0 NM RADAR FIX								

.Standard.				STRAIGHT-IN LANDING RWY 23				CIRCLE-TO-LAND			
PAR		SRA		Prohibited North of rwy 10/28 and West of rwy 05/23				Max Kts		MDA(H) VIS	
DA(H)		CDFA						100		135	
A: 401' (210')		880' (689')		1500m		670' (437')		1		1500m	
B: 411' (220')		ALS out		1200m		740' (507')		1		1600m	
C: 421' (230')		ALS out		800m		840' (607')		1		2400m	
				2400m		940' (707')				3600m	
				1300m		21030' (797')		E		3600m	

1 After SRA: VIS 3200m. 2 After SRA: MDA(H) 1180' (947')

CHANGES: New note. | JEPPESSEN, 2013, 2023. ALL RIGHTS RESERVED.

EGYP/MPN MT PLEASANT

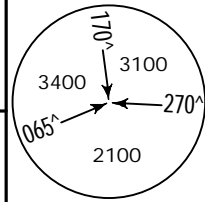
JEPPesen
5 NOV 21 **(18-5)**

MT PLEASANT, FALKLAND IS *PAR or *SRA Rwy 28

*ATIS 128.550	*MT PLEASANT Approach 118.5	ISLAND Radar Initial Contact Freq 131.5 132.5	*MT PLEASANT Tower 133.350	*Ground 130.3
------------------	--------------------------------	---	-------------------------------	------------------

For UHF see MIL-101 listing

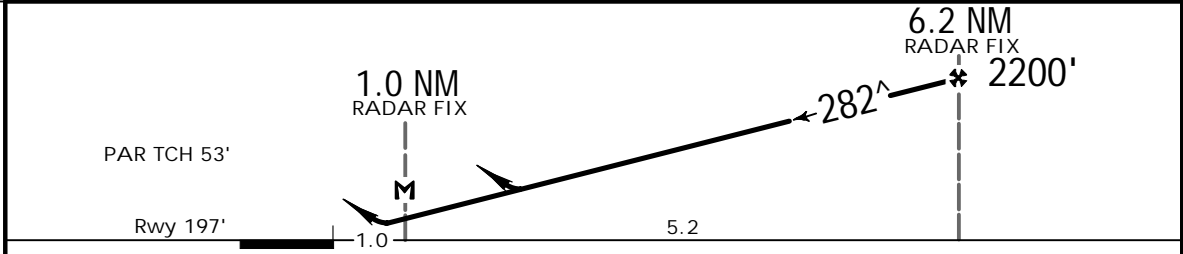
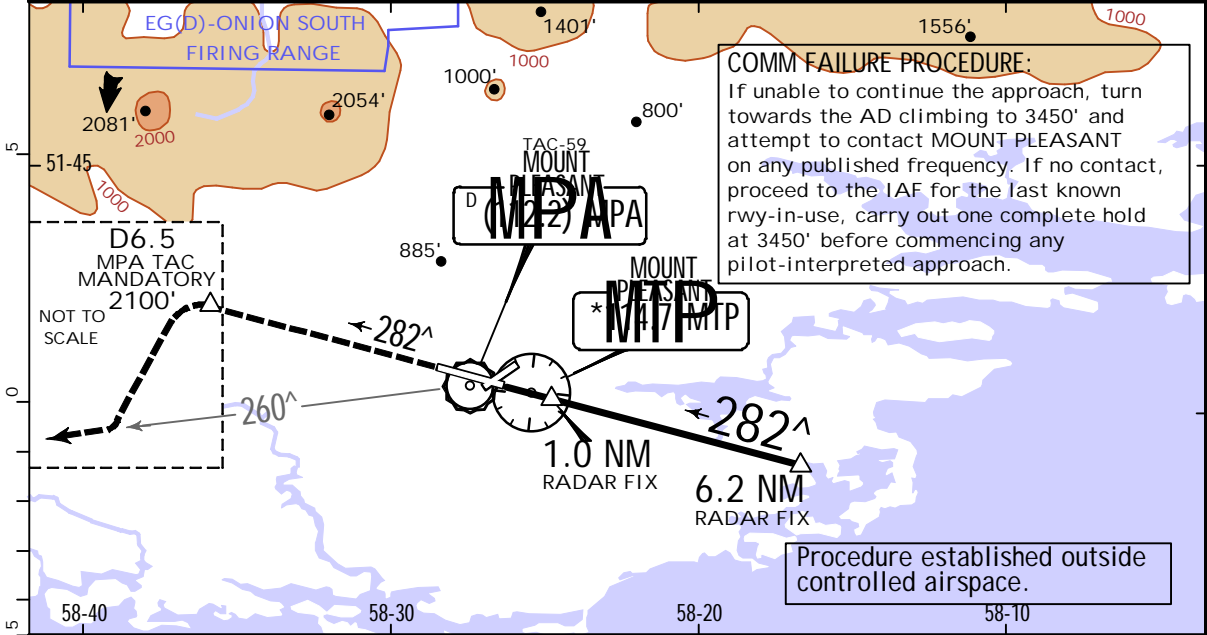
RADAR	Final Apch Crs 282[^]	6.2 NM RADAR FIX 2200' (2003')	PAR DA(H) Refer to Minimums	Apt Elev 233' Rwy 197'
			SRA MDA(H) Refer to Minimums	



MISSED APCH: Climb on Rwy track 282[^] to 2100' to D6.5 MPA TAC,
then turn LEFT to intercept R-260 MPA TAC or R-260 MTP VOR.

SRA: Do not turn before MAP.

Alt Set: hPa Rwy Elev: 7 hPa Trans level: By ATC Trans alt: 5000'



Gnd speed-Kts	70	90	100	120	140	160		
PAR GS or SRA Descent angle	3.00 [^]	372	478	531	637	743		849
MAP at 1.0 NM RADAR FIX								

Standard.	PAR	STRAIGHT-IN LANDING RWY 28			1 CIRCLE-TO-LAND
		SRA			
	DA(H)	MACG mim 5.0%		MACG mim 2.5%	Prohibited North of rwy 10/28 and West of rwy 05/23
	AB: 407', (210')	D: 427', (230')	CDEFA: 770', (573')	MDA(H) 1450', (1253')	
	C: 417', (220')	E: 447', (250')			
		ALS out	ALS out	ALS out	Max Kts
A			1500m		100
B		1200m			135
C	800m		2600m	5000m	180
D		1900m			205
E		1300m			205
					E

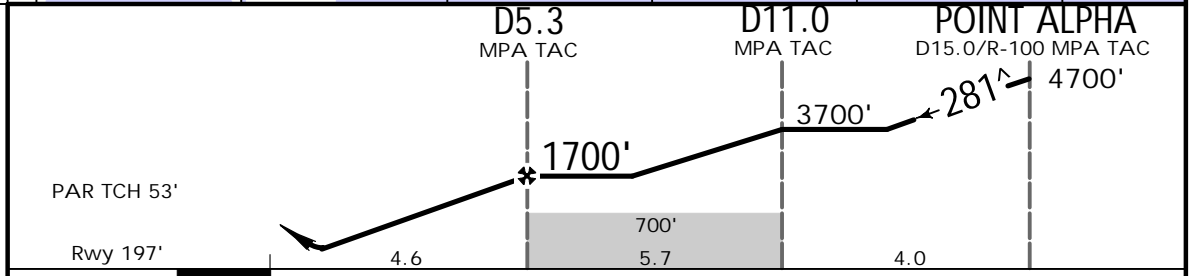
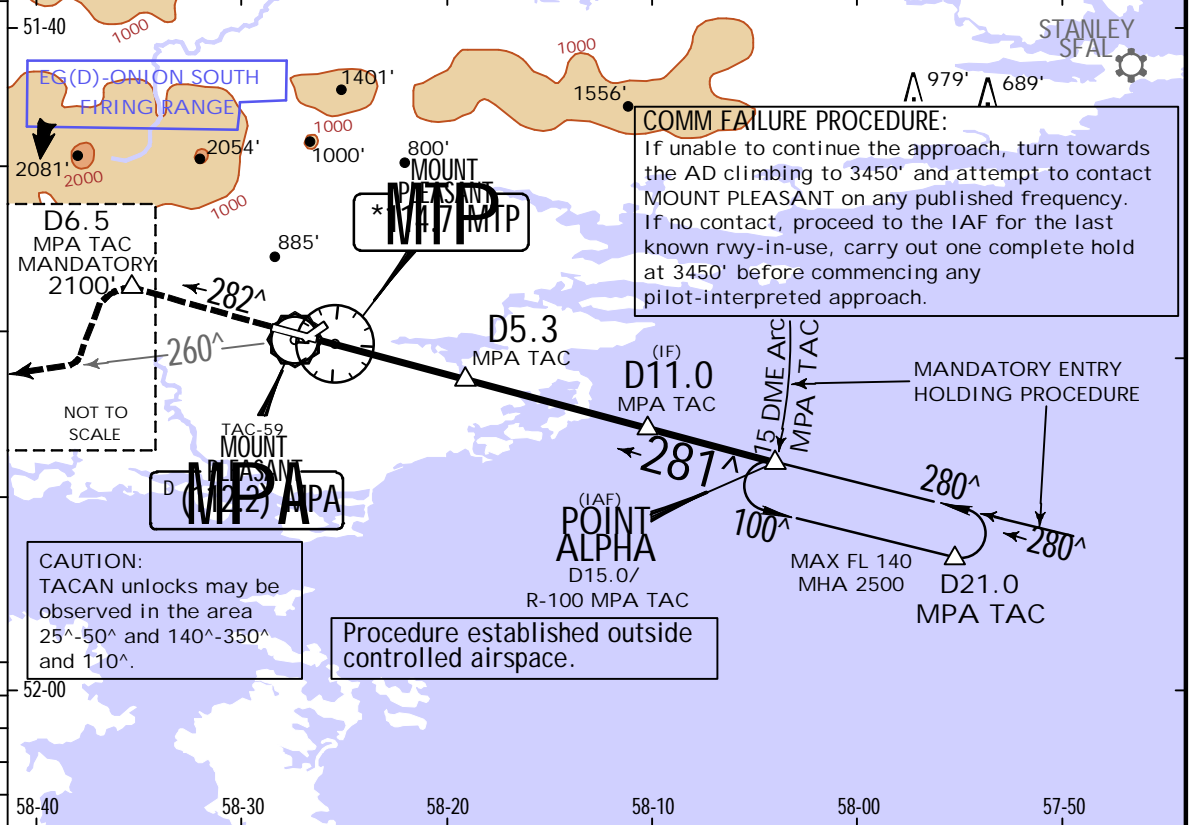
1 With MACG 2.5%: VIS 5000m. 2 or higher straight-in minimums. 3 After SRA: VIS 2600m.
4 After SRA: MDA(H) 1140' (907'), VIS 2600m. 5 After SRA: MDA(H) 1240' (1007'), VIS 2600m.
6 After SRA: MDA(H) 1240' (1007'). 7 After SRA: MDA(H) 1340' (1107').

EGYP/MPN MT PLEASANT

5 NOV 21 **18-6** TACAN Azimuth Required

MT PLEASANT, FALKLAND IS TACAN *PAR Rwy 28

*ATIS 128.550	*MT PLEASANT Approach 118.5	ISLAND Radar Initial Contact Freq 131.5 132.5	*MT PLEASANT Tower 133.350	*Ground 130.3
For UHF see MIL-101 listing				
RADAR	Final Apch Crs 281[^]	D5.3 MPA TAC 1700' (1503')	DA(H) Refer to Minimums	Apt Elev 233' Rwy 197'
MISSED APCH: Climb on Rwy track 282 [^] to 2100' to D6.5 MPA TAC, then turn LEFT to intercept R-260 MPA TAC or R-260 MTP VOR. Do not turn before THR.				
Alt Set: hPa	Rwy Elev: 7 hPa	Trans level: By ATC	Trans alt: 5000'	MSA MPA TAC



Gnd speed-Kts	70	90	100	120	140	160	HIALS REIL PAPI PAPI MPA TAC on Rwy track
PAR GS	3.00 [^]	372	478	531	637	849	

Standard STRAIGHT-IN LANDING RWY 28 DA(H) AB: 407' (210') D: 427' (230') C: 417' (220') E: 447' (250')		CIRCLE-TO-LAND Prohibited North of rwy 10/28 and West of rwy 05/23			
MIPS	ALS out		Max Kts	MDA(H)	vis
	A	800m	100	670' (437')	1500m
			135	740' (507')	1600m
			180	840' (607')	2400m
			205	940' (707')	3600m
E	1300m	E	1030' (797')	3600m	

Chart changes since cycle 06-2023

ADD = added chart, REV = revised chart, DEL = deleted chart.

ACT PROCEDURE IDENT

INDEX

REV DATE

EFF DATE

MOUNT PLEASANT, (MOUNT PLEASANT - EGYPT)

TERMINAL CHART CHANGE NOTICES

No Chart Change Notices for Airport EGYF